

MAJOR ONSITE & WEBCAST AUCTION COMPLETE CLOSURE OF AVOT LLC

FEATURING: (18) CNC MACHINING CENTERS & TURNING CENTERS BY DAEWOO, DECKEL, MAZAK, MATSUURA, HITACHI-SEIKI, MORI-SEIKI AND CINCINNATI MILACRON



Doosan Daewoo Puma 2000SY Turning Center



Deckel Maho DMU50V Vertical Machining Center

Hitachi Seiki High Tech-Turn 25S Turning Center



Mazak MTV-655/60 Vertical Machining Center



Mazak H-500/40N Horizontal Machining Center



Di-Acro #14-48-2 Hydra Power Press Brake

**SALE SITE: 191 COOLIDGE AVE. ENGLEWOOD, NJ - USA
SALE DATE: TUESDAY, MAY 19, 10:30 AM (EDT)**

Sale under Management of:

Thomas Industries, Inc.

2414 Boston Post Road, Guilford, CT 06437-2310

Phone (203) 458-0709 • Fax (203) 458-0727

email: gavel@thomasauction.com • www.thomasauction.com



(18) CNC MACHINING CENTERS & TURNING CENTERS



Doosan Daewoo Puma 2000SY Turning Center



Cincinnati Milacron Hawk 150-A2100 Turning Center



Hitachi Seiki 4NE-600 Turning Center



Kia "KiaMaster" 4NE II-600 Turning Center



Mori Seiki TL-5 B-1000 Turning Center

TURNING CENTERS

2006 **Doosan Daewoo** CNC Turning Center Model Puma 2000SY, S/N P200SY0633, 23.6" Swing Over Bed, 21.6" Swing Over Carriage, 2.625 Bar Capacity, 13" Turning Diameter, 20.1" Turning Length, 2.99" Spindle Bore, 45-5,000 RPM Spindle Speeds, 9.8" X-Axis, 22.8" Z-Axis, Kitagawa 10" 3-Jaw Chuck, Model B-210, 12 Position Turret, Programmable Tailstock, Part Catcher, Fanuc Series 18i-TB CNC Control, Jorgensen Chip Conveyor, W/ SMW Programmable Bar Feed, Model Spacesaver 2200, S/N 18-725/08/2006

Cincinnati Milacron CNC Turning Center, (1998) Model Hawk 150-A2100, S/N 7051A00980241, 15.7" Swing Over Bed, 15.7" Turning Length, 8" Turning Diameter, 2" Spindle Bore, 8.5" X-Axis, 17.3" Z-Axis, 6 1/2" 3-Jaw Chuck, 12-Position Turret, Jorgensen Chip Conveyor, Cincinnati Milacron Model Acramatic 2100

Hitachi Seiki Type CNC Turning Center (1994), Model High Tech-Turn 25S, S/N 25416-SC, 20" Diameter Swing, 23.6" Center Distance, 2.5" Bar Capacity, 20-3600 RPM, Kitagawa 10" 3-Jaw Chuck, Model Bravo-10, 10-Position Turret, Tailstock, Hitachi Seiki Model Seiki Multi CNC Control, Turbo Chip Conveyor



Hitachi Seiki HC400 Horizontal Machining Center



Deckel Maho DMU50V Vertical Machining Center

Hitachi Seiki CNC Turning Center Model 4NE-600, S/N NE41287, 22.8" Swing, 24.4" Turning Length, 2.75" Spindle Bore, 12-Position Turret, 8.875" X-Axis, 24.5" Z-Axis, New London Chip Conveyor, Fanuc System 6T CNC Controls

1986 **Kia** "KiaMaster" CNC Turning Center, Model 4NE II-600 S/N NE6492, 22.75" Swing, 24" Center Distance, 2.37" Bar Capacity, 12-Position Bi-Directional Turret, Tailstock, Kitagawa 10" 3-Jaw Chuck, Model B-10, Fanuc System 3T CNC Control, Turbo Chip Conveyor

Mori Seiki CNC Turning Center Model TL-5 B-1000, S/N 964, Kitagawa 12" 3-Jaw Chuck, 8-Position Turret, Tailstock, 24.4" Swing Over Bed, 14.9" Swing Over Cross Slide, 42" Center Distance, Fanuc System 6T CNC Control, Chip Conveyor

HORIZONTAL MACHINING CENTERS

1994 **Mazak** CNC Horizontal Machining Center Model H-500/40N, S/N 112889, Pallet Changer Type, (2) 19.75" x 19.75" Pallets, 360,000 Pallet Indexing, 27.9" X-Axis, 25.5" Y-Axis, 25.5" Z-Axis, 15,000 Spindle RPM's, 30 Position ATC, Dual Auger Type Chip Conveyor, Mazak Mazatrol M-32 CNC Control, Tsubakimoto-Miyafan Coolant Filtration System/Chip Conveyor

Hitachi Seiki CNC Horizontal Machining Center Model HC400, S/N HC-40389, Pallet Changer Type, (2) 15.75" x 15.75" Pallets, 360,000 Indexing, 20" X-Axis, 18" Y-Axis, 18" Z-Axis, 60-6,000 RPMs, 50 Position ATC, Chip Conveyor, Fanuc Model 11M CNC Control, Gun Coolant System

SALE DATE: TUESDAY, MAY 19, 10:30 AM (EDT)



Hurco VMC40 Vertical Machining Center



Matsuura MC-500V2 Vertical Machining Center



Matsuura MC-500V2 Vertical Machining Center



Matsuura MC-760V-DC Twin Spindle Vertical Machining Center



Matsuura MC-710V-2 Vertical Machining Center



Hardinge HLV-H Lathe



H.E.S. #500HN Lathe 22" x 68" CC



Webb Gap Bed Lathe 17"/29" Swing x 40" CC

Deckel Maho CNC Vertical Machining Center Model DMU 50 V, S/N 550 107, 19.68" x 14.96" Table, 19.68" X-Travel, 14.96" Y-Travel, 14.96" Z-Travel, Dual 30 Position ATC, Deckel Maho Model Millplus CNC Control

1994 **Mazak** Vertical Machining Center Model MTV-655/60, S/N 112677, 68.5" x 25.6" Table, 59.05" X-Axis, 25.6" Y-Axis, 25.6" Z-Axis, 30 Position ATC Mazak Mazatrol M-32 CNC Control, Dual Auger Type Chip Conveyor

Hurco CNC Vertical Machining Center Model VMC40, S/N BA8002125A, 39 1/4" x 17" Table Size, 25 Position ATC, Hurco Model Ultramax BMC-40 CNC Dual Display Monitor System

1985 **Matsuura** CNC Vertical Machining Center Model MC-500V2, S/N 85044818, 15" x 34" Table, 20" X-Axis, 14" Y-Axis, 17.7" Z-Axis, 20 Position ATC, Matsuura Yasnac CNC Control, Matsuura Model EN4-00443A

VERTICAL MACHINING CENTERS

1985 **Matsuura** CNC Vertical Machining Center Model MC-500V2, S/N 85044819, 15" x 34" Table, 20" X-Axis, 14" Y-Axis, 17.7" Z-Axis, 20 Position ATC, Matsuura Yasnac CNC Control, Matsuura Model EN4-00443A

1982 **Matsuura** CNC Twin Spindle Vertical Machining Center Model MC-760V-DC, S/N 82072794, 45" x 16" Table, 29" X-Axis, 16" Y-Axis, 24.5" Z-Axis, 6,000 Spindle RPM's, 25 Position Twin Automatic Tool Changers, Matsuura Fanuc System 6M CNC Control Model EN4-00486A

1981 **Matsuura** CNC Vertical Machining Center Model MC-710V-2, S/N 80101566 Ram-Master I, 43" x 14" Table, Travels 28" X-Axis, 13.7" Y-Axis, 18.79" Z-Axis, 25 Position ATC, Matsuura EN4-00384A CNC Control

1981 **Matsuura** CNC Vertical Machining Center Model MC-710V-2, S/N 81031797 Ram-Master I, 43" x 14" Table, Travels 28" X-Axis, 13.7" Y-Axis, 18.79" Z-Axis, 25 Position ATC, Matsuura EN4-00384A CNC Control

1981 **Matsuura** CNC Vertical Machining Center Model MC-710V-2, S/N 85044782, Ram-Master I, 43" x 14" Table, Travels 28" X-Axis, 13.7" Y-Axis, 18.79" Z-Axis, 25 Position ATC, Matsuura EN4-00384A CNC Control

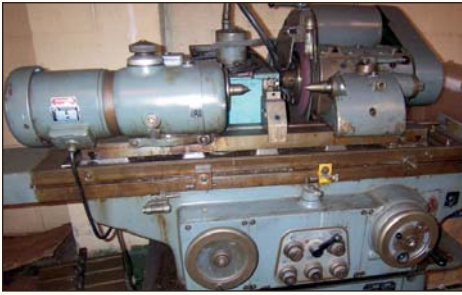
4TH AXIS ROTARY TABLES

Tsudakoma 8" 4th Axis
Tsudakoma 8" 4th Axis
Tsudakoma 8" 4th Axis
Haas 12" 4th Axis Rotary Table, S/N 312011
Haas 8" 4th Axis, W/ Haas Servo Control, Digital Readout

SALE SITE: 191 COOLIDGE AVE. ENGLEWOOD, NJ - USA

3

COMPLETE LOT CATALOG & PHOTOS AT: WWW.THOMASAUCTION.COM



H.TSCHUDIN HTG 400 Cylindrical Grinder



Brown & Sharpe 814U-Valumaster Cylindrical Grinder



Cosen MH-1016JA Horizontal Band Saw



Bridgeport CNC Vertical Mill, TRAK AGE2 Control



Bridgeport 2 HP Series I Vertical Mill



Cincinnati Milacron MT Monoset Tool & Cutter Grinder



Harig 618W Hydraulic Surface Grinder



DoAll 36" Vertical Band Saw Model V-36



Cleerman Layout Sliding Head Drill Model LD



Mitutoyo B504B Coordinate Measuring Machine



Mitutoyo B251 Coordinate Measuring Machine



Mitutoyo 14" Optical Comparator #PH350



Wilson Rockwell 3R Hardness Tester

CNC TOOLHOLDERS

Large selection of CAT 40-50, BT-35 & BT-40 Toolholders

LATHES

Hardinge Toolroom Lathe, Model HLV-H, S/N HLV-H-9377-T, Super-Precision, 10" Swing, 24" Center Distance, Carriage Feed, 125-3,000 Spindle RPM's, Collet Closer

Hardinge Toolroom Lathe, Model HLV-H, S/N HLV-H11247-T, Super-Precision, 10" Swing, 24" Center Distance, Carriage Feed, 125-3,000 Spindle RPM's, Collet Closer, Yuasa Travel Dial

Hardinge Second Operation Lathe, Model HC, S/N HC-5764-T, Super Precision Type, 13" Swing, 12" Center Distance, Carriage Feed, Speeds 1 and 2 125-1250 Speed 3 1050-3000, Nose Chuck, Collet Closer, 6 Position Turret, W/ Hardinge Model CT-A Threading Attachment

Hardinge Model #HC Hand Chucker, Model DV59, S/N DV-59-11882, 8" Swing, 28" Bed, Nose Chuck, Collet Closer

H.E.S. Engine Lathe Model 500HN, S/N 9035, 22" Swing, 68" Center Distance, 12" 3-Jaw Chuck, Quick Change Toolpost, Threading, Chasing Dial, Micrometer Stop

Webb Gap Bed Lathe Model 17"GX40, 17"/29" Swing, 40" Center Distance, Threading, Chasing Dial, Trav-a-dial Traveling Dial, Micrometer Stop, 10" 3-Jaw Chuck, 32-1800 Spindle RPM's, Mitutoyo 2-Axis DRO

Webb Gap Bed Lathe Model 17"GX40, S/N 9-8105-43, 17"/29" Swing, 40" Center Distance, Threading, Chasing Dial, Trav-a-dial Traveling Dial, Micrometer Stop, 10" 3-Jaw Chuck, 32-1800 Spindle RPM's

Wade Second Operation Lathe Model 94, S/N 94-762, 9" Swing, 16" Center Distance, Integral Drive, Micrometer Tool Post, 1/2 HP Motor, Cabinet Mounted

SALE TO BE CONDUCTED LIVE ONSITE & WEBCAST WWW.BIDSPOTTER.COM



Jet # SBR-30N Shear, Brake and Roll Unit



Edwards Power Squaring Shear #3.25mm Truecut



Sullair SR150 Compressed Air Dryer

MILLING MACHINES VERTICAL

Bridgeport CNC Vertical Milling Machine, S/N BR256150, 2 HP Motor, 9" x 48" Table, SWI Model TRAK A.G.E. 2 CNC Control

Bridgeport 2 HP Vertical Milling Machine, Model Series I, S/N 12BR-197390, 9" x 42" Power Feed Table, Acurite 2-Axis Digital Readout

Bridgeport 2 HP Vertical Milling Machine, S/N 12BR216498, 9" x 42" Power Feed Table, 7" Riser

Select Machine Tool Vertical Milling Machine Model 1/2VMILL, S/N 65457, 29 3/4" x 7" Table

Bridgeport 2 HP Vertical Milling Machine, Model Series 1, S/N 12BR-23267, 9" x 48" Power Feed Table

Bridgeport 2 HP Vertical Milling Machine, Model Series II Special, S/N 3074-S, W/ Bridgeport Series I 2 HP Milling Head, 11" x 58" Power Feed Table, Mitutoyo 2 Axis Digital Readout

Bridgeport 1 1/2 HP Vertical Milling Machine, S/N 12BR-170657, 9" x 42" Power Feed Table, 4" Riser, W/ Anilam Model Miniwizard 2 Axis Digital Readout

Bridgeport 1 1/2 HP Vertical Milling Machine, S/N 12BR-169605, 9" x 42" Power Feed Table, Acu-rite III 2-Axis Digital Readout

Hurco 3 HP Vertical Milling Machine, Model SM1, S/N SD-8009085, 12" x 42" Power Feed Table, Acurite III 2-Axis Digital Readout

Bridgeport Shaping Attachment, S/N E-64642

Bridgeport Shaping Attachment, S/N E-15172

MILLING MACHINES - HORIZONTAL

Southbend (SBL) Horizontal Milling Machine Model F2UE, S/N 5103830, 12" x 47" Table, 40-1800 Spindle RPM's, Mitutoyo Model Digimatic Digital Readout

GRINDERS - TOOL & CUTTER

Cincinnati Milacron Monoset Cutter & Tool Grinder Model MT, S/N 3152A0180-0023

Cincinnati Milacron Monoset Cutter & Tool Grinder Model MT, S/N 3152A0180-0021

K.O. Lee Tool Grinder Model Bravo 300, S/N 24739

GRINDERS - SURFACE

1972 Ermando Rosa Hydraulic Surface Grinder, Model RTRC-1000, S/N 7210260, 14" x 38" Capacity, Walker-Hagou 12" x 20" Permanent Magnetic Chuck, Wheel Dresser, Coolant System

Harig Hydraulic Surface Grinder, Model 618W, S/N 3849-W, Walker 6" x 18" Electro Magnetic Chuck, Coolant System

Boyar Schultz Hydraulic Surface Grinder Model Challenger-2A618, S/N CH-3254-2A, Walker 6" x 18" Electro Magnetic Chuck, Over The Wheel Dresser

Brown & Sharpe Hydraulic Surface Grinder Model 2L, S/N 523-2-1995, 6" x 18" Capacity, W/ 5" x 10" Electro Magnetic Chuck

Brown & Sharpe Hydraulic Surface Grinder Model Micromaster 612, S/N 523-612-3186, 6" x 12" Permanent Magnetic Chuck

GRINDERS - CYLINDRICAL

H.TSCHUDIN Cylindrical Grinder Model HTG 400 S/N 63652, 7.874" Swing Over Table, 15.748" Between Centers, 13.75" Wheel Diameter

Brown & Sharpe Cylindrical Grinder Model 814U-Valumaster S/N 525-8144-2998

HONE

Sunnen Precision Honing Maching Model MBB-1600 S/N 41986



Clark 4,500 lb LPG Forklift #C500-45

BAND SAWS

2005 Cosen Horizontal Band Saw Model MH-1016JA, S/N 94196185, 10" X 16" Capacity

DoAll 36" Vertical Band Saw Model V-36, S/N 36535598, 30" x 30" Tilting Table, 16 3/4" x 20" Sub Table, Fence

Kalamazoo Horizontal Band Saw Model H9AW, S/N 7985, 9" x 18" Capacity

DRILL PRESSES

Rockwell 15" Drilling/Tapping Machine Model 15-201, S/N 1810064, Floor Type, Torque Control, Speed Control, Drill Mode/Tap Mode Switch, Drill Mode Spindle Speed RPM's 0-450-5900, Tap Mode Spindle RPM 0-165-2200, 6-Steps Type, Manual Reverse Switch

(6) Clausing 15" Drill Press Model 1751, S/N 125626, 125224, 125293, 12565624, 125622, 125294, Floor Type, Variable Speed

(4) Clausing 15" Drill Press, Model 1641, S/N 125541, 125491, 125557, 125453, Floor Type, Variable Speed

Cleerman Layout Sliding Head Drill Model LD, S/N LD-452, 36" X 18" Table, 5-2 1/2 HP, Parker Model Compumotor/Spaulding 2-Axis DRO

CNC - TOOLROOM - INSPECTION - PLANT SUPPORT



Large Assortment of CNC Tooling



View of Inspection Tooling



View of Kurt Vises

COORDINATE MEASURING MACHINES

Mitutoyo Coordinate Measuring Machine Model B504B, S/N 016108101, Bridge Type, Granite 33 3/4" x 33 3/4" x 7" Surface Plate, 26 1/4" Between Columns, W/ Renishaw Model MIH Digital Probe, Gateway 2000 P5-75 Computer System, MAG-1 Probe Control

Mitutoyo Coordinate Measuring Machine Model B251, S/N 830447, Bridge Type Granite 50 1/2" x 80" x 12" Surface Plate, 34 1/4" Between Columns, Renishaw PH 1 Probe, Renishaw Model PH8 Probe, Mitoyo Mag 1 Probe Control, IBM Computer System

Mitutoyo Coordinate Measuring Machine Model B231, S/N 8505870, Bridge Type, Granite 50 1/2" x 43 1/2" x 8" Surface Plate, 34 1/2" Between Columns, Renishaw Model MI Digital Probe, Mituoyo Model MAG-1 Probe Control, Mituoyo 3-Axis Programmable Digital Readout, Uptek Computer System

INSPECTION

Mituoyo 14" Optical Comparator Model PH350, S/N 020669, Code #172-952A, 15 3/4" x 6" Work Stage, 10X Lens, Mituoyo Micropak 2 2-Axis Digital Programmable Readout

Trimos Digital Height Gage Model VERTICAL S/N 1208

Wilson Rockwell Hardness Tester Model 3R S/N 3R-1651

Optischer Teilkopf Optical Centering Machine

Miscellaneous Inspection: Tombstones, Granite Surface Plates, Milling Vises, Vises, 4-Ledge 2-Ledge and 0-Ledge Surface Plates, Fowler Micrometer, Calipers, Hole Gages, V-Blocks, Sine Plates, Dial Calipers, Starrett Micrometers, Mituoyo Micrometers, etc.

PRESS BRAKES

Di-Acro Hydra Power Press Brake Model 14-48-2, S/N 6820882870, 17 Ton Capacity, 48" Bed, 6.5" Throat, Manual Back Gage, 36" Between Housings

Verson Press Brake, S/N 15923-1648, 15 Ton Capacity, 48" Bed, 7 1/2" Shut Height, 2" Stroke Of Ram, 1 1/2" Adjustment of Ram

Jet Shear, Brake and Roll Unit, Model SBR-30N, S/N 754031, 20 Gauge, Bench Top Type

SHEAR

Edwards Power Squaring Shear Model 3.25mm Truecut S/N 3.25/2000/DD, 79" Capacity, Manual Back Gage

PRESSES - HYDRAULIC

Hannifin 5 Ton Hydraulic Press, Model F-50, S/N C-10608-1, C-Frame Type, 16" Left to Right x 11" Front to Back Bed Area, 7" Throat, 16" Under Ram

Carolina Tool & Equipment 50 Ton Hydraulic Shop Press, Model CMP-1100, S/N CMP-5321, Manual Pump, 28" Between Posts

PRESSES OBI

Famco OBI Press 55-AMS, S/N P-63UTR01, 14" Left to Right X 7 1/4" Front to Back Bed Size

AIR COMPRESSORS/DRYERS

Chicago 40 HP Pneumatic Rotary Screw Air Compressor Model 185-EZA, S/N 27XX18A1605A, Enclosed

(2) **Dayton** 10 HP Air Compressor Model 5Z405E, S/N 111005683 & 090100679, 2-Stage, Horizontal Tank Mounted

Sullair Compressed Refrigerated Air Dryer Model SR150, S/N 2996140001

REMOVAL DATE:

**PLEASE NOTE ALL EQUIPMENT
MUST BE REMOVED NO LATER**

THAN MAY 29TH,

NO EXCEPTIONS

FORKLIFTS

Clark 4,500 Lb Electric Narrow Aisle Forklift, Model NP500-45, S/N NP245-123-4001/FA, 234" Lift Height, 2-Stage Mast, Extend Forks, Outriggers, ROPS

Clark 4,500 lb LPG Forklift Model C500-45, S/N 355-177-4382, 106" Lift Height, 2 Stage Mast, Solid Tires, ROPS

Economy 1,000 Walkie Electric Forklift

PLANT SUPPORT

Minuteman Walkie Electric Floor Scrubber, Model 170

Uline 5,000 Lb Pallet Jack Model H-1043

Burr King 2" Belt Sander, Model 960, Pedestal Mounted

Wallace Products Portable 1 Ton Gantry Crane, S/N 5800, 113" Between Posts, W/ 4' Overhanging Extension

Ruemelin Shot Blast Cabinet Model AG, S/N 39113, 48" x 30" Dust Collector

Vidmar Cabinets (35+) Assorted Vidmar - Lista Cabinets - Multi Drawer - 2-Door Storage

Donaldson Torit Dust Collectors, Shop Hoist, Stock Racks, Pedestal Grinders, Shop Fans, 2-Door Supply Cabinets,

AUCTION INFORMATION

MAJOR ONSITE & WEBCAST AUCTION TO BE CONDUCTED LIVE ONSITE AND WEBCAST

AUCTION SITE

191 Coolidge Ave
Englewood, NJ

SALE DATE

Tuesday, May 19, 10:30 AM (EDT)

INSPECTION

Monday, May 18, 9 to 4 PM (EDT)

BUYER'S PREMIUM

12.5% Onsite & 15% Webcast

THOMAS INDUSTRIES APPRAISAL DIVISION

Accurate appraisals
supported by over 56
years of conducting
worldwide auctions
and liquidations.

Call (203) 458-0709 for
a confidential appraisal
of your assets. One piece
of equipment or
an entire plant.



WEBCAST BIDDING AVAILABLE:



ONSITE REGISTRATION - PAYMENT TERMS

In order to obtain a bid paddle a \$100.00 refundable fee is due at time of registration. Payment terms: A 25% deposit due day of sale, payment in full within 24 hours, by cash, certified check or wire transfer (we do not accept credit cards). Company or personal checks will only be accepted if accompanied by a bank letter, subject to Thomas' approval guaranteeing unqualified payment to Auctioneer. Any and all checks must be drawn on a United States Bank in US Funds. All purchases are subject to applicable federal, state and local taxes unless auctioneer is provided with a valid sales tax exemption certificate.

WEBCAST REGISTRATION - PAYMENT TERMS

All Internet bidders wishing to bid offsite will be required to register with www.bidspotter.com. All successful internet bidders will be invoiced within 24-hours following the auction sale by email, with payment instructions. Payment is due in full within 48-hours following the auction sale, by cash, certified check or wire transfer (we do not accept credit cards).

SALES & USE TAX:

All purchases are subject to applicable federal, state and local taxes unless auctioneer is provided with a valid sales tax exemption certificate.

REPRESENTATION OF EQUIPMENT

All items are sold As Is - Where Is with all faults. The Auctioneer expressly disclaims any warranty of merchantability or fitness for a particular purpose. It is the bidders' sole responsibility to examine or inspect items prior to placing their bids.

Disclaimer: Please Note Items Offered May Be Subject To Prior Sale. Auctioneer is not responsible for errors, omissions, additions or deletions. Items offered may not necessarily be sold as described and/or photographed. Buyers should verify all aspects of their potential purchases during inspection as all items offered will be sold "as is, where is" with all faults. Please check with the auctioneer's office for additions or deletions.

PROXY BIDS

If you are unable to participate in this sale Proxy Bids are accepted. Proxy bids may be submitted online directly from the lot catalog or call (203) 458-0709 for a proxy bid form.



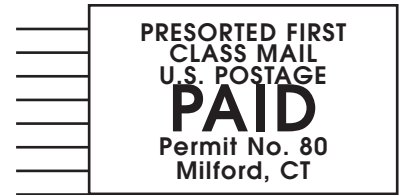
THOMAS INDUSTRIES
2414 Boston Post Road
Gulfport, CT 06437-2310
(203) 458-0709 • (203) 458-0727 Fax
<http://www.thomasauktion.com>

REMOVAL DATE: PLEASE NOTE ALL EQUIPMENT MUST BE REMOVED NO LATER THAN MAY 29TH, NO EXCEPTIONS

Under Management of:



THOMAS INDUSTRIES
2414 Boston Post Road
Guilford, CT 06437-2310
(203) 458-0709 • (203) 458-0727 Fax
<http://www.thomasauction.com>



MAJOR ONSITE & WEBCAST AUCTION

COMPLETE CLOSURE OF AVOT LLC

FEATURING: (18) CNC MACHINING CENTERS & TURNING CENTERS BY DAEWOO, DECKEL, MAZAK, MATSUURA, HITACHI-SEIKI, MORI-SEIKI AND CINCINNATI MILACRON

SALE SITE: 191 COOLIDGE AVE. ENGLEWOOD, NJ

SALE DATE: TUESDAY, MAY 19, 10:30 AM (EDT)

INSPECTION: MONDAY, MAY 18, 9 TO 4 PM (EDT)

FORWARDING SERVICE REQUESTED

FEATURING: (18) CNC MACHINING CENTERS & TURNING CENTERS BY DAEWOO, DECKEL, MAZAK, MATSUURA, HITACHI-SEIKI, MORI-SEIKI AND CINCINNATI MILACRON



Bridgeport CNC Vertical Mill, TRAK AGE2 Control



H.TSCHUDIN HTG 400 Cylindrical Grinder



Mitutoyo B504B Coordinate Measuring Machine