

# LIVE ONSITE & WEBCAST AUCTION

- CNC TURNING & MACHINING • AUTOMATIC SCREW MACHINES
- COATING & FINISHING EQUIPMENT • MACHINE TOOLS
- INSPECTION • MATERIAL HANDLING

By Order of:

## T&A Screw Machine Products, Inc.

64 Avenue of Industry, Waterbury, CT 06705



**SALE DATE: Wednesday, August 20<sup>th</sup>, 10:30 AM (ET)**

**Open House Inspection: Tuesday, August 19<sup>th</sup>, 9 AM to 4 PM**



Sale under Management of:  
**Thomas Industries, Inc.**  
2414 Boston Post Road, Guilford, CT 06437-2310  
Phone (203) 458-0709 • Fax (203) 458-0727  
email: [gavel@thomasauction.com](mailto:gavel@thomasauction.com)  
[www.thomasauction.com](http://www.thomasauction.com)





# LIVE ONSITE & WEBCAST AUCTION - WEDS, AUGUST 20<sup>TH</sup>, 10:30 AM (ET)



Shuttle Type Pallet Table

New 1998

Turret Style

Brother # TC-324N CNC Milling & Drilling Machine



New 2008

HAAS "Super Speed" # VF-2SS CNC Vertical Machining Center



Many Options

New 2008

HAAS # SL-20 CNC Slant Bed Turning Center



New 2012

Many Options

1 of 2

HAAS # ST-30 CNC Slant Bed Turning Center



New 2012

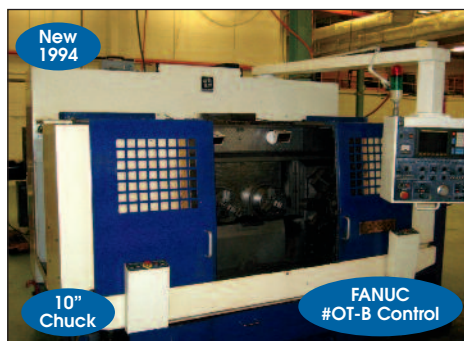
ChipBlaster High Pressure Coolant System



New 1992

w/ LNS Hyd. Barfeed

Citizen # E-25J CNC Swiss Type Screw Machine



New 1994

10" Chuck

FANUC #OT-B Control

Hwacheon # ECO-2-SP-3 "Twin Spindle" CNC Chucker



New 1995

8" Chuck

Okuma "Cadet" # LNC-8T CNC Turning Center

## CNC MACHINING CENTER

(New 2008) HAAS "Super Speed" # VF-2SS CNC Vertical Machining Center w/ 20 HP Direct Drive 12,000 RPM Spindle, (24+1) Position High Speed Auto Tool Changer, #CAT-40 Spindle, 14" x 36" Table, 4th Axis Ready, Travels: 30"-X, 16"-Y, 20"-Z, Tool Setter, Infrared Tooling Probe, Full Enclosure, Coolant System, Chip Auger & HAAS CNC Control, S/N 1068607

## CNC TAPPING & DRILLING CENTER

(New 1998) Brother # TC-324N CNC Turret Style Milling & Drilling Machine w/ Indexing Pallet Table & Brother CNC Control, S/N 112042

## CNC TURNING CENTERS

(New 2012) HAAS # ST-30 CNC Slant Bed Turning Center w/ 10" Kitagawa 3-Jaw Hyd. Chuck, (12) Position Turret, Tailstock, Parts Catcher, Chip Conveyor, Chip Blaster High Pressure Coolant System, HAAS CNC Control, S/N 3091221

(New 2012) HAAS # ST-30 CNC Slant Bed Turning Center w/ 10" Kitagawa 3-Jaw Hyd. Chuck, (12) Position Turret, Tailstock, Parts Catcher, Chip Conveyor, Chip Blaster High Pressure Coolant System, HAAS CNC Control, S/N 3091261

(New 2008) HAAS # SL-20 CNC Slant Bed Turning Center w/ 8" Kitagawa 3-Jaw Hyd. Chuck, (12) Position Turret, Parts Catcher, Auto-Door, Chip Conveyor, 20 HP & HAAS CNC Control, S/N 3080894

(New 1992) Citizen # E-25J CNC Swiss Type Screw Machine w/ Dual Opposed Turrets, (2) Work Turrets, Chip Conveyor, LNS Hydro-Bar Feed, Citizen-Cincom CNC Control, S/N W4023

(New 1994) Hwacheon # ECO-2-SP-3 "Twin Spindle" CNC Chucker w/ (2) 10" Hyd. Chucks, (2) 8-Position Turrets, 20 HP, Coolant System, Chip Conveyor & FANUC O-TB CNC Control, S/N M0763421-31

Okuma "Cadet" # LNC-8T CNC Turning Center, 8" Hyd. Chuck, (12) Position Turret & Okuma OSP-5020L CNC Control, S/N 0607C267 (New Approx. 1995)

(New 1996) Methods Slant 50 CNC Slant Bed Turning Center, 10" Hyd. Chuck, (10) Position Turret, Tailstock, Chip Conveyor & Yasnac CNC Control, S/N 96183

## PRE-SETTER

Citizen-Cincom # TP-1000 Tool Presetter

THIS BROCHURE IS A PARTIAL LISTING. COMPLETE LOT LISTING AT [WWW.THOMASAUCTION.COM](http://WWW.THOMASAUCTION.COM)



# OPEN HOUSE INSPECTION: TUES, AUGUST 19<sup>TH</sup>, 9 AM TO 4 PM



Methods Slant 50 CNC Slant Bed Turning Center



New Britain-Gridley # 61 (6-Spindle) Automatic Multi-Spindle Screw Machine



Acme Gridley # RA-4 (4-Spindle) Automatic Multi-Spindle Screw Machine



This Machine Available for immediate Sale...Please Contact Auctioneer for Details

C.O.E. Automated Paint Line



This Machine Available for immediate Sale...Please Contact Auctioneer for Details

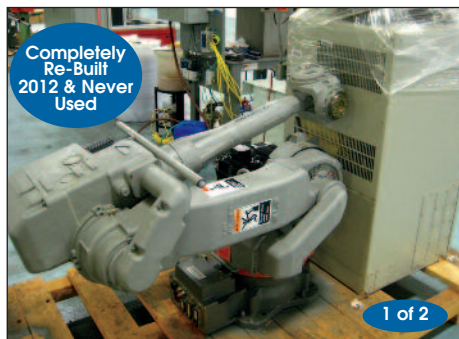
Automated Phosphate Coating Line



Singleton # SCCH-20 Salt Bath Corrosion Test Chamber



Amada #HA-250W Automatic Horizontal Band Saw



Yaskawa Motoman #CPO-HP-50 CNC Robot



Marietta NDT #360 Ultrasonic Inspection Non-Destructive Testing Machine

## AUTOMATED PAINT LINE

(New 2012) C.O.E. Automated Paint Line w/ (1) 8' x 8' Paint Booth, Powered Vertical Spindle Conveyor, (2) Spray Head Stands, (4) Spray Heads, (3) Pressure Paint Pots, Manual Drying Section w/ (2) Infrared Lamps and Blower, Master Control Panel & PLC, S/N 98550-37522

## AUTOMATED PHOSPHATE COATING LINE

(New 2012) Automated Phosphate Coating Line w/ Dedicated Gas Boiler w/ Floor Mounted Automatic Carrier System, (8) Stations w/ 40" S.S. Tanks, (3) Singles & (3) Doubles, (3) S.S. Barrel Rotators, Programmable Carrier, Heaters, Pumps & PLC Control

## MULTI-SPINDLE SCREW MACHINES

- Acme Gridley # RA-6 6-Spindle Multi-Spindle Screw Machine, 3 1/2" Cap., Watkins Motorized Saw, Spiral Chip Conveyor, Bar Feed, S/N 94077
- Acme Gridley # RA-4 4-Spindle Multi-Spindle Screw Machine, 4 3/4" Cap., Watkins Motorized Saw, Flat Chip Conveyor, Bar Feed, Tapping, S/N 90134
- New Britain # 51 6-Spindle Multi-Spindle Screw Machine, 1" Cap., Watkins Motorized Saw, Threading, Back Working, Bar Feed, S/N 37371 (New 1970)
- New Britain # 61 6-Spindle Multi-Spindle Screw Machine, 2 1/4" Cap., Watkins Motorized Saw, S/N 32354
- New Britain # 61 6-Spindle Multi-Spindle Screw Machine, 1 5/8" Cap., Watkins Motorized Saw, Tapping, Bar Feed, S/N 31209
- New Britain Gridley # 61 6-Spindle Multi-Spindle Screw Machine, 2 1/4" Cap, Watkins Motorized Saw, Spiral Chip Conveyor & Bar Feed, S/N 29866
- New Britain Gridley # 61 6-Spindle Multi-Spindle Screw Machine, 2 1/4" Cap., Watkins Motorized Saw & Bar Feed, S/N 25758
- New Britain-Gridley # 61 6-Spindle Multi-Spindle Screw Machine, 2 1/4" Cap., Watkins Motorized Saw, Tapping, S/N 29272
- New Britain-Gridley # 61 6-Spindle Multi-Spindle Screw Machine, 2 1/4" Cap., Watkins Motorized Saw, Tapping, S/N 29785
- New Britain Gridley # 61 6-Spindle Multi-Spindle Screw Machine, 1 5/8" Cap., Watkins Motorized Saw, Tapping, Bar Feed, S/N 25804
- New Britain Gridley # 61 6-Spindle Multi-Spindle Screw Machine, 1 5/8" Cap., Watkins Motorized Saw, Tapping, Bar Feed, S/N 26251
- New Britain Gridley # 61 6-Spindle Multi-Spindle Screw Machine, 1 5/8" Cap., Watkins Motorized Saw, Tapping, Bar Feed, S/N 28581
- New Britain Gridley # 61 6-Spindle Multi-Spindle Screw Machine, 2 1/4" Cap & Bar Feed, S/N 26536
- New Britain Gridley # 61 6-Spindle Multi-Spindle Screw Machine, 1 5/8" Cap., Tapping, S/N 26767
- New Britain-Gridley # 61 6-Spindle Multi-Spindle Screw Machine, 2 1/4" Cap., S/N 29527



# CNC TURNING & MACHINING - SCREW MACHINES - COATING & FINISHING EQUIPMENT



New Britain-Gridley # 51 (6-Spindle) Automatic Multi-Spindle Screw Machine



F.P.I. Stainless Steel Parts Washer # RBW-003-2SP



BeaverMatic Automatic Electric Box Furnace Model # 68-40EBF



View of BeaverMatic Digital Controls



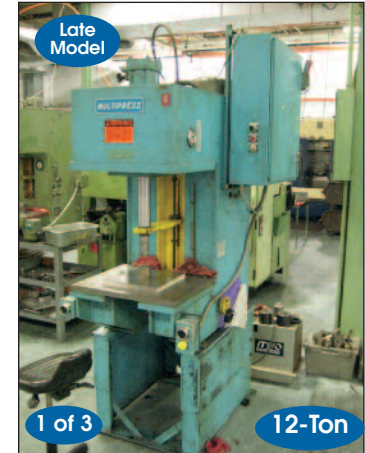
Bridgeport 2 HP Series I Vertical Miller



Boyar-Schultz # H-612 Surface Grinder



Systematic Automation F1-20C Auto Screen Marking Machine



Denison Multipress Gap Frame Hydraulic Press

## PARTS WASHERS

(New 1995) F.P.I. Stainless Steel Parts Washer # RBW-003-2SP (Aqueous), Approx. 27" x 58" Rotating Parts Basket w/ Wash, (2) Rinse & (1) Dryer Cycle, Digital Temp Controls & PLC Control S/N F4258-1

Coscina Screw Type Pass-Thru Parts Washer (Aqueous) w/ (1) Wash & (2) Rinse Sections, Blower, (2) Digital Temp Controls, S/N MDRW4-6 (New 2/1992)

Precision Automatic # B-0100 (Barsol Solvent) Parts Washer, Spiral Chamber, Pass-Thru Type, S/N 0536

## ROBOTS

Yaskawa Motoman #CPO-HP-50 CNC Robot w/ Control S/N S6M015-2-1 (New 6/2006 and Rebuilt 2012)

Yaskawa Motoman # HP-20 CNC Robot w/ Control, S/N RY8537-6309-3 (New 3/2006 and Rebuilt 2012)

## FURNACES

(New 2012) BeaverMatic Automatic Electric Box Furnace Model # 68-40EBF Electric Annealing Oven, Max. Temp. 1700 Degrees F, Single Automatic Pneumatic Door w/ Digital Controls S/N 212-33-2

## PRESSES

Multipress # W-4T-120M/C-404FSI, Floor Type Gap Frame Hydraulic Press, 12-Ton Cap., S/N M-3825

Denison Multipress # RO-45LC204FSD266D210A201 Gap Frame Hydraulic Press, 6-Ton Cap., w/ Metal Stand, S/N 19109

Multipress # W5A-2P Gap Frame Hydraulic Press, 2-Ton Cap., w/ Metal Stand, S/N M-4650

## BAND SAWS - HORIZONTAL

(New 1998) Amada # HA-250W Automatic Horizontal Band Saw w/ Coolant, Feed, Cycle Control & Chip Auger, S/N 25350401

## MILLING MACHINES

Bridgeport 2 HP Series I Vertical Miller w/ 9" x 48" Table, Power Feed, 1 Shot Lube, Digital Readout, S/N 244687 (New 1986)

Cincinnati # CINEL 60-205-12 Plain Horizontal Milling Machine w/ 1500 RPM, #50 NTB Spindle, 12" x 54" Table, Power Feeds, S/N 5J2P5P-15

## GRINDERS

Harig # 612, 6" x 12" Cap. Surface Grinder w/ Walker 612 Permanent Magnetic Chuck, S/N 15790 (New 1984)

Boyar-Schultz # H-612 Challenger, 6" x 12" Cap. Surface Grinder w/ Walker 612 Permanent Magnetic Chuck, S/N 28242

Grey Heavy Duty Drill Grinder w/ Chucking Head, Coolant Pump & Tank

Sellers # 6G 2 HP Drill Grinder, S/N 02-1549

B&D #85 1HP Double End Grinder 10" w/ Pedestal S/N E5066625

Baldor # 8100W, 3/4 HP Double End Grinder w/ Pedestal, S/N P0107



REGISTER AND BID AT [WWW.THOMASAUCTION.COM](http://WWW.THOMASAUCTION.COM)





# COMPLETE LOT CATALOG & PHOTOS

## WWW.THOMASAUCTION.COM



Crown # RC-3020-30 Stand Up Riding Type Electric Forklift



Hyster # E-60-XM Electric Forklift Truck



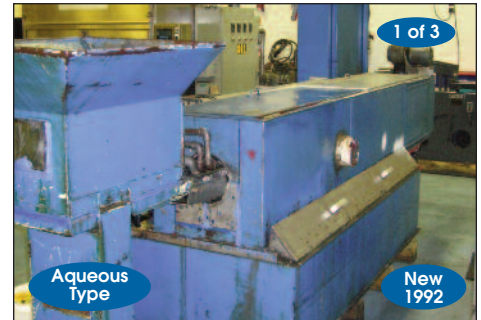
Genie Scissor Lift Model Z-30



Eaton # SRW3-DV-25HP-230, 25 HP Rotary Air Compressor



R.P.S. # 350 Electric Riding Type Floor Scrubber



Coscina Parts Washer



Henderson # 126-3 Tilting Tumbling Barrel



Miller # 252 Millermatic Welder



McKenzie Floor Type Chip Separator

### INSPECTION EQUIPMENT

(New 2012) Marietta NDT Model # 360 Ultrasonic Inspection Non-Destructive Testing Machine w/ Immunol Bath Submersion, (2) Test Heads & Dell T3500 Control PC

(New 2012) Brown & Sharpe # Micro-Hite DCC-454 CMM Machine 22" x 29" Granite Table, Tesa-Star-1 Probe & Control PC, S/N 0112-0002

SPI # EHT-3R Rockwell Hardness Tester, S/N 0001962 Assorted Inspection Tools Including: (6) Snap Gages w/ Dial Indicators on Base Plates, (3) Assorted Universal Concentricity Gages, Mitutoyo Surf Test Gage, (14) Assorted Digital Gages on Stands, (2) Lyon 8-Drawer Double Suspended Cabinets w/ Assorted Mikes, Ring Gages, Bore Gages, Chamfer Gages, Ring Thread & Plug Thread, Snap Gages, Go-No-Go Plug Gages, Stands, Bore Gages, Ring Thread, Brown & Sharpe Holomatic Gages, Pin Gage Sets, Thread Gages, (2) ID Bore Gages, 18" x 24" Black Granite Surface Plate

### MARKING MACHINES

(New 2012) Systematic Automation, Inc. # F1-20C Automatic Precision Silk Screen Marking Machine w/ Parts Rotator for Round Parts, S/N SA003527

### FORKLIFTS - MATERIAL HANDLING

(New 2002) Hyster # E-60-XM Electric Forklift Truck w/ 6,000 Lb Cap., 181.9" Mast, Solid Tires, Hydraulic Side Shifter, Lights, Overhead Guard, Battery Charger, S/N F108V15677W

(New 2004) Crown # RC-3020-30 Stand Up Riding Type Electric Forklift w/ 3,000 Lb Cap., 36V, Hydraulic Side Shifter, Overhead Guard, S/N 1A226970

### SUPPORT-TOOLING

Suburban Tool Rotary Indexer, Indexing Collet Fixture, Poly-Choke Grinding Fixture, Sperman Radius Dresser, (2) Spindex Style Indexing 5C-Collet Fixtures, (1) Grinding & (2) Drill Vises, Index Fixture w/ 6" 3-Jaw Chuck

### AIR COMPRESSORS

Eaton # SRW3-DV-25HP-230, 25 HP Rotary Air Compressor, S/N 071007R

### PLANT SUPPORT

Torit # 70-CAB Cabinet Type Dust Collector S/N IG331039

Wilton # 4210 6"/10" Disc/Belt Sander w/ Base, S/N 09090061

Atlas 20 Ton Cap Hydraulic/Pneumatic H-Frame Press

Henderson # 126-3 Open Mouth Tilting Tumbling Barrel w/Manual Tilt

McKenzie Floor Type Chip Separator, S/N E-606

Singleton # SCCH-20 Salt Bath Corrosion Test Chamber w/ Supply Tanks S/N 28901

R.P.S. # 350 Electric Riding Type Floor Scrubber, 24V, w/ Electric Charger, S/N 43599

Assorted Shop Support Equipment: (5) Sections of Metal Adjustable Shelving, Forklift Type Work Platform, (4) Sections of Heavy Duty Pallet Racking, (2) Sections of Medium Duty Pallet Racking, (2) Portable Stair Units, Rod

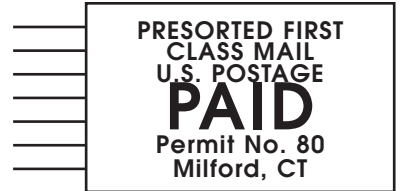
Carts, Pallet Jacks, Tree Type Storage Rack, Plastic Totes, Metal Totes, Jarke Stacking Rod Racks & Multi-Drawer Tool Cabinets

MANY, MANY MORE MACHINES AVAILABLE NOT PICTURED IN BROCHURE!!!!

Under Management of:



**THOMAS INDUSTRIES**  
2414 Boston Post Road  
Guilford, CT 06437-2310  
(203) 458-0709 • (203) 458-0727 Fax  
<http://www.thomasauction.com>



## LIVE ONSITE & WEBCAST AUCTION

By Order of:

**T&A Screw Machine Products, Inc.**

64 Avenue of Industry,  
Waterbury, CT 06705

### SALE DATES:

Wednesday, August 20<sup>th</sup>,  
10:30 AM (ET)

### INSPECTION:

Tuesday, August 19<sup>th</sup>, 9 AM to 4 PM

**COMPLETE LOT CATALOG & PHOTOS  
AT [WWW.THOMSAUCTION.COM](http://WWW.THOMSAUCTION.COM)**

**FORWARDING SERVICE REQUESTED**

**• CNC TURNING & MACHINING • AUTOMATIC SCREW MACHINES • MACHINE TOOLS  
• COATING & FINISHING EQUIPMENT • INSPECTION • MATERIAL HANDLING**



## AUCTION INFORMATION LIVE ONSITE & WEBCAST AUCTION

By Order of:

**T&A Screw Machine Products, Inc.**  
64 Avenue of Industry, Waterbury, CT 06705

**AUCTION DATE:**  
Wednesday, August 20<sup>th</sup>, 10:30 AM (ET)

**OPEN HOUSE INSPECTION:**  
Tuesday, August 19<sup>th</sup>, 9 AM to 4 PM

**Disclaimer:** Auctioneer is not responsible for errors, omissions, additions or deletions. Items offered may not necessarily be sold as described and/or photographed. Buyers should verify all aspects of their potential purchases during inspection as all items offered will be sold "as is, where is" with all faults. **Please check with the auctioneer's office for additions or deletions.**

**Buyer's Premium:** 15% Onsite & 18% Webcast

**Payment Due In Full:** Thursday, August 21<sup>st</sup>, 2014

**Payment Types:** Cash, Certified Check or Wire Transfer

**Removal:** Final Date For Removal is Friday, August 29, 2014

**Onsite Registration:** Onsite registration is on the morning of the sale. In order to obtain a bid paddle a \$100 refundable deposit is due at time of registration

**LIVE WEBCAST  
BIDDING AVAILABLE:**



**TECHNICAL INFORMATION**  
Tom DeCosmo  
(413) 478-0030

**PAYMENT INFORMATION**  
Irina Lekhmus  
(203) 458-0709 X108

**ONSITE INFORMATION**  
Jon Standish  
(203) 915-3430



**THOMAS INDUSTRIES**  
2414 Boston Post Road  
Guilford, CT 06437-2310

**REGISTER AND BID AT  
[WWW.THOMSAUCTION.COM](http://WWW.THOMSAUCTION.COM)**

(203) 458-0709  
(203) 458-0727 Fax  
<http://www.thomasauction.com>