



SLICK INSPECTION LTD.
2038-12th AVE NW
Medicine Hat, AB, T1C 2A7
PH: 403-527-9854
FAX: 403-527-9867
office@slickinspection.com

MT / PT INSPECTION REPORT

Technician Sign: 

Technician Certification:

JOHN MARTIN
CGSB Level II RT MT PT
SNT-TC-1A Level II RT MT PT
REG. #27301

Assistant:

Date: DEC. 4, 2025
Client:

RARE OILFIELD

Location: **RARE OILFIELD SHOP**

Client Rep Signature:

Upon approval/acceptance by the Contractor the liability for the accuracy of final product becomes responsibility of the Contractor

Invoice #:

JM25433

Report #:

JM25433-M1

Page:

1 of 4

Acceptance Code:

ASME Sec.VIII, Div. 1 2023-UW 51

Specification:

MT-Rev.9

Procedure:

MT 2 - Wet Visible, Black On White

Technique:

Contractor:

RARE OILFIELD

A.F.E.#:

Code.#:

P.O.#:

Project:

Job.#:

FIRE TUBE INSPECTION

FIRE TUBE:



NAME PLATE:



PERFORMED MAGNETIC PARTICLE INSPECTION ON ALL WELDS OF THE ABOVE FIRETUBE. **FOUND MULTIPLE INDICATIONS AS RECORDER IN REPORT.**

Equipment & Consumables Used	Flourescent>	Black/White>	Aerosol>	Visible>	Dry>	Puffer>
MT 2: Magnavis White Contrast Paint: WCP-2 / Magnavis Black Partical Suspension: 7HF			Calibration Block: West. Instruments S/N:2997 Cal Verified to 10lb Daily	Continuous AC Current Mag Lead Time: 10 Seconds LED Flash light>	Sentenal Yoke: MP-A- 2L S/N: MP4083	Light Meter:XR-1000 Spectronics S/N:1752289 Cal Date: May 31,2025 Min Light Intensity: ≥ 100 FC Visible



MT / PT INSPECTION REPORT

SLICK INSPECTION LTD.
2038-12th AVE NW
Medicine Hat, AB, T1C 2A7
PH: 403-527-9854
FAX: 403-527-9867
office@slickinspection.com

Technician Sign:

Technician Certification:

JOHN MARTIN
CGSB Level II RT MT PT
SNT-TC-1A Level II RT MT PT
REG. #27301

Assistant:

Date:
Client:

DEC. 4, 2025

RARE OILFIELD

Location:

RARE OILFIELD SHOP

Client Rep Signature:

Upon approval/acceptance by the Contractor the liability for the accuracy of final product becomes responsibility of the Contractor

Invoice #:

JM25433

Report #:

JM25433-M1

Page:

2 of 4

Acceptance Code:

ASME Sec.VIII, Div. 1 2023-UW 51

Specification:

MT-Rev.9

Procedure:

MT 2 - Wet Visible, Black On White

Technique:

RARE OILFIELD

Contractor:

A.F.E.#:

Code.#:

P.O.#:

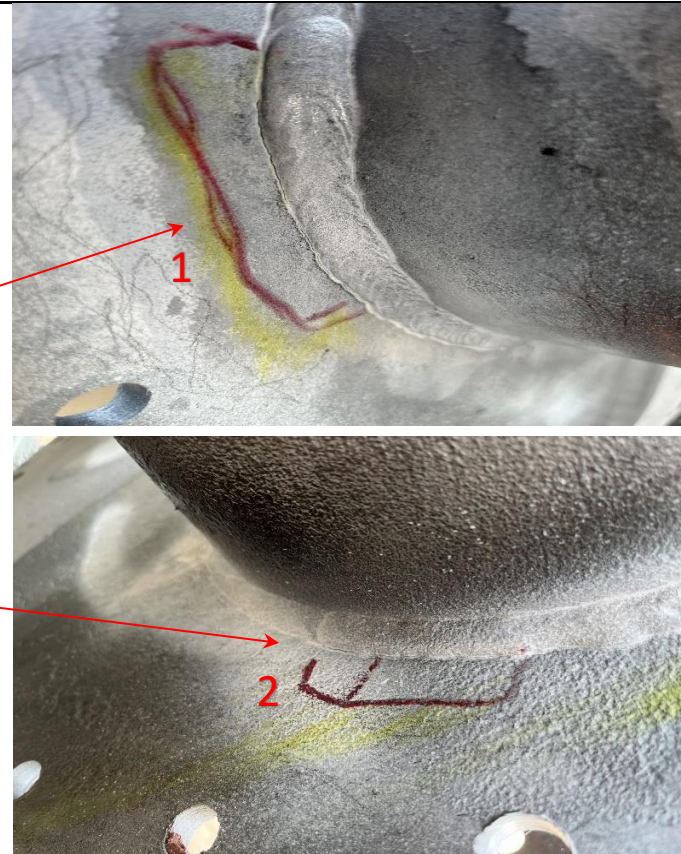
Project:

Job.#:

OUTER FLANGE WELDS



OUTER FLANGE WELD INDICATION 1 & 2



Information On Above: ↓ Material:> Carbon Steel Surface Condition:> Sand Blasted

LINEAR INDICATIONS ON TOE OF WELDS.

Information On Above: ↓ Material:> Carbon Steel Surface Condition:> Sand Blasted

INDICATION 1 - 9CM LINEAR TOE INDICATION.
INDICATION 2 - 10CM LINEAR TOE INDICATION.



MT / PT INSPECTION REPORT

SLICK INSPECTION LTD.
2038-12th AVE NW
Medicine Hat, AB, T1C 2A7
PH: 403-527-9854
FAX: 403-527-9867
office@slickinspection.com

Technician Sign: 

Technician Certification:

JOHN MARTIN
CGSB Level II RT MT PT
SNT-TC-1A Level II RT MT PT
REG. #27301

Assistant:

Date: DEC. 4, 2025
Client:

RARE OILFIELD

Location:

RARE OILFIELD SHOP

Client Rep Signature:

Upon approval/acceptance by the Contractor the liability for the accuracy of final product becomes responsibility of the Contractor

Invoice #:

JM25433

Report #:

JM25433-M1

Page:

3 of 4

Acceptance Code:

ASME Sec.VIII, Div. 1 2023-UW 51

Specification:

MT-Rev.9

Procedure:

MT 2 - Wet Visible, Black On White

Technique:

Contractor:

RARE OILFIELD

A.F.E.#:

Code.#:

P.O.#:

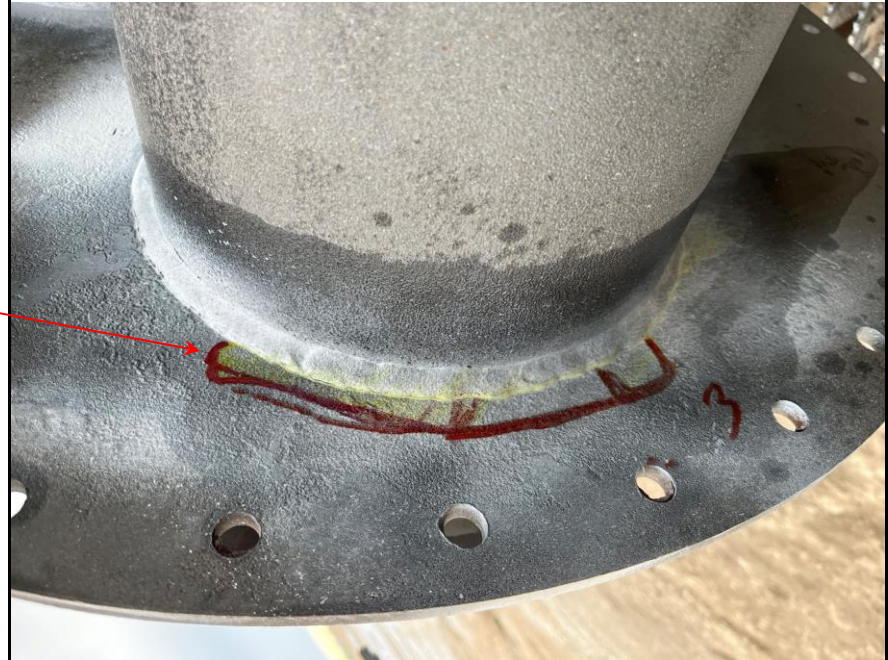
Project:

Job.#:

INNER FLANGE WELDS



INNER FLANGE WELD INDICATION 3



Information On Above: ↓ Material:> Carbon Steel Surface Condition:> Sand Blasted

ILINEAR INDICATION ON TOE OF WELD.

Information On Above: ↓ Material:> Carbon Steel Surface Condition:> Sand Blasted

INDICATION 3 - 18CM LINEAR TOE INDICATION



MT / PT INSPECTION REPORT

SLICK INSPECTION LTD.
2038-12th AVE NW
Medicine Hat, AB, T1C 2A7
PH: 403-527-9854
FAX: 403-527-9867
office@slickinspection.com

Technician Sign: 

Technician Certification:

JOHN MARTIN
CGSB Level II RT MT PT
SNT-TC-1A Level II RT MT PT
REG. #27301

Assistant:

Date: DEC. 4, 2025
Client:

RARE OILFIELD

Location:

RARE OILFIELD SHOP

Client Rep Signature:

Upon approval/acceptance by the Contractor the liability for the accuracy of final product becomes responsibility of the Contractor

Invoice #:

JM25433

Report #:

JM25433-M1

Page:

4 of 4

Acceptance Code:

ASME Sec.VIII, Div. 1 2023-UW 51

Specification:

MT-Rev.9

Procedure:

MT 2 - Wet Visible, Black On White

Technique:

Contractor:

RARE OILFIELD

A.F.E.#:

Code.#:

P.O.#:

Project:

Job.#:

TUBE RADIUS WELDS



Information On Above: ↓ Material:> Carbon Steel Surface Condition:> Sand Blasted

NO RELEVANT INDICATIONS AT TIME OF INSPECTION.

Information On Above: ↓ Material:> Surface Condition:>