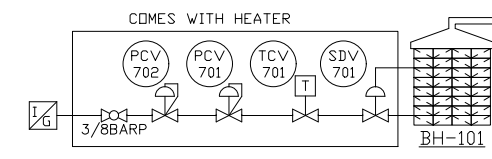
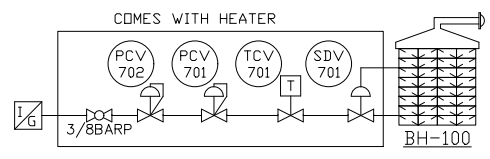
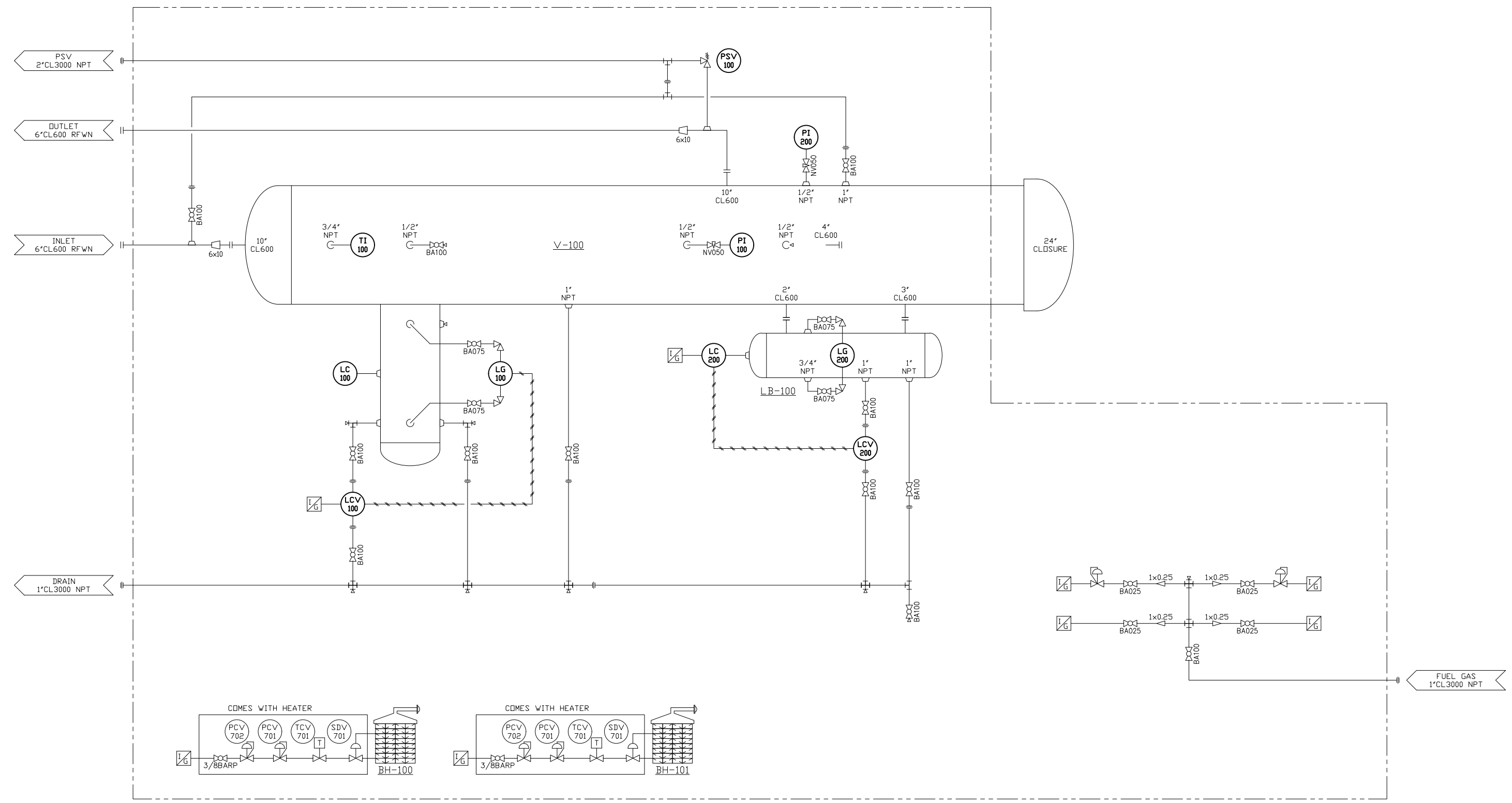


BILL OF MATERIALS		
TAG	QTY	DESCRIPTION
LCV-100/200	2	NDRRISEAL - LEVEL CONTROL VALVE, 2275, 1" NPT
LC-100/200	2	NDRRISEAL - LEVEL CONTROLLER, 1001A, 2" NPT
LG-100/200	2	QUALITY - SIGHT GLASS
PI-100	1	GAUGETECH - PRESS. GAUGE, 4" DIAL, 0-200# PSIG DUAL SCALE, SS CASE & TUBE
PI-200	1	GAUGETECH - PRESS. GAUGE, 2 1/2" DIAL, 0-100# PSIG DUAL SCALE, SS CASE & TUBE
TI-100	1	WESTERN GAUGE - TEMP GAUGE, 3", -40 TO 160 F DUAL SCALE C/W 1/2" x 3/4" x 6" 316SS TW
PSV-100	1	TAYLOR - PSV, SET @ 1440 PSI, 2"NPT x 2"NPT

V-100
VESSEL
24"OD x 14'-0" S/S
MAWP: 1440PSI
DT: 120°F
A#: 5533.3

LB-100
LIQUID BOOT
8 5/8"OD x 36" S/S
MAWP: 1440PSI
DT: 120°F
A#: 538144

BH-100/101
BUILDING HEATER
MAKE: CCI THERMAL
SIZE: 24"x24"
12VDC START c/w 30' START CABLE
PROTECTION GRILL, HOOD & VENT



0	31/03/2026	AS BUILT	DF	AV	AV
REV	DD/MM/YYYY	REVISION	BY	CHK	APP

CLIENT: -		24" FILTER SKID	
		- PIPING & INSTRUMENTATION	
PART#	DWG#	REV	
XXXX		0	