

HIGH LEVEL BILL OF MATERIALS				
ITEM NO.	DESCRIPTION	QTY.	DETAIL	WEIGHT (LBS)
1	STACK COURSE 1 ASSEMBLY	1	DRW-STR-002_PEDISTAL STACK ASSEMBLY	29495
2	STACK COURSE 2 ASSEMBLY	1	DRW-STR-002_PEDISTAL STACK ASSEMBLY	14926
3	STACK COURSE 3 ASSEMBLY	1	DRW-STR-002_PEDISTAL STACK ASSEMBLY	11723
4	STACK COURSE 4 ASSEMBLY	1	DRW-STR-003_TOP STACK ASSEMBLY	7185
5	STACK COURSE 5 ASSEMBLY	1	DRW-STR-003_TOP STACK ASSEMBLY	12710
6	STACK COURSE 6 ASSEMBLY	1	DRW-STR-003_TOP STACK ASSEMBLY	14465
7	STACK COURSE 7 ASSEMBLY	1	DRW-STR-003_TOP STACK ASSEMBLY	10972
8	1ST LADDER & PLATFORM ASSEMBLY- LEFT EXIT NO REPADS	1	DRW-STR-004_1ST LADDER-PLATFORM	2731
9	2ND LADDER & PLATFORM ASSEMBLY - RIGHT EXIT WITH REPADS	1	DRW-STR-005_2ND LADDER-PLATFORM - LEFT EXIT	2450
10	3RD LADDER & PLATFORM ASSEMBLY - LEFT EXIT WITH REPADS	1	DRW-STR-006_3RD LADDER-PLATFORM	2469
11	4TH LADDER & PLATFORM ASSEMBLY - RIGHT EXIT WITH REPADS	1	DRW-STR-007_4TH LADDER-PLATFORM - 4ft - 6ft OD	2224
12	5TH LADDER/ 360° WORK PLATFORM ASSEMBLY	1	DRW-STR-008_5TH TOP LADDER-PLATFORM	5398
13	1ST WASTE SPOOL	1	DRW-STR-010_WASTE & FUEL GAS PIPING SPOOLS	564
14	2ND WASTE SPOOL	1	DRW-STR-010_WASTE & FUEL GAS PIPING SPOOLS	586
15	3RD WASTE SPOOL	1	DRW-STR-010_WASTE & FUEL GAS PIPING SPOOLS	463
16	1ST FUEL SPOOL	1	DRW-STR-010_WASTE & FUEL GAS PIPING SPOOLS	280
17	2ND FUEL SPOOL	1	DRW-STR-010_WASTE & FUEL GAS PIPING SPOOLS	283
18	3RD FUEL SPOOL	1	DRW-STR-010_WASTE & FUEL GAS PIPING SPOOLS	224
19	U BOLT KIT_2" NPS	14	SHEET 1	N/A
20	U BOLT KIT_4" NPS	14	SHEET 1	N/A
21	VALVE_4" #150 RF FP CSC FULL SST_WCAPL410N LIMIT SWITCH_WC 140 SR 12 80psi	1	SHEET 1	N/A
22	FLAME ARRESTOR_4" #150 RF	1	SHEET 1	N/A
23	HAND WINCH & MOUNT	2	SHEET 1	N/A
24	WARNING LIGHT RETRACTABLE TRACKING	2	SHEET 1	N/A
25	WARNING LIGHTS MIDWAYS	2	SHEET 1	N/A
26	WARNING LIGHTS TOP BEACONS	2	SHEET 1	N/A
27	BOLT-UP KIT_2in_#150_B16.5_RF	3	SHEET 1	N/A
27.1	GASKET 2in SPIRAL WOUND_#150_B16.5_RF	1	SHEET 1	N/A
27.2	STUD_ø5/8" x 3 1/4" L_SA-193 B7M	4	SHEET 1	N/A
27.3	NUT 5/8-11	8	SHEET 1	N/A
28	BOLT-UP KIT_4in_#150_B16.5_RF	6	SHEET 1	N/A
28.1	GASKET 4in SPIRAL WOUND_#150_B16.5_RF	1	SHEET 1	N/A
28.2	STUD_ø5/8" x 3 1/2" L_SA-193 B7M	8	SHEET 1	N/A
28.3	NUT 5/8-11	16	SHEET 1	N/A
29	BOLT-UP KIT SECTION 1-2 PEDISTAL	1	SHEET 1	N/A
29.1	GASKET, 1/8"THK X 6'-8" OD X 6'-4 1/2" ID X 6'-4 1/2" BCD X QTY 48 - 1 3/8" HOLES	1	SHEET 1	N/A
29.2	NUT 1-1/4-7	96	SHEET 1	N/A
29.3	STUD_ø1 1/4" x 6 1/8" L_SA-193 B7M	48	SHEET 1	N/A
30	BOLT-UP KIT SECTION 2-3 PEDISTAL	1	SHEET 1	N/A
30.1	GASKET, 1/8"THK X 4'-8" OD X 4'-4 1/2" ID X 4'-4 1/2" BCD X QTY 32 - 1 3/8" HOLES	1	SHEET 1	N/A
30.2	NUT 1-1/4-7	64	SHEET 1	N/A
30.3	STUD_ø1 1/4" x 6 1/8" L_SA-193 B7M	32	SHEET 1	N/A
31	BOLT-UP KIT SECTION 3-4-5-6-7 PEDISTAL	4	SHEET 1	N/A
31.1	GASKET, 1/8"THK X 3'-8" OD X 3'-4 1/2" ID X 3'-4 1/2" BCD X QTY 24 - 1 3/8" HOLES	1	SHEET 1	N/A
31.2	NUT 1-1/4-7	48	SHEET 1	N/A
31.3	STUD_ø1 1/4" x 6 1/8" L_SA-193 B7M	24	SHEET 1	N/A

**MAIN ASSEMBLY WEIGHT
127816 LBS APPROX.**

GENERAL NOTES: A) UNLESS OTHERWISE SPECIFIED, DIMENSIONS ARE IN INCHES.
 B) TOLERANCES:
 DECIMAL FRACTION ANGULAR
 X = +/- .1 +/- .1/16 X = +/- .1°
 .XX = +/- .03 X = +/- .5°
 .XXX = +/- .010

C) ALL HOLES, SQUARES, SLOTS, CUTOUTS & EDGES TO BE BURR FREE.
 D) ALL WELDS TO BE APPROPRIATE FOR FINAL ASSEMBLY AND PAINT.
 E) SHEET TO BE PRINTED ON 11 x 17 PAPER ONLY

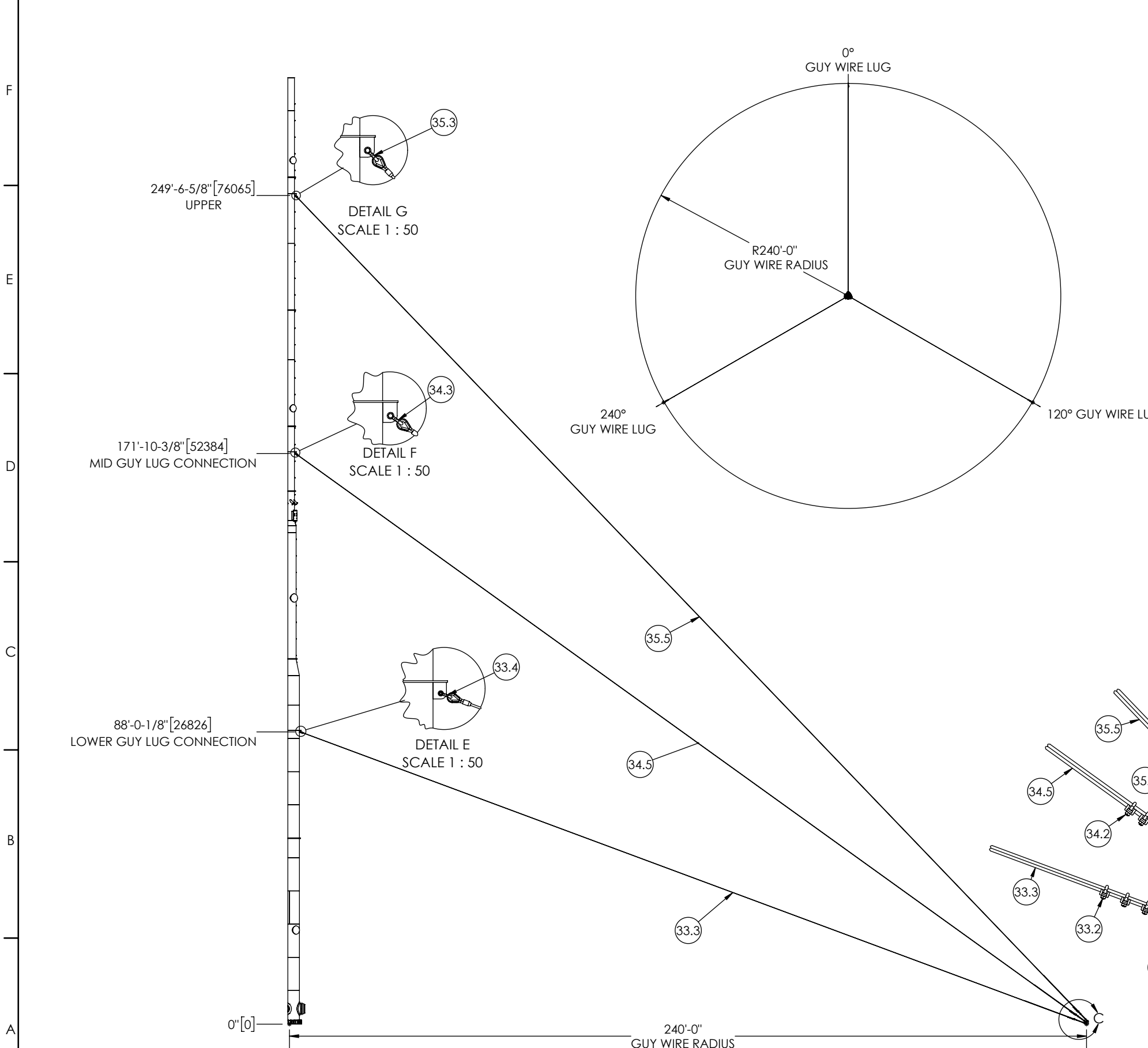
REV	DESCRIPTION	DATE	AUTHOR	SIGNATURE
A	ISSUED FOR INFORMATION	08APR2018	JEB	
B	ISSUED FOR APPROVAL	29MAY2018	JEB	
C	ISSUED FOR CONSTRUCTION	10JUN2018	JEB	
D	AS-BUILT	01JAN2019	JEB	

THE INFORMATION CONTAINED IN THIS DRAWING IS THE SOLE PROPERTY OF CDN CONTROLS. ANY REPRODUCTION IN PART OR AS A WHOLE WITHOUT THE WRITTEN PERMISSION OF CDN IS PROHIBITED.

CDN CONTROLS LTD

CUSTOMER: CRESCENT POINT
 WORK ORDER: 83821-CRE-COB

SCALE: 1:2000 DWG NO.: DRW-STR-001_GENERAL ARRANGEMENT REV NO.: D SHEET 1 of 3

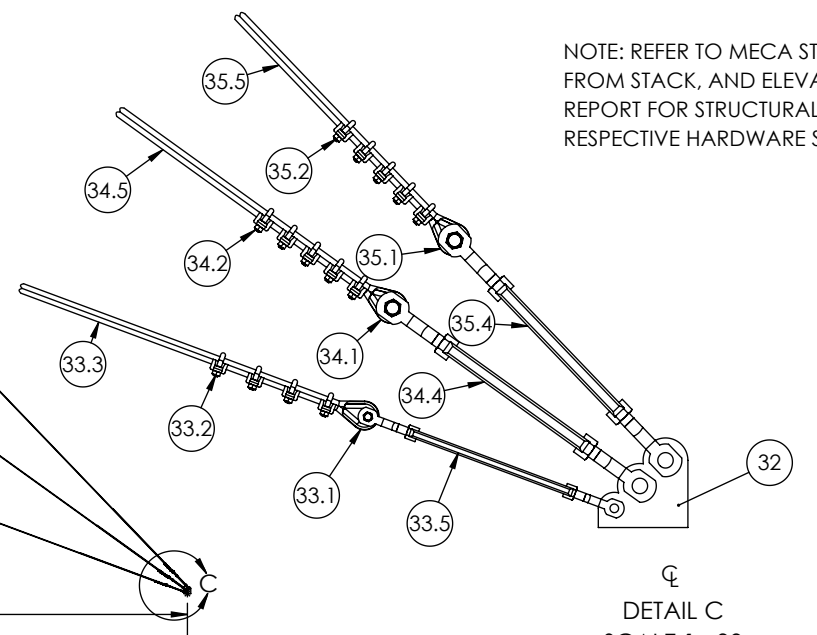


HIGH LEVEL BILL OF MATERIALS				
ITEM NO.	DESCRIPTION	QTY.	DETAIL	WEIGHT (LBS)
32	GUY WIRE ANCHOR ASSEMBLY (CLIENT)	3	SHEET 2	N/A
33	GUY WIRE ASSEMBLY_BOTTOM	3	SHEET 2	597
33.1	THIMBLE_0.8750in_G-414	1	SHEET 2	2
33.2	WIRE ROPE CLIPS_0.8750in_G-450	4	SHEET 2	3
33.3	EXIWRC CABLE 0.8750in C/W ONE FLEMISH END & THIMBLE	266'	SHEET 2	541
33.4	BOLT TYPE SHACKLE_1.0000in_G-2130	1	SHEET 2	6
33.5	TURNBUCKLE JAW & JAW_1.2500x24_HG-228	1	SHEET 2	35
34	GUY WIRE ASSEMBLY_MID	3	SHEET 2	964
34.1	THIMBLE_1.0000in_G-414	1	SHEET 2	3
34.2	WIRE ROPE CLIPS_1IN_G-450	5	SHEET 2	3
34.3	BOLT TYPE SHACKLE_1.2500in_G-2130	1	SHEET 2	12
34.4	TURNBUCKLE JAW & JAW_2.0000x24_HG-228	1	SHEET 2	115
34.5	EXIWRC CABLE 1" X 306' LONG C/W ONE FLEMISH END & THIMBLE	306'	SHEET 2	813
35	GUY WIRE ASSEMBLY_UPPER	3	SHEET 2	1100
35.1	THIMBLE_1.0000in_G-414	1	SHEET 2	3
35.2	WIRE ROPE CLIPS_1IN_G-450	5	SHEET 2	3
35.3	BOLT TYPE SHACKLE_1.2500in_G-2130	1	SHEET 2	12
35.4	TURNBUCKLE JAW & JAW_2.0000x24_HG-228	1	SHEET 2	115
35.5	EXIWRC CABLE 1" X 357' LONG C/W ONE FLEMISH END & THIMBLE	357'	SHEET 2	950

GUY DEADMAN ANCHOR FOUNDATION LOADS		
MAX HORIZ. SHEAR LOAD	49.47 K-FT (UNFACTORED)	69.26 K-FT (FACTORED)
MAX. VERT. UPLIFT LOAD	37.35 K-FT (UNFACTORED)	52.29 K-FT (FACTORED)

GUY WIRE ASSEMBLY		
32	GUY WIRE ANCHOR ASSEMBLY (CLIENT)	3
33	GUY WIRE ASSEMBLY_BOTTOM	3
34	GUY WIRE ASSEMBLY_MID	3
35	GUY WIRE ASSEMBLY_UPPER	3

NOTE: REFER TO MECA STRUCTURAL REPORTS FOR DISTANCE OF DEADMAN ANCHORS FROM STACK, AND ELEVATION WITH RESPECT TO STACK BASE. ALSO REFER TO MECA REPORT FOR STRUCTURAL FLANGE BOLT PRETENSION REQUIREMENTS, GUY WIRES AND RESPECTIVE HARDWARE SPECIFICATIONS



GENERAL NOTES: A) UNLESS OTHERWISE SPECIFIED, DIMENSIONS ARE IN INCHES.
 B) TOLERANCES:
 DECIMAL FRACTION ANGULAR
 .X = +/- .1 +/- .1/16 X = +/- .1°
 .XX = +/- .03 .XXX = +/- .010
 C) ALL HOLES, SQUARES, SLOTS, CUTOUTS & EDGES TO BE BURR FREE.
 D) ALL WELDS TO BE APPROPRIATE FOR FINAL ASSEMBLY AND PAINT.
 E) SHEET TO BE PRINTED ON 11 x 17 PAPER ONLY

REV	DESCRIPTION	DATE	AUTHOR	SIGNATURE
A	ISSUED FOR INFORMATION	08APR2018	JEB	
B	ISSUED FOR APPROVAL	29MAY2018	JEB	
C	ISSUED FOR CONSTRUCTION	10JUN2018	JEB	
D	AS-BUILT	01JAN2019	JEB	

THE INFORMATION CONTAINED IN THIS DRAWING IS THE SOLE PROPERTY OF CDN CONTROLS. ANY REPRODUCTION IN PART OR AS A WHOLE WITHOUT THE WRITTEN PERMISSION OF CDN IS PROHIBITED.

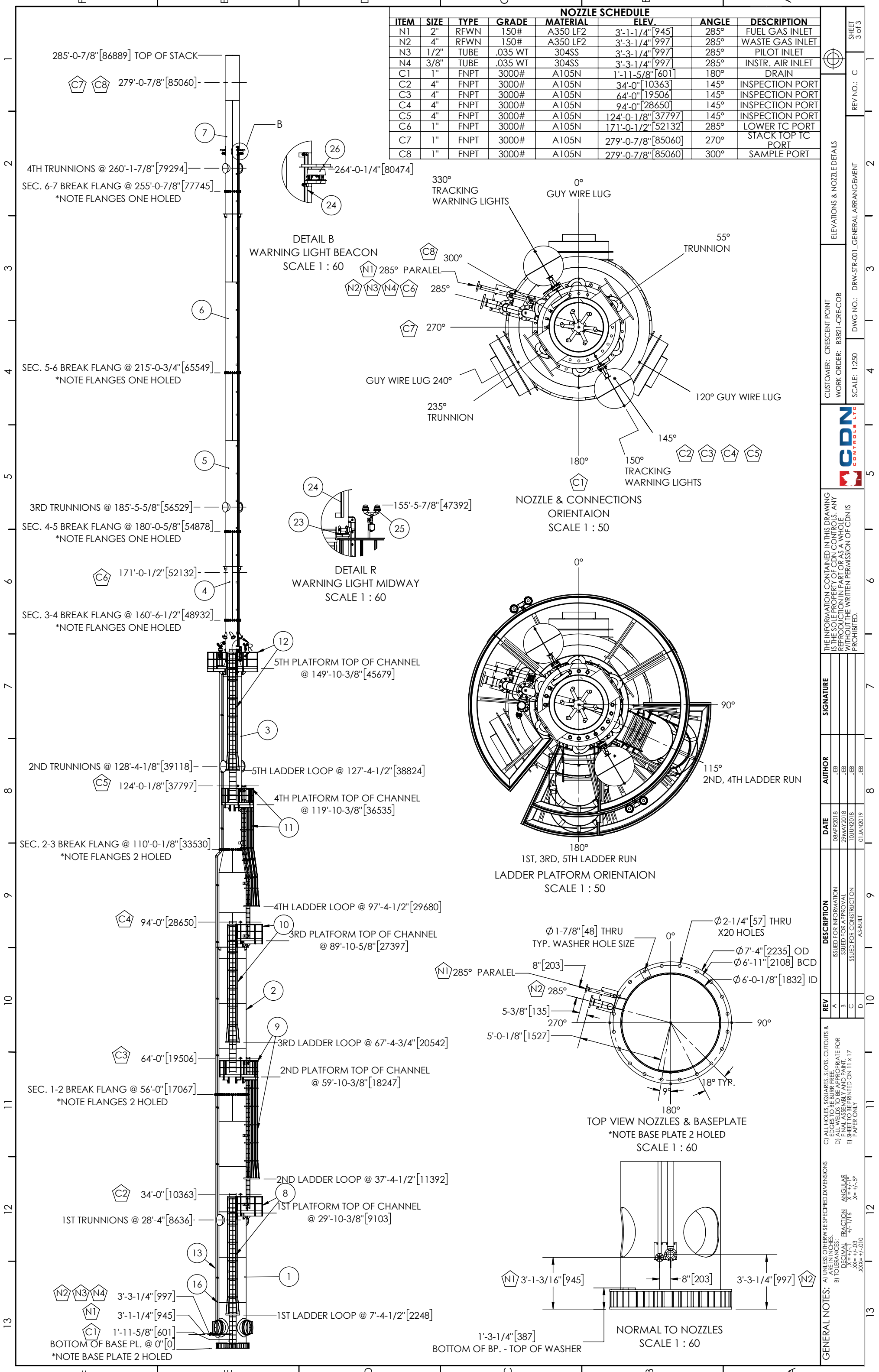
CDN CONTROLS LTD

CUSTOMER: CRESCENT POINT
 WORK ORDER: B3821-CRE-COB

GUY WIRE LAYOUT

SCALE: 1:2000 DWG NO.: DRW-STR-001_GENERAL ARRANGEMENT REV NO.: D SHEET 2 of 3

NOZZLE SCHEDULE							
ITEM	SIZE	TYPE	GRADE	MATERIAL	ELEV.	ANGLE	DESCRIPTION
N1	2"	RFWN	150#	A350 LF2	3'-1-1/4"[945]	285°	FUEL GAS INLET
N2	4"	RFWN	150#	A350 LF2	3'-3-1/4"[997]	285°	WASTE GAS INLET
N3	1/2"	TUBE	.035 WT	304SS	3'-3-1/4"[997]	285°	PILOT INLET
N4	3/8"	TUBE	.035 WT	304SS	3'-3-1/4"[997]	285°	INSTR. AIR INLET
C1	1"	FNPT	3000#	A105N	1'-11-5/8"[601]	180°	DRAIN
C2	4"	FNPT	3000#	A105N	34'-0"[10363]	145°	INSPECTION PORT
C3	4"	FNPT	3000#	A105N	64'-0"[19506]	145°	INSPECTION PORT
C4	4"	FNPT	3000#	A105N	94'-0"[28650]	145°	INSPECTION PORT
C5	4"	FNPT	3000#	A105N	124'-0-1/8"[37797]	145°	INSPECTION PORT
C6	1"	FNPT	3000#	A105N	171'-0-1/2"[52132]	285°	LOWER TC PORT
C7	1"	FNPT	3000#	A105N	279'-0-7/8"[85060]	270°	STACK TOP TC PORT
C8	1"	FNPT	3000#	A105N	279'-0-7/8"[85060]	300°	SAMPLE PORT



SHEET 3 of 3

REV NO: C

DWG NO.: DRW-STR-001-GENERAL ARRANGEMENT

ELEVATIONS & NOZZLE DETAILS

CUSTOMER: CRESCENT POINT
WORK ORDER: B3821-CRE-COB

SCALE: 1:250

CDN
CONTROLS LTD

THE INFORMATION CONTAINED IN THIS DRAWING IS THE SOLE PROPERTY OF CDN CONTROLS. ANY REPRODUCTION IN PART OR AS A WHOLE WITHOUT THE WRITTEN PERMISSION OF CDN IS PROHIBITED.

REV	DESCRIPTION	DATE	AUTHOR	SIGNATURE
A	ISSUED FOR INFORMATION	08APR2018	JEB	
B	ISSUED FOR APPROVAL	29MAY2018	JEB	
C	ISSUED FOR CONSTRUCTION	10JUN2018	JEB	
D	AS-BUILT	01JAN2019	JEB	

GENERAL NOTES: A) UNLESS OTHERWISE SPECIFIED, DIMENSIONS ARE IN INCHES.
B) TOLERANCES:
DECIMAL X = +/- .03
FRACTION X = +/- .03
XX = +/- .010
XXX = +/- .010

C) ALL HOLES, SQUARES, SLOTS, CUTOUTS & FLO WELDS TO BE APPROPRIATE FOR FINAL ASSEMBLY AND PAINT.
D) SHEET TO BE PRINTED ON 11 x 17 PAPER ONLY