

ITEM NO.	QTY.	DESCRIPTION
1	1	1ST WASTE SPOOL
2	1	2ND WASTE SPOOL
3	1	3RD WASTE SPOOL

ITEM NO.	QTY.	DESCRIPTION
10	1	1ST FUEL SPOOL
11	1	2ND FUEL SPOOL
12	1	3RD FUEL SPOOL

NOTES	
1	5% XRAY ON ALL PIPE WELDS REQUIRED
2	STRAIGHTNESS TOLERANCE OF 2" PER 100ft OF ASSEMBLED PIPE
3	100% VISUAL INSPECTION
4	DIMENSIONAL CHECK REQUIRED PRIOR TO SHIPMENT
5	ALL 2" PIPE WELDS SHALL BE 3/16" DOUBLE BEVEL (75°) WELDS WITH A FULL ROOT PASS PLUS A CAP
6	ALL 4" PIPE WELDS SHALL BE 1/4" DOUBLE BEVEL (75°) WELDS WITH A FULL ROOT PASS PLUS A CAP

GENERAL NOTES: A) UNLESS OTHERWISE SPECIFIED, DIMENSIONS ARE IN INCHES.
 B) TOLERANCES:
 DECIMAL FRACTION ANGULAR
 .X = +/- .1 +/- 1/16 X = +/- 1°
 .XX = +/- .03 .XXX = +/- .010 .X = +/- .5°
 C) ALL HOLES, SQUARES, SLOTS, CUTOUTS & EDGES TO BE BURR FREE.
 D) ALL WELDS TO BE APPROPRIATE FOR FINAL ASSEMBLY AND PAINT.
 E) SHEET TO BE PRINTED ON 11 x 17 PAPER ONLY

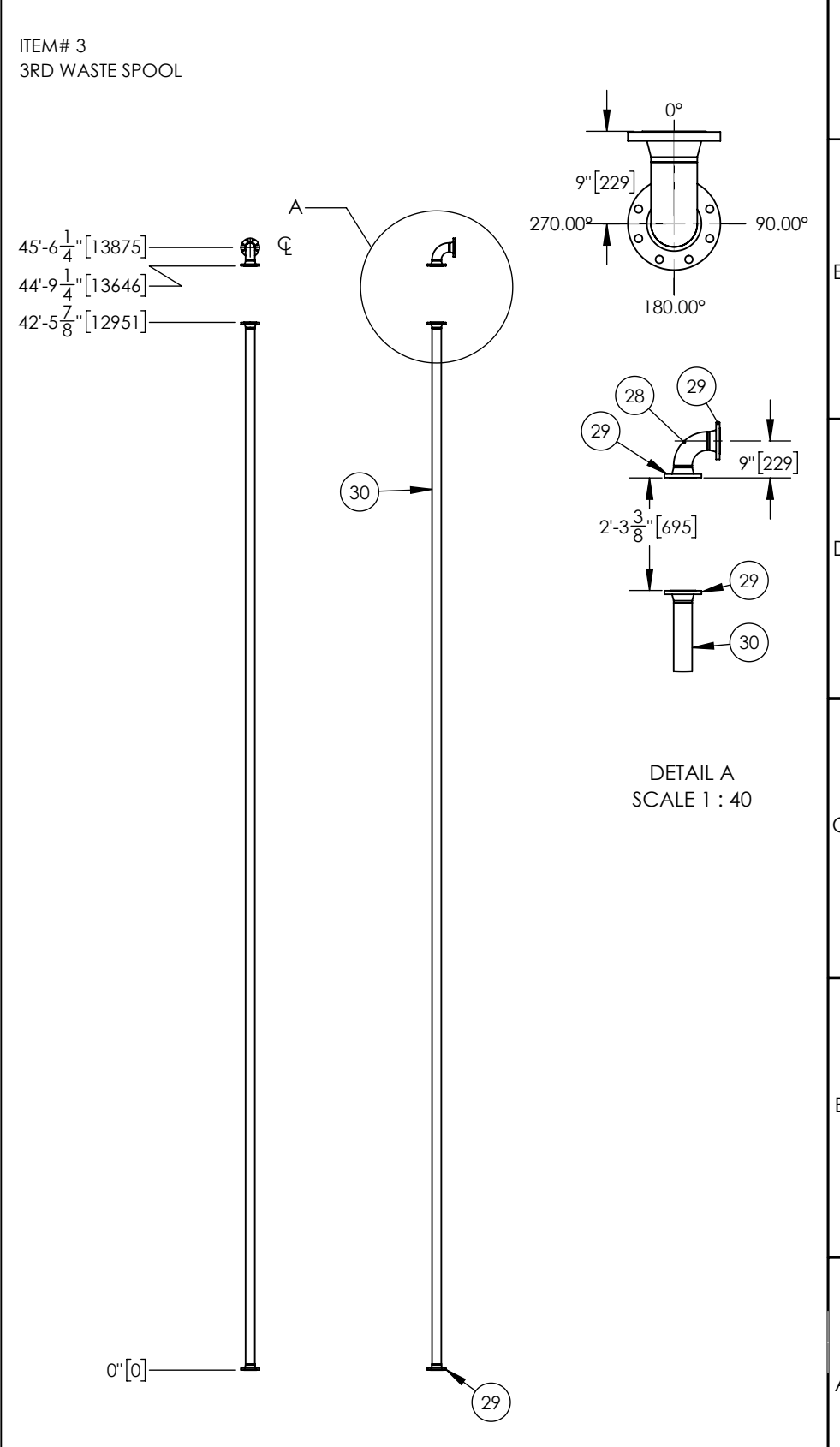
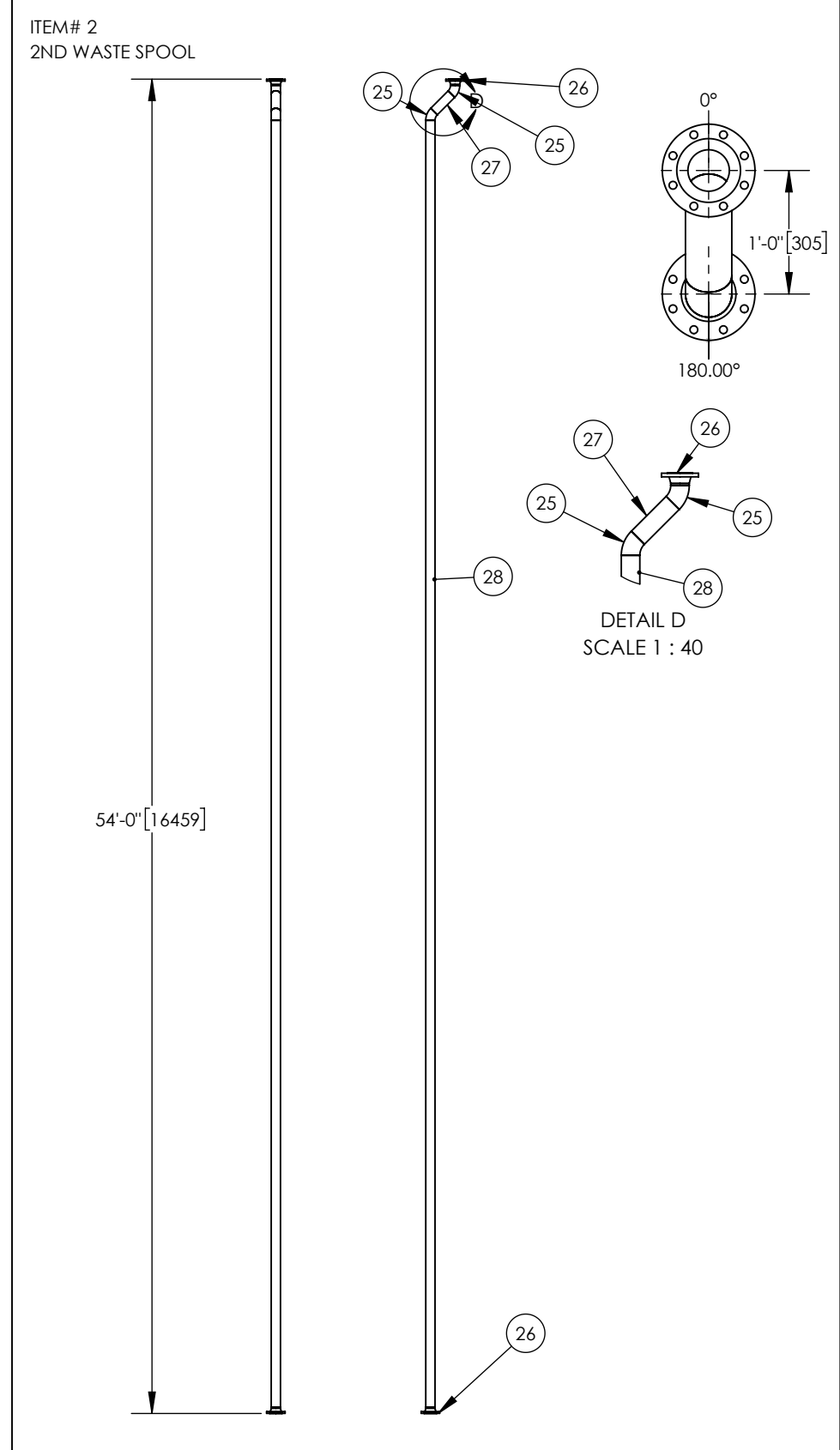
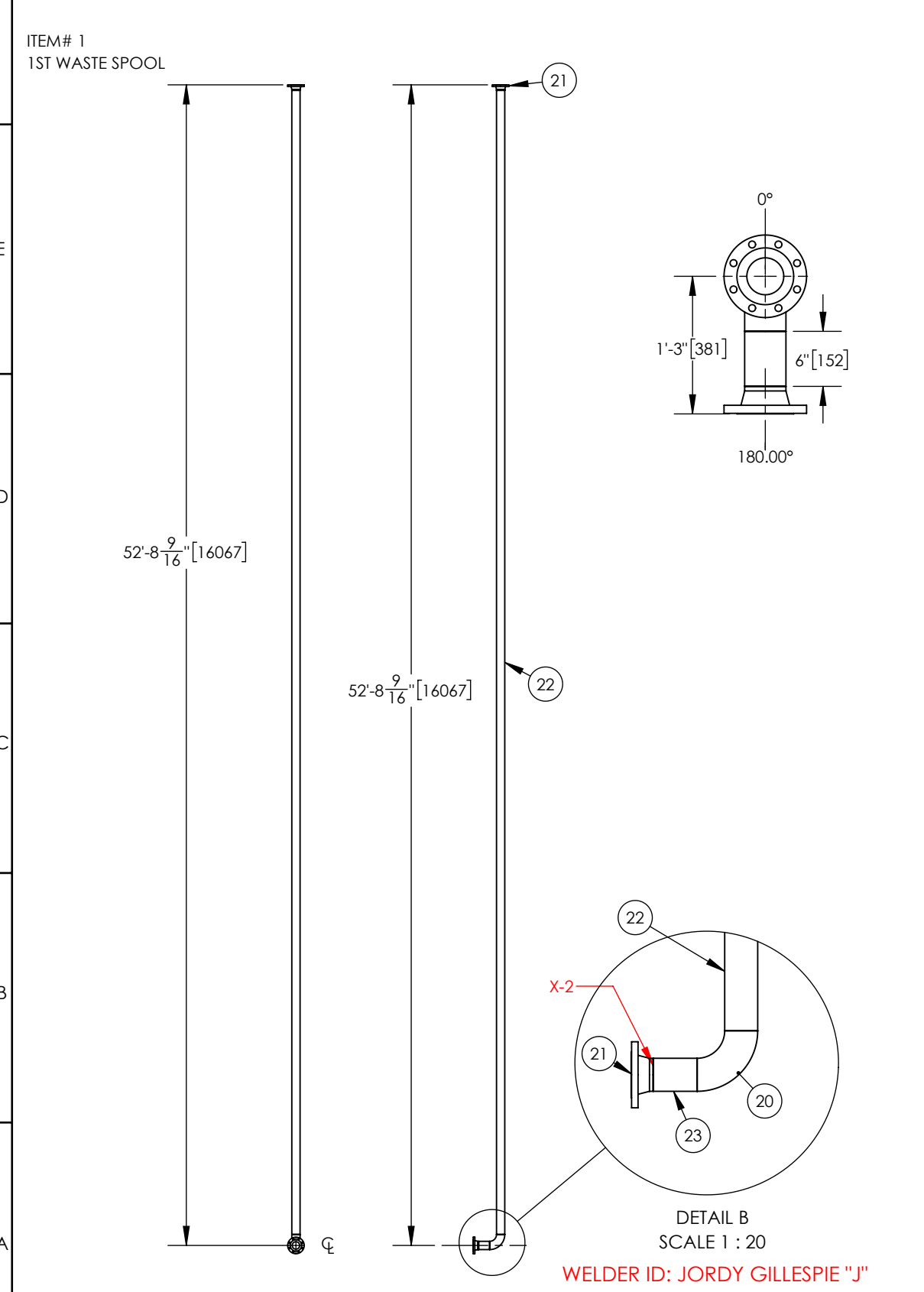
REV	DESCRIPTION	DATE	AUTHOR	SIGNATURE
A	ISSUED FOR INFORMATION	08APR2018	JEB	
B	ISSUED FOR APPROVAL	29MAY2018	JEB	
C	ISSUED FOR CONSTRUCTION	10JUN2018	JEB	
D	AS-BUILT	01JAN2019	JEB	

THE INFORMATION CONTAINED IN THIS DRAWING IS THE SOLE PROPERTY OF CDN CONTROLS. ANY REPRODUCTION IN PART OR AS A WHOLE WITHOUT THE WRITTEN PERMISSION OF CDN IS PROHIBITED.



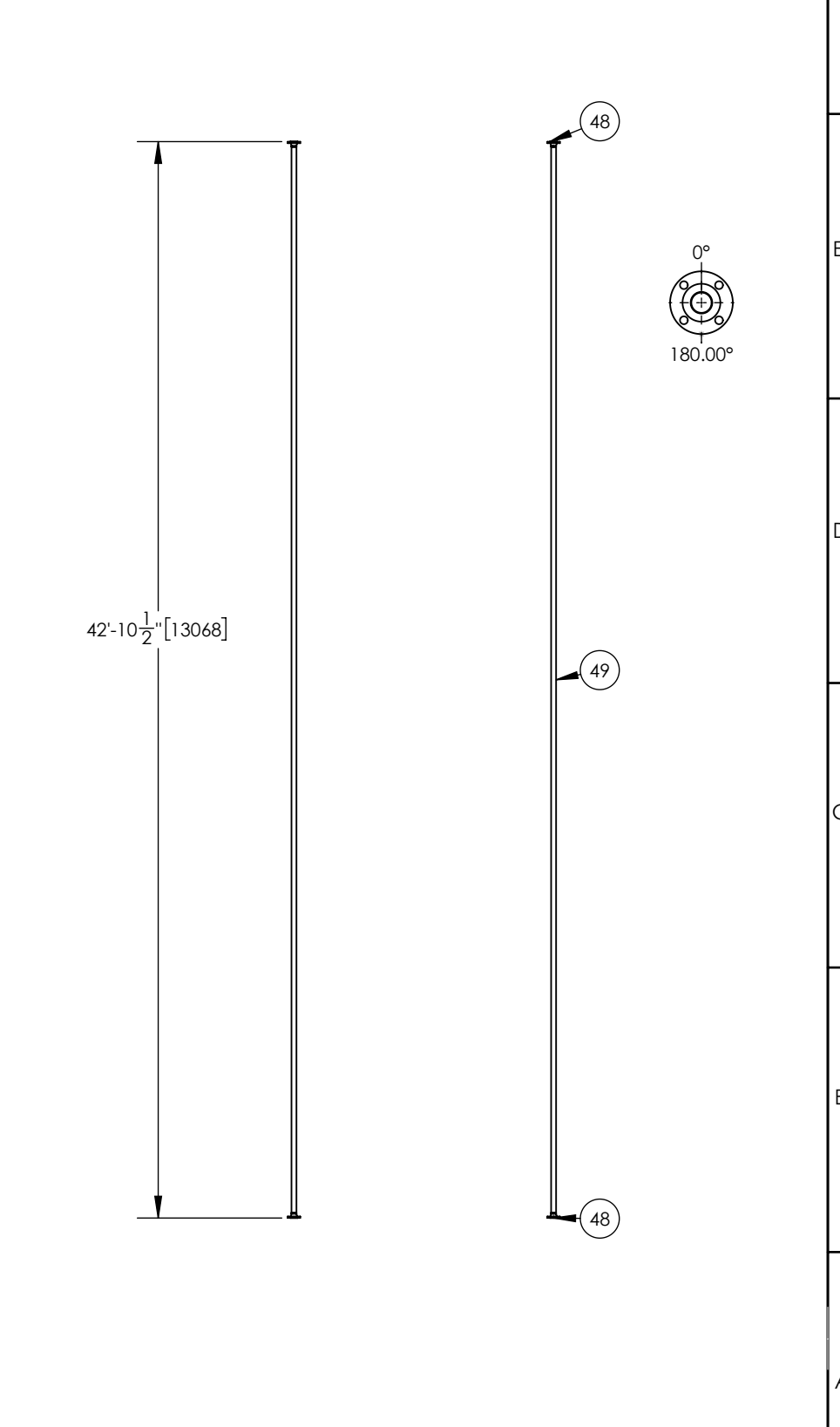
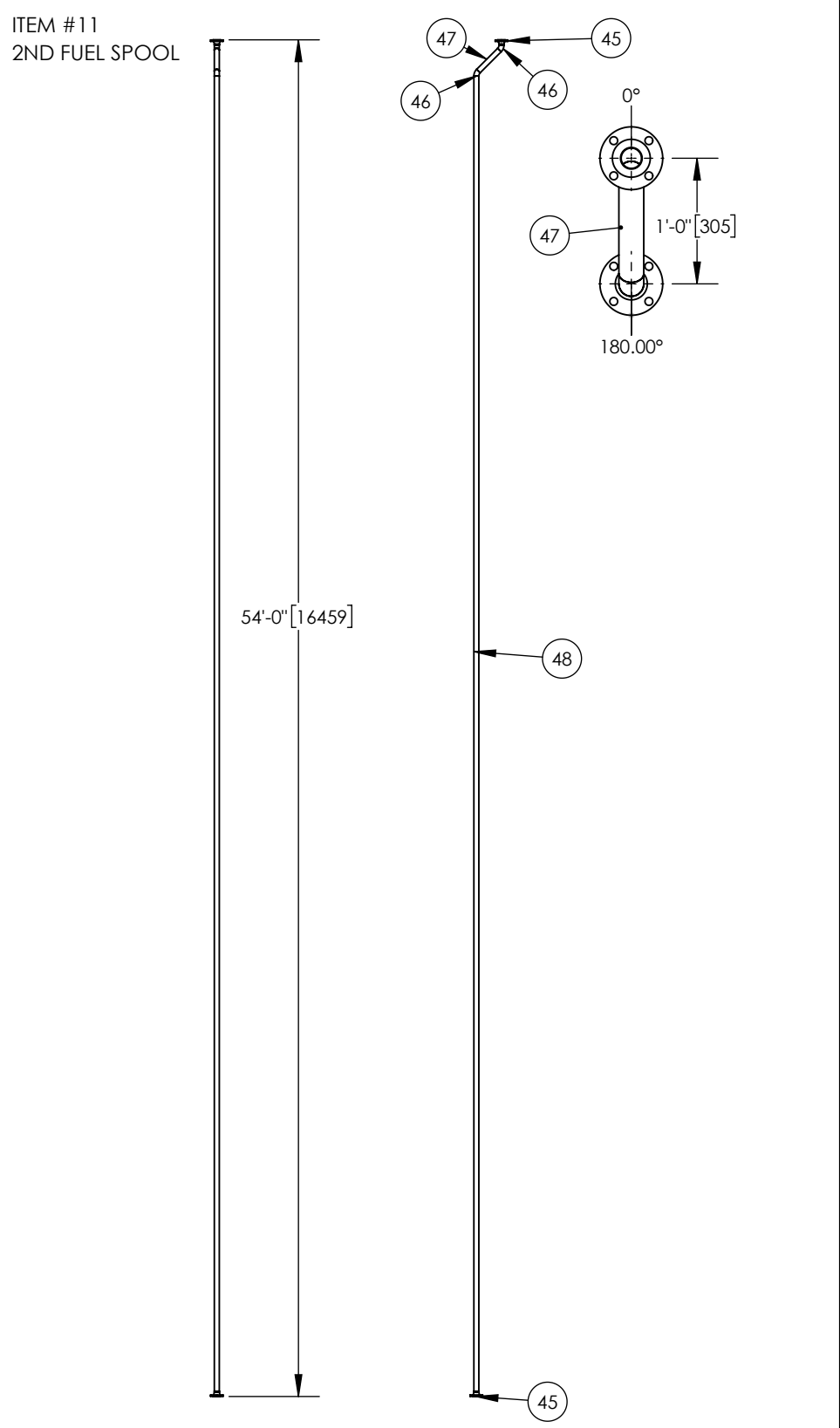
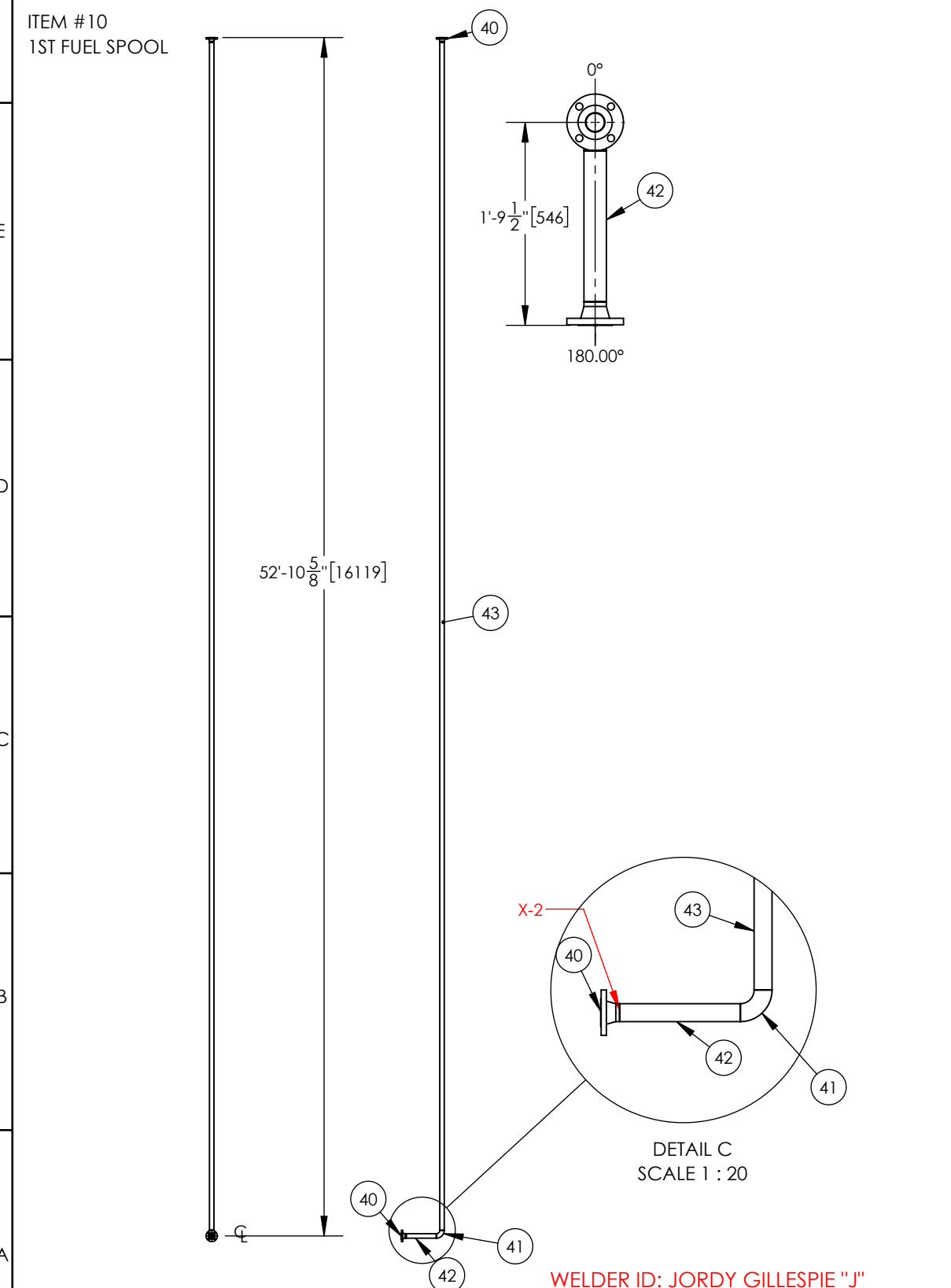
CUSTOMER: CRESCENT POINT	WASTE/ FUEL PIPING GA	
WORK ORDER: B3821-CRE-COB		
SCALE: 1:210	DWG NO.: DRW-STR-010_WASTE & FUEL GAS PIPING SPOOLS	REV NO.: D
		SHEET 1 of 3

13		12		11		10		9		8		7		6		5		4		3		2		1	
ITEM NO.	QTY.	DESCRIPTION	LENGTH	MATERIAL	HEAT NUMBER	ITEM NO.	QTY.	DESCRIPTION	LENGTH	MATERIAL	HEAT NUMBER	ITEM NO.	QTY.	DESCRIPTION	LENGTH	MATERIAL	HEAT NUMBER	ITEM NO.	QTY.	DESCRIPTION	LENGTH	MATERIAL	HEAT NUMBER		
20	1	90 LR ELBOW 4IN SCH 40	N/A	A333 GR.6	17D6209	25	2	45 LR ELBOW 4 SCH 40	N/A	A350 LF2	60P01044	28	1	90 LR ELBOW 4IN SCH 40	N/A	A333 GR.6	17D6209	29	4	FLANGE 4" RFWN 150#	N/A	SA-305 LF2	635641		
21	2	FLANGE 4" RFWN 150#	N/A	SA-305 LF2	635641	26	2	FLANGE 4" RFWN 150#	N/A	SA-305 LF2	635641	27	1	PIPE 4" SCH 40	1'	A333 GR.6	4708547	30	1	PIPE 4" SCH 40	41'-11 7/8"	A333 GR.6	4708547		
22	1	PIPE 4" SCH40	51'-11 9/16"	A333 GR.6	4708547	28	1	PIPE 4" SCH 40	52'-1"	A333 GR.6	4708547														
23	1	PIPE 4" SCH40	6"	A333 GR.6	4708547																				



GENERAL NOTES: A) UNLESS OTHERWISE SPECIFIED, DIMENSIONS ARE IN INCHES. B) TOLERANCES: DECIMAL FRACTION ANGULAR X = +/- .1 +/- .1/16 X = +/- .1° X = +/- .5° .XX = +/- .03 .XXX = +/- .010 C) ALL HOLES, SQUARES, SLOTS, CUTOUTS & EDGES TO BE BURR FREE. D) ALL WELDS TO BE APPROPRIATE FOR FINAL ASSEMBLY AND PAINT. E) SHEET TO BE PRINTED ON 11 x 17 PAPER ONLY				REV	DESCRIPTION	DATE	AUTHOR	SIGNATURE	THE INFORMATION CONTAINED IN THIS DRAWING IS THE SOLE PROPERTY OF CDN CONTROLS. ANY REPRODUCTION IN PART OR AS A WHOLE WITHOUT THE WRITTEN PERMISSION OF CDN IS PROHIBITED.	CUSTOMER: CRESCENT POINT	WASTE SPOOL DETAILS	
A	ISSUED FOR INFORMATION	08APR2018	JEB		SCALE: 1:80	DWG NO.: DRW-STR-010_WASTE & FUEL GAS PIPING SPOOLS	REV NO.: D	SHEET 2 of 3				
B	ISSUED FOR APPROVAL	29MAY2018	JEB									
C	ISSUED FOR CONSTRUCTION	10JUN2018	JEB									
D	AS-BUILT	01JAN2019	JEB									

ITEM NO.	QTY.	DESCRIPTION	LENGTH	MATERIAL	HEAT NUMBER	ITEM NO.	QTY.	DESCRIPTION	LENGTH	MATERIAL	HEAT NUMBER	ITEM NO.	QTY.	DESCRIPTION	LENGTH	MATERIAL	HEAT NUMBER
40	2	FLANGE 2" RFWN 150#	N/A	SA-305 LF2	721423	45	2	FLANGE 2" RFWN 150#	N/A	SA-305 LF2	721423	48	2	FLANGE 2" RFWN 150#	N/A	SA-305 LF2	721423
41	1	2" WELDED LONG RADIUS SCH80 90° ELBOW		A333 GR.6	17E3221	46	2	45 LR ELBOW 2 Sch 80	N/A	A350 LF2	15D1052	49	1	PIPE 2" SCH80	42'-5 1/2"	A333 GR.6	608008
42	1	PIPE 2" SCH80	1'-4"	A333 GR.6	608008	47	1	PIPE XS 2 SCH 80	1'-2 3/16"	A333 Gr.6	608008	ITEM #12 3RD FUEL SPOOL					
43	1	PIPE 2" SCH80	52'-5 1/8"	A333 GR.6	608008	48	1	PIPE XS 2 SCH 80	52'-4 1/4"	A333 Gr.6	608008						



GENERAL NOTES: A) UNLESS OTHERWISE SPECIFIED, DIMENSIONS ARE IN INCHES. B) TOLERANCES: DECIMAL FRACTION ANGULAR .X = +/- .1 +/- 1/16 X = +/- 1° .XX = +/- .03 +/- 1/16 X = +/- .5° .XXX = +/- .010					C) ALL HOLES, SQUARES, SLOTS, CUTOUTS & EDGES TO BE BURR FREE. D) ALL WELDS TO BE APPROPRIATE FOR FINAL ASSEMBLY AND PAINT. E) SHEET TO BE PRINTED ON 11 x 17 PAPER ONLY					REVISIONS: <table border="1"> <thead> <tr> <th>REV</th> <th>DESCRIPTION</th> <th>DATE</th> <th>AUTHOR</th> <th>SIGNATURE</th> </tr> </thead> <tbody> <tr> <td>A</td> <td>ISSUED FOR INFORMATION</td> <td>08APR2018</td> <td>JEB</td> <td></td> </tr> <tr> <td>B</td> <td>ISSUED FOR APPROVAL</td> <td>29MAY2018</td> <td>JEB</td> <td></td> </tr> <tr> <td>C</td> <td>ISSUED FOR CONSTRUCTION</td> <td>10JUN2018</td> <td>JEB</td> <td></td> </tr> <tr> <td>D</td> <td>AS-BUILT</td> <td>01JAN2019</td> <td>JEB</td> <td></td> </tr> </tbody> </table>					REV	DESCRIPTION	DATE	AUTHOR	SIGNATURE	A	ISSUED FOR INFORMATION	08APR2018	JEB		B	ISSUED FOR APPROVAL	29MAY2018	JEB		C	ISSUED FOR CONSTRUCTION	10JUN2018	JEB		D	AS-BUILT	01JAN2019	JEB		THE INFORMATION CONTAINED IN THIS DRAWING IS THE SOLE PROPERTY OF CDN CONTROLS. ANY REPRODUCTION IN PART OR AS A WHOLE WITHOUT THE WRITTEN PERMISSION OF CDN IS PROHIBITED.					CUSTOMER: CRESCENT POINT WORK ORDER: B3821-CRE-COB SCALE: 1:80 DWG NO.: DRW-STR-010_WASTE & FUEL GAS PIPING SPOOLS REV NO.: D SHEET 3 of 3				
REV	DESCRIPTION	DATE	AUTHOR	SIGNATURE																																													
A	ISSUED FOR INFORMATION	08APR2018	JEB																																														
B	ISSUED FOR APPROVAL	29MAY2018	JEB																																														
C	ISSUED FOR CONSTRUCTION	10JUN2018	JEB																																														
D	AS-BUILT	01JAN2019	JEB																																														