



## ULTRASONIC THICKNESS INSPECTION REPORT

**Invoice #:****SG25264**

Report #:

**SG25264UT-2**

Page:

**1 of 3**

Acceptance Code:

Client Information

Specification:

Integrity Survey

Procedure:

UT-1 Rev.2

Technique:

UT - Thickness

Contractor:

A.F.E.#:

Code.#:

P.O.#:

Project:

Job.#:

Technician Sign:

Date:

OCT 27 ,2025

Client:

**RARE OILFIELD**

Location:

**RARE OILFIELD SHOP  
REDCLIFF AB**

Client Rep Signature:

Technician Certification:

**SCOTT GRANT**CGSB Level II RT MT PT XF  
SNT-TC-1A Level II RT MT PT  
REG. #23376

Assistant:

### COVER PAGE

#### Location:



#### Overview:



#### Name Plate:



### UT THICKNESS SURVEY ON VESSEL A440511

#### Equipment, Calibrations & Consumables Used

|                             |  |  |                                       |   |                               |  |   |
|-----------------------------|--|--|---------------------------------------|---|-------------------------------|--|---|
| <b>Instrument Make:</b>     | AlphaGage+, Ser: 000128                                | <b>Range Of Verification:</b><br>0.1" - 0.5" | <b>Calibrated On:</b><br>OCT 27 ,2025 | <b>Cable Length:</b><br>3 Feet          | <b>Cable Type:</b><br>Coaxial | <b>Test Method:</b><br>Thickness><br>Lamination> | <b>Couplant:</b><br>Sonotech<br>Soundsafe |
| <b>Transducer Settings:</b> | Sonatest Probe   | <b>Model:</b><br>DK525                       | <b>Calibrated On:</b><br>OCT 27 ,2025 | <b>Angle:</b><br>0°                     | <b>Frequency:</b><br>5 MHz    | <b>Size:</b><br>5 / .25"                         | <b>Reference &amp; Scan</b><br>/          |
| <b>Calibration Block:</b>   | IIW Type 1 Reference Block<br>1018 Steel Heat #C203714 | <b>Block Serial #:</b><br>S/N 3142 24        | <b>Calibrated On:</b><br>OCT 27 ,2025 | <b>Reference Reflector:</b><br>Backwall | <b>Reference %FSH</b><br>100% | <b>Range Setting</b><br>1.0 Inches               |   |



## ULTRASONIC THICKNESS INSPECTION REPORT

Invoice #:

**SG25264**

Report #:

**SG25264UT-2**

Page:

2 of 3

Acceptance Code:

Client Information

Specification:

Integrity Survey

Procedure:

UT-1 Rev.2

Technique:

UT - Thickness

Contractor:

AFE:

Code:

P.O.#:

Project:

Job#:

SLICK INSPECTION LTD.  
2038-12th AVE NW  
Medicine Hat, AB, T1C 2A7  
PH: 403-527-9854  
FAX: 403-527-9867  
www.slickinspection.com

Technician Sign:

Date:

OCT 27 ,2025

Client:

**RARE OILFIELD**

Technician Certification:

**SCOTT GRANT**  
CGSB Level II RT MT PT XF  
SNT-TC-1A Level II RT MT PT  
REG. #23376

Location:

**RARE OILFIELD SHOP  
REDCLIFF AB**

Client Rep Signature:

Assistant:

Upon approval/acceptance by the Contractor the liability for the accuracy of final product becomes responsibility of the Contractor

| Area Surface Readings: ↓ |                |                | Nominal Wall Thickness:> 2.875" |                |                | Average Thickness Reading:> 2.973 |                |                | Area Surface Readings: ↓ |                |                | Nominal Wall Thickness:> 3.000" |                |                | Average Thickness Reading:> 3.039 |                |                |
|--------------------------|----------------|----------------|---------------------------------|----------------|----------------|-----------------------------------|----------------|----------------|--------------------------|----------------|----------------|---------------------------------|----------------|----------------|-----------------------------------|----------------|----------------|
| Location #:              | Thickness Min: | Thickness Max: | Location #:                     | Thickness Min: | Thickness Max: | Location #:                       | Thickness Min: | Thickness Max: | Location #:              | Thickness Min: | Thickness Max: | Location #:                     | Thickness Min: | Thickness Max: | Location #:                       | Thickness Min: | Thickness Max: |
| CML-1                    | 2.908          | 3.024          | CML-6                           |                |                | CML-1                             | 3.042          | 3.092          | CML-6                    |                |                | CML-6                           |                |                |                                   |                |                |
| CML-2                    | 2.905          | 3.055          | CML-7                           |                |                | CML-2                             | 3.047          | 3.051          | CML-7                    |                |                | CML-7                           |                |                |                                   |                |                |
| CML-3                    |                |                | CML-8                           |                |                | CML-3                             | 3.048          | 3.075          | CML-8                    |                |                | CML-8                           |                |                |                                   |                |                |
| CML-4                    |                |                | CML-9                           |                |                | CML-4                             | 2.973          | 2.983          | CML-9                    |                |                | CML-9                           |                |                |                                   |                |                |
| CML-5                    |                |                | CML-10                          |                |                | CML-5                             |                |                | CML-10                   |                |                | CML-10                          |                |                |                                   |                |                |



Information On Above: ↓ Material:> Carbon Steel Surface Condition:> Painted / Coated

HEADS FOR VESSEL A440511

Information On Above: ↓ Material:> Carbon Steel Surface Condition:> Painted / Coated

SHELL FOR VESSEL A440511



## ULTRASONIC THICKNESS INSPECTION REPORT

SLICK INSPECTION LTD.  
2038-12th AVE NW  
Medicine Hat, AB, T1C 2A7  
PH: 403-527-9854  
FAX: 403-527-9867  
www.slickinspection.com

Technician Sign:

Technician Certification:

**SCOTT GRANT**  
CGSB Level II RT MT PT XF  
SNT-TC-1A Level II RT MT PT  
REG. #23376

Assistant:

Date:

OCT 27 ,2025

Client:

**RARE OILFIELD**

Location:

**RARE OILFIELD SHOP  
REDCLIFF AB**

Client Rep Signature:

Invoice #:

**SG25264**

Report #:

**SG25264UT-2**

Page:

3 of 3

Acceptance Code:

Client Information

Specification:

Integrity Survey

Procedure:

UT-1 Rev.2

Technique:

UT - Thickness

Contractor:

AFE:

Code:

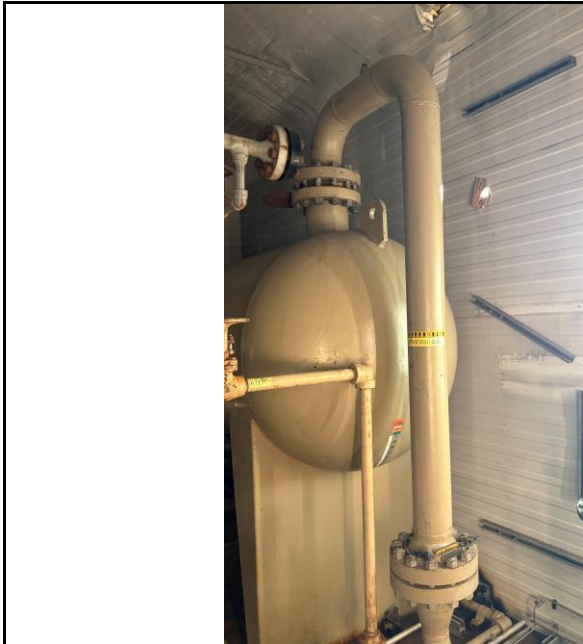
P.O.#:

Project:

Job#:

Upon approval/acceptance by the Contractor the liability for the accuracy of final product becomes responsibility of the Contractor

| Area Surface Readings: ↓ |                |                | Nominal Wall Thickness:> | 0.562"         | Average Thickness Reading:> | 0.564       | Area Surface Readings: ↓ |                |             | Nominal Wall Thickness:> | Average Thickness Reading:> | #DIV/0! |
|--------------------------|----------------|----------------|--------------------------|----------------|-----------------------------|-------------|--------------------------|----------------|-------------|--------------------------|-----------------------------|---------|
| Location #:              | Thickness Min: | Thickness Max: | Location #:              | Thickness Min: | Thickness Max:              | Location #: | Thickness Min:           | Thickness Max: | Location #: | Thickness Min:           | Thickness Max:              |         |
| SPOT-1                   | 0.564          |                | SPOT-6                   | 0.565          |                             | CML-1       |                          |                | CML-6       |                          |                             |         |
| SPOT 2                   | 0.562          |                | SPOT-7                   | 0.565          |                             | CML-2       |                          |                | CML-7       |                          |                             |         |
| SPOT 3                   | 0.561          |                | SPOT-8                   | 0.567          |                             | CML-3       |                          |                | CML-8       |                          |                             |         |
| SPOT 4                   | 0.562          |                | SPOT-9                   | 0.563          |                             | CML-4       |                          |                | CML-9       |                          |                             |         |
| SPOT 5                   | 0.562          |                | SPOT-10                  | 0.567          |                             | CML-5       |                          |                | CML-10      |                          |                             |         |



Information On Above: ↓ Material:> Carbon Steel Surface Condition:> Painted / Coated

ATTACHED PIPING FOR VESSEL 440511

Information On Above: ↓ Material:> Carbon Steel Surface Condition:> Painted / Coated