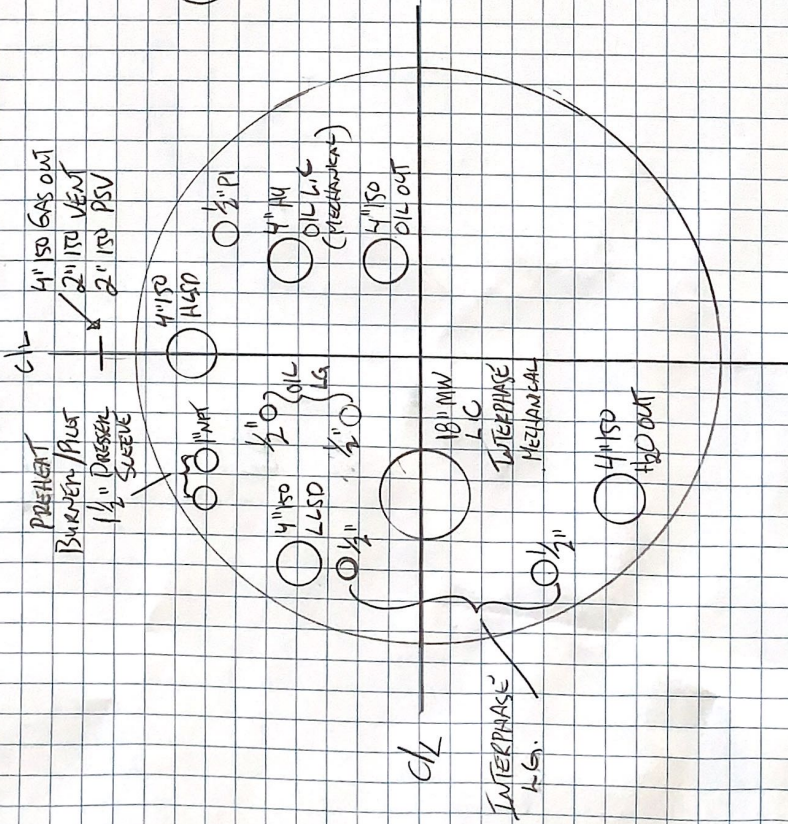
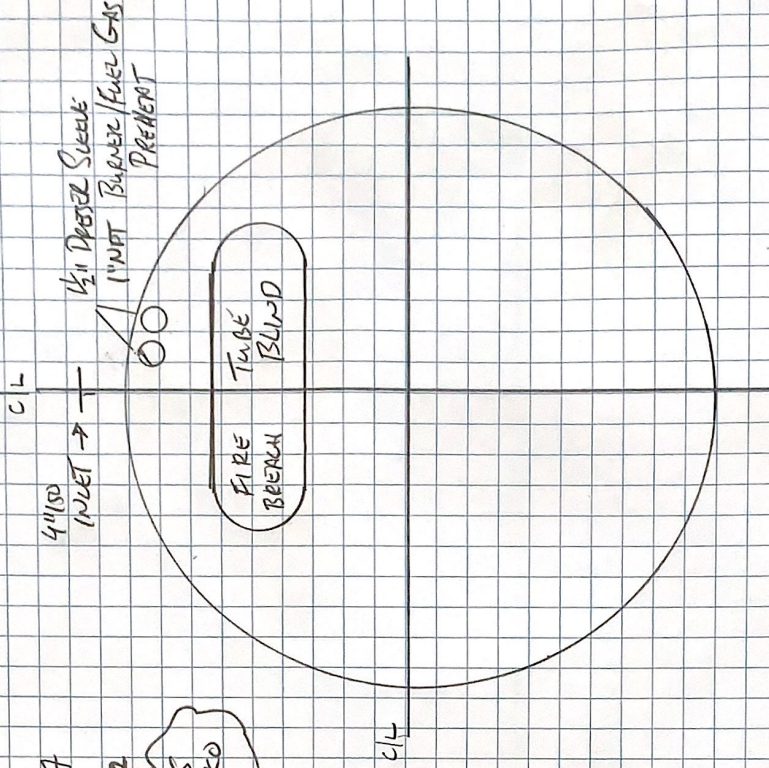
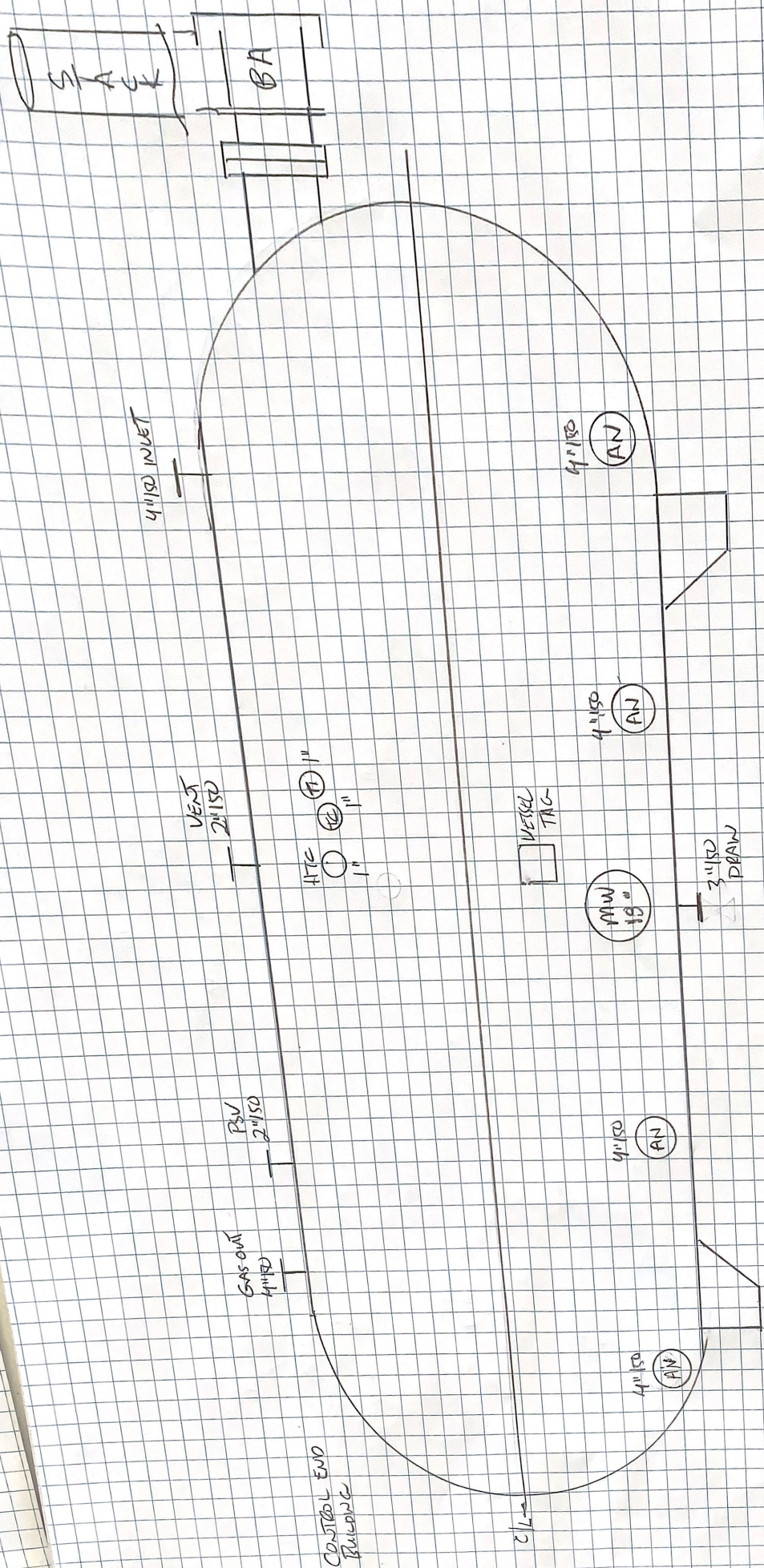


SIVALS FUNKO, HEATED, 3 PHASE  
 8' x 30' 75psi @ 220F, RT-3  
 BUILD 1997 SN 93364

A# 48853  
 NIB# H382  
 RETAINED 2/24/1997  
 CFN H31633  
 M 5247.2

NOTES: RUNNING AS  
 A COLD FUNKO





STACK

BA

4 INCH NUET

VENT  
2 INCH

HTC  
1 IN

AT  
1 IN

PSV  
2 INCH

GAS OUT  
4 INCH

CONTROL END  
BUILDING

2 IN

VESSEL  
TAG

MW  
18 IN

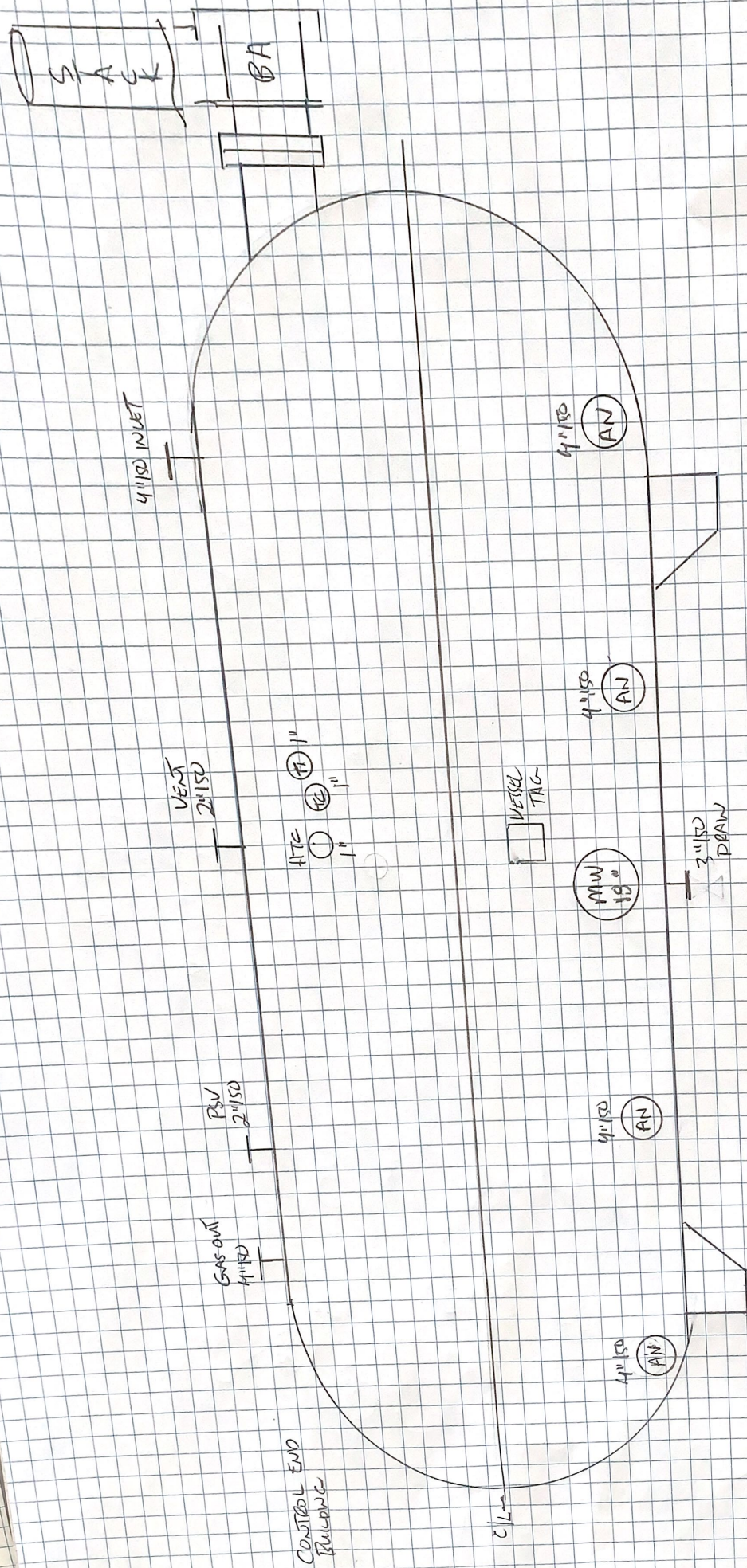
3 INCH  
DRAW

4 INCH  
AN

4 INCH  
AN

4 INCH  
AN

4 INCH  
AN





## IND STRUMENTATION

- AV-4 - 24" LONG ZINC/ALUMINUM SACRIFICIAL ANODE
- FE-1 - JR METER RUN
- BREV-1 - KIMRAY BACK PRESSURE REGULATOR OR SIMILAR
- LSSH+1 - 2" NPT LEVEL SWITCH ELECTRIC OR PNEUMATIC TBD BY CLIENT
- LSSL-1 - 2" NPT LEVEL SWITCH ELECTRIC OR PNEUMATIC TBD BY CLIENT  
BURNER MANAGEMENT SYSTEM
- LC-01K-1 - 4" ISO MECHANICAL IMVALCO FLOAT CONTROL ...  
C/W IP MECHANICAL - PNEUMATIC KIMRAY 3PS SWITCH.
- LC-1 - 2" NPT NORGUSEL 100A HORIZONTAL 12" DISPLACER DA  
INTERPHASE - SIDE MOUNT, L HOR R H TBD
- LCV-2 - 3" ISO FAIL CLOSE ACTIVATED DUMP VALVE. BRAND/TYPE TBD
- PSV-1 - 2" X 3" SIZED FOR CLIENTS CONDITIONS PRESSURE RELIEF VALVE
- PI-1 - 1/2" BM, LE, PS. O-100 PSI GAUGE
- LC-2 - TRANSPARENT ARMORED LEVEL GAUGE SIZED FOR LENGTH & MAINT

NOTE: IF DRESSED DOWN AS A HEATED FUKO ADD

- BSA-1 - BURNER ARRESTOR SIZED CORRECTLY  
2 - PIECE C/W HANG
- SRAK-1 - STACK FOR BURNER SREP  
CORRECTLY
- BMS-1 - BURNER MANAGEMENT SYSTEM