

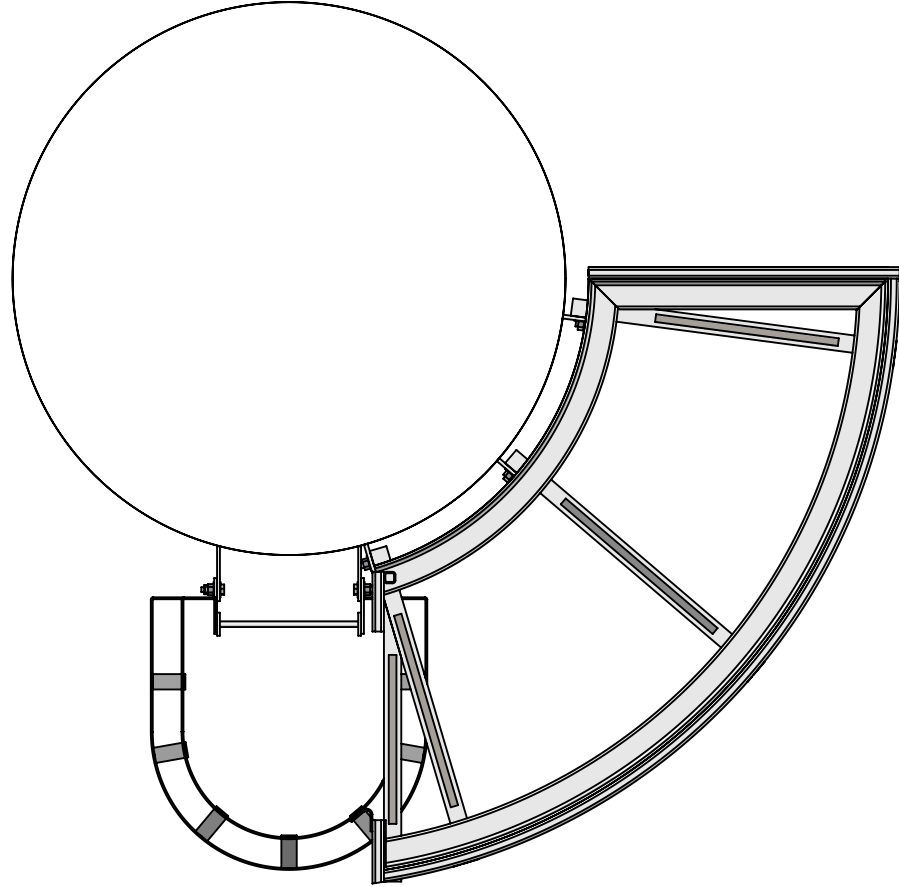
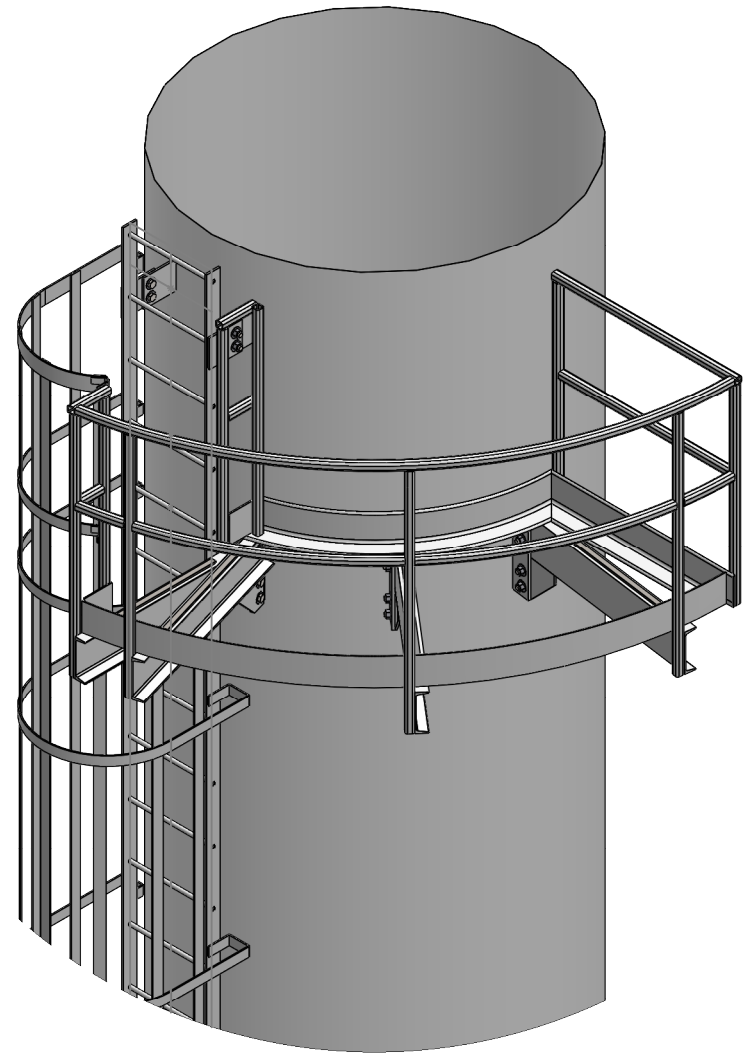
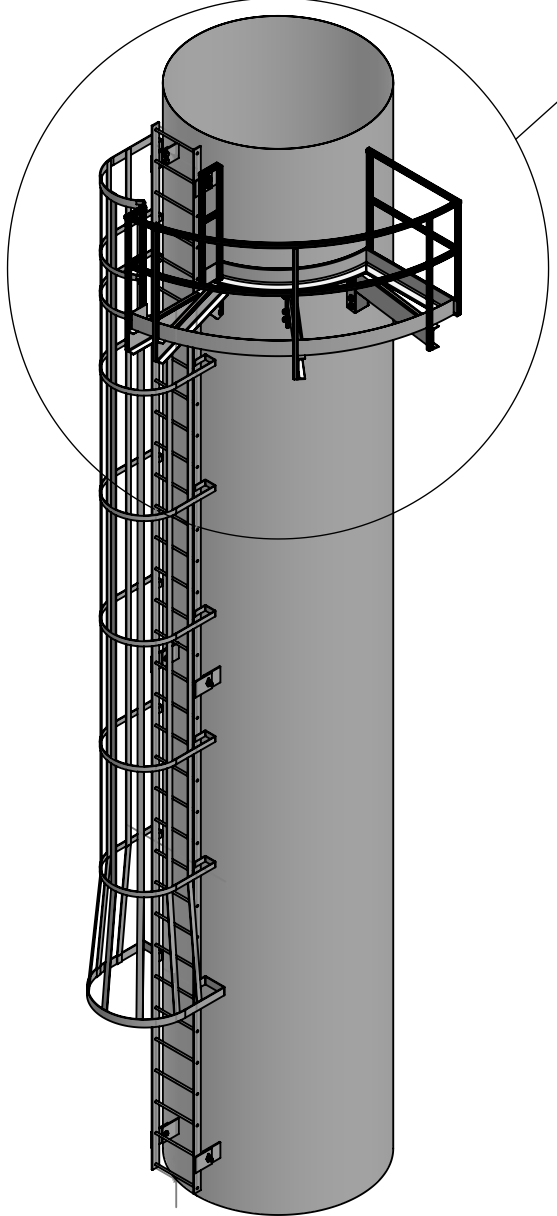
NUT ROTATION FROM SNUG-TIGHT CONDITION

Disposition of outer faces of bolted parts	Bolt length	Turn
Both faces normal to bolt axis or one face normal to axis and other face sloped 1:20 max. (bevelled washers not used)	Up to and including 4 diameters	1/3
	Over 4 diameters and not exceeding 8 diameters or 200mm (7-7/8")	1/2
	Exceeding 8 diameters or 200mm (7-7/8")	2/3
Both faces sloped 1:20 max. from normal to bolt axis (bevelled washer not used)	All lengths of bolts	3/4

*Nut rotation is rotation relative to a bolt regardless of whether the nut or bolt is turned. The tolerance is 30° over or under. This Table applies to coarse thread heavy-hex structural bolts of all sizes and lengths used with heavy-hex semi-finished nuts.
 ▷ Bolt length is measured from the underside of the head to the extreme end of point.
 ▷ Bevelled washers are necessary when A 490, A 490M, or F 2280 bolts are used.

NOTES

1	FABRICATORS AND WELDERS SHALL BE CERTIFIED TO CSA 47.1
2	ALL STRUCTURAL BOLTS SHALL BE A325 GRADE ALL OTHER BOLTS TO BE A307 GRADE
3	ALL BOLTS, NUTS, AND OTHER HARDWARE SHALL BE GALVANIZED. SERRATED TYPE GRATING SHALL BE USED.
4	ALL WELDS TO BE 1/4" FILLET WELDS, BOTH SIDES, UNLESS OTHERWISE NOTED
5	FLOOR GRATING TO BE GALVANIZED AND LEFT UNCOATED
6	ALL GRATING SHALL BE HELD IN PLACE BY MINIMUM 2 GRATING CLIPS PER GRATING SECTION, PER PLATFORM BEAM
7	ALL WELDS REQUIRE 100% VISUAL CHECK
8	A TEST FIT OF LADDER AND PLATFORM ON INCINERATOR ASSEMBLY IS REQUIRED PRIOR TO SHIPMENT
9	FULL FABRICATED ASSEMBLIES REQUIRE A 100% DIMENSIONAL CHECK
10	ALL LADDERS, HANDRAILS, CAGES, AND STRUCTURAL STEEL SHALL BE BLASTED TO SSPC-SP6 AND COATED SAFETY YELLOW WITH SUITABLE COATING FOR OUTDOOR SERVICE
11	LADDER AND PLATFORM TO BE REMOVED FOR SHIPMENT
12	PLATFORMS ARE DESIGNED FOR A LIVE LOAD OF 75 PSF AREA LOAD OR 1000 LB CONCENTATED LOAD.



DETAIL A
SCALE 1 : 30

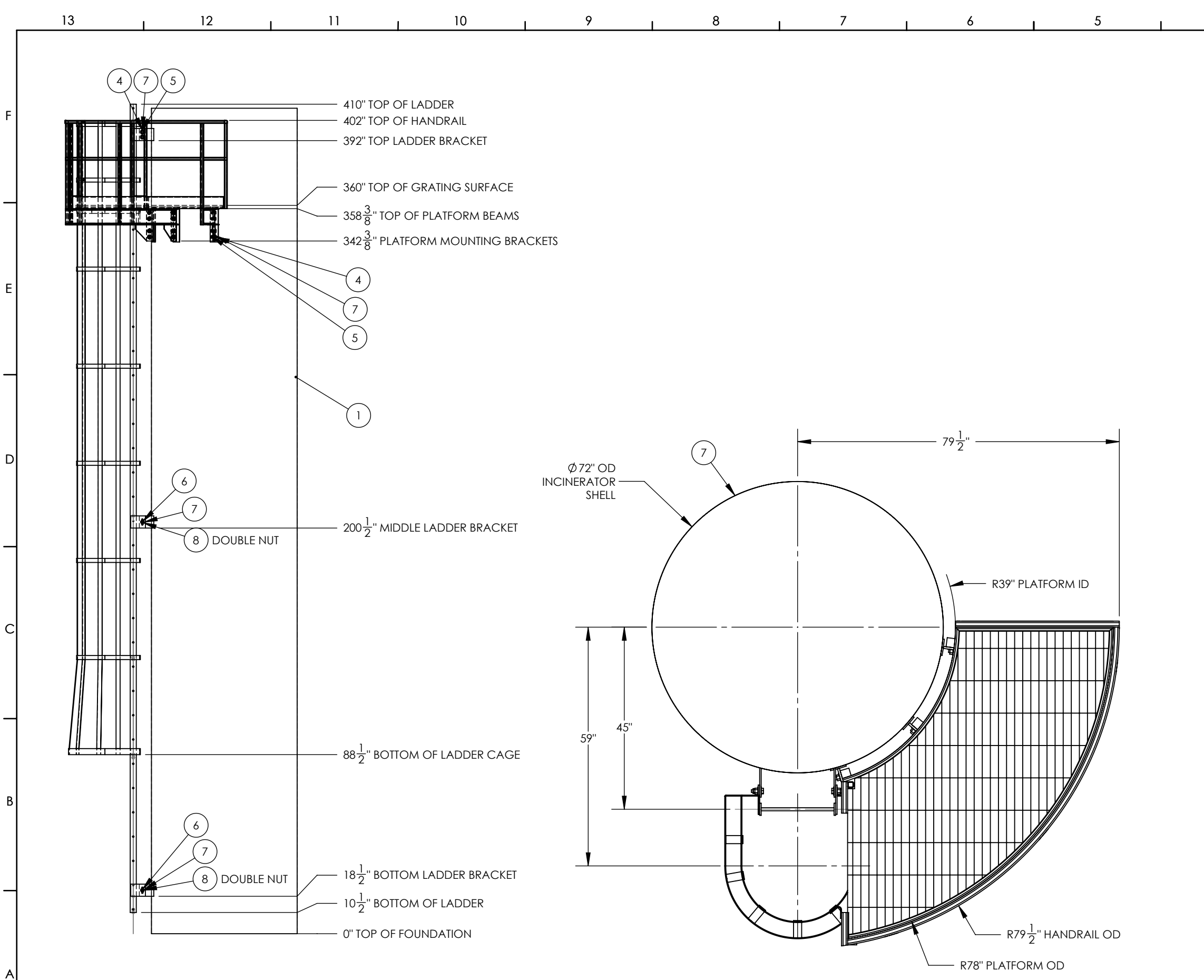
GENERAL NOTES: A) UNLESS OTHERWISE SPECIFIED, DIMENSIONS ARE IN INCHES.
 B) TOLERANCES:
 DECIMAL FRACTION ANGULAR
 X = +/- .1 +/- 1/16 X = +/- 1°
 .XX = +/- .03 .X = +/- .5°
 .XXX = +/- .010
 C) ALL HOLES, SQUARES, SLOTS, CUTOUTS & EDGES TO BE BURR FREE.
 D) ALL WELDS TO BE APPROPRIATE FOR FINAL ASSEMBLY AND PAINT.
 E) SHEET TO BE PRINTED ON 11 x 17 PAPER ONLY

REV	DESCRIPTION	DATE	AUTHOR	SIGNATURE
A	ISSUED FOR INFORMATION	08APR2018	JEB	
B	ISSUED FOR APPROVAL	29MAY2018	JEB	
C	ISSUED FOR CONSTRUCTION	10JUN2018	JEB	
D	AS-BUILT	01JAN2019	JEB	

THE INFORMATION CONTAINED IN THIS DRAWING IS THE SOLE PROPERTY OF CDN CONTROLS. ANY REPRODUCTION IN PART OR AS A WHOLE WITHOUT THE WRITTEN PERMISSION OF CDN IS PROHIBITED.



CUSTOMER: CRESCENT POINT	TITLE PAGE	
WORK ORDER: B3821-CRE-COB		
SCALE: 1:60	DWG NO.: DRW-STR-006_3RD LADDER-PLATFORM	REV NO.: D
		SHEET 1 of 7



ITEM NO.	QTY.	DESCRIPTION	LENGTH	MATERIAL
1	16	BOLT 3/4"-10 x 2" LONG	N/A	A325 TYPE 1 GALVANIZED
2	4	BOLT 5/8-11 x 2 1/2" LONG	N/A	A325 TYPE 1 GALVANIZED
3	32	FLAT WASHER 3/4"	N/A	F436 GALVANIZED
4	8	FLAT WASHER 5/8"	N/A	F436 GALVANIZED
5	16	NUT HEX 3/4"-10	N/A	A563 GALVANIZED
6	8	NUT HEX 5/8"-11	N/A	A563 GALVANIZED
7	1	6' OD STACK SHELL		A516-70N
8	34	3/4" ROUND BAR	18 3/8"	44W
9	3	C8x11.5	42 1/2"	44W
10	1	C8x11.5	36 13/16"	44W
11	2	FB 0.25" x 1.25"	6 1/16"	44W
12	5	FB 0.25" x 2"	96-1/16"	44W
13	1	FB 0.25" x 2"	58-7/8"	44W
14	5	FB 0.25" x 2"	313-11/16"	44W
15	1	FB 0.25" x 2"	63-7/16"	44W
16	2	FB 0.25" x 2"	262 1/16"	44W
17	1	FB 0.25" x 2"	58 13/16"	44W
18	1	FB 0.25" x 3"	116-11/16"	44W
19	1	FB 0.25" x 6"	6 1/4"	44W
20	1	FB 0.25" x 6"	6 1/8"	44W
21	1	FB 0.375" x 1"	22"	44W
22	2	FB 0.375" x 1"	26"	44W
23	1	FB 0.375" x 1"	24"	44W
24	2	FB 0.375" x 3"	399 1/2"	44W
25	2	FB 0.375" x 6"	7 1/4"	44W
26	4	FB 0.375" x 6"	7 1/4"	44W
27	2	FB 0.375" x 6"	7 1/8"	44W
28	4	FB 0.375" x 6"	7 1/8"	44W
29	1	L6x4x0.375	40 1/2"	44W
30	1	L6x4x0.375	106 15/16"	44W
31	1	L6x4x0.375	52 5/8"	44W
32	3	PLATE 1/2" THK X 16" L X 3 5/8" W	-	44W
33	3	PLATE 3/8" THK X 17" L X 4" W	-	44W
34	3	PLATE 3/8" THK X 9" L X 8" W	-	44W
35	3	TS1.5x1.5x0.1875	42 1/8"	50W
36	1	TS1.5x1.5x0.1875	40 1/2"	50W
37	1	TS1.5x1.5x0.1875	111 7/16"	50W
38	1	TS1.5x1.5x0.1875	8 1/4"	50W
39	1	TS1.5x1.5x0.1875	37 1/2"	50W
40	1	TS1.5x1.5x0.1875	7 3/4"	50W
41	1	TS1.5x1.5x0.1875	8 7/8"	50W
42	2	TS1.5x1.5x0.1875	43 7/8"	50W
43	1	TS1.5x1.5x0.1875	10 5/16"	50W
44	1	TS1.5x1.5x0.1875	6 1/4"	50W
45	6	TS1.5x1.5x0.1875	50 1/8"	50W
46	1	TS1.5x1.5x0.1875	43 1/4"	50W
47	1	TS1.5x1.5x0.1875	5"	50W
48	1	SERRATED GRATING 1-1/4" x 3/16" - 19-W-4	-	Galvanized Steel

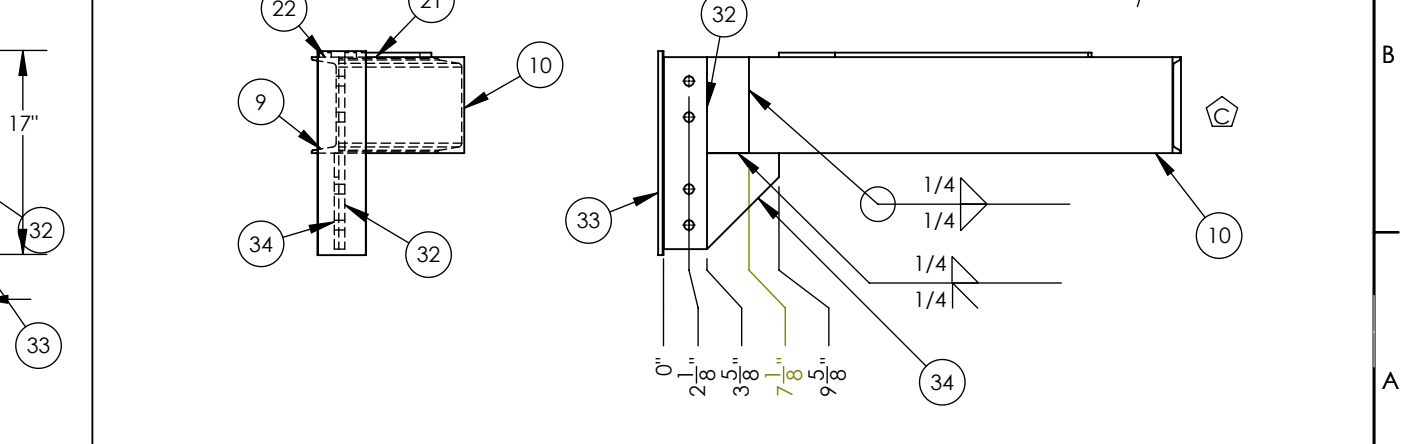
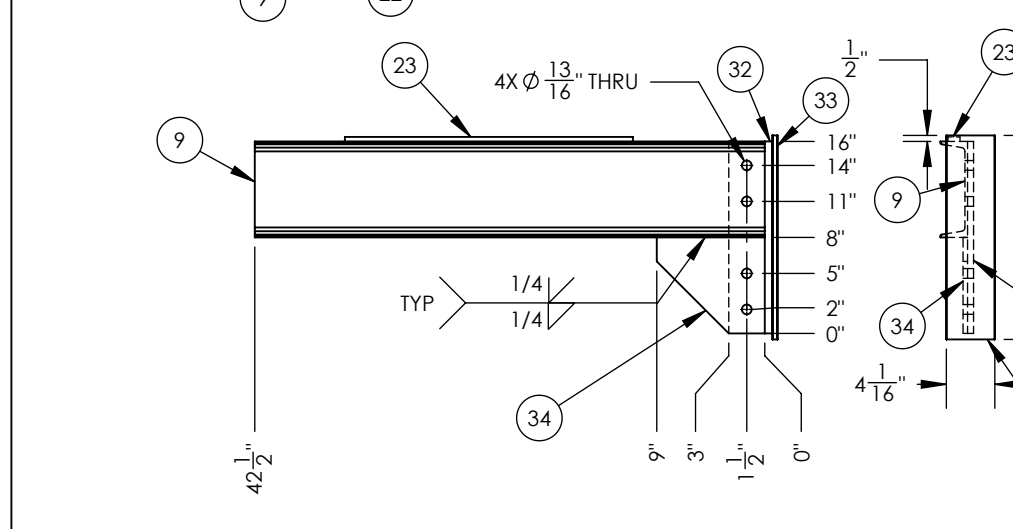
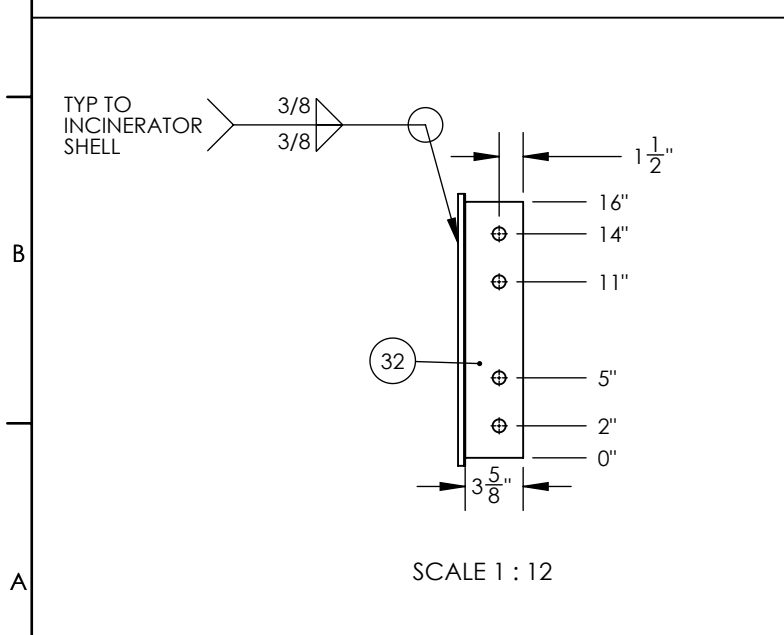
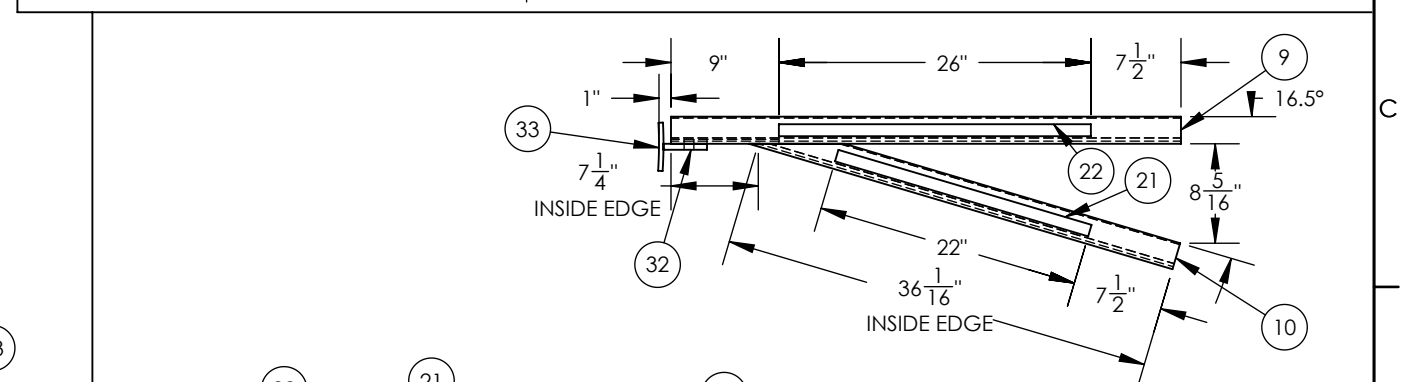
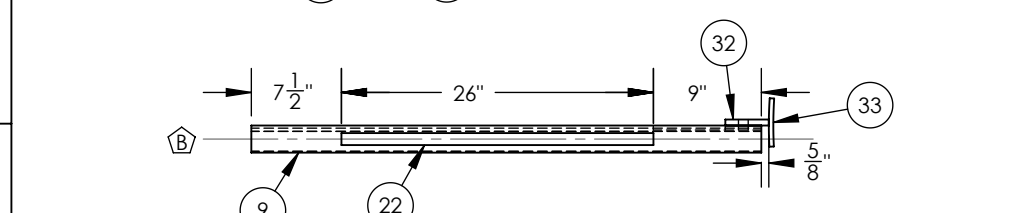
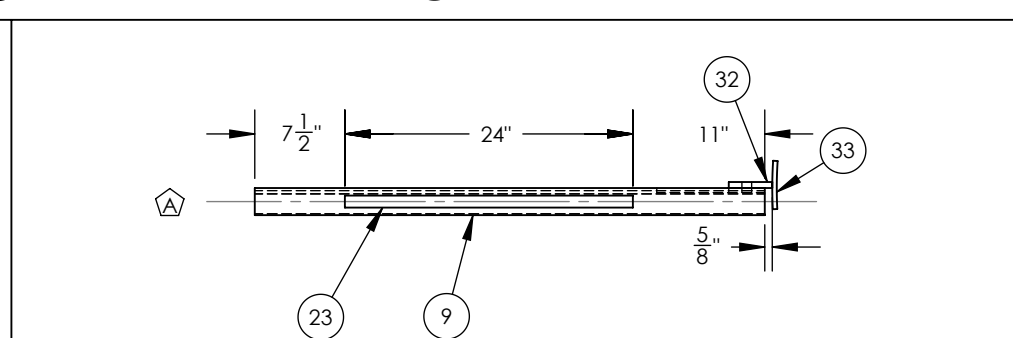
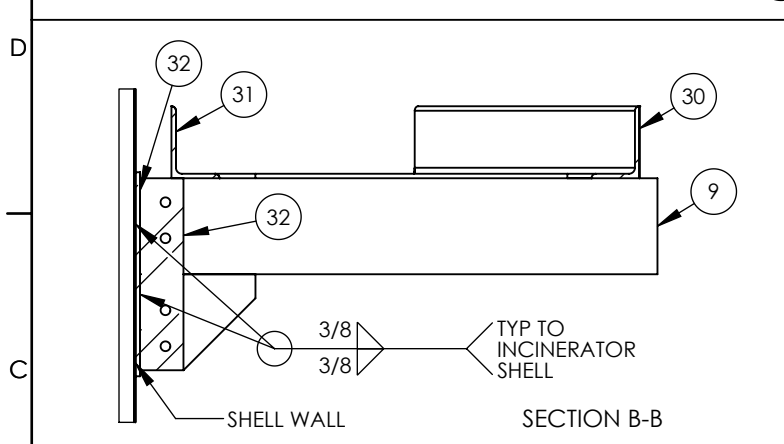
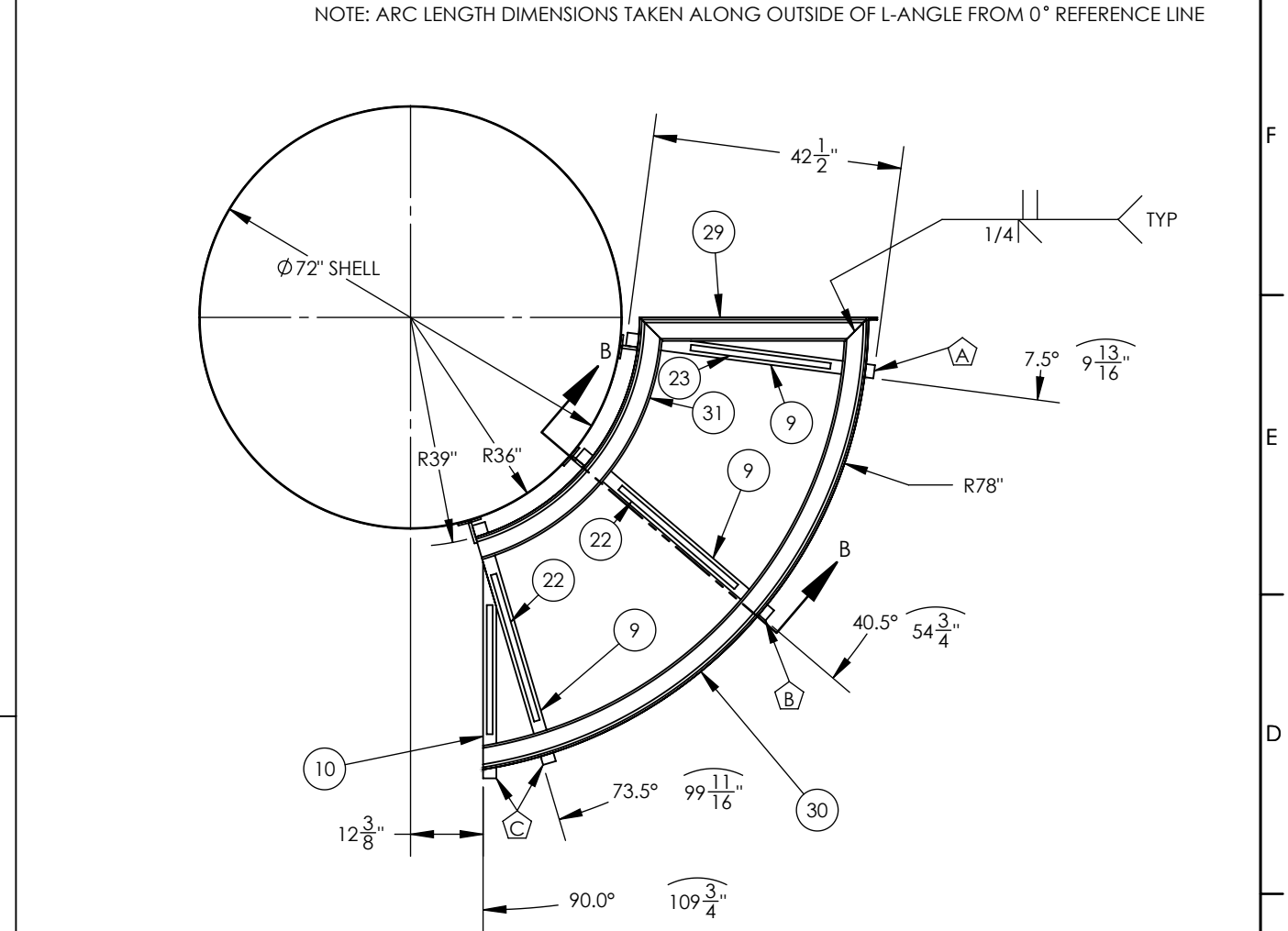
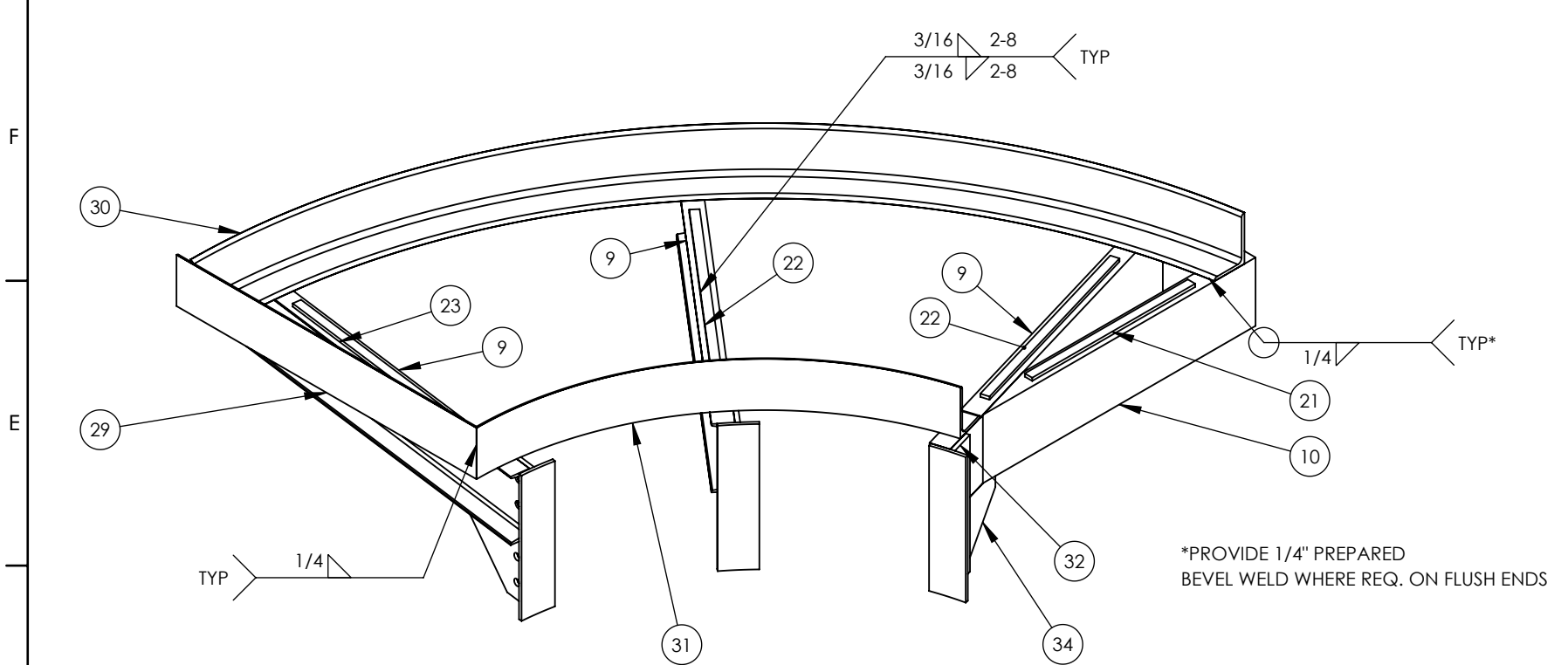
GENERAL NOTES: A) UNLESS OTHERWISE SPECIFIED, DIMENSIONS ARE IN INCHES.
 B) TOLERANCES:
 DECIMAL FRACTION ANGULAR
 X = +/- .1 +/- .1/16 X = +/- 1°
 .XX = +/- .03 .XXX = +/- .010
 C) ALL HOLES, SQUARES, SLOTS, CUTOUTS & EDGES TO BE BURR FREE.
 D) ALL WELDS TO BE APPROPRIATE FOR FINAL ASSEMBLY AND PAINT.
 E) SHEET TO BE PRINTED ON 11 x 17 PAPER ONLY

REV	DESCRIPTION	DATE	AUTHOR	SIGNATURE
A	ISSUED FOR INFORMATION	08APR2018	JEB	
B	ISSUED FOR APPROVAL	29MAY2018	JEB	
C	ISSUED FOR CONSTRUCTION	10JUN2018	JEB	
D	AS-BUILT	01JAN2019	JEB	

THE INFORMATION CONTAINED IN THIS DRAWING IS THE SOLE PROPERTY OF CDN CONTROLS. ANY REPRODUCTION IN PART OR AS A WHOLE WITHOUT THE WRITTEN PERMISSION OF CDN IS PROHIBITED.



CUSTOMER: CRESCENT POINT
 WORK ORDER: B3821-CRE-COB
 OVERALL DIMENSIONS - BOM
 SCALE: 1:50
 DWG NO.: DRW-STR-006_3RD LADDER-PLATFORM
 REV NO.: D
 SHEET 2 of 7



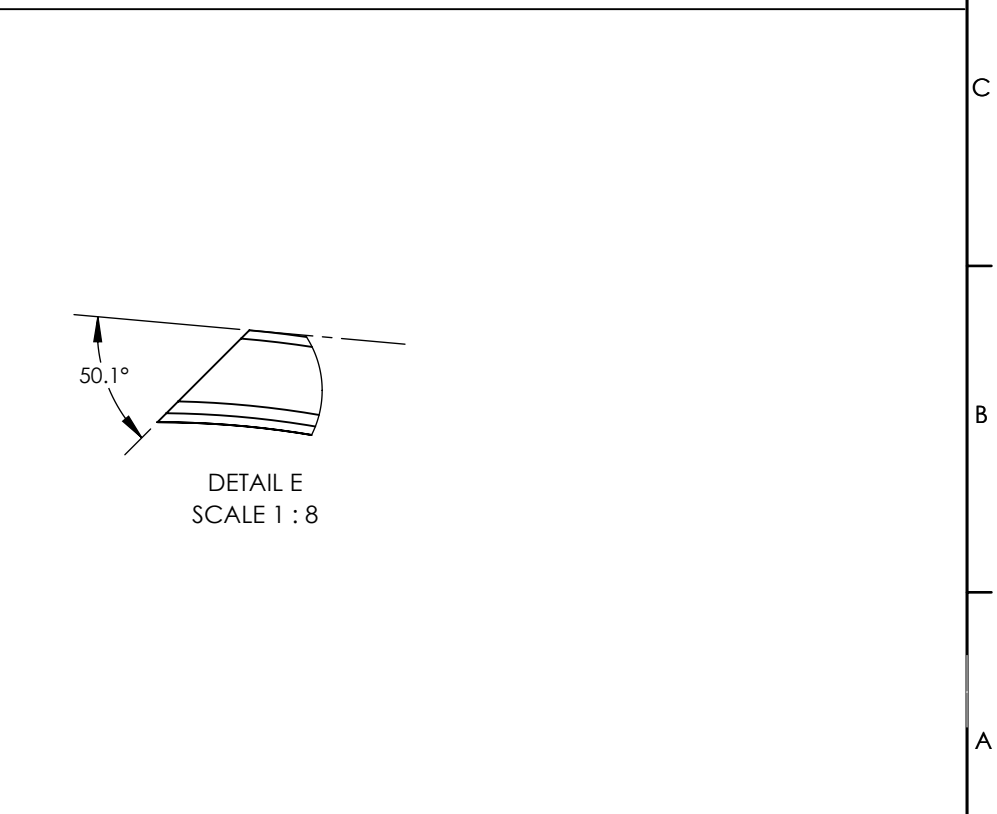
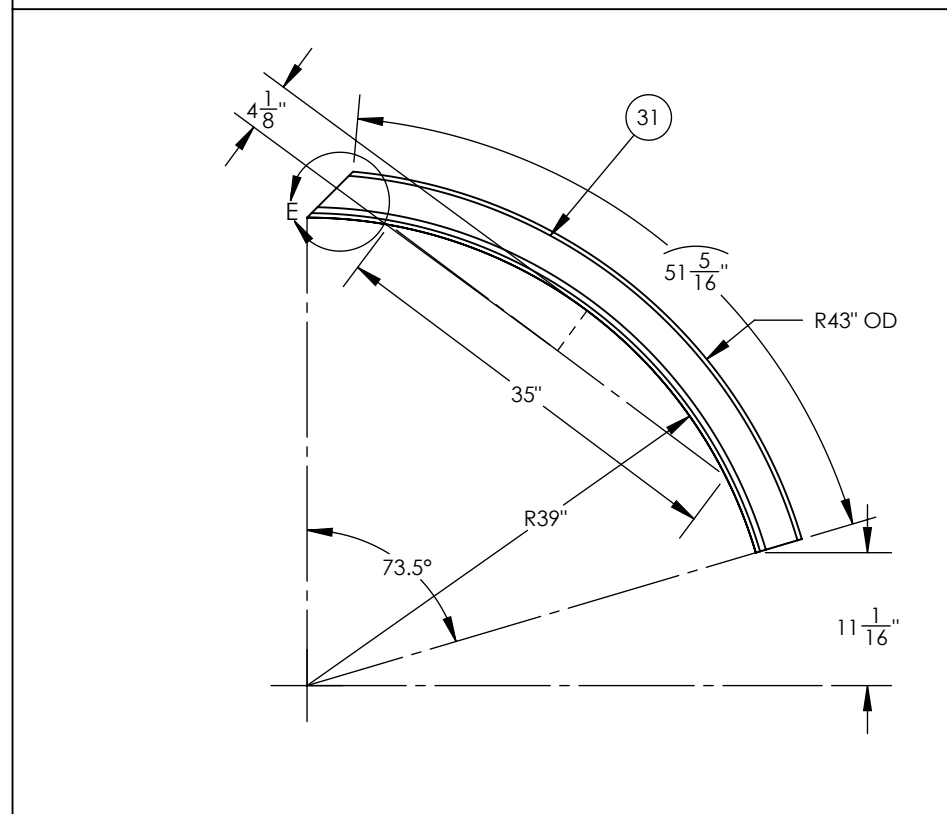
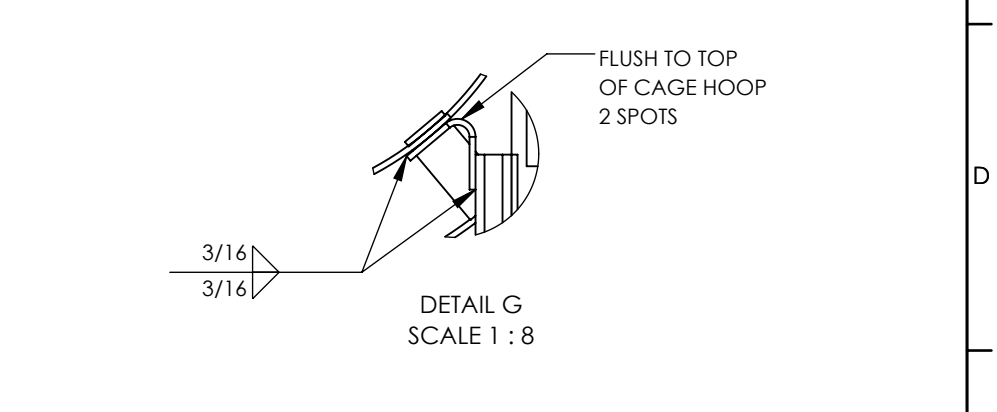
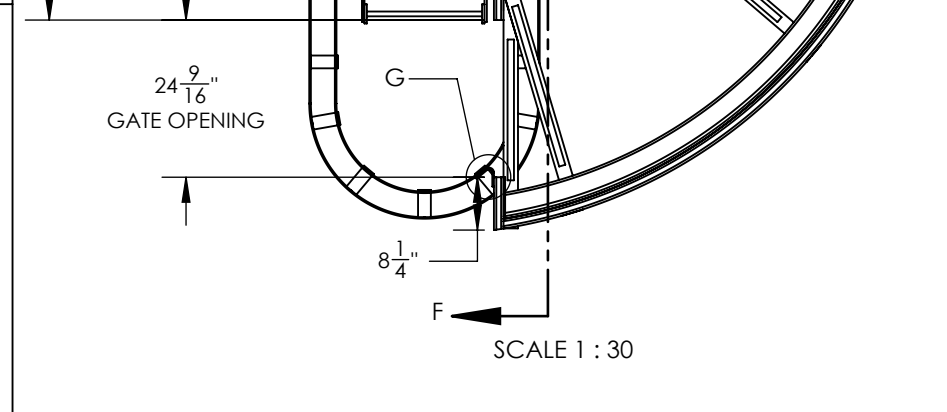
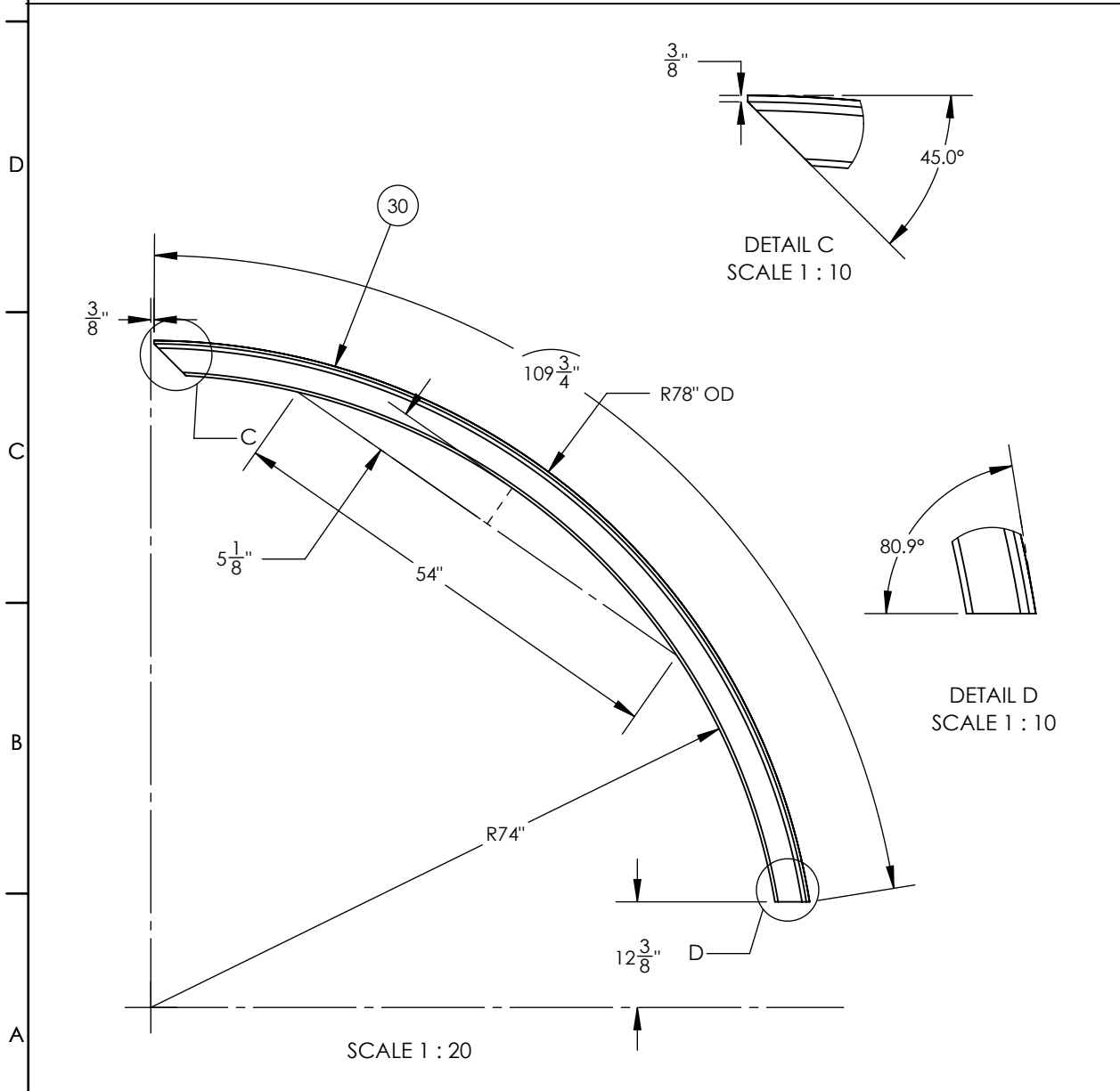
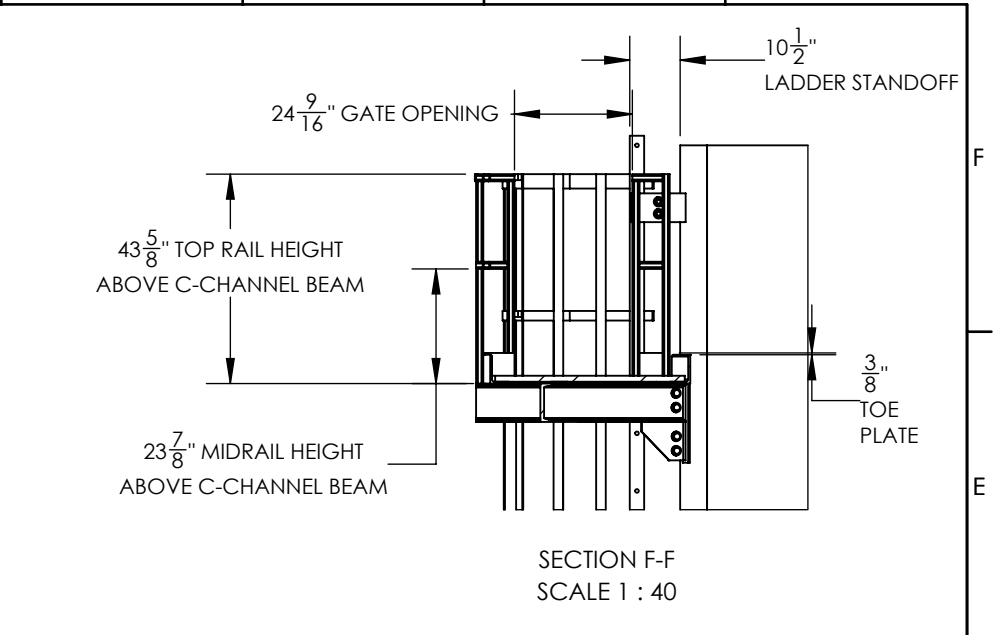
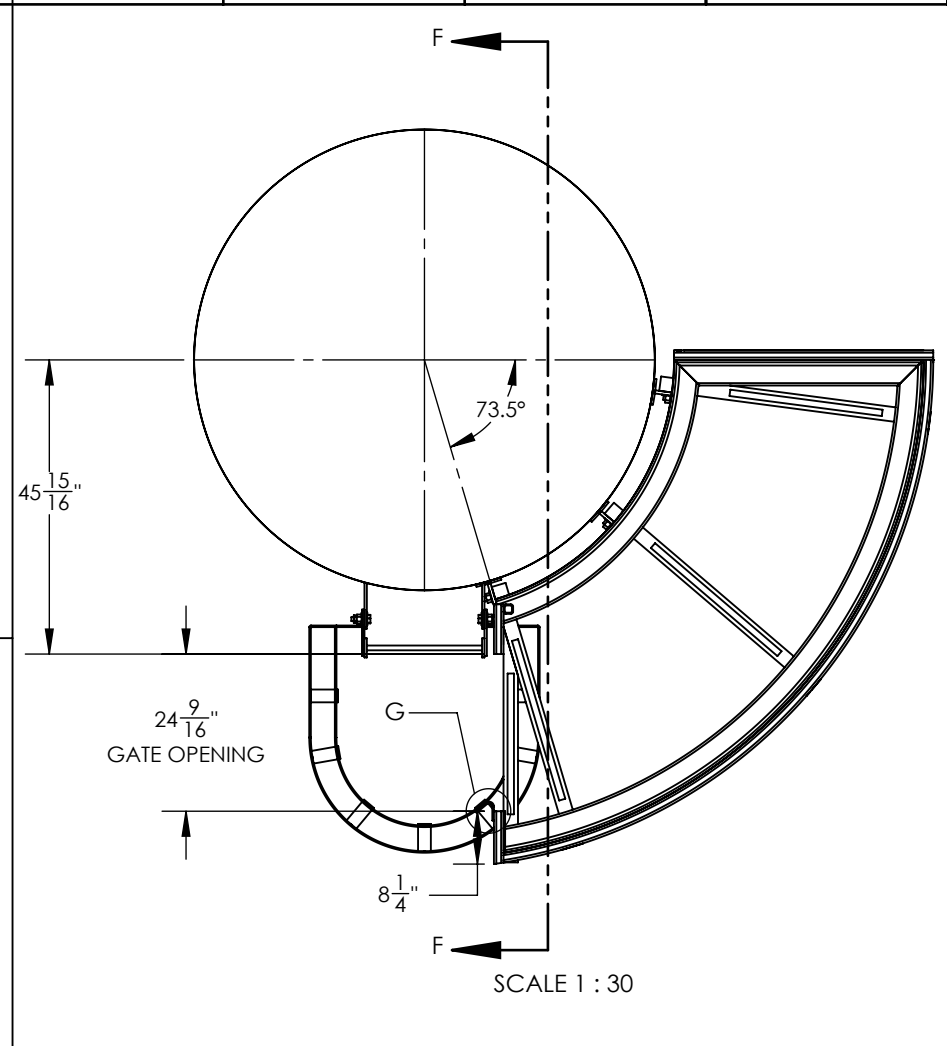
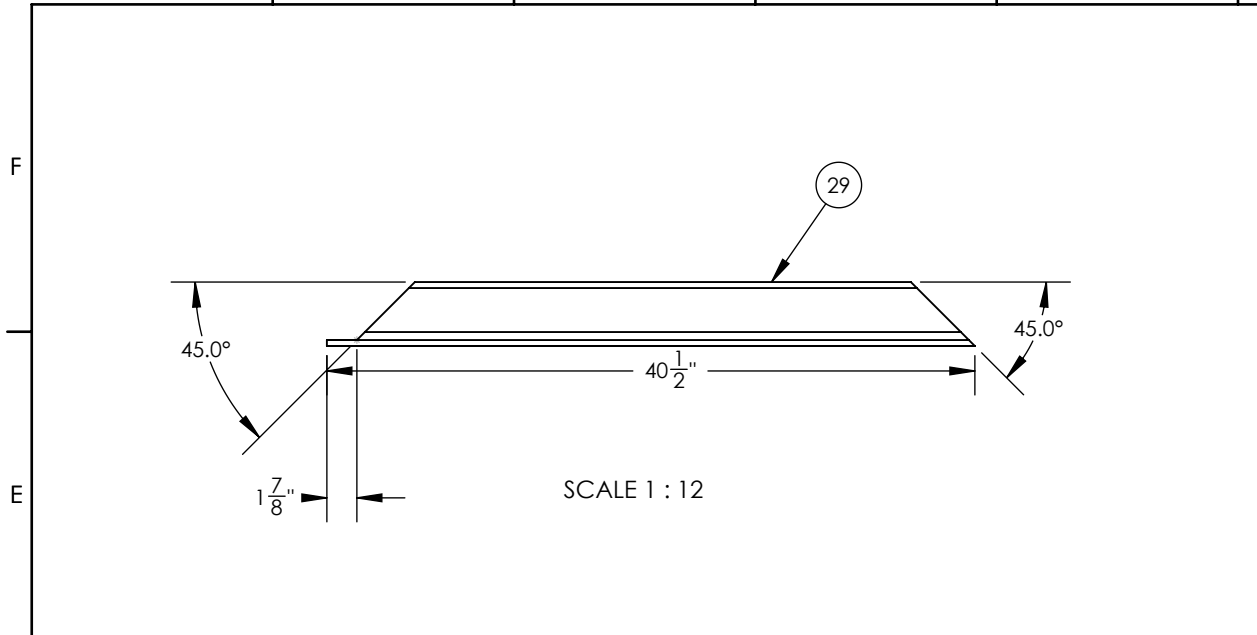
GENERAL NOTES: A) UNLESS OTHERWISE SPECIFIED, DIMENSIONS ARE IN INCHES. B) TOLERANCES: DECIMAL FRACTION X = +/- .1, .XX = +/- .03, .XXX = +/- .010. C) ALL HOLES, SQUARES, SLOTS, CUTOUTS & EDGES TO BE BURR FREE. D) ALL WELDS TO BE APPROPRIATE FOR FINAL ASSEMBLY AND PAINT. E) SHEET TO BE PRINTED ON 11 x 17 PAPER ONLY.

REV	DESCRIPTION	DATE	AUTHOR	SIGNATURE
A	ISSUED FOR INFORMATION	08APR2018	JEB	
B	ISSUED FOR APPROVAL	29MAY2018	JEB	
C	ISSUED FOR CONSTRUCTION	10JUN2018	JEB	
D	AS-BUILT	01JAN2019	JEB	

THE INFORMATION CONTAINED IN THIS DRAWING IS THE SOLE PROPERTY OF CDN CONTROLS. ANY REPRODUCTION IN PART OR AS A WHOLE WITHOUT THE WRITTEN PERMISSION OF CDN IS PROHIBITED.



CUSTOMER: CRESCENT POINT	PLATFORM DETAILS
WORK ORDER: B3821-CRE-COB	
SCALE: 1:16	REV NO.: D
DWG NO.: DRW-STR-006_3RD LADDER-PLATFORM	SHEET 3 of 7



GENERAL NOTES: A) UNLESS OTHERWISE SPECIFIED, DIMENSIONS ARE IN INCHES.
B) TOLERANCES:
DECIMAL FRACTION ANGULAR
X = +/- .1 X = +/- .1°
.XX = +/- .03 X = +/- .5°
.XXX = +/- .010

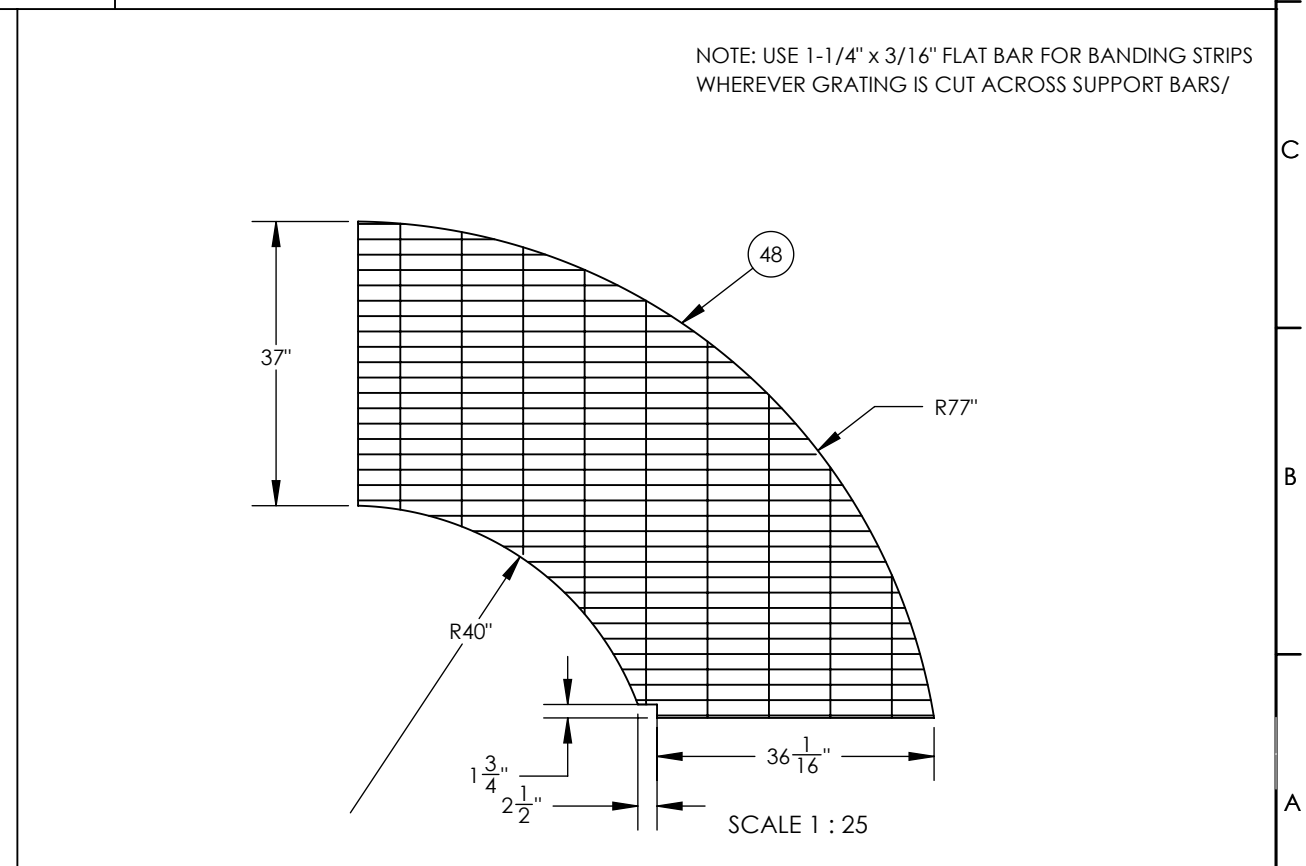
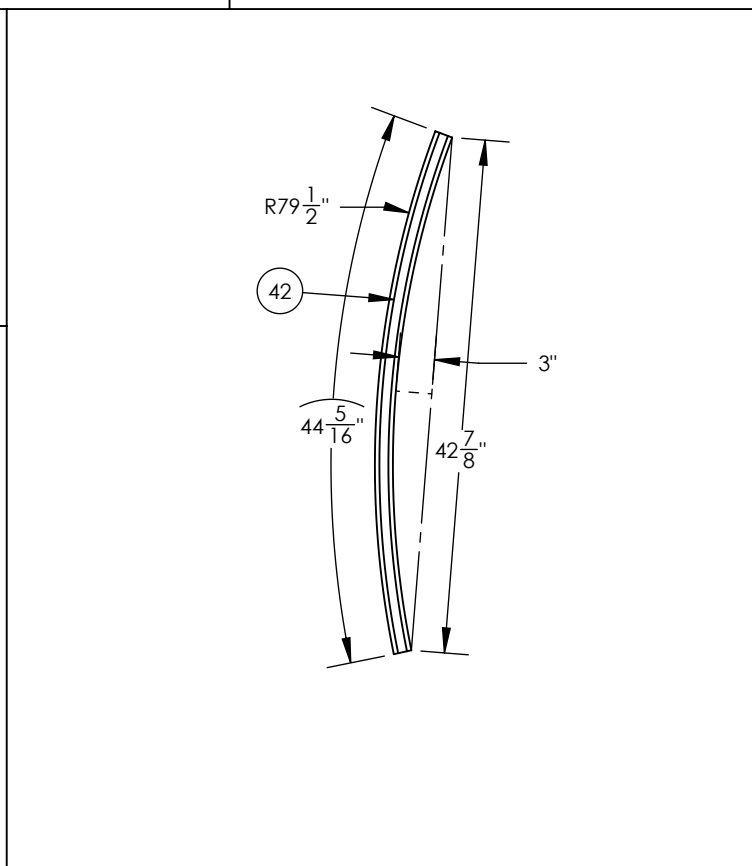
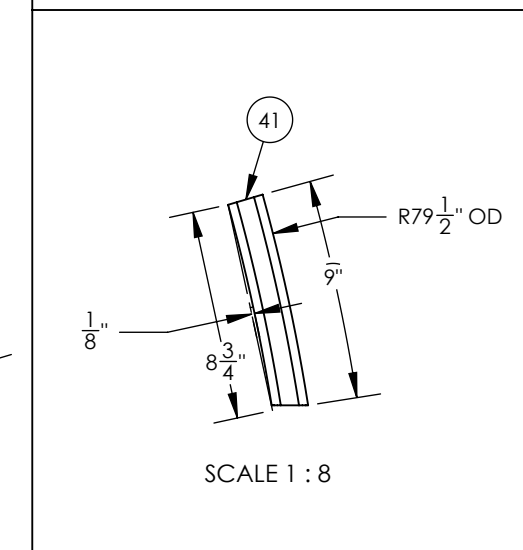
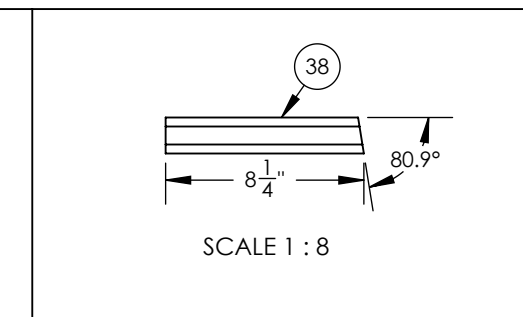
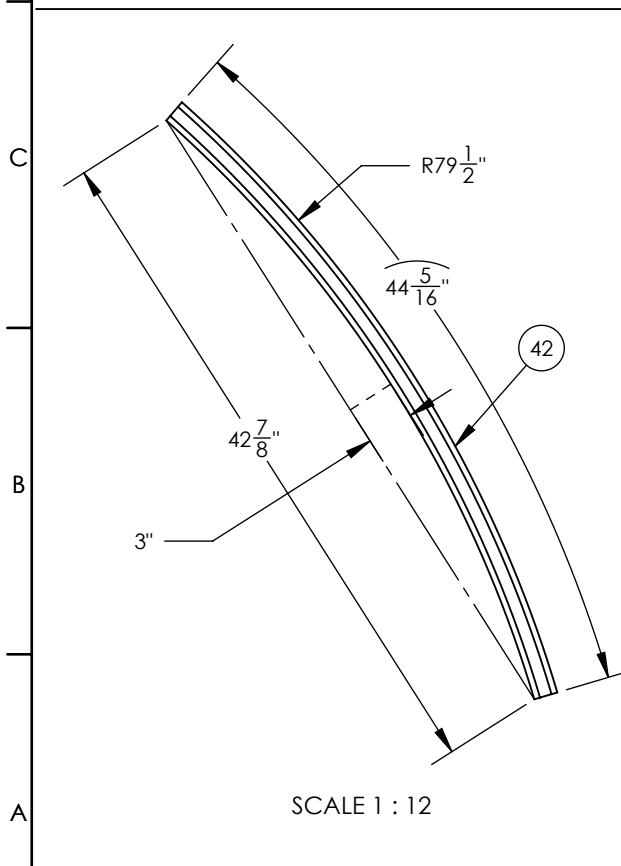
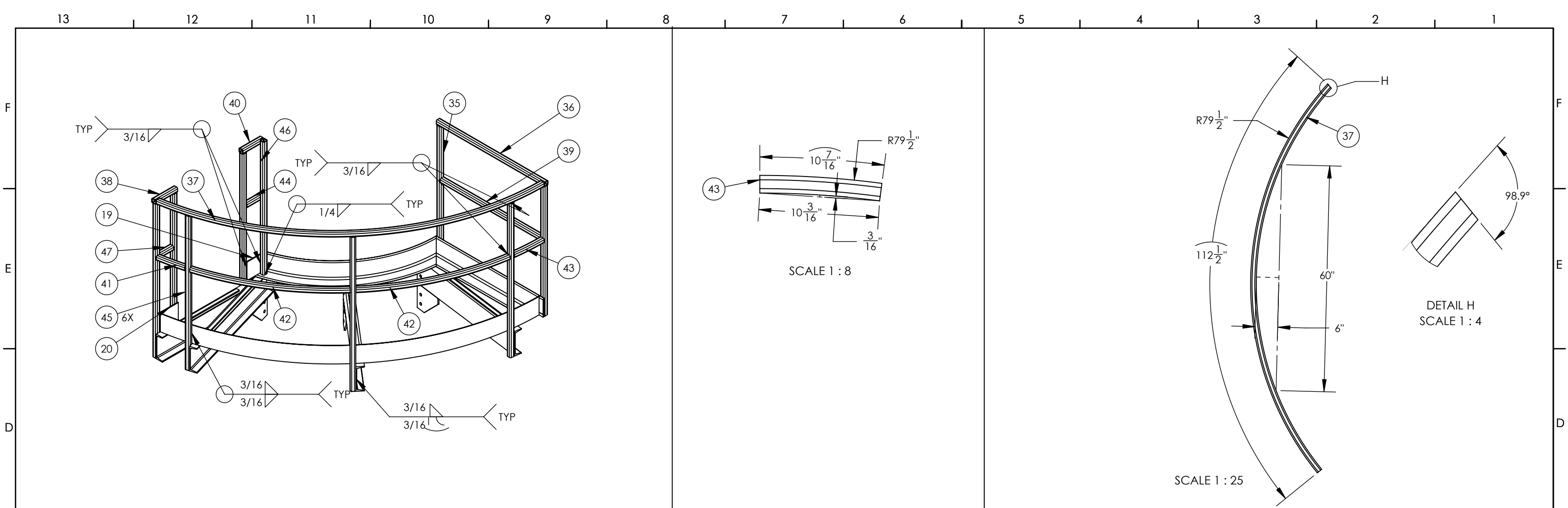
C) ALL HOLES, SQUARES, SLOTS, CUTOUTS & EDGES TO BE BURR FREE.
D) ALL WELDS TO BE APPROPRIATE FOR FINAL ASSEMBLY AND PAINT.
E) SHEET TO BE PRINTED ON 11 x 17 PAPER ONLY

REV	DESCRIPTION	DATE	AUTHOR	SIGNATURE
A	ISSUED FOR INFORMATION	08APR2018	JEB	
B	ISSUED FOR APPROVAL	29MAY2018	JEB	
C	ISSUED FOR CONSTRUCTION	10JUN2018	JEB	
D	AS-BUILT	01JAN2019	JEB	

THE INFORMATION CONTAINED IN THIS DRAWING IS THE SOLE PROPERTY OF CDN CONTROLS. ANY REPRODUCTION IN PART OR AS A WHOLE WITHOUT THE WRITTEN PERMISSION OF CDN IS PROHIBITED.



CUSTOMER: CRESCENT POINT	PLATFORM DETAILS 2 - HANDRAIL	
WORK ORDER: B3821-CRE-COB		
SCALE: 1:16	DWG NO.: DRW-STR-006_3RD LADDER-PLATFORM	REV NO.: D
		SHEET 4 of 7



GENERAL NOTES: A) UNLESS OTHERWISE SPECIFIED, DIMENSIONS ARE IN INCHES.
 B) TOLERANCES:
 DECIMAL FRACTION ANGULAR
 .X = +/- .1 X = +/- 1°
 .XX = +/- .03 X = +/- .5°
 .XXX = +/- .010

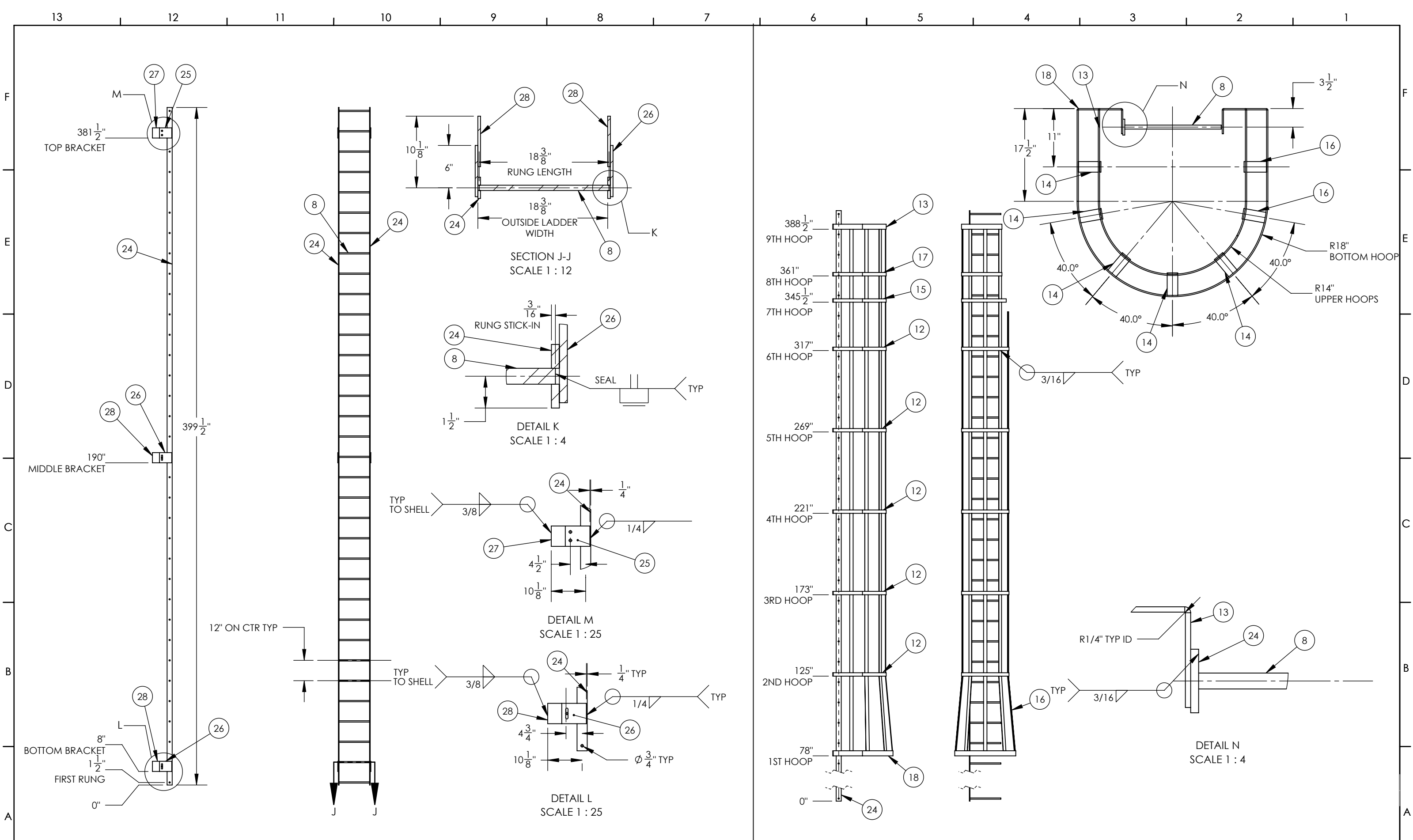
C) ALL HOLES, SQUARES, SLOTS, CUTOUTS & EDGES TO BE BURR FREE.
 D) ALL WELDS TO BE APPROPRIATE FOR FINAL ASSEMBLY AND PAINT.
 E) SHEET TO BE PRINTED ON 11 x 17 PAPER ONLY

REV	DESCRIPTION	DATE	AUTHOR	SIGNATURE
A	ISSUED FOR INFORMATION	08APR2018	JEB	
B	ISSUED FOR APPROVAL	29MAY2018	JEB	
C	ISSUED FOR CONSTRUCTION	10JUN2018	JEB	
D	AS-BUILT	01JAN2019	JEB	

THE INFORMATION CONTAINED IN THIS DRAWING IS THE SOLE PROPERTY OF CDN CONTROLS. ANY REPRODUCTION IN PART OR AS A WHOLE WITHOUT THE WRITTEN PERMISSION OF CDN IS PROHIBITED.



CUSTOMER: CRESCENT POINT	HANDRAIL DETAILS	
WORK ORDER: B3821-CRE-COB		
SCALE: 1:16	DWG NO.: DRW-STR-006_3RD LADDER-PLATFORM	REV NO.: D
		SHEET 5 of 7



GENERAL NOTES:

A) UNLESS OTHERWISE SPECIFIED, DIMENSIONS ARE IN INCHES.

B) TOLERANCES:
 DECIMAL FRACTION ANGULAR
 X = +/- .1 X = +/- .1°
 .XX = +/- .03 .XXX = +/- .010

C) ALL HOLES, SQUARES, SLOTS, CUTOUTS & EDGES TO BE BURR FREE.

D) ALL WELDS TO BE APPROPRIATE FOR FINAL ASSEMBLY AND PAINT.

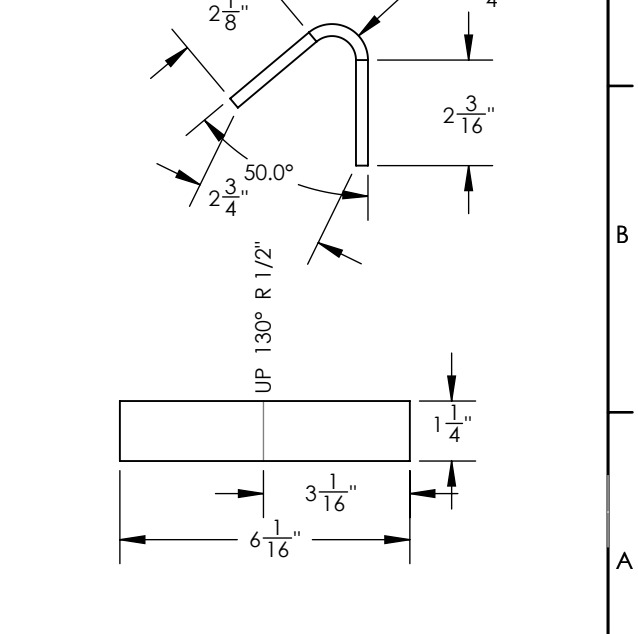
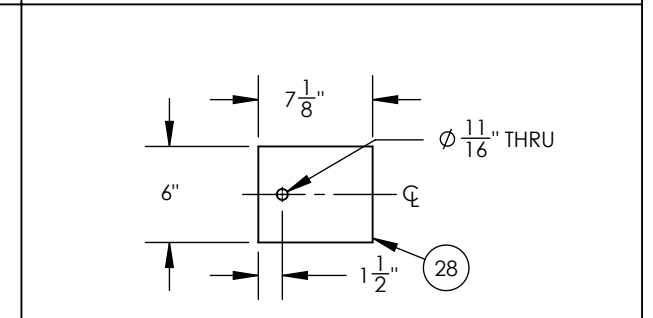
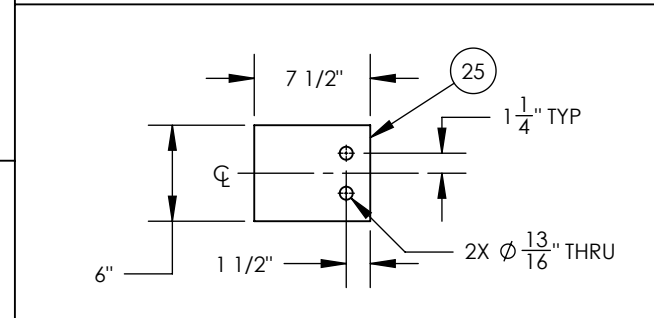
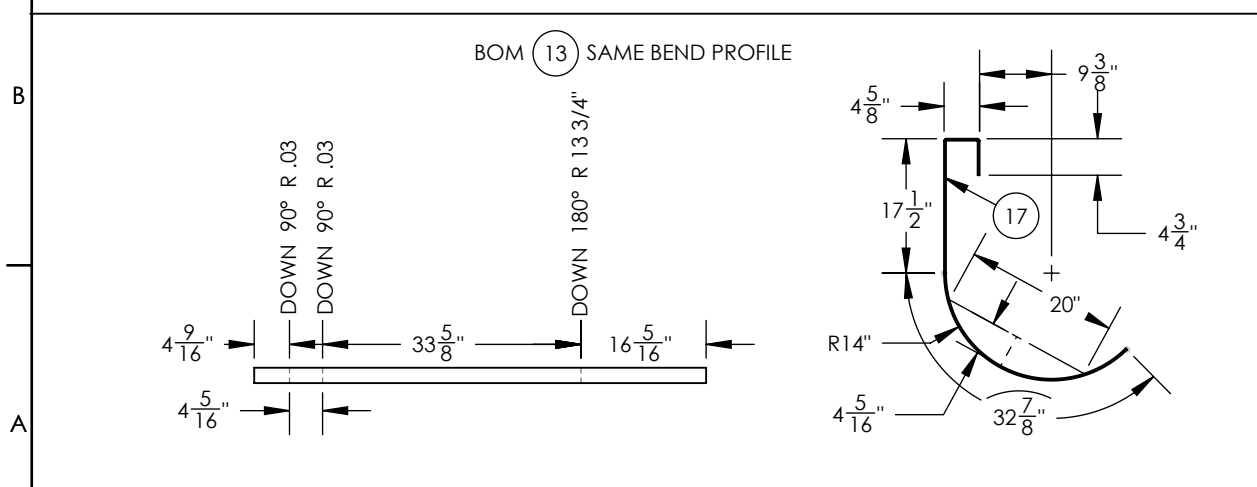
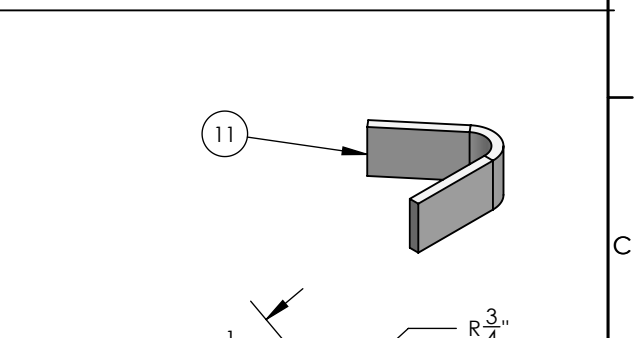
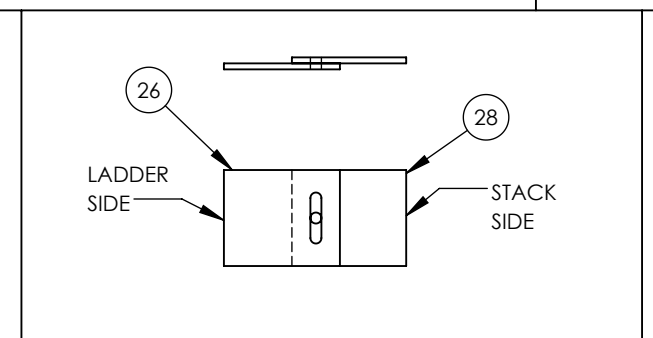
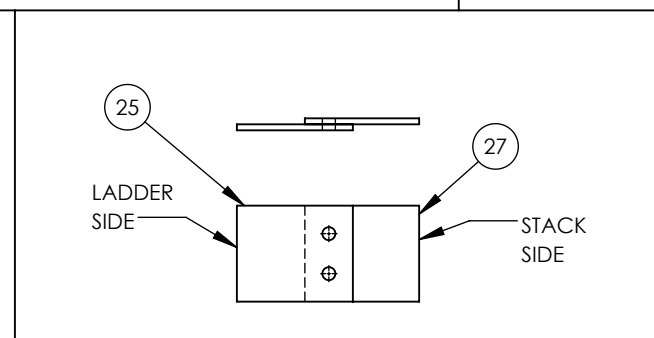
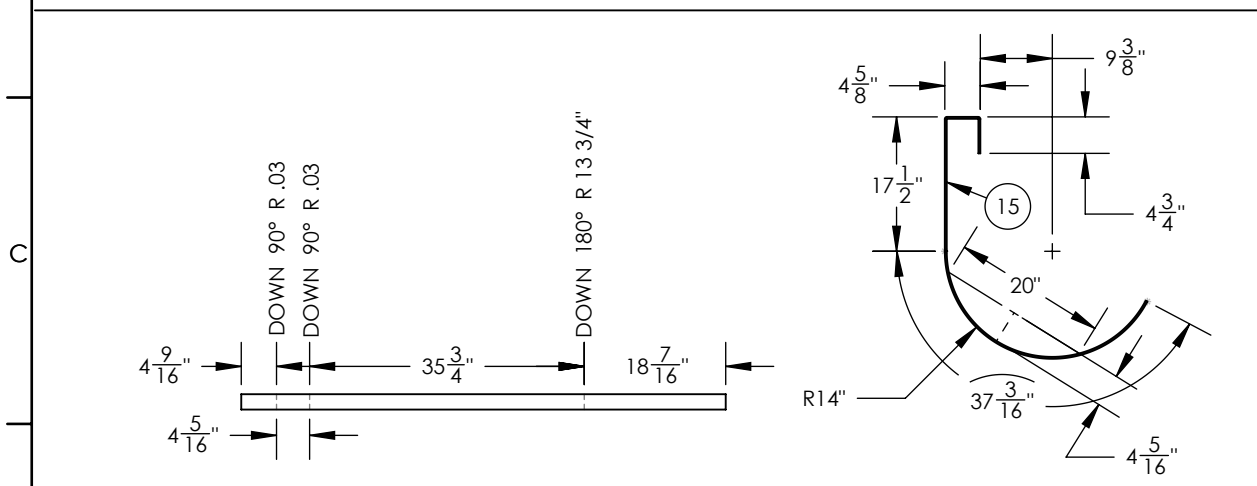
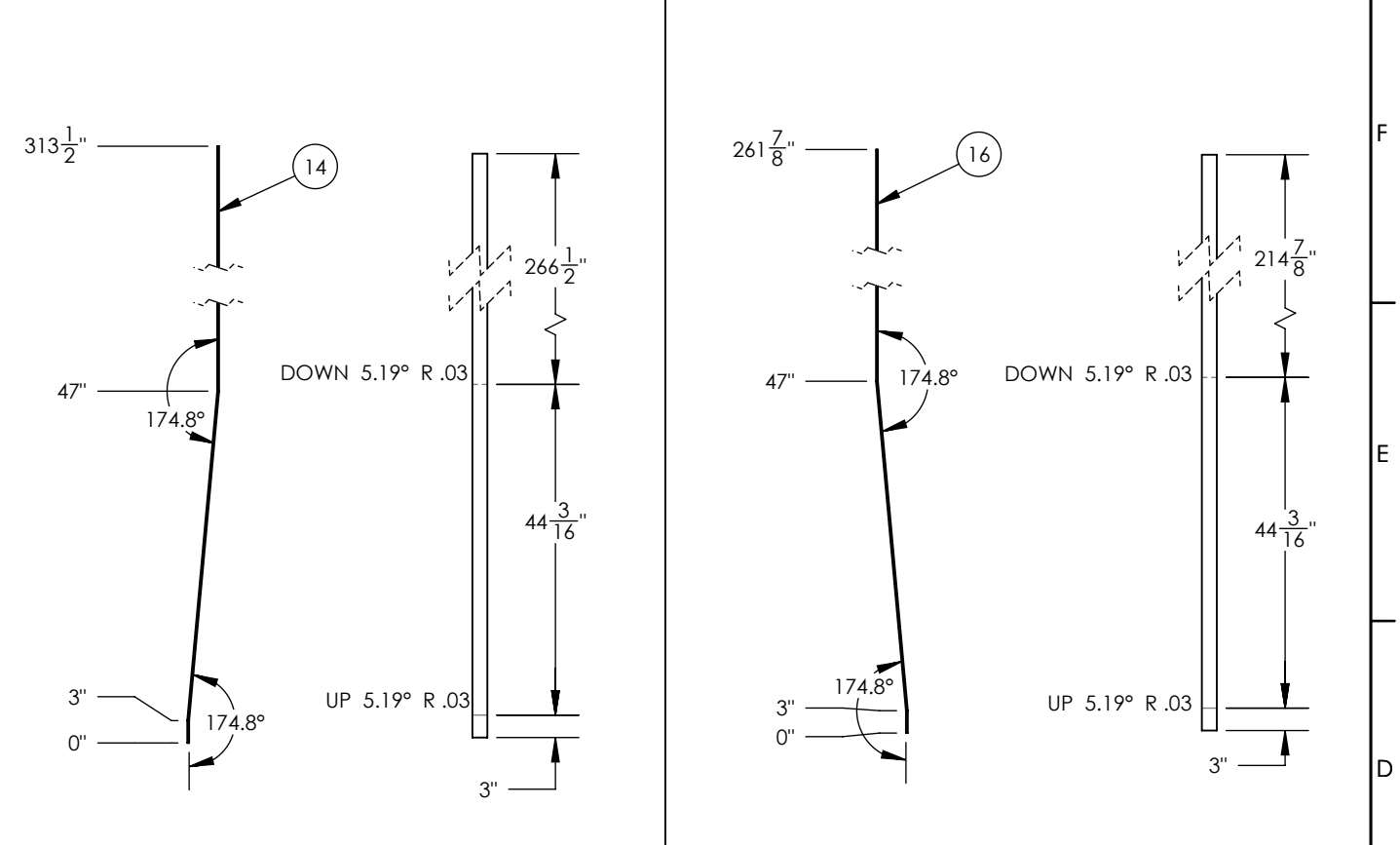
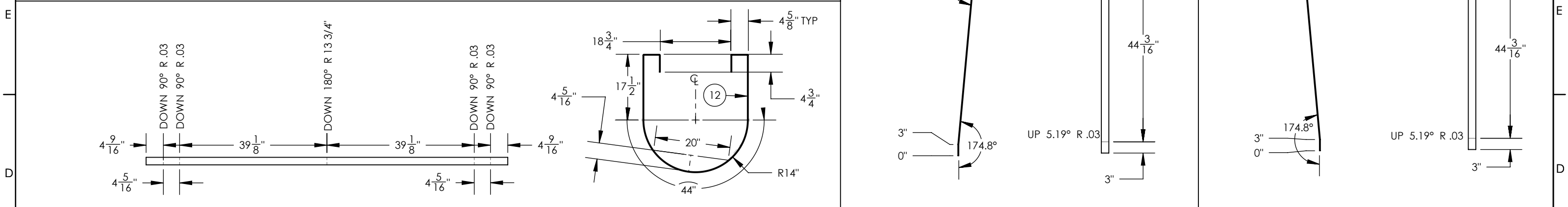
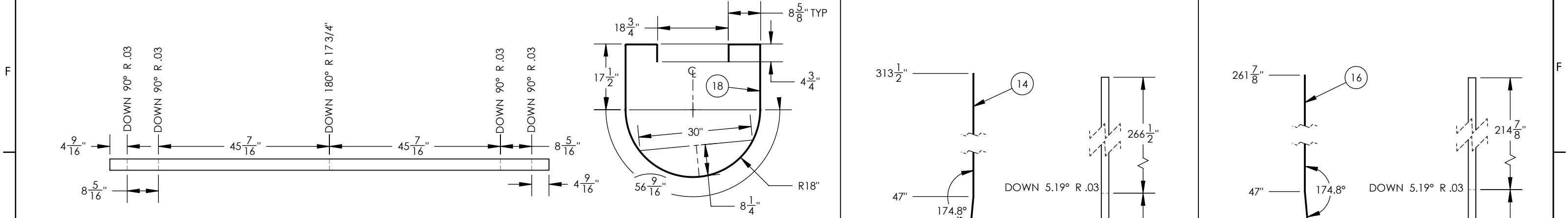
E) SHEET TO BE PRINTED ON 11 x 17 PAPER ONLY

REV	DESCRIPTION	DATE	AUTHOR	SIGNATURE
A	ISSUED FOR INFORMATION	08APR2018	JEB	
B	ISSUED FOR APPROVAL	29MAY2018	JEB	
C	ISSUED FOR CONSTRUCTION	10JUN2018	JEB	
D	AS-BUILT	01JAN2019	JEB	

THE INFORMATION CONTAINED IN THIS DRAWING IS THE SOLE PROPERTY OF CDN CONTROLS. ANY REPRODUCTION IN PART OR AS A WHOLE WITHOUT THE WRITTEN PERMISSION OF CDN IS PROHIBITED.



CUSTOMER: CRESCENT POINT	LADDER STRUCTURE	
WORK ORDER: B3821-CRE-COB		
SCALE: 1:50	DWG NO.: DRW-STR-006_3RD LADDER-PLATFORM	REV NO.: D
		SHEET 6 of 7



GENERAL NOTES: A) UNLESS OTHERWISE SPECIFIED, DIMENSIONS ARE IN INCHES.
 B) TOLERANCES:
 DECIMAL FRACTION ANGULAR
 .X = +/- .1 X = +/- 1°
 .XX = +/- .03 X = +/- .5°
 .XXX = +/- .010
 C) ALL HOLES, SQUARES, SLOTS, CUTOUTS & EDGES TO BE BURR FREE.
 D) ALL WELDS TO BE APPROPRIATE FOR FINAL ASSEMBLY AND PAINT.
 E) SHEET TO BE PRINTED ON 11 x 17 PAPER ONLY

REV	DESCRIPTION	DATE	AUTHOR	SIGNATURE
A	ISSUED FOR INFORMATION	08APR2018	JEB	
B	ISSUED FOR APPROVAL	29MAY2018	JEB	
C	ISSUED FOR CONSTRUCTION	10JUN2018	JEB	
D	AS-BUILT	01JAN2019	JEB	

THE INFORMATION CONTAINED IN THIS DRAWING IS THE SOLE PROPERTY OF CDN CONTROLS. ANY REPRODUCTION IN PART OR AS A WHOLE WITHOUT THE WRITTEN PERMISSION OF CDN IS PROHIBITED.



CUSTOMER: CRESCENT POINT	LADDER DETAILS	
WORK ORDER: B3821-CRE-COB		
SCALE: 1:25	DWG NO.: DRW-STR-006_3RD LADDER-PLATFORM	REV NO.: D
		SHEET 7 of 7