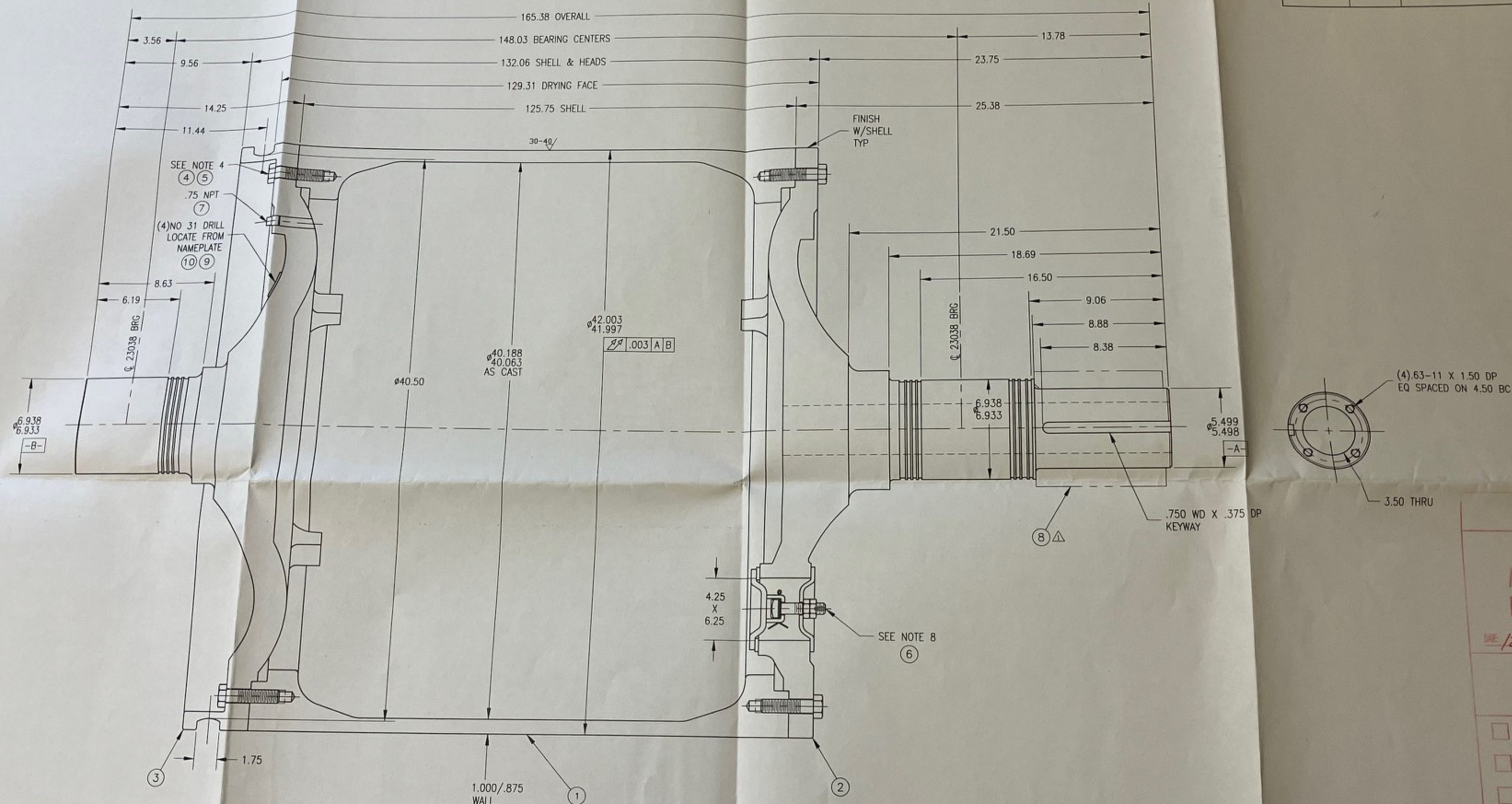


JOB #	DATE	NEXT ASSEMBLY	GROUP
C981799	11-18-98		A
HU00010412	12-7-06		A



NOTES:

- 1- ASSEMBLY TO BE BUILT AND TESTED IN ACCORDANCE WITH CURRENT EDITION AND ADDENDA OF THE ASME CODE SECTION VIII, DIVISION I.
- 2- MAXIMUM OPERATING TEMPERATURE OF 450° F AT MAWP OF 150 PSI. TEST TO 300 PSIG HYDROSTATIC.
- 3- MINIMUM DESIGN METAL TEMPERATURE OF 32° F AT 0 PSI.
- 4- .875-9 BOLTS TO BE LUBRICATED WITH THRED-GARD OR SUITABLE SUBSTITUTE AND TIGHTENED WITH A TORQUE WRENCH TO 450-550 FOOT-LBS. .75-10 SET SCREWS TO BE SILICONED AND TIGHTENED TO APPROXIMATELY 5-10 FOOT-LBS.
- 5- INSTALL HEADS TO SHELL USING PERMATAX SEALANT OR A SUITABLE SUBSTITUTE ON MATING SURFACES.
- 6- DYNAMIC BALANCE TO 1000 FPM (91 RPM) PER ISO 1940 T/C QUALITY GRADE 6.3. MAXIMUM RESIDUAL STATIC UNBALANCE OF 4 LBS AT OD.
- 7- COAT MACHINED DRYER FACE WITH RUST-VETO 342 (BROWN COLOR) OR A SUITABLE SUBSTITUTE.
- 8- HANDHOLE COVER BOLTS MUST BE RETIGHTENED AFTER HEAT HAS BEEN APPLIED TO DRYER.

ITEM	NO.	REQ'D	DWG. # / PART #	DESCRIPTION
10	4		02130001	SCREW, DRIVE, #6 X .31, TYPE U, 304 SST
9	1		000A27540GA	NAMEPLATE, DRYER
8	1		BCB034116	BUSHING, GEAR
7	1		06360000	PLUG, PIPE, SQ HD, .75 NPT, SA-105
6	1		131B00002GA	COVER, HANHOLE, ASSY, 4 X 6
5	8		02530000	SCREW, SKT SET, CUP PT, .75-10 X .75, STL
4	72		02050021	SCREW, HEX HD CAP, .88-9 X 3.25, SA-193-B7
3	1		000D12418GA	HEAD, DRYER, 42 DIA, TS, A-10763, SA278 CL 40
2	1		000D12417GA	HEAD, DRYER, 42 DIA, DS, A-10764, SA-278 CL 40
1	1		000D12416GA	SHELL, DRYER, 42.00 X 125.75, CORED, SA-278 CL 40

STANDARD TOLERANCES					DR. BC	
UNLESS OTHERWISE NOTED					DATE 11/18/98	
FUNCTION	MACHINING	WELDMENT	CASTING	SHEET METAL	CK. SG	DATE 11-24-98
2 PLACE DECIMAL	0" - 24"	± .01	± .08	± .06	± .03	
3 PLACE DECIMAL	OVER 24"	± .01	± .12	± .12	± .06	
ANGULAR	0" - 24"	± .005				
	OVER 24"	± .005				
		± .50	± 1"	± 1"	± 3"	

GLV
FOR APPROVAL
APPROVED DRAWING MUST
BE RETURNED TO GLV BY
12-18-2006

SCHEDULED SHIPMENT OF THIS PRODUCT WILL
BE DELAYED IF APPROVED DRAWING IS
NOT RECEIVED BY THE ABOVE DATE AND TIME.

- ☐ WITHOUT EXCEPTION
☐ AS NOTED
☐ REVISE AND RESUBMIT

SIGNED BY: DATE:

DRAWING REVISION BY: DATE:

GLV / Black Clawson-Kee
PULP AND PAPER MACHINE GROUP U.S.A. L
27 ALLEN ST. HUDSON FALLS, NEW YORK 1
TITLE
DRYER, ASS'Y, 42" DIA X 129.3