



The MP47 is used for Forging, Tool Hardening, Pot Hardening and Melting, and as a Crucible Melter capable of melting non-ferrous metals quickly.

The MP47 furnace is ruggedly constructed and is designed to withstand many years of use. The steel shell is lined with our High Alumina fire bricks and high temperature castable cement.

The burner system has automatic spark ignition and continuous flame monitoring by our Ultra-Violet Combustion Safeguard System for the ultimate in operator safety.

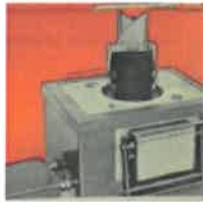
Gas pressure required: 4-6 ounces

Furnished in 115v, 1ph, 60 cycle

**200206 MP47 furnace pkg available**-includes #10 silicon carbide crucible, 10B tong, 5x3 crucible rest, 5" cast iron ladle, 8x10 cast iron pot, S116SE shank



Using the MP47 with a cast iron pot with pouring handle.



Using the MP47 for crucible melting.



The MP47 is a double door forge furnace.

[Ventilation and Hoods](#)—click here

MODEL NUMBER	DOOR SIZE	WORK SPACE	HEARTH SIZE	CRUCIBLE SIZE	STEEL POT SIZE	CAST IRON POT SIZE	O. A. HEIGHT	FLOOR SPACE	BLOWER MOTOR	GAS RATING	GAS SERVICE	GAS VALVE	TEMP. RANGE	AV
MP 47	4 1/2" X 7 1/2"	7" X 17" approx	6" X 12"	No. 10	8" dia. 10" deep approx	8" dia. 10" deep approx	37"	24" X 32"	3/4 HP	300,000 B.T.U./hr	1 1/4" Min.	3/4"	2400F	6



© 2020 [MIFCO - McEnglevan Industrial Furnace Company, Inc.](#)

- [Webmail](#)