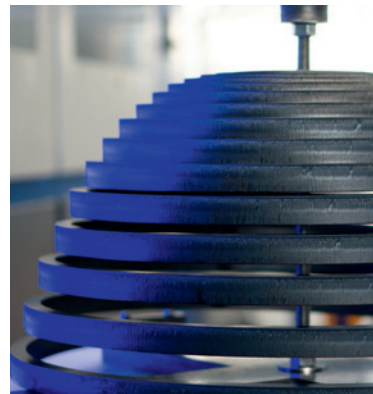


PROCUTTER 2.0 THE BEST – MADE EVEN BETTER

PRECITEC THE SMART WAY TO LASER



PROCUTTER 2.0

up to 8 kW

D G5 QBH



PierceTec (optional)

NA 0.13

M 1.25
M 1.5
M 1.75
M 2.0

up to 15 kW

QBH D LOE FCH-16



PierceTec (optional)

NA 0.13

M 1.5
M 2.0

20 – 30 kW

D LOE FCH-16



PierceTec (optional)

NA 0.13

M 2.0
M 2.5
M 3.0

up to 40 kW

D LOE-T FCH-16



NA 0.18

M 2.1
M 2.4

up to 85 kW

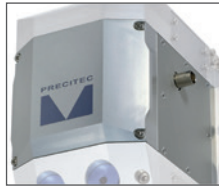
D QP LOE-S FCH-16



NA 0.16

M 3.0

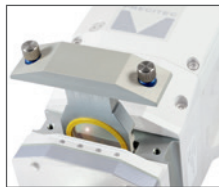
GENERAL EQUIPMENT FEATURES



ADJUSTMENT OF FOCAL POSITION:
fully motorized via machine control



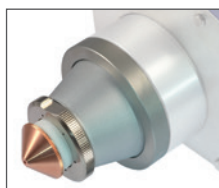
FOCUSING LENS:
X/Y adjustment | no repositioning after changing necessary | additional protective window below focusing lens



PROTECTIVE WINDOW CARTRIDGE :
to protect the optics against dirt and fume | monitoring of attendance and contamination | tool less, easy change



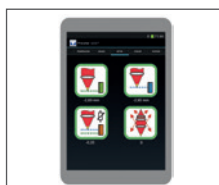
LED BAR:
for immediate display of the current system state (pressure, temperature, drive, contamination)



DISTANCE MEASUREMENT:
fast, precise, drift-free distance measurement at any operating temperatures, even at high accelerations



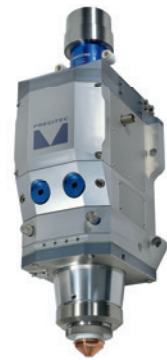
ADDITIONAL WATER COOLING (OPTIONAL):
Improved process stability for 85 kW cutting applications



EXTERNAL INTERFACE:
Output of all sensor data to APP or machine control | readout the values via WLAN | setting of thresholds

PROCUTTER 2.0 – THE BEST – MADE EVEN BETTER

The new ProCutter 2.0 generation impresses with its increased performance and new automation features. Faster, easier, more efficient, more enduring – this is how laser cutting is shaping up in the new generation, due to numerous developments. One of the main reasons for this is the completely redesigned cutting gas flow. In addition, the reliability and power capability has been perfected – up to the maximum laser power of 85 kW. By default, the ability to exchange the nozzles automatically is now provided. The compact design is maintained, together with the extensive sensor technology, which has been specifically expanded to ensure even safer operation.



EFFICIENT - AUTOMATED - PERMANENTLY STABLE POWERFUL CUTTING OPTICS FOR ALL LASER SOURCES UP TO 85 KW

In laser cutting, the trend is surging towards high power, which means that significant advantages in the productivity of the cutting system and significant cost reductions can be achieved. This includes increasing the cutting speed with thinner material thicknesses and cutting very large and thick material of more than 100 mm with an impressive cutting quality.

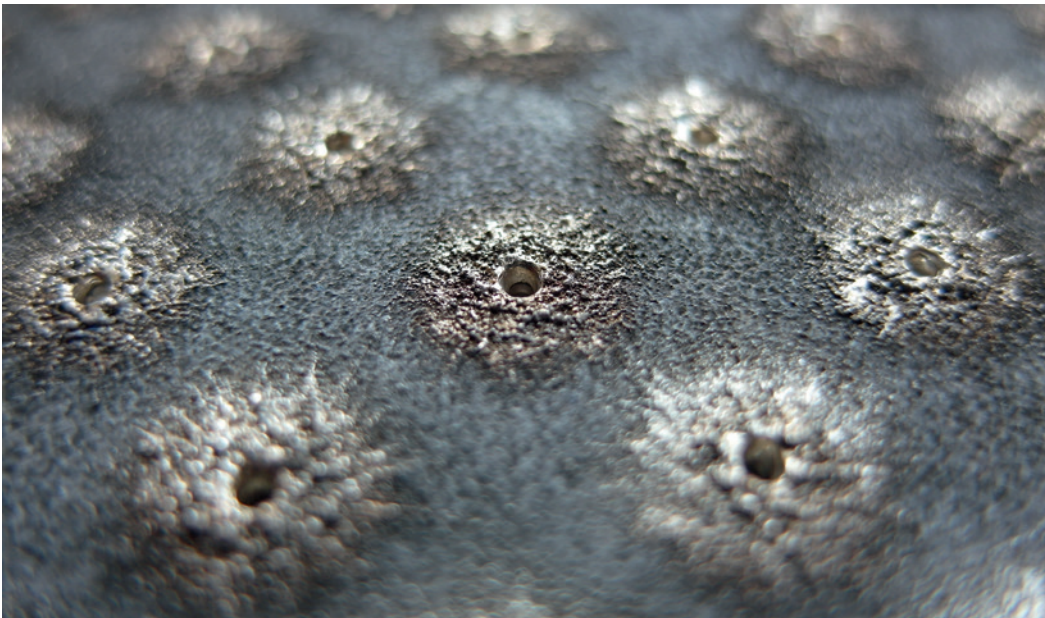
With the higher power, beam quality and consistency from laser to laser, among other things, experience limitations. Precitec has therefore perfected the reliable ProCutter 2.0 for 85 kW laser power. This means that the full power is available for the process. The design of the cutting head has not been changed for this purpose; it continues to be super compact, light-weight and equally suitable for bevel cutting. The cutting head operates automatically and with long-term stability up to 85 kW laser power thanks to its sophisticated cooling concept, integrated sensors and extended adjustment range.



TECHNOLOGY PACKAGE

PIERCETEC – AUTOMATED PIERCING

PierceTec ensures fast, clean and reproducible piercing. The basis for this is an integrated sensor and a full automatic real-time control of the laser power. Typical annoyances are a thing of the past: With PierceTec, the customer enjoys short piercing times even in thick materials, consistent hole quality and high process reliability. In addition, PierceTec protects the usual wear parts – in particular the protective window on the process side and the nozzle. The occurrence of smoke and splashes is minimized. Furthermore, PierceTec monitors the subsequent cutting process and reliably detects interruptions. In short: PierceTec saves cycle time and operation costs – while increasing the performance and quality of the piercing process.



CUSTOMER BENEFIT

- reliable piercing process, even in continuous operation
- high time savings compared to conventional piercing
- increased service life of wearing parts and machine bed
- reliable detection of cut interruption
- » increased operational safety
- » increased productivity
- » lower operation costs
- » lower waste

max. laser power	8 kW	15 – 30 kW	40 kW	85 kW
NA _{max}	0.13	0.13	0.18	0.16
magnification	1.25 / 1.5 / 1.75 / 2.0	1.5 / 2.0 / 2.5 / 3.0	2.1 / 2.4 / 3.0 / 3.6	3.0
dimension (WxD)	96 x 134 mm	96 x 134 mm	96 x 134 mm	96 x 134 mm
axial length	313 mm (M 1.25)	363 mm (M 1.5)	368 mm (M 2.1)	469 mm
weight	6.2 kg (M 1.25)	6.3 kg (M 1.5)	6.5 kg (M 2.1)	6.9 kg
vertical adjustment range	+ 6/- 9 mm (M 1.25) + 9/-13 mm (M 1.5) +12/-18 mm (M 1.75) +15/-20 mm (M 2.0)	+10/-16 mm (M 1.5. 15 kW) +15/-30 mm (M 2.0. 15 kW) +25/-30 mm (M 2.0. 20 kW) +28/-38 mm (M 2.5. 30 kW) +33/-66 mm (M 3.0. 30 kW)	+25/-30 mm (M 2.1) +25/-54 mm (M 2.4) +33/-66 mm (M 3.0) +33/-66 mm (M 3.6)	+45/-91 mm (M 3.0)

The given data was generated for a typical application and may be different given other circumstances. Furthermore misprints, changes and/or innovations may lead to differences in the listed measurements, technical data and features. Therefore all information is non-binding and technical data, measurements as well as features are not guaranteed by information in this product information.

WWW.PRECITEC.COM

WHY PRECITEC STANDS OUT

MADE IN GERMANY. WORLDWIDE SERVICE. DECADES OF EXPERIENCE.

Precision, flexibility and stability – these are our hallmarks and we are recognized for them. The installation base of thousands of systems speaks for itself.

More than 50 years of experience as an innovative market leader in laser welding and cutting point to the highest quality of our products.

Our worldwide presence ensures that you always have a reliable partner at your side. And as a family-owned company, we place particular value on close customer relationships based on trust, reliability and the high level of expertise of our teams.



Precitec GmbH & Co. KG
Draisstraße 1
76571 Gaggenau, Germany

Phone +49 (0)7225 684 0
Fax +49 (0)7225 684 900
E-Mail precitec@precitec.de



PRECITEC