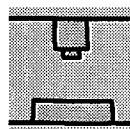
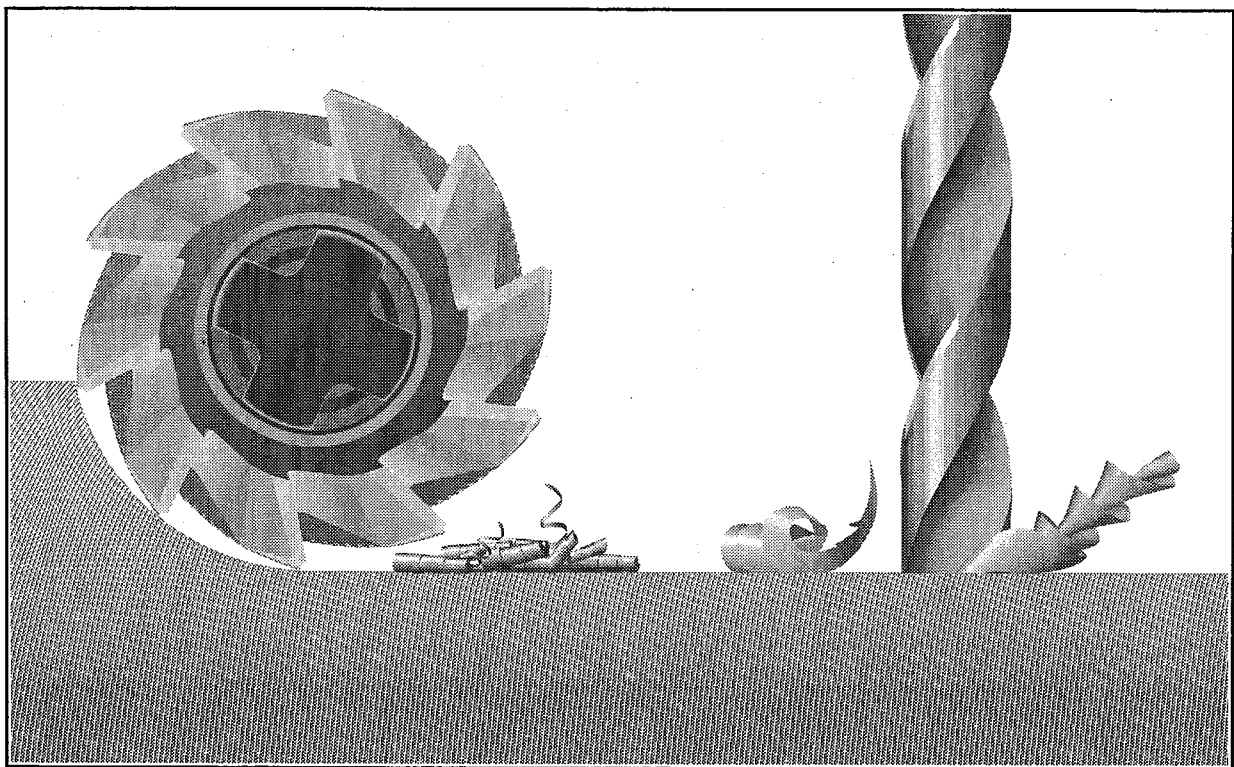


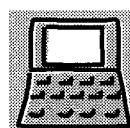
Operator's Manual

# Machine & Control Unit

This folder contains all the information you need to operate your machine.



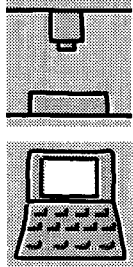
**DMC 103V**



**SINUMERIK 810D**

**SINUMERIK 840D**

**DECKEL MAHO**

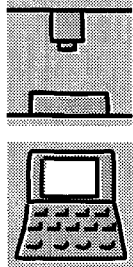


## Machine Manual 1

# Technical Fundamentals

All about technical data, transport, installation, operation and maintenance.

---



## Machine Manual 2

# Attachments & Accessories

All about our range of attachments and accessories you can use on your machine.

---

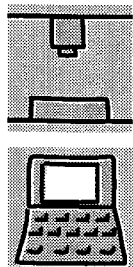


## Control Unit Manual

# Supplement

Supplementary information on the operation of the machine and control unit.

---



## Parts Manual

# Spare Parts Catalogue

This manual will help you to get speedy service when ordering spare and replacement parts.