

MATERIAL SCHEDULE

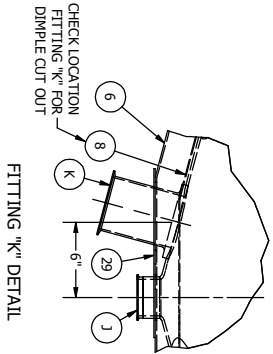
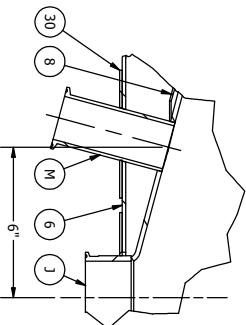
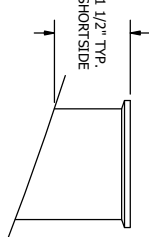
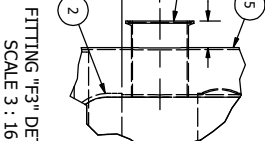
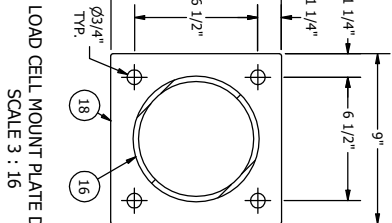
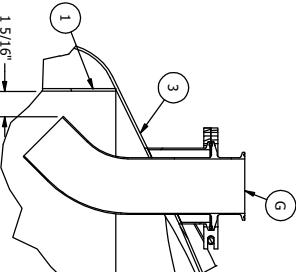
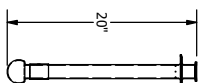
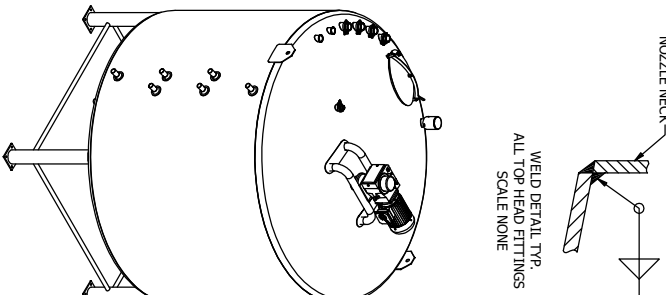
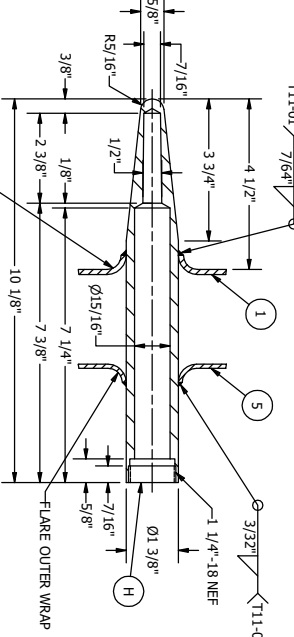
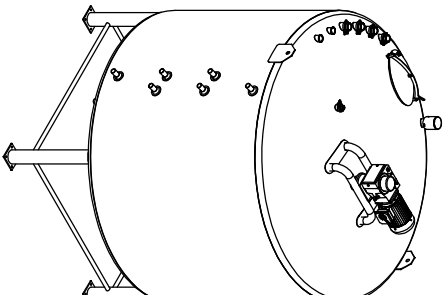
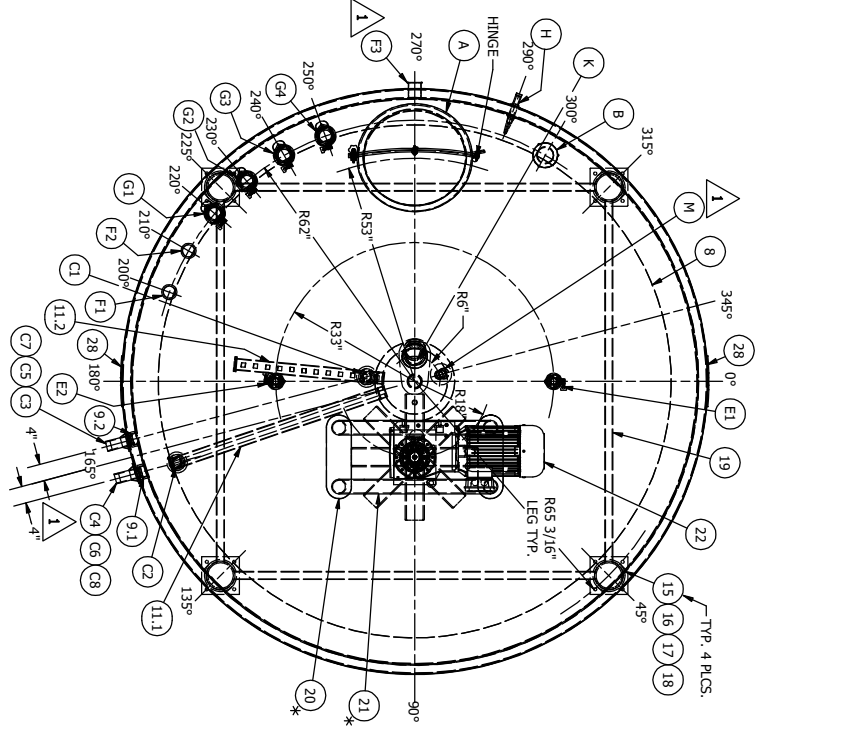
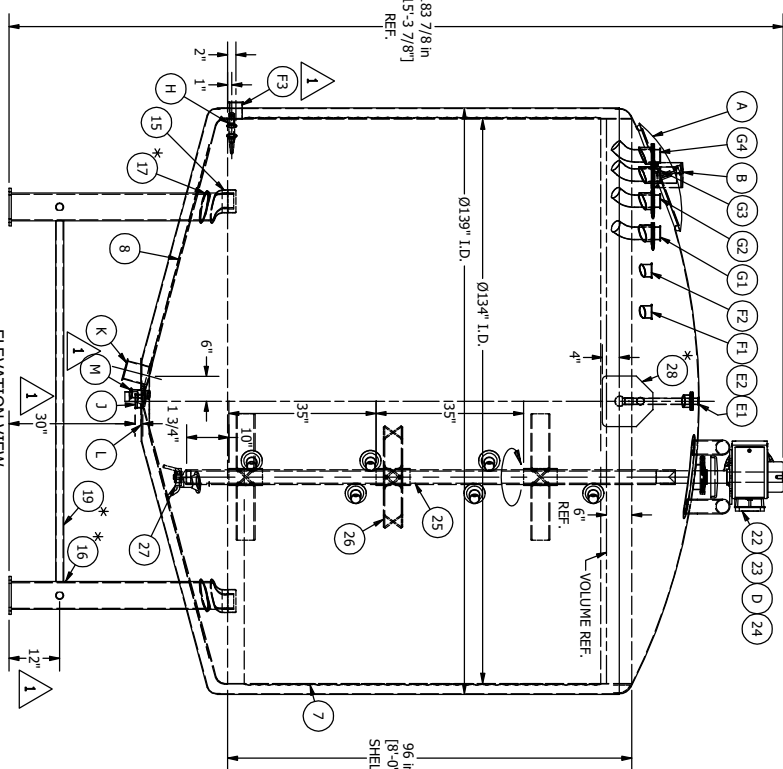
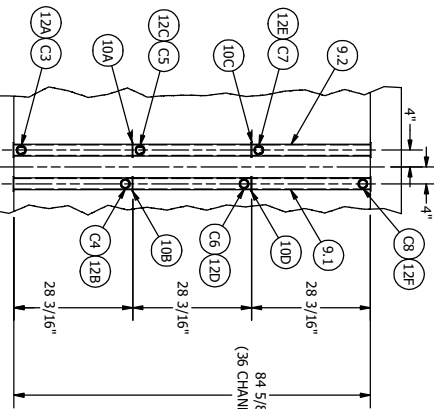
ITEM #	QTY.	SIZE / THICK	MATERIAL	SA #	DESCRIPTION
1	1	10 GA.	316 S.S.	240	INNER SHELL
2	1	7 GA.	316 S.S.	240	INNER BOTTOM HEAD, 15 DEG CONE W/ 2" K.A. & 3/4" S.F.
3	1	10 GA.	316 S.S.	--	TOP HEAD (RBD) W/ 15° DIA., 3" K.A., & 1" S.F. - 19.1510" HEAD DEPTH
4	1	7"	TIV	--	THERMO WOOL INSULATION (SIDES & BOTTOM)
5	1	12 GA.	304 S.S.	--	OUTER WRAP
6	1	12 GA.	304 S.S.	--	OUTER BOTTOM HEAD, 15.00 DEG CONE W/ 2" K.A. & 1" S.F. (APPROX. 19" DIA. FLAT)
7	1	16 GA.	304 S.S.	240	HEAT EXCHANGE SURFACE (SIDE WALL CHANNEL) ~247 SQ. FT.
8	1	14 GA.	304 S.S.	240	HEAT EXCHANGE SURFACE (BOTTOM HEAD DIMPLES) - 2.1/4" X 2.1/4" X 3/8" DIA. ~83 SQ. FT.
9	2	10 GA.	304 S.S.	240	SIDE WALL HEADERS
10	4	3/16" THK.	304 S.S.	240	HEADER BARTLE
11	2	10 GA.	304 S.S.	240	BOTTOM HEAD HEADERS
12	6	2" 11 GA.	304 S.S.	249	INTERVAL H.T.S. WELD SLEEVE
13	2	2" 11 GA.	304 S.S.	249	INTERVAL H.T.S. WELD SLEEVE
14	8	2"	--	--	PERFITE EXPANSION RING & BOOT FOR HIS FITTING
15	4	10 GA.	304 S.S.	--	LEG
16	4	6" SCH. 40	304 S.S.	--	LEG
17	4	12 GA.	304 S.S.	--	LEG
18	4	1/2" THK.	304 S.S.	--	LEG
19	4	1 1/2" SCH. 40	304 S.S.	--	LEG
20	2	10 GA.	304 S.S.	--	LEG
21	1	--	304 S.S.	--	LEG
22	1	20 H.P.	--	--	LEG
23	1	3" RD.	316 S.S.	--	LEG
24	1	10"	NEPRENE	--	LEG
25	1	3" SCH. 80	316 S.S.	--	LEG
26	3	30" DIA.	316 S.S.	--	LEG
27	1	--	--	--	LEG
28	2	1 1/4" THK.	304 S.S.	--	LEG
29	1	12 GA.	304 S.S.	--	LEG
30	1	12 GA.	304 S.S.	--	LEG

NOZZLE SCHEDULE

ITEM #	QTY.	STUB MTL	STUB SA #	FLANGE MTL	FLANGE SA #	SIZE / THICK	RATE	DESCRIPTION
A	1	316 S.S.	--	--	--	24" DIA.	--	MANHOLE ASSEMBLY WITH SUPPORT ARM, HINGE, & INTITUE GASKET
B	1	SCH. 10 316 S.S.	--	--	--	4" X 6"	--	3 1/2" X SCH. 10 PIPE STUB W/ 6" 304 S.S. TWIST PIN MOUNTED BAYONET VENT ASSEMBLY
C	8	SCH. 40 304 S.S.	312	--	--	2"	--	JACKET THREADED PIPE NUTS
D	1	316 S.S.	--	--	--	6" X 3"	--	14 WHP TR-CLAMP FIBRULE W/ SHIRT SEAL & (1) O-RING - (3) SPARE O-RINGS INSTALLED ON SHIRT ABOVE SEAL
E	2	316 S.S.	--	--	--	3"	--	14 WHP TR-CLAMP FIBRULE W/ ECOLAB 99-18-3, 316 S.S. 2 1/2" DIA. SINGLE SPRAY BALL W/ 1 1/2" TR-CLAMP BND (40 GPM AT 25 PSIG)
F	3	316 S.S.	--	--	--	3"	--	14 WHP TR-CLAMP FIBRULE
G	4	316 S.S.	--	316 S.S.	--	4" X 3"	--	14 WHP TR-CLAMP FIBRULE W/ REMOVABLE NO FOAM INLET
H	1	316 S.S.	--	--	--	1 1/4" 18 HRF	--	REORDER WEL (FATOR #289397 OR ANDERSON #41247)
J	1	316 S.S.	--	--	--	3"	--	#14 HPW TR-CLAMP FIBRULE
K	1	316 S.S.	--	--	--	1"	--	ROSHOINT TANK SPUD (1199-0061-0002)
L	1	MTION	--	--	--	1" DIA.	--	VENT / LEAK DETECTOR
M	1	316 S.S.	--	--	--	2"	--	14 WHP TR-CLAMP FIBRULE

MATERIAL SCHEDULE

ITEM #	QTY.	SIZE / THICK	MATERIAL	SA #	DESCRIPTION
1	1	10 GA.	316 S.S.	240	INNER SHELL
2	1	7 GA.	316 S.S.	240	INNER BOTTOM HEAD, 15 DEG CONE W/ 2" K.A. & 3/4" S.F.
3	1	10 GA.	316 S.S.	--	TOP HEAD (RBD) W/ 15° DIA., 3" K.A., & 1" S.F. - 19.1510" HEAD DEPTH
4	1	7"	TIV	--	THERMO WOOL INSULATION (SIDES & BOTTOM)
5	1	12 GA.	304 S.S.	--	OUTER WRAP
6	1	12 GA.	304 S.S.	240	OUTER BOTTOM HEAD, 15.00 DEG CONE W/ 2" K.A. & 1" S.F. (APPROX. 19" DIA. FLAT)
7	1	16 GA.	304 S.S.	240	HEAT EXCHANGE SURFACE (SIDE WALL CHANNEL) ~247 SQ. FT.
8	1	14 GA.	304 S.S.	240	HEAT EXCHANGE SURFACE (BOTTOM HEAD DIMPLES) - 2.1/4" X 2.1/4" X 3/8" DIA. ~83 SQ. FT.
9	2	10 GA.	304 S.S.	240	SIDE WALL HEADERS
10	4	3/16" THK.	304 S.S.	240	HEADER BARTLE
11	2	10 GA.	304 S.S.	240	BOTTOM HEAD HEADERS
12	6	2" 11 GA.	304 S.S.	249	INTERVAL H.T.S. WELD SLEEVE
13	2	2" 11 GA.	304 S.S.	249	INTERVAL H.T.S. WELD SLEEVE
14	8	2"	--	--	PERFITE EXPANSION RING & BOOT FOR HIS FITTING
15	4	10 GA.	304 S.S.	--	LEG
16	4	6" SCH. 40	304 S.S.	--	LEG
17	4	12 GA.	304 S.S.	--	LEG
18	4	1/2" THK.	304 S.S.	--	LEG
19	4	1 1/2" SCH. 40	304 S.S.	--	LEG
20	2	10 GA.	304 S.S.	--	LEG
21	1	--	304 S.S.	--	LEG
22	1	20 H.P.	--	--	LEG
23	1	3" RD.	316 S.S.	--	LEG
24	1	10"	NEPRENE	--	LEG
25	1	3" SCH. 80	316 S.S.	--	LEG
26	3	30" DIA.	316 S.S.	--	LEG
27	1	--	--	--	LEG
28	2	1 1/4" THK.	304 S.S.	--	LEG
29	1	12 GA.	304 S.S.	--	LEG
30	1	12 GA.	304 S.S.	--	LEG

FITTING "K" DETAIL
SCALE 1 : 8FITTING "M" DETAIL
SCALE 1 : 4DETAIL "TYP." ALL T.C. FERRULES
ON TOP HEAD
SCALE NONEFITTING "F3" DETAIL
SCALE 3 : 16LOAD CELL MOUNT PLATE DETAIL
SCALE 3 : 16NO-FOAM DETAIL
SCALE 3 : 16SPRAYBALL DETAIL
SCALE 3 : 32WELD DETAIL "TYP."
ALL TOP HEAD FITTINGS
SCALE NONE#26P397 RECORDING WELL DETAIL
SCALE 3 : 8
SAME AS ANDERSON #41247PLAN VIEW
SCALE 1 : 24ELEVATION VIEW
SCALE 1 : 24HTS DETAIL
SCALE 1 : 24

REV.	DATE	ISSUE	REVISION DESCRIPTION	APPROVED BY
06/06/18	1	DRAWING	OUTLET HEIGHT WAS 24". LEG BRACES WERE AT 9". ADD FITTING "M" & "F3". HTS WAS AT 90°. ADD #201 IN TITLE BLOCK. TOOK -20 OFF	THA

REV.	DATE	ISSUE	REVISION DESCRIPTION	APPROVED BY
06/06/18	1	DRAWING	OUTLET HEIGHT WAS 24". LEG BRACES WERE AT 9". ADD FITTING "M" & "F3". HTS WAS AT 90°. ADD #201 IN TITLE BLOCK. TOOK -20 OFF	THA

REV.	DATE	ISSUE	REVISION DESCRIPTION	APPROVED BY
06/06/18	1	DRAWING	OUTLET HEIGHT WAS 24". LEG BRACES WERE AT 9". ADD FITTING "M" & "F3". HTS WAS AT 90°. ADD #201 IN TITLE BLOCK. TOOK -20 OFF	THA

REV.	DATE	ISSUE	REVISION DESCRIPTION	APPROVED BY
06/06/18	1	DRAWING	OUTLET HEIGHT WAS 24". LEG BRACES WERE AT 9". ADD FITTING "M" & "F3". HTS WAS AT 90°. ADD #201 IN TITLE BLOCK. TOOK -20 OFF	THA

REV.	DATE	ISSUE	REVISION DESCRIPTION	APPROVED BY
06/06/18	1	DRAWING	OUTLET HEIGHT WAS 24". LEG BRACES WERE AT 9". ADD FITTING "M" & "F3". HTS WAS AT 90°. ADD #201 IN TITLE BLOCK. TOOK -20 OFF	THA

REV.	DATE	ISSUE	REVISION DESCRIPTION	APPROVED BY
06/06/18	1	DRAWING	OUTLET HEIGHT WAS 24". LEG BRACES WERE AT 9". ADD FITTING "M" & "F3". HTS WAS AT 90°. ADD #201 IN TITLE BLOCK. TOOK -20 OFF	THA

REV.	DATE	ISSUE	REVISION DESCRIPTION	APPROVED BY
06/06/18	1	DRAWING	OUTLET HEIGHT WAS 24". LEG BRACES WERE AT 9". ADD FITTING "M" & "F3". HTS WAS AT 90°. ADD #201 IN TITLE BLOCK. TOOK -20 OFF	THA

REV.	DATE	ISSUE	REVISION DESCRIPTION	APPROVED BY
06/06/18	1	DRAWING	OUTLET HEIGHT WAS 24". LEG BRACES WERE AT 9". ADD FITTING "M" & "F3". HTS WAS AT 90°. ADD #201 IN TITLE BLOCK. TOOK -20 OFF	THA

REV.	DATE	ISSUE	REVISION DESCRIPTION	APPROVED BY
06/06/18	1	DRAWING	OUTLET HEIGHT WAS 24". LEG BRACES WERE AT 9". ADD FITTING "M" & "F3". HTS WAS AT 90°. ADD #201 IN TITLE BLOCK. TOOK -20 OFF	THA

REV.	DATE	ISSUE	REVISION DESCRIPTION	APPROVED BY
06/06/18	1	DRAWING	OUTLET HEIGHT WAS 24". LEG BRACES WERE AT 9". ADD FITTING "M" & "F3". HTS WAS AT 90°. ADD #201 IN TITLE BLOCK. TOOK -20 OFF	THA