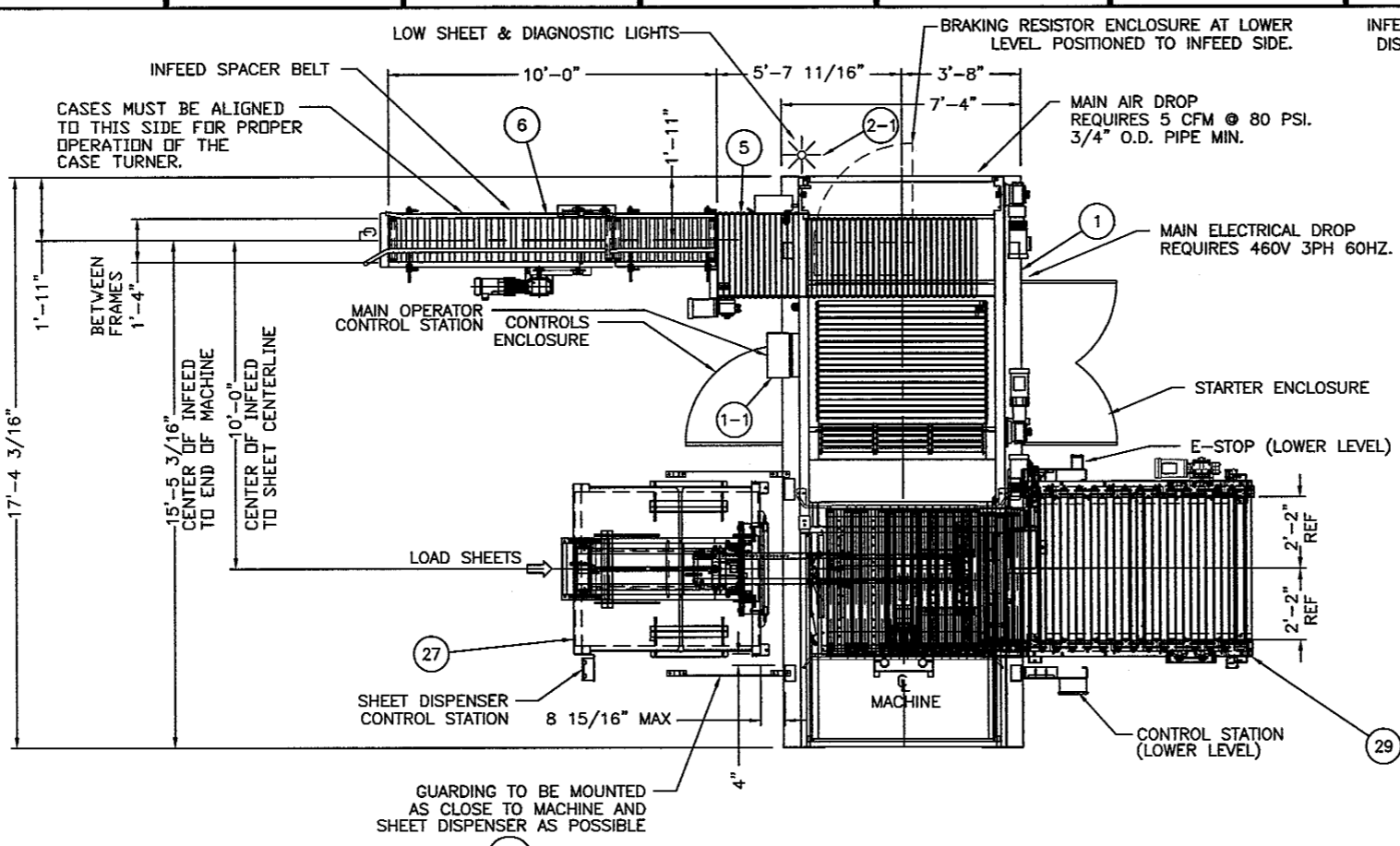


LINE A(6)

A

FOR APPROVAL
FKI LOGISTEX

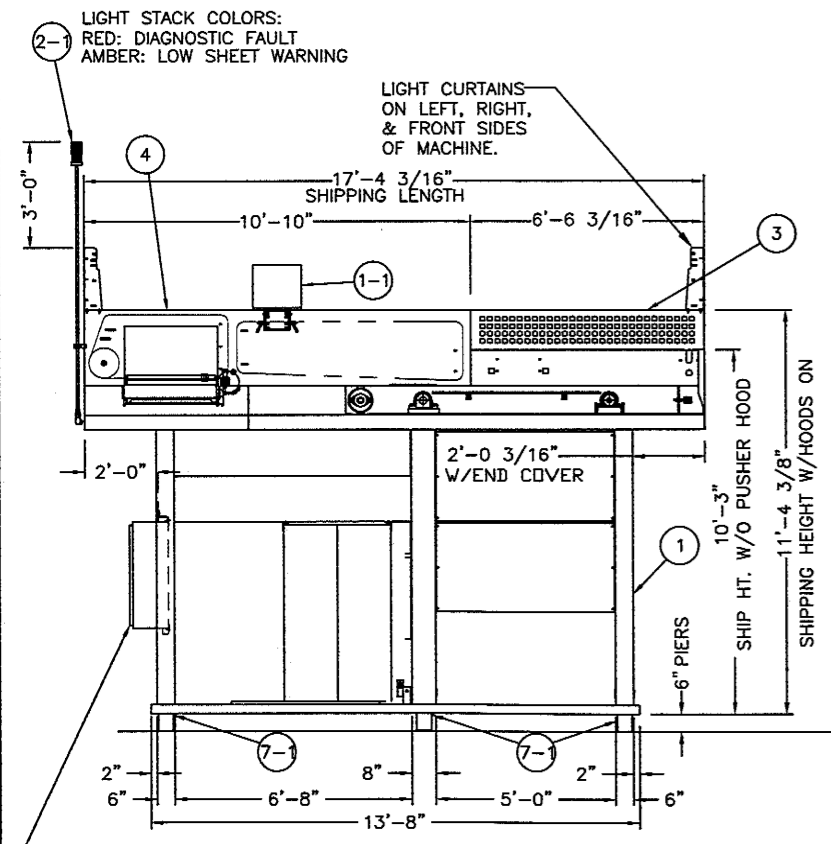
APPROVED AS SHOWN BY _____ DATE _____
APPROVED AS NOTED BY _____ DATE _____



INFEED ELEVATION = 10'-0 1/2"
DISCHARGE ELEVATION = 28"

881 SPECIFICATIONS FOR UNITIZER:
CUSTOMER: DIAGED NORTH AMERICA, INC.
LOCATION: RELAY, MD
MACHINE S.N.: 01-EK228118
CUSTOMER P.D. NO.: 4901195936

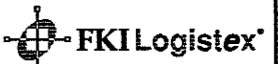
SHEET SIZE: L = 55' W = 46' H = 1/8"
ELECTRICAL: 460 VOLTS 3 PH. 60 HZ.
PNEUMATIC SERVICE: 5 C.F.M. @ 80 P.S.I.G.
PAINT: FKI LOGISTEX GREYS #18001 & #18166
MOTORS: BALDOR
REDUCERS: DODGE (EXCEPT HOIST, WINSMITH)
PALLET DISPENSER: MAX STACK HEIGHT 72" N/A
MAX STACK WEIGHT 1600 LBS. N/A
MAX LOAD HGT FOR PLANS "LR", "LL", "RL", "RR" = 74" UL
MAX LOAD HEIGHT FOR PLANS "LF" & "RF" = N/A
MAX WEIGHT FOR A LAYER OF PRODUCT 400 LBS.
MAX WEIGHT FOR A FULL LOAD OF PRODUCT 3500 LBS.
MAX. REACTIVE LOADING AT ANY PIER 4000 LBS.
MAX. WEIGHT FOR MAIN MACHINE AT SHIPPING 19500 LBS.
MACHINE WILL SHIP WITH PUSHER BAR HOODS ON
CUSTOMER'S RECEIVING DOOR SIZE: "W" = ? X "H" = ?



ENCLOSURE FOR HOIST DRIVE
BRAKING RESISTOR
(MOUNTED TOWARDS INFEED SIDE)

NOTES:
1. BUBBLE NUMBERS RELATE TO MARK NUMBERS ON SHIPPING B/MS.
2. RATES FOR PRODUCT ARE BASED ON CASES BEING DELIVERED TO THE MACHINE BACK TO BACK ON THE INFEED.
3. FORK TRUCK BUMPERS ARE NOT PROVIDED WITH THE MACHINE, PALLET INFEED, OR DISCHARGE CONVEYORS. THEY ARE REQUIRED TO PROTECT THIS EQUIPMENT.

REV		DATE	DESCRIPTION	CUSTOMER		DIAGED NORTH AMERICA, INC. RELAY, MD	
TITLE				PLAN AND ELEVATION SERIES 881 UNITIZER (301S MACHINE) LINE A(6)			
BY		DATE	DESCRIPTION	BY	DATE	SCALE	REV
A		1/28/10	ADD CUSTOMER LINE NUMBER, EQD 228118	EM	1/4/10	3/4" = 1"	1
DRAWING NO.				EKG228K01LD/001			



D