



RoHS



UL-WTDP, CB-TMP Lab.



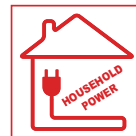
CE

www.gmp.com



QTOPIC-380

Perfect & Easy Operation for
Digital Printing On Demand Solution



Using household power
supply (220~240V)

- Environmentally-friendly Thermalami® system
- Perfect lamination for wide range of Lamination
 - POLYNEX(BOPP base) film
 - NYLONEX(NYLON base) film
 - PERFEX(PET base) film
- Space-effective compact design for office, copy shop & photo shop
- Automatic paper feeding gap control system and automatic burst cutting system
- Film tension control device and decurling device are equipped
- Capacitive touch screen
- Sleeking Solution & MICRONEX lamination with re-winder unit
 - Gloss, Matt, Hologram, Metallic sleeking film
 - MICRONEX(overlay coating) laminating film
- Air compressor included



Patents for QTOPIC-380

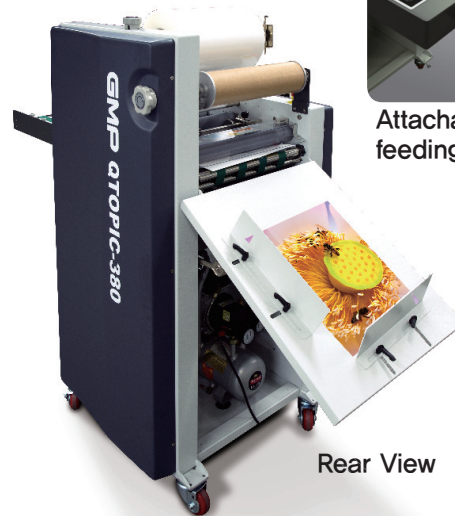
- The method of forming embossing pattern by heating press mold partially on the printing surface laminated with thermal laminate film
- The method of elevating quality of printed matter by after-treatments including gloss and non-gloss processing
- Automatic feeding paper gap control

POD LAMINATOR

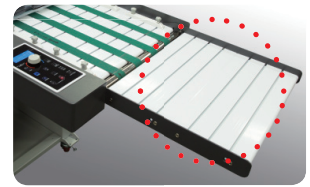
POD LAMINATOR

Features

- Exchangeable/Commonized PCB
- Automatic feeding paper gap control
- Air compressor (with light weight & lower noise) is placed inside the body
- Strengthened laminating pressure for more stepped-up bonding power effecting perfect quality of output
- Ergonomic touch screen for enhancing operator-centric convenient control & quality productivity
- Cantilever type film shaft for easy film loading



Rear View

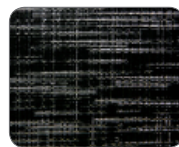


Attachable extension feeding table (option)

Application

- Poster, pop sign, menu
- Book cover & jacket
- Photo graph & album
- Name card
- Gift certificate
- Label (Micronex Lamination)
- Greeting Cards / Year book

Basic patterns of embossing roller (option)



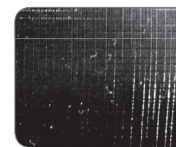
Fine Texture



Leather Texture



Sparkler Texture



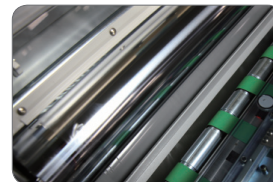
Silky Texture



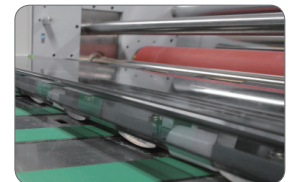
Linen Texture

Model Name	QTOPIC-380	
Dimension (W*L*H, mm)	720*1700*1350mm	
Laminating speed	1.5m/min ~ 10m/min	
Paper size (W*L, mm)	Max.	380*500mm (option: 1200mm)
	Min.	180*210mm
Laminating films	• Single Side: – POLYNEX (20~43mic) – PERFEX (25mic) – NYLONEX (27~44mic) • MICRONEX (6~10mic) : Gloss, Matt, Hologram	
Sleeking	Gloss, Matt, Hologram, Metallic	
Substrate thickness	120~350g/m ²	
Front roller diameter	Top	high glossy chrome Ø100
	Bottom	silicon Ø80
Rear roller diameter	silicon Ø55	
Power requirement	AC 220~240V, 50/60Hz, 12A	
Power consumption	2.8kw	
Warm-up time	5 min.	
Heating system	INFRARED HEATER	
Laminating temp.	MAX.150°C	
Temp. control	Capacitive touch screen	
Speed control	Capacitive touch screen	
Display system	LCD Panel	
Roller pressure	Pneumatic cylinder	
Film core size	77mm (3") / Dual – 58mm, 50mm	
Air compressor	1 HP, 89L/min	
Temp. sensing method	Thermo-couple inserted in the roller shell	

※ GMP reserves the right to change specifications without prior notice.



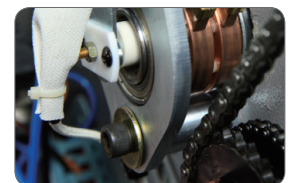
High glossy chrome roller



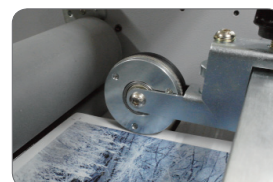
Automatic feeding gap control device



Capacitive touch screen



Thermo-couple inserted in the roller shell for temp. sensing



In-line perforator



Decurling device



Cantilever type film shaft



Air Compressor