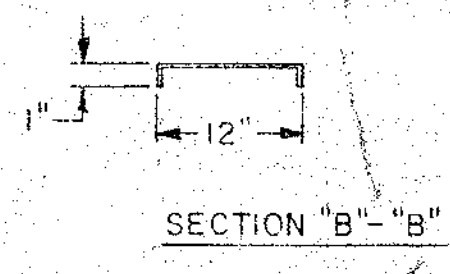
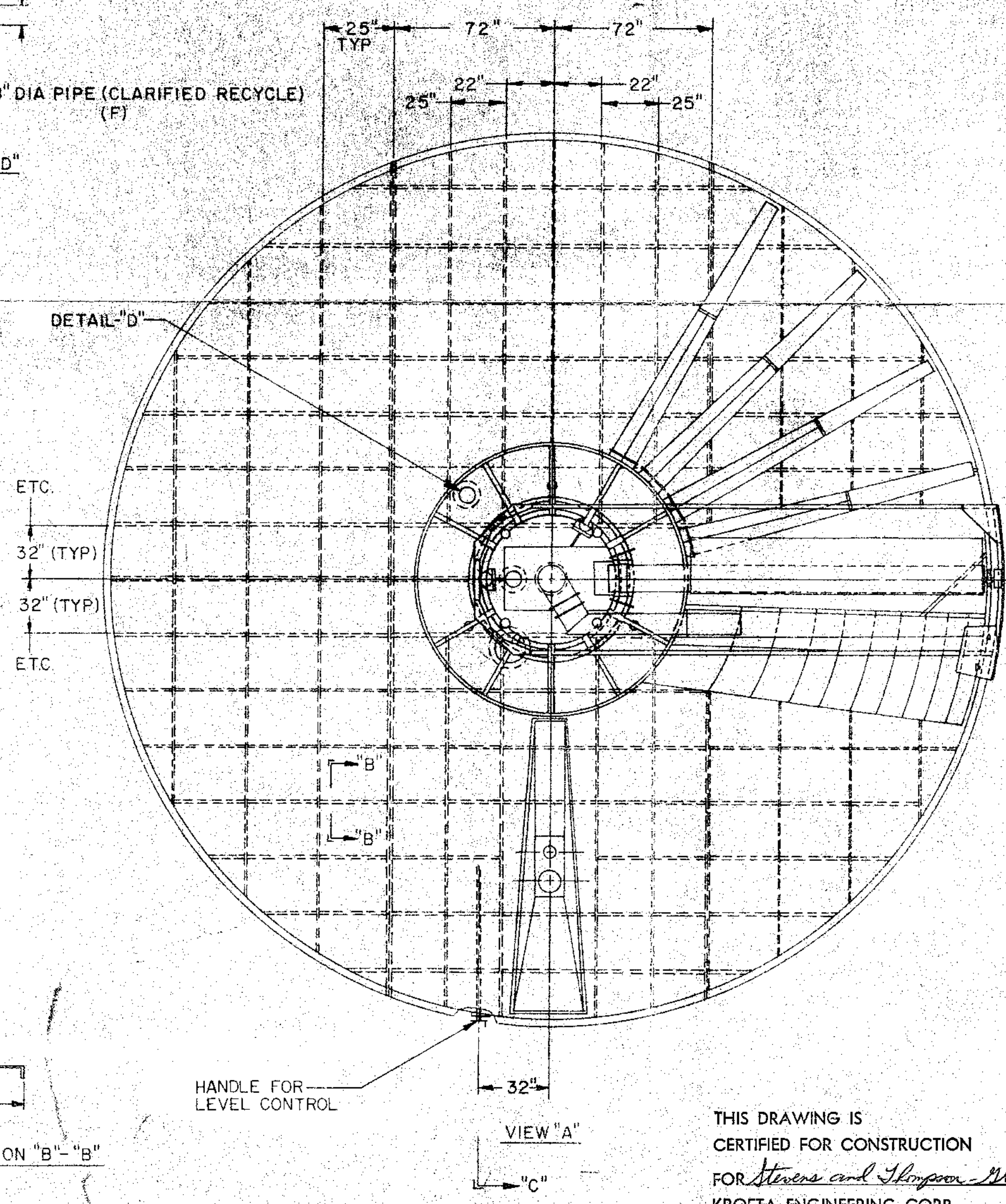


CONNECTION	RAD FROM CENTER
A	0
B	1'-10"
C	3'-4 3/4"
D	10'-1 1/2"
E	11'-9 1/2"
F	4'-8 3/4"

NOTE:
 CONNECTIONS A-D FLANGES 150 lb
 STD DRILLING & E, F DRILLED TAPPED
 PLATE 150 lb STD DRILLING

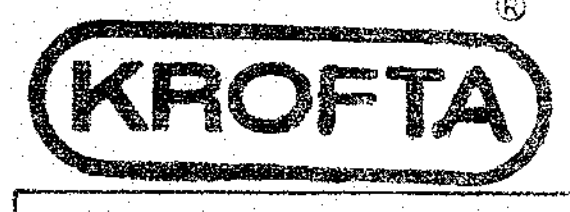


THIS DRAWING IS
 CERTIFIED FOR APPROVAL
 FOR *Stevens and Thompson - Merrick N.Y.*
 KROFTA ENGINEERING CORP.
 BY *Keith R. Howard* DATE *April 26, 1983*

ESTIMATED WEIGHTS
 OPERATING - 94,000 lbs

APPROX. CENTER OF GRAVITY -
 11'-0" R. FROM CENTER

THIS DRAWING IS
 CERTIFIED FOR CONSTRUCTION
 FOR *Stevens and Thompson - Merrick N.Y.*
 KROFTA ENGINEERING CORP.
 BY *Keith R. Howard* DATE *April 26, 1983*



KROFTA SUPRACELL 33 OUTLINE	
SCALE 1/4" = 1'	W. DROSEHN REV. A
30-APRIL-81	DWG. No. U2-SPC 114

This print is the property of the below named company and is loaned solely for the purposes of that corporation and is subject to return upon demand. It is strictly confidential and is loaned with the understanding that neither it nor any information contained therein will be copied, published or transmitted to others.
 Krofta Engineering Corp., 58 Yarus Avenue, Lenox, Massachusetts 01240