

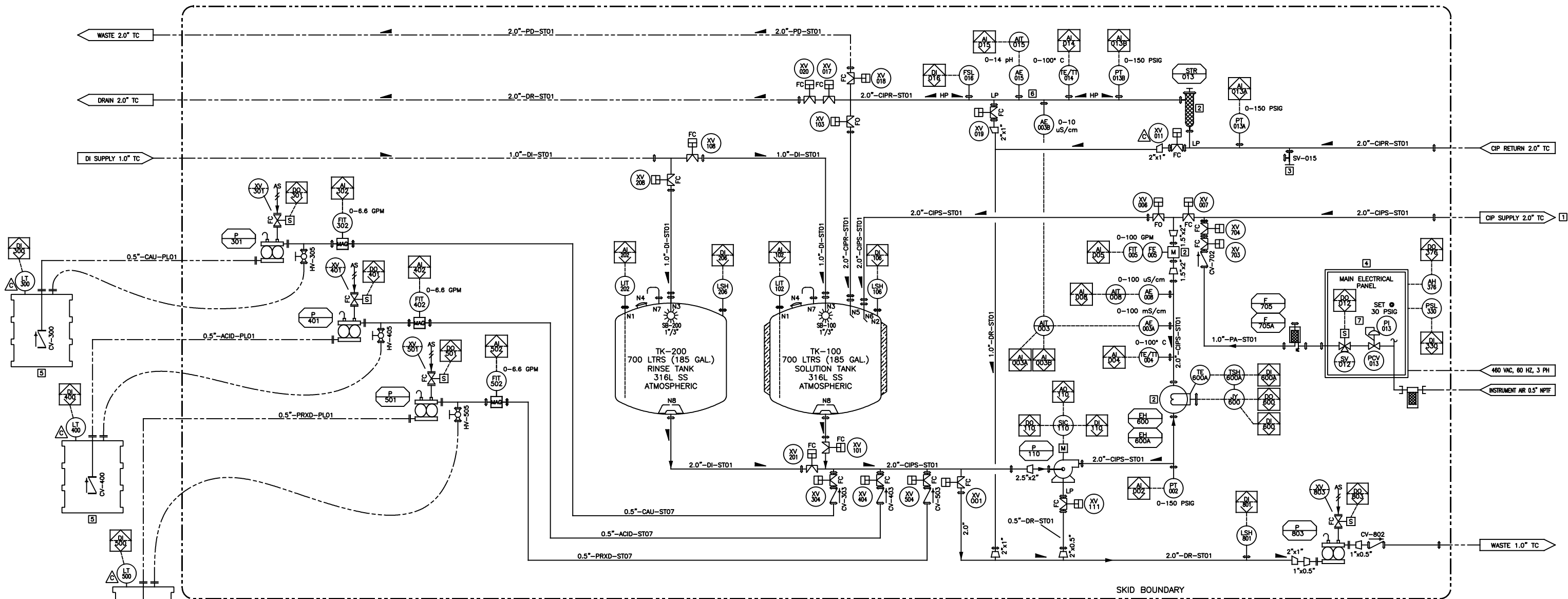
TK-200
RINSE TANK
185 GALLONS WORKING
Ø24" ID x TBD" SIDEWALL
NON-INSULATED
316L SS WETTED
304 SS NON-WETTED
ATMOSPHERIC NON-ASME

TK-100
SOLUTION TANK
200 GALLONS WORKING
Ø24" ID x TBD" SIDEWALL
2" INSULATED - SIDEWALL
316L SS WETTED
304 SS NON-WETTED
ATMOSPHERIC NON-ASME

P-110
CIP SUPPLY PUMP
190mm IMPELLER
60 GPM @ 93 PSI
316L SS
15 HP, 3500 RPM
480 VAC, 3 PH, 60 HZ
WASH DOWN PREM. EFF.
MOTOR

FH-600
CIP SUPPLY HEATER
ELECTRIC
30 KW
316L SS WETTED
460 VAC, 3 PH, 60 HZ

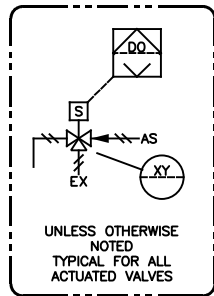
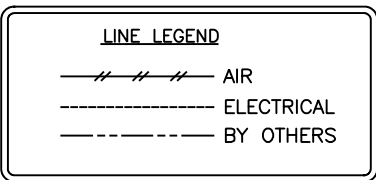
F-705
PROCESS AIR FILTER
1 ROUND X 10" HIGH
0.2 MICRON ELEMENT
T-STYLE
316L SS
RATED FOR 150 PSIG @ 350° F



LINE SPECIFICATIONS:
ST01: TUBING, 25 Ra ID MAX., 32 Ra OD, 316L SS
ST07: TUBING, MILL FINISH, 316 SS
PL01: POLYETHYLENE TUBING

- GENERAL NOTES:**
- REFERENCE SMI DRAWINGS & DOCUMENTS:
- 259213 FOR CIP SYSTEM G.A.
- 837407 CIP SYSTEM EXCEL SPREADSHEET FOR MECHANICAL BILL OF MATERIAL
 - ALL SANITARY WELDS ARE TO BE ORBITAL WELD WHERE PRACTICAL.
 - SPOOL PIECES IN SANITARY HORIZONTAL LINES ARE NOT TO BE LESS THAN THE TUBE SIZE ITSELF.
 - THE FOLLOWING ARE REQUIRED:
- WELD DOCUMENTATION
- WELD LOG
- WELD MAP
- MATERIAL CERTS FOR WETTED SURFACES
- TANK SURFACE FINISH TESTING & DRAINABILITY CERTIFICATE
- PASSIVATION CERTIFICATE
 - FRAME IS CONSTRUCTED OF 304 SS BOX TUBING WITH WELDS DISCOLORED.
 - PROCESS LINES TO BE PITCHED 1/8" PER FOOT MINIMUM (REF. SLOPE MAP FOR PITCH DIRECTION).
 - PIPING & CONDUIT HANGERS TO BE 2-PIECE HEXAGON WITH POLY INSERT.
 - RIGID & FLEXIBLE CONDUIT TO BE GALVANIZED STEEL WITH PVC COATING OR JACKET. LOW VOLTAGE DEVICES TO BE INSTALLED WITH FLEXIBLE CORD.
 - PNEUMATICS TO BE RUN IN 1/4" POLYETHYLENE TUBING INSIDE SS TUBING TO SS JUNCTION BOXES, THRU POLY PUSH-TO-CONNECT BULKHEADS TO DEVICES IN INDIVIDUAL BLUE-COLORED POLYETHYLENE TUBING.
 - GASKET MATERIAL TO BE TUF-FLEX WITH SINGLE-HINGE CLAMPS.
 - APPROXIMATE WEIGHTS: EMPTY = 2,865 LBS
OPERATING = 5,950 LBS

- P&ID NOTES:**
- CIP SUPPLY AT SKID BOUNDARY IS TBD PSIG AT 60 GPM.
 - INSTALL IN THE VERTICAL.
 - SAMPLE PORT.
 - SEE ELECTRICAL DRAWINGS FOR PANEL DETAILS.
 - PROVIDED BY OTHERS.
 - TRAP TO KEEP INSTRUMENTS FLOODED.
 - PNEUMATICS COVER.



UTILITY REQUIREMENTS				
↓ DRAIN	90 GPM	80 °C		
IA INSTRUMENT AIR	35 SCFM	100 PSIG		
DI DEIONIZED WATER SUPPLY	20 GPM**	55 PSIG	20 °C	
ES ELECTRICAL SUPPLY	480 VAC	100 AMP	60 HZ 3Ø	
CHEMICAL TYPE		*		
* INFORMATION NOT AVAILABLE				
** ONE TANK AT A TIME ASSUMED.				

THIS DIAGRAM IS INTENDED TO EXPRESS GENERAL FEATURES OF THE SUBJECT EQUIPMENT AND THE RELATIONSHIP OF ITS INSTRUMENTS. PHYSICAL DETAILS SUCH AS THE ORIENTATION OF THE EQUIPMENT, PORT LOCATIONS ON TANKS AND ELEVATION ARE EXAMPLES OF INFORMATION BEYOND THE SCOPE OF THIS DOCUMENT. PLEASE REFER TO THE APPROPRIATE ASSEMBLY DRAWING OF THE SUBJECT EQUIPMENT FOR INFORMATION REGARDING THESE DETAILS.

W.O. _____
NO. REQD. _____

SANI-MATIC
SILA NANOTECHNOLOGIES
92645
P&ID, 2-TANK CIP SYSTEM

DATE: 16FEB18
SCALE: N.T.S.
REV: C

837407

Page 1 of 1

REV	DESCRIPTION	DATE	BY
C	UPDATED BOM	04APR18	BWZ
B	PER CHG-92645-001B	27FEB18	CEK
A	FOR CUSTOMER APPROVAL	16FEB18	CEK