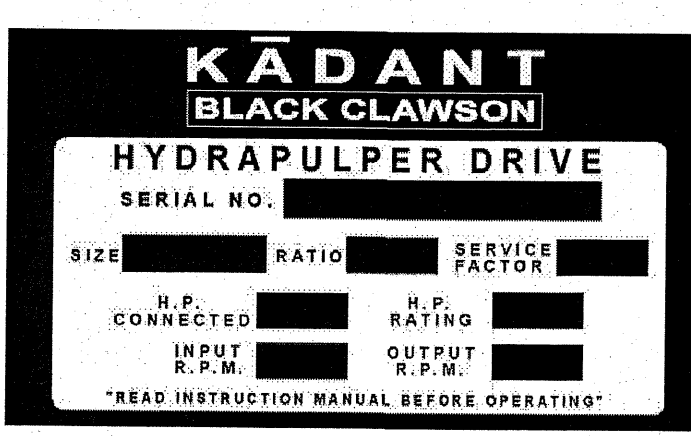


TO BE PREPARED FOR:
LONG TERM STORAGE
EXPORT PACKING

SPECIAL PAINT: IPC INTEGRAD 345
COLOR: PASTEL BLUE (RAL 5024)
EXTRA FT100 (3/4" NPT) AND WATER
CONTROL VALVE (2x 1" NPT PORTS)
SHIPPED LOOSE FOR WATER SIDE

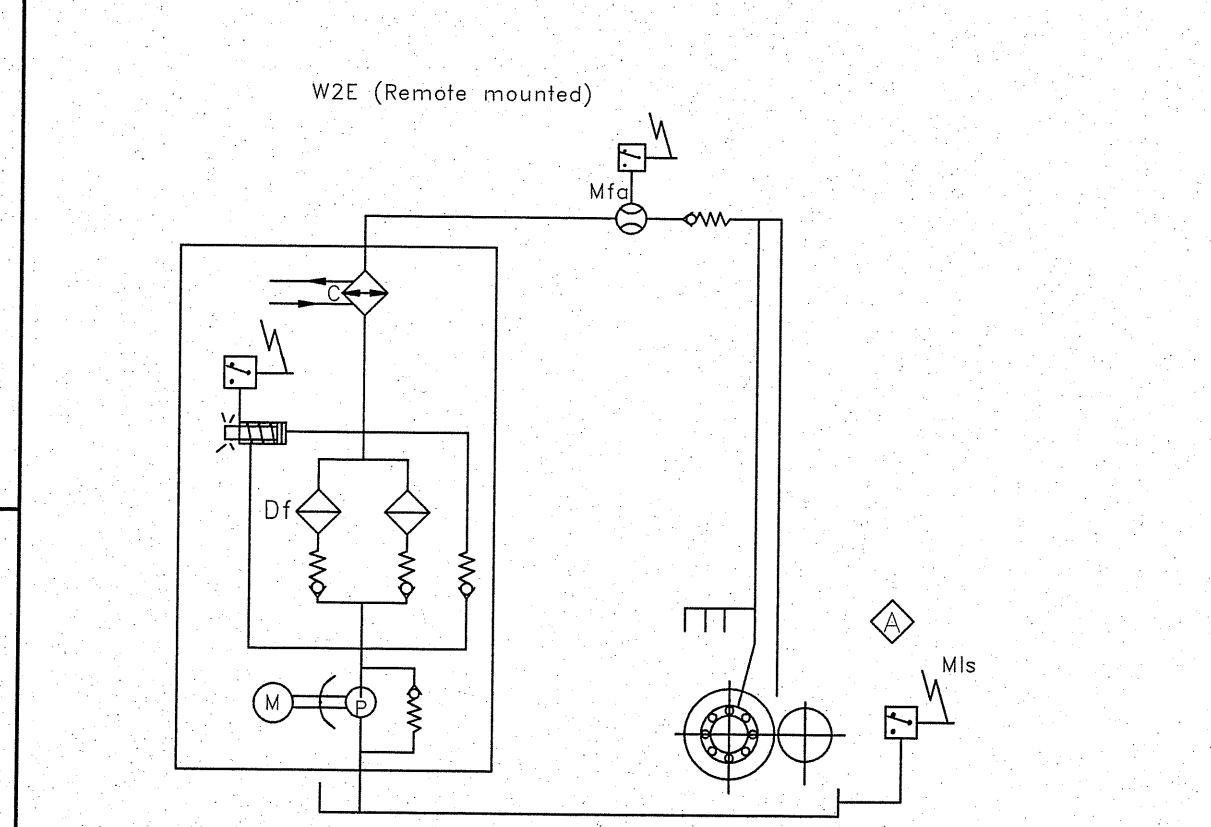
TAG: QVRG2-CUN-10
KBC P/N 6009982
KBC PO# 754043



CERTIFIED FOR KADANT BLACK CLAWSON INC
CUSTOMER ORDER VOHZA051-001
APPROX. DRIVE PKG. WT. _____ LBS.
S.F. BASED ON 700 MTR HP
CERTIFIED BY: LUKE DUNTON
DATE: 1/23/2017

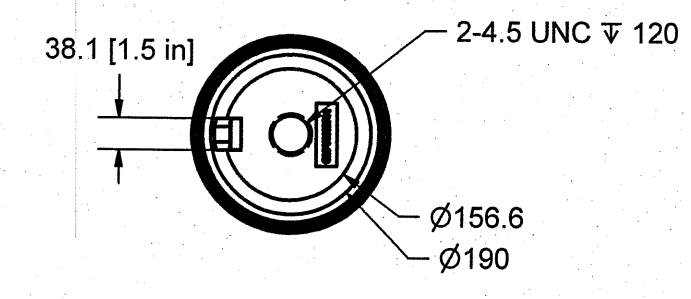
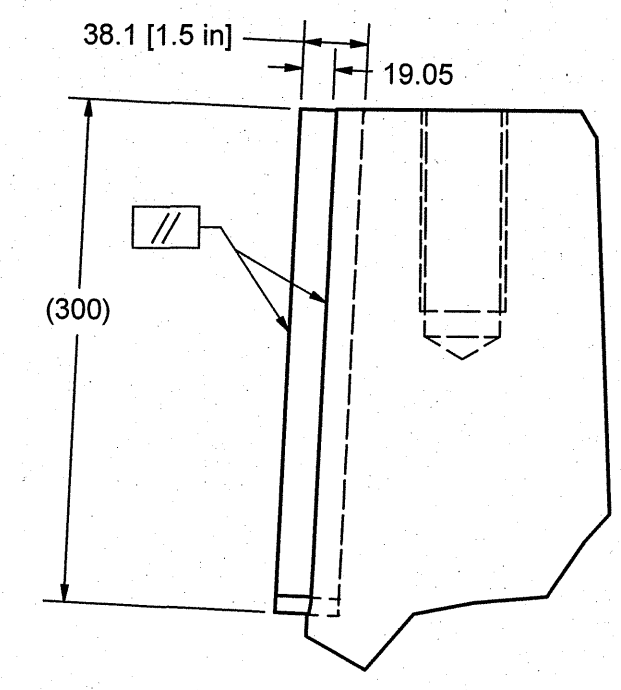
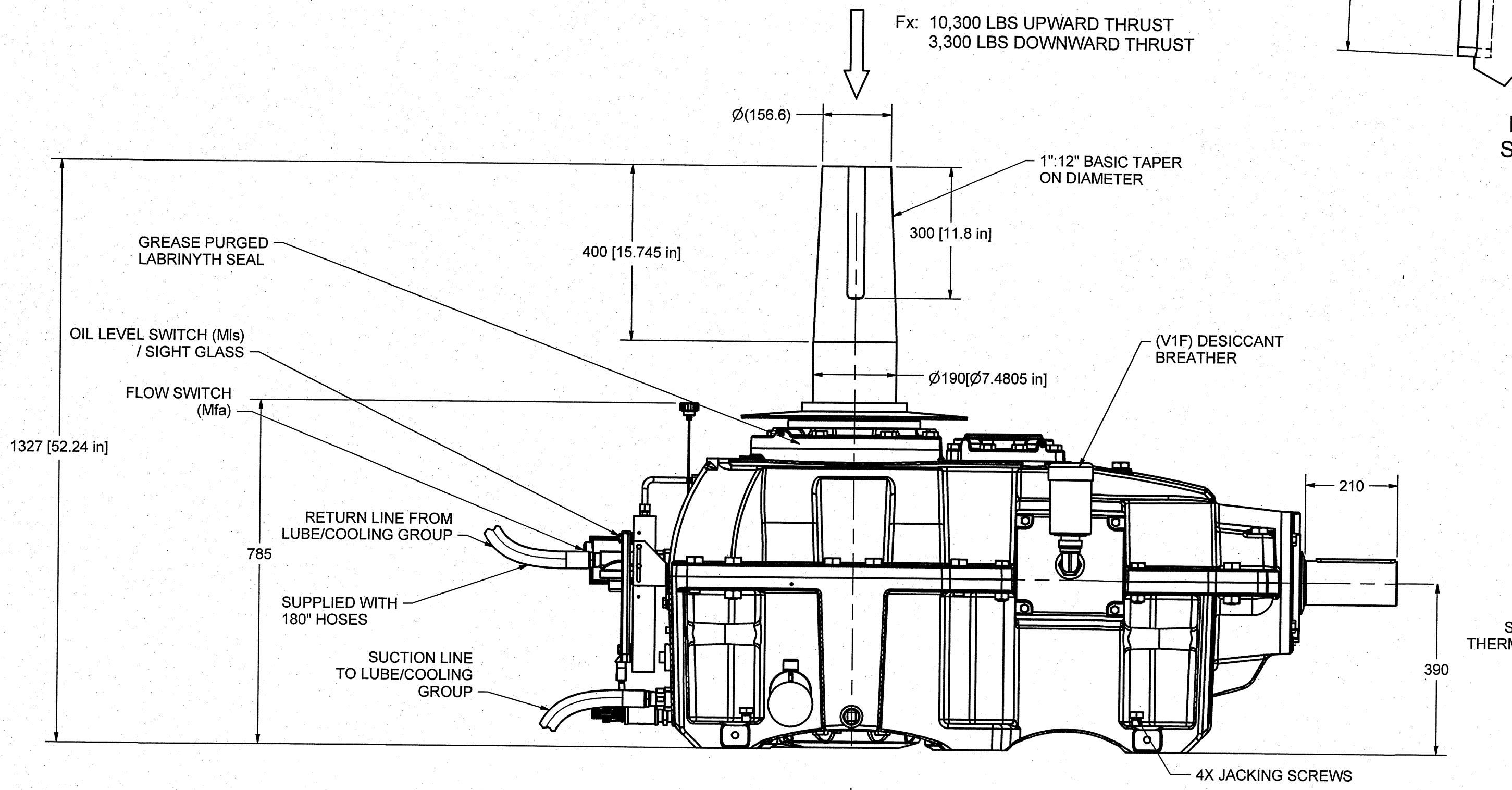
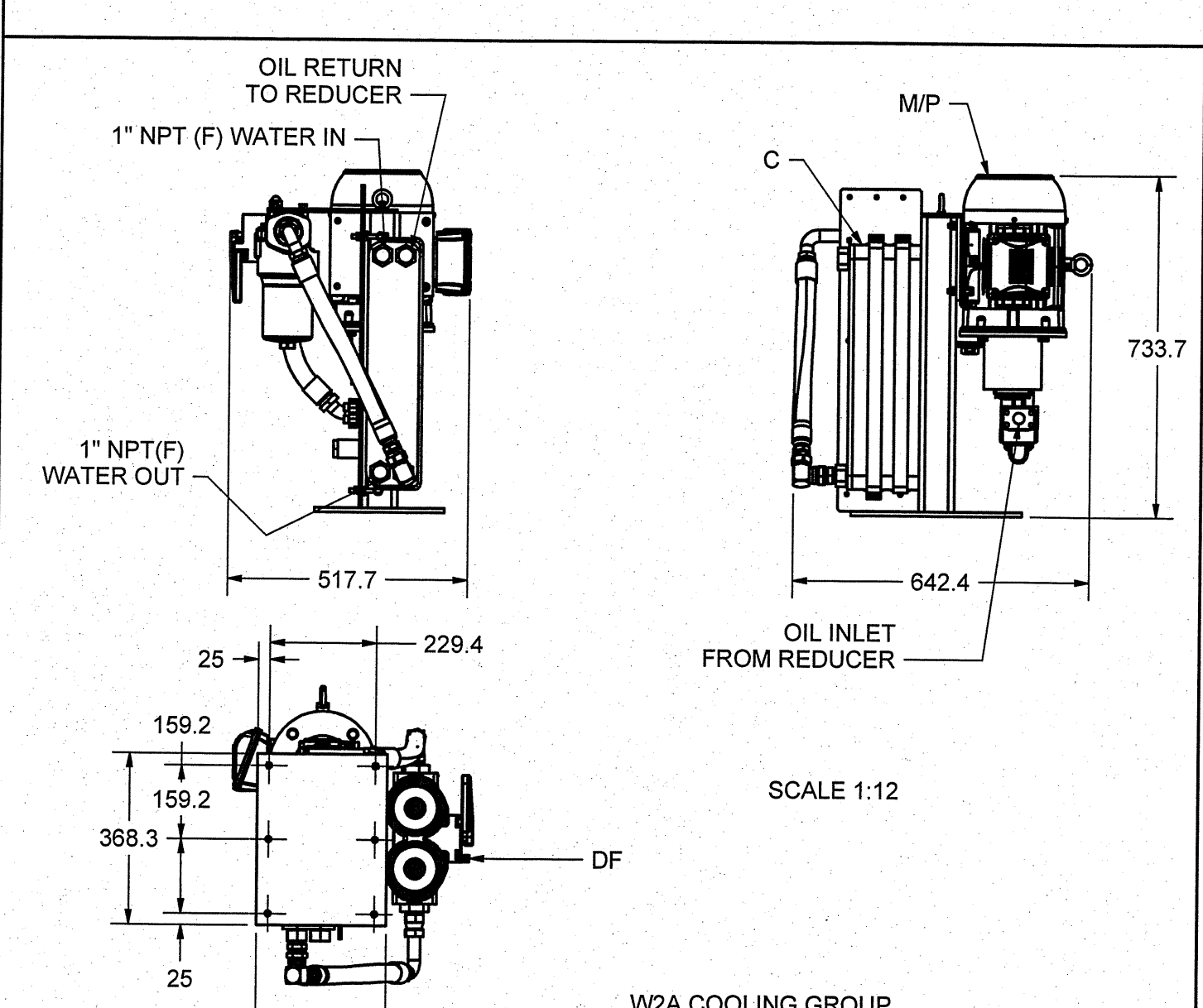
Hansen TRANSMISSIONS		Patented: US5680793, EP0648317, IN182162, JP2860164, KR187555, FI	
TYPE: QVRG2-CUN-10			
N ^o	1720hp/628,000in-lbs	SF	2.5
Ratio	10.359	m	1700KG
min ⁻¹	1785 / 172	RPM	VG 150 32°-86°F
			VG 220 150°-122°F
			105 L
Grease		Nipples	

REVISION			
REV	DESCRIPTION	BY	APPROVAL DATE

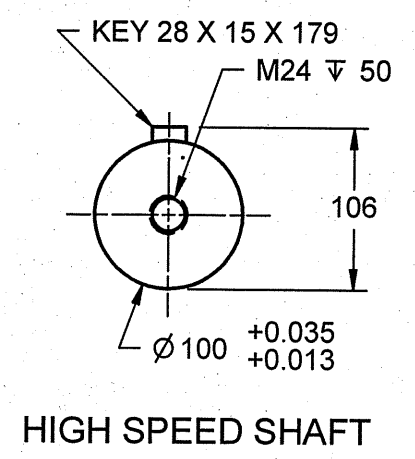
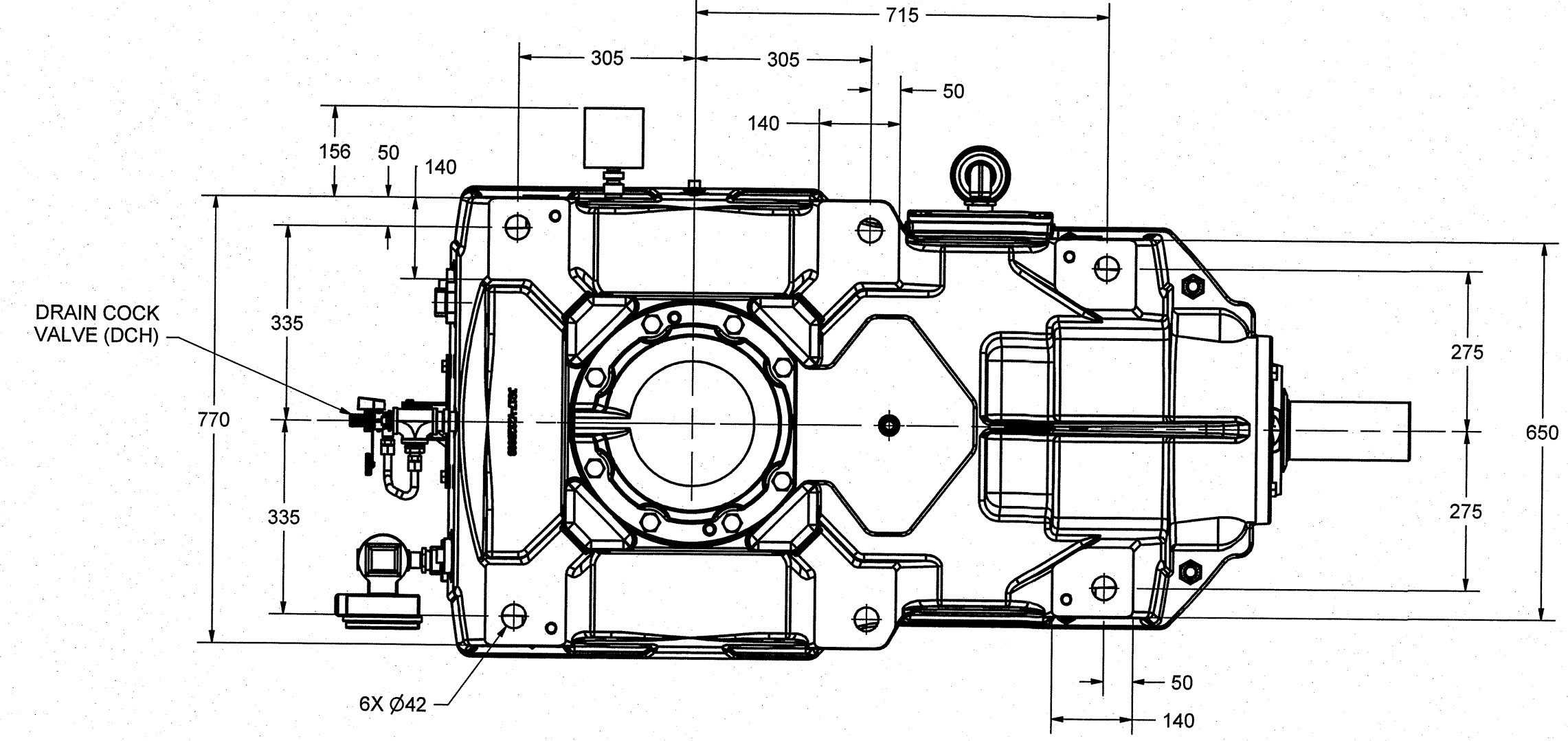
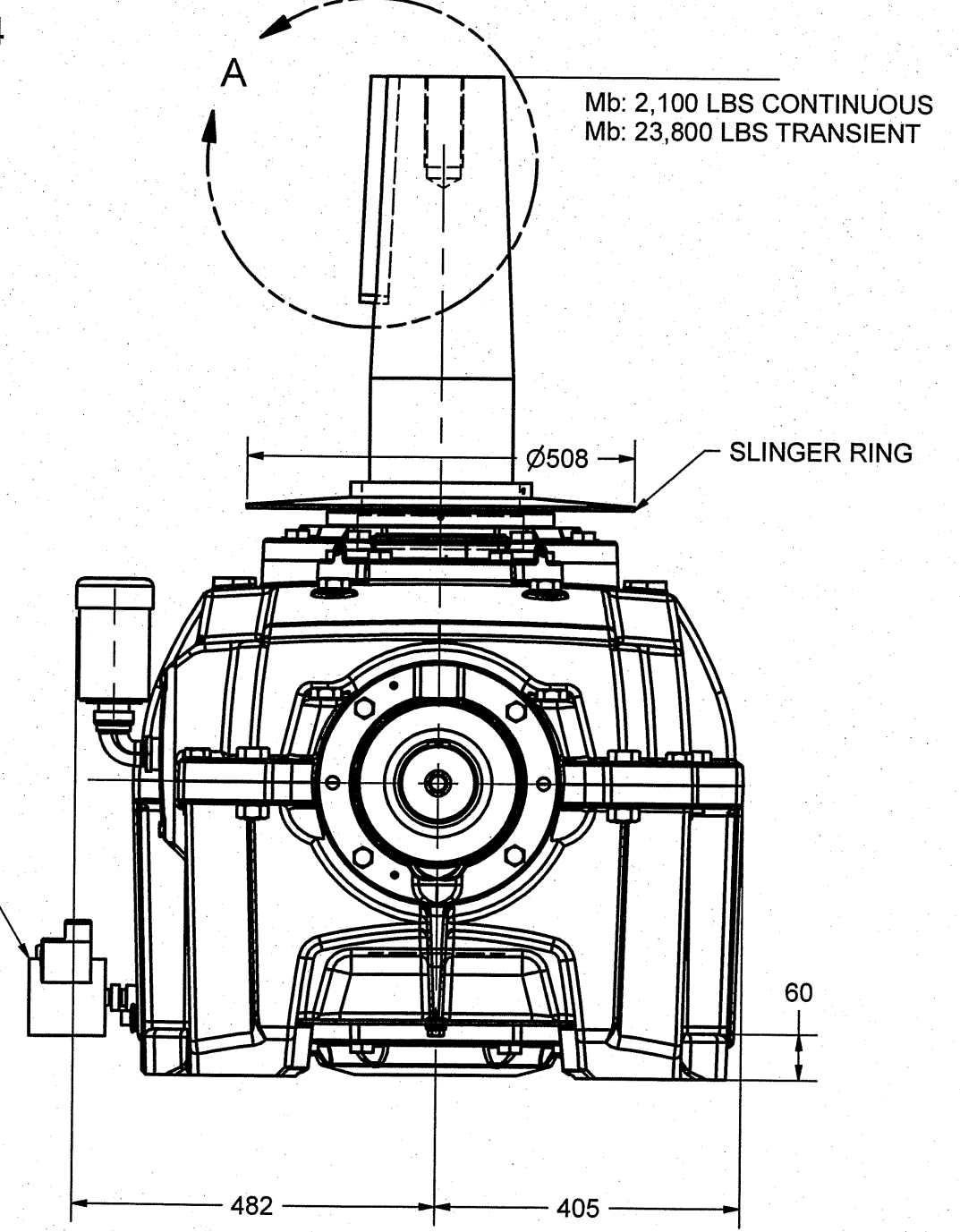


- M/P - Motor/pump "Hydac" MPG-KF25-RF2-D15/S/184TC/2.0-6/230-460(part of cooling group)
2hp - 460V/480V-3P-60hz-TEFC
1200 RPM
- DF - Filter "Hydac" FLND400DDF (10micron) (part of cooling group)
Electronic indicator
3A Max at 24V
- C - Heat Exchanger "Hydac" 615-60 (part of cooling group)
Water temp. 100°F max, 435 psi max
Min water flow rate reqd: 1 gpm
- Mfa - Flow switch "UNIVERSAL" - TM 4.03-e
HANSEN No: 259-F09200DR
-Set point: 5 gal/min
- Mls - Oil level switch / sight glass "Hydac"
HANSEN No: HAN-HYD3112302Q01US
-MAX: 200mA AND 50V (AC or DC)

LUBRICATION SCHEMATIC



Mb: 2,100 LBS CONTINUOUS
Mb: 23,800 LBS TRANSIENT



NOTE: LOW SPEED SHAFT AXIAL MOVEMENT: 0.008 in MAX
RADIAL MOVEMENT: 0.080 in MAX
SF UPON TRANSIENT LOAD IS 1.64

THE PURCHASER IS RESPONSIBLE FOR THE PROVISION OF SAFETY GUARDS AND THE CORRECT INSTALLATION OF ALL EQUIPMENT.

YOUR RESPONSE TO THIS APPROVAL DRAWING IS DUE NO LATER THAN 2/7/2017

APPROVAL DRAWING
Your written confirmation to this approval drawing must be received no later than the indicated due date. Please complete the "Approval Drawing" box located in the bottom portion of the drawing and return to:

This order is primarily an HCLD in our custom pending receipt of the signed approval drawing. HCLD status means that the order is not yet released to production and we require your signed approval. Please contact your salesman if you have any questions.

APPROVED
 APPROVED AS NOTED
 REJECTED WITH COMMENTS

Reviewer: _____

Date: 754043

PO# VOHZA051-001

Submitted by: MB

Submit Date: 01/24/2017

Sumitomo Drive Technologies		Sumitomo Machinery Corporation of America 4200 HOLLAND BOULEVARD, CHESAPEAKE, VA 23323 757-485-3355	
DIMENSIONS ARE IN MILLIMETERS			
THIRD ANGLE REFER TO ENGINEERING SPEC. 8000-10-04 FOR DIMENSIONING NOTES AND TOLERANCES NOT LISTED ON PROJECTION THIS DRAWING			
The information and/or design or configuration disclosed herein or in articles delivered is proprietary with Sumitomo Machinery Corp., and shall not be duplicated, used or disclosed to reproduce articles or subject matter covered therein without written permission of Sumitomo Machinery Corp. of America.			
SPECIFICATIONS:		TITLE	
1. APPROX OIL QTY:	105 L	5. MECH RATING:	1283 KW @ 1785 RPM
2. APPROX TOTAL WT:	1700 KG	6. THERMAL RATING:	842 KW @ 37.8 °C
3. TYPE OF LUBE:	FORCED LUBRICATION	P4 OUTLINE DIMENSIONS MODEL : QVRG2-CUN-10	
4. EXACT RATIO:	10.359:1	DESIGNED	LADunton
		DATE	1/13/2017
		SCALE	1:8
		DRAWING NO.	97QG-VR2NS708
		REV	CAH00243
		CHECKED	JRW
		DATE	1/23/2017
		APPROVED	JRW
		DATE	1/23/2017
		SHEET	1 OF 1