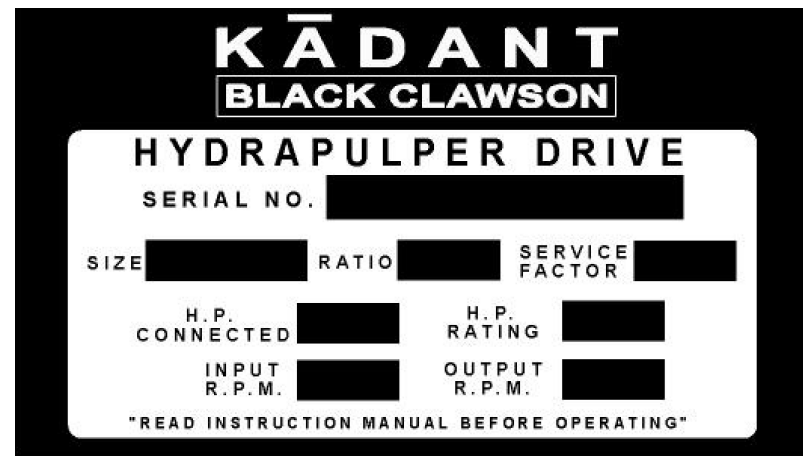


TO BE PREPARED FOR:
LONG TERM STORAGE
EXPORT PACKING

SPECIAL PAINT: IPC INTEGRARD 345
COLOR: PASTEL BLUE (RAL 5024)
EXTRA PT100 (3/4" NPT) AND WATER
CONTROL VALVE (2x 1" NPT PORTS)
SHIPPED LOOSE FOR WATER SIDE

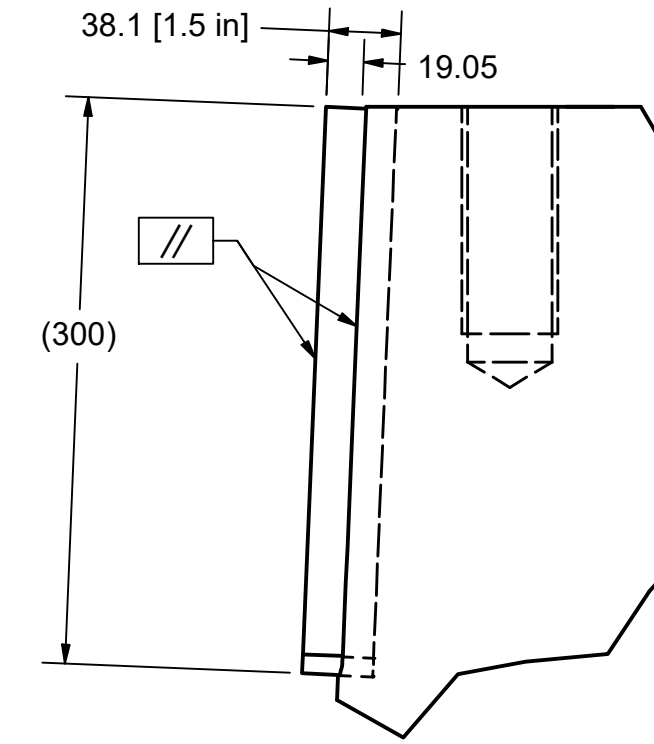
TAG: QVRG2-CUN-10
KBC P/N 6009982
KBC PO# 754043



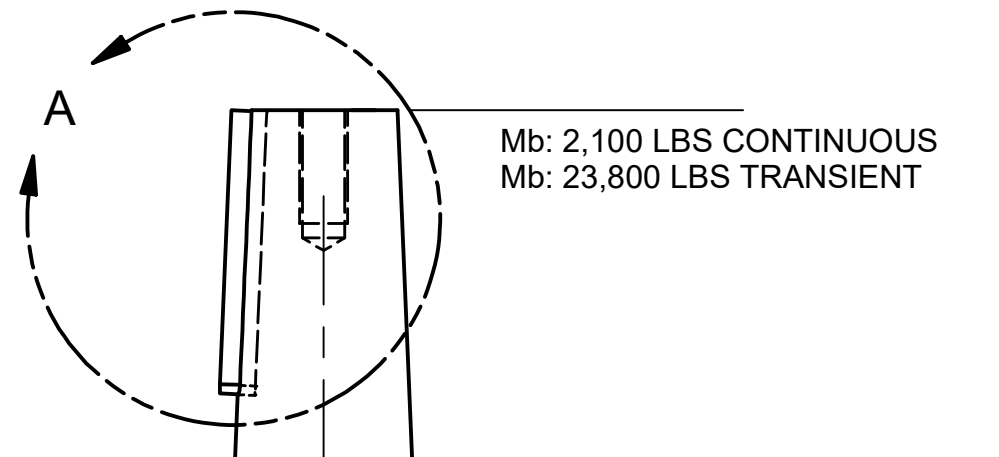
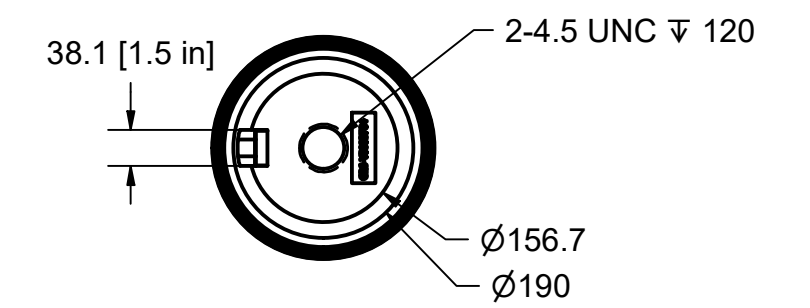
CERTIFIED FOR KADANT BLACK CLAWSON INC
CUSTOMER ORDER VOHZA051-001
APPROX. DRIVE PKG. WT. _____ LBS.
S.F. BASED ON 700 MTR HP
CERTIFIED BY: LUKE DUNTON
DATE: 1/23/2017

CUSTOMER APPROVED BY: _____ DATE: _____

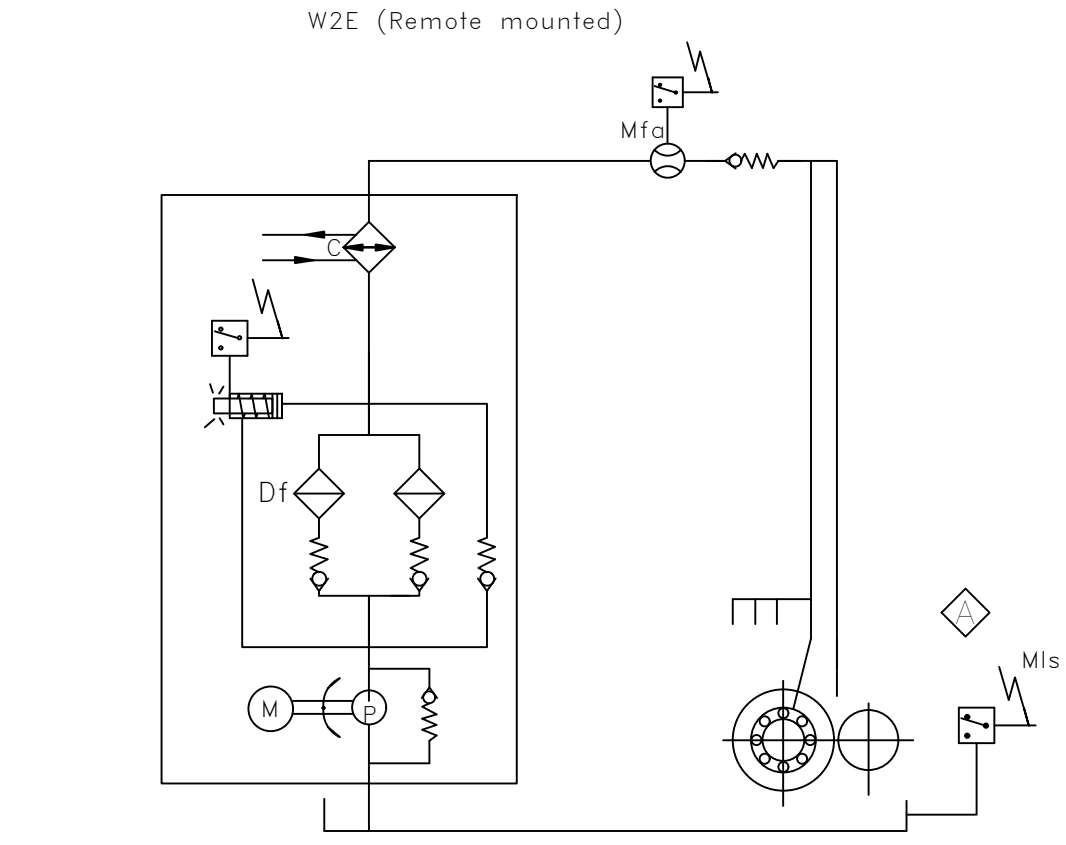
Hansen TRANSMISSIONS		Patented: US5680793, EP0648317, IN182162, JP2860164, KR187555, FI	
TYPE: QVRG2-CUN-10			
N ^o			
Pinion/Inch	1720hp/628,000in-lbs	SF	2.5
Ratio	10.359	m	1700KG
min ⁻¹	1785 / 172	RPM	VG
Grease		Nipples	
		EP GEAR OIL ISO 3448	150
		32°-86°F	220
		50°-122°F	105 L



DETAIL A
SCALE 1 : 4

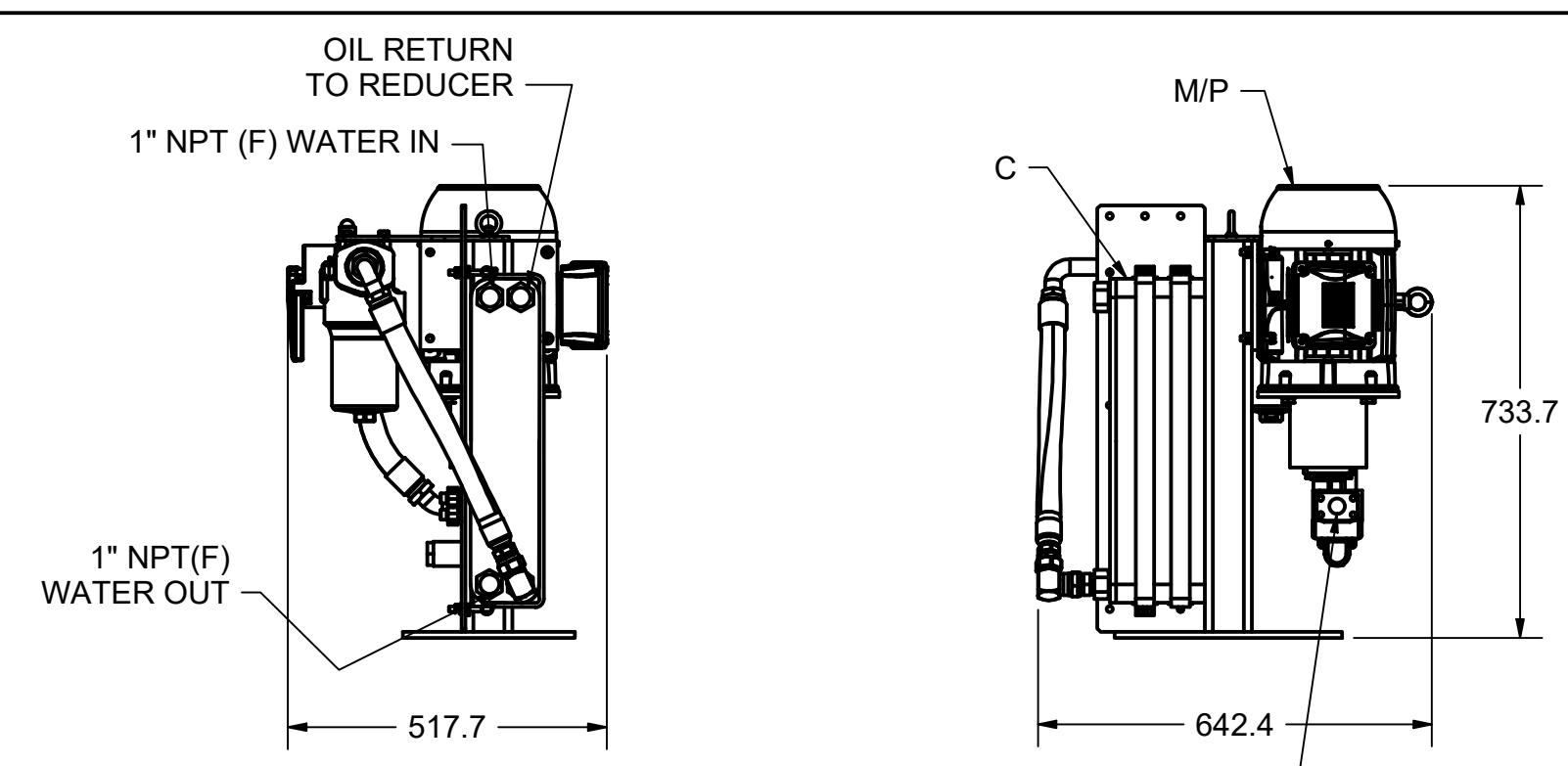
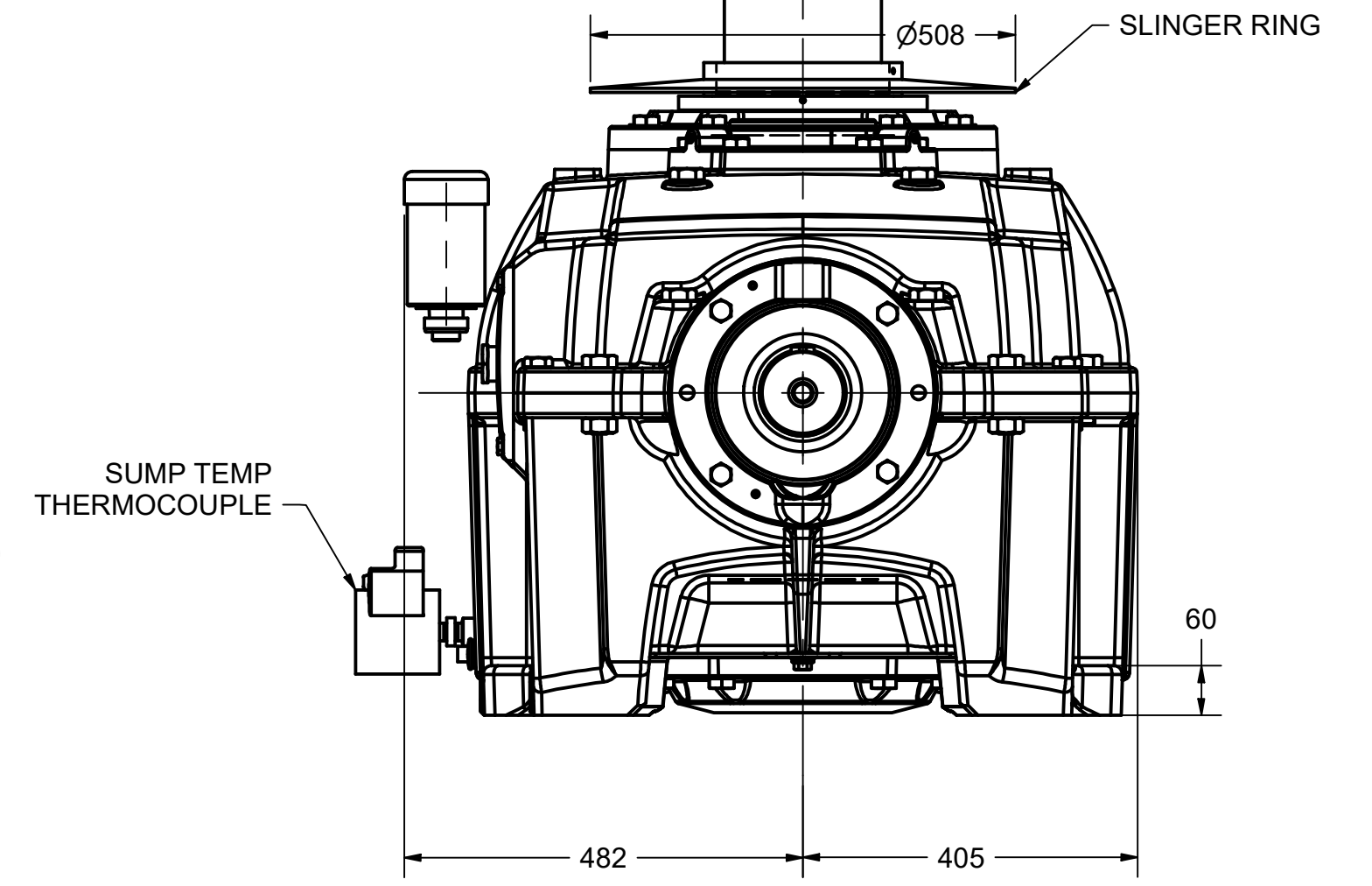
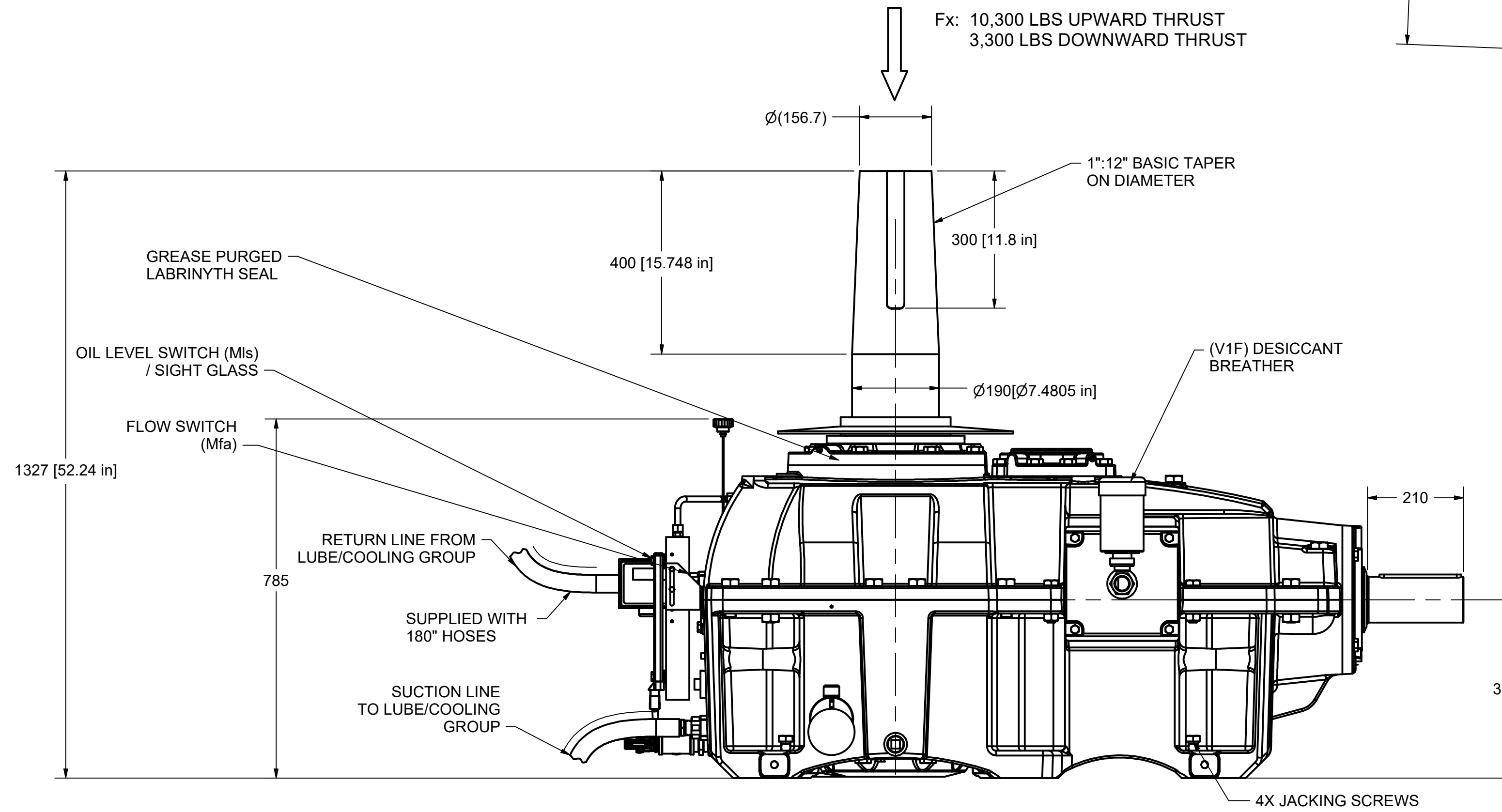


SUMP TEMP THERMOCOUPLE

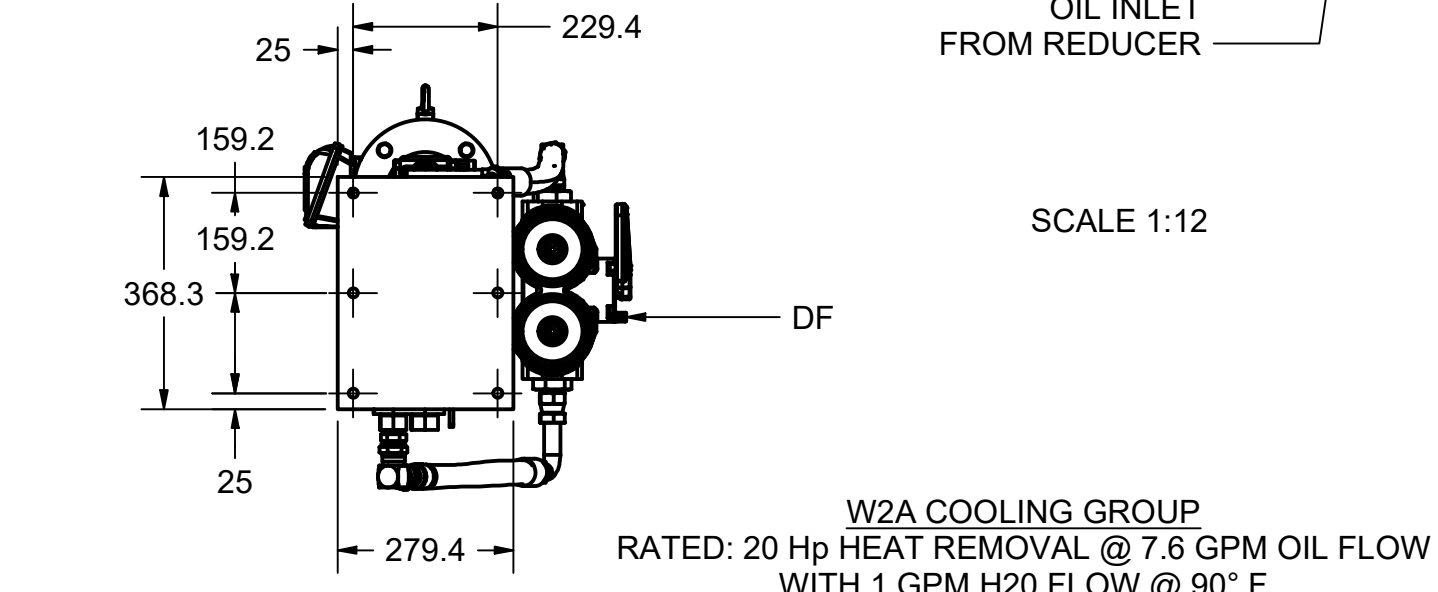


- M/P — Motorpump "Hydac" MPG-KF25-RF2-D15/S/184TC/2.0-6/230-460(part of cooling group)
2hp - 460V/480V-3P-60hz-TEFC
1200 RPM
- DF — Filter "Hydac" FLND400DDF (10micron)
(part of cooling group)
Electronic indicator
3A Max at 24V
- C — Heat Exchanger "Hydac" 615-60
(part of cooling group)
Water temp. 100°F max, 435 psi max
Min water flow rate reqd: 1 gpm
- Mfa — Flow switch "UNIVERSAL" - TM 4.03-e
HANSEN No: 259-F09200DR
-Set point: 5 gal/min
- Mls — Oil level switch / sight glass "Hydac"
HANSEN No: HAN-HYD3112302QQ01US
-MAX: 200mA AND 50V (AC or DC)

LUBRICATION SCHEMATIC

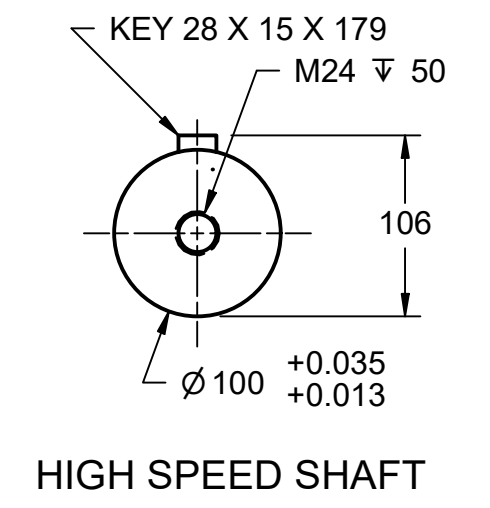
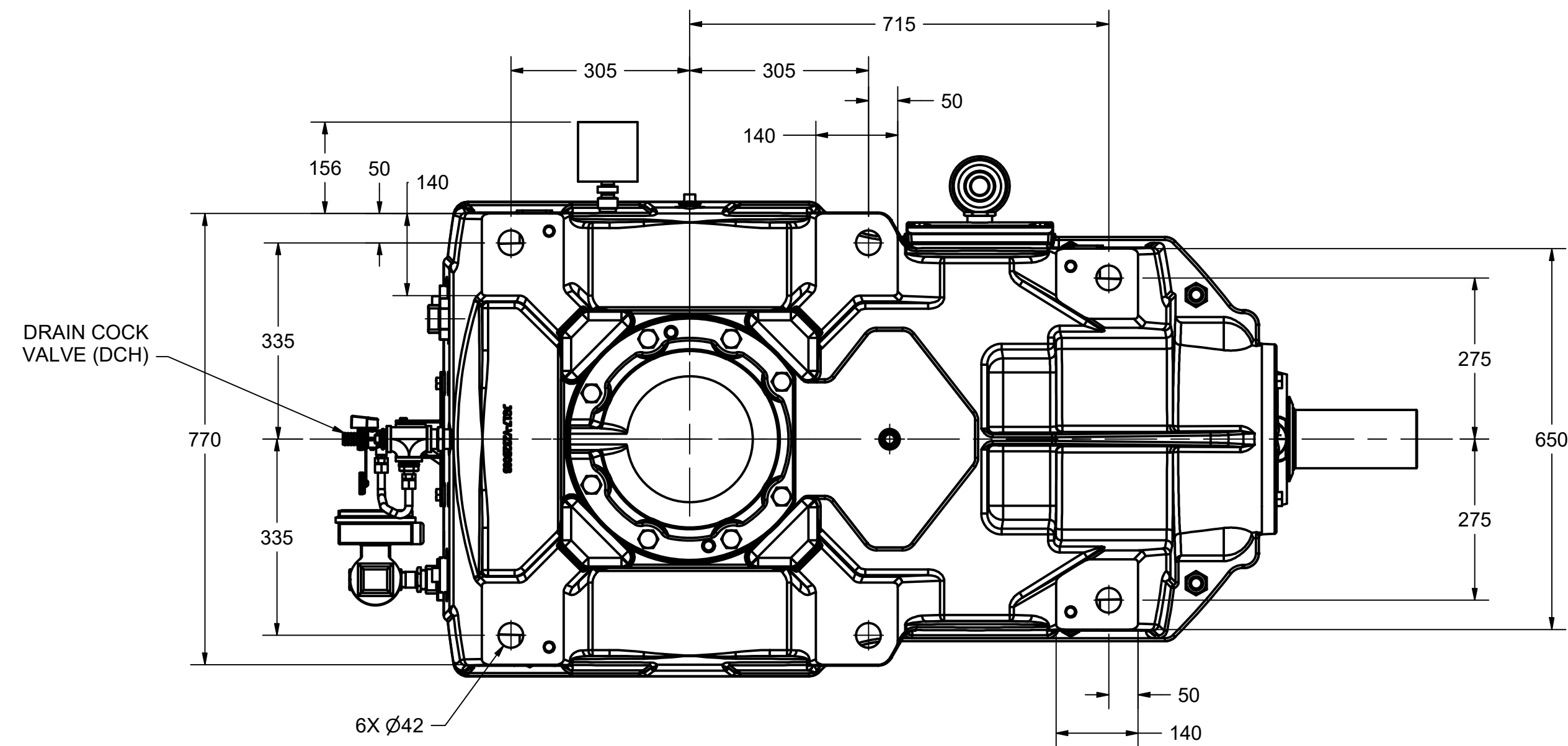


SCALE 1:12



W2A COOLING GROUP
RATED: 20 Hp HEAT REMOVAL @ 7.6 GPM OIL FLOW
WITH 1 GPM H2O FLOW @ 90° F

THE PURCHASER IS RESPONSIBLE FOR THE PROVISION OF SAFETY
GUARDS AND THE CORRECT INSTALLATION OF ALL EQUIPMENT.



NOTE: LOW SPEED SHAFT AXIAL MOVEMENT: 0.008 in MAX
RADIAL MOVEMENT: 0.060 in MAX
SF UPON TRANSIENT LOAD IS 1.64

CERTIFIED DIMENSION DRAWING		Sumitomo Drive Technologies		Sumitomo Machinery Corporation of America		DIMENSIONS ARE IN MILLIMETERS		TITLE	
FOR		4200 HOLLAND BOULEVARD, CHESAPEAKE, VA 23323		757-485-3355		THIRD ANGLE REFER TO ENGINEERING SPEC: SDG2-1548 FOR MANUFACTURING NOTES AND TOLERANCES NOT LISTED ON THIS DRAWING.		P4 OUTLINE DIMENSIONS MODEL : QVRG2-CUN-10	
CERTIFIED BY		Hansen						DRAWN: LADunton DATE: 1/13/2017 SCALE: 1:8 SM NO: QAH00243	
PI/O NUMBER		SPECIFICATIONS:						DESIGNED: DATE: DRAWING NO.	
PI/O NUMBER		1. APPROX OIL QTY: 105 L		5. MECH RATING: 1283 KW @ 1785 RPM				CHECKED: JRW DATE: 1/23/2017 97QG-VR2NS708	
MODEL		2. APPROX TOTAL WT: 1700 KG		6. THERMAL RATING: 642 KW @ 37.8 °C				APPROVED: JRW DATE: 1/23/2017 SHEET 1 OF 1	
RATIO		3. TYPE OF LUBE: FORCED LUBRICATION							
DATE		4. EXACT RATIO: 10.359:1							