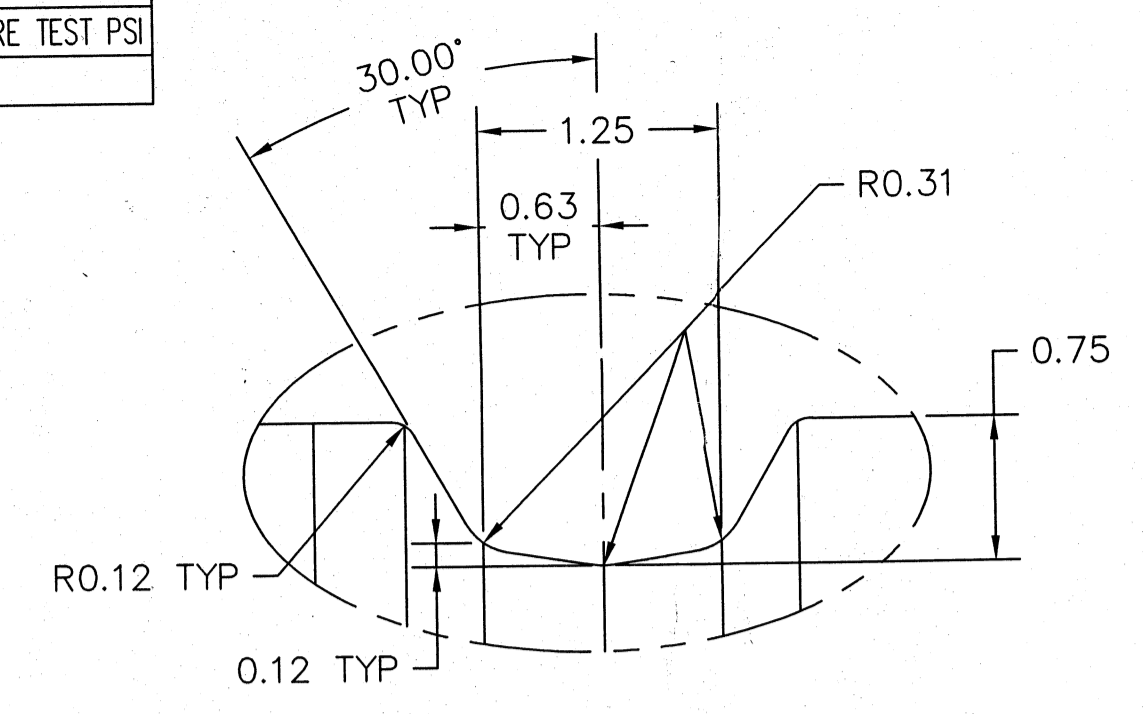


CLASS TOLERANCES AND TEST DATA							
ITEM	TOTAL CROWN	CROWN TOL.	SHAPE	STA. TO STA.	TAPER	CONC	PRESSURE TEST PSI
01	STRAIGHT		.0005	.0003	.001	.0005	

ROLL DESIGN SPECIFICATIONS	
ROLL POSITION	INTERMEDIATE
LOADING MAX.(pli)	465
DESIGN SPEED(FPM)	800
CRITICAL SPEED(FPM)	22791
PERCENT OF CRITICAL	3.5%
APPLICATION	ON MACHINE
ROLL CONTACT	2 HARD NIPS
WEB WIDTH(in)	90 (ESTIMATED)
PRODUCT WEIGHT	NOT SPECIFIED

ITEM	QTY	DESCRIPTION	DWG# / PART#	MATERIAL
1	1	ROLL ASSEMBLY	101810213000	
2	2	PIPE PLUG, FLUSH 3/8-18 NPT	REFERENCE	

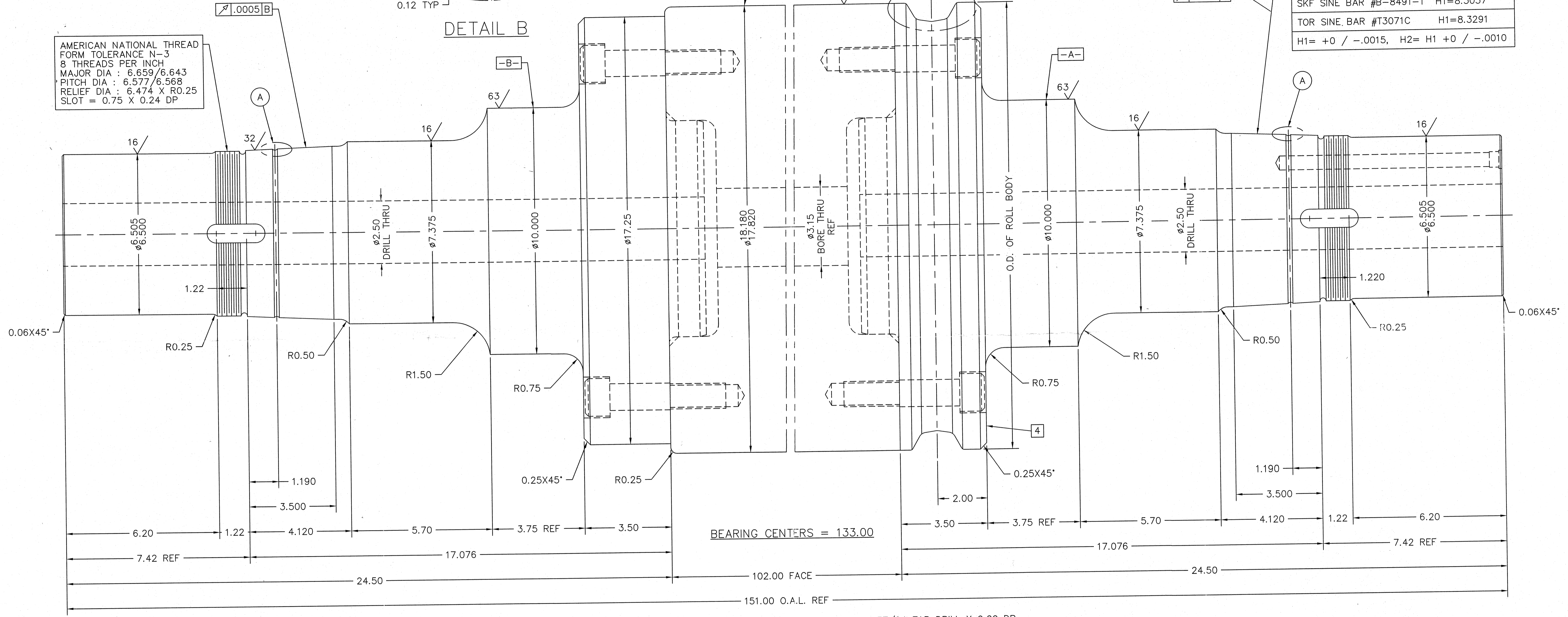


AMERICAN NATIONAL THREAD
FORM TOLERANCE N-3
8 THREADS PER INCH
MAJOR DIA : 6.659/6.643
PITCH DIA : 6.577/6.568
RELIEF DIA : 6.474 X R0.25
SLOT = 0.75 X 0.24 DP

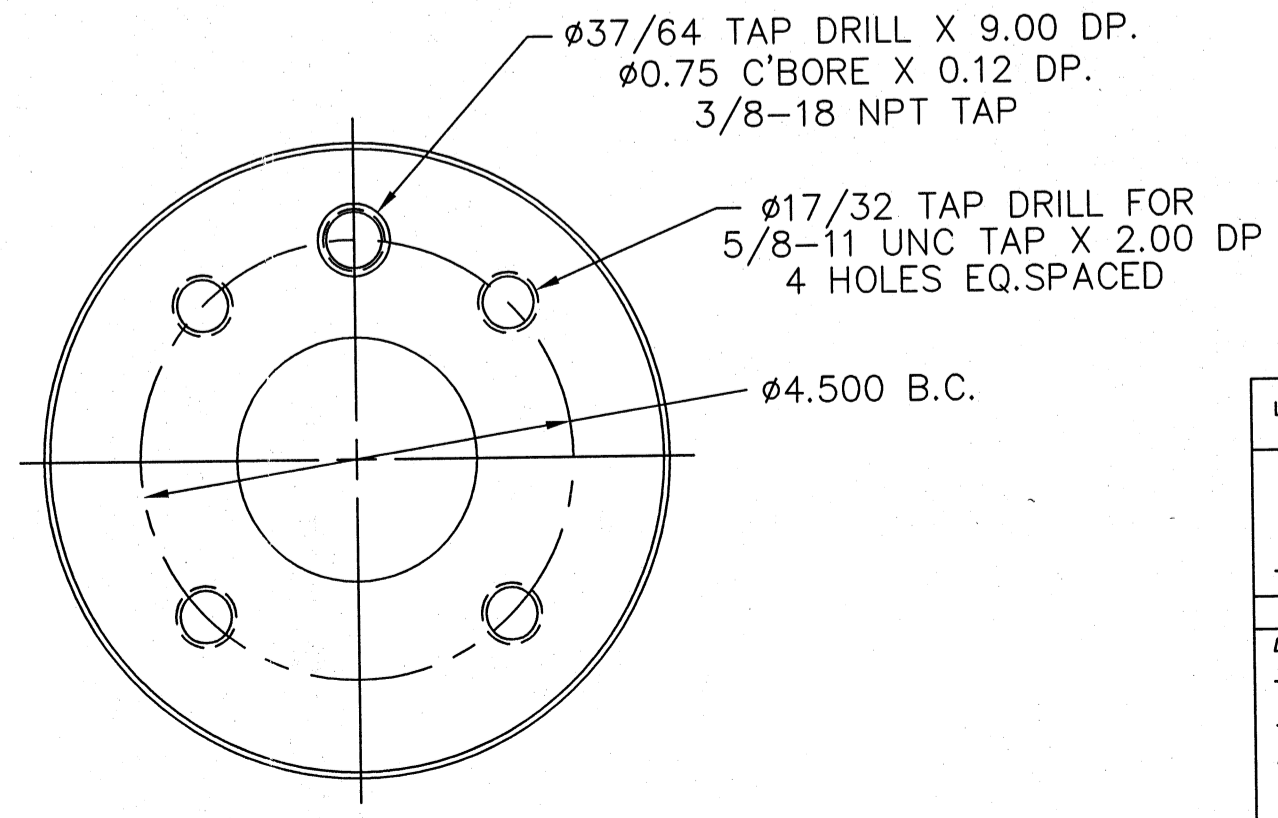
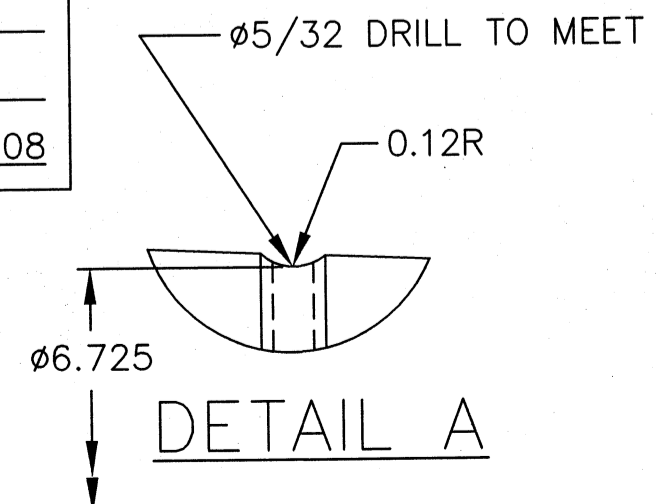
GRIND TAPER FOR BRG# 23134 K
1:12 TAPER ON DIA. 2"23' PER SIDE
LARGE END OF TAPER = Ø7.003
SMALL END OF TAPER = Ø6.711
LENGTH OF TAPER = 3.500

USE SINE BAR 6 PLACES
SURFACE TO SHOW 80% CONGRUITY
SINE BAR TO BE FLUSH W/END OF TAPER
SINE BAR LENGTH = 3.000

SKF SINE BAR #B-8491-1 H1=8.3037
TOR SINE BAR #T3071C H1=8.3291
H1= +0 / -.0015, H2= H1 +0 / -.0010



SHW-TORRINGTON, CT
CERTIFIED CORRECT FOR:
CUST. ORDER NO: 33594
SHOP ORDER NO: 8724
SENT BY: MTB DATE: 12-MAR-08



NOTES

- ESTIMATED ROLL WEIGHT = 7,800 LBS.
- BODY MATERIAL : GHHT580 CHILLED CAST IRON, HV580 (72 SHORE "C").
HEAD MATERIAL : AISI 1045 FORGED STEEL.
- DYNAMIC BALANCE IN ACCORDANCE WITH ISO GRADE G1.6 TO 800 SFPM (170 RPM)
MAXIMUM PERMISSABLE UNBALANCE = 221 OZ-IN PER END
CORRECTION LOCATION BEHIND (12) 1-8 UNC BOLTS LOCATED ON A Ø13.500 B.C.
- STAMP SALES/JOB/SERIAL NUMBER ON SURFACE NOTED.

THIRD ANGLE PROJECTION		DIMENSIONS IN INCHES UNLESS OTHERWISE SPECIFIED	
GEOMETRIC SYMBOLS		DIMENSIONS IN [] ARE METRIC	
□ FLATNESS	1 PLACE DECIMAL X.X ±.060	□ UNLESS OTHERWISE SPECIFIED	
- STRAIGHTNESS	2 PLACE DECIMAL X.XX ±.030		
⊥ PERPENDICULARITY	3 PLACE DECIMAL X.XXX ±.010		
∥ PARALLELISM	HOLE PATTERNS X.XXX ±.015		
∠ ANGULARITY	ANGULAR ±0'30' (±.5')		
◆ POSITION	FINISH ✓ 125 MICRO INCHES		
∩ RUNOUT	THREADS UNC-CLASS 2A-2B		
● CONCENTRICITY	FILLETS .03R TO .06R		
○ ROUNDNESS	BREAK CORNERS & REMOVE BURRS		

D	8724	ALL	REMOVED LOCKNUTS AND ADDED "BH"	MTB	SD	12-MAR-08
C	5585	D8	90 PSI PRESSURE TEST REMOVED	SD	SD	08/27/01
B	5585	ALL	PICTORIALLY CORRECTED SLOT LENGTH	SD	SD	08/23/01
A	5585		ORIGINAL ISSUE			
DWG. REV.	STARTS WITH ORDER #	ZONE	REVISION	BY	CHKD	DATE
			SHW			
90 COMMERCIAL BVLVD FLORENZ 238 TORRINGTON CT 06790-0238						
THE DATA CONTAINED HEREIN IS PROPRIETARY AND CONFIDENTIAL. REPRODUCTION OR DISTRIBUTION OF ANY PART REQUIRES WRITTEN CONSENT OF SHW. THIS DATA IS THE PROPERTY OF SHW AND ITS POSSESSION CONFERS NO LICENSE TO USE OR TO DISCLOSE IT TO OTHERS FOR ANY PURPOSE WHATSOEVER. ALL RIGHTS RESERVED.						
REF. DWGS SHW 101810201000			TITLE			
			18" X 102" CALENDER ROLL			
DWNBY	MTB	DATE	8-MAR-01	SIZE	D 101810211000-BH	
CHK'D BY	SD	DATE	12-MAR-01	SCALE	1 ; 2	
APPR BY	SD	DATE	12-MAR-01	SHEET	1 OF 1	