

“UNIVERSAL” FLOW SWITCH

1

E

2009-08-27

1. MANUFACTURER.

Universal flow monitors, Inc.
 1755 East Nine Mile Road,
 P.O. Box 249 Hazel Park, MI 48030
 Tel. : (001) 248-542-9635
 Fax : (001) 248-398-4274
www.flowmeters.com
 E-mail: ufm@flowmeters.com

2. IDENTIFICATION.

Supplier Nr.	H.I.T.* Nr.	Max oil flow		Connection (NPT)
		l/min	GPM	
SN-ASB1GM-4-100V.9-A1WR-RG-.5D	259-F01050D	3,8	1	1/2
SN-ASB2GM-4-100V.9-A1WR-RG-.5D	259-F02050D	7,6	2	1/2
SN-ASB3GM-4-100V.9-A1WR-RG-.5D	259-F03050D	11,4	3	1/2
SN-ASB4GM-4-100V.9-A1WR-RG-.5D	259-F04050D	15,1	4	1/2
SN-ASB5GM-6-100V.9-A1WR-RG-1D	259-F05100D	18,9	5	3/4
SN-ASB6GM-6-100V.9-A1WR-RG-1D	259-F06100D	22,7	6	3/4
SN-ASB8GM-6-100V.9-A1WR-RG-2D	259-F08200D	30,3	8	3/4
SN-ASB9GM-6-100V.9-A1WR-RG-2D	259-F09200D	34,1	9	3/4
MN-ASB15GM-6-100V.9-A1WR-RG-4D	259-F15400D	56,8	15	3/4
MN-ASB20GM-8-100V.9-A1WR-RG-4D	259-F20400D	75,7	20	1
MN-ASB30GM-8-100V.9-A1WR-RG-4D	259-F30400D	113,6	30	1

3. DESCRIPTION.

The flow switch consists of aluminium housing with a waterproof plastic box.
 These variable-area flow meters have a spring-loaded swinging vane. The oil flow forces the vane to rotate and provide an increasingly larger orifice for the oil to pass. A pointer mounted on the vane shaft gives a visual indication of the flow. An adjustable cam also mounted on the vane shaft actuates an electric switch indicating the minimum flow condition.

The switching point is factory calibrated for decreasing flow.

The mounting is inline and is possible in any position.

* H.I.T. : Hansen Industrial Transmissions nv

 Appr. : DMT
 Goedk. :

 Prep. : MSE
 Voorb. :

DISTRI

 Repl. : Ed. D
 Verv. : 1999-06-29
 TM 4.03-e

E

“UNIVERSAL” FLOW SWITCH

2

E

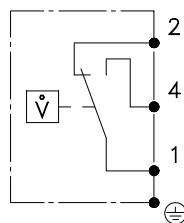
2009-08-27

4. TECHNICAL SPECIFICATIONS.
4.1. Mechanical

	SN-ASB	MN-ASB
Material	Housing	
	Aluminium with nylon bowl	
	Internal moving parts	
	Stainless steel (300 series & 416)	
	Seals	
	Buna N	
	Control box	
	Plastic	
Max. operating pressure	300 PSI (2067 kPa)	
Pressure drop	1,9 to 2,5 PSI	1,9 to 3,8 PSI
Viscosity	100 SSU	
Max. fluid temperature	200°F (95°C)	
Max. ambient temperature	150°F (65°C)	
Readout accuracy	±5% of full scale	±2% of full scale

4.2. Electrical

	Alternating current (AC)		Direct current (DC)			
Operating voltage	125 V	600 V	125 V	250 V	24 V	
	250 V		Resistive 6A	0,5 A	0,25 A	Inductive 5A
	480 V					
Service current	15 A	2 A	0,5 A	0,25 A		
Type of contact	SPDT 3-Wire change-over					
Protection class	Nema 4 (IP 65)					

5. WIRING DIAGRAM.


2: Normally closed (NC)
 4: Normally open (NO)
 1: Common (C)

6. MAINTENANCE.

Periodic maintenance:

Check the meter function by varying flow through it and observing if the flow indications are tracking. If not, there may be an obstruction around the flow-sensing element.