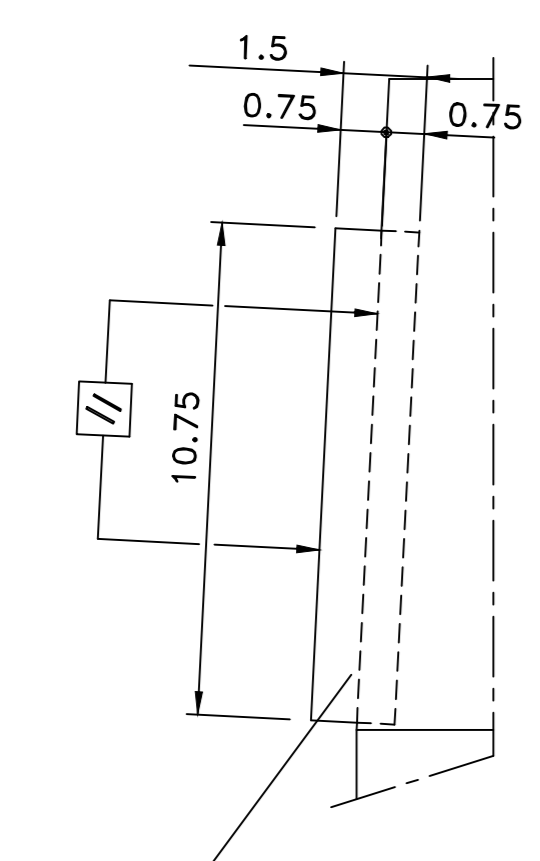


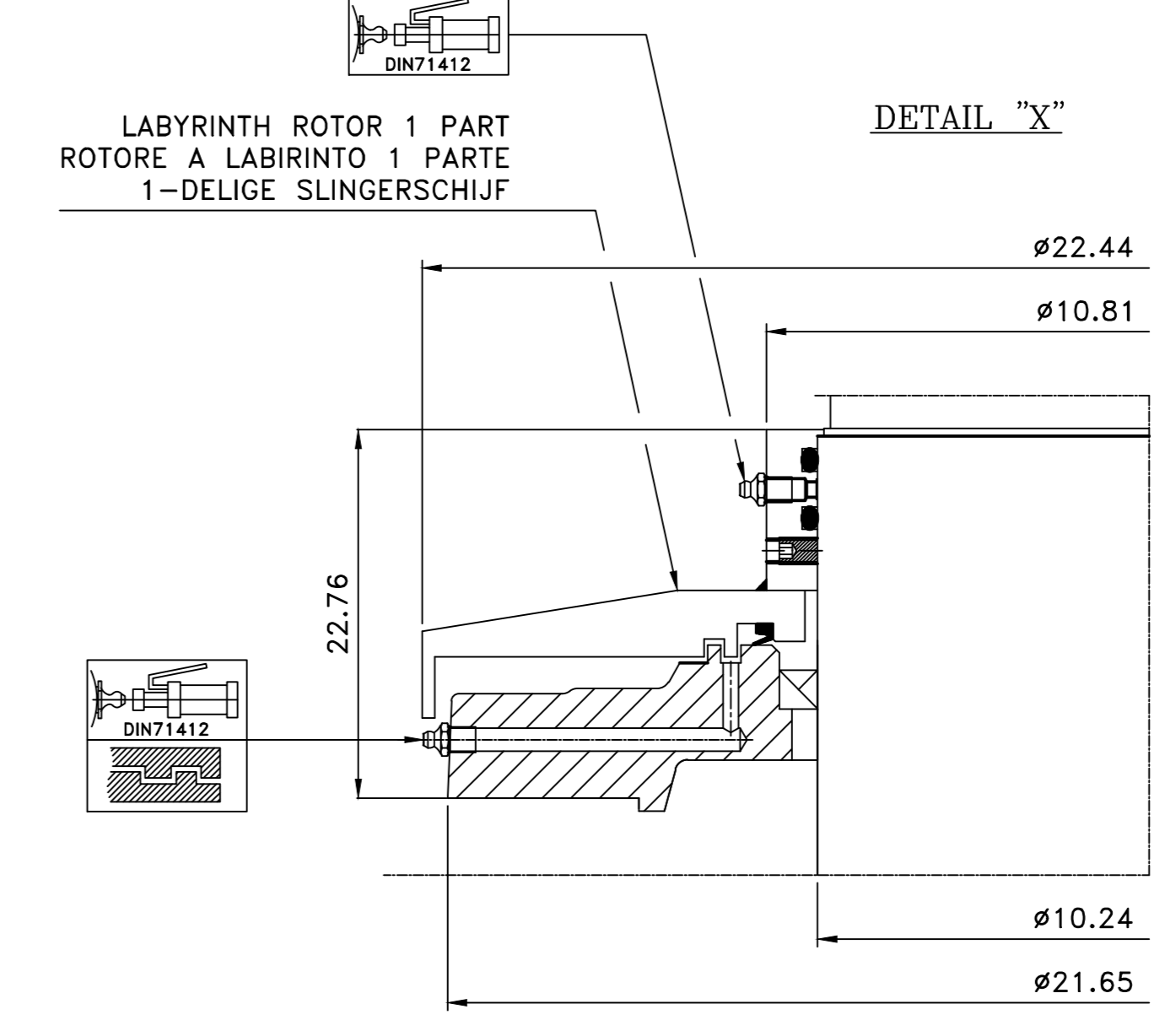
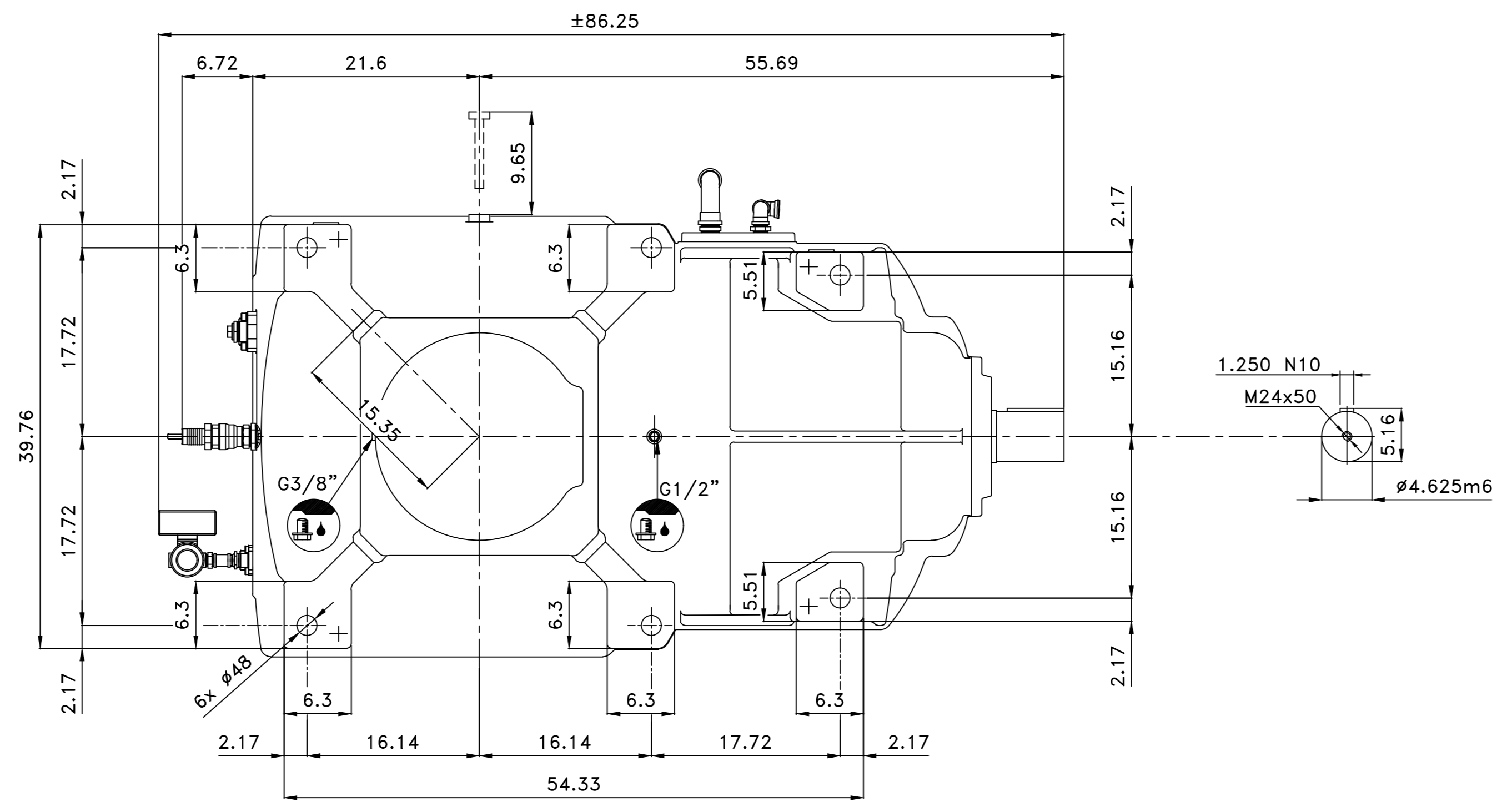
NOT SUPPLIED BY "HANSEN"  
NIET GELEVERD DOOR "HANSEN"  
Min. oil flow TO BE DEFINED  
Min. cooling power TO BE DEFINED  
Min. oliedebit NOG TE BEPALEN  
Min. koelvermogen NOG TE BEPALEN

- P - Pump
  - F - Filter
  - C - Cooler
  - M - Motor
  - MFA - HANSEN No: TO BE DEFINED  
-Alarm set point:  
-Alarmschakelpunt: TO BE DEFINED
- DELIVERED AND MOUNTED BY CUSTOMER  
LEVERING EN MONTAGE DOOR KLANT

DETAIL "A"

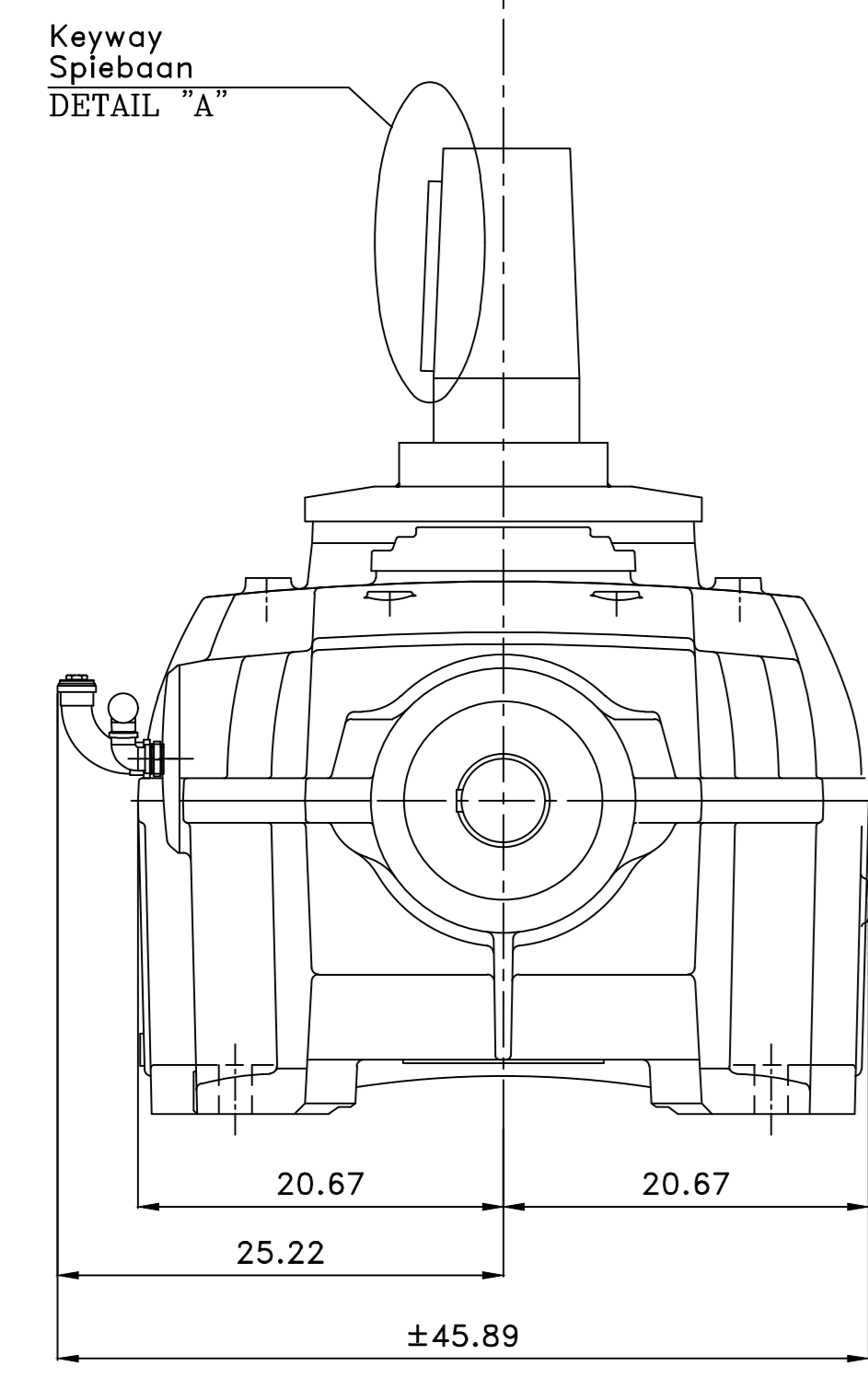
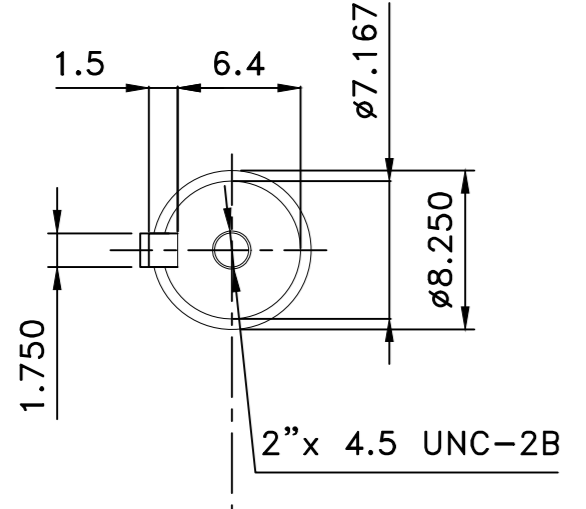


Key way  
Splebaan  
1.75" x 1.5"  
ANSI B17.1

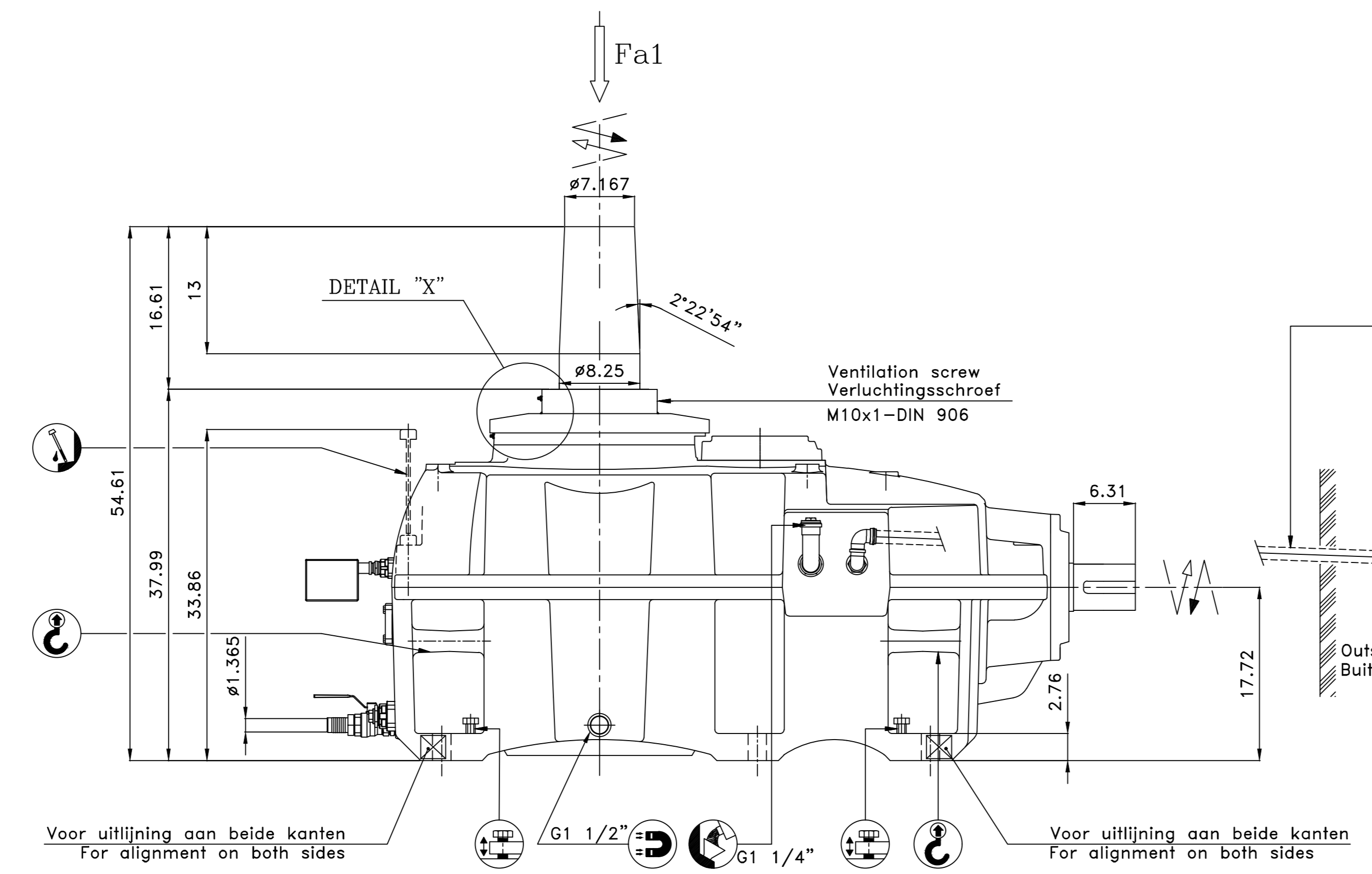


LABYRINTH ROTOR 1 PART  
ROTORE A LABIRINTO 1 PARTE  
1-DELIGE SLINGERSCHIJF

DETAIL "X"

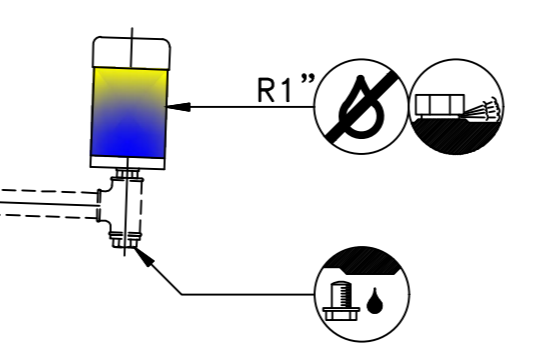


Keyway  
Splebaan  
DETAIL "A"



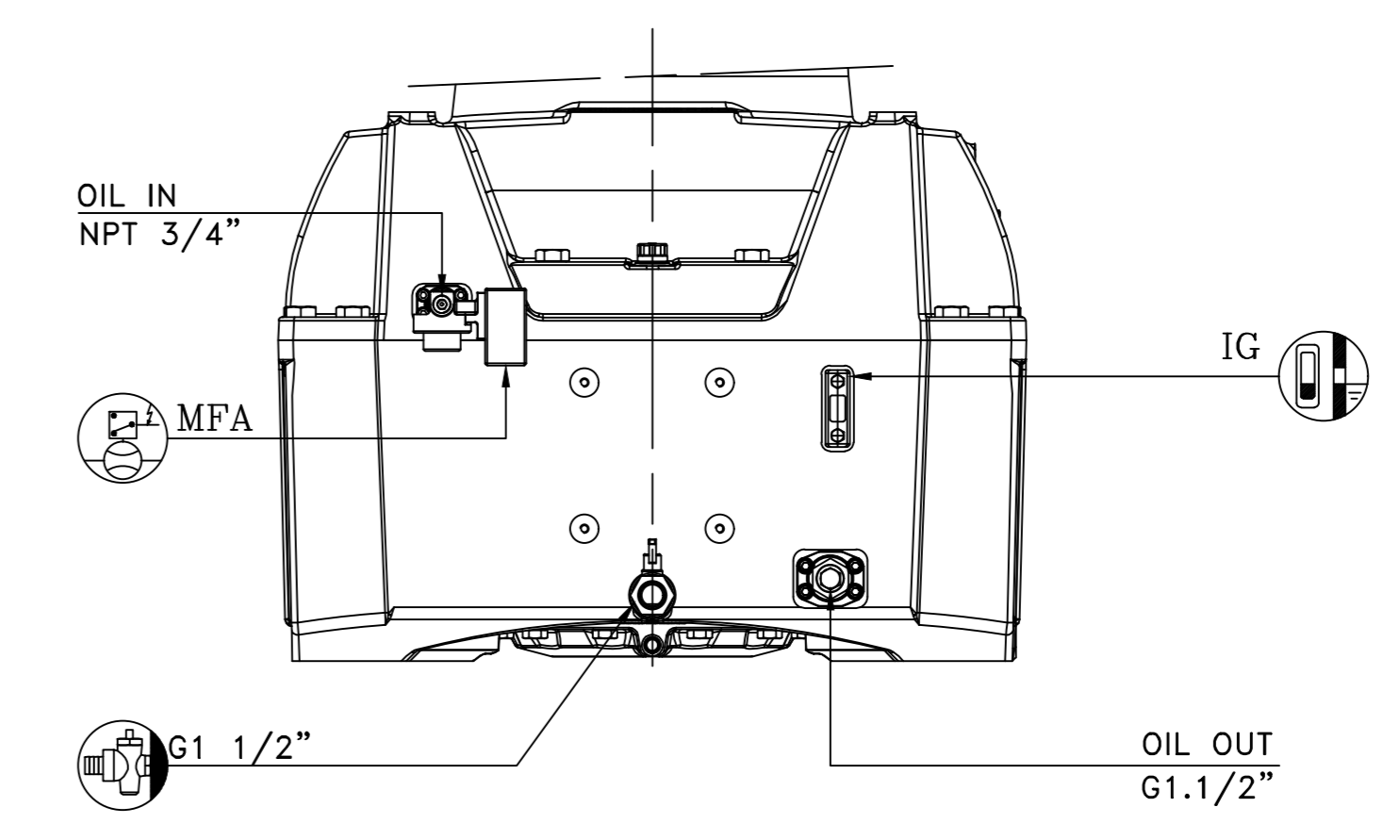
Piping in dashed line  
Leidingen in streeplijn  
-2" (min 1")

NOT SUPPLIED BY "HANSEN"  
NIET GELEVERD DOOR "HANSEN"

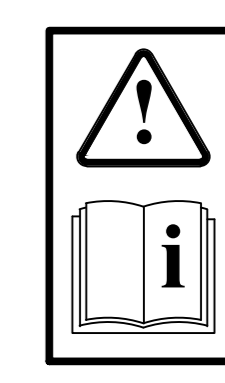


Outside pulper environment  
Buiten pulper omgeving

Voor uitlijning aan beide kanten  
For alignment on both sides



MASS (approx.) 5953 lb  
MASSA (benaderend) -Without oil- -Zonder olie-  
OIL CAP. (approx.) 55.5 gal  
OLIECAP. (benaderend)  
OIL VISCOSITY OLIEVISCOSITEIT  
TO BE DEFINED 32 ---> 100 °F



TENTATIVE DRAWING  
VOORLOPIGE TEKENING

Rev	Description	Status	Approved	Date
A	ISSUED	Released	ZVA	25/08/2023

Sumitomo Drive Technologies  
Hansen Industrial Transmissions N.V.

-THE USER IS RESPONSIBLE FOR THE SYSTEM; THE PROVISION OF SAFETY GUARDS, THE CORRECT INSTALLATION OF ALL EQUIPMENT AND SYSTEM DYNAMICS WITH AGMA 2101.  
-DE GEBRUIKER IS VERANTWOORDELIJK VOOR HET SYSTEEM; HET VOORZIEN VAN BESCHERMINGEN, HET VAKKUNDIG INSTALLEREN VAN DE VOLLEDIGE UITRUSTING EN HET VOLDOEN AAN AGMA 2101 VOOR SYSTEEM DYNAMICA.