

Pump Number	Pump Size	Test/Serial Number	Equipment Number	Service/ Application	Rated	Comments
10	VG 40XVE4-M S/S	2919	242	#2 PM West Pump	90%	Position 1, grease lube, right side drive end discharge, double ext. shaft, driven by a Reliance motor 200 hp, 1190 rpm

This pump is a Vooner and has an original test date August of 2015. The pump is stainless steel construction. The idle end clearances and the internals looks good. The drive end rotor taper is uneven and the taper clearance is slightly excessive at the tip.



Drive end Rotor shroud clearance is good.



Drive end rotor taper is uneven.



Drive end rotor taper clearance is good.



Idle end Rotor shroud clearance is good.



Idle end rotor taper is good.

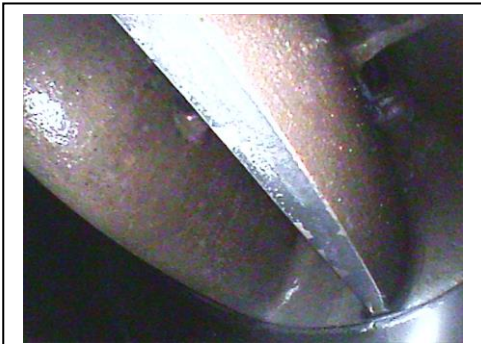


Idle end rotor taper clearance is good.

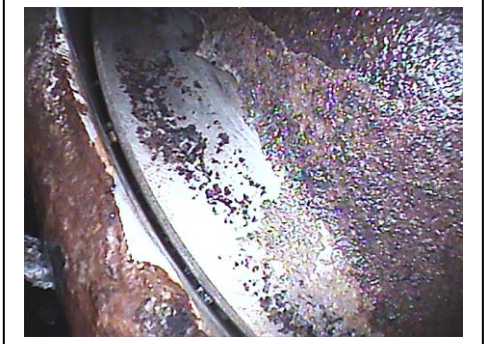
Pump Number	Pump Size	Test/Serial Number	Equipment Number	Service/ Application	Rated	Comments
10 continued						



Outer Drive end Rotor Blades in good condition.



Outer Idle end Rotor Blades in good condition.



Drive end rotor taper clearance at the small diameter is slightly excessive.



Idle end rotor taper clearance at the small diameter is good.