



PIRATE BRAND[®]

S-SERIES

1.5 / 3.5 / 6.5 - SMALL ABRASIVE BLASTERS



Proudly Distributed By:

PRODUCT LINE BROCHURE

FEATURES AND BENEFITS

1.5 / 3.5 / 6.5 CU. FT. SIZES

(43 / 100 / 185 Liter)

⚓ CUSTOM BUILT FOR YOU ⚓

Pressure Release (SPR) or Pressure Hold (SPH), 1.5, 3.5 or 6.5 cu. ft., Portable or Stationary, Urethane or Long Life Tungsten Metering Valve. Whatever your blasting needs are, Pirate Brand® has got you covered.

⚓ QUALITY ⚓

At Pirate Brand®, we know abrasive blasting and have put our knowledge and experience to work in building the highest quality blasting equipment available. From our all galvanized pipe string with heavy wall piping at crucial wear points, to our quality powder coated metering valves, Pirate Brand® blasters will be ready to work hard when you need them.

⚓ HIGHER PRODUCTIVITY ⚓

The faster you can blast, the more profitable you can be. That is why we have engineered Pirate Brand® blasters to run up to 150 PSI (10.3 BAR) day in and day out, allowing you to get the job done quickly and efficiently. For the ultimate in productivity, try our **BIG GUN™** full flow system. It features a zero-pressure-drop path for air & abrasive to travel to the blast nozzle. This is important because for every 1 PSI of pressure gained or lost, 1.5% of productivity is gained or lost.

⚓ ENGINEERED TO HIGHER STANDARDS ⚓

When we set out to build the best engineered abrasive blasters available, we set the bar high when it came to efficiency, performance & ease of maintenance. One way we improved efficiency was to engineer an A.S.M.E. Section VIII Division 1 & CRN for all provinces pressure vessel that can run 150 PSI (10.3 BAR) all day long. We also use high quality full-port ball valves for less restriction. When it comes to ease of maintenance, we realize it is the little things that most manufacturers don't think about that can make the difference between an easy repair and a frustrating, time-consuming nightmare. One example of the many ways in which a Pirate Brand® Abrasive Blaster is easier to maintain is the fact we use bolt clamps on our pusher lines to make field repairs easier.

⚓ MADE IN THE USA ⚓

Pirate Brand® abrasive blasters are built right here in the USA at the crossroads of America, allowing us to provide in-depth quality control and short lead times even for custom builds.



1.5 CU. FT.
(43 Liters)

Portable Abrasive Blasters

Available in:
Pressure Release (SPR)
Pressure Hold (SPH)



3.5 CU. FT.
(100 Liters)

Portable Abrasive Blasters

Available in:
Pressure Release (SPR)
Pressure Hold (SPH)



6.5 CU. FT.
(185 Liters)

Portable & Stationary
Abrasive Blasters

Available in:
Pressure Release (SPR)
Pressure Hold (SPH)



SPR SERIES

(PRESSURE RELEASE)

HOW SPR SYSTEMS WORK

ADDING ABRASIVE

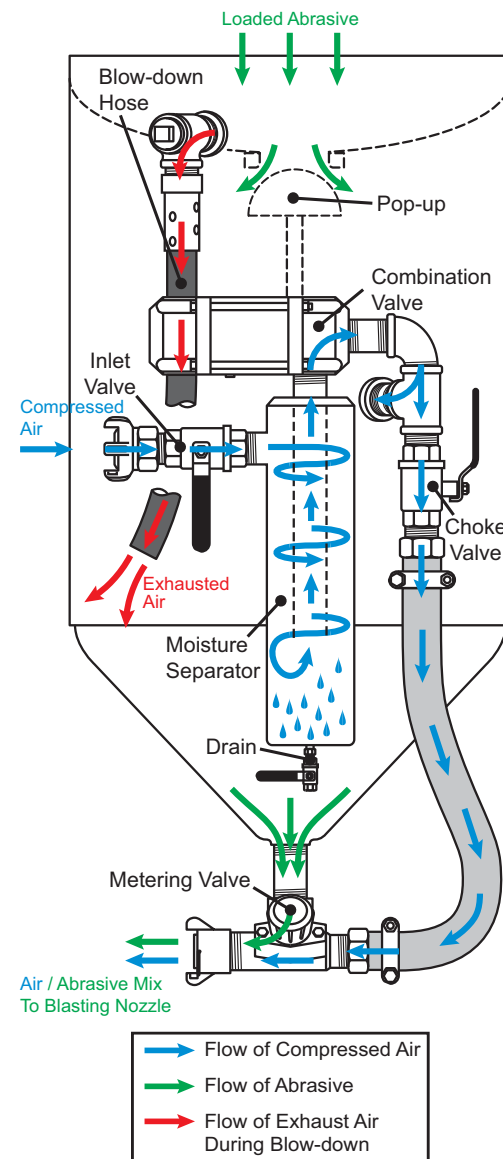
Abrasive is added through the hole in the top of the Abrasive Blaster where the Pop-up and its seat are located. When abrasive is added, it flows down through the hole, around the Pop-up, and down to the bottom of the pressure vessel where it will exit through the Metering Valve when blasting is started.

PRESSURIZATION

When a compressed air source (such as an air-compressor) is connected to the inlet of the Abrasive Blaster and the Inlet Valve is opened, compressed air flows through the Moisture Separator and reaches the Combination Valve where it is stopped. When the control handle is activated, the Combination Valve pinches the Blow-down Hose and air flows through the Combination Valve into the pressure vessel causing the Pop-up (located internally) to seal against its seat. The pressure vessel is now sealed and pressurized. Air will also continue past the Choke Valve to the Metering Valve where it is mixed with abrasive. The mixture of compressed air and abrasive will now exit the Abrasive Blaster through a blast hose and nozzle connected to the coupling on the Metering Valve and blasting begins. It is important to note that in SPR abrasive blasters equipped with MPV Metering Valves, some abrasive will collect at the base of the valve causing the blast hose to pulsate and spray abrasive erratically for a short time when blasting is started. This is normal and will not hurt the Abrasive Blaster.

DEPRESSURIZATION (BLOW-DOWN)

When the control handle is released in a pressure release (SPR) system, the Combination Valve automatically closes stopping the flow of compressed air and releasing the Blow-down Hose. The compressed air remaining in the pressure vessel is released through the Blow-down Hose and blasting ends.



SPH SERIES

(PRESSURE HOLD)

HOW SPH SYSTEMS WORK

ADDING ABRASIVE

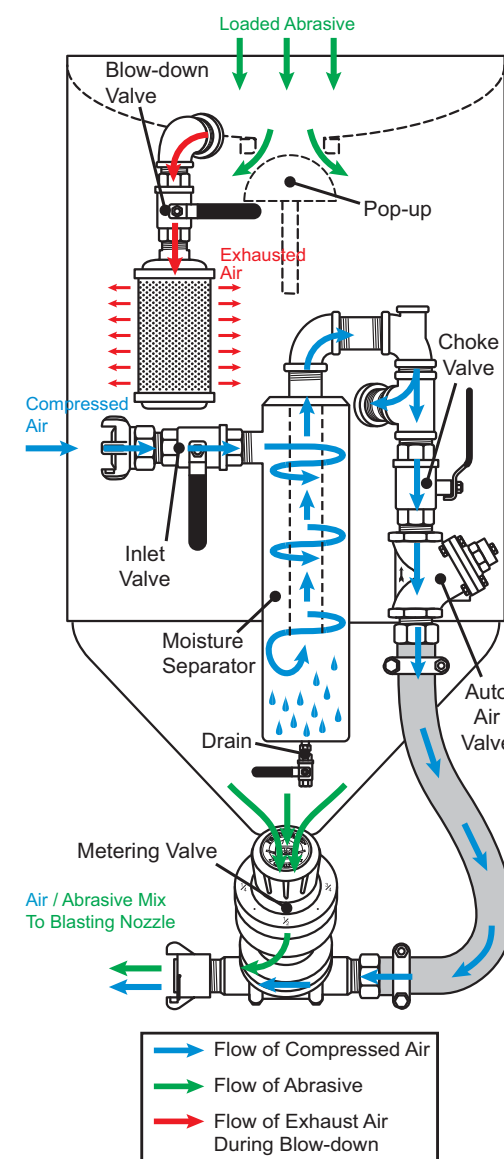
Abrasive is added through the hole in the top of the Abrasive Blaster where the Pop-up and its seat are located. When abrasive is added, it flows down through the hole, around the Pop-up, and down to the bottom of the pressure vessel where it will exit through the Metering Valve when blasting is started.

PRESSURIZATION

Before pressurization can take place in a pressure hold system, the Blow-down Valve must be closed. Then, when a compressed air source (such as an air-compressor) is connected to the inlet of the Abrasive Blaster and the Inlet Valve is opened, compressed air can flow through the Moisture Separator and into the pressure vessel causing the Pop-up (located internally) to seal against its seat allowing the pressure vessel to become pressurized. When the control handle is activated, the Auto Air Valve and Metering Valve open allowing compressed air & abrasive to flow and mix. The mixture of compressed air and abrasive will now exit the Abrasive Blaster through a blast hose and nozzle connected to the coupling on the Metering Valve and blasting begins.

DEPRESSURIZATION (BLOW-DOWN)

When the control handle is released in a pressure hold (SPH) system, the pressure vessel remains filled with compressed air. The compressed air remaining in the pressure vessel is released when the inlet valve is manually closed and the blow-down valve is manually opened.



SPR OR SPH? TWO GREAT SYSTEMS,

BUT WHICH IS RIGHT FOR YOU?

SPR STRENGTHS

- Automatically blows down vessel when control handle is released
- Low maintenance design
- Simple troubleshooting for in field repairs
- Manual Plunger Valve is a simple reliable design that provides a wide range of adjustment of abrasive flow to the nozzle
- Great for eliminating premature blow down failure that is common with other manufacturers

COMMON APPLICATIONS

- Stationary blasters for blast rooms
- Great starter blaster for first-timers
- A favorite of rental houses
- Use when automatically filling from an overhead hopper

SPH STRENGTHS

- Reduced abrasive consumption
- Reduces moisture problems
- Smoother starts & stops
- Heavy Duty Filtered Control Valve reduces stopping time when control handle is released
- Included Blow Down Muffler reduces unnecessary loud noise
- Abrasive cut-off option for high velocity blow off

COMMON APPLICATIONS

- One-shot premium media blasting
- Corn cob blasting
- Precision blasting applications
- Short blast cycles



BLASTING PACKAGES

Get Blasting Quickly With Pirate Brand® Blasting Packages.

Pirate Brand® offers 4 convenient blasting packages that are designed to give you what you need to get started blasting.

- BASE

Includes Pneumatic S-Series Blaster, Twinline Pneumatic Control Hose & Pneumatic Remote Control Handle.
- BRONZE

Includes Base Package + Blast Hose & Nozzle.
- SILVER

Includes Bronze Package + Blast Suit, Luxury Double Palmed Gloves & Nova 2000 Respirator Package.
- GOLD

Includes Silver Package + 2 Air Hose Assemblies to connect Blaster and Respirator to your Air Supply.



Gold Blasting Package Shown with Air Compressor, CO Monitor, Skid of Media & Pirate Brand® Air Dryer

SPR PACKAGES (PRESSURE RELEASE)



BASE BLASTING PACKAGE
PORTABLE ABRASIVE BLASTER, 150 PSI (10.3 BAR), PRESSURE RELEASE SYS, PNEUMATIC, INCL: MPV/COMBINATION VALVE, MOISTURE SEPARATOR, 55' TWINLINE ASSY & CONTROL HANDLE #2

PART NUMBERS
1.5 - 0131-126-11A
3.5 - 0331-126-11A
6.5 - 0531-127-11A



BRONZE BLASTING PACKAGE
PORTABLE ABRASIVE BLASTER, 150 PSI (10.3 BAR), PRESSURE RELEASE SYS, PNEUMATIC, INCL: MPV/COMBINATION VALVE, MOISTURE SEPARATOR, 55' TWINLINE ASSY, CONTROL HANDLE #2 & BLAST HOSE W/NOZZLE

PART NUMBERS
1.5 - 0131-126-11B
3.5 - 0331-126-11B
6.5 - 0531-127-11B



SILVER BLASTING PACKAGE
PORTABLE ABRASIVE BLASTER, 150 PSI (10.3 BAR), PRESSURE RELEASE SYS, PNEUMATIC, INCL: MPV/COMBINATION VALVE, MOISTURE SEPARATOR, 55' TWINLINE ASSY, CONTROL HANDLE #2, BLAST HOSE W/NOZZLE, BLAST SUIT, LUXURY DOUBLE PALMED GLOVES & NOVA 2000 RESPIRATOR PACKAGE

PART NUMBERS
1.5 - 0131-126-11C
3.5 - 0331-126-11C
6.5 - 0531-127-11C



GOLD BLASTING PACKAGE
PORTABLE ABRASIVE BLASTER, 150 PSI (10.3 BAR), PRESSURE RELEASE SYS, PNEUMATIC, INCL: MPV/COMBINATION VALVE, MOISTURE SEPARATOR, 55' TWINLINE ASSY, CONTROL HANDLE #2, BLAST HOSE W/NOZZLE, BLAST SUIT, LUXURY DOUBLE PALMED GLOVES, NOVA 2000 RESPIRATOR PACKAGE & (2) AIR HOSES TO CONNECT BLASTER AND RESPIRATOR TO AIR SOURCE

PART NUMBERS
1.5 - 0131-126-11D
3.5 - 0331-126-11D
6.5 - 0531-127-11D

SPH PACKAGES (PRESSURE HOLD)



BASE BLASTING PACKAGE
PORTABLE ABRASIVE BLASTER, 150 PSI (10.3 BAR), PRESSURE HOLD SYS, PNEUMATIC, INCL: APV METERING VALVE W/URETHANE SLEEVE/AUTO AIR VALVE, MOISTURE SEPARATOR, 55' TWINLINE ASSY & CONTROL HANDLE #2

PART NUMBERS
1.5 - 0131-326-01A
3.5 - 0331-326-01A
6.5 - 0531-327-01A



BRONZE BLASTING PACKAGE
PORTABLE ABRASIVE BLASTER, 150 PSI (10.3 BAR), PRESSURE HOLD SYS, PNEUMATIC, INCL: APV METERING VALVE W/URETHANE SLEEVE/AUTO AIR VALVE, MOISTURE SEPARATOR, 55' TWINLINE ASSY, CONTROL HANDLE #2 & BLAST HOSE W/NOZZLE

PART NUMBERS
1.5 - 0131-326-01B
3.5 - 0331-326-01B
6.5 - 0531-327-01B



SILVER BLASTING PACKAGE
PORTABLE ABRASIVE BLASTER, 150 PSI (10.3 BAR), PRESSURE HOLD SYS, PNEUMATIC, INCL: APV METERING VALVE W/URETHANE SLEEVE/AUTO AIR VALVE, MOISTURE SEPARATOR, 55' TWINLINE ASSY, CONTROL HANDLE #2, BLAST HOSE W/NOZZLE, BLAST SUIT, LUXURY DOUBLE PALMED GLOVES & NOVA 2000 RESPIRATOR PACKAGE

PART NUMBERS
1.5 - 0131-326-01C
3.5 - 0331-326-01C
6.5 - 0531-327-01C



GOLD BLASTING PACKAGE
PORTABLE ABRASIVE BLASTER, 150 PSI (10.3 BAR), PRESSURE HOLD SYS, PNEUMATIC, INCL: APV METERING VALVE W/URETHANE SLEEVE/AUTO AIR VALVE, MOISTURE SEPARATOR, 55' TWINLINE ASSY, CONTROL HANDLE #2, BLAST HOSE W/NOZZLE, BLAST SUIT, LUXURY DOUBLE PALMED GLOVES, NOVA 2000 RESPIRATOR PACKAGE & (2) AIR HOSES TO CONNECT BLASTER AND RESPIRATOR TO AIR SOURCE

PART NUMBERS
1.5 - 0131-326-01D
3.5 - 0331-326-01D
6.5 - 0531-327-01D

NON-PACKAGED BASE UNITS

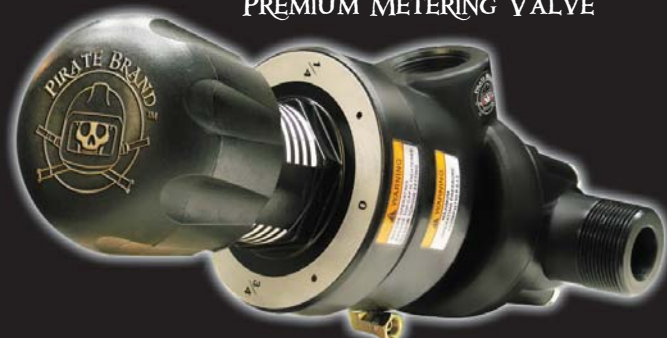
Need electric controls or A long lasting solid tungsten carbide metering valve? We've got you covered.

ELECTRIC CONTROLS



Pirate Brand® SPR and SPH blasters with 12VDC electric remote control systems are a must when you are running more than 100' of blast hose or in sub-freezing temperatures. The electric system reduces the start up and stopping time when using long blast hose runs and are far less likely to freeze up in cold environments. Power supplies are available for when 120VAC power is required.

APVII™ PREMIUM METERING VALVE



The Pirate Brand® APVII™ (Automatic Plunger Valve II) is an extremely tough and well engineered metering valve designed to save you money. The solid tungsten carbide sleeve has a superior wear rate compared to the standard urethane sleeve allowing you to blast longer without replacing parts. Other premium features include a filtered breathing hole, adjustment indicators, and an overall more efficient design with 22% less parts. All these features add-up making the APVII™ a tough, reliable, and simple to use valve.

NON-PACKAGED BASE UNITS



SPR ELECTRIC BLASTER

PORTABLE ABRASIVE BLASTER, 150 PSI (10.3 BAR), PRESSURE RELEASE SYS, ELECTRIC 12VDC INCL: MPV/COMBINATION VALVES, 1" PIPING W/MOISTURE SEPARATOR, 55' CONTROL CORD, 25' POWER CORD & CONTROL HANDLE

PART NUMBERS

1.5 - 0132-126-11
3.5 - 0332-126-11
6.5 - 0532-127-11



SPH PNEUMATIC BLASTER W/APVII

PORTABLE ABRASIVE BLASTER, 150 PSI (10.3 BAR) PRESSURE HOLD SYS, PNEUMATIC INCL: APV II W/TC SLEEVE/AUTO AIR VALVE, 1" PIPING W/MOISTURE SEPARATOR, 55' TWINLINE ASSY & CONTROL HANDLE #2

PART NUMBERS

1.5 - 0131-336-01
3.5 - 0331-336-01
6.5 - 0531-337-01



SPH ELECTRIC BLASTER W/APVII

PORTABLE ABRASIVE BLASTER, 150 PSI (10.3 BAR), PRESSURE HOLD SYS, ELECTRIC 12VDC INCL: APV II W/TC SLEEVE/AUTO AIR VALVE, 1" PIPING W/MOISTURE SEPARATOR, 55' CONTROL CORD, 25' POWER CORD & CONTROL HANDLE

PART NUMBERS

1.5 - 0132-336-01
3.5 - 0332-336-01
6.5 - 0532-337-01



SPH ELECTRIC BLASTER W/APV

PORTABLE ABRASIVE BLASTER, 150 PSI (10.3 BAR), PRESSURE HOLD SYS, ELECTRIC 12VDC INCL: APV W/URETHANE SLEEVE/AUTO AIR VALVE, 1" PIPING W/MOISTURE SEPARATOR, 55' CONTROL CORD, 25' POWER CORD & CONTROL HANDLE

PART NUMBERS

1.5 - 0132-326-01
3.5 - 0332-326-01
6.5 - 0532-327-01

BIG GUN™ PORTABLE SYSTEMS



High Productivity Portable Blasting

Pirate Brand® Blasters equipped with the BIG GUN™ Full Flow System are designed to give you the best production possible by eliminating restriction in the blaster's air flow. Remember, for every 1 PSI of pressure lost or gained in abrasive blasting, there is a 1.5% loss or gain in productivity.

Both SPR and SPH models are equipped with 1 1/2" zero-pressure-drop piping and a full-port blast hose connection to make the most of your air source. Additionally, SPH models are supplied with an oversized Full-Flow Auto Air Valve and come standard with the APVII™ Premium Metering Valve. The BIG GUN™ Full Flow System is also a must for blasting with large bore #7 & #8 nozzles. The bottom line is the more air you can move through your blaster, the more productive you will be.



Full-Flow Auto Air Valve



Full-Port Connection & APVII

BIG GUN™ PORTABLE SYSTEMS



SPR BIG GUN™ PNEUMATIC BLASTER

PORTABLE ABRASIVE BLASTER, 6.5 CU. FT. (185 LITERS), 150 PSI (10.3 BAR), PRESSURE RELEASE SYS, ELECTRIC 12VDC INCL: MPV/COMBINATION VALVES, 1-1/2" PIPING BIG GUN FULL FLOW SYSTEM W/MOISTURE SEPARATOR, 55' CONTROL CORD, 25' POWER CORD & CONTROL HANDLE

PART NUMBERS

6.5 - 0531-129-11



SPR BIG GUN™ ELECTRIC BLASTER

PORTABLE ABRASIVE BLASTER, 6.5 CU. FT. (185 LITERS), 150 PSI (10.3 BAR), PRESSURE RELEASE SYS, ELECTRIC 12VDC INCL: MPV/COMBINATION VALVES, 1-1/2" PIPING BIG GUN FULL FLOW SYSTEM W/MOISTURE SEPARATOR, 55' CONTROL CORD, 25' POWER CORD & CONTROL HANDLE

PART NUMBERS

6.5 - 0532-129-11



SPH BIG GUN™ PNEUMATIC BLASTER W/APVII

PORTABLE ABRASIVE BLASTER, 6.5 CU. FT. (185 LITERS), 150 PSI (10.3 BAR), PRESSURE HOLD SYS, PNEUMATIC, INCL: APV II W/TC SLEEVE/AUTO AIR VALVE, 1-1/2" PIPING BIG GUN FULL FLOW SYSTEM, W/MOISTURE SEPARATOR, 55' TWINLINE ASSY & CONTROL HANDLE #2

PART NUMBERS

6.5 - 0531-339-01



SPH BIG GUN™ ELECTRIC BLASTER W/APVII

PORTABLE ABRASIVE BLASTER, 6.5 CU. FT. (185 LITERS), 150 PSI (10.3 BAR), PRESSURE HOLD SYS, ELECTRIC 12VDC INCL: APV II W/TC SLEEVE/AUTO AIR VALVE, 1-1/2" PIPING BIG GUN FULL FLOW SYSTEM, W/MOISTURE SEPERTOR, 55' CONTROL CORD, 25' POWER CORD & CONTROL HANDLE

PART NUMBERS

6.5 - 0532-339-01

BIG GUN™ STATIONARY SYSTEMS

Top Quality Abrasive Blasters for your Blast Room featuring the BIG GUN™ Full-Flow System.



The Pirate Brand® Line of Stationary Abrasive Blasters are your ticket to highly efficient blast room blasting. Just like their portable counterparts, the stationary BIG GUN™ Blasters are designed to give you the best production possible by eliminating restriction in the blaster's air flow. Remember, for every 1 PSI of pressure lost or gained in abrasive blasting, there is a 1.5% loss or gain in productivity.

They are equipped with 1½" zero-pressure-drop piping and a full-port blast hose connection to make the most of your air source. The BIG GUN™ Full Flow System is also a must for blasting with large bore #7 & #8 nozzles. The bottom line is the more air you can move through your blaster, the more productive you will be.

Stationary S-Series Blasters can be ordered in a variety of configurations including standard pneumatic or electric controls, or with an abrasive cut-off system. They also come standard with an adjustable abrasive umbrella to prevent excessive load directly on the pop-up and a Union-End Ball-Valve at the metering valve connection for quick and easy, no-mess maintenance.



Optional Job Timer



Adjustable Abrasive Umbrella



Full-Port Connection & APVII

BIG GUN™ STATIONARY SYSTEMS



SPR BIG GUN™ PNEUMATIC BLASTER

PORTABLE ABRASIVE BLASTER, 6.5 CU. FT. (185 LITERS), 150 PSI (10.3 BAR), PRESSURE RELEASE SYSTEM, PNEUMATIC, 54" OAH, INCL: 9" UMBRELLA, MPV/COMBINATION VALVE, UNION END BALL VALVE, 1-1/2" PIPING W/MOISTURE SEPARATOR, 55' TWINLINE ASSY & CONTROL HANDLE #2

PART NUMBERS

6.5
0431-129-11-S-UE



SPR BIG GUN™ PNEUMATIC BLASTER W/APVII & ABRASIVE CUTOFF

PORTABLE ABRASIVE BLASTER, 6.5 CU. FT. (185 LITERS), 150 PSI (10.3 BAR), PRESSURE RELEASE SYSTEM, PNEUMATIC, 54" OAH, INCL: 9" UMBRELLA, APV II W/TCSLEEVE/COMBINATION VALVE, W/15' BLOWDOWN HOSE ASSY, UNION END BALL VALVE, 1-1/2" PIPING W/MOISTURE SEPARATOR, 55' TWINLINE ASSY W/ ABRASIVE CUTOFF & CONTROL HANDLE #2

PART NUMBERS

6.5
0431-339-11-S-UE-ACO



SPR BIG GUN™ PNEUMATIC BLASTER W/APVII & PALM-BUTTON ABRASIVE CUTOFF

PORTABLE ABRASIVE BLASTER, 6.5 CU. FT. (185 LITERS), 150 PSI (10.3 BAR), PRESSURE RELEASE SYSTEM, PNEUMATIC, 54" OAH, INCL: 9" UMBRELLA, APV II W/TC SLEEVE/COMBINATION VALVE, W/15' BLOWDOWN HOSE ASSY, UNION END BALL VALVE, 1-1/2" PIPING W/MOISTURE SEPARATOR, 55' TWINLINE ASSY W/PALM BUTTON ABRASIVE CUTOFF & CONTROL HANDLE #2

PART NUMBERS

6.5
0431-339-11-S-UE-PBACO



SPR BIG GUN™ ELECTRIC BLASTER

PORTABLE ABRASIVE BLASTER, 6.5 CU. FT. (185 LITERS), 150 PSI (10.3 BAR), PRESSURE RELEASE SYS, ELECTRIC 12VDC, 54" OAH, INCL: 9" UMBRELLA, MPV/COMBINATION VALVES, UNION END BALL VALVE, 1-1/2" PIPING W/MOISTURE SEPARATOR, 55' CONTROL CORD, 25' POWER CORD & CONTROL HANDLE

PART NUMBERS

6.5
0432-129-11-S-UE



SPR BIG GUN™ ELECTRIC BLASTER W/APVII & ABRASIVE CUTOFF

PORTABLE ABRASIVE BLASTER, 6.5 CU. FT. (185 LITERS), 150 PSI (10.3 BAR), PRESSURE RELEASE SYS, ELECTRIC 12VDC, 54" OAH, INCL: 9" UMBRELLA, APV II W/TC SLEEVE/COMBINATION VALVE, W/15' BLOWDOWN HOSE ASSY, UNION END BALL VALVE, 1-1/2" PIPING W/MOISTURE SEPARATOR, 55' CONTROL CORD W/ABRASIVE CUTOFF, 25' POWER CORD & CONTROL HANDLE

PART NUMBERS

6.5
0432-339-11-S-UE-ACO



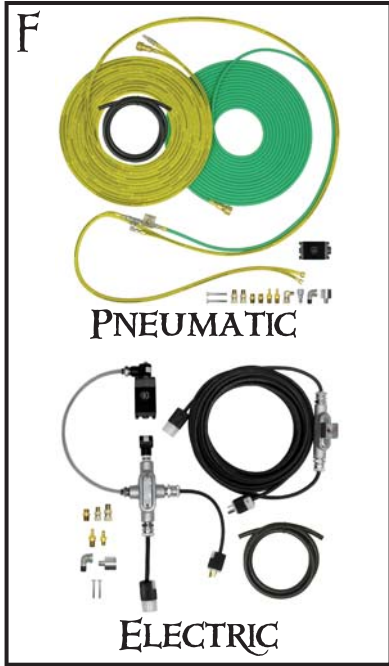
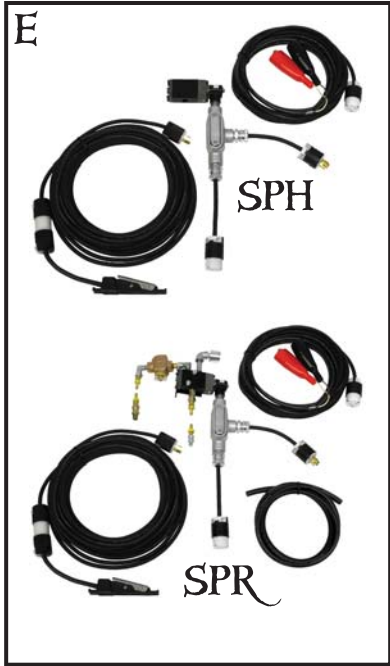
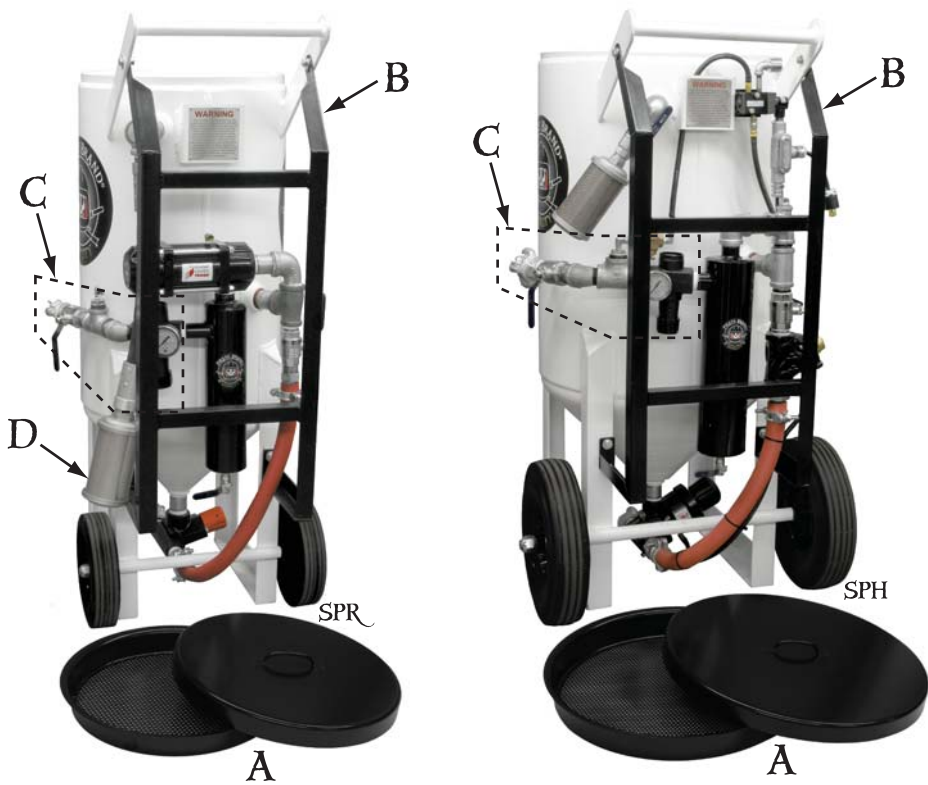
SPR BIG GUN™ ELECTRIC BLASTER W/APVII & PALM-BUTTON ABRASIVE CUTOFF

PORTABLE ABRASIVE BLASTER, 6.5 CU. FT. (185 LITERS), 150 PSI (10.3 BAR), PRESSURE RELEASE SYS, ELECTRIC 12VDC, 54" OAH, INCL: 9" UMBRELLA, APV II W/TC SLEEVE/COMBINATION VALVE, W/15' BLOWDOWN HOSE ASSY, UNION END BALL VALVE, 1-1/2" PIPING W/MOISTURE SEPARATOR, 55' CONTROL CORD, 25' PALM BUTTON ABRASIVE CUTOFF CORD ASSY, 25' POWER CORD & CONTROL HANDLE

PART NUMBERS

6.5
0432-339-11-S-UE-PBACO

ACCESSORIES



A

LIDS AND SCREENS	
LIDS ARE IMPORTANT FOR KEEPING MOISTURE FROM FALLING INTO THE ABRASIVE BLASTER IN OUTDOOR APPLICATIONS. MOISTURE IN THE ABRASIVE BLASTER CAN CAUSE OBSTRUCTIONS IN THE METERING VALVE LEADING TO COSTLY DOWN-TIME.	
SCREENS ARE IMPORTANT FOR KEEPING FOREIGN OBJECTS FROM FALLING INTO THE ABRASIVE BLASTER. FOREIGN OBJECTS IN THE ABRASIVE BLASTER CAN CAUSE OBSTRUCTIONS IN THE METERING VALVE LEADING TO COSTLY DOWN-TIME.	
5010-010	LID FOR 1.5 ABRASIVE BLASTERS
5011-010	SCREEN FOR 1.5 ABRASIVE BLASTERS
5010-030	LID FOR 3.5 ABRASIVE BLASTERS
5011-030	SCREEN FOR 3.5 ABRASIVE BLASTERS
5010-060	LID FOR 6.5 ABRASIVE BLASTERS
5011-060	SCREEN FOR 6.5 ABRASIVE BLASTERS

B

LOADING SKIDS	
LOADING SKIDS SERVE TWO IMPORTANT PURPOSES. THEY ALLOW FOR PORTABLE ABRASIVE BLASTERS TO BE LOADED AND TRANSPORTED ON THEIR BACK MAKING THEM MUCH EASIER TO TRANSPORT. LOADING SKIDS ALSO SHIELD THE PIPE STRING PROTECTING YOUR INVESTMENT.	
7002-003	LOADING SKID/ VALVE GUARD 3 BAG, POWDER COATED BLACK
7002-006	LOADING SKID/ VALVE GUARD 6 BAG, POWDER COATED BLACK

C

REGULATOR KITS	
ADDING A REGULATOR KIT TO YOUR ABRASIVE BLASTER WILL ALLOW YOU TO BLAST AT LOWER PRESSURES TO ACHIEVE CUSTOM FINISHES OR USE IN CUSTOM APPLICATIONS	
2003-006CI	1" REGULATOR KIT
2003-007CI	1-1/4" REGULATOR KIT
2003-008CI	1-1/2" REGULATOR KIT
2003-007-99	REPAIR KIT FOR 1", 1-1/4" & 1-1/2" REGULATORS

D

SPR MUFFLER	
INSTALLING A BLOW-DOWN MUFFLER TO YOUR SPR SERIES ABRASIVE BLASTER WILL REDUCE THE NOISE GENERATED AT BLOW-DOWN. IT WILL ALSO DIFFUSE THE BLAST OF AIR THAT IS RELEASED.	
2011-007CI	BLOW-DOWN MUFFLER KIT FOR SPR (PRESSURE RELEASE) ABRASIVE BLASTERS

E

ELECTRIC CONV. KIT	
CONVERT YOUR PNEUMATICALLY CONTROLLED SPR OR SPR SERIES ABRASIVE BLASTER TO ELECTRIC. ELECTRIC REMOTE CONTROLS ARE RECOMMENDED IF YOU RUN OVER 100 FEET OF BLAST HOSE OR WHEN BLASTING IN COLD WEATHER.	
0004-410	PNEUMATIC TO ELECTRIC CONVERSION KIT FOR SPR SERIES ABRASIVE BLASTERS
0005-410	PNEUMATIC TO ELECTRIC CONVERSION KIT FOR SPR SERIES ABRASIVE BLASTERS

F

ABRASIVE CUT-OFF CONV. KIT FOR SPR	
ADD AN ABRASIVE CUT-OFF CONVERSION KIT TO YOUR SPR SERIES ABRASIVE BLASTER ALLOWING YOU TO BLOW OFF YOUR PROJECT WITH THE SAME HIGH VELOCITY AIR YOU BLAST WITH	
2035-001-01	55' PNEUMATIC ABRASIVE CUT-OFF CONVERSION KIT FOR SPR SERIES ABRASIVE BLASTERS
2035-101-01	55' ELECTRIC ABRASIVE CUT-OFF CONVERSION KIT FOR SPR SERIES ABRASIVE BLASTERS

G

JOB TIMER	
KEEP TRACK OF TIME SPENT ON A JOB AND TOTAL HOURS ON YOUR ABRASIVE BLASTER. KNOW YOUR COST, CONTROL YOUR COST & SET UP A PREVENTATIVE MAINTENANCE PROGRAM FOR YOUR BLAST EQUIPMENT.	
PB-9805023	DUAL TIMER CONTROL BOX W/ KEY RESET & MOUNTING BRACKET

H

120AC POWER SUPPLY	
ALLOWS 12VDC ELECTRIC BLASTERS TO BE USED WITH STANDARD 120AC OUTLETS.	
PB-SMP3WP	POWER SUPPLY 120AC INPUT/12VDC @ 2.5 AMP OUTPUT

I

AIR HOSE	
10-034RED-050-1	3/4" AIR HOSE ASSEMBLY, 50'
10-100RED-025-1	1" AIR HOSE ASSEMBLY, 25'
10-100RED-050-1	1" AIR HOSE ASSEMBLY, 50'
10-112RED-025-1	1-1/2" AIR HOSE ASSEMBLY, 25'
10-112RED-050-1	1-1/2" AIR HOSE ASSEMBLY, 50'
27WT-1	SAFETY CABLE, 3/4" HOSE TO EQUIP.
27WC-1	SAFETY CABLE, 3/4" HOSE TO HOSE.
27WT-2	SAFETY CABLE, 1" & 1-1/2" HOSE TO EQUIP.
27WC-2	SAFETY CABLE, 1" & 1-1/2" HOSE TO HOSE.

J

BLAST HOSE	
Nozzles Not Included	
10-034BLK-050-3AL	3/4" BLAST HOSE ASSEMBLY, 50', INCLUDES NOZZLE HOLDER
10-100BLK-050-3AL	1" BLAST HOSE ASSEMBLY, 50', INCLUDES NOZZLE HOLDER
10-114BLK-050-3AL	1-1/4" BLAST HOSE ASSEMBLY, 50', INCLUDES NOZZLE HOLDER
10-114BLK-050-3XAL	1-1/4" BIG GUN BLAST HOSE ASSEMBLY, 50', INCLUDES NOZZLE HOLDER
10-034BLK-050-4AL	3/4" EXTENSION HOSE ASSEMBLY, 50'
10-100BLK-050-4AL	1" EXTENSION HOSE ASSEMBLY, 50'
10-114BLK-050-4AL	1-1/4" EXTENSION HOSE ASSEMBLY, 50'
10-114BLK-050-4XAL	1-1/4" BIG GUN EXTENSION HOSE ASSEMBLY, 50'
27WT-2	SAFETY CABLE, 1" & 1-1/4" HOSE TO EQUIP.
27WC-15	SAFETY CABLE, ALL BLAST HOSE TO HOSE.

K

NOZZLES	
1" ENTRY NOZZLES FOR USE WITH 3/4" BLAST HOSE	
1201-1172	#3 TUNGSTEN CARBIDE NOZZLE
1201-1173	#4 TUNGSTEN CARBIDE NOZZLE
1" ENTRY NOZZLES FOR USE WITH 1" BLAST HOSE	
1201-1173	#4 TUNGSTEN CARBIDE NOZZLE
1201-1174	#5 TUNGSTEN CARBIDE NOZZLE
1201-1175	#6 TUNGSTEN CARBIDE NOZZLE
1-1/4" ENTRY NOZZLES FOR USE WITH 1-1/4" BLAST HOSE	
1348-555	#5 TUNGSTEN CARBIDE NOZZLE
1348-556	#6 TUNGSTEN CARBIDE NOZZLE
1348-557	#7 TUNGSTEN CARBIDE NOZZLE
1348-558	#8 TUNGSTEN CARBIDE NOZZLE

L

BREATHING EQUIPMENT	
407000-PFC	NOVA 2000™ RESPIRATOR PACKAGE
407800-PFC	ASTRO™ RESPIRATOR PACKAGE
407007	COOL TUBE
407024	HOT TUBE
407200	RADEX™ CO MONITOR (120V)
407201	RADEX™ CO MONITOR (12V)
RESPIRATOR PACKAGES INCLUDE RESPIRATOR HELMET, 50' BREATHING AIR SUPPLY HOSE, AND RADEX™ AIRLINE FILTER.	

M

AIR DRYERS	
1310-021	AIR DRYER ADPB-250 CFM @ 100 PSIG OR 359 CFM @ 150 PSIG
1310-041	AIR DRYER ADPB-400 CFM @ 100 PSIG OR 574 CFM @ 150 PSIG
1310-071	AIR DRYER ADPB-750/950, 800 CFM @ 100 PSIG OR 1149 CFM @ 150 PSIG
1310-121	AIR DRYER ADPB-1200 CFM @ 100 PSIG OR 1723 CFM @ 150 PSIG
1310-161	AIR DRYER ADPB-1600 CFM @ 100 PSIG OR 2297 CFM @ 150 PSIG

N

BLAST SUITS / GLOVES	
122-9140	BLAST SUIT, LIGHTWEIGHT, MEDIUM
122-9150	BLAST SUIT, LIGHTWEIGHT, LARGE
122-9160	BLAST SUIT, LIGHTWEIGHT, XL
122-9170	BLAST SUIT, LIGHTWEIGHT, XXL
122-9180	BLAST SUIT, LIGHTWEIGHT, XXXL
407701	LUXURY DOUBLE PALMED LEATHER BLASTING/WELDING GLOVES

OPTIONAL EQUIPMENT

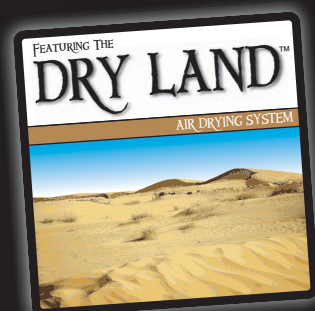




THE S-SERIES

PRODUCT FAMILY

AIR DRYERS & MOISTURE SEPARATORS



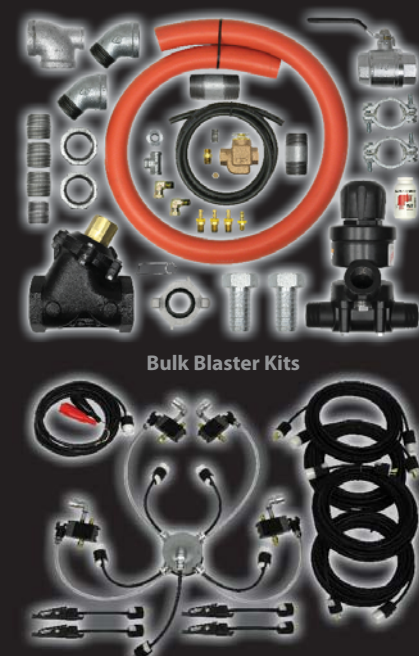
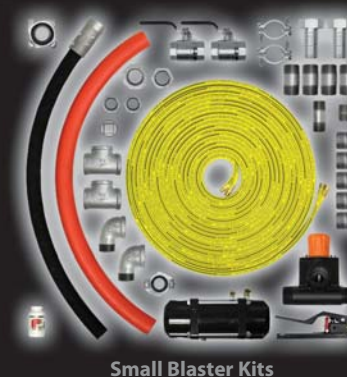
BULK BLASTERS



SODA BLASTERS



CONVERSION KITS



PIRATE BRAND®

About Pirate Brand®

At Pirate Brand®, we know abrasive blasting. We have fused our 80 years of combined experience in the blasting industry with feedback from distributors and end-users to produce abrasive blast equipment and replacement parts that are second to none. In addition to our extensive line of blasting equipment, we also produce a full line of aftermarket replacement parts for other manufacturers that are 100% compatible and equal or better in quality to the original part. We believe in quality, reliability and productivity so we subject all our products to strict quality control testing to ensure the best possible performance is achieved.

**In the tough world of abrasive blasting, quality is crucial,
...and Pirate Brand® delivers.**

