



2000 KW CATERPILLAR DIESEL GENERATORS

Two units available

Caterpillar 3516B

2,000 kW Standby Rating

2500 kVA

480 volts

1800 RPM

2011 and 2013 Year of Manufacture

Diesel

60 Hz

Caterpillar 3516B Engine

8500 and 9200 since new

Excellent condition

The enclosure is custom built, but it has the dimensions of a 40' container.

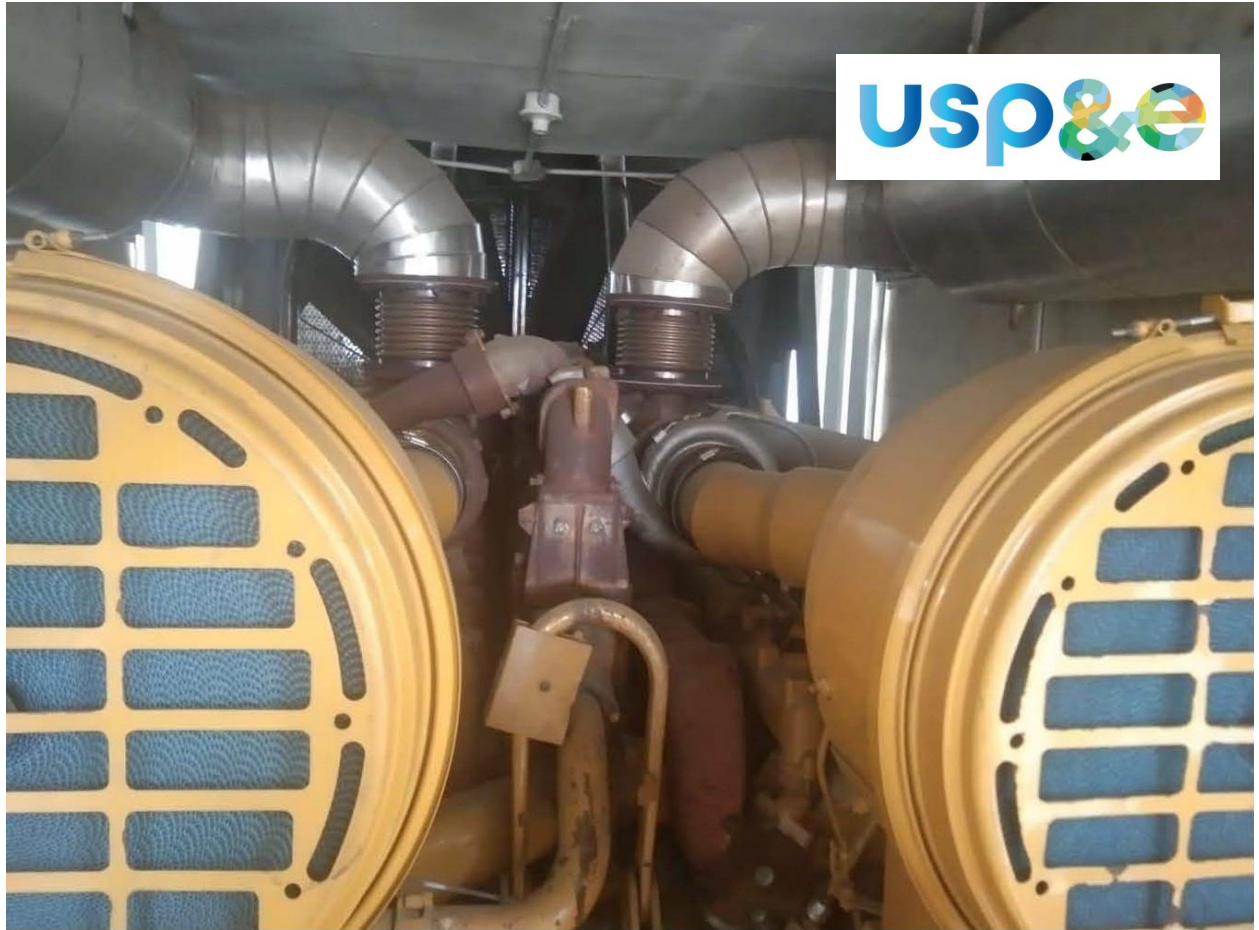
**Sound Attenuated Enclosure complete with EMCP 3.1 control panel, space heater, 24V electric starting motor, air cleaner and radiator. LOW BSFC.
Engine Arrangement: 3259343, Gen end Arrangement: 2523844**

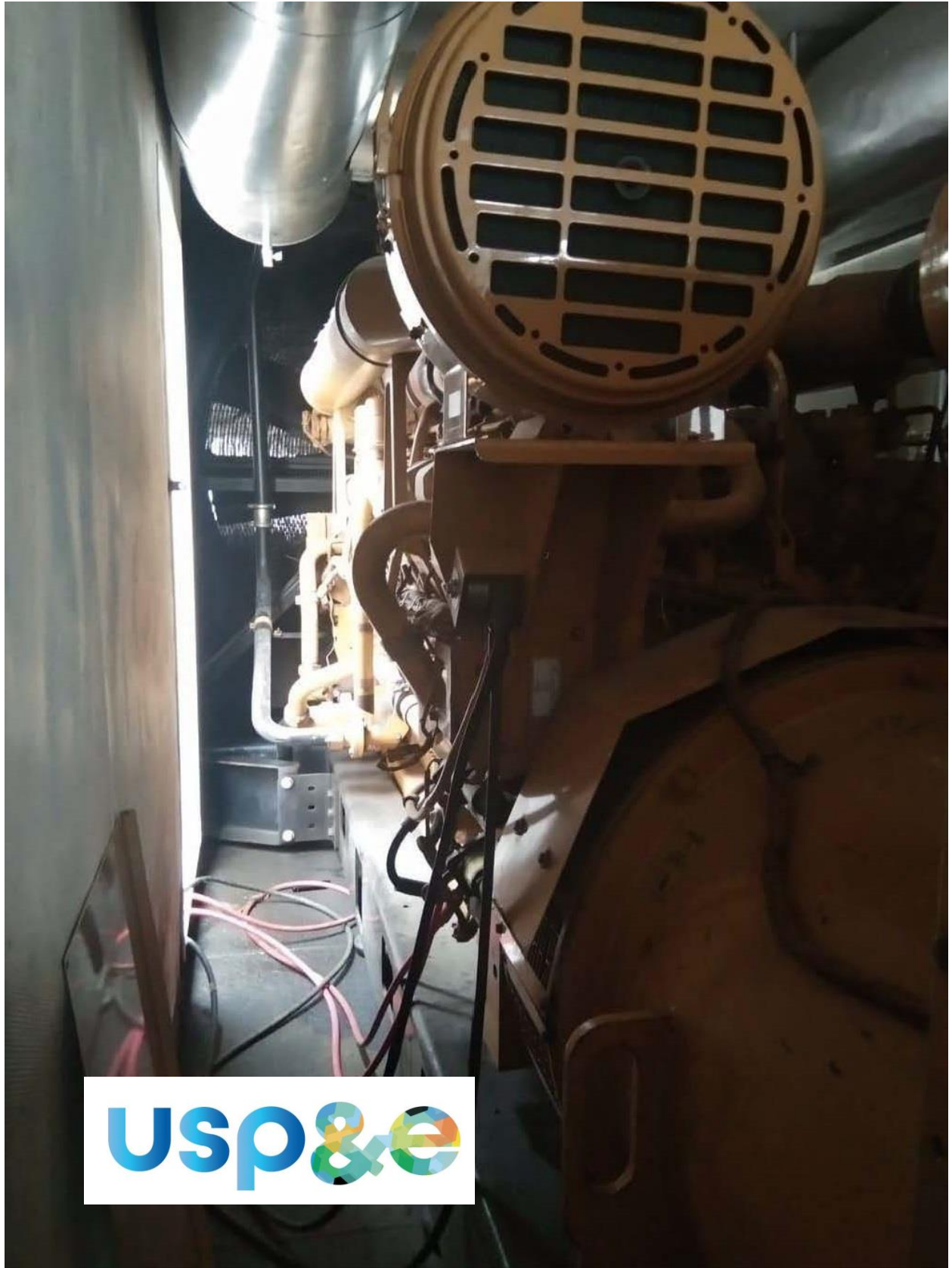


usp&e









usp&e