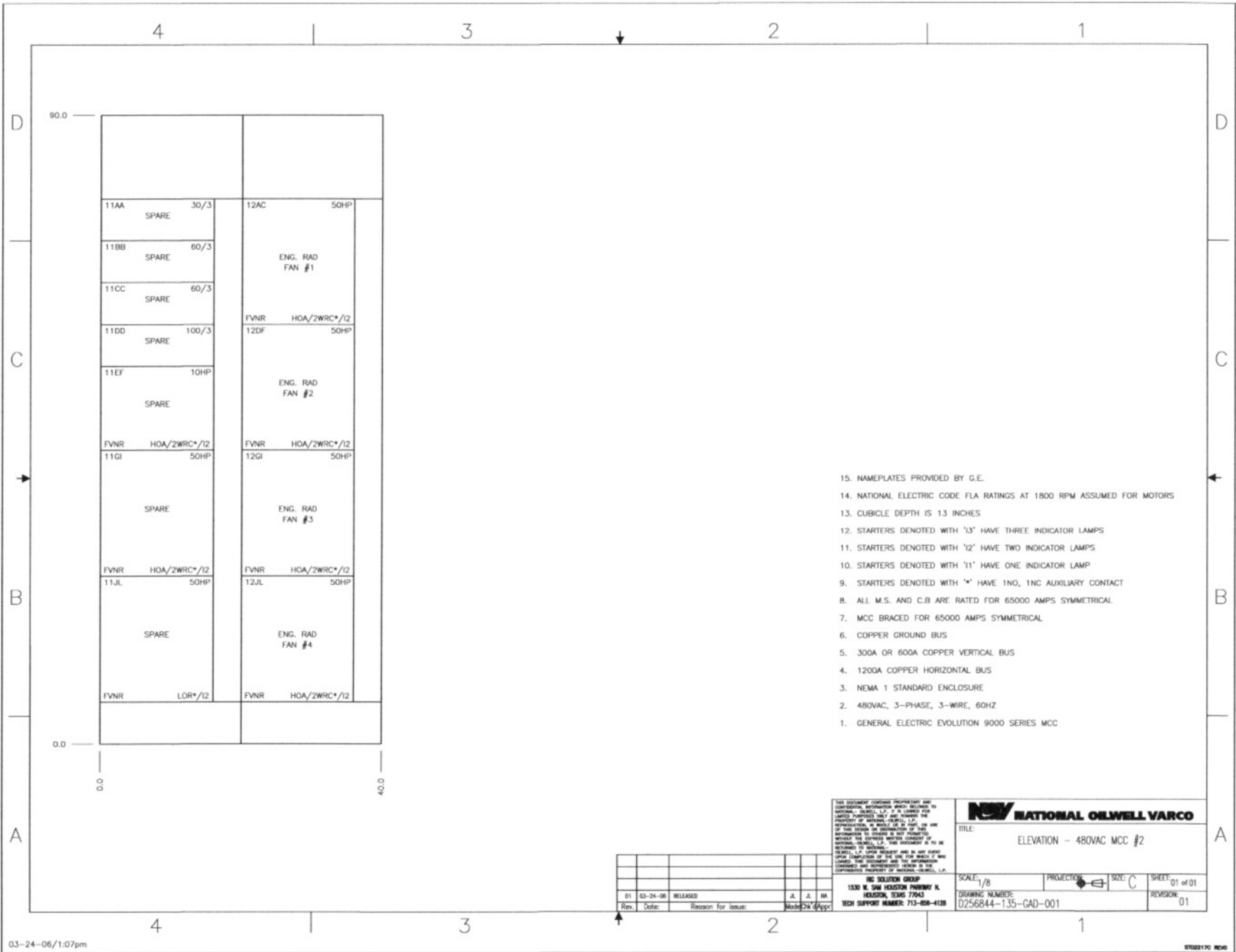


NOTES (UNLESS OTHERWISE SPECIFIED)

NATIONAL OILWELL
 1530 W. SAM HOUSTON PARKWAY N.
 HOUSTON, TEXAS 77043
 PHONE: (713) 467-9888 FAX: (713) 467-7958

DESCRIPTION ELEVATION - 480VAC MCC	SIZE C	DRAWING NUMBER 0256844-135-GAD-000
REFER TO SHEET ONE FOR DRAWING REVISION RECORD AND GENERAL INFORMATION.	SCALE 1/8	REV SHEET 2 OF 2 01



15. NAMEPLATES PROVIDED BY G.E.
14. NATIONAL ELECTRIC CODE FLA RATINGS AT 1800 RPM ASSUMED FOR MOTORS
13. CUBICLE DEPTH IS 13 INCHES
12. STARTERS DENOTED WITH '13' HAVE THREE INDICATOR LAMPS
11. STARTERS DENOTED WITH '12' HAVE TWO INDICATOR LAMPS
10. STARTERS DENOTED WITH '11' HAVE ONE INDICATOR LAMP
9. STARTERS DENOTED WITH '*' HAVE 1NO, 1NC AUXILIARY CONTACT
8. ALL M.S. AND C.B ARE RATED FOR 65000 AMPS SYMMETRICAL
7. MCC BRACED FOR 65000 AMPS SYMMETRICAL
6. COPPER GROUND BUS
5. 300A OR 600A COPPER VERTICAL BUS
4. 1200A COPPER HORIZONTAL BUS
3. NEMA 1 STANDARD ENCLOSURE
2. 480VAC, 3-PHASE, 3-WIRE, 60HZ
1. GENERAL ELECTRIC EVOLUTION 9000 SERIES MCC



TITLE: ELEVATION - 480VAC MCC #2

SCALE: 1/8 PROJECTOR SIZE: C SHEET: 01 of 01
 DRAWING NUMBER: D256844-1.35-CAD-001 REVISION: 01

Rev.	Date	Reason for Issue	Mod.	By	Appr.
01	03-24-06	RELEASED		J. J. BA	

REV. SOLUTION GROUP
 1530 N. SHAW HEDDING PARKWAY N.
 HOUSTON, TEXAS 77043
 TECH SUPPORT NUMBER: 713-658-4128

NOTES (PLEASE OBSERVE SPECIES)
NET/OT/AL OMBELT VARCO
 1500 W. SHAW HOUSTON PARKWAY N.
 HOUSTON, TEXAS 77043
 PHONE: (713) 487-8888 FAX: (713) 487-7888
 DESCRIPTION: _____
 SIZE: _____
 DRAWING NUMBER: 10859-30
 REVISION: _____
 1/4" SCALE
 SHEET 2 OF 2
 ZD

