

OLYMPUS[®]

Your Vision, Our Future



EVIS EXERA COLONOVIDEOSCOPE
OLYMPUS CF TYPE Q160ZL/I

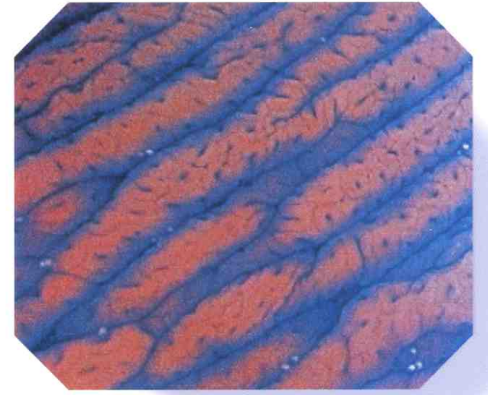
ADVANCED POWER ZOOM

Featuring a leading-edge miniature actuator built into its tip, this scope provides controller-operated zoom capability with 150X* magnification for precision close-up observation when and where you need it.

* When images are displayed on a 20-inch monitor

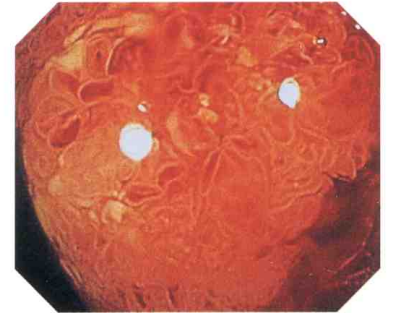
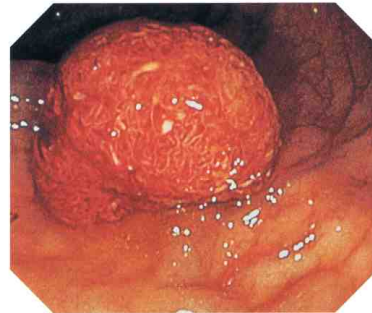


Built-in actuator and precision optics provide smooth, power zoom capability with crystal-clear, high-resolution images at up to 150X*



Powerful 150X* maximum magnification supported by high-resolution CCD

Thanks to the incorporation of a high-resolution CCD and an improved optical system, the CF-Q160ZL/I is able to deliver crisp, clear images with outstanding resolution. Even at magnifications as high as 150X*, you'll get none of the annoying graininess produced by electronically enhanced zooms, while uniform brightness is ensured throughout the magnification range, from wide angle to telephoto. This makes it easy for you to clearly observe structures of the mucous membrane in the lower digestive tract.

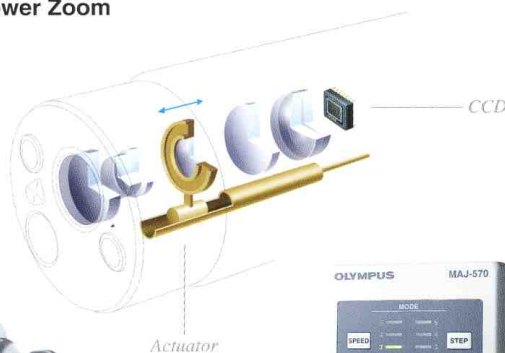


Advanced miniature actuator built in for controller-operated power zoom capability

Olympus's pursuit of leading-edge micromachine technology has made it possible for us to incorporate a sophisticated miniature actuator into the tip of the CF-Q160ZL/I. The result is a precision design exclusive to Olympus that

enables lens movement to be fully controlled via a connected magnification controller with power zoom operation which lets you zoom in or out as and when required. One-handed zoom lever operation assures smooth zooms with five selectable zoom speeds for continuous, stable operation or a choice of five preset zoom steps for observation convenience. For even greater flexibility, an optional foot switch enables hands-free zoom operation, allowing you to angulate the scope tip while zooming in and out.

■ Schematic Of Power Zoom



Ergonomically designed control section allows zoom operation with the left hand alone



MAJ-570 Magnification Controller with five selectable zoom speeds and steps



MAJ-574 Foot Switch (optional)



Main Features for Powerful Performance

- Powerful 150X* (max.) zoom magnification delivers detailed close-ups. Superior image quality with large display size provides enhanced details throughout the image plane.
- Miniature actuator built into the scope tip and connected magnification controller for power zoom operation.
- Optional foot switch enables hands-free zoom operation, so you can angulate the scope tip while zooming in and out.
- 12.8 mm outer diameter insertion tube.
- 3.7 mm diameter channel can handle a wide range of treatment requirements and provides high suction capability, even when forceps are used.
- Extra-wide 140° field of view (in WIDE position) and extensive 4-way angulation (180° up/down and 160° right/left).
- Optional disposable distal attachment ensures correct depth of field even when the zoom magnification is set at maximum.
- Ergonomically designed grip enhances scope maneuverability, while redesigned easy-to-access knobs and user-selectable switches improve operability.
- Fully compatible with the CV-160/140.
- Scope ID function stores individual scope information and displays it on the monitor to facilitate endoscopy suite management.

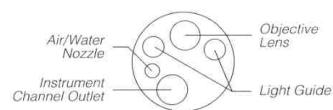
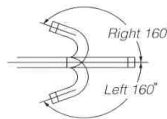
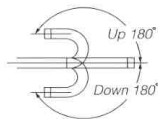


D-201-16403
Distal Attachment
(optional)



Specifications

Optical System	Field of view	140° (in WIDE position) 50° (in TELE position)
	Direction of view	0° Forward viewing
	Depth of field	7 to 100 mm (in WIDE position) 2 to 3 mm (in TELE position)
Distal End	Outer diameter	15.0 mm
Insertion Tube	Outer diameter	12.8 mm
Bending Section	Angulation range	Up 180°, Down 180°, Right 160°, Left 160°
Working Length		L:1680 mm, I:1330 mm
Total Length		L:1990 mm, I:1640 mm
Instrument Channel	Inner diameter	3.7 mm
	Minimum visible distance	7 mm from the distal end (in WIDE position)
Endo-Therapy accessory entrance/exit position in field of view		



* When images are displayed on a 20-inch monitor

Specifications, design and accessories are subject to change without any notice or obligation on the part of the manufacturer.

OLYMPUS[®]

OLYMPUS CORPORATION

2951 Ishikawa-cho, Hachioji-shi, Tokyo 192-8507, Japan

OLYMPUS EUROPA GMBH

Postfach 10 49 08, 20034 Hamburg / Wendenstrasse 14-18, 20097 Hamburg, Germany

OLYMPUS AMERICA INC.

2 Corporate Center Drive, Melville, N.Y. 11747-3157, U.S.A.

OLYMPUS LATIN AMERICA, INC.

6100 Blue Lagoon Drive, Suite 390 Miami, Florida 33126-2087, U.S.A

KEYMED LTD.

Keymed House, Stock Road, Southend-on-Sea, Essex SS2 5QH, England

OLYMPUS SINGAPORE PTE LTD.

491B River Valley Road #12-01/04, Valley Point Office Tower, Singapore 248373

OLYMPUS HONG KONG AND CHINA LIMITED

Room 1520-1527, Ocean Centre, 5 Canton Road, Tsimshatsui, Kowloon, Hong Kong

OLYMPUS BEIJING REPRESENTATIVE OFFICE

Room 1401, East Tower, Gong Yuan No6 Royal Palace, No6 Gong YuanXijie, JianGuoMenNei, DongCheng District, Beijing, 100005, China

OLYMPUS MOSCOW LIMITED LIABILITY COMPANY

117071, Moscow, Malaya Kaluzhskaya 19, bld. 1, fl.2, Russia

OLYMPUS AUSTRALIA PTY LTD.

31 Gilby Road, Mount Waverley, VIC., 3149, Australia

www.olympus.com

Printed in Japan F874SB-0104