



ROCKMASTER

MACHINES YOU NEED. PEOPLE YOU TRUST.



“We know how to process building materials such as rock, gravel, sand or rubble. When we design your machine park, you profit from the experience gained by our technicians and engineers over more than 30 years.”

PETER OPPERMANN





Roads, buildings and every area of construction and civil engineering are vital factors in the economic and social development of a region. Minerals - rock, gravel and sand – are the fundamental construction materials for all these projects. The efficient extraction of resources from natural deposits or recycled products demands highly durable and perfectly tailored technologies.

The German company OPPERMANN & FUSS has designed a comprehensive service package – ROCKMASTER - to assist its customers operating in this sector. We offer competent analysis of the technology requirements. We select and supply plant, machinery and vehicles and are independent of manufacturers. From financing to guaranteeing support services for the plant over many years, we provide reliable assistance and qualify local staff on-site.

OPPERMANN & FUSS was established more than 35 years ago and is one of the leading German suppliers of screening and crushing machines. These comply with high occupational health, safety and environmental standards. Ever since we were founded, we have served customers in many countries and believe we play an important role in securing their long term commercial future.

Best regards


Peter Oppermann
CEO Oppermann & Fuss GmbH

ALL-IN-ONE PACKAGE

A comprehensive package from a single service provider. We plan your machine park, assist you with financing, train staff and supply spare parts. Competent and dependable throughout the service life of your plant. ROCKMASTER from OPPERMANN & FUSS.



01 ANALYSIS & CONSULTING

We visit your site to analyse your technology and logistics requirements. From drilling, blasting, crushing, screening and washing to loading and transportation: our experts have years of experience and recommend the best equipment for your needs. We take account of your long-term goals. We are also independent and free to purchase machinery from any manufacturer.

02 FINANCING & PROCUREMENT

With strong financial partners at our side, we put you in touch with our contacts at German banks. Their confidence in our planning expertise makes it easier for you to finance your projects. Purchasing machines through Oppermann & Fuss has many advantages: terms and conditions tailored to your needs, fast delivery of equipment, service throughout the operating life of the product.

03 SETUP & TRAINING

We engage specialist freight forwarders to deliver your equipment and our technicians are waiting on-site when it arrives. During commissioning, we train local personnel and instruct your employees so they can service and repair the equipment themselves.

04 SUPPORT & SERVICE

Our plants are designed to operate for long periods. Wearing parts, which are required regularly, are provided during commissioning itself. However, we also guarantee future supplies of spare parts over the full service life of the equipment. We also advise you of any pending changes.

01

ANALYSIS & CONSULTING





Values that speak for themselves:
Every type of rock has different
qualities - and requires individual
machines, which are specifically
adapted for optimum processing.

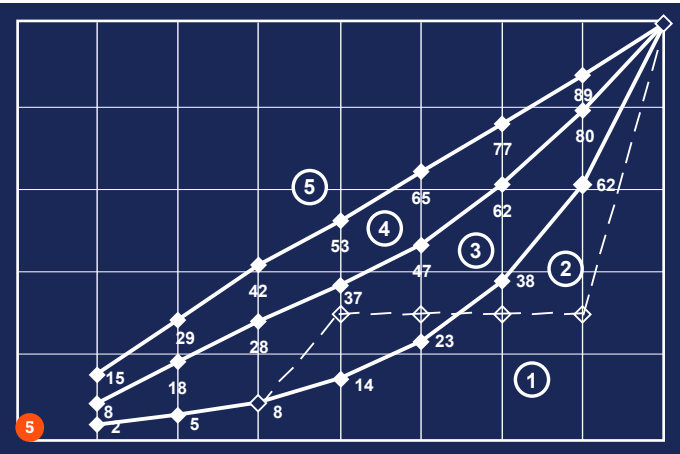
INSPECTION, PLANNING, DECISION MAKING. HOW OUR EXPERTS WORK.

What are you planning to quarry, process or recycle? Which products are needed in your region – and in what quantities? The ROCKMASTER professionals from OPPERMANN & FUSS will design a machine park that is perfectly tailored to your own unique requirements.

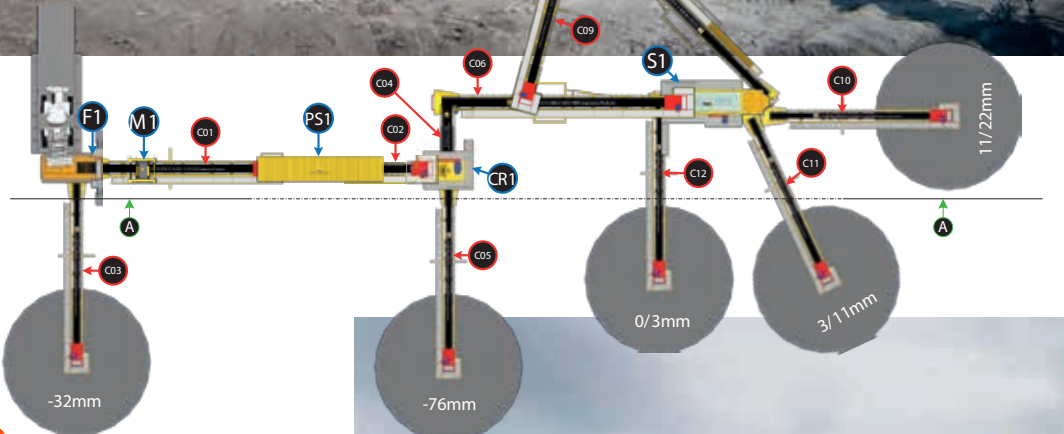
We offer comprehensive analysis and advice. To do this, we visit your site and sample the material. If necessary, we have it evaluated in our partners' laboratories to determine the best way to crush, screen and, where possible, wash it. Selecting cost-effective equipment is one of the top priorities. In addition, we discuss sales targets with our customers. What is the demand profile trend for the product? What additional requirements are expected in the long-term?

This is the foundation we use to design the complete technical setup: blast hole drilling rigs, crushing and screening machines, washing plants and vehicles for conveying, loading and transporting. We fine tune and synchronise all the components for optimum performance. Detailed and prescient planning ensures that the plant capacity can be expanded with further equipment in future or adapted to extract other products.

Over many years and in many countries, we have learned which machines operate reliably in specific climatic conditions. We are an independent company and free to recommend equipment from any manufacturer. We take account of local resources for operation, servicing and maintenance. We supply machinery and equipment from leading manufacturers with a reputation for durability, high safety standards and excellent environmental performance.



- 1 Sand in the lab: We analyse its screening properties before selecting the machines.
- 2 After drilling test holes in various locations, the cores are shipped to a laboratory.
- 3 Material analysis: The silica content and behaviour during crushing determine the rate at which the tools will wear.
- 4 The material is separated according to particle size on a number of screen linings.
- 5 Diagram of the screening lines and assembly. This shows which machines are required to process the raw material.



Listen, discuss, find solutions:
Peter Oppermann's team of
experts plan each project indi-
vidually and have many years
of international experience.



STATIC

Static machines are built on foundations. They are used when high throughput is essential and a wide range of products and large stockpiles are being produced.

MODULAR

Powerful, efficient yet flexible machines are supplied as a modular system on skid mounts. This allows the operator to swap machines at low cost and expand the plant quickly and efficiently.

MOBILE

Mobile machinery is the ideal solution whenever it is necessary to process stone, gravel, sand or rubble at a number of different sites. It is easy to transport and ready to use immediately on delivery.

Hundreds of tonnes of sand are piled into large conical heaps. OPPERMANN & FUSS adapts and optimises all the machines to the required output – from the screening plant to the conveyor belt.



A close-up photograph of a hand holding a silver pen, writing on a document. The background is blurred, showing a person in a suit. The image is partially covered by a bright orange overlay on the right side, which contains the text '02' and 'FINANCING & PROCUREMENT'.

02

FINANCING & PROCUREMENT



Build on trust: We work with our customers on-site to learn about their project and its specific challenges. The effort always pays off.

- 1 All aboard: We can supply machinery and vehicles at short notice.
- 2 Large infrastructure projects depend on strong financial partners. And we bring them with us to finance your machine park.
- 3 Vehicles and machines tie up capital. Our partners, international German banks, assess their value and rate of depreciation.
- 4 All clear: A consultation with us ensures that the machinery you deploy is economically viable.
- 5 Due to its outstanding flexibility, mobile machinery is increasingly being used even in large quarries.



NEGOTIATION, PERSUASION, CONTACTS. REASONS WHY WE ARE GOOD PARTNERS

If necessary, we can put you in touch with our contacts at German banks. Our reputation for reliable and expert planning of machinery requirements opens up access to attractive financing conditions for our customers. Procurement through OPPERMANN & FUSS offers you further advantages.

Specialist and knowledgeable financial partners are the key to investing successfully in machinery. They must be competent in assessing the value and depreciation rate of the equipment, the commercial prospects of the venture and the sector-specific risks. We work with international German banks, which are experts in the industry. We put you in touch with our contacts and assist you during negotiations. These banks respect the comprehensive, competent project planning and reliable customer support services provided by OPPERMANN & FUSS. We therefore improve your negotiating position and help you to obtain financing that is tailored to your needs. Purchasing machinery through us secures still more advantages for our customers. We can supply all machines without significant delays and at excellent terms and conditions. But, above all, we work with the manufacturers to guarantee that your plant runs like clockwork throughout its working life.

Extract, transport, process: The consultation with
OPPERMANN & FUSS strengthens your negotiating position
with banks when financing your machine park.



03

**SETUP
& TRAINING**





Explain and hand over responsibility: As an accredited training company in Germany, we can pass on the know-how of a qualified construction machine mechanic on-site.



- 1 Large modular plants are complex systems. We instruct local employees from the moment we start work.
- 2 Nos experts planifient minutieusement et garantissent ainsi une mise en service sans problèmes.
- 3 Two-in-one: This mobile impact crusher pulverises the rock and then separates it into two products of different particle sizes.
- 4 Excellent prospects: We gain an overview of all your human resources and train employees wherever the need arises.
- 5 The tractor unit brings one of our mobile screening machines to its new location.

STARTUP, GUIDANCE, TRAINING. THE KEYS TO PROMOTING SUSTAINABLE DEVELOPMENT

The commissioning of your machines also marks the start of an intensive process of cooperation. OPPERMANN & FUSS trains your employees to use the equipment correctly so they can operate the plant independently as soon as possible.

We ensure that the plant, equipment and vehicles are delivered in good condition. Our highly trained technicians are on-site to inspect the shipment and commission all the machines. They supervise your local employees until they are able to operate the new technology themselves. Experience has taught us that reliable production processes depend on well-trained staff performing servicing and maintenance at the required intervals. Here, too, you are in good hands. As an accredited training company in Germany, we can pass on the know-how of a qualified construction machine mechanic. On request, we can also train technicians employed by third party service companies operating in the same regions as our customers. Sometimes these relationships last for many years – and contribute not only to the productivity of the machinery but also to the development of regional service providers.



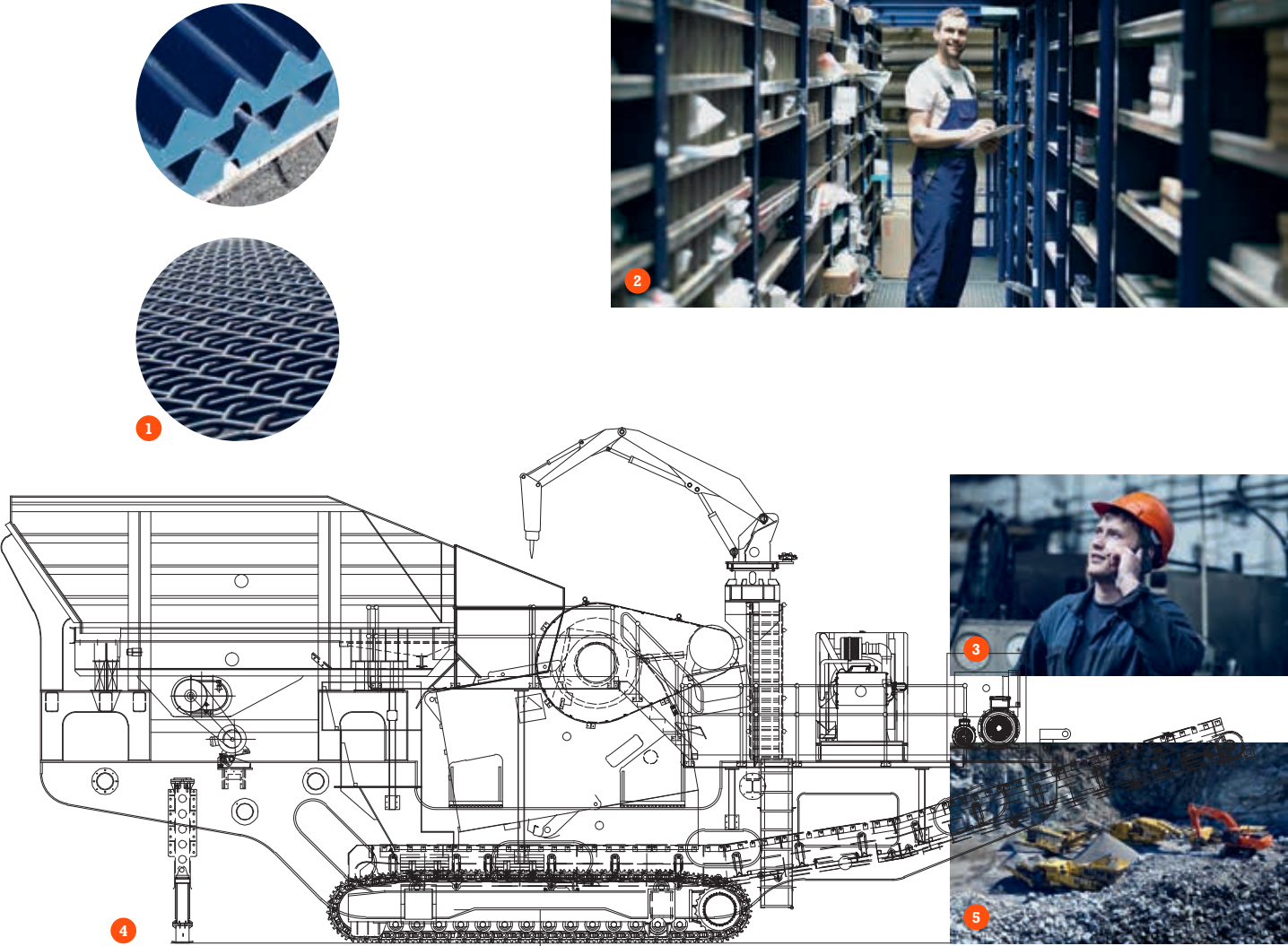
Blasting! The extraction process begins. From now on, all the machines will be in operation. It's reassuring to know that OPPERMANN & FUSS have trained all local employees in occupational health and safety.





04

SUPPORT & SERVICE



- 1 Crusher jaws made from special alloys, screen linings with different mesh sizes: Everything is ready.
- 2 Our central warehouse of spare parts just outside Hamburg is well-stocked.
- 3 Telephone service: We provide instant advice when you urgently need to order parts.
- 4 We supply our customers with exploded assembly drawings, which enable them to identify spare parts quickly.
- 5 Mobile screening and crushing machines from our portfolio.
- 6 We know where to intervene – thanks to years of experience in machine maintenance.



Regular inspections and servicing: We ensure compliance with specified service intervals so your machinery has a long and profitable operating life.

PRODUCTION, MAINTENANCE, MODIFICATION. STILL MORE GOOD REASONS TO TRUST US

OPPERMANN & FUSS supports you throughout the operating life of your machines. We are your contact whenever and whatever questions or problems arise. We keep stocks of spare parts and are always close at hand to assist you in solving problems or addressing new challenges.

We want our customers' machines to have a long and profitable working life. We do the groundwork for minimising downtimes at the earliest stages of the project – during the selection and delivery of the machines. Our training courses ensure that all equipment in use is serviced at regular intervals – if possible by competent regional partners. Ideally, we deliver new machines with a package of wearing and spare parts, which are required in the startup phase. We guarantee long-term availability of spare parts for your entire machine park. As your central contact with a deep understanding of your requirements, we advise you and coordinate deliveries. We keep stocks of all standard spare and wearing parts ready for delivery in our warehouse. And we are not only available by telephone, email or Skype – our experts can also be with you on-site at short notice. We are just as reliable when you need to move your machinery, modify it to take on a new role, replace machinery you no longer require or purchase new additional equipment.

Keep the conveyors rolling: OPFERMANN & FUSS guarantees the availability of both spare parts and know-how for maintaining your machines.



OUR CUSTOMERS

OPPERMANN & FUSS advises, supplies and supports global companies and public institutions, which are involved in construction, civil engineering projects and the extraction of construction materials from natural deposits and recycling. Here is a selection of our customers:

- CEMEX
- Holcim
- HeidelbergCement
- STRABAG
- Basalt AG
- EUROVIA

CONTACT

PUT US TO THE TEST!

Have we aroused your interest in OPPERMANN & FUSS? Then contact us and discover more about our comprehensive ROCKMASTER service package. We value face-to-face discussions and will be happy to visit you, talk about your plans and learn about your challenges. Our highly trained and experienced consultants are waiting for your call. We look forward to hearing from you!

OPPERMANN & FUSS GMBH
CARL-ZEISS-STRASSE 10
D-25451 QUICKBORN
GERMANY

Tel. +49 (0) 4106 7782 0
Fax +49 (0) 4106 7782 20
Email INFO@OPPERMANN-FUSS.DE
Web WWW.OPPERMANN-FUSS.COM

IMPRINT

PUBLISHER
Responsible for the content: Peter Oppermann,
OPPERMANN & FUSS GMBH

CONCEPT & PROJECT MANAGEMENT
Janine Weitenauer

TEXT & EDITORIAL
Matthias Lambrecht and Holger Radloff, TOE KOM

TRANSLATION ENGLISH
Edward Westerdale

TRANSLATION FRENCH
Schnitzlein-Text

LAYOUT
Manuel Borst and Sinja Schwarz, Janine Weitenauer – Creative Minds

PICTURE EDITING
Sinja Schwarz, Janine Weitenauer – Creative Minds

PORTRAIT PETER OPPERMANN
Mark Seelen, Mark Seelen Photography

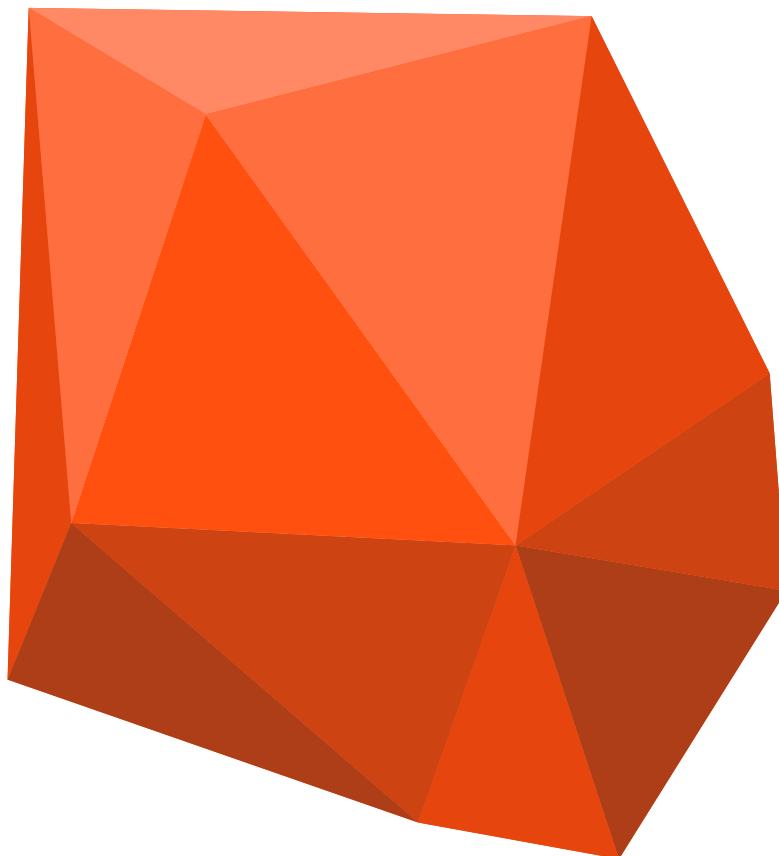
POSTPRODUCTION
Johannes Häussler, Mark Seelen Photography

PRINT
Bertheau Druck

PHOTO CREDITS

PAGE 2-3 O&F, [zmeel/istockphoto.com](#), [Dmitriy Sudzerovskiy/Shutterstock.com](#), [wawritto/Shutterstock.com](#), [bradley/istockphoto.com](#), [suze/photocase.com](#), [Matva/Shutterstock.com](#), [industrieblick/Fotolia.com](#) **PAGE 4-5** [Oleg Kormushin/Dreamstime.com](#) **PAGE 6** [Mark Seelen](#) **PAGE 10** Masterfile Royalty Free **PAGE 12 1:** [Romko_chuk/istockphoto.com](#), [2: 123313711/istockphoto.com](#), [3: zmeel/istockphoto.com](#), [4+5: O&F](#) **PAGE 13** [Jaromir Chalabala/Shutterstock.com](#) **PAGE 14 1-4:** [O&F](#), [5: MrVitkin/Shutterstock.com](#) **PAGE 15** [Mark Seelen](#), [6: O&F](#) **PAGE 16-17** [BanksPhotos/istockphoto.com](#) **PAGE 18** [vm/istockphoto.com](#) **PAGE 20 1:** [Dmitriy Sudzerovskiy/Shutterstock.com](#), [2: asterix0597/istockphoto.com](#), [3: Marc Xavier/Fotolia.com](#), [4: sevenke/Shutterstock.com](#), [5: bradley/istockphoto.com](#) **PAGE 21** [Mark Seelen](#) **PAGE 22-23** [suze/photocase.com](#) **PAGE 24** [Susan Chiang/istockphoto.com](#) **PAGE 26 1+3+5:** [O&F](#), [2: Mark Seelen](#), [4: wawritto/Shutterstock.com](#) **PAGE 27** [michaeljung/istockphoto.com](#) **PAGE 28-29** [Dmitri Melnik/Shutterstock.com](#) **PAGE 30** [BlakeDavidTaylor/istockphoto.com](#) **PAGE 32 1+4+5:** [O&F](#), [2: industrieblick/Fotolia.com](#), [3: Matva/Shutterstock.com](#), [6: Dmitry Kalinovsky/Shutterstock.com](#) **PAGE 33 O&F** **PAGE 34-35 O&F** **PAGE 38-39** [O&F](#), [zmeel/istockphoto.com](#), [Dmitriy Sudzerovskiy/Shutterstock.com](#), [wawritto/Shutterstock.com](#), [bradley/istockphoto.com](#), [suze/photocase.com](#), [Matva/Shutterstock.com](#), [industrieblick/Fotolia.com](#)





ROCKMASTER

MACHINES YOU NEED. PEOPLE YOU TRUST.