

Machine Specifications - Gen II 3/4 Loader/Full Automation Transition Table

Description: Machine specifications should be used by customers and Field Service Engineers during initial phases of printer and component logistics planning.

Affected Printers: VUTEk h3 & h5, HS125 Pro, HS100 Pro, VUTEk LX3 Pro (GS3LX)

Machine Specifications


Use these specifications when planning an automated media installation with any compatible hybrid printer.

ITS-00111, Rev. I

Required Tools, Materials and Documents

OMM-00047	Inkjet Solutions Safety Guide	https://inkjet.support.efi.com/doc.php?doc=683
-----------	-------------------------------	---

Safety Information

	GENERAL	A trained operator must attend the printer at all times during operation. Without the immediate intervention of a trained operator, small problems and failures during printing can create safety hazards as well as the potential for severe damage to your printer.
---	----------------	---

Revision History

12/22/2014	Rev. A	Released
4/8/2016	Rev. B	Updated
5/6/2016	Rev. C	Updated Electrical specifications, table 4, [360-528 VAC @ 30A (3 Phase)]
5/27/2016	Rev. D	Added Automation Overview pages
10/11/2016	Rev. E	Change wire configuration from 5 wire to 4 wire; see Electrical Specifications .
11/21/2016	Rev. F	<ul style="list-style-type: none"> Added missing site plans to pdf including 3/4/Full Automation System One site requirements on last page Changed word "width" to size in 3. Media Specifications
9/14/2017	Rev. G	<ul style="list-style-type: none"> Added LX3 Printer automation
9/25/2018	Rev. H	<ul style="list-style-type: none"> Updated Site Plan and Dimensions section.
06/11/2019	Rev. I	<ul style="list-style-type: none"> Added site plan for h3/h5

Shipping Specifications

Definitions

EFI peripherals are shipped in one of two packaging configurations: **crated** or **uncrated**. All peripherals are **palletized**.

- **Crated:** EFI peripherals that are shipped outside US borders are shipped in a crate to protect against damage.
- **Uncrated:** The peripheral has been removed from the shipping crate, removed from pallet, with all packaging removed.

Note: Use the uncrated dimensions to determine if the peripheral will fit through your doorway.

Table 1: Peripheral Dimensions and Weights

	Height	Width (front to back)	Length (left to right)	Weight
Crated	79.5" [2.02m]	92.0" [2.33m]	157.8" [4.01m]	6,165 lb [2,796 kg]
Uncrated	48.0" [121.9cm]	82.0" [208.3cm]	152.0 [386.1cm]	3,840 lb [1,742 kg]

**Uncrated dimensions are listed in the overview pages at the end of this document.*

1. Operational Clearances

The drawings at the end of this document show the printer and peripheral dimensions, as well as working clearances needed to accommodate printing operations.

2. Print Environment

Keep the room where the printer and peripherals are located free of dust and other particle contaminants.

Table 2: Environment Specifications

Environment	
Parameter	Value: Imp[Metric]
Ambient Room temperature	68 °F – 86 °F [20 °C – 30 °C]
Relative humidity (Non-condensing)	30-80%

Electrical Specifications

A power cable must be supplied by the customer. Size and configuration is determined by local code requirements. A licensed electrician must ensure that your printer's dedicated power source meets the specification requirements.

Table 3: Electrical Specifications

Parameter	Value
Power, Nominal	360-528 VAC @ 30A (3 Phase)
Power, Absolute Min/Max	Main Input (L1, L2, L3, PE at main disconnect switch) 360-528 VAC L-L, 208-305 VAC L-PE MAINS (L1, L2, L3, at power distribution block PDB206) 360-528 VAC L-L, 208-305 VAC L-chassis XFMR OUT (L1, L2, L3, PE at power distribution block PDB215) 180-264 VAC L-L, 104-152 VAC, L-PE
Frequency	50 or 60 Hz
Wiring	3-phase, 4 wire (3 legs + Earth Ground)
Legend: L – Line L-L – Line to Line PE – Physical Earth Important: Installers must measure the line-to-line, line-to-chassis, and line-to-ground voltages. The voltages difference must be within the above specifications.	

Compressed Air – Main Peripheral

Table 4: Compressed Air Specifications

Air	
Parameter	Value: Imp[Metric]
Main Input	70-85 psi [4.82 bar]
	>/= 0.5 SCFM [0.845 m ³]
Main Air Regulator	45 psi (+/- 5)
Fence Assy. Regulator	45 psi (+/- 5)

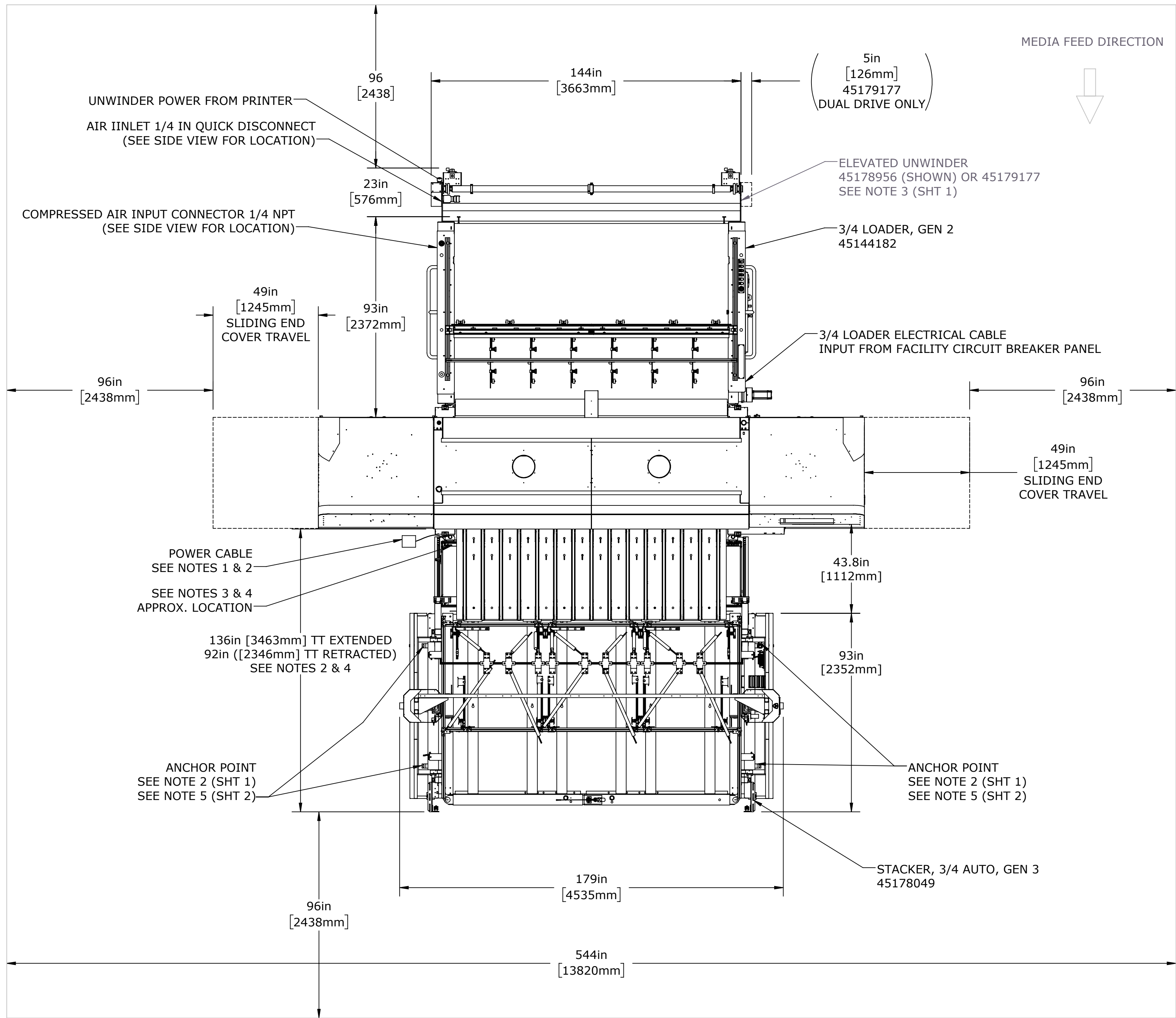
Media Specifications

Table 5: Media Specifications

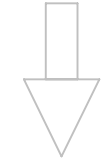
Media Specifications	
Parameter	Value: Imp[Metric]
Media Size, Min.	36 inches [91.44 cm] x 36 inches [91.44 cm]
Media Size, Max.	60 inches [152.4 cm] x 120 inches [304.8 cm]
Sheet Thickness, max	2 inches [5.08 cm]
Max. Sheet Weight	10 lbs or 6 psi, whichever is less
	4.54 kg or [0.421842 kg force], whichever is less

3. Site Plan and Dimensions

The drawings shown on the following pages of this document illustrate the peripheral dimensions in an automated printing configuration. To ensure that you have the latest version of this drawing, contact your field service engineer before site planning.

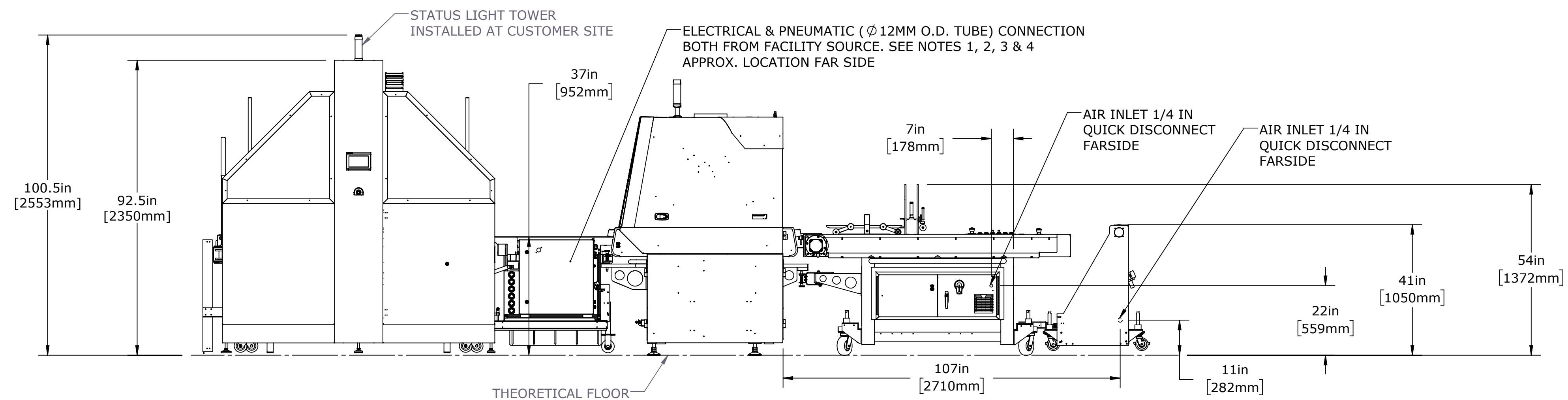
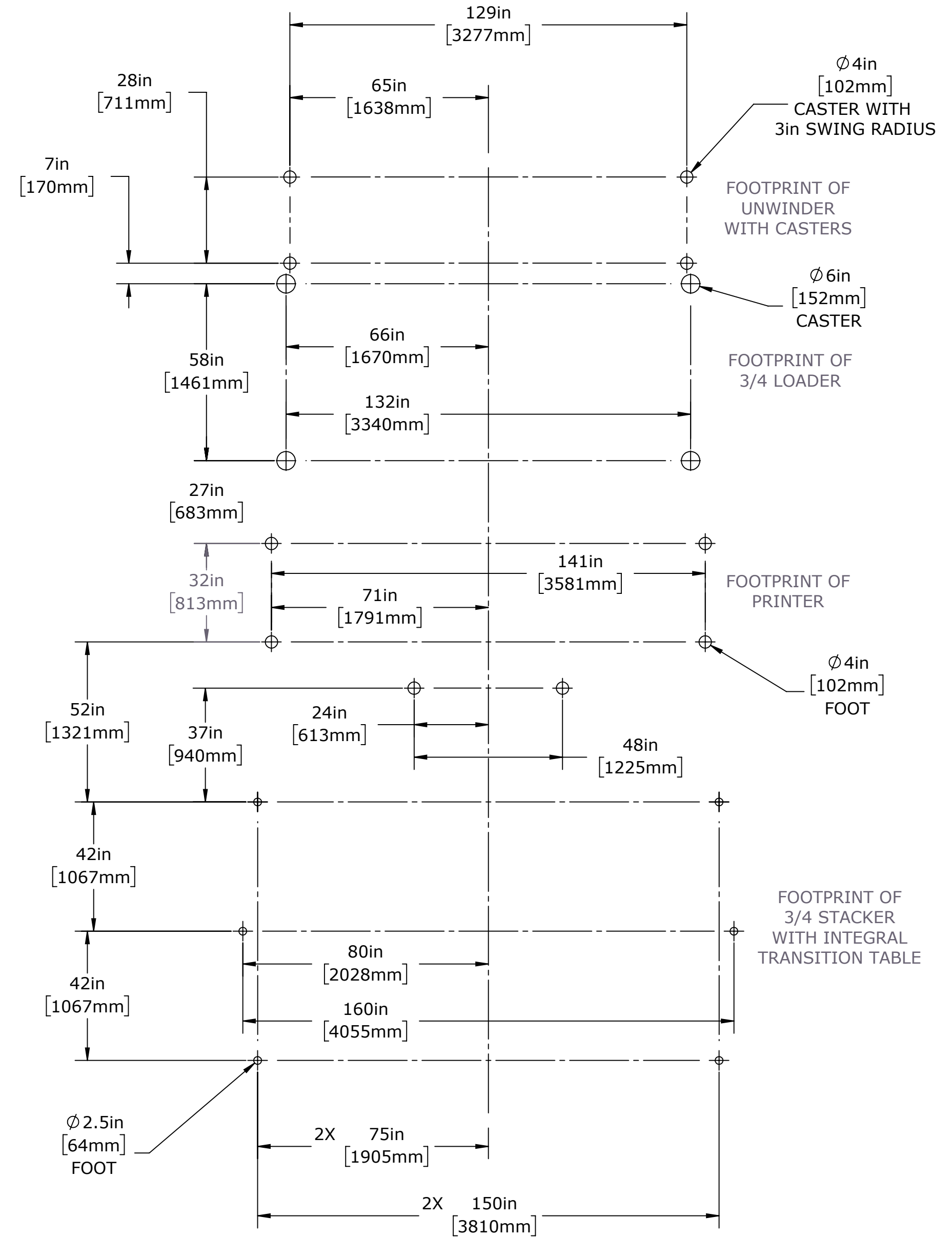


MEDIA FEED DIRECTION



RECOMMENDED PRINTER AREA

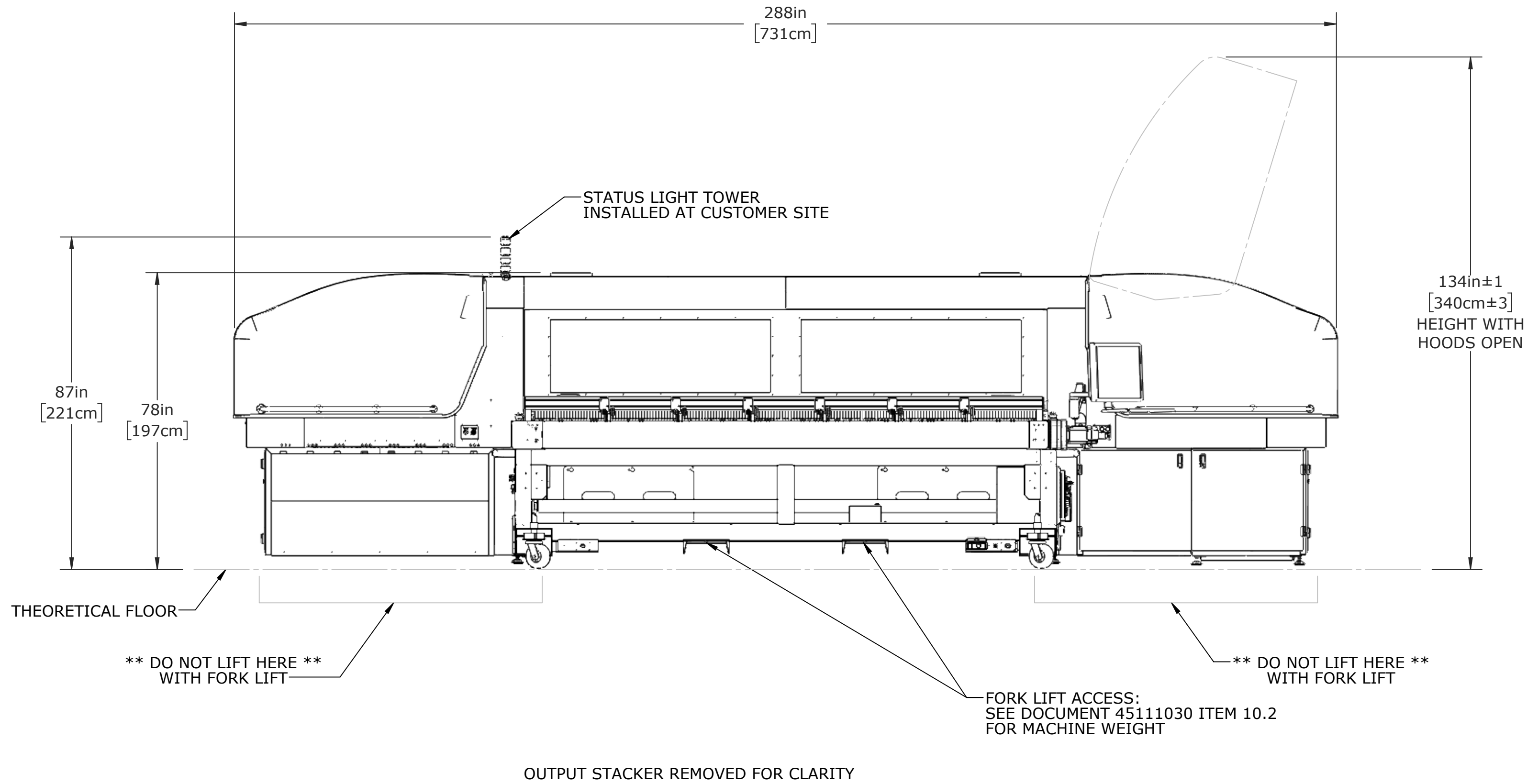
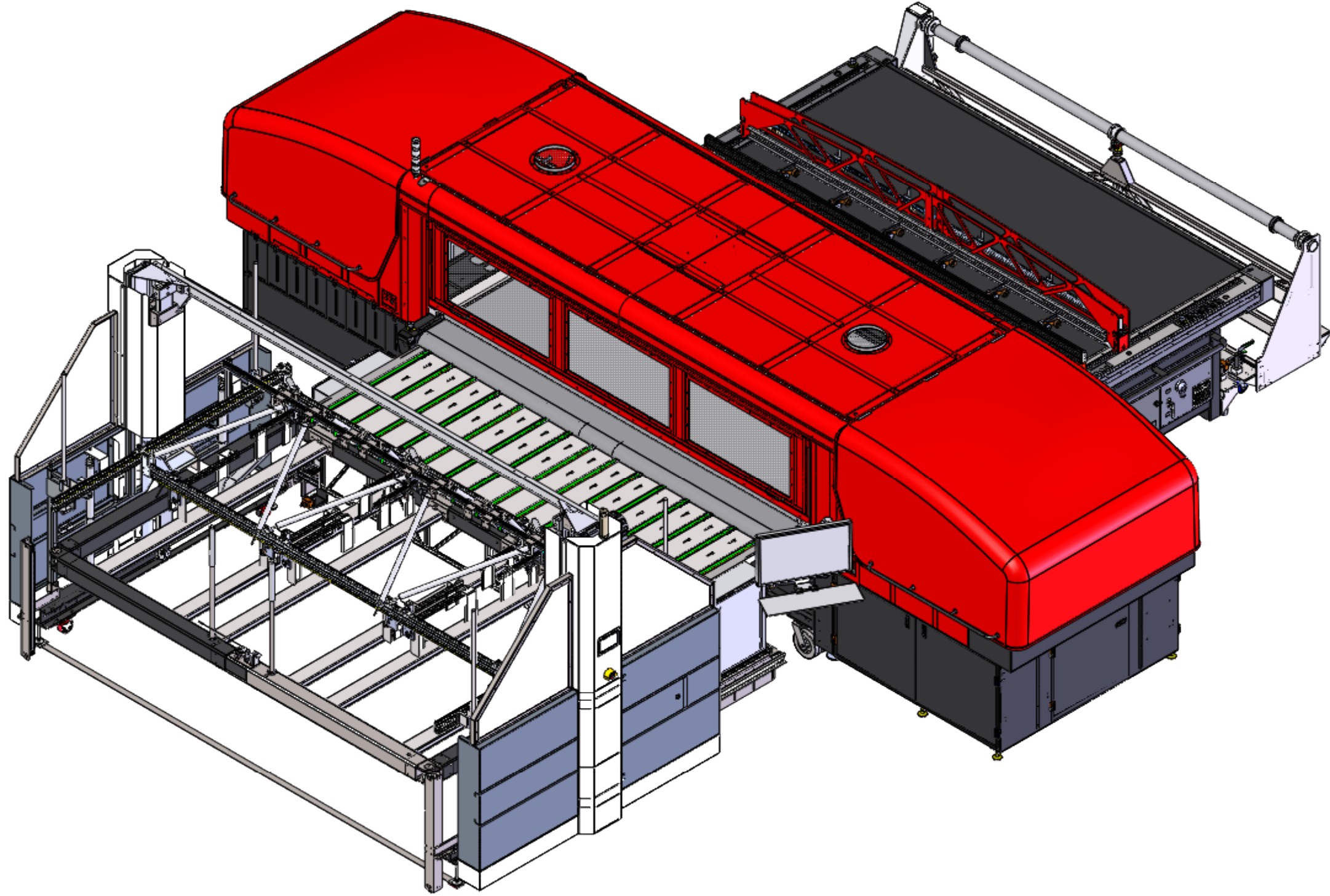
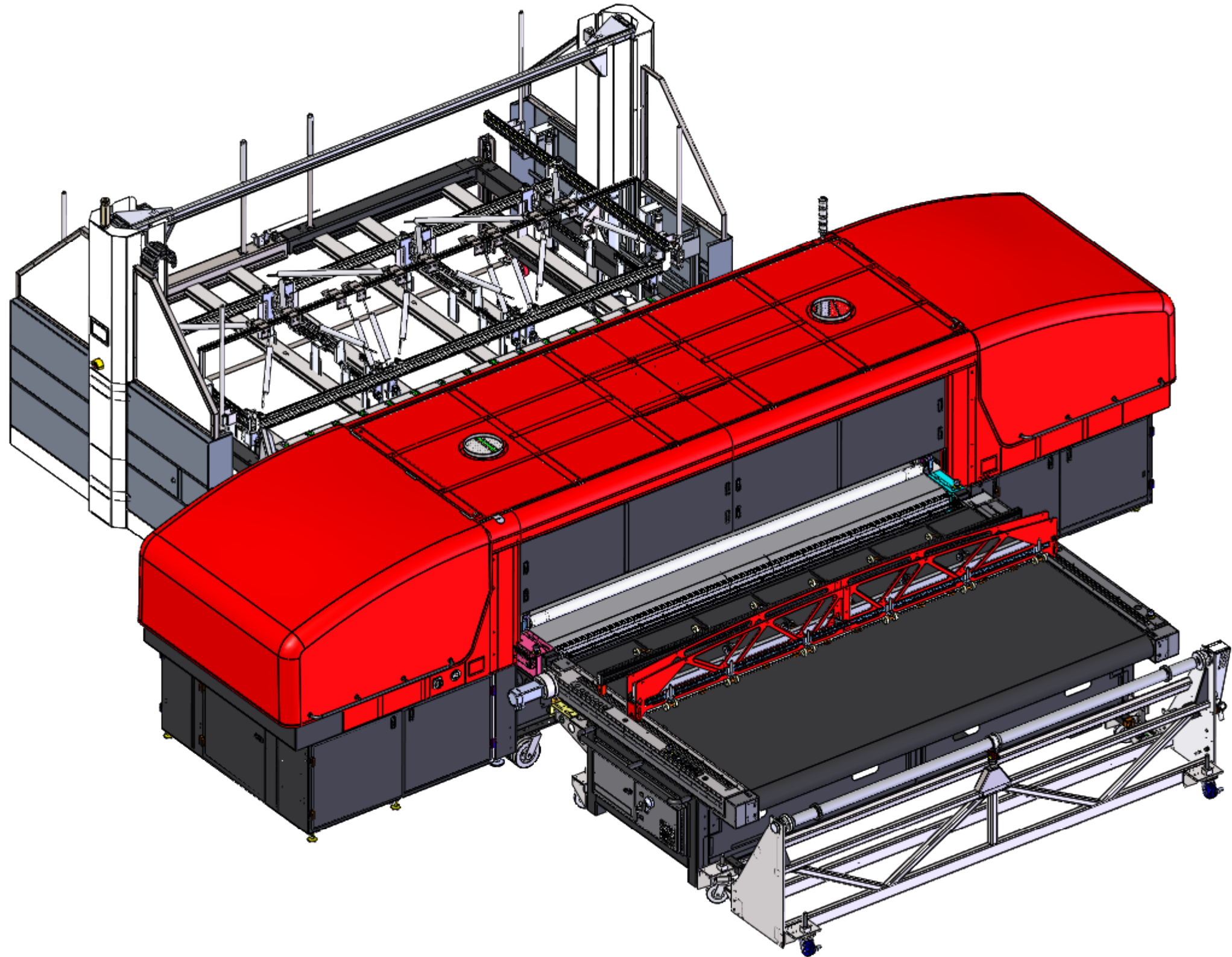
- NOTES:
1. POWER REQUIREMENTS: DEFINED IN 3/4 STACKER GEN 3 ENGINEERING SPECIFICATION 45183714.
 2. POWER FEED MUST ACCOMMODATE THE TRANSITION TABLE (TT) IN BOTH EXTENDED AND RETRACTED POSITIONS.
 3. AIR REQUIREMENTS: CLEAN DRY AIR, 80CFM @ 90PSI
 4. AIR FEED MUST ACCOMMODATE THE TRANSITION TABLE (TT) IN BOTH EXTENDED AND RETRACTED POSITIONS.
 5. MACHINE LAGGING REQUIREMENTS: M12 CONCRETE ANCHORS IN 4" THICK MINIMUM OF 4000 PSI CONCRETE. ANCHOR ENGAGEMENT 3.5" MINIMUM
 6. ESTIMATED MACHINE WEIGHT: 4500 TO 5000 LBS
- FACILITY CONNECTIONS PROVIDED:
- AIR: 12MM OD TUBE RATED FOR 200 PSI OR GREATER
 - ELECTRICAL: NEMA STYLE L16-30P TWISTLOCK RECEPTACLE, 30 AMP, 4 WIRE



PRINTER WITH OPTIONAL
ELEVATED WINDERS & 3/4 LOADER

UNLESS OTHERWISE SPECIFIED DIMENSIONS ARE IN INCHES TOLERANCES ARE: FRACTIONS DECIMALS ANGLES #1/16 .X .03 .X ±.5 XX .01 .XX ±.1 63/ XXX .005 XXX .0010	CAD GENERATED DRAWING, DO NOT MANUALLY UPDATE DO NOT SCALE DRAWING PROPRIETARY AND CONFIDENTIAL THE INFORMATION CONTAINED IN THIS DRAWING IS THE SOLE PROPERTY OF EFI, INC. ANY REPRODUCTION IN PART OR AS A WHOLE WITHOUT WRITTEN PERMISSION OF EFI, INC. IS PROHIBITED.	TITLE DOC, SITE DWG, H3_H5, 3_4 AUTO	REV 1
MATERIAL SEE AGILE	DATE 4/11/2018	SIZE DWG NO. 45182607	SCALE 1:32
COATING N/A	VERSION Dwg Ver: 10 Model Ver: 10	FILE NAME 45182607.DWG	SHEET 2 of 2

REV	DESCRIPTION	DATE	DRN BY	CHECKED
1	ECO 50358: PROTOTYPE RELEASE	7/3/2018	KDD	DBR



- NOTES:
1. DIMENSIONS ARE NOMINAL EXCEPT AS SHOWN (DUAL DIMENSIONS ARE IN CENTIMETERS)
 2. STACKER SHOWN ON SHEET 2 MUST BE ANCHORED TO THE FLOOR, AFTER FINAL POSITION IS ESTABLISHED.
 3. ELEVATED UNWINDER REQUIRES DOCKING KIT 45182839 SUPPLIED WITH WINDER. SEE 45182427 FOR WINDER INPUT REQUIREMENTS.
 4. MATE REQUIREMENTS FOR SUPPLIED COMPRESSED AIR FITTINGS

UNLESS OTHERWISE SPECIFIED DIMENSIONS ARE IN INCHES TOLERANCES ARE: FRACTIONS DECIMALS ANGLES #1/16 .X ±.03 .XX ±.5 63 .XXX ±.003 XXX ±.0010 REMOVE ALL BURS AND SHARP EDGES EXCEPT WHERE NOTED OTHERWISE	CAD GENERATED DRAWING. DO NOT MANUALLY UPDATE. DO NOT SCALE DRAWING. PROPRIETARY AND CONFIDENTIAL THE INFORMATION CONTAINED IN THIS DRAWING IS THE SOLE PROPERTY OF EFI, INC. ANY REPRODUCTION IN PART OR AS A WHOLE WITHOUT WRITTEN PERMISSION OF EFI, INC. IS PROHIBITED.	DATE 7/3/2018	SIZE DWG NO. 45182721	REV 1
MATERIAL SEE AGILE	VERSION Dwg Ver: 7 Model Ver: 4 FILENAME: 45182721.DWG SITE DWG, HS, 3, 4, AUTO	SCALE 1:30	SHEET 1 OF 3	FORM 423-11D



DOC, SITE DWG, HS, 3_4
AUTO

UNWINDER POWER FROM PRINTER
(SEE SIDE VIEW FOR LOCATION)

AIR IINLET 1/4 IN QUICK DISCONNECT
(SEE SIDE VIEW FOR LOCATION)

COMPRESSED AIR INPUT
CONNECTOR 1/4 NPT
(SEE SIDE VIEW FOR LOCATION)

COMPRESSED
AIR INPUT
1/4 NPT
(SEE NOTE 4
SHT 1)

OPTIONAL SLIDING END COVER TRAVEL
(REF. 45153216)

POWER CABLE
SEE NOTES 1 & 2

SEE NOTES 3 & 4
APPROX. LOCATION

136in [346cm] TT EXTENDED
92in ([235cm] TT RETRACTED)
SEE NOTES 2 & 4

ANCHOR POINT
SEE NOTE 2 (SHT 1)
SEE NOTE 5 (SHT 2)

5in
[13cm]
45179177
DUAL DRIVE ONLY

ELEVATED UNWINDER
45178956 (SHOWN) OR 45179177
SEE NOTE 3 (SHT 1)

3/4 LOADER, GEN 2
45144182

3/4 LOADER ELECTRICAL CABLE
INPUT FROM FACILITY
CIRCUIT BREAKER PANEL

PRINTER:
ELECTRICAL CABLE INPUT FROM
FACILITY CIRCUIT BREAKER PANEL

RJ45 ETHERNET CONNECTOR

EXHAUST COLLARS:
OUTSIDE DIAMETER 10.25" [26cm]
INSIDE DIAMETER 10" [25.4cm]

ANCHOR POINT
SEE NOTE 2 (SHT 1)
SEE NOTE 5 (SHT 2)

STACKER, 3/4 AUTO, GEN 3
45178049

MEDIA FEED DIRECTION



RECOMMENDED PRINTER AREA

3/4 STACKER GEN 3 (45178049)

NOTES:

1. POWER REQUIREMENTS: DEFINED IN 3/4 STACKER GEN 3 ENGINEERING SPECIFICATION 45183714.
2. POWER FEED MUST ACCOMODATE THE TRANSITION TABLE (TT) IN BOTH EXTENDED AND RETRACTED POSSITIONS.
3. AIR REQUIREMENTS: CLEAN DRY AIR, 80CFM @ 90PSI
4. AIR FEED MUST ACCOMODATE THE TRANSITION TABLE (TT) IN BOTH EXTENDED AND RETRACTED POSITIONS.
5. MACHINE LAGGING REQUIREMENTS: M12 CONCRETE ANCHORS IN 4" THICK MINIMUM OF 4000 PSI CONCRETE. ANCHOR ENGAGEMENT 3.5" MINIMUM
6. ESTIMATED MACHINE WEIGHT: 4500 TO 5000 LBS

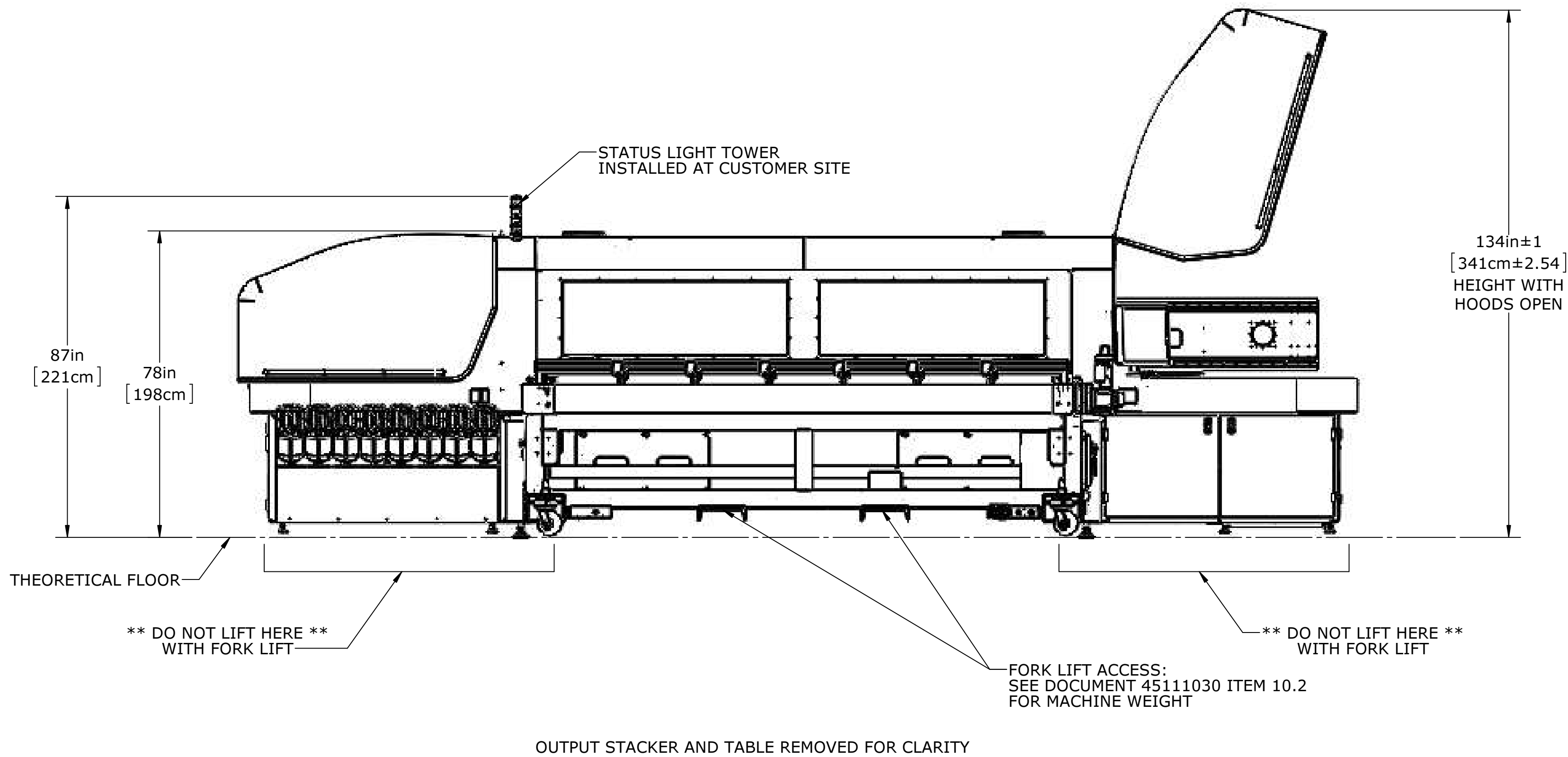
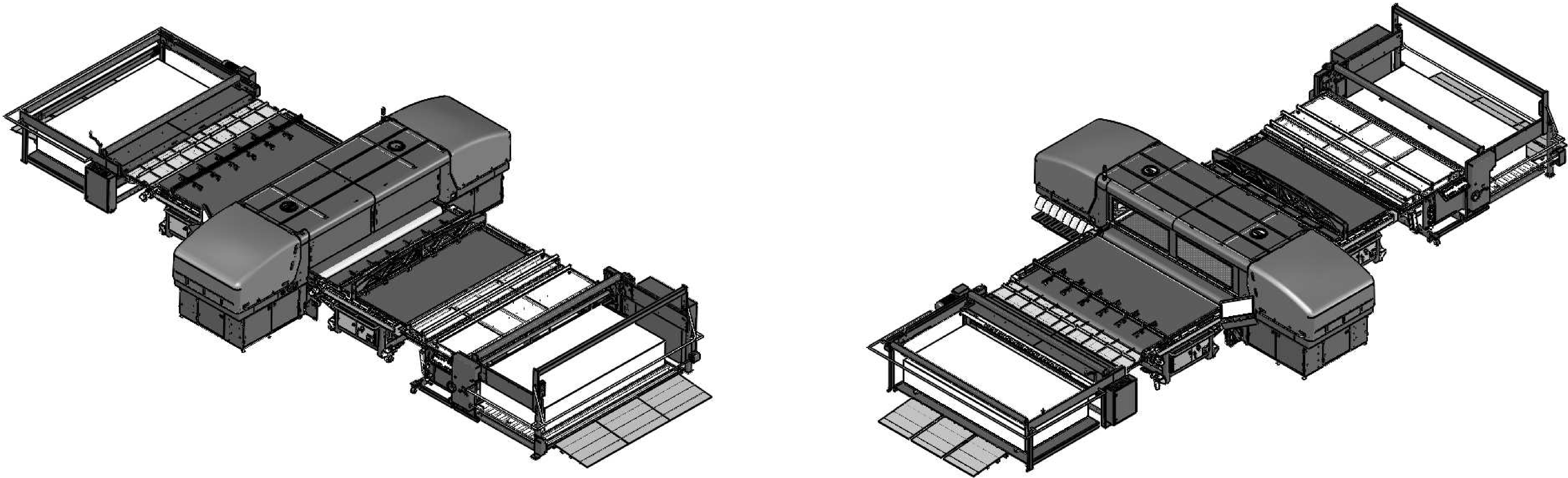
FACILITY CONNECTIONS PROVIDED:

- AIR: 12MM OD TUBE RATED FOR 200 PSI OR GREATER
- ELECTRICAL: NEMA STYLE L16-30P TWISTLOCK RECEPTACLE, 30 AMP, 4 WIRE

UNLESS OTHERWISE SPECIFIED DIMENSIONS ARE IN INCHES TOLERANCES ARE: FRACTIONS DECIMALS ANGLES #1/16 X ±.03 .XX ±.5 63 .XX ±.01 .XX ±.1 XXX ±.003 XXXX ±.0010 REMOVE ALL BURS AND SHARP EDGES EXCEPT WHERE NOTED OTHERWISE THIRD-ANGLE PROJECTION	CAD GENERATED DRAWING, DO NOT MANUALLY UPDATE DO NOT SCALE DRAWING PROPRIETARY AND CONFIDENTIAL THE INFORMATION CONTAINED IN THIS DRAWING IS THE SOLE PROPERTY OF EFI, INC.. ANY REPRODUCTION IN PART OR AS A WHOLE WITHOUT WRITTEN PERMISSION OF EFI, INC. IS PROHIBITED. DRAWN DATE KDD 7/3/2018 CHECKED DATE SECURED DATE MATERIAL SEE AGILE COATING N/A	VERSION Dwg Ver: 7 Model Ver: 4 FILENAME: 45182721.DWG SITE DWG, HS, 3, 4 AUTO
--	--	---

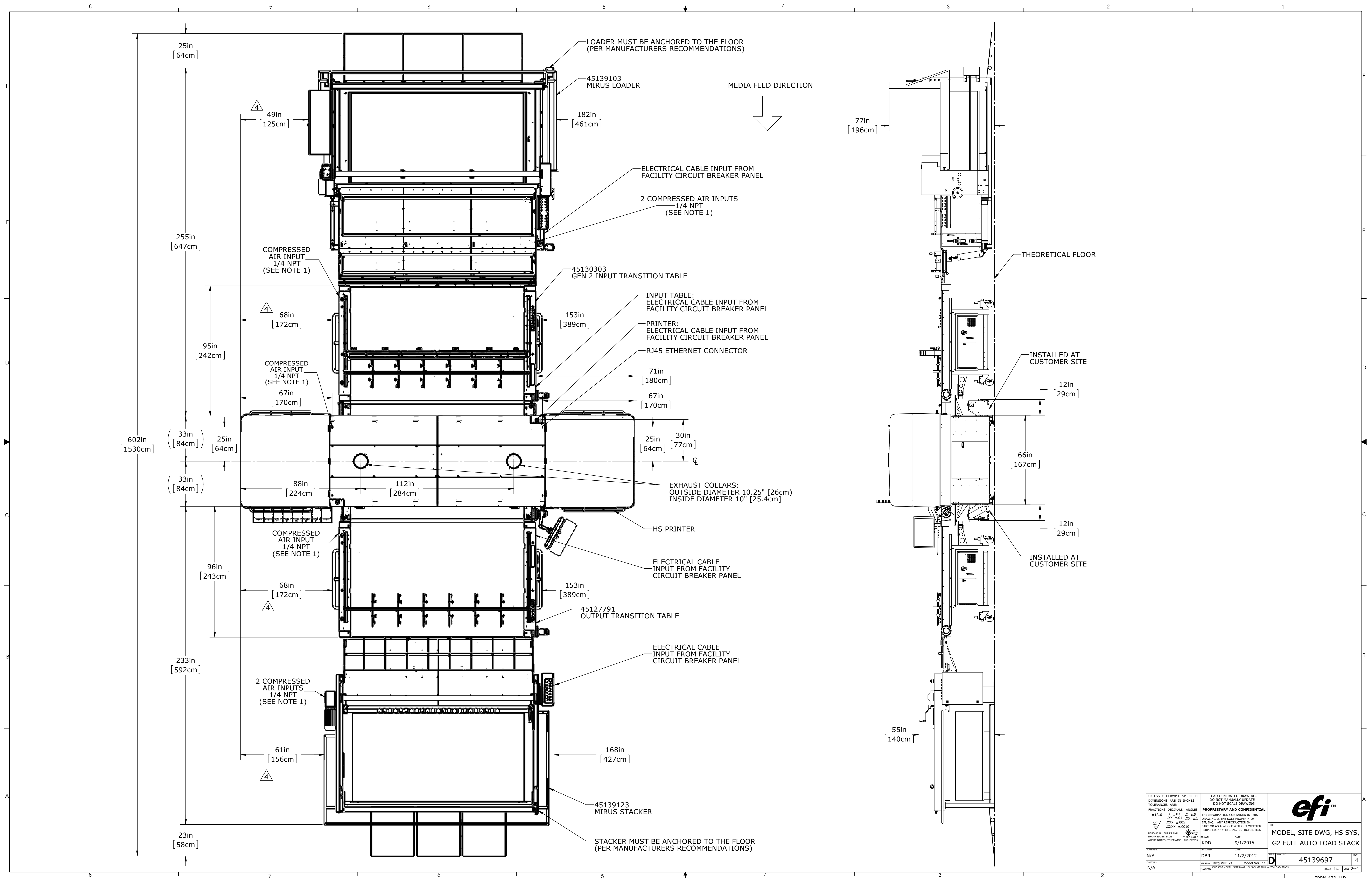
	TITLE DOC, SITE DWG, HS, 3_4 AUTO	SIZE (DWG) NO. 45182721	REV 1
FORM 423-11D		SCALE: 1:35	SHEET 2 of 3

REV	DESCRIPTION	DATE	DRN BY	CHECKED
1	ECO 38616: INITIAL RELEASE	9/24/2015	KDD	
2	ECO 41462: ADDED PRINTER FOOTPRINT VIEW (SHEET 3), ADDED HVAC NOTE	2/24/2016	CAE	SPL
3	ECO 42007: REMOVED HVAC NOTE ADDED AT REV 2	4/12/2016	CAE	SPL
4	ECO 43134: ADD SHEET 4 FOR SLIDING HOODS, ADD SOME MISSING DIMENSIONS (SHT 2)	8/3/2016	KDD	DBR

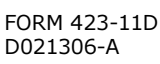


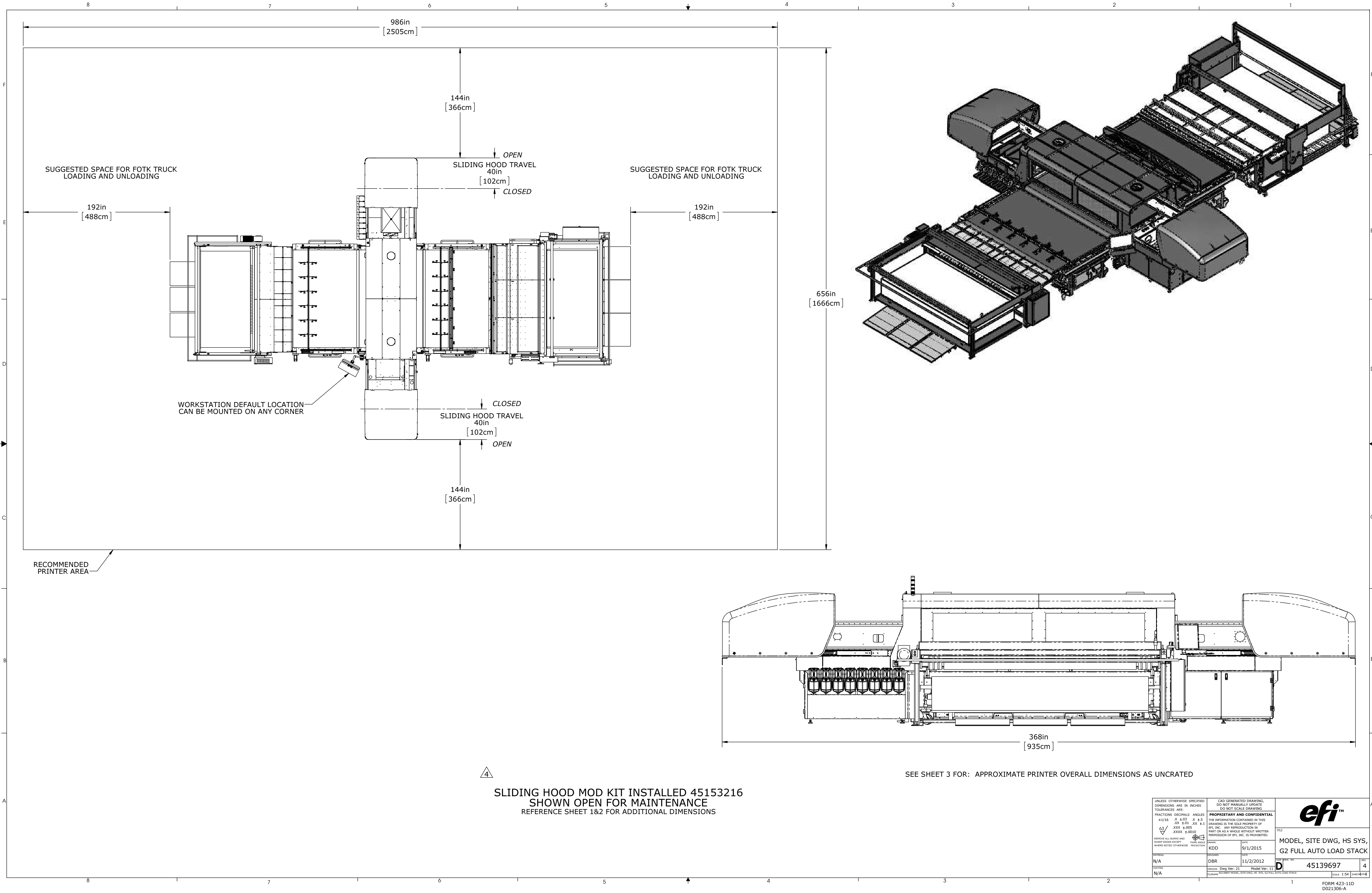
NOTES:
1. MATE REQUIREMENTS FOR SUPPLIED COMPRESSED AIR FITTINGS.

UNLESS OTHERWISE SPECIFIED DIMENSIONS ARE IN INCHES TOLERANCES ARE: FRACTIONS DECIMALS ANGLES 1/16 .03 .X ±.5 XX .01 .XX ±.1 XXX .005 .XXX ±.010 REMOVE ALL BURRS AND SHARP EDGES EXCEPT WHERE NOTED OTHERWISE		CAD GENERATED DRAWING, DO NOT MANUALLY UPDATE DO NOT SCALE DRAWING PROPRIETARY AND CONFIDENTIAL THE INFORMATION CONTAINED IN THIS DRAWING IS THE SOLE PROPERTY OF EFI, INC. ANY REPRODUCTION IN PART OR AS A WHOLE WITHOUT WRITTEN PERMISSION OF EFI, INC. IS PROHIBITED.		efi TM	
MATERIAL N/A	DESIGNED DBR	DATE 11/2/2012	REV D	MODEL, SITE DWG, HS SYS, G2 FULL AUTO LOAD STACK	REV 4
ISSUED N/A	REVISION Dwg Ver: 21 Model Ver: 11	PART NO. 45139697		SHEET 4 OF 4	



UNLESS OTHERWISE SPECIFIED DIMENSIONS ARE IN INCHES TOLERANCES ARE: FRACTIONS DECIMALS ANGLES 1/16 .03 .X 1/2 1/8 .01 .X 1/2 1/4 .005 .X 1/2 3/8 .0010 .X 1/2 1/2 .0010 .X 1/2 3/4 .0010 .X 1/2 1 .0010 .X 1/2 2 .0010 .X 1/2 3 .0010 .X 1/2 4 .0010 .X 1/2 5 .0010 .X 1/2 6 .0010 .X 1/2 7 .0010 .X 1/2 8 .0010 .X 1/2 9 .0010 .X 1/2 10 .0010 .X 1/2 11 .0010 .X 1/2 12 .0010 .X 1/2 13 .0010 .X 1/2 14 .0010 .X 1/2 15 .0010 .X 1/2 16 .0010 .X 1/2 17 .0010 .X 1/2 18 .0010 .X 1/2 19 .0010 .X 1/2 20 .0010 .X 1/2 21 .0010 .X 1/2 22 .0010 .X 1/2 23 .0010 .X 1/2 24 .0010 .X 1/2 25 .0010 .X 1/2 26 .0010 .X 1/2 27 .0010 .X 1/2 28 .0010 .X 1/2 29 .0010 .X 1/2 30 .0010 .X 1/2 31 .0010 .X 1/2 32 .0010 .X 1/2 33 .0010 .X 1/2 34 .0010 .X 1/2 35 .0010 .X 1/2 36 .0010 .X 1/2 37 .0010 .X 1/2 38 .0010 .X 1/2 39 .0010 .X 1/2 40 .0010 .X 1/2 41 .0010 .X 1/2 42 .0010 .X 1/2 43 .0010 .X 1/2 44 .0010 .X 1/2 45 .0010 .X 1/2 46 .0010 .X 1/2 47 .0010 .X 1/2 48 .0010 .X 1/2 49 .0010 .X 1/2 50 .0010 .X 1/2 51 .0010 .X 1/2 52 .0010 .X 1/2 53 .0010 .X 1/2 54 .0010 .X 1/2 55 .0010 .X 1/2 56 .0010 .X 1/2 57 .0010 .X 1/2 58 .0010 .X 1/2 59 .0010 .X 1/2 60 .0010 .X 1/2 61 .0010 .X 1/2 62 .0010 .X 1/2 63 .0010 .X 1/2 64 .0010 .X 1/2 65 .0010 .X 1/2 66 .0010 .X 1/2 67 .0010 .X 1/2 68 .0010 .X 1/2 69 .0010 .X 1/2 70 .0010 .X 1/2 71 .0010 .X 1/2 72 .0010 .X 1/2 73 .0010 .X 1/2 74 .0010 .X 1/2 75 .0010 .X 1/2 76 .0010 .X 1/2 77 .0010 .X 1/2 78 .0010 .X 1/2 79 .0010 .X 1/2 80 .0010 .X 1/2 81 .0010 .X 1/2 82 .0010 .X 1/2 83 .0010 .X 1/2 84 .0010 .X 1/2 85 .0010 .X 1/2 86 .0010 .X 1/2 87 .0010 .X 1/2 88 .0010 .X 1/2 89 .0010 .X 1/2 90 .0010 .X 1/2 91 .0010 .X 1/2 92 .0010 .X 1/2 93 .0010 .X 1/2 94 .0010 .X 1/2 95 .0010 .X 1/2 96 .0010 .X 1/2 97 .0010 .X 1/2 98 .0010 .X 1/2 99 .0010 .X 1/2 100 .0010 .X 1/2		CAD GENERATED DRAWING, DO NOT MANUALLY UPDATE DO NOT SCALE DRAWING PROPRIETARY AND CONFIDENTIAL THE INFORMATION CONTAINED IN THIS DRAWING IS THE SOLE PROPERTY OF EFI, INC. ANY REPRODUCTION IN PART OR AS A WHOLE WITHOUT WRITTEN PERMISSION OF EFI, INC. IS PROHIBITED.		TITLE MODEL, SITE DWG, HS SYS, G2 FULL AUTO LOAD STACK	
DRAWN KDD	DATE 9/1/2015	DESIGNED DBR	DATE 11/2/2012	REVISED D	45139697
MATERIAL N/A	REVISION N/A	DESCRIPTION Dwg Ver: 21	Model Ver: 11	Sheet 4	4



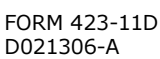


4

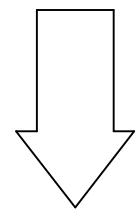
SLIDING HOOD MOD KIT INSTALLED 45153216
SHOWN OPEN FOR MAINTENANCE
REFERENCE SHEET 1&2 FOR ADDITIONAL DIMENSIONS

SEE SHEET 3 FOR: APPROXIMATE PRINTER OVERALL DIMENSIONS AS UNCRATED

UNLESS OTHERWISE SPECIFIED DIMENSIONS ARE IN INCHES TOLERANCES ARE: FRACTIONS DECIMALS ANGLES 1/16 .X .03 .X 1/2 1/8 .XX .01 .XX 1/2 1/4 .XXX .005 .XXX 1/2 1/2 .XXXX .010 .XXXX 1/2		CAD GENERATED DRAWING, DO NOT MANUALLY UPDATE DO NOT SCALE DRAWING PROPRIETARY AND CONFIDENTIAL THE INFORMATION CONTAINED IN THIS DRAWING IS THE SOLE PROPERTY OF EFI, INC. ANY REPRODUCTION IN PART OR AS A WHOLE WITHOUT WRITTEN PERMISSION OF EFI, INC. IS PROHIBITED.		TITLE MODEL, SITE DWG, HS SYS, G2 FULL AUTO LOAD STACK	
MATERIAL N/A	DATE 9/1/2015	DESIGNED KDD	DATE 11/2/2012	REVISED NO. D	REVISED NO. 4
NOTES N/A	REVISION Dwg Ver: 21	Model Ver: 11	FORM 423-11D D021306-A		



MEDIA FEED DIRECTION



192 MIN.
[488]

36in MIN.
[92cm]

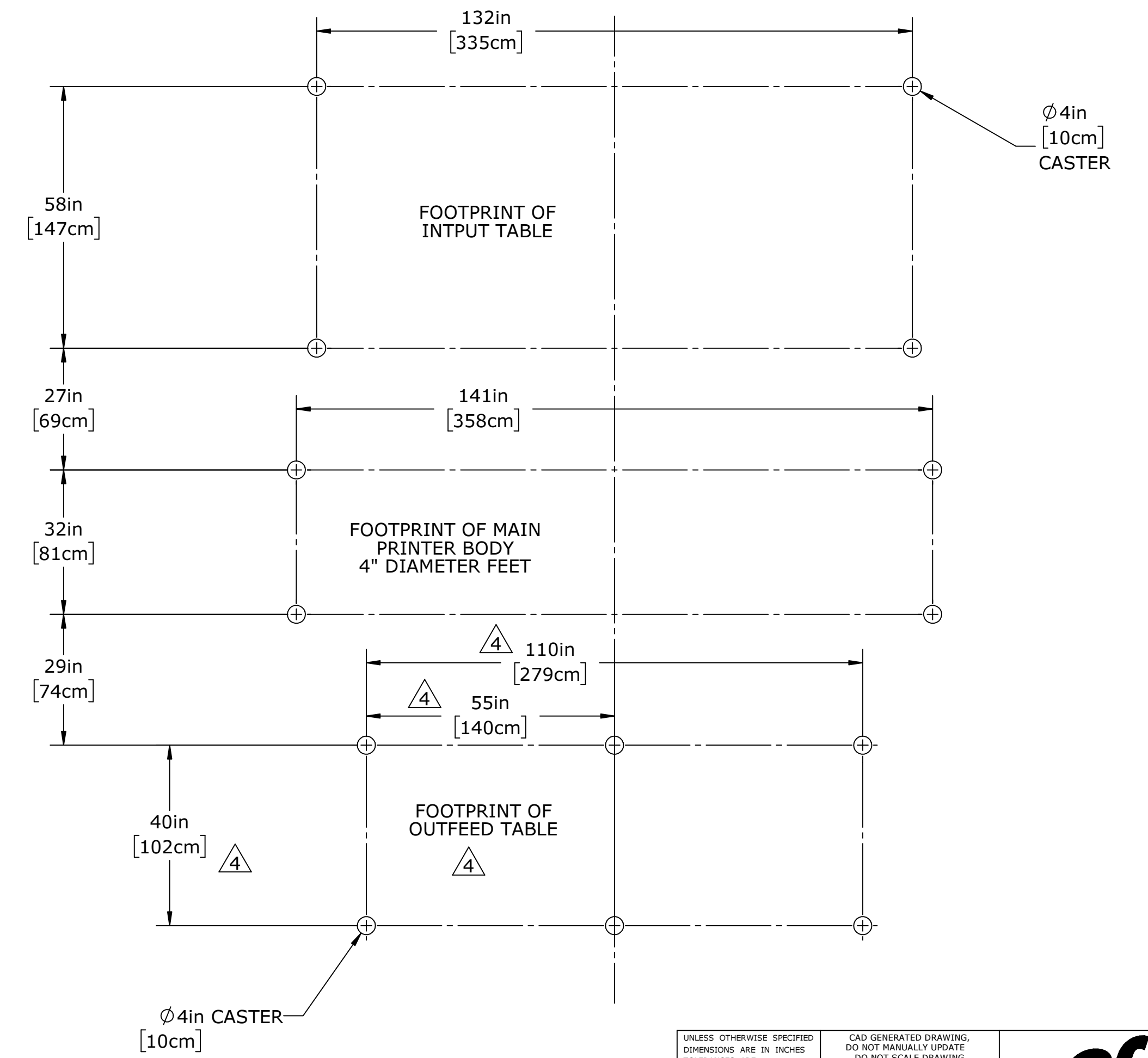
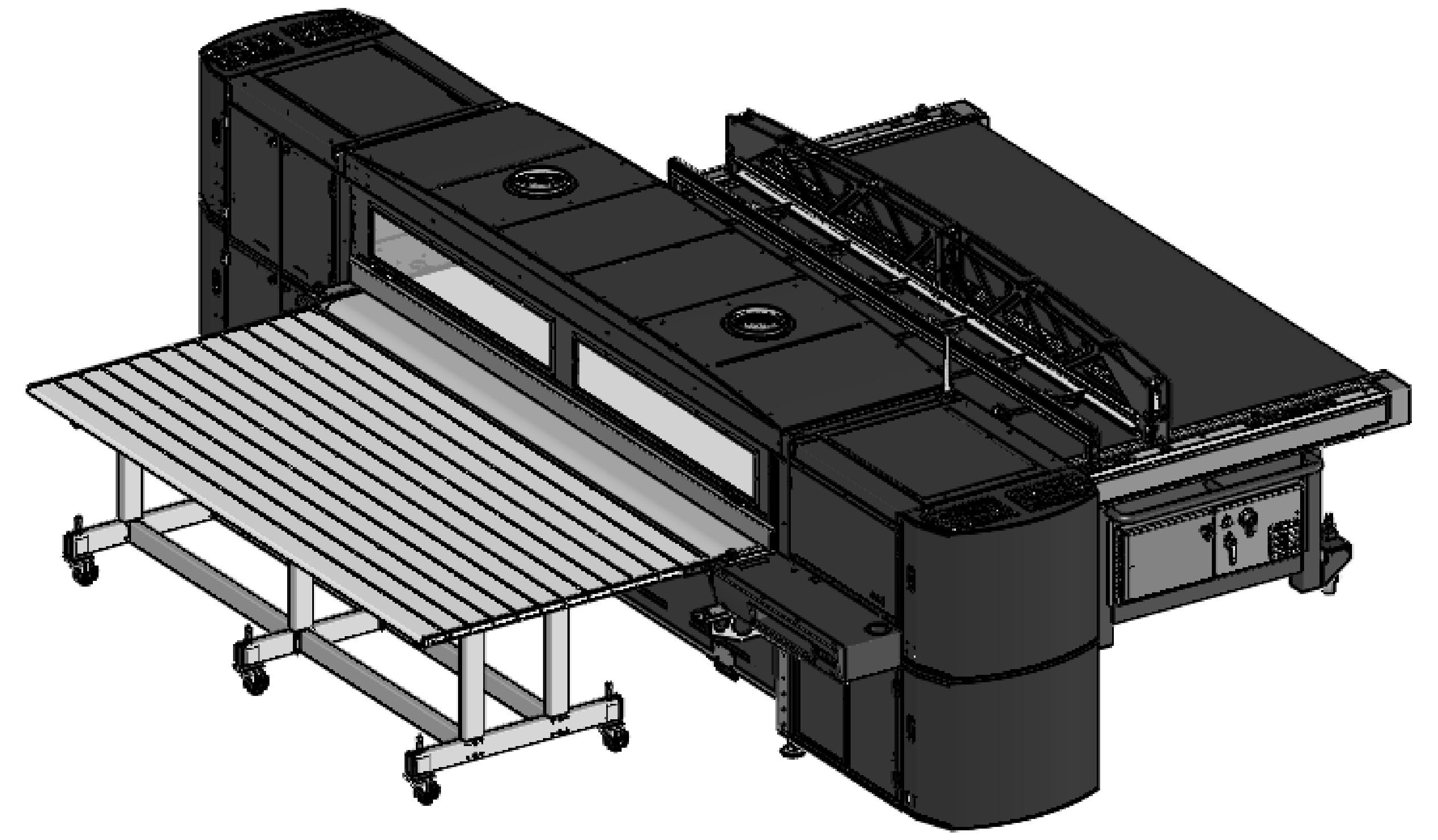
36in MIN.
[92cm]

OUTFEED TABLE

4

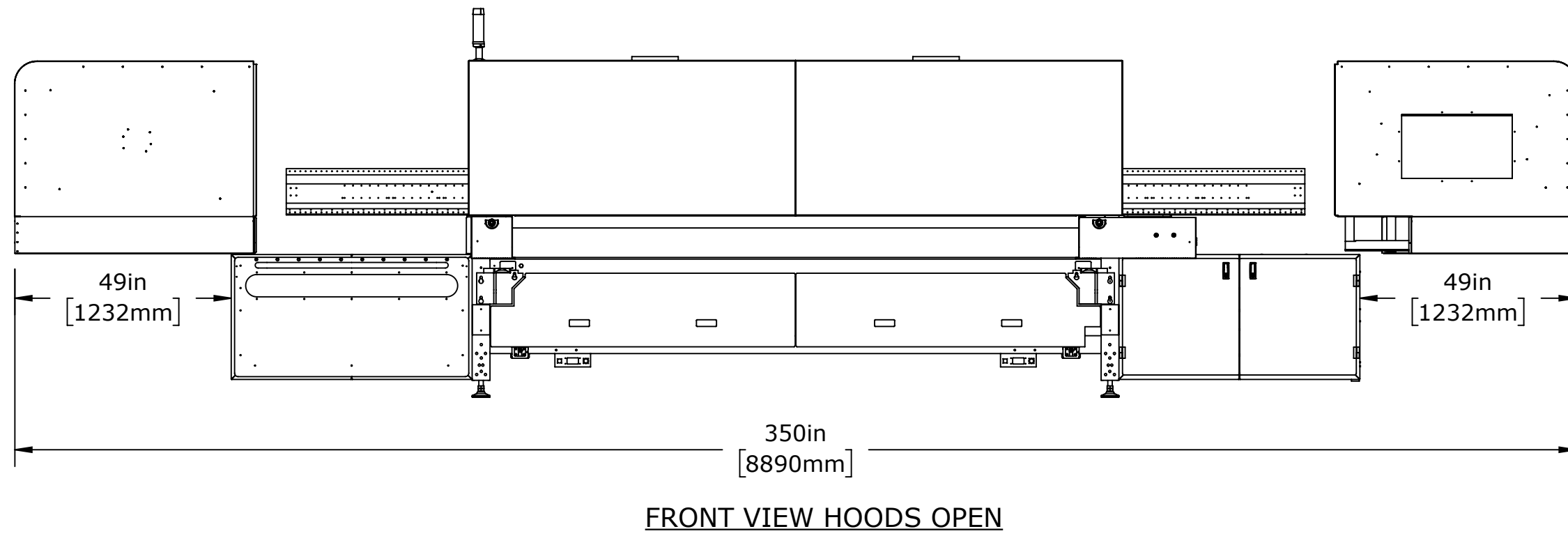
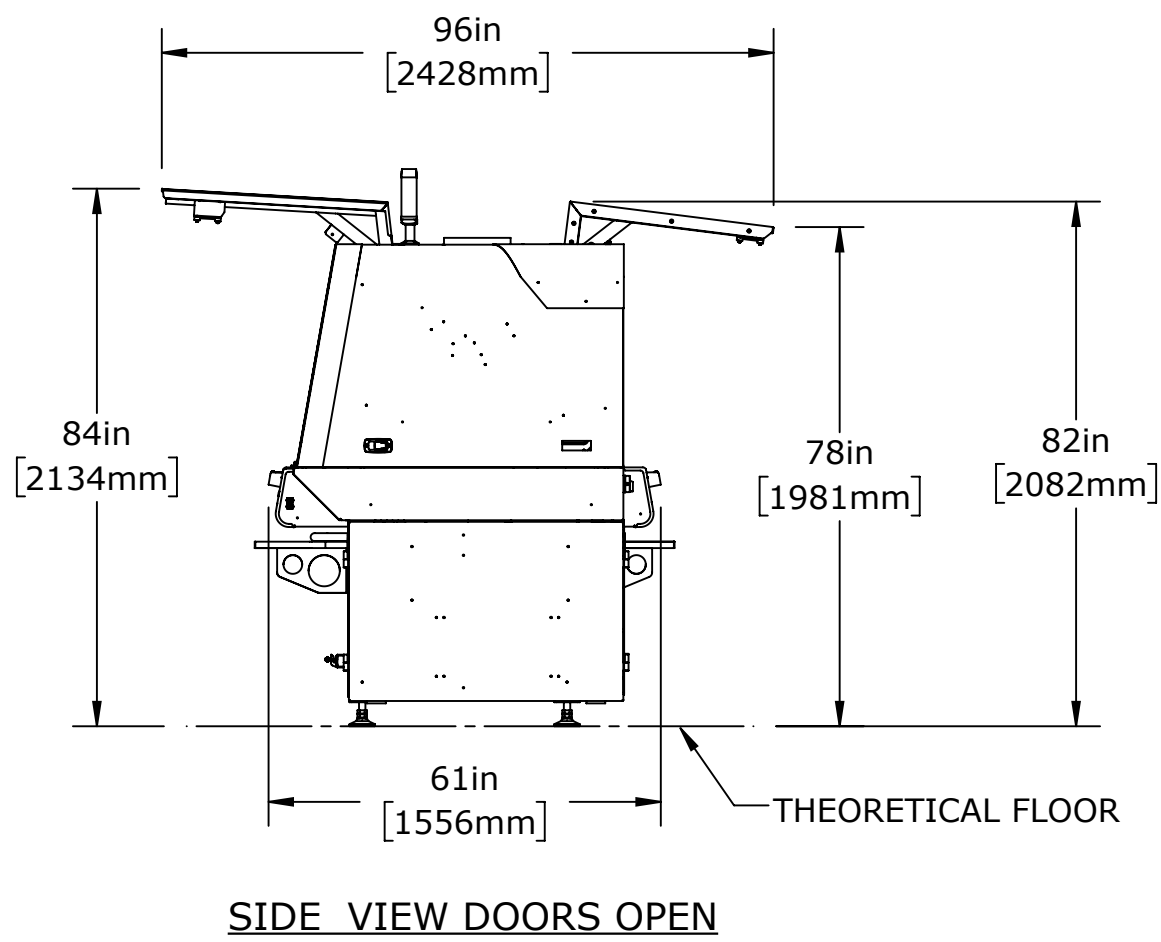
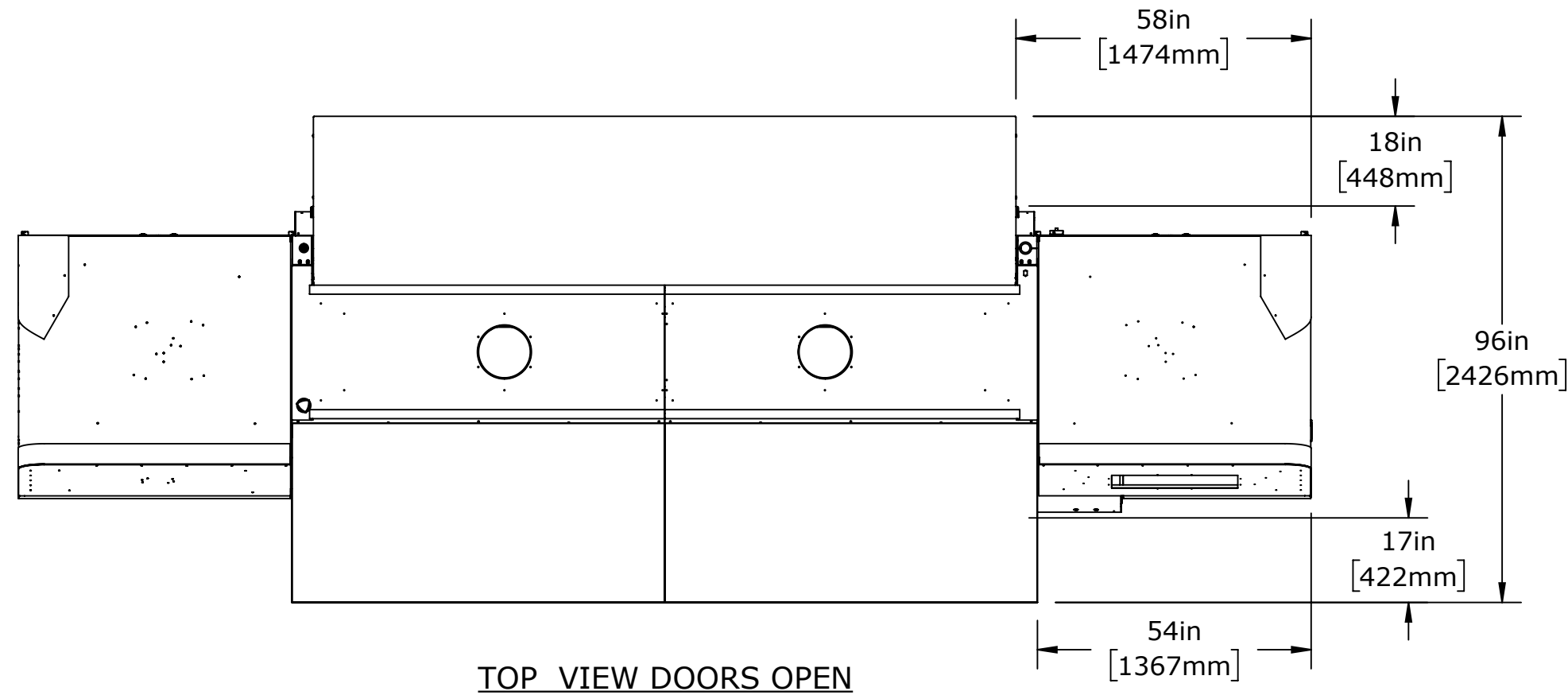
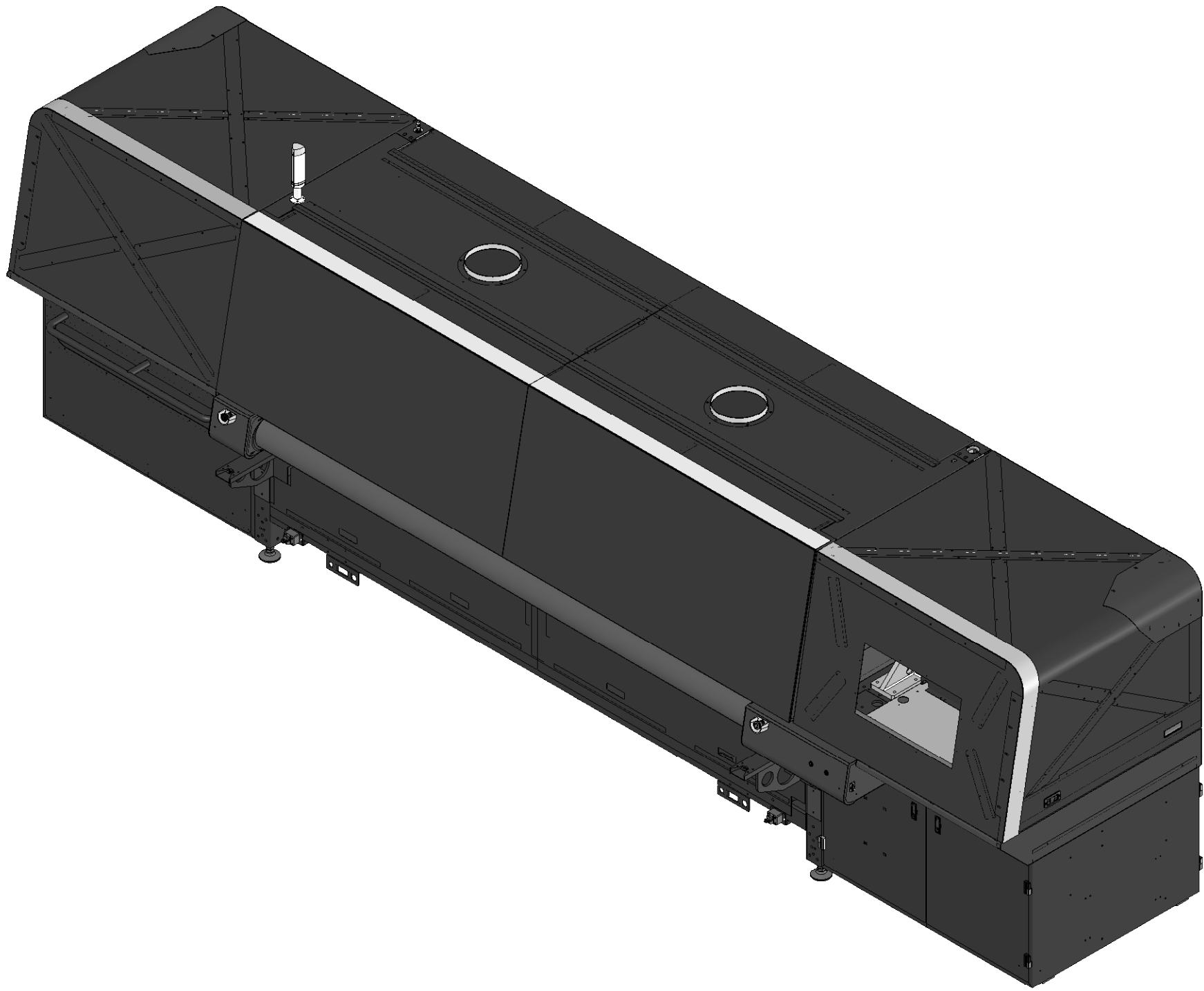
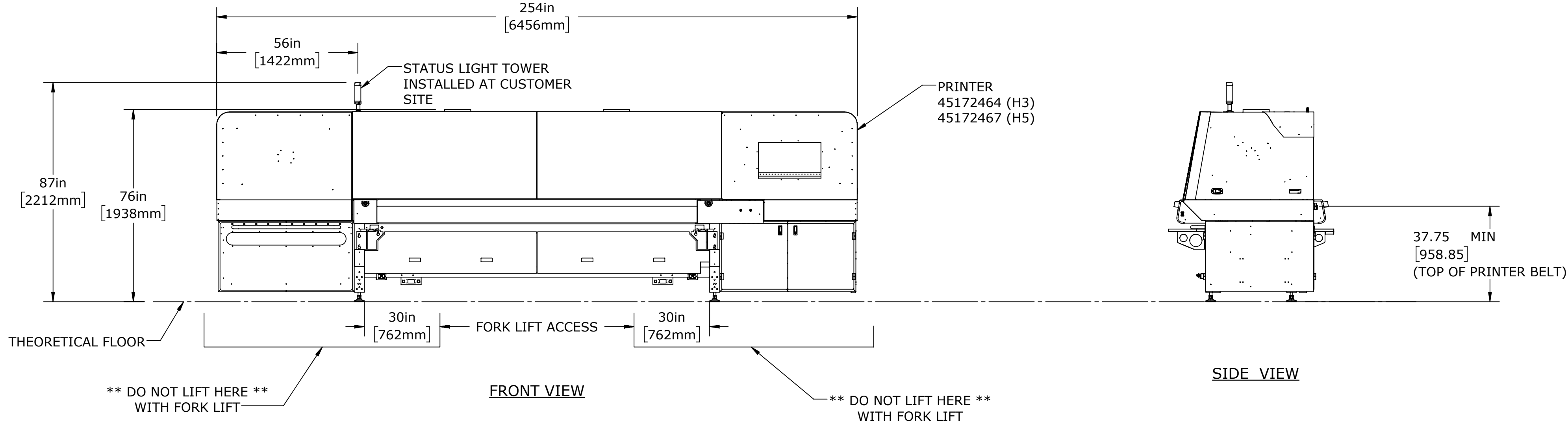
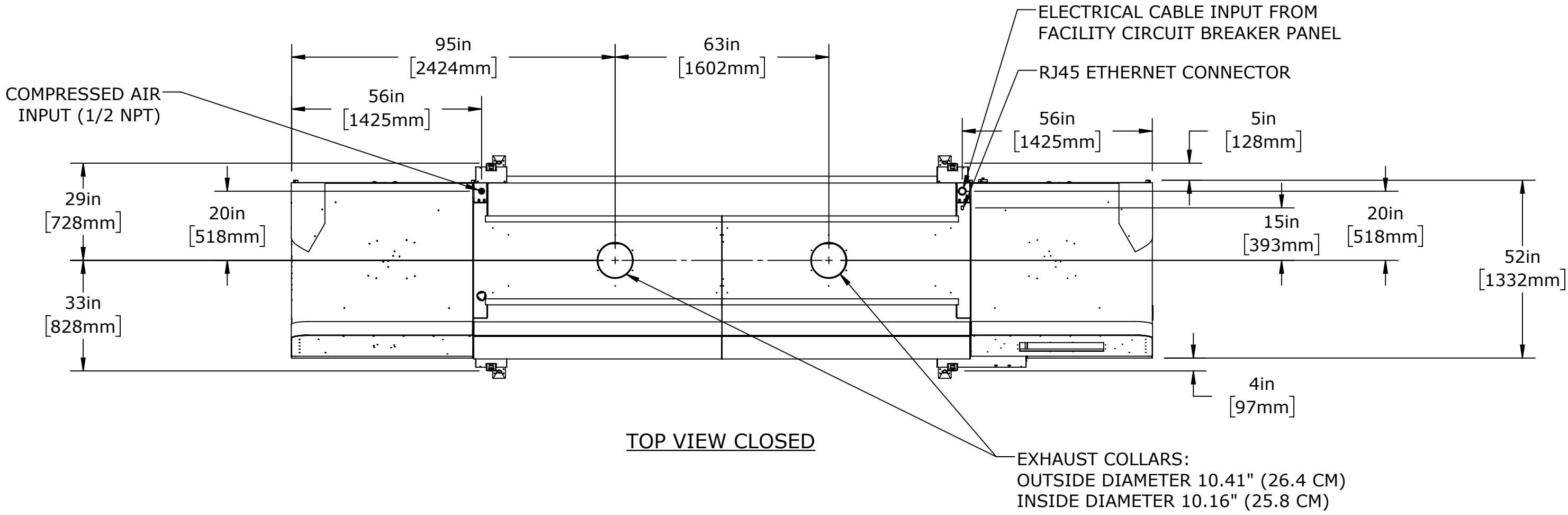
WALL 4 SIDES

192 MIN.
[488]



UNLESS OTHERWISE SPECIFIED DIMENSIONS ARE IN INCHES TOLERANCES ARE: FRACTIONS DECIMALS ANGLES 1/16 .X .03 .X ±.5 XX .01 .XX ±.1 XXX .005 .XXX ±.010 REMOVE ALL BURRS AND SHARP EDGES EXCEPT WHERE NOTED OTHERWISE		CAD GENERATED DRAWING, DO NOT MANUALLY UPDATE DO NOT SCALE DRAWING PROPRIETARY AND CONFIDENTIAL THE INFORMATION CONTAINED IN THIS DRAWING IS THE SOLE PROPERTY OF EFI, INC. ANY REPRODUCTION IN PART OR AS A WHOLE WITHOUT WRITTEN PERMISSION OF EFI, INC. IS PROHIBITED.		efi™ DOC, SITE DRAWING, LX3 PRO	
DRAWN KDD	DATE 3/19/2015	DESIGNED KDD	DATE	REV. BY: NO.	REV.
MATERIAL SEE AGILE	QUANTITY N/A	DESCRIPTION Dwg Ver: 24	Model Ver: 18	45134992	4
FORM 423-11D D021306-A		Scale: 1:24		Sheet 5 of 7	

REV	DESCRIPTION	DATE	DRN BY	CHECKED
1	ECO 49809: PROTOTYPE RELEASE	4/16/2018	CAE	DBR
2	ECO 52675: ADD DOORS IN OPEN POSITION	2/21/2019	RMN	DBR



- NOTES:
- DIMENSIONS ARE NOMINAL EXCEPT AS SHOWN (DUAL DIMENSIONS ARE IN MILLIMETERS)
 - STACKER SHOWN ON SHEET 2 MUST BE ANCHORED TO THE FLOOR, AFTER FINAL POSITION IS ESTABLISHED.
 - ELEVATED UNWINDER REQUIRES DOCKING KIT 45182839 SUPPLIED WITH WINDER. SEE 45182427 FOR WINDER INPUT REQUIREMENTS.

UNLESS OTHERWISE SPECIFIED DIMENSIONS ARE IN INCHES TOLERANCES ARE: FRACTIONS DECIMALS ANGLES +1/16 .XX .03 .XX .5 XXX .003 .XXX .0010 REMOVE ALL BURS AND SHARP EDGES EXCEPT WHERE NOTED OTHERWISE		CAD GENERATED DRAWING. DO NOT MANUALLY UPDATE DO NOT SCALE DRAWING. PROPRIETARY AND CONFIDENTIAL THE INFORMATION CONTAINED IN THIS DRAWING IS THE SOLE PROPERTY OF EFI, INC. ANY REPRODUCTION PART OR AS A WHOLE WITHOUT WRITTEN PERMISSION OF EFI, INC. IS PROHIBITED.		efi™	
REVISION		DATE		TITLE	
SEE AGILE		4/11/2018		DOC, SITE DWG, H3_H5, 3_4 AUTO	
COATING		PRODUCTION		NO. 45182607	
N/A		VERSION		REV 2	
PLANING		SCALE		SHEET 1 OF 2	

