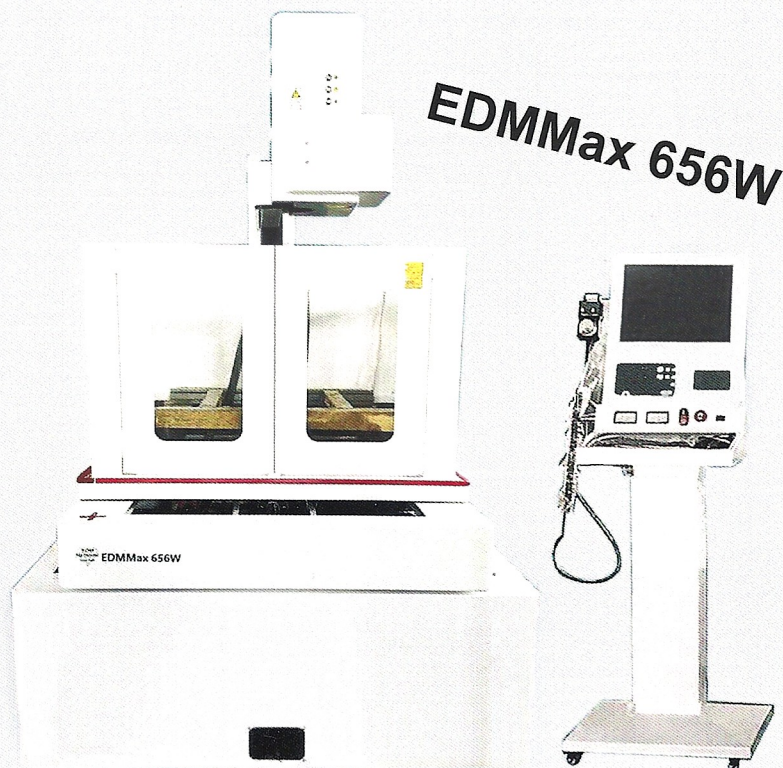
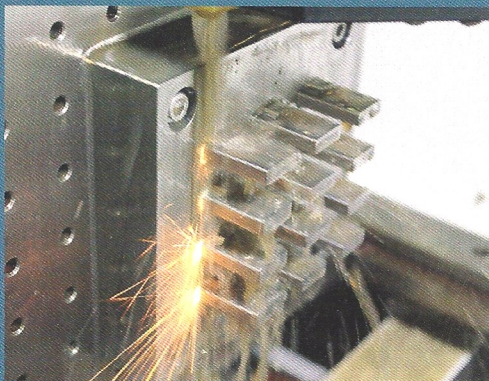
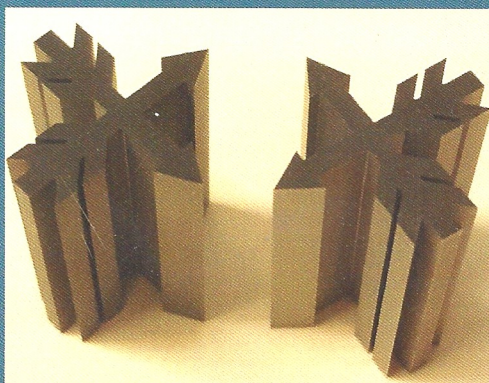
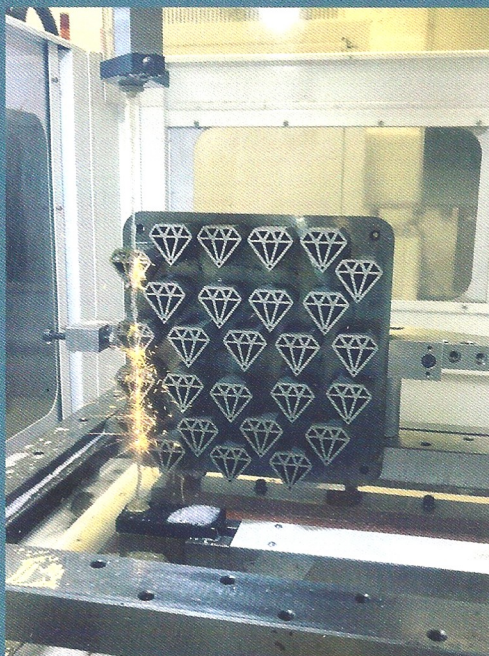


EDMMax "Fast" Wire EDMs

An affordable solution to 3-D Additive LPBF cut-off applications (and all 4-Axis Wire EDM applications).



X: 630mm (24.8")

Y: 500mm (19.7")

Z: 625mm (24.6")

Max. Workpiece Wt.: 1000kg (2200 lbs.)

Footprint: 2430 x 2400mm (96" x 95")

Fast Wire EDMs (4-axis) from EDM Network offer an affordable solution to all wire EDM applications, but especially for difficult flushing applications like interrupted cuts found in printed 3-D parts. Conventional Wire EDMs rely on high water pressure or submerging to protect the wire from overheating and breaking, the Fast Wire EDMs move the wire through the kerf at high speeds, about 5 meters per second. The fast-moving wire draws the "chips" out of the kerf to expose new material for cutting and keeping the wire cooled. Also, the high tensile strength moly wire is almost impossible to break. The 250 meters of moly (molybdenum) wire is reused as it is reciprocated continuously. It lasts from 60-80 hours depending on the thickness and material type. Average consumable cost with wire, carbides and filters is about \$1.00/hr.

In addition to low operating cost, the 4-axis models include an on-board CAD system for programming as well as USB and LAN ports to download dxf files. 3-pass Cutting Technology is included for improved accuracy and surface finishes. Tapering capability is also included to align the wire and cut limited tapers, approx. +/- 3 deg. These are full 4-axis wire EDMs, not single axis "band saws." Cut dies, molds, fixtures, as well as 3-D metal printed parts easily. On-site setup and training is included at no additional charge.



EDM Network, Inc.

1974 Bucktail Lane, Sugar Grove, IL 60554

(630)466-5588 / Fax: (630)466-5599

www.edmnetwork.com / E-mail:

sales@edmnetwork.com

www.edmnetwork.com / sales@edmnetwork.com

Over 30 years
providing
"Everything in EDM."
(630)466-5588



EDMMax 433W

X axis: 400mm 15.7"
Y axis: 320mm 12.6"
Z axis: 280mm 11.02"
Max. Workpiece Wt: 600 kg 1320 lbs.
Footprint: 2130 x 2000mm (84" x 79")



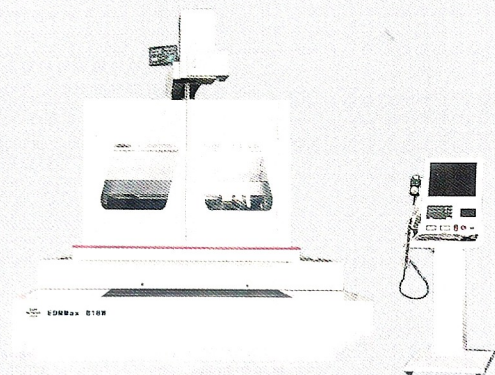
EDMMax 434WW

X axis: 400mm 15.7"
Y axis: 320mm 12.6"
Z axis: 410mm 16.14"
Max. Workpiece Wt: 600 kg 1320 lbs.
Footprint: 2130 x 2000mm (84" x 79")
Uses pure water - no additives!



EDMMax 434W

X axis: 400mm 15.7"
Y axis: 320mm 12.6"
Z axis: 410mm 16.14"
Max. Workpiece Wt: 600 kg 1320 lbs.
Footprint: 2130 x 2000mm (84" x 79")



EDMMax 818W

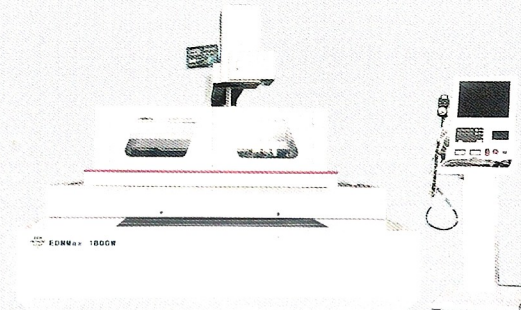
X axis: 1000mm 39.4"
Y axis: 800mm 31.5"
Z axis: 800mm 31.5"
Max. Workpiece Wt: 2000 kg 4400 lbs.
Footprint: 2650 x 2250mm (104" x 89")
Max. Workpiece Size: 31" x 31" x 70"



EDMMax 650 & 1100HW Single Axis

X axis Clearance: 650mm (25.6")
Y axis Stroke: 1000mm (39.37")
Z Clearance: 1000mm (39.37")
Max. Workpiece Wt: 1000 kg (2200 lbs.)
Footprint: 2750 x 1650mm (109" x 65")

X axis Clearance: 1100mm 43.3"
Y axis Stroke: 1400mm 55.1"
Z Clearance: 1250mm (49.2") can be increased
Max. Workpiece Wt: 3000 kg (6600 lbs.)
Footprint: 3500 x 3100mm (138" x 122")



EDMMax 1800W

X axis: 1000mm 39.4"
Y axis: 800mm 31.5"
Z axis: 1050mm 41.3"
Max. Workpiece Wt: 2000 kg 4400 lbs.
Footprint: 2650 x 2250mm (104" x 89")

All 4-Axis Models equipped with

- CNC Control	- Molybdenum Wire .007" dia.	- Touch Screen
- Tapering	- Two (2) Paper Filters	- 3.5 kVa Input 220/3/60
- 3-Pass Cutting Technology	- On-board CAD System	- No Chiller or Air Pressure Required
- AC/DC Cutting Power	- USB, LAN and MDI Inputs	- On-site Training Included



EDM Network, Inc.

1974 Bucktail Lane, Sugar Grove, IL 60554 / (630)466-5588 • Fax: (630)466-5588
www.edmnetwork.com / sales@edmnetwork.com