

REV.	DESCRIPTION	DATE
-	AS BUILT	-

PRINT TYPE	PRINT DESCRIPTION	FILENAME	SH
ELECTRICAL SCHEMATICS	0.6M SKID (INDEX)	BES0380-01	01
ELECTRICAL SCHEMATICS	0.6M SKID (PWR CKT)	BES0380-02	02
ELECTRICAL SCHEMATICS	0.6M SKID (PWR CKT)	BES0380-03	03
ELECTRICAL SCHEMATICS	0.6M SKID (MCR/DC)	BES0380-04	04
ELECTRICAL SCHEMATICS	0.6M SKID (DC IN)	BES0380-05	05
ELECTRICAL SCHEMATICS	0.6M SKID (PLC OUTPUT)	BES0380-06	06
ELECTRICAL SCHEMATICS	0.6M SKID ( DC IN / R OUT CARD)	BES0380-07	07
ELECTRICAL SCHEMATICS	0.6M SKID (ANALOG CARD)	BES0380-08	09
ELECTRICAL SCHEMATICS	0.6M SKID (FLOWMETER/POLYMER PUMP)	BES0380-09	09
ELECTRICAL SCHEMATICS	0.6M SKID (NETWORKS)	BES0380-10	10
ELECTRICAL SCHEMATICS	0.6M SKID (PRESS CBL DETAIL)	BES0380-11	11
ELECTRICAL SCHEMATICS	0.6M SKID (POLY CBL DETAIL)	BES0380-12	12
MAIN PANEL	CABINET LAYOUT	BEP0380M-01	1
MAIN PANEL	DOOR LAYOUT	BEP0380M-02	2
MAIN PANEL	BOM (0.6M SKID SYSTEM)	BEP0380M-03	3
PRESS REMOTE	CABLING DIAGRAM	BEP0380R-01	1
PRESS REMOTE	BOM	BEP0380R-02	2
PNEUMATIC SCHEMATIC	0.6M PRESS	BPS-0380-01	1
PNEUMATIC PANEL	LAYOUT	BPP-0380-01	1
PNEUMATIC PANEL	LAYOUT / BOM	BPP-0380-02	2
P AND ID	(0.6M PROCESS SCHEMATICS)	BFS-0380-01	1

## ELECTRICAL REQUIREMENTS

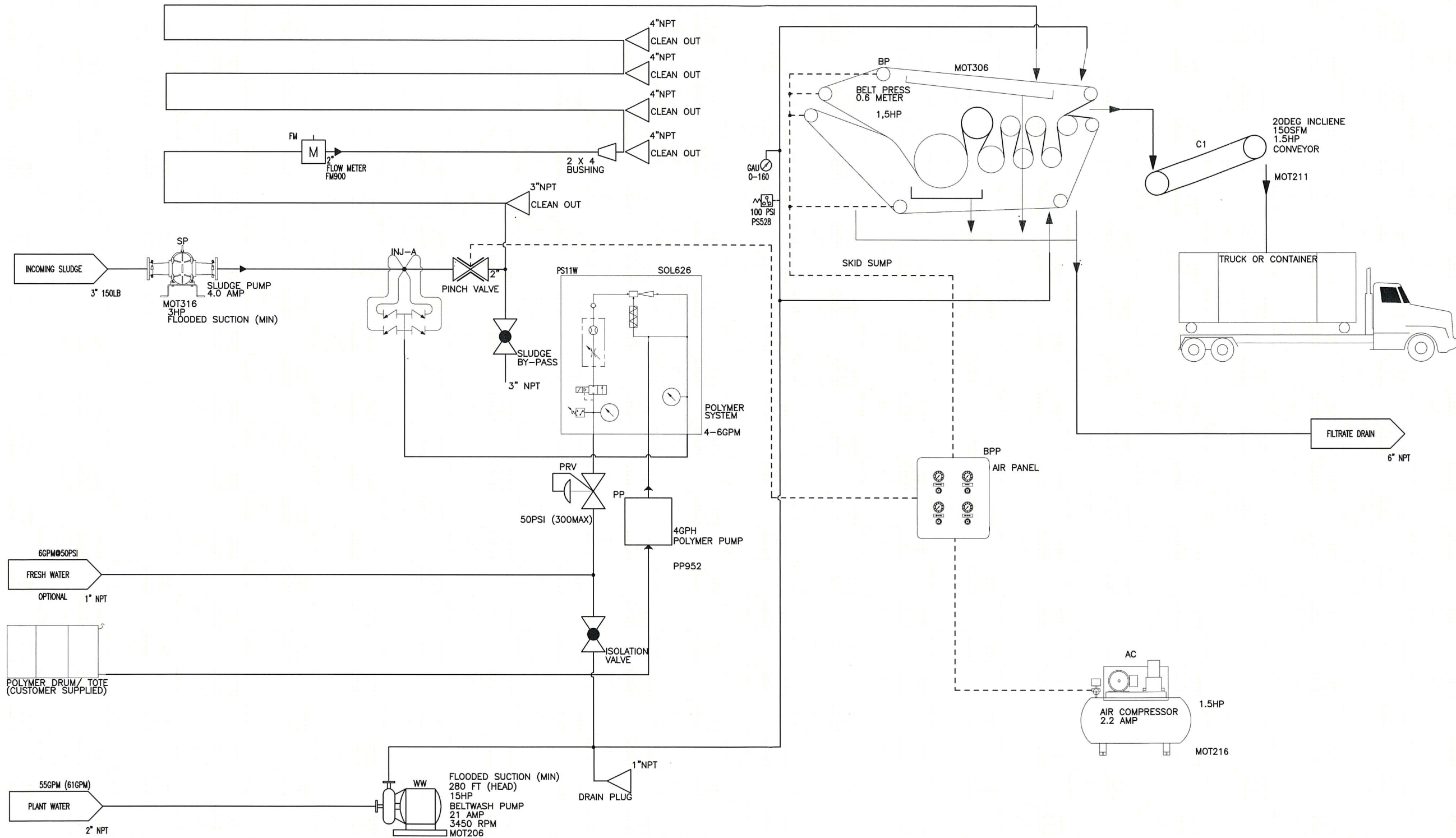
SUPPLY VOLTAGE: 277/480Y VOLTS AC, 3PHASE, 60HZ  
TOTAL HORSE POWER: 22.5  
TOTAL CONNECTED KVA: 25  
ESTIMATED FULL LOAD AMPS: 31  
LARGEST MOTOR FULL LOAD AMPS: 17.5  
SHORT CIRCUIT CURRENT RATING: 30,000 AMPERS RMS  
MAIN FUSE OR BREAKER SIZE: 40 AMPS  
RECOMMENDED PLANT FUSE OR BREAKER SIZE: 60 AMPS

DATE: 02-2017		REVISION: -	DRAWN BY: BWD	SHEET 01 OF 12	TITLE: ELECTRICAL SCHEMATICS 0.6M SKID (INDEX)	
<small>DRAWING LEGEND - CONFIDENTIAL</small> This drawing is the sole property of Sebright Technologies Inc. and embodies confidential proprietary information. All rights in this document and in the information contained herein are reserved by Sebright Technologies Inc. The document is provided for a specific purpose, and the document and the contents thereof may not be reproduced, used or disclosed to others for any other purpose without the express written consent of Sebright Technologies Inc. and the drawing must be returned to Sebright Technologies Inc. when the specific purpose is completed.					 <b>BRIGHT TECHNOLOGIES</b> A DIVISION OF SEBRIGHT PRODUCTS INC. 127 N. WATER ST. HOPKINS, MI 49328 PH 269-793-7183 / www.brightbeltpress.com	
TOLERANCE (UNLESS SPECIFIED)		WEIGHT CLASS		CUSTOMER WHO: BRIGHT TECH		
FUNCTIONS: ±1/16"	FINISH: ±0.005"	AS BUILT	SCALE: NONE	SHEET SIZE: B	PAGE #: 1	
MATERIAL: NA	SER. NO: B17-02-0380		PART NO: BES0380-01			

0380 0.6M BELT PRESS

90 FEET OF 4" SCH80 PVC SLUDGE RETENTION LINE PROVIDES 30 SECONDS OF MIXING TIME AT 100GPM  
 CALCULATION OF FLOW VELOCITY IS: "V" (ft/sec) = "Q" (ft3/sec) / "A" (ft2) OR,  
 VELOCITY OF FLOW = QUANTITY OF FLOW / CROSS SECTIONAL AREA  
 "A" OF 4" SCH80 PVC PIPE IS; A=PIE\* R squared (3.14\*1.875\*1.875=11.039 square inch \* 0.00695 = 0.077 square feet  
 "Q" IS: 100gpm \* 0.00223 = 0.223 CUBIC FEET PER SECOND  
 "V" IS: V=Q/A (0.223 ft3 / 0.077 ft2 = 3.026 ft/sec (FOOT PER SECOND) \* 30 SECONDS = 90ft

REV.	DESCRIPTION	DATE
-	AS BUILT	-



DATE: 02-2017 REVISION: - DRAWN BY: BWD SHEET 1 OF 1

**DRAWING LEGEND - CONFIDENTIAL**  
 This drawing is the sole property of Sebright Products Inc. and embodies confidential proprietary information. All rights in this document and in the information contained herein are reserved by Sebright Products Inc. The document is provided for a specific purpose, and the document and the contents thereof may not be reproduced, used or disclosed to others for any other purpose without the express written consent of Sebright Products Inc. and the drawing must be returned to Sebright Products Inc. when the specific purpose is completed.

**BRIGHT TECHNOLOGIES**  
 A DIVISION OF SEBRIGHT PRODUCTS INC.  
 127 N. WATER ST. HOPKINS, MI 49328  
 PH 269-793-7183 / www.brightbeltpress.com

TITLE: P AND ID (0.6M PROCESS SCHEMATICS)  
 CUSTOMER NAME: BRIGHT TECH  
 WEIGHT CLASS: NONE SCALE: NONE SHEET SIZE: B DWG #: B17-02-0380  
 MATERIAL: B17-02-0380 BFS-0380-01

0380\_0\_6M BELT PRESS