

PULPING UNIT				TANK				GEAR REDUCER				PURCHASED AUXILIARIES							
L/A 54-LA0015 -G1				54-LA0015 -TK				54-LA -GR				54-LA0015 -PA							
ITEM	PART NO.	MATERIAL	DESCRIPTION	QTY	ITEM	PART NO.	MATERIAL	DESCRIPTION	QTY	ITEM	PART NO.	MATERIAL	DESCRIPTION	QTY	ITEM	PART NO.	MATERIAL	DESCRIPTION	QTY
1			CUSTOMER ASS'Y.	0	46	54-105443-61M	S/S316L	TANK ASS'Y. (2-SECTION)	1	91			GEAR REDUCER ASSY PARTS		111	C97-876020-53	STL.	SHEAVE 53" O.D. TYPE C3	1
2	D54-121101-62	CRE	PULPING UNIT "EXISTING"	1	47	54-100		CUSTOMER ASS'Y.	0	-			REFERENCE DATA NO.	-	-			6-8V GROOVES (DRIVEN SHEAVE)	
3	D54-307048-3	5/174P	IMPELLER 35" RH.	1	48	54-105 -K1		TANK HARDWARE KIT		-			POSITIONAL ARRGMT (POSITION NO)		112	C97-877032-4187	STL.	BUSHING S.G. TYPE N	1
4			IMPELLER LH.		49	B54-821004-62	5/8 304	NAMEPLATE	1	92			GEAR SET		-			4.187" BORE 1"x.5" K.W. (DRIVEN)	
5			BULKHEAD MODIFICATION		50	D54-107097-61M	S/S316L	COVER ASS'Y	1	93			MAIN SHAFT		113	C97-876020-132	STL.	SHEAVE 13.2" O.D. TYPE A2	1
6			BLIND FLANGE BATCH KIT		51	483417	5/8 316L	4" DILUTION OR RECIRC. CONN.	2	94			ADAPTER RING		-			6-8V GROOVES (DRIVE SHEAVE)	
7			SLEEVE (ROTOR)		53	676168	5/8 316	ANGLE FACE RING 4" NOM.	2	95			NAMEPLATE MOUNTING		-			3.375" BORE .875"x.187" K.W.	
8	D54-606023-2	5/8 304	OUTLET 12" "EXISTING"	1	54	C97-854002B42A	HRS	BACK-UP FLANGE 4" NOM.	2	96			LUBE SYSTEM		114	C97-877029-3375	STL.	BUSHING S.G. TYPE F	1
9					55	483487	5/8 316L	8" DRAIN CONN. 8" SCH. 40 PIPE x 41" LG.	1	97			COUPLING -		-			BELTS 8V2120 50" L. TO L.	0
10			DEFLAKING DISK SEGMENT		56	676190	5/8 316	ANGLE FACE RING 8" NOM.	1	98	54-LA	CO	COUPLING -		-				
11	D54-759047-2	5/8 410	DEFLAKING EXTRACTOR "EXIST."	1	57	C97-854002B45A	HRS	BACK-UP FLANGE 8" NOM.	1	-			MTR. HALF BORE KW		116	D97-824150-54	STL.	GUARD	1
12			STRAINER GRATE		58	483499	5/8 316L	10" OVERFLOW CONN. 10" SCH. 40 PIPE x 7.5" LG.	1	-			RED. HALF BORE KW		-				
13			EXTRACTOR GRATE		59	676184	5/8 316	ANGLE FACE RING 10" NOM.	1	100			GEAR REDUCER ARRGMT (B.F)		-				
14			CLAMP RING		60	C97-854003B22A	HRS	BACK-UP FLANGE 10" NOM.	1	101			LUBE SYSTEM (B.P)		-				
15					61	483534	5/8 316L	16" INLET CONN. 10" SCH. 40 PIPE x 2" LG.	1	102					-				
16	54-LA -BU		BEARING UNIT L/A		62	676004	5/8 316	ANGLE FACE RING 16" NOM.	1	103					-				
17					63	C97-854003B25A	HRS	BACK-UP FLANGE 16" NOM.	1	104					-				
18					64	C97-010040-i	5/8 316L	3" L.L. CONN.	1	105					-				
19					65	C97-870060-16M	5/8 316L	TRUNCATED TRIM 16" E 5"x11.5"x11.5"	1	106					-				
20					66					107					-				
21					67					108					-				
22					68					109					-				
23					69					110					-				
24					70										-				
25					71										-				
26					72										-				
27	D54-100747-PI		PARTS KIT		73										-				
28	D54-101007-1	STL.	SOLE PLATE (BRG. UNIT) "EXIST"	1	74										-				
			REVISION LEV-3 (DATED 1-4-67)	1	75										-				
30					76										-				
31			COMMON MOTOR BASE		77										-				
32			TANK LEG		78										-				
33			TANK LEG		79										-				
34			TANK LEG		80										-				
35			TANK LEG		81										-				
36			TANK LEG		82										-				
37					83										-				
38	54-LA -NP		MACH N/P STAMP CUST DATA		84	BY CUST.	STL.	ANCHOR BOLTS 1.25" DIA. W/ NUTS, WASHERS & PIPE SLEEVES	13	140					-				
39					86					141					-				
40					87					142					-				
41	54-LA0015 -TK		TANK L/A		88					143					-				
42	54-LA -GR		GEAR REDUCER L/A		89					144					-				
43	54-LA0015 -PA		PURCHASED AUXILIARIES L/A		90					145					-				
44										146					-				
45										147					-				
										148					-				
										149					-				
										150					-				

PARTS KIT D54-100747 -PI

ITEM	PART NO.	MATERIAL	DESCRIPTION	QTY
131	105552	STL.	SCR.-HEX. HD. CAP 1" Ø x 2" LG.	9
132	100219	STL.	SCR.-SOB. HD. CAP .75" Ø x 2" LG.	8
133	897-804035-61	STL.	PIN, THD'D TAPER #8	2
134	105560	STL.	SCR.-HEX. HD. CAP 1" Ø x 2.5" LG.	4
135	107175	5/8 316	SCR.-HEX. HD. CAP .5" Ø x 2" LG.	16
136	272065	5/8 316	WASHER-FLAT .5" DIA.	16
137	228040	5/8 316	NUT-HEX .5" Ø	16
138				
139				
140				
141				
142				
143				
144				
145				
146				
147				
148				
149				
150				

NOTES - (CONTIN.)
 19. THE PULPING UNIT & BRG UNIT ASSY (SER. NO BC-363) WAS REMOVED FROM A TILE TANK (SEE DWG D54-100242) AND INSTALLED WITH A 5/8 TANK AS SHOWN ON THIS INSTALLATION DWG D54-100747. THE IMPELLER SIZE & DRIVE WAS CHANGED FOR 200 HP @ 440 R.P.M. OUTPUT

NOTE - 13 - PAINT PER BP-54
 NOTE - 12 - CORROSION RESISTANT MATERIAL DESIGNATIONS REFER ONLY TO SURFACES IN CONTACT WITH STOCK.
 NOTE - 11 - DO NOT USE OPERATING LEVEL TO CALCULATE AVAILABLE PUMP SUCTION HEAD. THE AVAILABLE HEAD MUST BE TAKEN FROM 6" OUTLET CONN FLANGE TO 6" PUMP SUCTION.
 NOTE - 10 - ITEMS 2, 8, 11, 84, 121, 102, 28 - NOT FURN. BY JONES
 NOTE - 9 - FOR MILL DWGS. SEE -
 NOTE - 8 - FURNISH-- 40% KRAFT, 60% GND GRADES--
 NOTE - 7 - OPER. CONDITIONS - TEMP. 175 TPD @ 4% SUG. OPER. CONS. pH
 NOTE - 6 - TANK CAP. -- 538 CU. FT. AT OPER. LEVEL
 " " -- 670 CU. FT. AT TOP
 NOTE - 5 - FOR TAGGING INFO. SEE ZONE
 NOTE - 4 - MILL AIR PRESSURE --
 NOTE - 3 - EST. WEIGHTS - PULP UNIT - 1800#
 BRG. UNIT - 1300#
 GEAR RED. - TANK W/O FND - 7,258#
 COVER - 800#
 TANK CONTENTS - 41,800#
 FILLED TO TOP
 NOTE - 2 - THIS LEVEL RECOMMENDED FOR STARTUP ONLY & MAY REQUIRE ADJUSTMENT FOR OPTIMUM PERFORMANCE
 NOTE - 1 - TANK & FOUNDATIONS - STRUCTURAL DESIGN & MATL. SPECIFICATIONS BY CUST
 CUST. -- MADISON PAPER CO. * PM - "TRIM"
 MADISON, ME.

MACHINING TOLERANCES

1.	or 1.0000 = ±.04
1.0	" 1.0000 = ±.02
1.00	" 1.0000 = ±.01
1.000	" 1.0000 = ±.005

MAT'L DRAWING-PT NO MATERIAL DESCRIPTION SIZE OR PATT NO WEIGHT QTY REQ WANTED

THIS PRINT IS THE PROPERTY OF JONES DIVISION, BELOIT CORPORATION. THE INFORMATION HEREON IS SUBMITTED IN CONFIDENCE

FIRST USED ON SER. NO. BC-363
 5.018890138777

CUSTOMER ASSY-HORIZONTAL SHARK PULPER W/ COVER

DATE 11-2-88 MODEL 3620

DRAWN APP'VD ENG MJD [Signature] [Signature] [Signature]

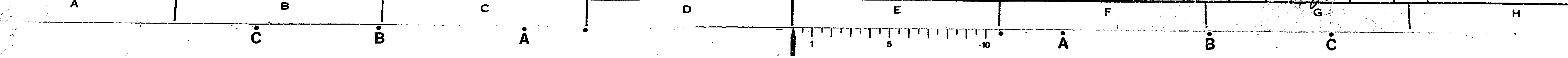
SCALE SH 10/3 D54-100747

BELOIT JONES DIVISION BELOIT CORPORATION, DALTON, MASS., U.S.A. 01226

BEARING UNIT L/A 54-LA -BU

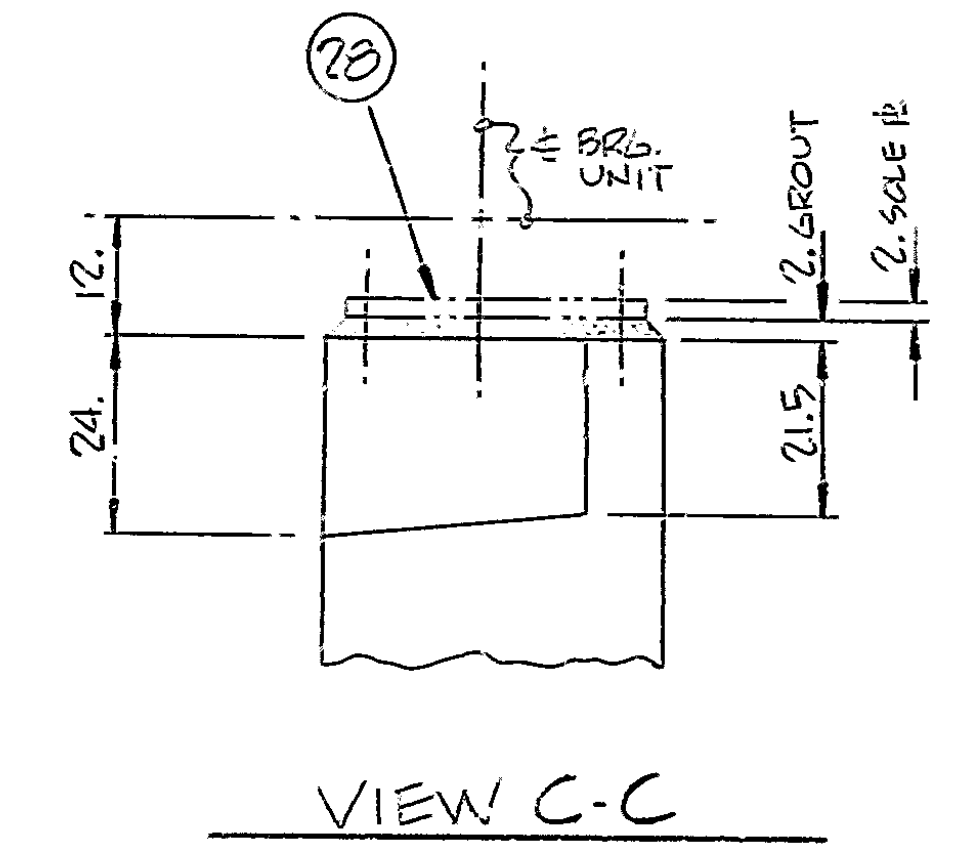
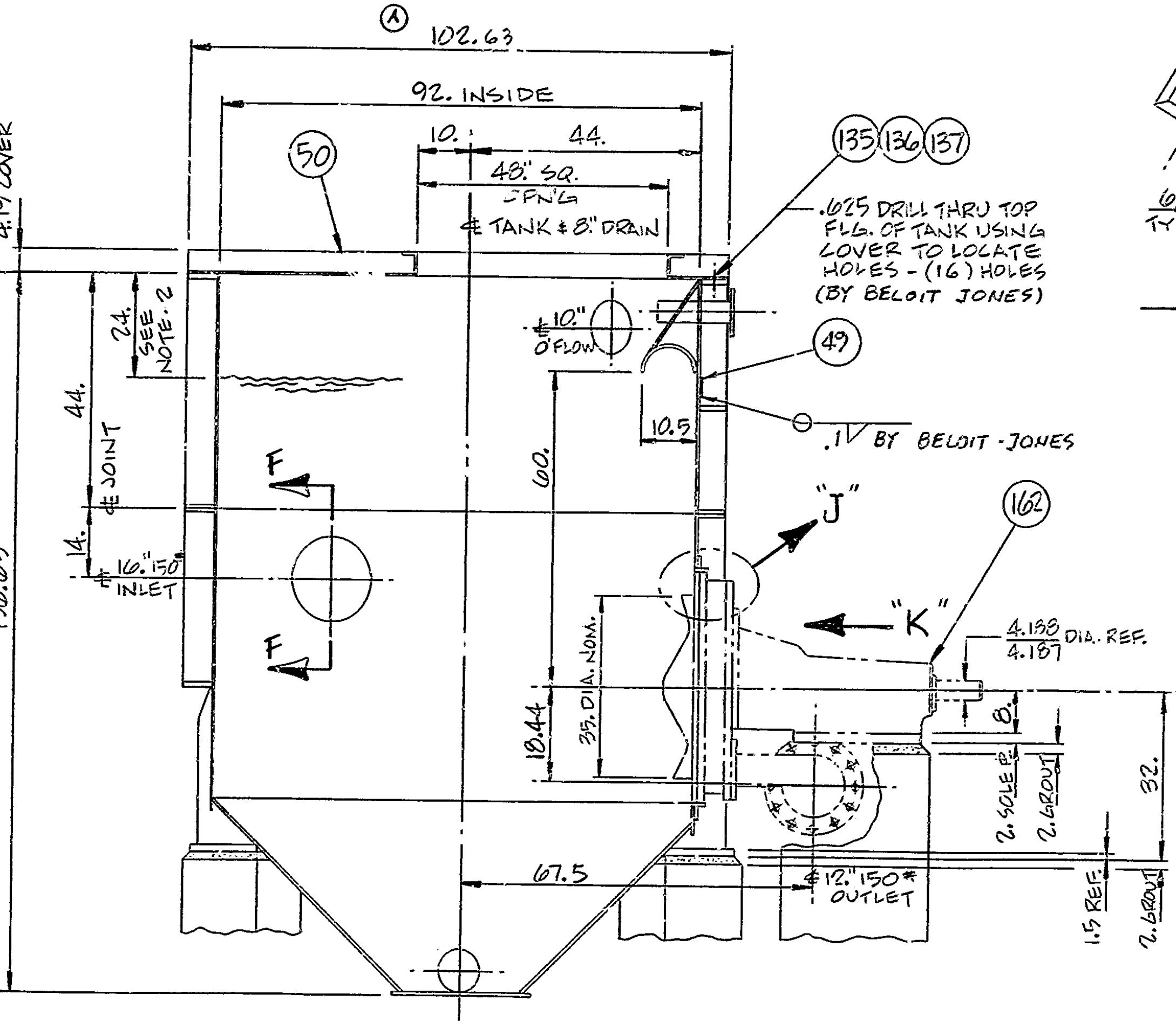
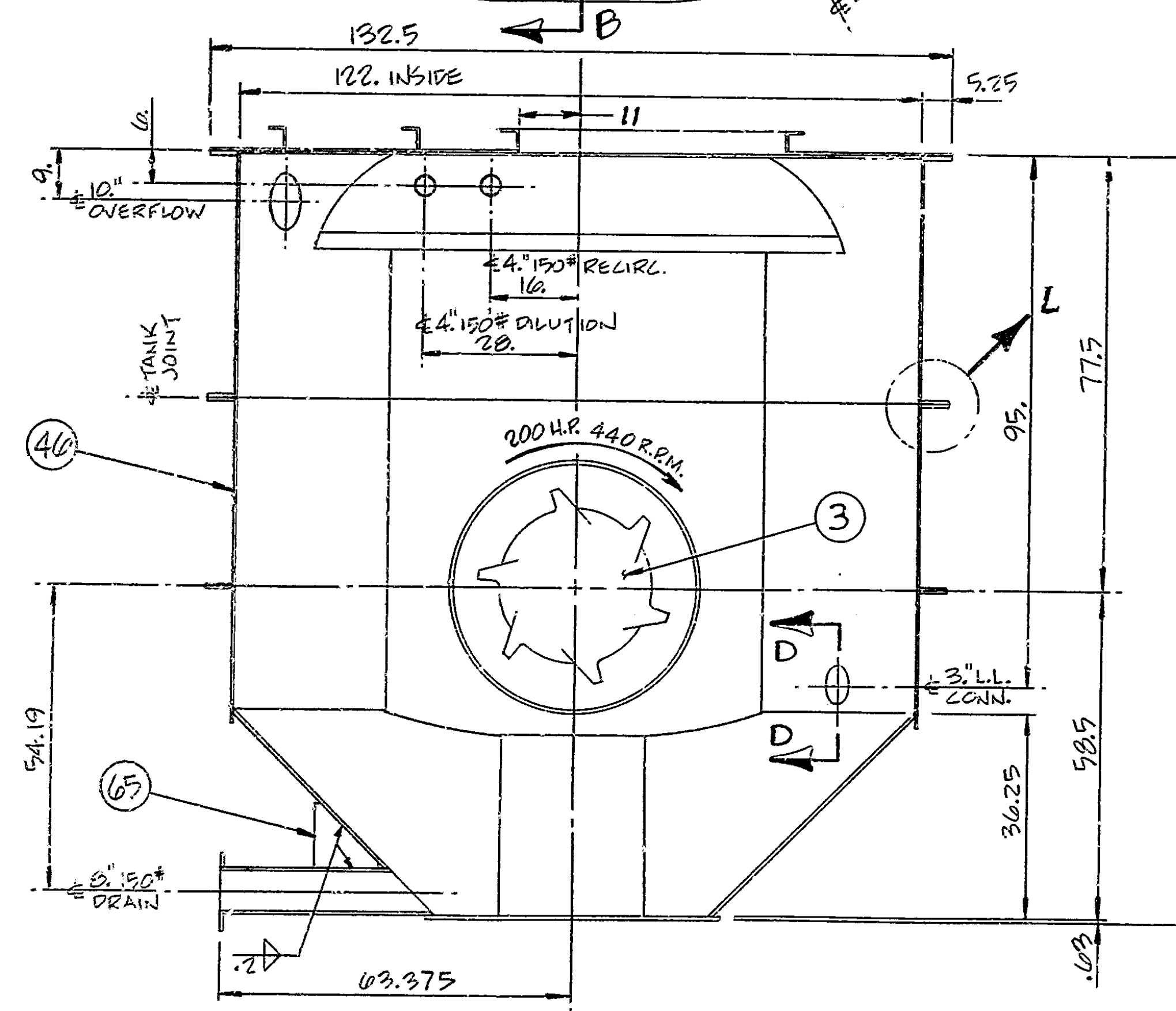
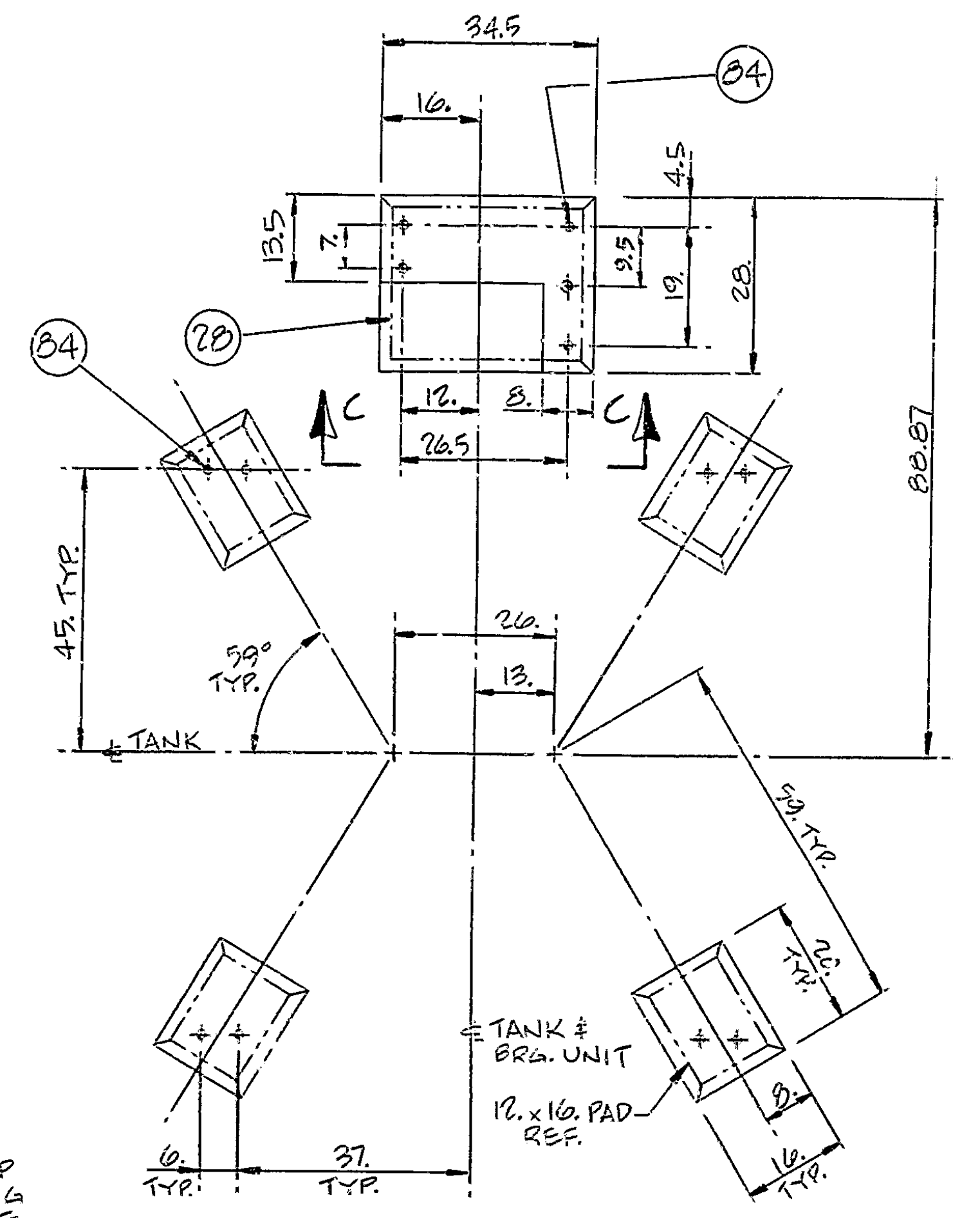
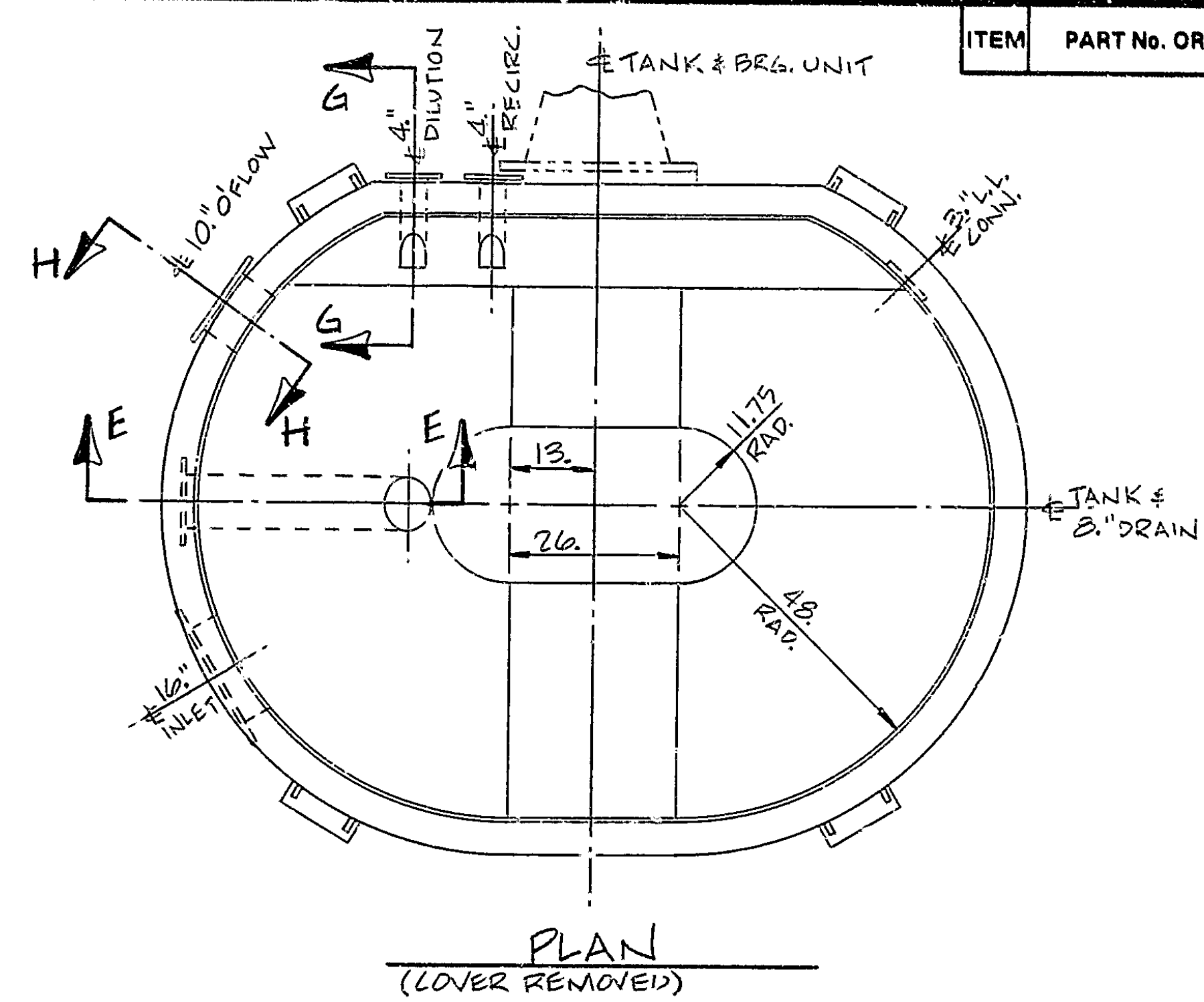
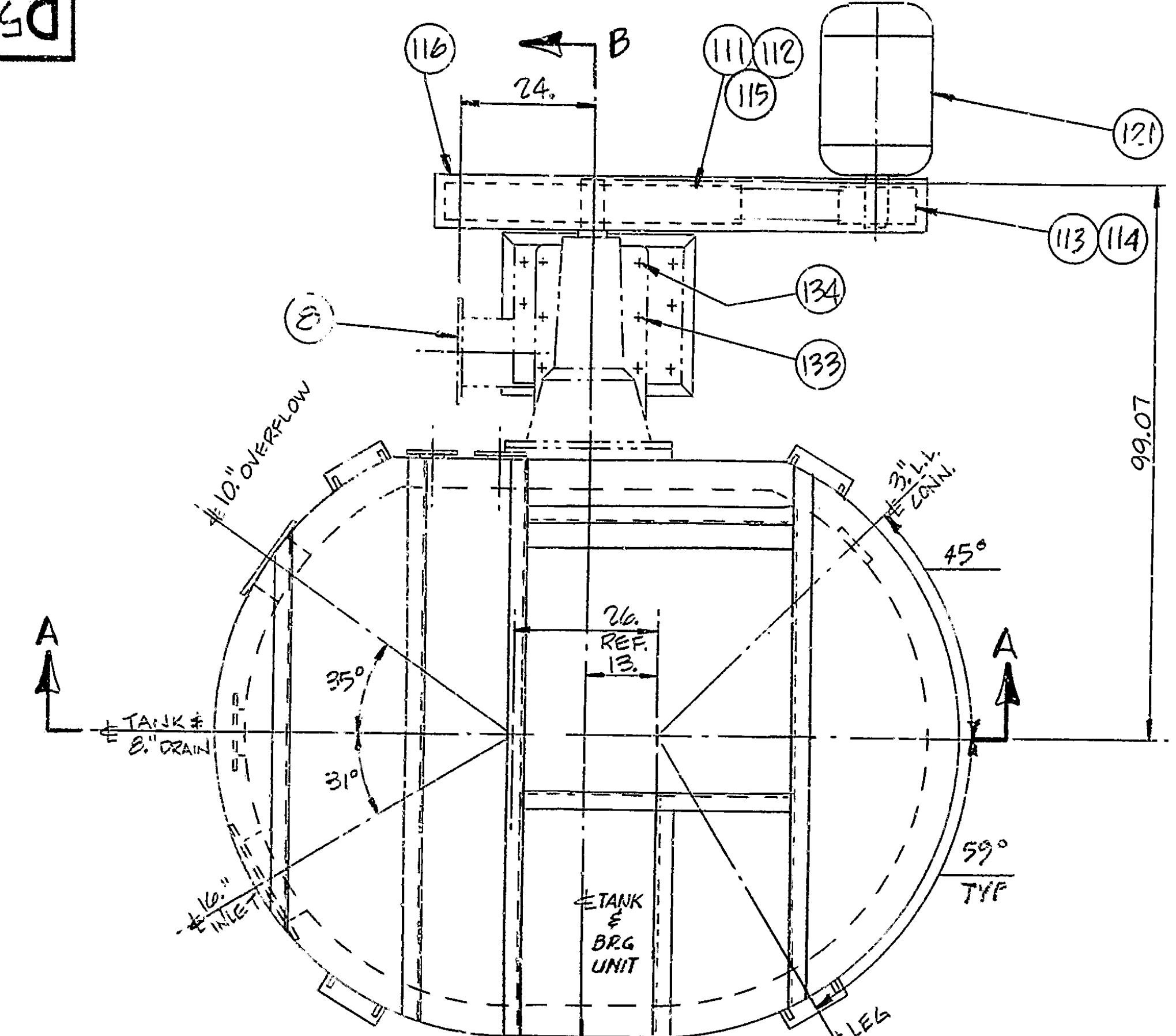
ITEM	PART NO.	MATERIAL	DESCRIPTION	QTY
161			SLEEVE (SHAFT)	
162	D54-200001-62	STL.	BEARING ASSY PARTS "EXIST."	1
			REF. DATA N°	
163			SHAFT	
164			SOLE PLATE (BEARING UNIT)	
165			CIRCULATING OIL SYSTEM	
166			NAME PLATE MTG. DWG.	
167				
168				
169				

TANK & COVER, ADD NOTE-14	11-17-88	AJ.H	
ADD LETTER DESIGNATION TO MAT'L OF			
REV	ALTERATIONS	DATE	BY
SUPERSEDES	SUPERSEDED BY		



D54-100747

ITEM	PART No. OR SIZE	MATL.	DESCRIPTION	GROUP & QTY.							
				1	2	3	4	5	6	7	8

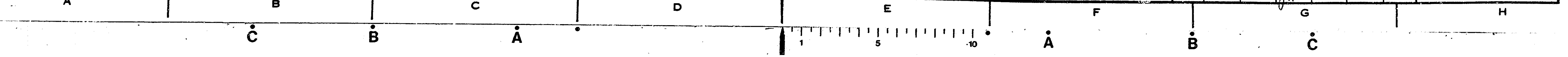


ADD NAMEPLATE, VIEW "L"	11-18-88	AJ.H
A 102.63 WAS 102.5, MOVE OPEN.		
REV	ALTERATIONS	DATE
SUPERSEDES		SUPERSEDED BY

UNLESS OTHERWISE SPECIFIED:

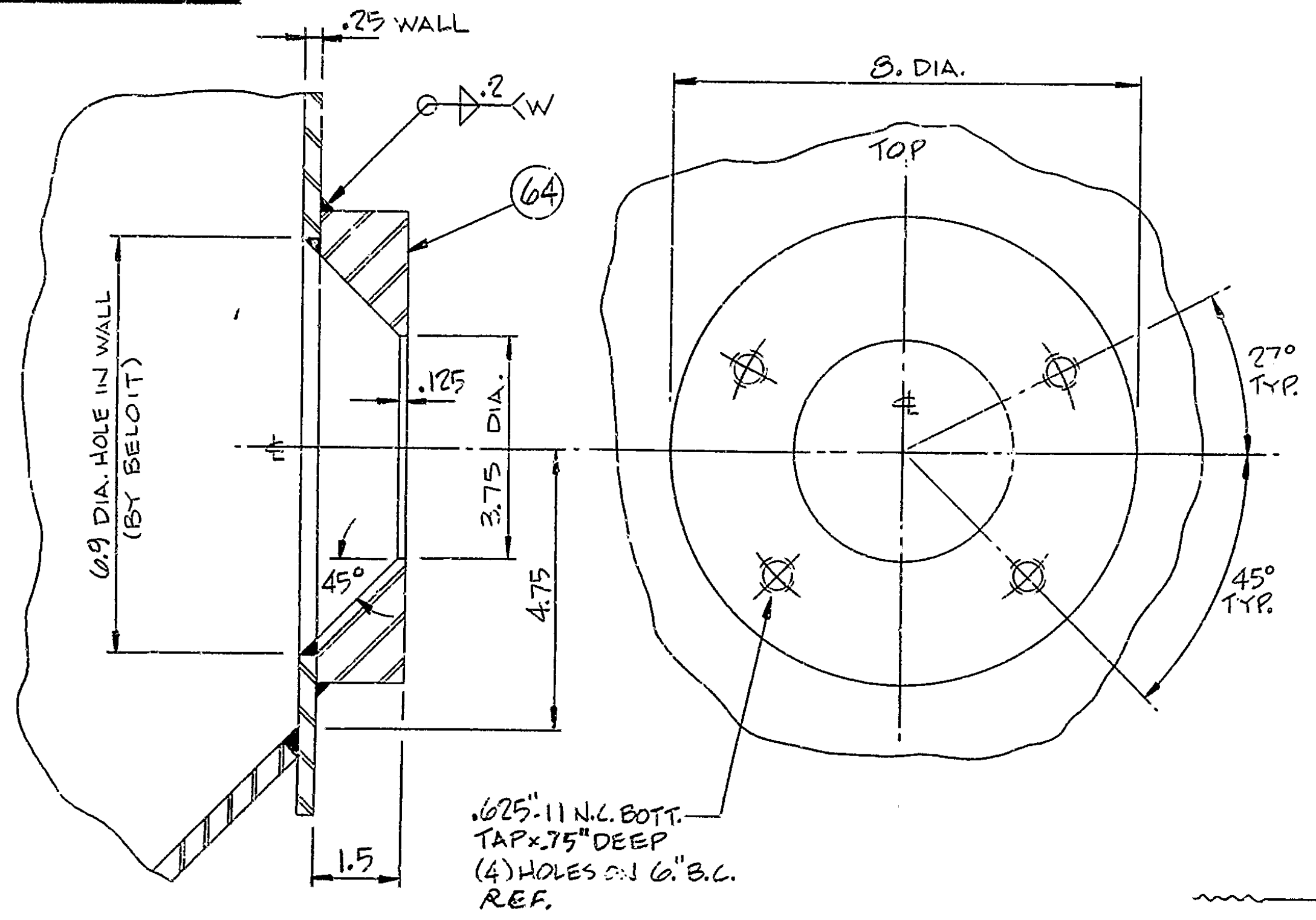
MACHINING TOLERANCES		
1.	or	1/1000
1.0	or	1.0/1000
1.00	or	1.00/1000
1.000	or	1.000/1000

DASH NO.	MAT'L-DRAWING-PT NO	MATERIAL	DESCRIPTION	SIZE OR PATT NO	WEIGHT	QTY. REQ	WANTED
FOR CUTOFF, FABRICATION AND CASTING TOLERANCES AND STD SHOP PRACTICES, SEE FACTORY MANUAL SECTION 2.			FIRST USED ON		CUSTOMER ASSY-HORIZONTAL		
ANGULARITY TOLERANCES 1/4°			SIMILAR TO		D54-100646 SHARK PULPER W/COVER		
PROJECTION			DATE		MODEL 3620		
BELOIT JONES DIVISION			DRAWN		D54-100747		

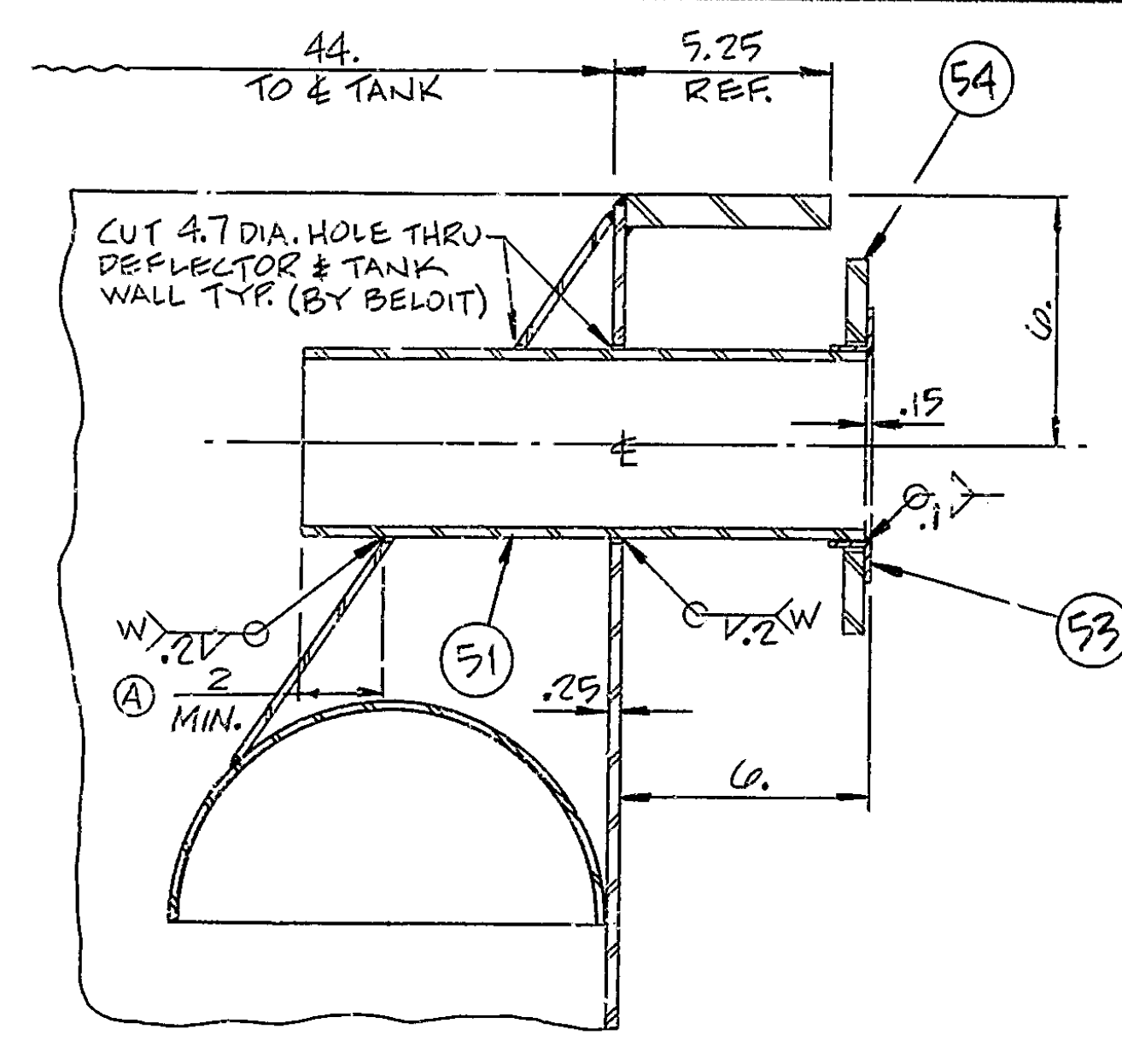


D54-100747

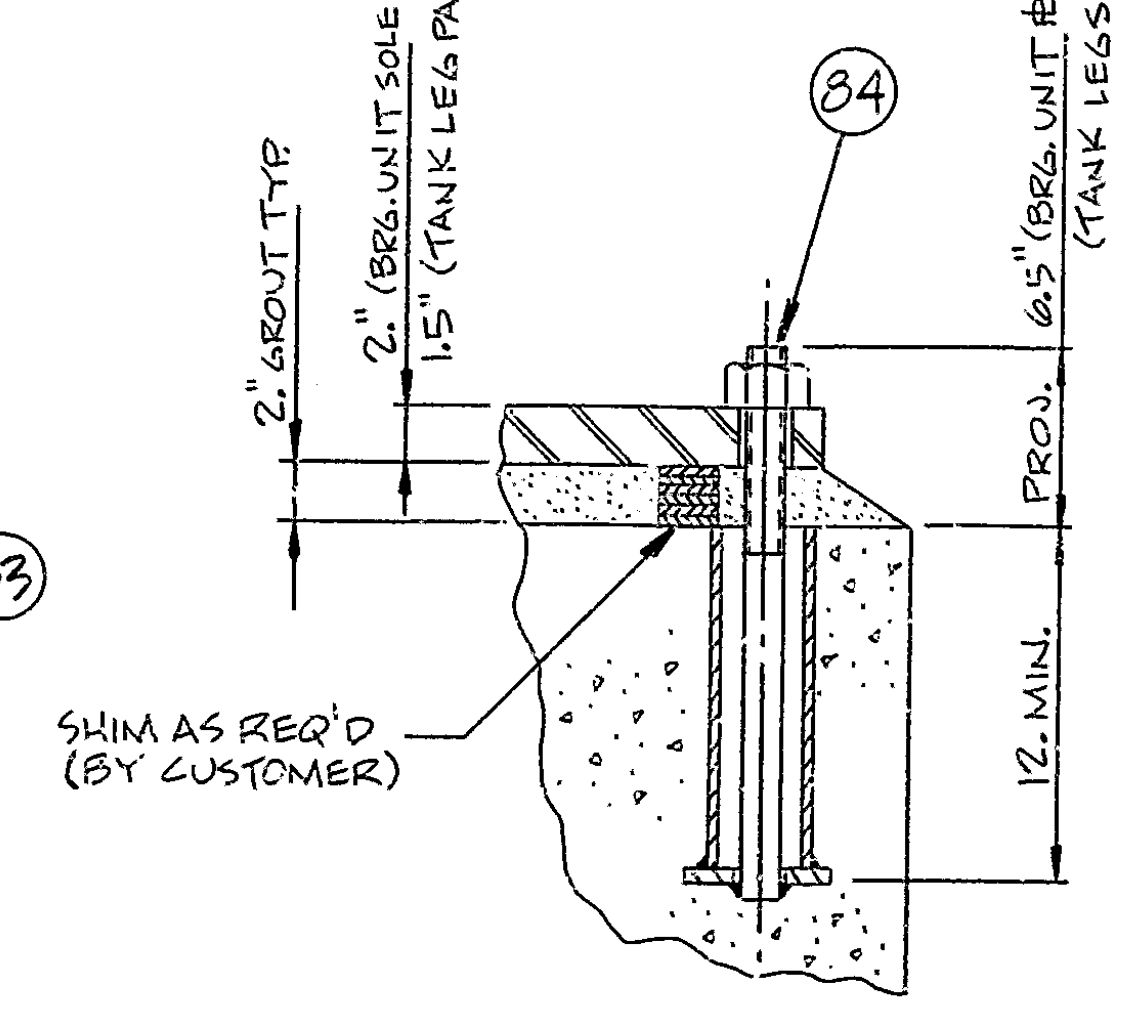
ITEM	PART No. OR SIZE	MATL.	DESCRIPTION	GROUP & QTY.														
				1	2	3	4	5	6	7	8							



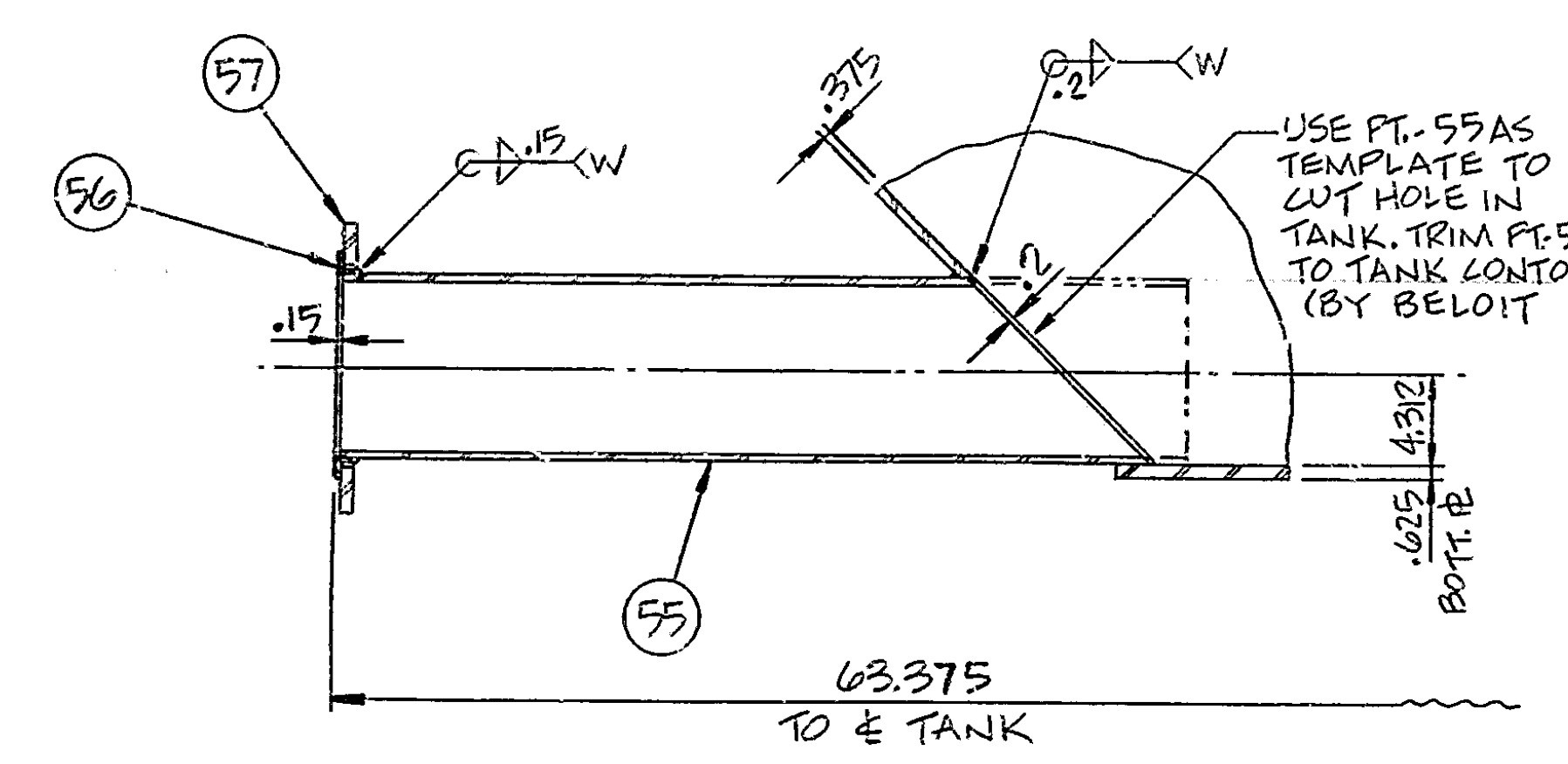
SECTION D-D
SCALE: 1:2



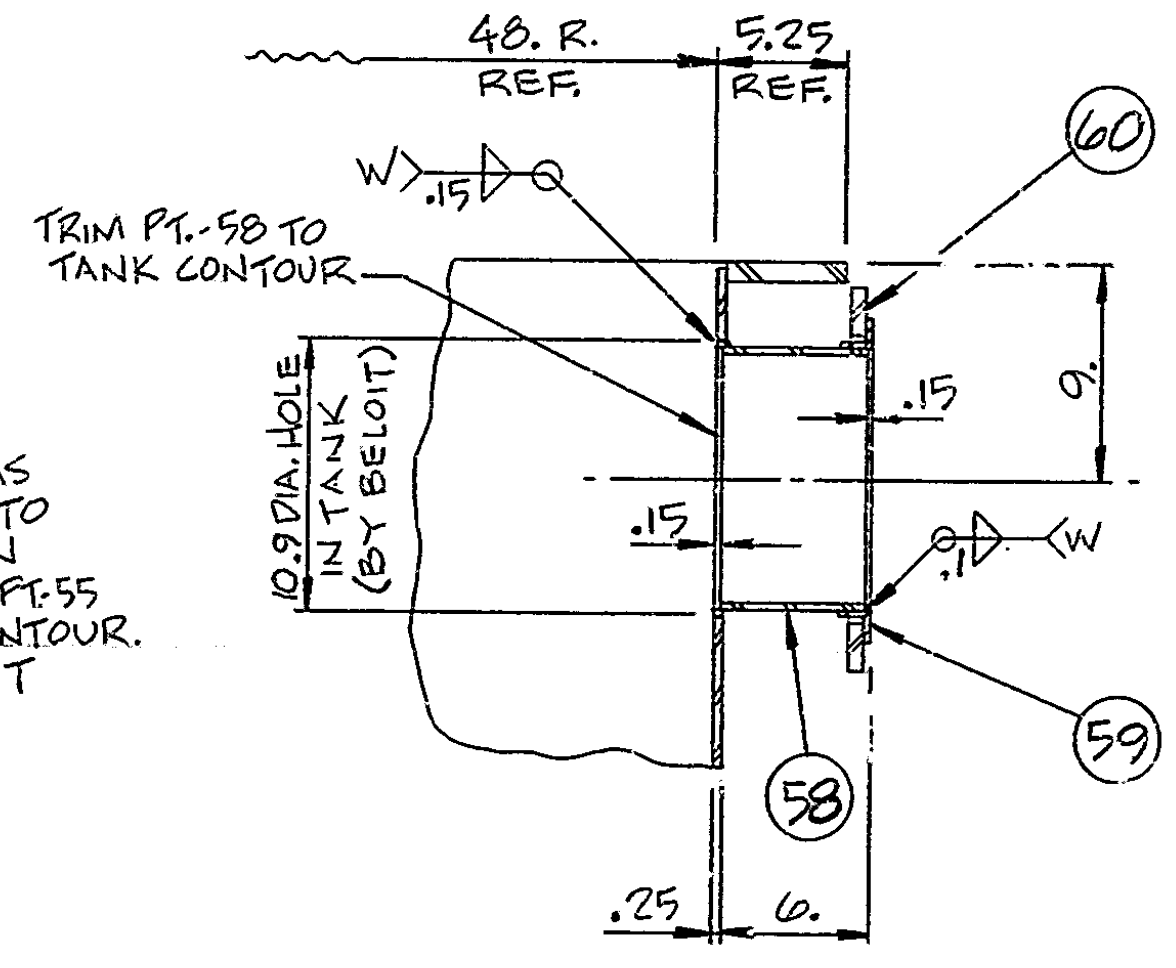
SECTION G-G
SCALE: 1:4 TYP. (?) 4" PIPES



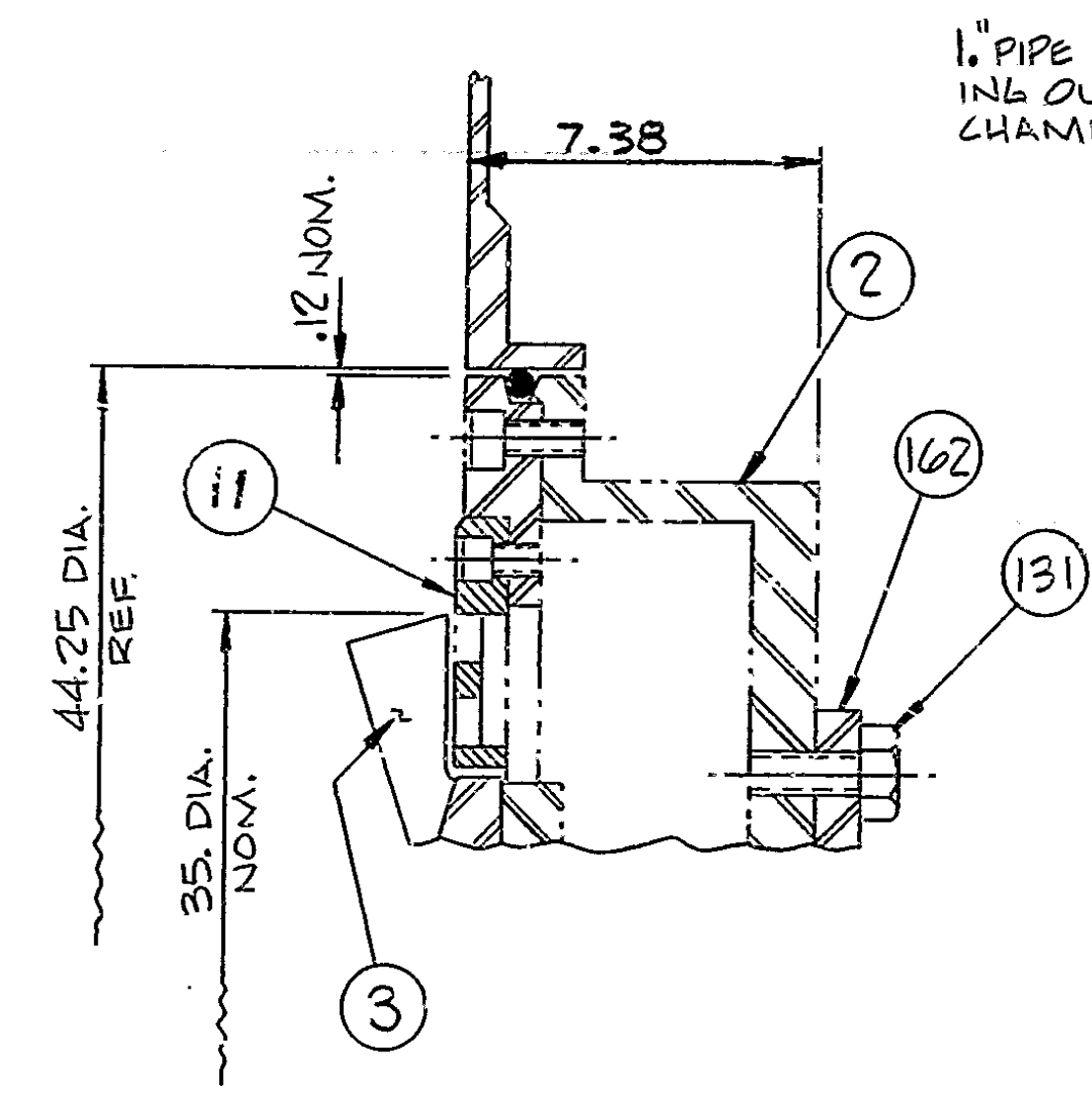
SUGGESTED ANCHOR BOLT ARRANGEMENT
N.T.S.



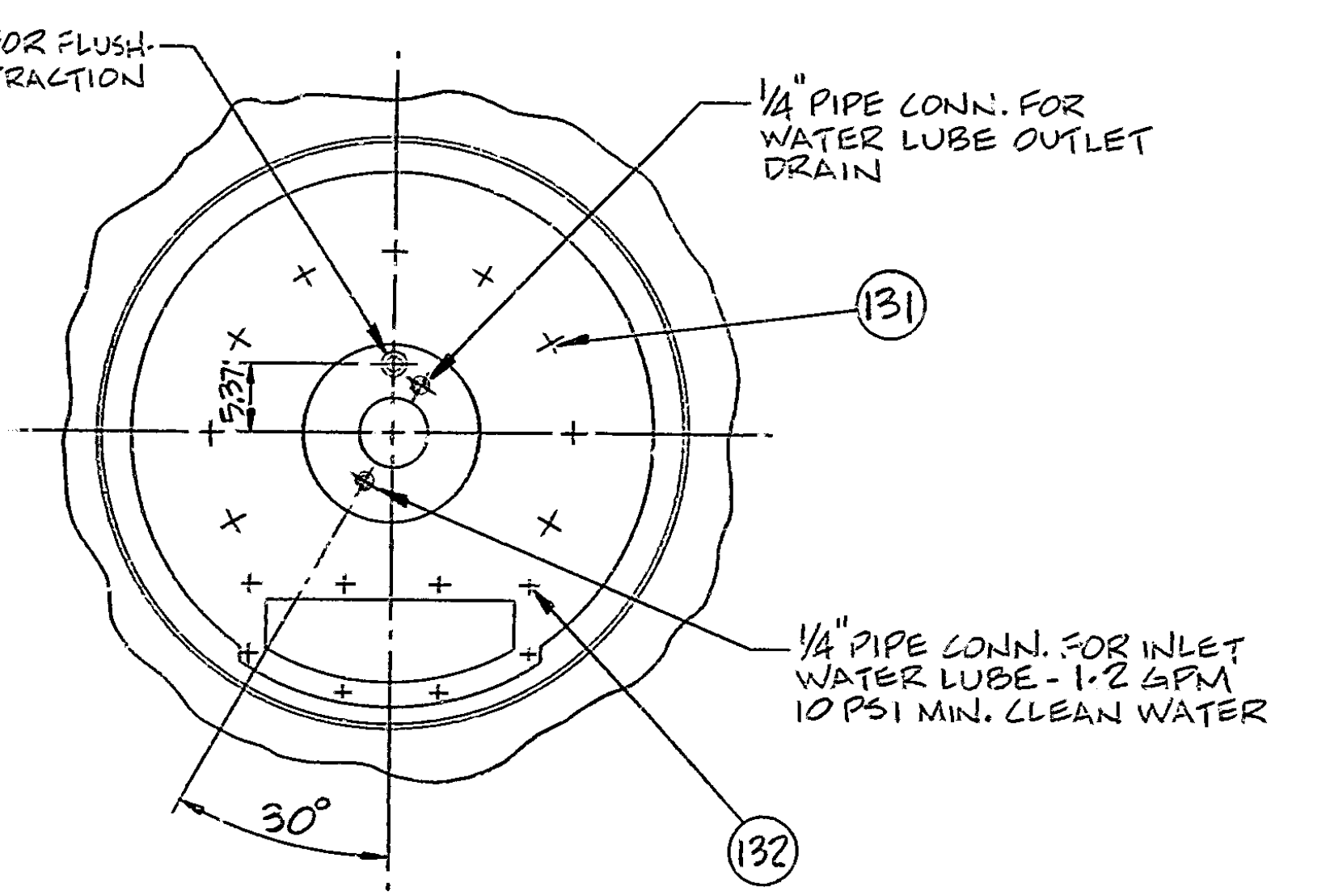
SECTION E-E
SCALE: 1:8



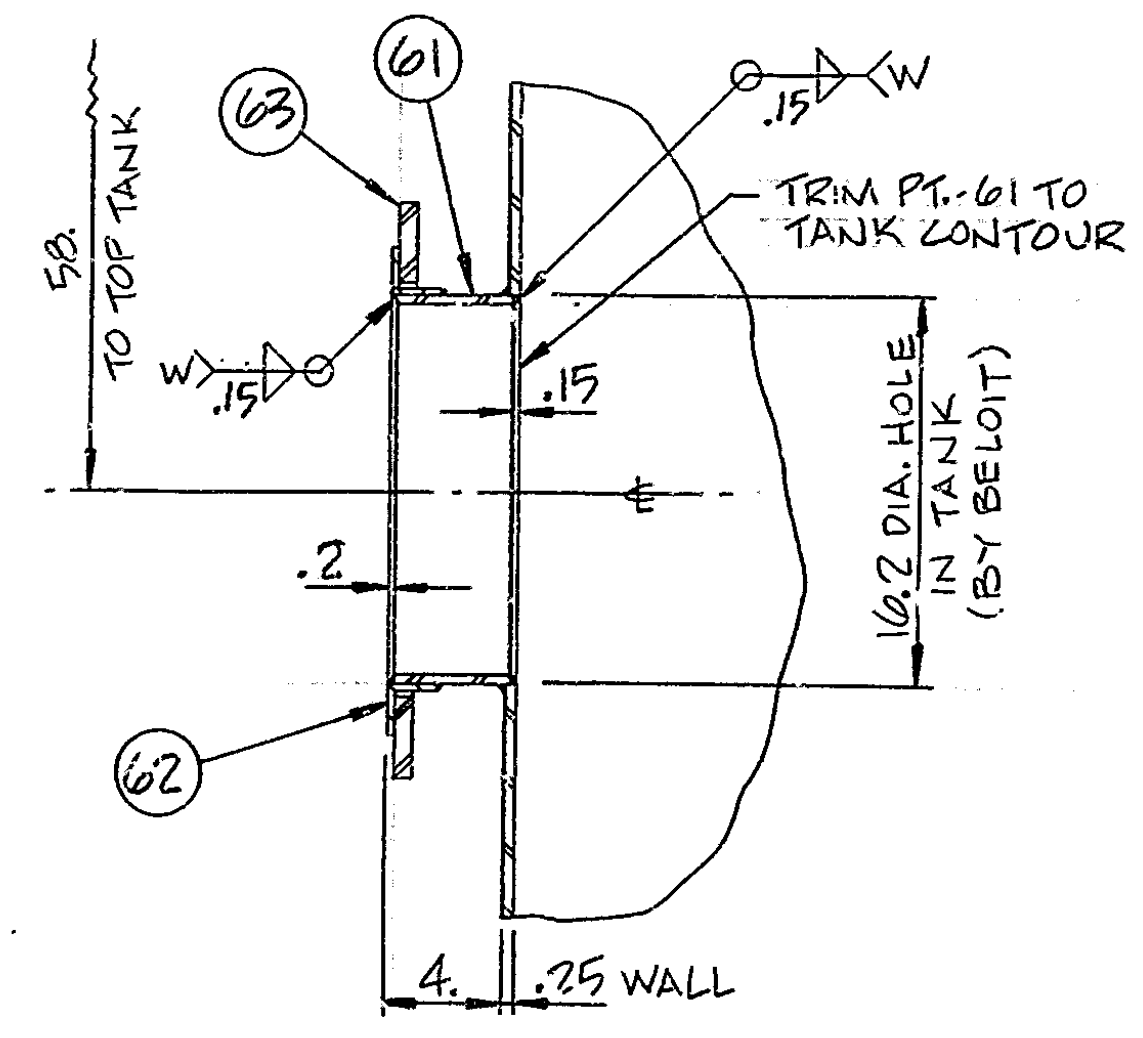
SECTION H-H
SCALE: 1:8



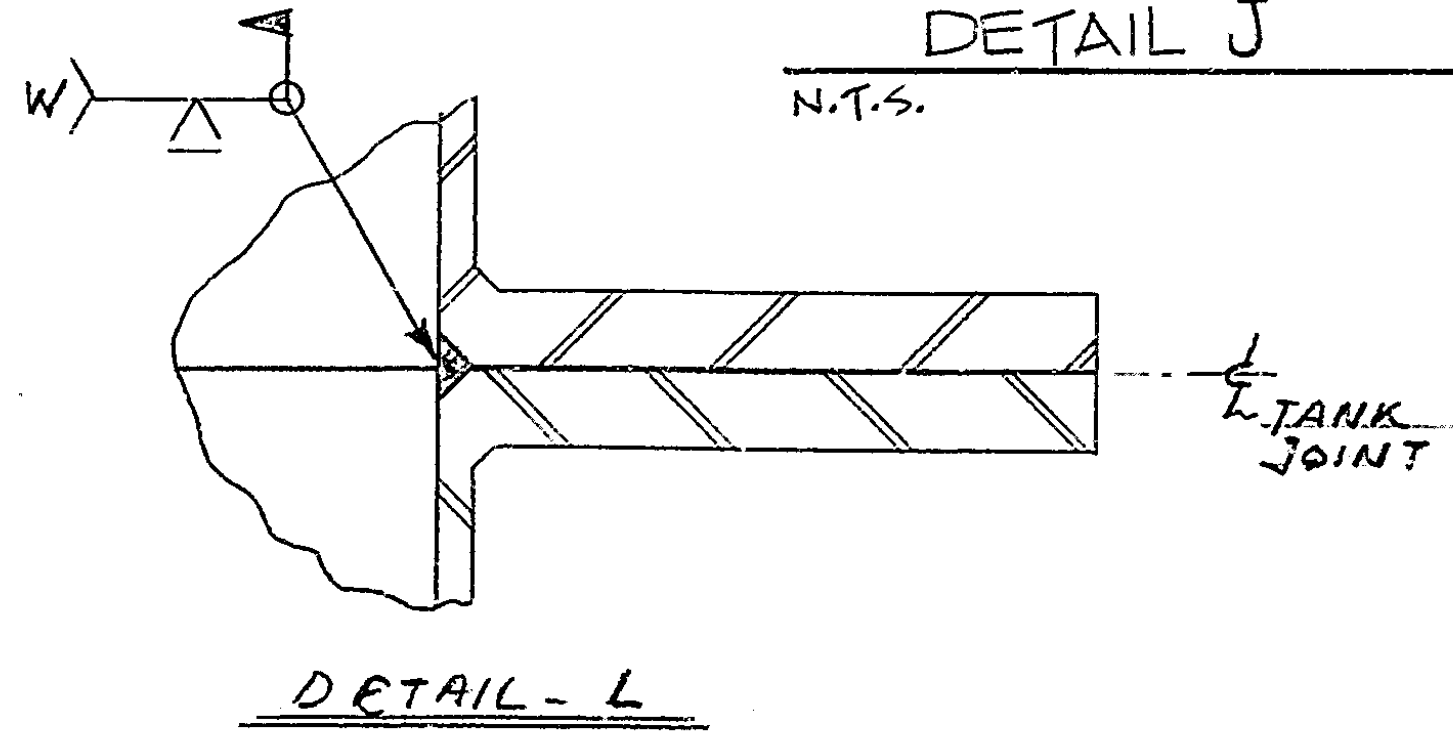
DETAIL "J"
N.T.S.



VIEW "K"
N.T.S. (BRG. UNIT, OUTLET CONN. & FOUNDATION OMITTED FOR CLARITY)



SECTION F-F
SCALE: 1:8



DETAIL - L

UNLESS OTHERWISE SPECIFIED:		MACHINING TOLERANCES		DASH		MAT'L-DRAWING-PT NO		MATERIAL		DESCRIPTION		SIZE OR PATT NO		WE:GHT		QTY.REQ		WANTED	
1.	or	17000	"	+	.04														
1.0	or	1.0000	"	+	.02														
1.00	or	1.0000	"	+	.01														
1.000	or	1.000	"	+	.005														
FOR CUT OFF, FABRICATION AND CASTING TOLERANCES AND STD SHOP PRACTICES, SEE FACTORY MANUAL SECTION 2.																			
ANGULARITY TOLERANCES ±1/2°																			
PROJECTION										FIRST USED ON									
THIS PRINT IS THE PROPERTY OF JONES DIVISION, BELOIT CO., CORPORATION THE INFORMATION HEREON IS SUBMITTED IN CONFIDENCE										CUSTOMER ASS'Y - HORIZONTAL									
SIMILAR TO D54-100646										SHARK PULPER N/COVER									
DATE 11-2-88										MODEL 3020									
DRAWN MJD										NOTED 3 OF 3									
CHKD AJ.H										D54-100747									
APP'VD [Signature]																			
ENG. [Signature]																			
IE. [Signature]																			
SCALE 3 OF 3																			

VIEW "L" ± 7.38 DIM	11-18-86	AJ.H	
A ADD .2 MIN. TAP WAS 1" DP, ADD			
REV	ALTERATIONS	DATE	BY
SUPERSEDES	SUPERSEDED BY		

JOSEPH MERRITT & CO