

RECOMMENDED DESIGN DRAWING

THIS DRAWING DESCRIBES GL&V PULP GROUP'S RECOMMENDED DESIGN FOR OPTIMAL SYSTEM PERFORMANCE. THIS DRAWING SHOULD BE USED AS A GUIDELINE WHEN DEFINING THE INSTALLATION OF A NEW SYSTEM. GL&V WILL GLADLY REVIEW AND PROVIDE INPUT ON CUSTOMER'S DETAILED INSTALLATION DRAWINGS; HOWEVER, THIS DRAWING WILL NOT BE MODIFIED TO REFLECT ACTUAL PIPING/STANDPIPE DESIGN.

FINAL STAGE

SERIAL NUMBER: 04H2641
CLEANPAC FRU
TYPE: FMZ 0/3
3 CLEANERS OPERATING
0 CLEANERS BLANKED OFF

STAGE 3

SERIAL NUMBER: 04H2640
CLEANPAC 700 SATELLITE
TYPE: SB-4
4 CLEANERS OPERATING
0 CLEANER BLANKED OFF

STAGE 2

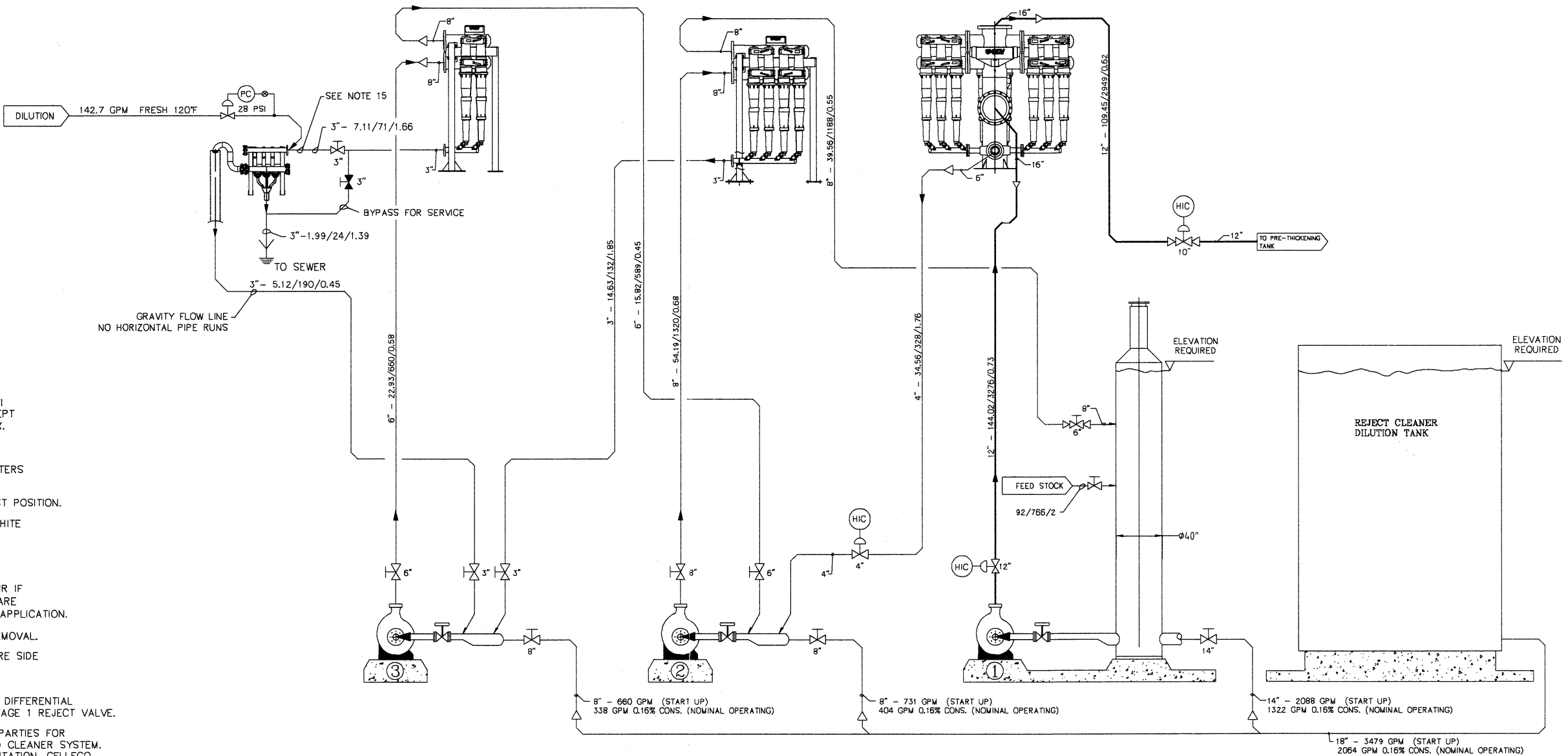
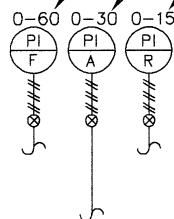
SERIAL NUMBER: 04H2639
CLEANPAC 700 SATELLITE
TYPE: SB-8
8 CLEANERS OPERATING
0 CLEANER BLANKED OFF

STAGE 1

SERIAL NUMBER: 04H2638
CLEANPAC 700 BANK
TYPE: BP-3H (2 x S-6 AND 1 X S-8)
20 CLEANERS OPERATING
0 CLEANERS BLANKED OFF

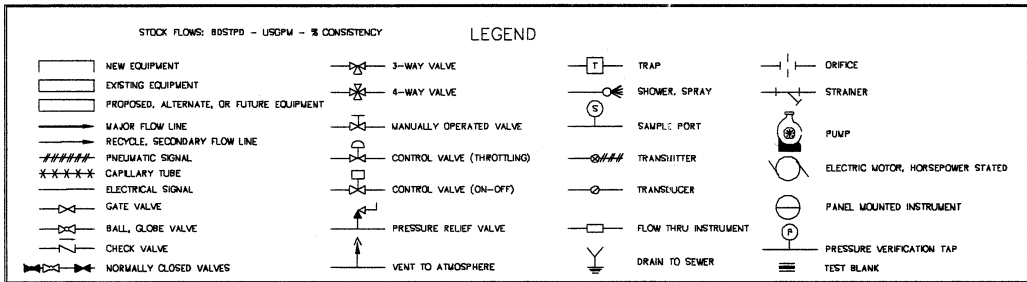
Rev	Revision	Date	Revised	Approved
0	MANUFACTURERS RECOMMENDED DESIGN	5/12/04	AFB	RMS
1	REMOVED DILUTION TANK AND 1 STAND PIPE	5/18/04	AFB	-
2	RELOCATED PIPING AND ADDED TANK	5/19/04	AFB	-
3	STAGE 1 WAS BP-3V			-
	UPDATED DILUTION PIPING AND FLOWS	5/20/04	AFB	-

PRESSURE GAUGE RANGE
(TYP. FOR ALL BANKS)



NOTES:

- ALL STAGES ARE TO HAVE A MIN. OF 5 PSI BACK PRESSURE ON ACCEPT HEADER, EXCEPT THE FINAL STAGE WHICH HAS THE RCC BOX. THIS STAGE IS TO HAVE A MIN. OF 10 PSI BACK PRESSURE ON ACCEPT HEADER.
- VALVE SIZES ARE GIVEN IN NOMINAL DIAMETERS FOR VEE-PORT KNIFE GATE VALVES.
- VALVES WITH ACTUATORS SHOULD FAIL LAST POSITION.
- ALL VALVES ARE TO BE LOCATED BELOW WHITE WATER LEVEL.
- PRESSURE TRANSMITTER RANGE ARE TO COINCIDE WITH GAUGE RANGES.
- INACCURATE PRESSURE READING WILL OCCUR IF PRESSURE GAUGE AND DIAPHRAGM SEALS ARE NOT TEMPERATURE CALIBRATED FOR EACH APPLICATION.
- STANDPIPES ARE USED FOR EXCESS AIR REMOVAL.
- SAMPLE VALVES ON ALL LINES ON PRESSURE SIDE "UPSTREAM OF VALVE".
- IF ACCEPT PRESSURE IS NOT CONSTANT, A DIFFERENTIAL PRESSURE CONTROLLER IS REQUIRED ON STAGE 1 REJECT VALVE.
- WE FEEL IT WOULD BE BENEFICIAL TO ALL PARTIES FOR GL&V TO REVIEW PIPING DRAWINGS AROUND CLEANER SYSTEM. WITHOUT REVIEW OF PIPING AND INSTRUMENTATION, CELLECO WILL NOT ASSUME ANY RESPONSIBILITY FOR PERFORMANCE GUARANTEES OR RUNABILITY.
- WHITE WATER CHEST COULD DRAIN INTO STANDPIPES AND DILUTION WATER SOURCES IF ELEVATIONS ARE NOT REVIEWED DURING THE DESIGN STAGE.
- VALVE TO BE SLOW OPENING TO PREVENT WATER HAMMER. VALVE TO FAIL CLOSED. VALVE TO HAVE POSITIVE STOP TO KEEP VALVE
- ALL PIPING TO THIS UNIT MUST BE SUPPORTED, AS THIS CLP WAS NOT DESIGNED TO CARRY ANY PIPING LOAD.
- ALL REDUCERS SHOULD BE AT LEAST THREE (3) PIPE DIAMETERS FROM CLEANER HEADERS.
- PIPE MUST BE AS SHORT AS POSSIBLE WITHOUT ANY CHANGE IN ELEVATION.



THIS DRAWING SUPERSEDES DRAWING
NA00027776-401 DATED 05/19/04

FOR REFERENCE ONLY
CUSTOMER: MADISON PAPERS IND.
P.O. NO.: 4533604
SERIAL NO. EQUIPMENT NO. S.O. NO.
04H2638 THRU 04H2641 NA00027776
DATE:05/19/04 BY:A BLICHMANN

This document and its contents are the property of GL&V Pulp Group, Inc. and must not be copied, reproduced, transmitted or disclosed to any third party without the consent of GL&V Pulp Group, Inc. Construction will be protected.

MADISON PAPER IND
MADISON, ME.

Drawn	Scale	Size	Qty. Ordered	Groundwood
AFB	NONE	D	-	
Checked	Date	FILE		
RMS	5/12/04	NA00027776		
Title				
P&I DIAGRAM FOR CLP 700 SYSTEM				
Customer P.O. No. 4533604				
Drawing No. NA00027776-401				REV. 3