





CHARGING AIR



STARTING AIR



LT - WATER



1 bar = 0,1 MPa ≈ 1 kp / cm<sup>2</sup>



HT - WATER



FUEL



LUBRICATING OIL



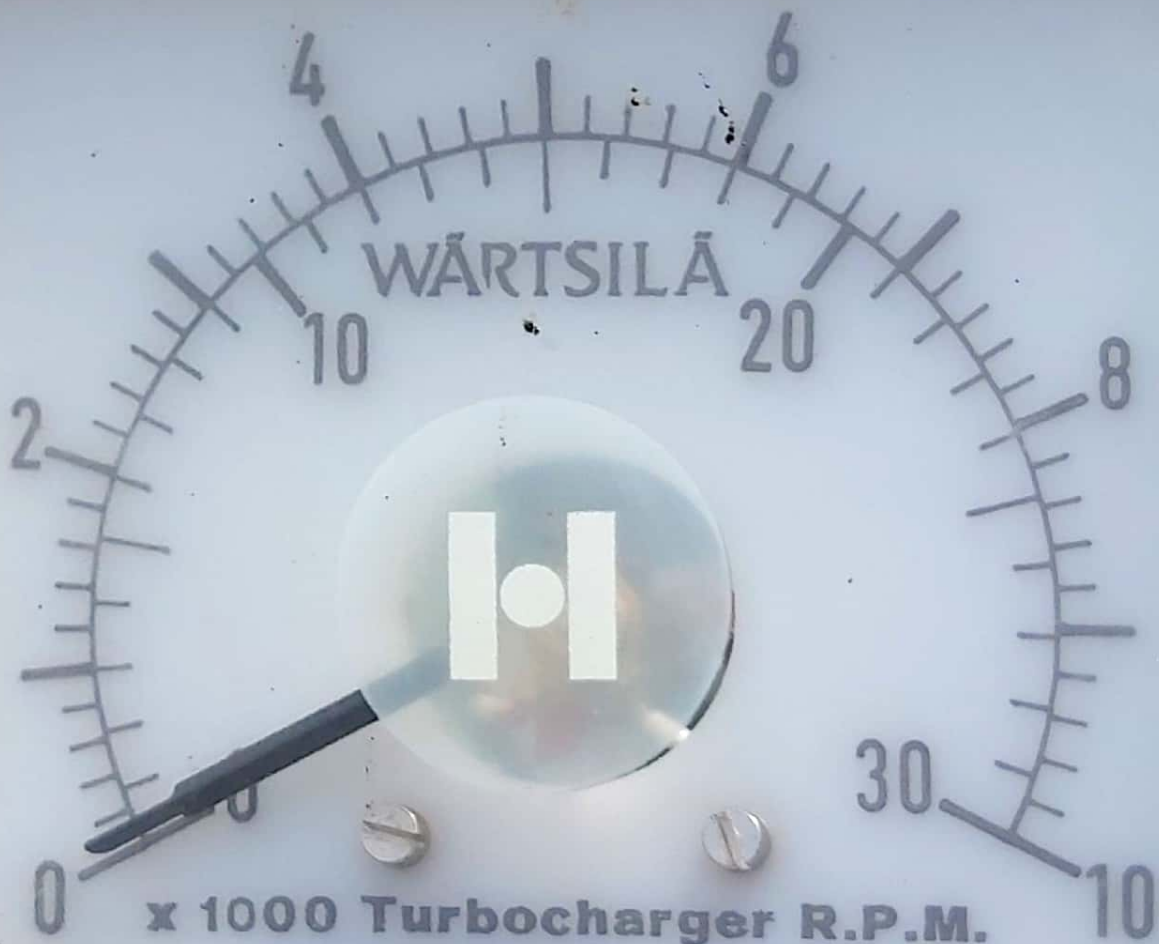
029325 h

0 3 11 1 2



1029325 h

15 102 1 ☆



x 1000 Turbocharger R.P.M.  
x 100 Engine R.P.M.

029325 h

15 102 1 ☆