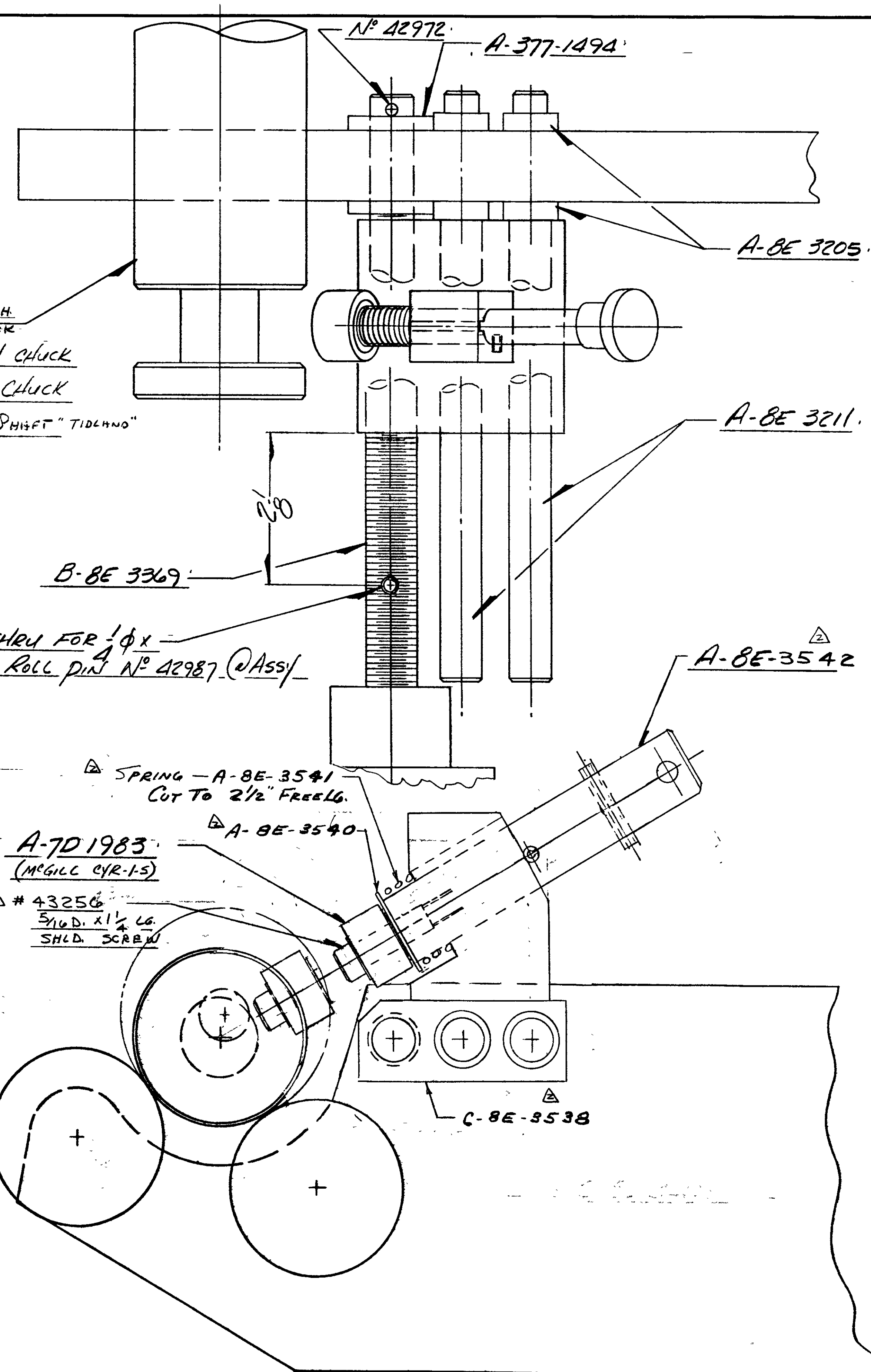


60" WIDE SDU UNWIND

NOTE: SHEET 2 IS "D" SIDE

THIRD ANGLE PROJECTION 		UNLESS OTHERWISE SPECIFIED DIMENSIONS ARE IN INCHES BREAK SHARP EDGES & CORNERS TOLERANCES		PROTECTIVE FINISH
DIMENSIONS FRACTIONAL ± 1/64 DECIMAL ± .005 ANGLES ± 1/2° UNFINISHED SURFACES ± 1/32 SURFACE ROUGHNESS ± 125 PERPENDICULARITY ON FINISHED SURFACES - 005/1 000		MATERIAL		TITLE: 60" WIDE PARENT ROLL SDU BASIC MAT. WITH PARTS DRAWN: LYNCH DATE: 2-18-87 APPR: LYNCH SCALE: HALF NO. 1 REV. 1 DATE: 2-18-87 BY: LYNCH DATE: 2-18-87 NO. 1 REV. 1 DATE: 2-18-87 BY: LYNCH DATE: 2-18-87



- SELECT CORE SHAFT
- 3" CORE ~ C-8E-3215 HUB
 - 6" CORE ~ B-8E-3305 HUB & B-8E-3306 CLAMP
 - 6" CORE ~ B-8E-3516 AIR CHUCK
 - 3" CORE
- C-8E-3497 2 1/2" MECH CHUCK
 - C-8E-3499 3" MECH CHUCK
 - C-8E-3499 3" AIR CHUCK
 - C-8E-3526 3" AIR SHIFT "TIDLAND"

.250 DIA. THRU FOR 1/4" X
 .256 1" LG. ROLL PIN N° 42987 @ ASSY

△ SPRING - A-8E-3541
 CUT TO 2 1/2" FREE LG.

△ A-8E-3540

A-7D1983
 (MCGILL CYR-15)

△ # 43256
 5/16" D. X 1 1/2" LG.
 SHLD. SCREW

NOTE: SHEET 1 IS "E" SIZE.

SHEET 2 OF 2

THIRD ANGLE PROJECTION 		UNLESS OTHERWISE SPECIFIED DIMENSIONS ARE IN INCHES BREAK SHARP EDGES 0.020R TOLERANCES FRACTIONAL DIMENSIONS = ± 1/64 DECIMAL DIMENSIONS = ± .005 UNFINISHED CUTOFF, FABRICATION & SHEET METAL DIMENSIONS = ± 1/32 ANGLES = ± 1/2° SURFACE ROUGHNESS = 125 ✓ PERPENDICULARITY ON FINISHED SURFACES = .005/1.000		PROTECTIVE FINISH MATERIAL	FMC CORPORATION PACKAGING MACHINERY DIVISION GREEN BAY, WISCONSIN TITLE <u>SURFACE DRIVEN UNWIND - 60"</u> DWN BY _____ DATE _____ APPD _____ SCALE _____ DWG NO. <u>8E 1327</u> SIZE
REVISIONS NO ECH REVISIONS BY DATE	2 BEEB'D UP PLUNGER FOR ASSY. B 5-23-65 1 SEE ECN B 11/23/65	This drawing and all information contained hereon is the property of FMC Corporation. It shall not, wholly or in part, be copied, reproduced or used by others without express written permission from FMC.			