

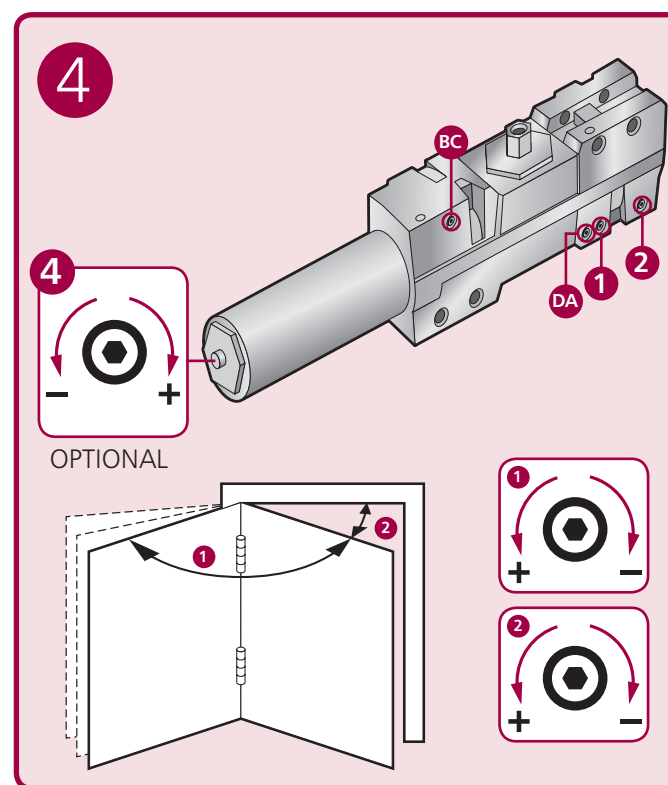
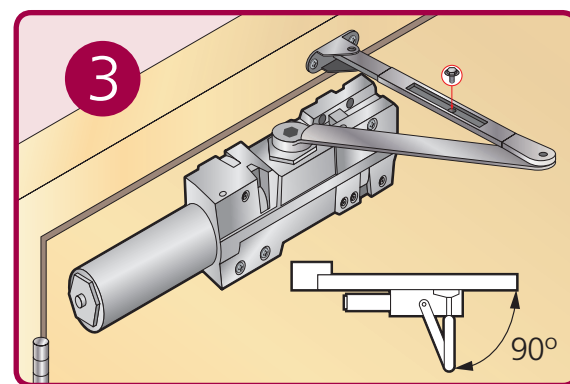
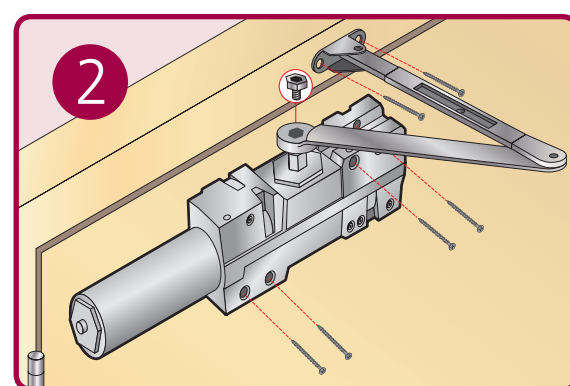
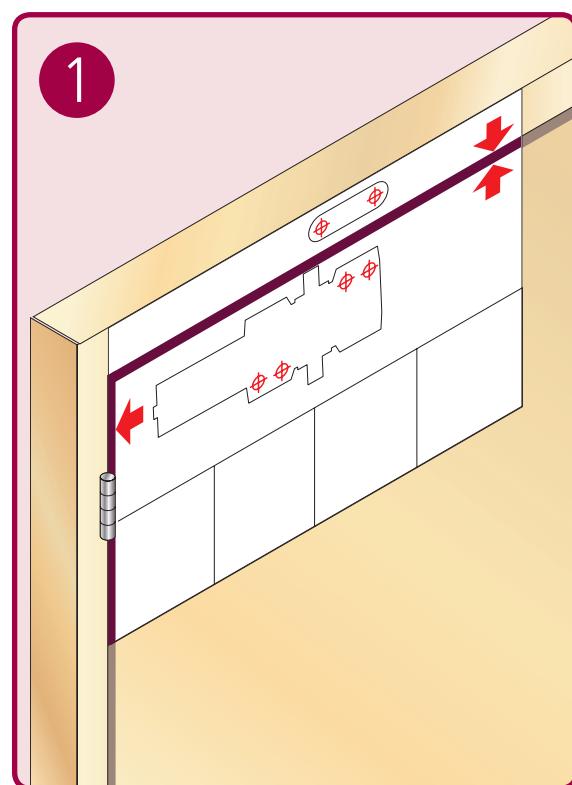
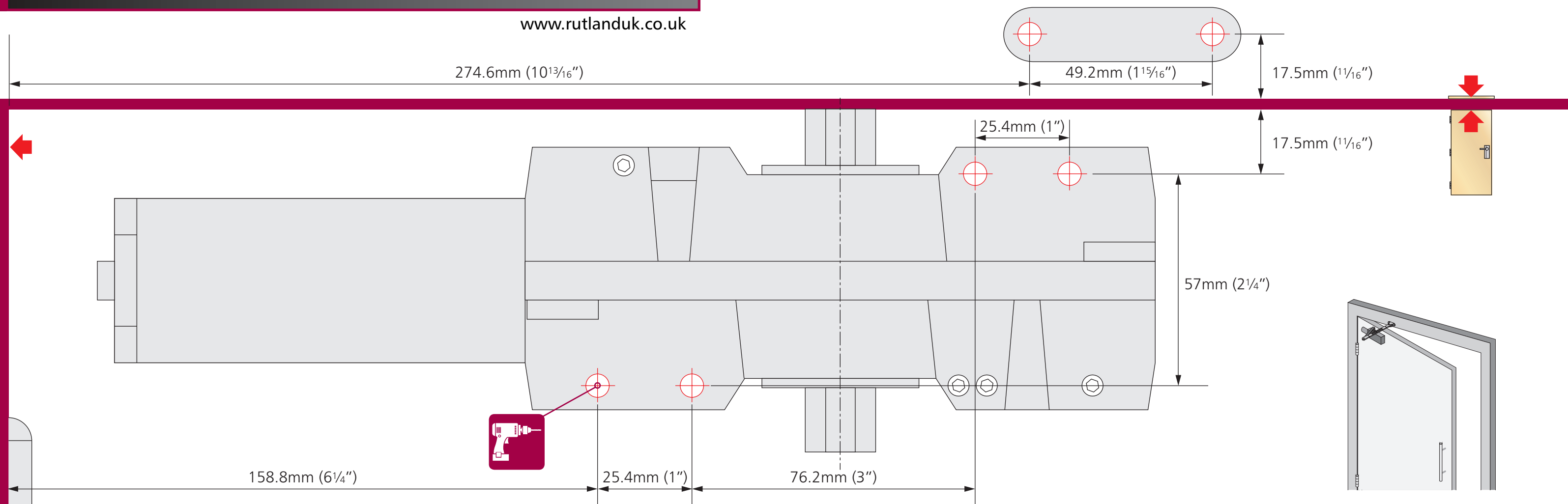


# Standard Arm Closer TS10106

106.1



www.rutlanduk.co.uk



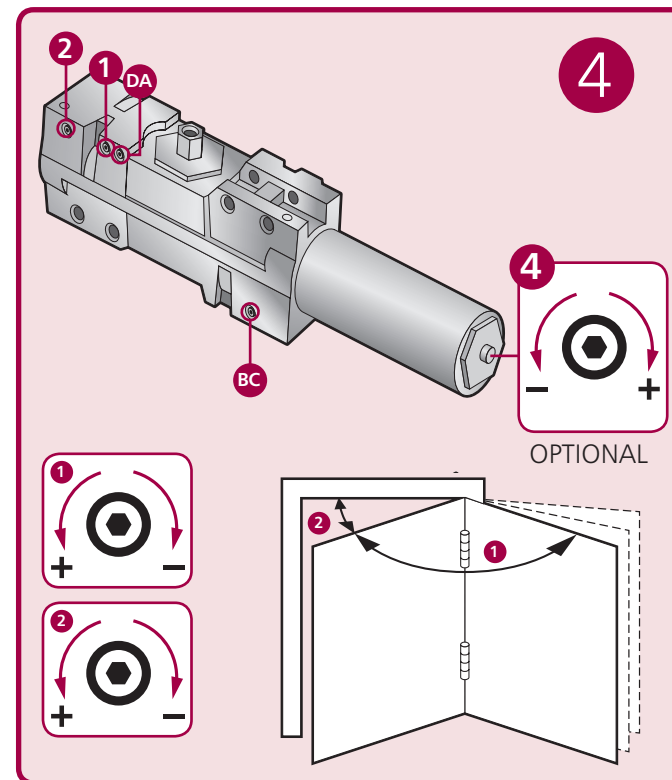
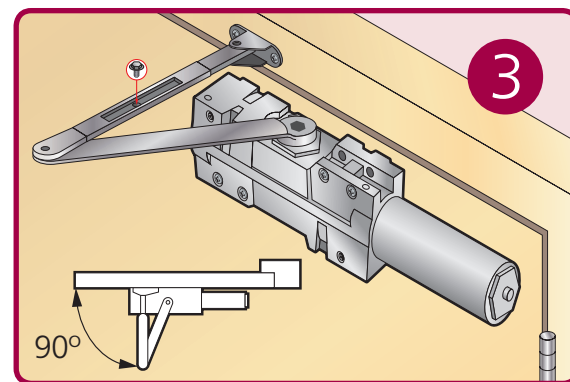
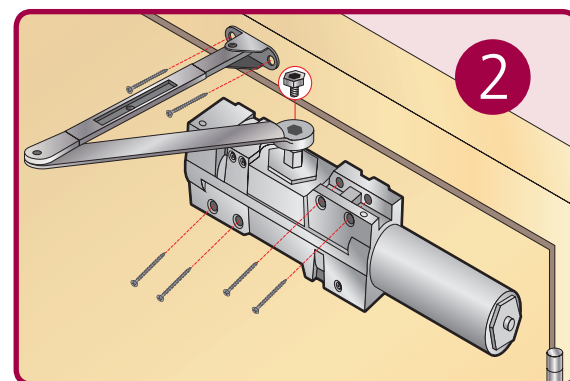
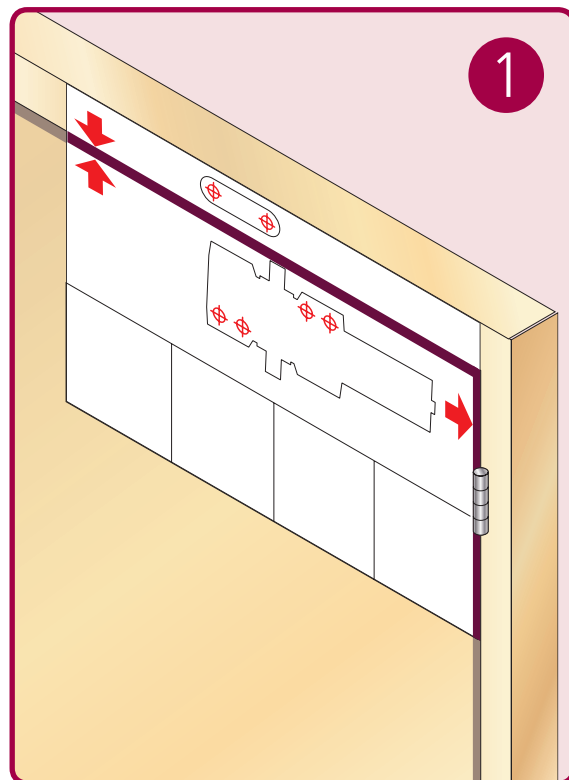
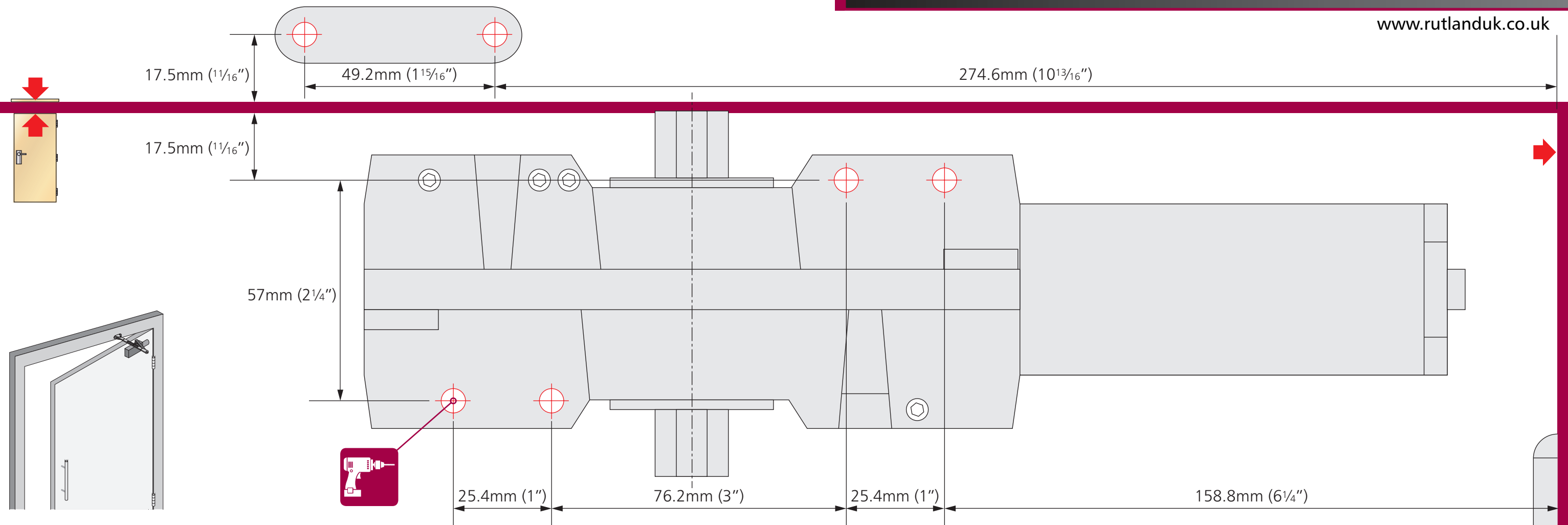
## EN 1-6 Power Adjustment

4				
No. of turns	EN Size	Max. door width	Max. opening angle	Max weight
-8	1	800mm	180°	40
-5	2	850mm	180°	45
*0	3	950mm	180°	60
+5	4	1100mm	180°	80
+9	5	1250mm	110°	110
+12	6	1400mm	110°	120

\* FACTORY PRE-SET

THE PINION BOLT MUST BE TIGHTENED TO 12NM

© NO PART OF THIS INSTRUCTION CAN BE COPIED OR STORED IN ANY WAY OR FORM MANUALLY OR ELECTRONICALLY WITHOUT THE FULL PERMISSION OF RUTLAND



## EN 1-6 Power Adjustment

4				
No. of turns	EN Size	Max. door width	Max. opening angle	Max weight
-8	1	800mm	180°	40
-5	2	850mm	180°	45
*0	3	950mm	180°	60
+5	4	1100mm	180°	80
+9	5	1250mm	110°	110
+12	6	1400mm	110°	120

\* FACTORY PRE-SET