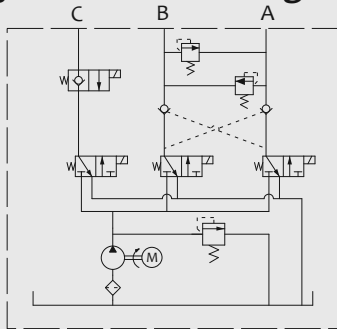


POWER UNITS FOR SNOW PLOW

General Description

- High Pressure Gear Pump/DC Motor/Multi-functional Manifold/Valve/Tank
- Dual Pilot-operated Check Valve
- The 3-Way,2-Position Solenoid Valve

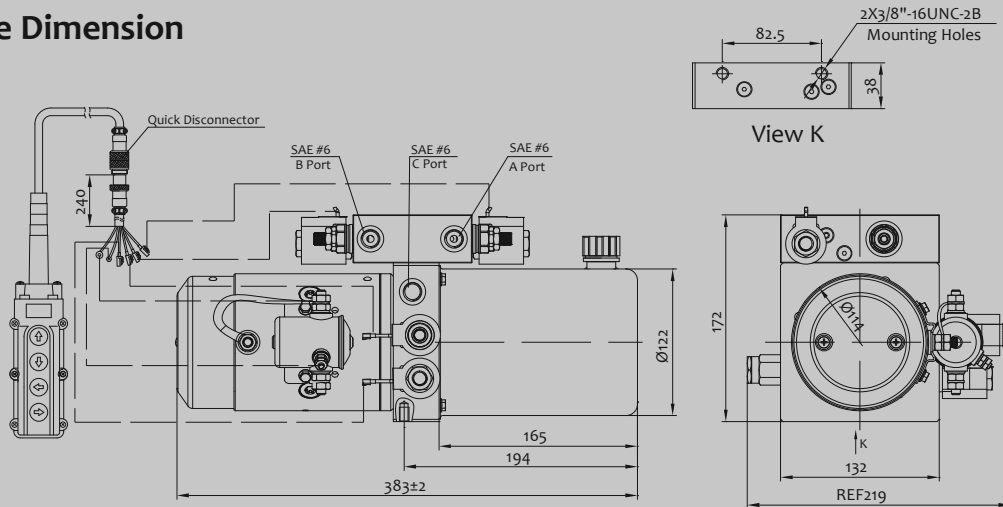
Hydraulic Circuit Diagram



Special Notes

- This type of power unit works at S3 duty cycle, i.e., intermittent duty, 30 seconds on-load and 270 seconds off-load.
- Clean all the hydraulic parts concerned before mounting the power unit.
- Viscosity of the hydraulic oil should be 15~68 cst, which should also be clean and free of impurities. N46 hydraulic oil is recommended.
- Check the oil level in the tank after the initial operation of the power unit.
- Oil changing is required after the initial 100 operation hours, afterwards once every 3000 hours.

Outline Dimension



Model Specifications

Model	Motor Voltage	Motor Power	Rated Speed	Displacement	System Pressure	Tank Capacity	Solenoid Valve Voltage
YBZ5—E1.2Y1W514/WUAAT1	12VDC	1.5KW	2500RPM	1.2ml/r	16MPa	1.5L	12VDC
YBZ5—E1.6Y1W514/WUAAT1				1.6ml/r			
YBZ5—E2.1Y2A514/WUAAT1	24VDC	2KW		2.1ml/r			
YBZ5—E2.5Y2A514/WUAAT1				2.5ml/r			

Remark: Please go to page 1 or consult our sales engineer for the different pump displacement, motor power or system pressure.