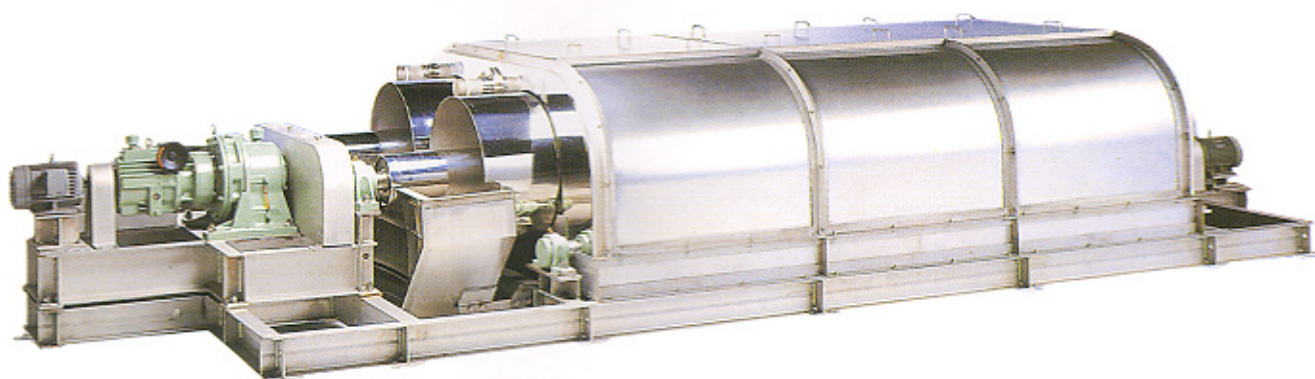
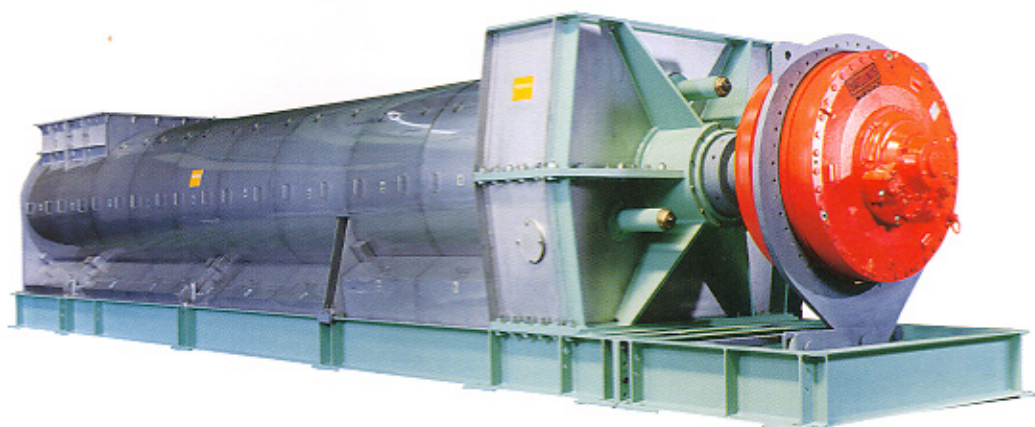




Screw Press and Rotary Screen Thickener for Pulp and Paper Applications



High Consistency Rotary Screen Thickener Model HC-RST W630D X 3000 L

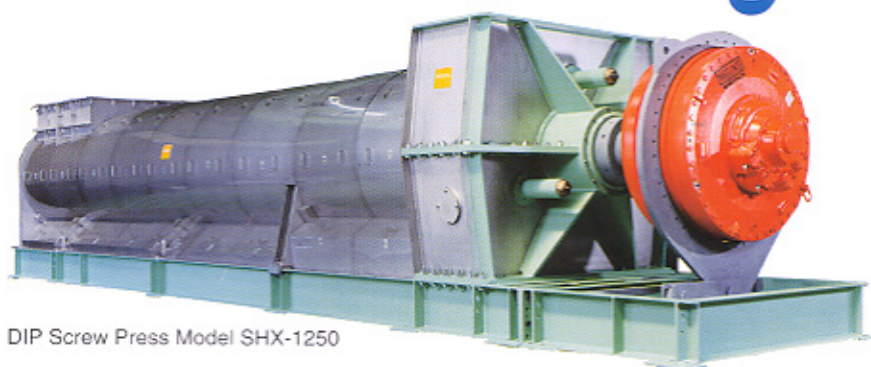


DIP Screw Press Model SHX-1250



FUKOKU KOGYO CO., LTD.

Stock Thickening



DIP Screw Press Model SHX-1250

FKC screw presses are used to thicken recycled fiber, kraft pulp, NSSC pulp, TMP and other mechanical pulps. FKC pulp thickening presses supply premium performance, easy operation and extremely low maintenance. Pulp presses are available in sizes up to 1,250mm diameter screws.

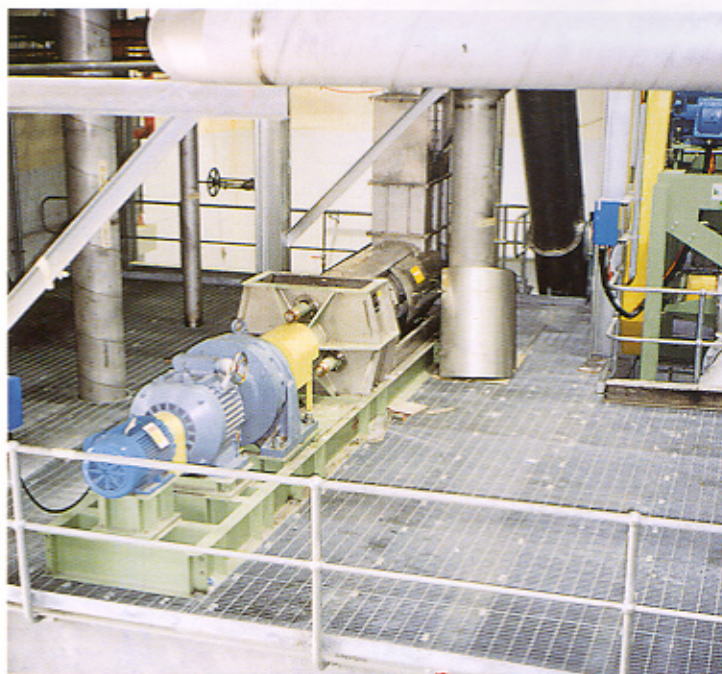
Stock Thickening

| Model | Capacity (BMT/24hours) |
|----------|---------------------------|
| SHX-550 | 25-60 |
| SHX-600 | 35-90 |
| SHX-700 | 45-120 |
| SHX-800 | 65-165 |
| SHX-850 | 75-190 |
| SHX-900 | 80-210 |
| SHX-1000 | 100-250 |
| SHX-1050 | 110-280 |
| SHX-1100 | 130-320 |
| SHX-1200 | 150-370 |
| SHX-1250 | 160-410 |

*The above assumes an inlet consistency of 3-10%, freeness of 120-250 CSF, and an outlet consistency of 30%.

*Bigger size (capacity) model than above is available, depending on the requirement.

Knots & Rejects Dewatering



Rejects Dewatering Screw Press at a Recycled Paper Mill

FKC screw presses are supplied to handle small and large quantities of rejects or knots. These presses are typically smaller in size, run at comparatively fast screw speeds, and are of extremely heavy duty construction. Common applications include dewatering pulp mill knots, screen and cleaner rejects, and recycle mill rejects.

Sludge Dewatering

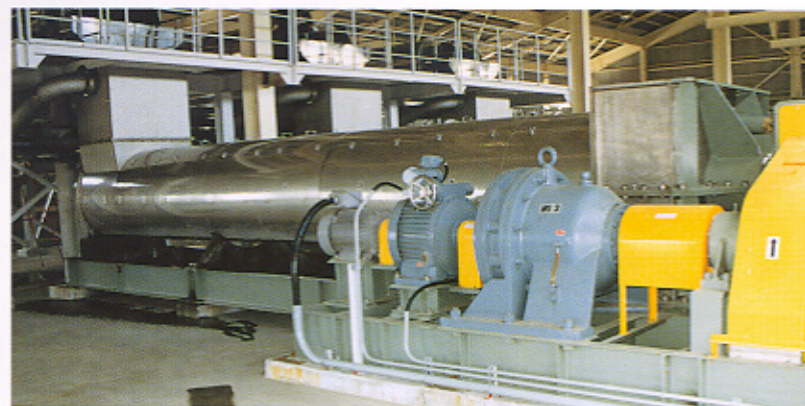
- Primary Sludge
- Secondary Sludge
- Tertiary Sludge
- Deink Sludge
- Alum Sludge
- Debarking Sludge
- Coating Sludge
- Blended Sludge



FKC Sludge Screw Press with High Consistency Rotary Screen Thickener (HC-RST)

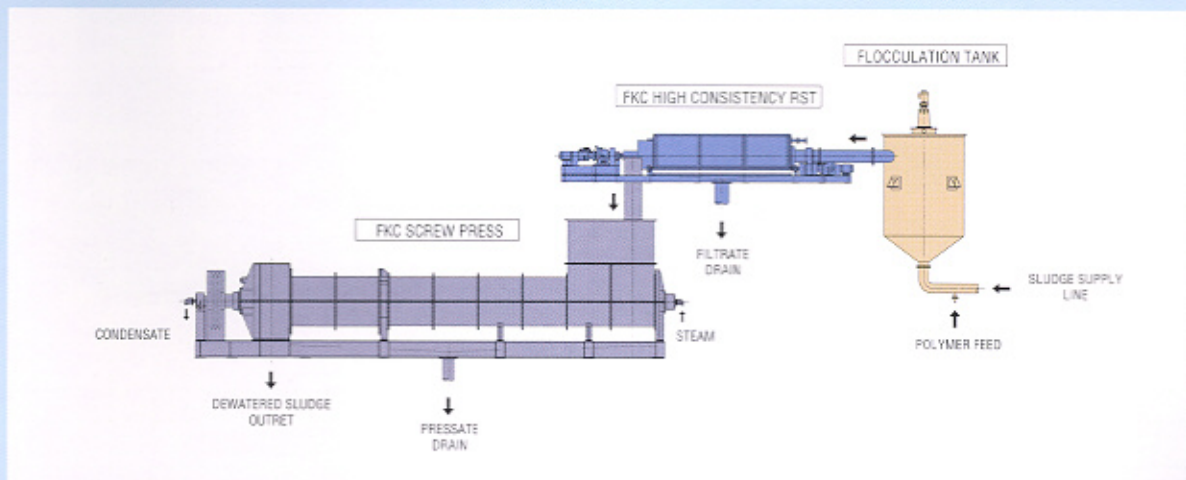
FKC has extensive experience with all types of pulp and paper mill sludge. Even low, or no fiber sludges such as secondary sludge can be effectively dewatered with a FKC equipment. Each FKC screw press is custom designed to meet our customer's unique sludge and performance requirements.

In most sludge dewatering applications a rotary screen thickener (RST) is used prior to the screw press to prethicken the sludge. FKC manufactures a complete line of two types of rotary screen thickeners. A comparative case study of the conventional vs. high consistency (HC) model RST is summarized on the following page. RSTs stabilize screw press inlet consistency and reduce inlet volume thereby increasing screw press capacity. RSTs are also used in stand alone thickening applications.



FKC Sludge Screw Press with Rotary Screen Thickener (RST)

Process Flow Diagram



A typical FKC sludge dewatering system utilizes a flocculation tank, rotary screen thickener, and screw press. Sludge is fed to the system from a sludge blend tank or clarifier. Polymer, when required, is added to the sludge just prior to the flocculation tank. From the flocculation tank the conditioned sludge flows by gravity into the high consistency rotary screen thickener (HC-RST) where the dewatering process begins. The thickened sludge is gravity fed from the HC-RST into the screw press where final dewatering occurs.

**Pulp & Paper Mixed Primary &
Secondary Sludge Dewatering**

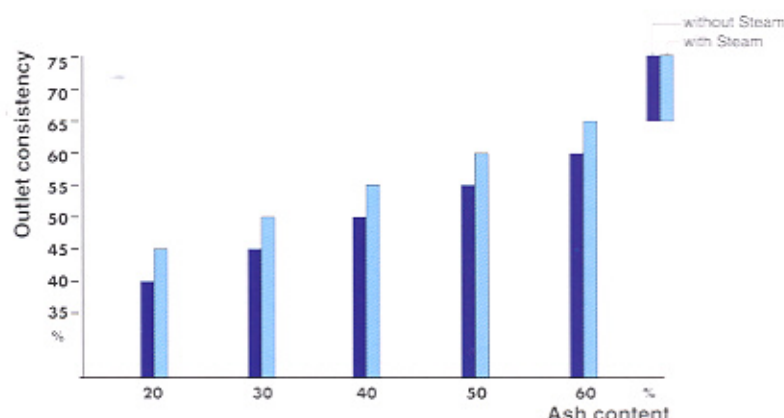
| Model | Capacity (BMD/24hours) |
|----------|---------------------------|
| SHX-500 | 9-18 |
| SHX-550 | 11-21 |
| SHX-600 | 13-25 |
| SHX-700 | 17-34 |
| SHX-800 | 23-45 |
| SHX-850 | 26-52 |
| SHX-900 | 29-58 |
| SHX-1000 | 34-69 |
| SHX-1050 | 38-76 |
| SHX-1100 | 43-86 |
| SHX-1200 | 50-100 |
| SHX-1250 | 55-110 |

*The above assumes use of prethickening equipment prior to the screw press.

*Capacity will vary depending on ash content, fiber content, mix ratio, and other sludge characteristics.

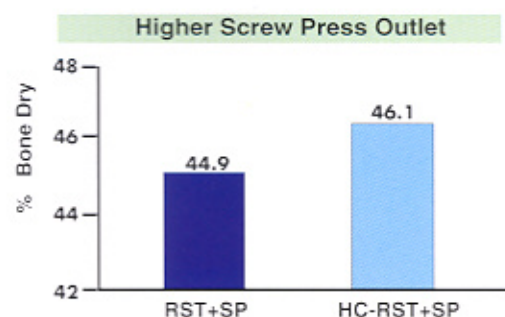
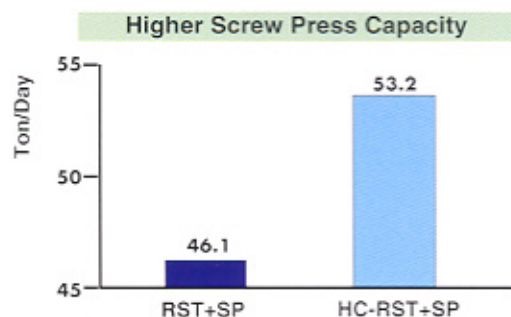
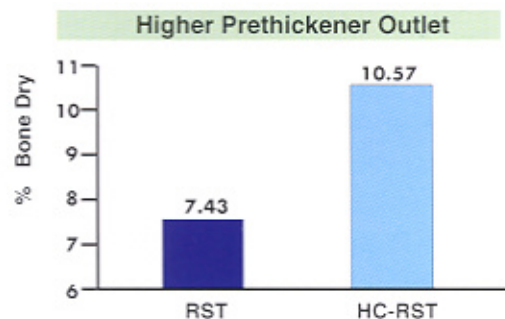
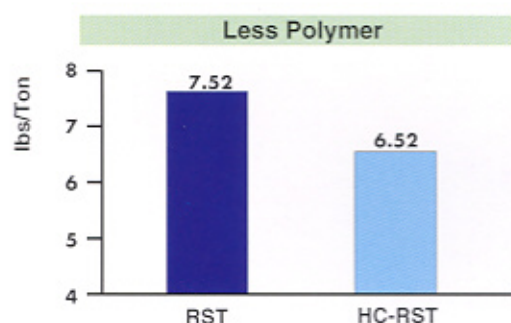
*Bigger size (capacity) model than above is available, depending on the requirement.

Outlet consistency vs. Ash content



Case Study

Rotary Screen Thickener vs. High Consistency Rotary Screen Thickener



RST : Rotary Screen Thickener Model RST-W630×3000L
 HC-RST : High Consistency RST Model HC-RST W630D×3000L
 SP : FKC Screw Press Model SHX-1000×8000L

Sludge : 80% Primary : 20% Secondary DIP Sludge
 Fiber content : 8-10%
 Ash content : 35-38%

FUKOKU KOGYO CO., LTD.

● JAPAN

Tokyo Head Office :
 14-12 Kosuge 3-chome, Katsushika-ku, Tokyo, 124-0001 Japan
 Tel:(03)3604-9251 Fax:(03)3604-9255
 E-mail:fkctyo@orange.or.jp

Ishinomaki Factory :
 1-37 Fudo-cho 2-chome, Ishinomaki-shi, Miyagi-ken, 986-0017 Japan
 Tel:(0225)95-6811 Fax:(0225)95-6812
 E-mail:fkciw@fsinet.or.jp

Kushiro Factory :
 3-24 Hoshigaura Minami 3-chome, Kushiro-shi, 084-0913 Japan
 Tel:(0154)52-3191 Fax:(0154)52-3193
 E-mail:fkcksh@marimo.or.jp

Osaka Branch :
 2-13 Tagawakita 2-chome, Yodogawa-ku, Osaka, 532-0021 Japan
 Tel:(06)6301-4626 Fax:(06)6300-1407

Fuji Branch :
 54 Tuda, Fuji-shi, Shizuoka-ken, 417-0034 Japan
 Tel:(0545)53-0325 Fax:(0545)53-0326

● USA

FKC Co., Ltd.
 2708 West 18th Street, Port Angeles, WA 98363, USA
 Tel:(360)452-9472 Fax:(360)452-8880
 E-mail:fkco@tenforward.com

● EUROPE

FKC European Representative Office
 Am Huegel 9, 82319 Starnberg, Germany
 Tel:(08151)911680 Fax:(08151)911681