

RD-A444-27A-0-0

ROLL DATA

TYPE OF ROLL: SUCT. COUCH
 LOCATION: COUCH
 ROLL SYMBOL: 27-2610-0001
 ROLL WT: 14,000
 (SEE WEIGHT PLATE ON ROLL FOR ACTUAL ROLL WEIGHT)
 MAX. ALLOW NIP _____
 OPERATING NIP _____
 CURVE _____

REF. INFO

ASSY. DWG. 6-A444-2-0
 LIC: LC-A444-27A-0-0
 TYPE OF PA: BOX BOARD
 WEIGHT: _____
 MACH. SPEED: 1000 FPM
 WIRE WIDTH: 168.

ITEM	QUAN.	DESCRIPTION	SYMBOL	MATERIAL
1	REF	SHELL 30 OD X 27.5 ID X 182 LG SHELL SERIAL NO SC1238RC SHELL DRILLING PAT 1-77-1306 SHELL MACH INSTR 2-21-700 SHELL DUBBING 1-77-3734 BAL INSTR TYPE B 1-77-705-0-10	P3-13275-4-80	SSM
2	REF	RUBBER COVER 31 OD X 30 ID X 182 LG 170 DRILL FACE X .5 THK PLASTOMETER 0 TO 5 P/J COVERED BY STOWE-WOODWARD BAL AT 1000 FPM GROUP NO B		
3	REF	CROWN SHEET	1-77-2000-0-5	
4	REF	SUCTION COUCH ROLL	27-2610-0001	

CROWNING INSTRUCTIONS

RECOMM. CROWN .002 / .003
 RECOMM. BY _____
 APP'D. CROWN _____
 APP'D. BY _____

BALANCING INSTRUCTIONS

BALANCE AT 1000 F.P.M.
 GROUP NO. _____ PER _____
 BELOIT CORP. BAL. STDS. "SECT.3-BAL"

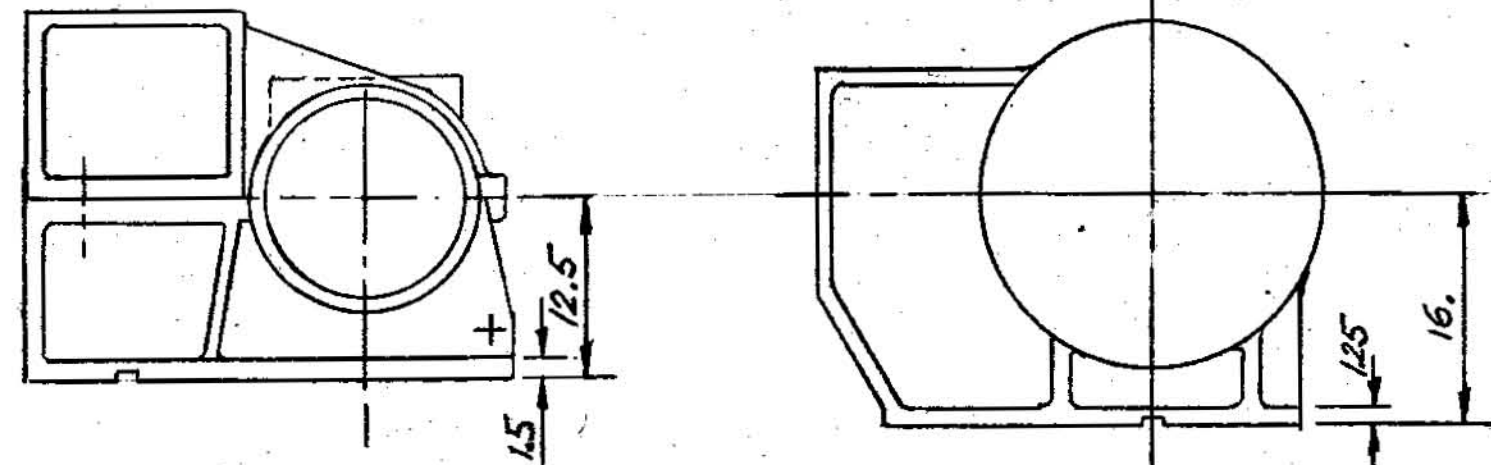
SPECIAL INSTRUCTIONS OR DATA

NOTE: LC-A444-27A-0-0 (ORD # 68040 / 1977) &
 MH-1072-A444 (1973) MAKE (1) COMPLETE ROLL.

WATER CONSUMPTION:
 FOG SHOWER: 7.1 GPM @ 20 PSI (CONTINUOUS OPERATION)
 CLEAN SHOWER: 122 GPM @ 40 PSI (INTERMITTENT OPERATION)

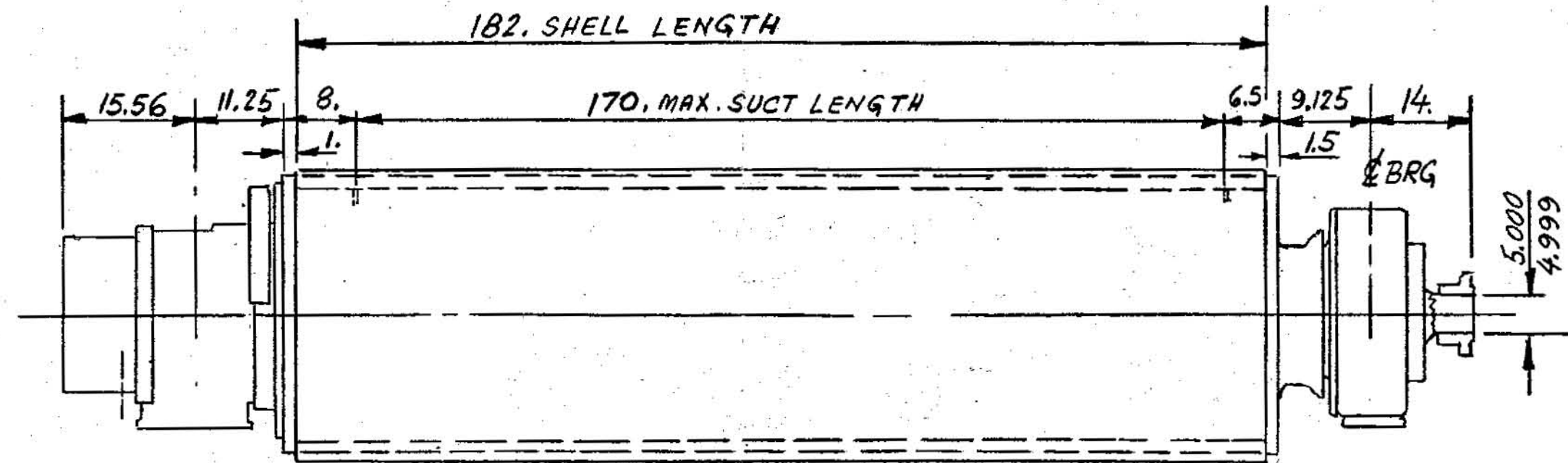
ROLL GRINDER DATA

FR. BRG. ASSY. 27-7112-0001 BK. BRG. ASSY. MZ3-SC-91
 BRG. CATALOG NO. TORR 360SD30-F3-W33-W74 BRG. CAT. NO. TORR 360SD30-F3-W33
 BACK INTERNAL BRG. CAT. NO. = TORR 130SD23-F4-W33



FR SADDLE & SDL. CAP

BK. BRG HOUSING



THIS PRINT IS THE PROPERTY OF BELOIT CORPORATION, THE INFORMATION THEREON IS SUBMITTED IN CONFIDENCE

ORDER NO.	68040	CUSTOMER NAME	FEDERAL PA. BOARD	MACH. NO.	1	BELOIT CORPORATION BELOIT, WISCONSIN, U.S.A. 53511	
FILE NO.		MILL	VERSAILLES, CONN.			REFERENCE DRAWING	
DEPT. NO.	635	DRAWN	JBS	CHK'D	PWM	APP'D. 1	APP'D. 2
DATE	2/7/77	TITLE	3IRC SUCTION COUCH ROLL DATA SHEET			SHEET	OF
							LC-A444-27A-0-0
							RD-A444-27A-0-0

1E-2-18-77

ORIGINAL