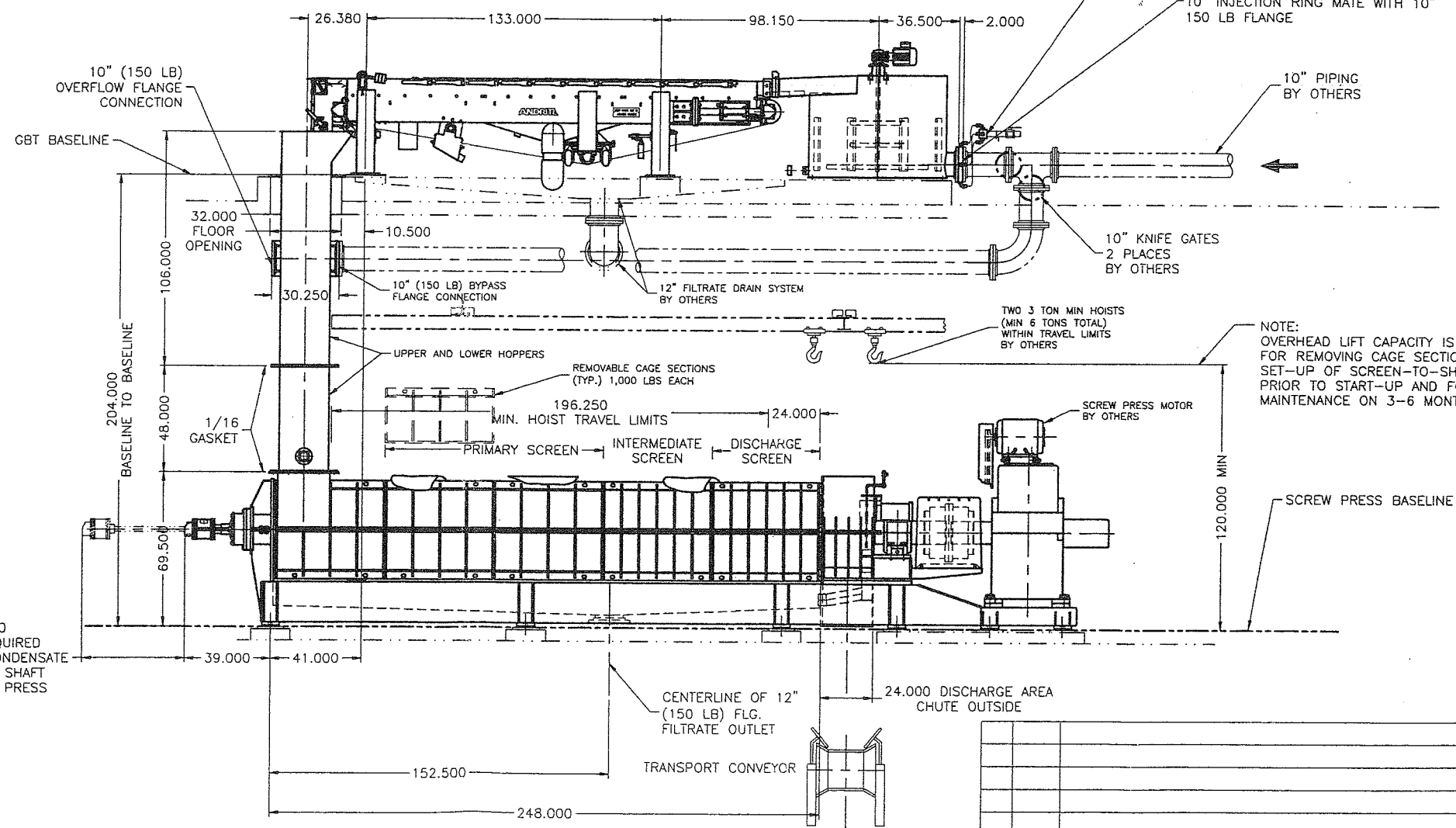
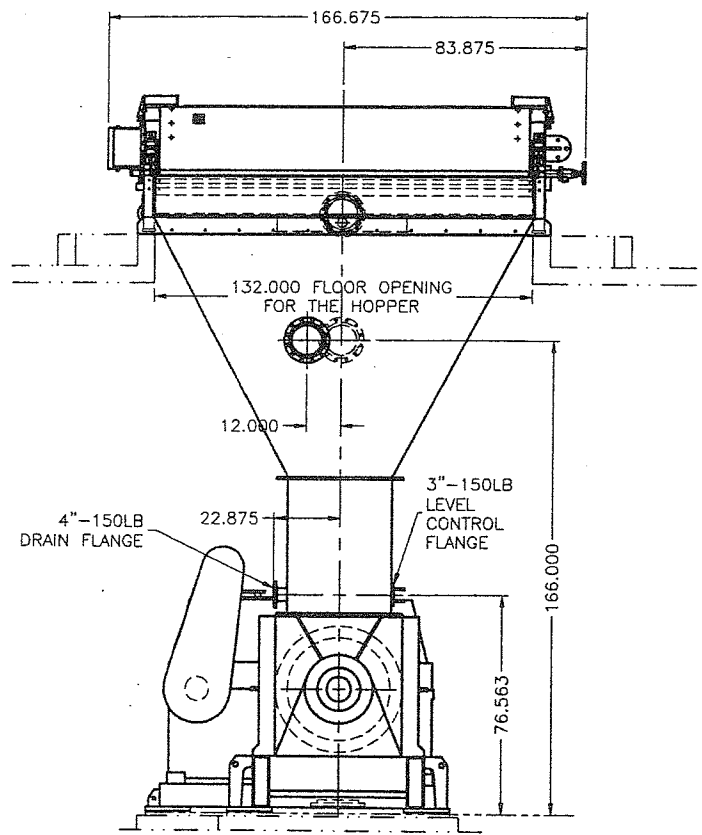
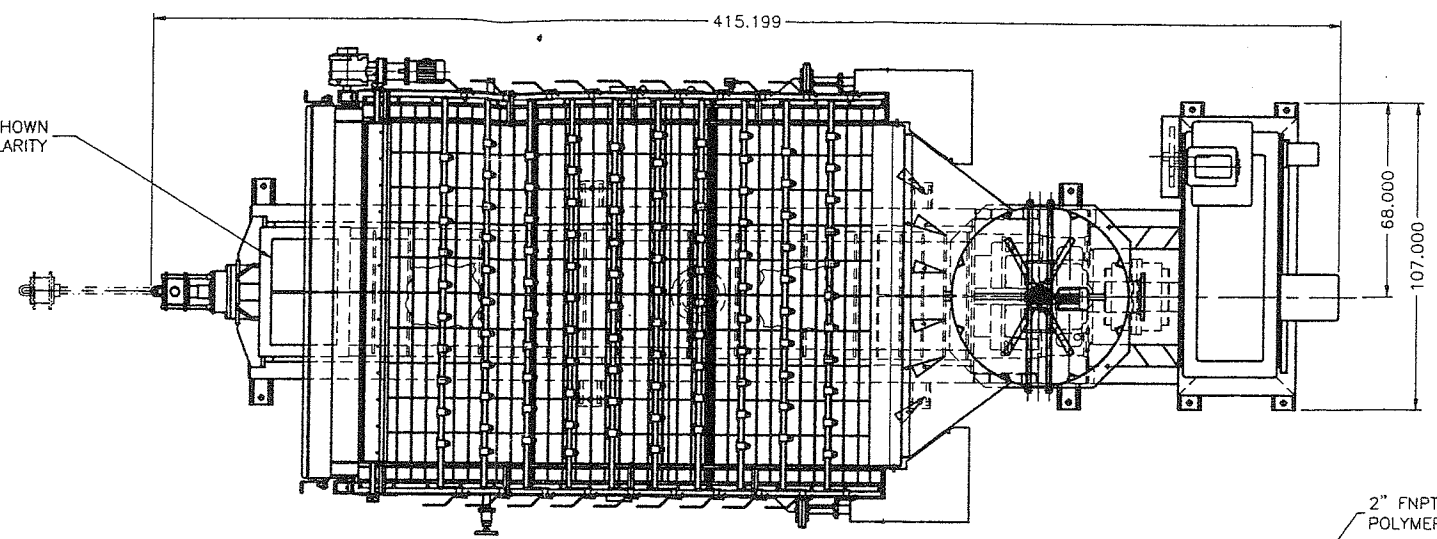


8 7 6 5 4 3 2 1

FEED HOPPER IS NOT SHOWN
IN THIS VIEW FOR CLARITY



2" FNPT CONNECTION
POLYMER INJECTION

10" FLANGE ON RETENTION TANK &
10" INJECTION RING MATE WITH 10"
150 LB FLANGE

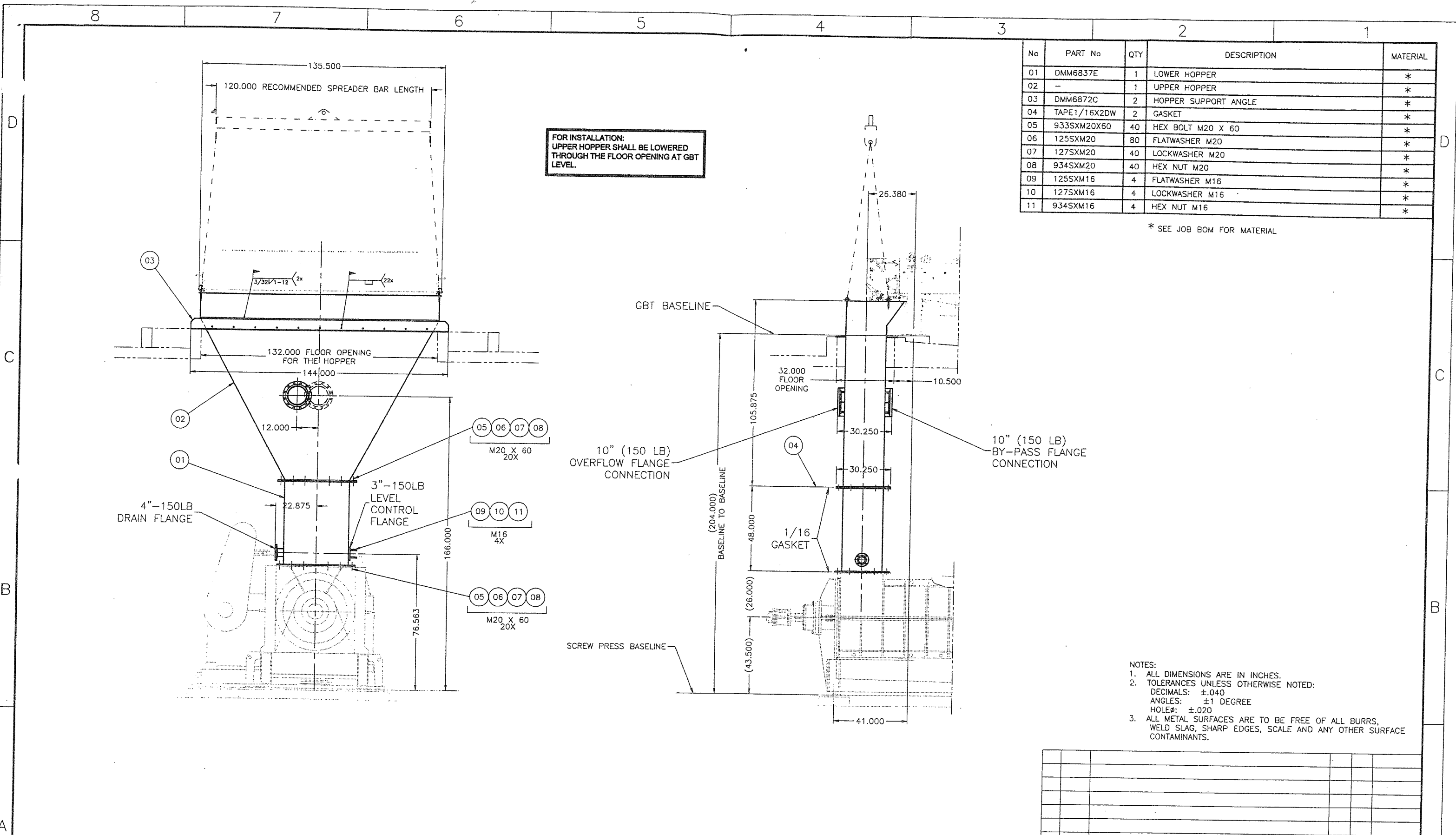
NOTE:
OVERHEAD LIFT CAPACITY IS REQUIRED
FOR REMOVING CAGE SECTIONS FOR
SET-UP OF SCREEN-TO-SHAFT CLEARANCE
PRIOR TO START-UP AND FOR ROUTINE
MAINTENANCE ON 3-6 MONTH INTERVALS.

NOTES:
1. SEE FLOW DIAGRAM FOR MINIMUM DISTANCE THAT
THE VENTURI MIXER NEEDS TO BE UPSTREAM FROM
THE RETENTION TANK.

THIS DRAWING IS COPY RIGHTED
FOR THE PERSONAL USE OF THE RECEIVER
WITHOUT THE WRITTEN CONSENT OF ANDRITZ-
RUTHNER, INC. IT MUST NOT BE COPIED, REPRODUCED,
OR MADE ACCESSIBLE TO THIRD PARTIES. ANY LEGAL
USE BY THE RECEIVER OR THIRD PARTIES FOR WHICH HE IS RESPONSIBLE CAN
CONSTITUTE A VIOLATION OF FEDERAL AND STATE LAWS. THIS DRAWING MUST BE RETURNED ON
REQUEST OF THE COMPANY.

GARDEN STATE PAPER GARFIELD, NJ P.O. 00-27930 ANDRITZ JOB # 612-998		ESTIMATED WEIGHT IN LBS: UNLESS OTHERWISE SPECIFIED: DIMENSIONS ARE IN INCHES FABRICATION TOLERANCES .XXX±.040 ANGLE 1° HOLE±.020 MACHINING TOLERANCES .XXX±.005 ANGLE 5° HOLE±.020 MILL FINISH ALL OVER	DRAWN BY: TAT CHECKED BY: DATE APPROVED BY: DATE THIRD ANGLE PROJECTION	DATE 01-21-00 DATE DATE	<p>ANDRITZ-RUTHNER, INC. 1010 COMMERCIAL BLVD. SOUTH ARLINGTON, TEXAS 76001 PHONE: (817) 465-5611</p>	TITLE 3.0 GBT VA / 3620C SCREW PRESS MACHINE ARRANGEMENT	SIZE D	DRAWING NUMBER M998LAY	REV 0
		REVISION		BY	APVD	DATE	SCALE 1/32	FILE M998LAY	SHEET 1 OF 1

8 7 6 5 4 3 2 1



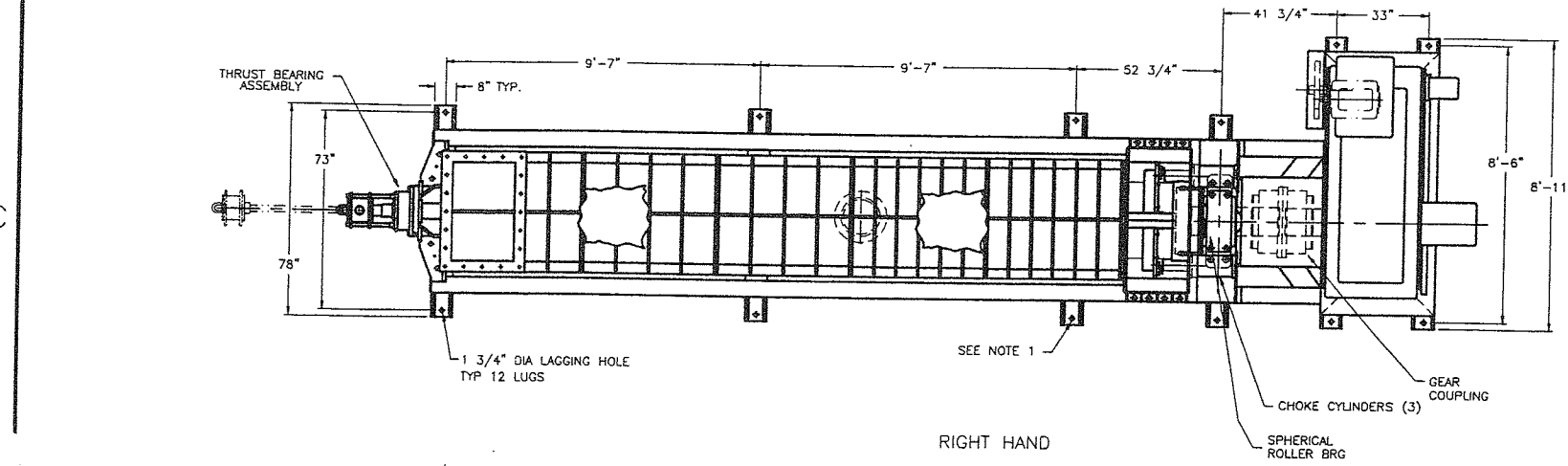
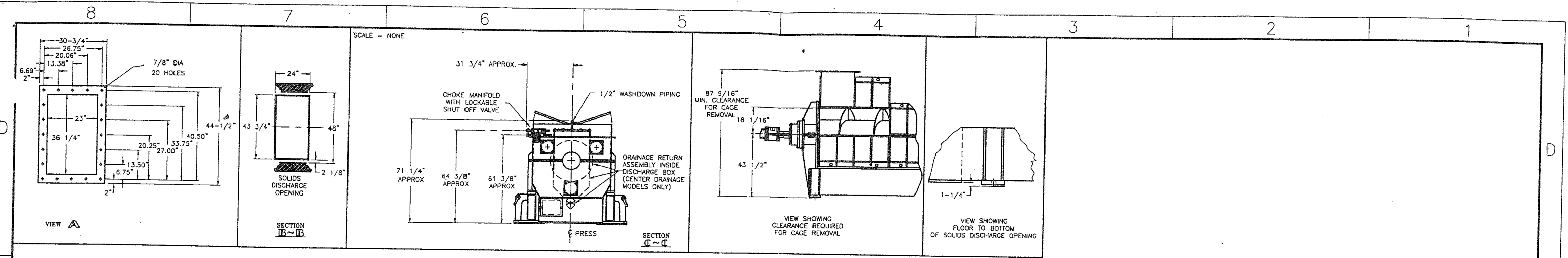
No	PART No	QTY	DESCRIPTION	MATERIAL
01	DMM6837E	1	LOWER HOPPER	*
02	-	1	UPPER HOPPER	*
03	DMM6872C	2	HOPPER SUPPORT ANGLE	*
04	TAPE1/16X2DW	2	GASKET	*
05	933SXM20X60	40	HEX BOLT M20 X 60	*
06	125SXM20	80	FLATWASHER M20	*
07	127SXM20	40	LOCKWASHER M20	*
08	934SXM20	40	HEX NUT M20	*
09	125SXM16	4	FLATWASHER M16	*
10	127SXM16	4	LOCKWASHER M16	*
11	934SXM16	4	HEX NUT M16	*

* SEE JOB BOM FOR MATERIAL

- NOTES:
1. ALL DIMENSIONS ARE IN INCHES.
 2. TOLERANCES UNLESS OTHERWISE NOTED:
DECIMALS: ±.040
ANGLES: ±1 DEGREE
HOLEØ: ±.020
 3. ALL METAL SURFACES ARE TO BE FREE OF ALL BURRS, WELD SLAG, SHARP EDGES, SCALE AND ANY OTHER SURFACE CONTAMINANTS.

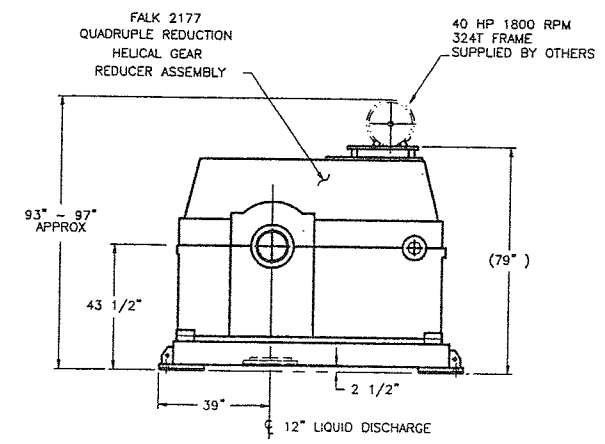
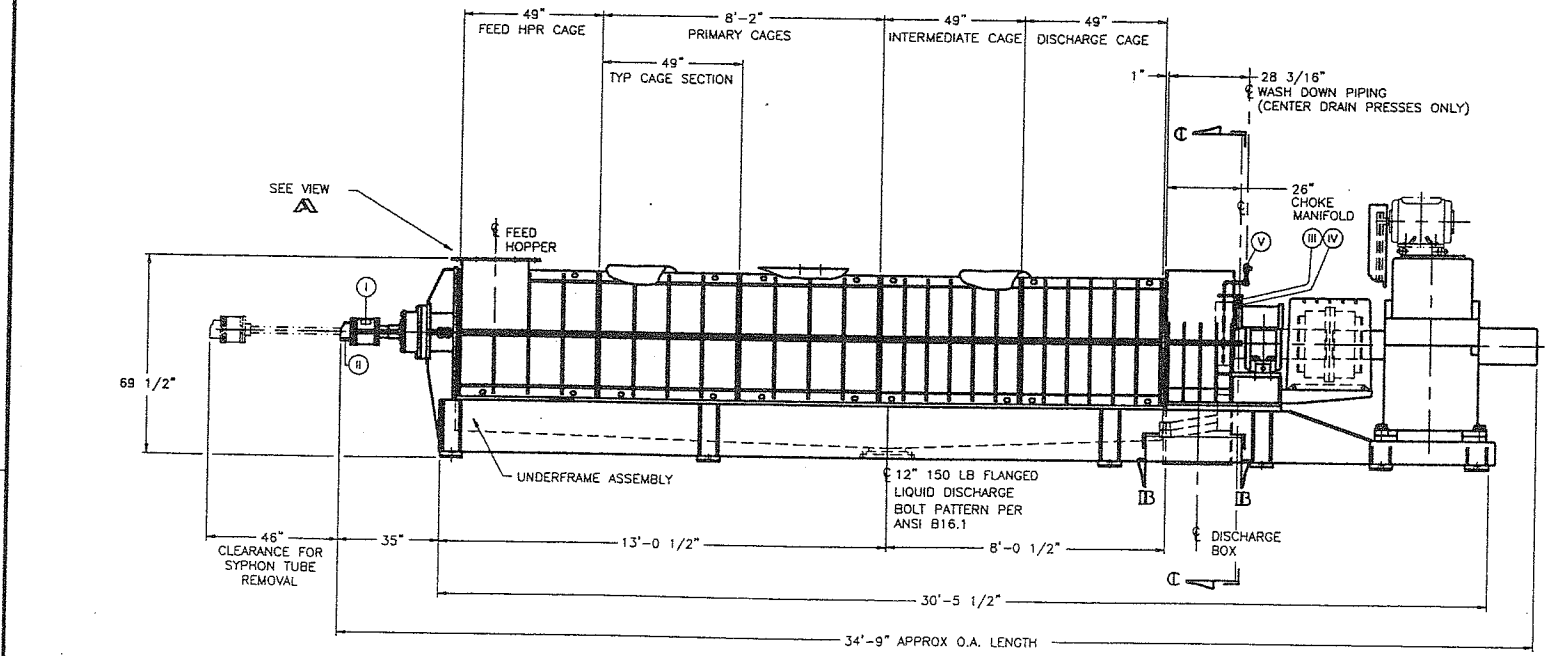
THIS DRAWING IS COPY RIGHTED
FOR HIS PERSONAL USE, WITHOUT THE WRITTEN CONSENT OF ANDRITZ-
RUTHNER, INC., IT MUST NOT BE COPIED NOR MADE AVAILABLE TO THIRD PARTIES.
INCLUDING COMPETITORS, NOR MADE ACCESSIBLE TO SUCH PARTIES. ANY ILLEGAL
USE BY THE RECEIVER OR THIRD PARTIES FOR WHICH HE IS RESPONSIBLE CAN
CONSTITUTE A CAUSE FOR LEGAL ACTION. THIS DRAWING MUST BE RETURNED ON
REQUEST OF THE COMPANY.

GARDEN STATE PAPER GARFIELD, NJ P.O. 00-27930 ANDRITZ JOB # 612-998		ESTIMATED WEIGHT IN LBS:	DRAWN BY: TAT	DATE 01-26-00	<p>ANDRITZ-RUTHNER, INC. 1010 COMMERCIAL BLVD, SOUTH ARLINGTON, TEXAS 76001 PHONE: (817) 465-5611</p>	TITLE 3.0m GBT-VA / 3620C SCREW PRESS FEED HOPPER ASSEMBLY	
UNLESS OTHERWISE SPECIFIED: DIMENSIONS ARE IN INCHES		CHECKED BY:	DATE	SIZE D		DRAWING NUMBER M998FHP	REV 0
FABRICATION TOLERANCES .XXX±.040 ANG±1° HOLE±.020		APPROVED BY:	DATE	SCALE 1/2=1'		FILE M998FHP	SHEET 1 OF 1
MACHINING TOLERANCES .XXX±.005 ANG±.5° HOLE±.020		THIRD ANGLE PROJECTION					
MILL FINISH ALL OVER							



PORT	SIZE	DESCRIPTION	CONSUMPTION
I	3" NPTF	STEAM INLET	850 LB/HR @ 65 PSIG
II	1.5" NPTF	CONDENSATE OUTLET	2 GPM
III	3/4" NPTF	CHOKE "IN" PORT	40 SCFM (100 PSI) @ START-UP
IV	3/4" NPTF	CHOKE "OUT" PORT	-
V	1/2" NPTF	WASHDOWN PIPING	10 GPM @ 20 PSIG

- NOTE!
- UNIT SUPPLIED WITH (4) SCREW TYPE ANCHOR SHACKLES FOR RIGGING. 9 1/2 TON RATING EACH.
 - THE TOTAL WEIGHT OF FEED CHUTE AND MATERIAL BEING PROCESSED THAT IS ADDED TO THE TOP OF THE FEED HOPPER IS TO BE 4,100 LBS MAX.



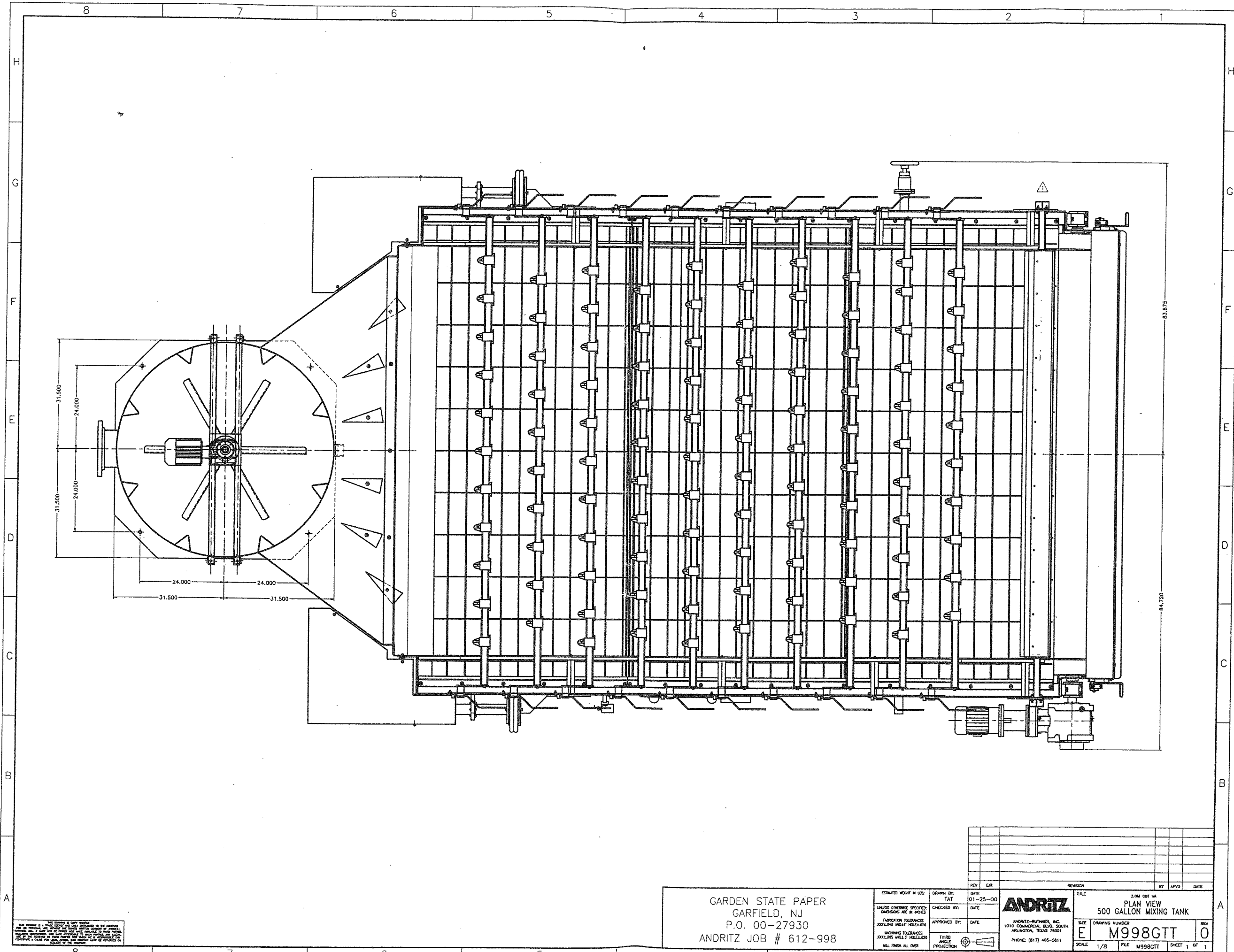
THIS DRAWING IS A TRADE SECRET AND ONLY ENTRUSTED TO THE RECEIVER FOR HIS PERSONAL USE. WITHOUT THE WRITTEN CONSENT OF ANDRITZ-RUTHNER, INC. IT MUST NOT BE COPIED, REPRODUCED, OR MADE AVAILABLE TO THIRD PARTIES, INCLUDING COMPETITORS, NOR MADE ACCESSIBLE TO SUCH PARTIES. ANY UNLAWFUL USE OF THIS DRAWING OR THIRD PARTIES FOR WHICH HE IS RESPONSIBLE CAN CONSTITUTE A CAUSE FOR LEGAL ACTION. THIS DRAWING MUST BE RETURNED ON REQUEST OF THE COMPANY.

GARDEN STATE PAPER
GARFIELD, NJ
P.O. 00-27930
ANDRITZ JOB # 612-998

ESTIMATED WEIGHT IN LBS:	DRAWN BY: ELI	DATE: 06-21-96
UNLESS OTHERWISE SPECIFIED: DIMENSIONS ARE IN INCHES	CHECKED BY:	DATE:
FABRICATION TOLERANCES: .XXX±.040 ANG±.1° HOLE±.020	APPROVED BY: JX	DATE: 01-26-00
MACHINING TOLERANCES: .XXX±.005 ANG±.5° HOLE±.020	THIRD ANGLE PROJECTION	
MILL FINISH ALL OVER		

ANDRITZ
ANDRITZ-RUTHNER, INC.
1010 COMMERCIAL BLDG. SOUTH ARLINGTON, TEXAS 76001
PHONE: (817) 465-5611

TITLE	3620C W/ FALK REDUCER	
	RH SCREW PRESS	
SIZE	DRAWING NUMBER	REV
D	M998SPR	0
SCALE	FILE	SHEET
1/32	M998SPR	1 OF 1



ALL DIMENSIONS ARE IN UNLESS OTHERWISE SPECIFIED DIMENSIONS ARE IN INCHES
 FABRICATION TOLERANCES
 WORKING TOLERANCES
 WILL FINISH ALL OVER

GARDEN STATE PAPER
 GARFIELD, NJ
 P.O. 00-27930
 ANDRITZ JOB # 612-998

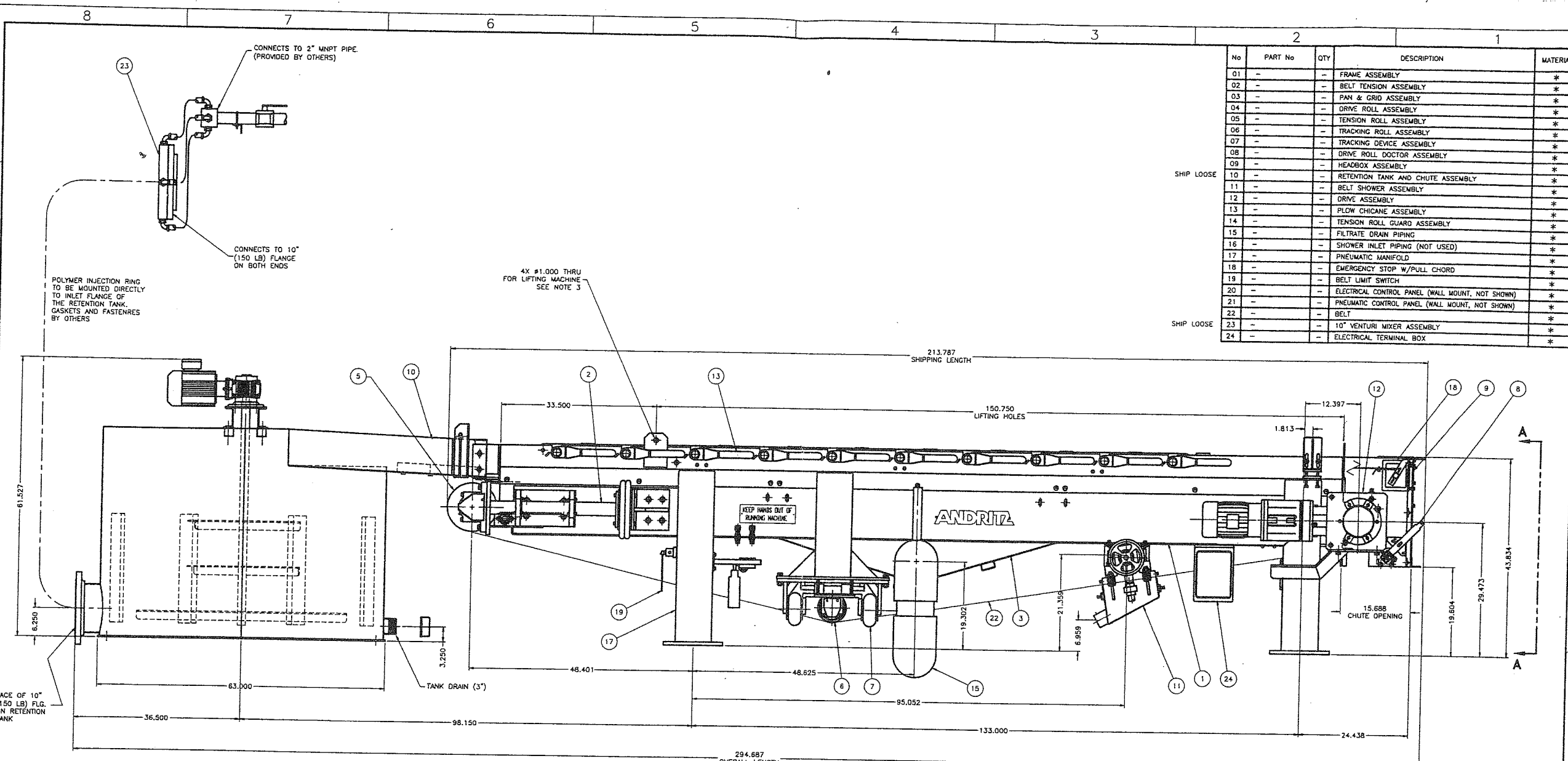
ESTIMATED WEIGHT IN LBS:
 UNLESS OTHERWISE SPECIFIED DIMENSIONS ARE IN INCHES
 FABRICATION TOLERANCES
 WORKING TOLERANCES
 WILL FINISH ALL OVER

DRAWN BY: TAT
 CHECKED BY:
 APPROVED BY:
 DATE: 01-25-00
 DATE:
 DATE:
 THIRD ANGLE PROJECTION

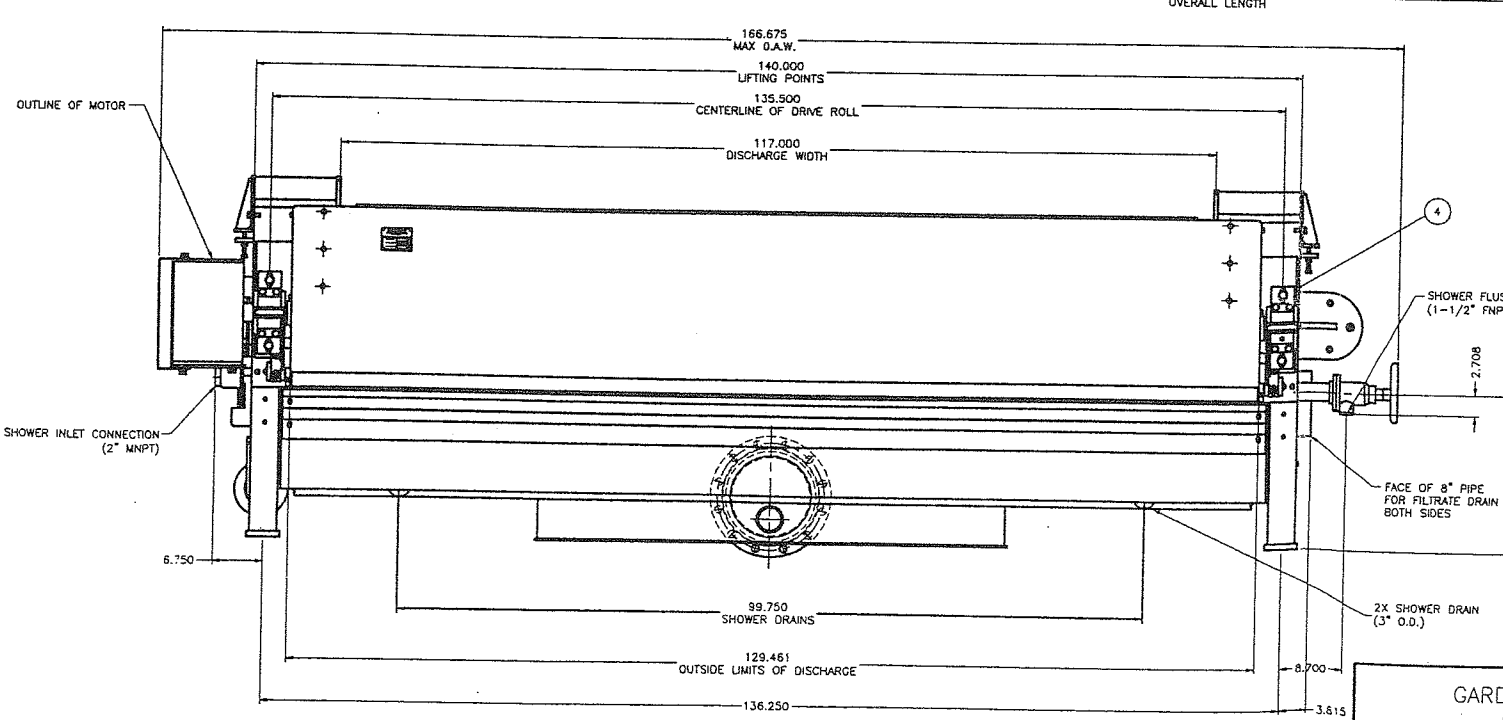
ANDRITZ
 ANDRITZ-MULTIMIX, INC.
 1010 COMMERCIAL BLVD., SOUTH
 ARLINGTON, TEXAS 76001
 PHONE: (817) 465-5811

REV	BY	DATE	REVISION

TITLE: 5.041 GBT 14
 PLAN VIEW
 500 GALLON MIXING TANK
 SIZE: E
 DRAWING NUMBER: M998GTT
 SCALE: 1/8
 FILE: M998GTT
 SHEET 1 OF 1



No	PART No	QTY	DESCRIPTION	MATERIAL
01	-	-	FRAME ASSEMBLY	*
02	-	-	BELT TENSION ASSEMBLY	*
03	-	-	PAN & GRID ASSEMBLY	*
04	-	-	DRIVE ROLL ASSEMBLY	*
05	-	-	TENSION ROLL ASSEMBLY	*
06	-	-	TRACKING ROLL ASSEMBLY	*
07	-	-	TRACKING DEVICE ASSEMBLY	*
08	-	-	DRIVE ROLL DOCTOR ASSEMBLY	*
09	-	-	HEADBOX ASSEMBLY	*
10	-	-	RETENTION TANK AND CHUTE ASSEMBLY	*
11	-	-	BELT SHOWER ASSEMBLY	*
12	-	-	DRIVE ASSEMBLY	*
13	-	-	FLOW CHICANE ASSEMBLY	*
14	-	-	TENSION ROLL GUARD ASSEMBLY	*
15	-	-	FILTRATE DRAIN PIPING	*
16	-	-	SHOWER INLET PIPING (NOT USED)	*
17	-	-	PNEUMATIC MANIFOLD	*
18	-	-	EMERGENCY STOP W/PULL CHORD	*
19	-	-	BELT LIMIT SWITCH	*
20	-	-	ELECTRICAL CONTROL PANEL (WALL MOUNT, NOT SHOWN)	*
21	-	-	PNEUMATIC CONTROL PANEL (WALL MOUNT, NOT SHOWN)	*
22	-	-	BELT	*
23	-	-	10" VENTURI MIXER ASSEMBLY	*
24	-	-	ELECTRICAL TERMINAL BOX	*

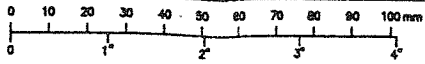


- NOTES:
1. ALL DIMENSIONS ARE IN INCHES.
 2. RIGHT HAND MACHINE - AS SHOWN
LEFT HAND MACHINE - MIRROR IMAGE
 3. USE SPREADER BAR WHEN LIFTING MACHINE.

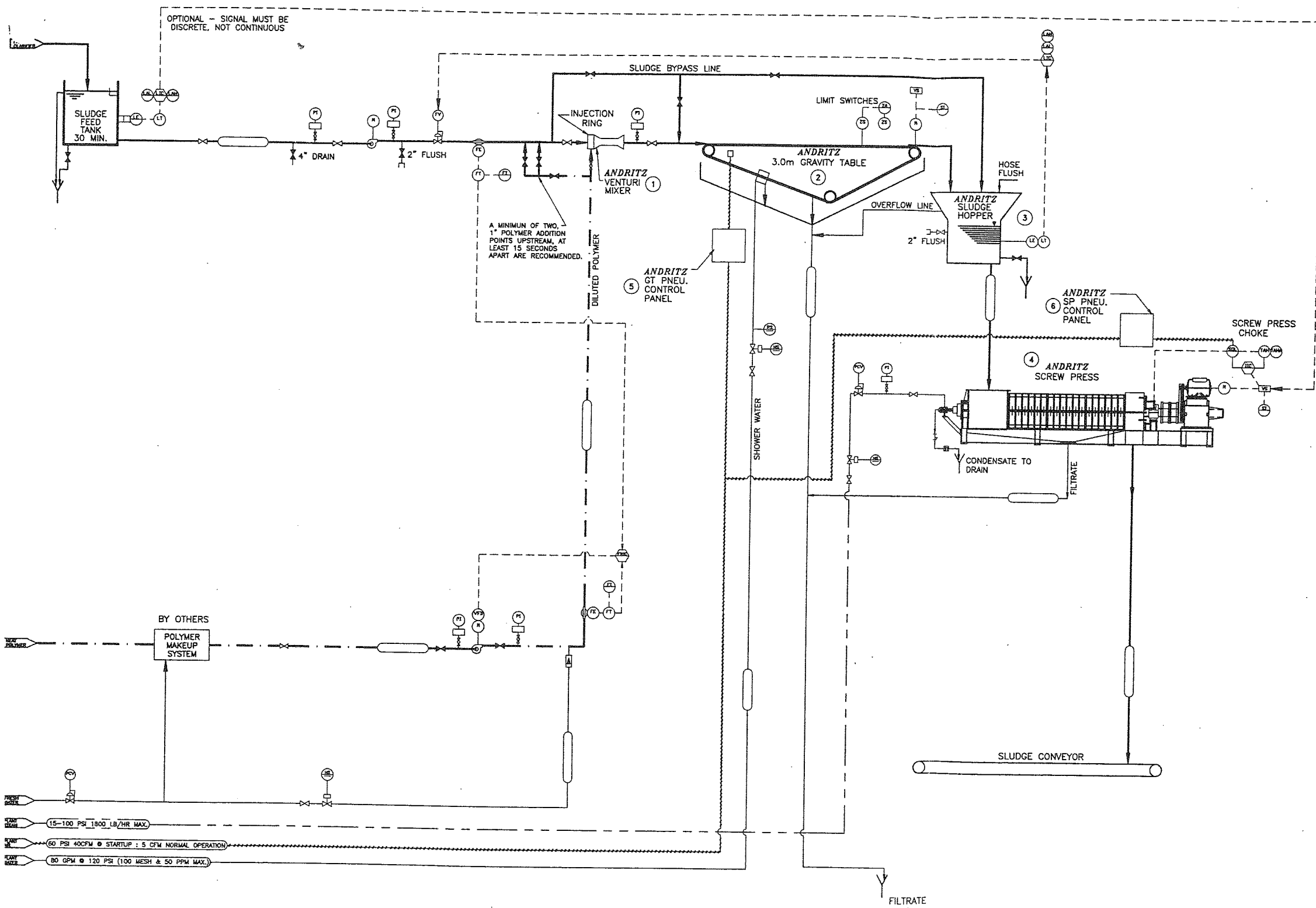
GARDEN STATE PAPER
GARFIELD, NJ
P.O. 00-27930
ANDRITZ JOB # 612-998

ESTIMATED WEIGHT IN USE	DRAWN BY: TAT	DATE: 01-26-00	ANDRITZ	TITLE: 3.0M GRT W/ MACHINE ASSY WITH RETENTION TANK
UNLESS OTHERWISE SPECIFIED DIMENSIONS ARE IN INCHES	CHECKED BY:	DATE:		SIZE: E
FABRICATION TOLERANCES UNLESS OTHERWISE SPECIFIED ARE AS FOLLOWS: MILL FINISH ALL OVER	APPROVED BY:	DATE:	THIRD ANGLE PROJECTION	SCALE: 1/8" = 1"
			ANDRITZ-BLUMHARDT, INC. 1010 COMMERCIAL BLVD. SOUTH ARLINGTON, TEXAS 76010 PHONE (817) 465-5611	REV: 10

SHEET 1 OF 1



CONTROL PHILOSOPHY:
 HOPPER LEVEL CONTROLS INLET FLOW TO
ANDRITZ SLUDGE DEWATERING SYSTEM.
 POLYMER & POST DILUTION ADDED
 AS A RATIO TO SLUDGE FLOW.



LEGEND

- (LA) - LOW LEVEL ALARM
- (HA) - HIGH LEVEL ALARM
- (HHA) - HIGH HIGH LEVEL ALARM
- (LT) - LEVEL TRANSMITTER
- (LE) - LEVEL ELEMENT
- (LS) - LIMIT SWITCH
- (LIC) - LEVEL INDICATING CONTROLLER
- (CM) - CONSISTENCY METER
- (M) - MOTOR
- (PI) - PRESSURE INDICATOR
- (FE) - FLOW ELEMENT
- (FT) - FLOW TRANSMITTER
- (FIP) - FLOW INDICATOR PANEL MOUNTED
- (FIC) - FLOW INDICATING CONTROLLER PANEL MOUNTED
- (FCV) - FLOW CONTROL VALVE
- (HSA) - HAND OFF AUTO SELECTOR SWITCH
- (EESV) - ELECTRICALLY OPERATED SOLENOID VALVE (ALSO (ESV))
- (FRIC) - FLOW RATIO INDICATING CONTROLLER
- (ST) - STEAM TRAP
- (PNSV) - PNEUMATIC-CONTROLLING SOLENOID VALVE
- (HTA) - HIGH TORQUE ALARM (SET POINT 1)
- (HHA) - HIGH HIGH TORQUE ALARM (SET POINT 2)
- (CIC) - CURRENT INDICATING CONTROLLER FOR AUTO CHOKE
- (SIP) - SPEED INDICATOR PANEL MOUNTED
- (BTL) - BELT TRACKING LIMIT SWITCH (ANDRITZ SUPPLY W/ GRAVITY TABLE)
- (PCV) - PRESSURE CONTROL VALVE
- (CV) - CHECK VALVE
- (DM) - DENSITY (CONSISTENCY) METER
- (PDA) - PNEUMATIC DIAPHRAGM ACTUATOR WITH SOLENOID VALVE FAIL OPEN
- (MA) - MOTOR ACTUATOR
- (BV) - BALL VALVE
- (SSV) - SINGLE SEATED VALVE
- (SV) - SOLENOID VALVE
- (SAV) - SAFETY VALVE
- (NC) - NORMALLY CLOSED
- (NO) - NORMALLY OPEN
- (D) - DRAIN
- (RFI) - ROTAMETER FLOW INDICATOR
- (VSD) - VARIABLE SPEED DRIVE
- (SM) - STATIC MIXER
- (FE) - FLOW ELEMENT

DESIGN CRITERIA:

- A) SLUDGE TYPE NEWSPRINT DEINK
- B) BLEND 100% PRIMARY
- C) FLOW RATE 250 GPM
- D) SOLIDS CONTENT 3.0% TS
- E) THROUGHPUT 45 BDSTPD
- F) ASH CONTENT EST. 15-25%
- G) DESIRED SOLIDS 48-50% TS

EQUIPMENT LAYOUT & PERFORMANCE

- A) # OF UNITS. 1 (ONE) 3.0m GT
- 1 (ONE) SP
- B) DRYNESS 48-50% TS
- C) SOLIDS CAPTURE 95%
- D) POLYMER CONSUMPTION 2-3 LBS/TON
- E) STEAM CONSUMPTION NOT REQUIRED BUT IF USED IT WILL ADD 1-2% TS.

NOTES:

- 1) FLOW INDEX: THROUGHPUT BDSTPD / CONSISTENCY % / FLOW US GPM.
- 2) POLYMER FLOWS BASED ON EMULSION TYPE POLYMER AT ESTIMATED CONSUMPTION OF 5 LBS/TON T.S. MAXIMUM.
- 3) MAXIMUM PRESSURE DROP ACROSS VENTURI MIXER ESTIMATED AT 12-15 PSI.
- 4) P & ID BASED ON AUTOMATIC OPERATION.
- 5) ALL INSTRUMENTATION, PUMPS, VALVES, ETC TO BE SUPPLIED BY OTHERS.

ANDRITZ SCOPE OF SUPPLY:

- 1) VENTURI MIXER
- 2) 1.0m GRAVITY TABLE
- 3) SLUDGE FEED HOPPER
- 4) 3616C SCREW PRESS
- 5) GT PNEU. CONTROL PANEL
- 6) SP PNEU. CONTROL PANEL

LEGEND

- SLUDGE
- - - - - POLYMER
- WATER
- AIR
- STEAM

FOR REFERENCE ONLY

THIS DRAWING IS COPY RIGHTED.
 THIS DRAWING IS A TRADE SECRET AND ONLY ENTRUSTED TO THE RECEIVER
 OF HIS PERSONAL USE. WITHOUT THE SIGNED WRITTEN CONSENT OF ANDRITZ-
 RUTHNER, INC. IT MUST NOT BE COPIED OR MADE AVAILABLE TO THIRD PARTIES,
 INCLUDING COMPETITORS, NOR MADE ACCESSIBLE TO SUCH PARTIES. ANY VIOLATION
 BY THE RECEIVER OR THIRD PARTIES FOR WHICH HE IS RESPONSIBLE CAN
 INSTITUTE A CAUSE FOR LEGAL ACTION. THIS DRAWING MUST BE RETURNED ON
 REQUEST OF THE COMPANY.

Drawn by: DT	Date: 8/6/98	 1010 COMMERCIAL BLVD. SOUTH ARLINGTON, TEXAS 76017 Phone: (817)485-5611	Scale: NONE
Appr. by: 7727	Date: 8/6/98		Group:
Checked by:	Date:		Code:
Customer: GARDEN STATE PAPER		File name: PS-1351	Employee Deg. No.: FS-898-1
Item: RECOMMENDED PROCESS DIAGRAM		P.O. No.:	Job No.:
Drawing No.:		Rev.:	
PS-1351		0	