

TwistCap OSO Edge

Specification

Approved

TwistCap OSO Edge 30.0 B362-723-00

Commercial Name:

TwistCap™ OSO Edge

Introduction

This document contains information on additional material. For information on packaging material see separate documentation.

The information contained is related to functional properties and dimensions, which are important for the forming and filling of packages, and for the requirements on the packages.

Material components are continuously developed for optimal performance at minimum resource utilisation, following technical developments with our suppliers and in our factories. The customer shall be informed about any relevant changes.

This information is disclosed in a faith of trust between Tetra Pak and the customer and must not be disclosed to a third party without consensus of the two parties.

This specification is valid when completed customer name, Tetra Pak Market Company and Factory/Supply Unit, and with the person respectively.

The producer of the material stores quality documents for 3 years to ensure possibility to trace production data for the material.

Customer & Supply Unit

Customer:

Customer Factory Site:

Tetra Pak Market Company:

Tetra Pak Supply Unit:

Denomination & Quality

Quality denomination	Size	Variant	QQQQ-SSS-VV
TwistCap OSO Edge	30.0	Colour Pantone no.	B362-723-00
Commercial Name:			TwistCap™ OSO Edge

Food Contact Certificates

The additional material and the raw material components are in compliance with the Health and Safety regulations in EU.

Further details are available separately in Food Contact Certificates at Packaging Material Product Quality Portal, file called C 001.

Approval

Date: 2015-07-01

Name:

Livio Veronesi

Position:

Manager, Opening & Closure

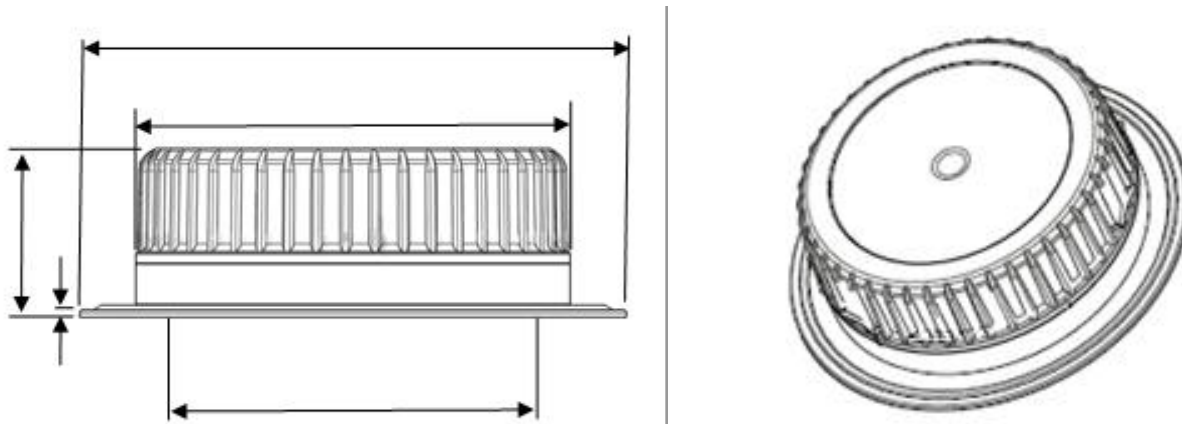
Company:

Tetra Pak Packaging Solutions

TwistCap OSO Edge 30.0 B362-723-00

Commercial Name: TwistCap™ OSO Edge

Illustration



Weight & Dimensions

PROPERTY	UNIT	NOMINAL VALUE	TOLERANCE (±)
Closure			
Total weight	g	2.70	0.26
Cap diameter	mm	32.5	0.25
Height, max	mm	12.65	0.3
Flange diameter	mm	40,1	0,3
Flange thickness	mm	0,55	0,05
Annual Bead	mm	27,6	0,2

N.B. The recommended hole size in the carton is: 33.5 mm
24.2 mm

Colours*

COLOUR	PANTONE NO.	MATERIAL CODE	PACKING ALTERNATIVE
White	-	A100000510	PA001

*) For information about limitations when using coloured caps, please contact your Tetra Pak contact person.

Material

Base; LDPE with colouring agent.
 Cap; HDPE with colouring agent.

TwistCap OSO Edge 30.0 B362-723-00
 Commercial Name: TwistCap™ OSO Edge

Primary packing

Caps are put in a folded plastic bag.

Box information

The box helps protecting the caps during transport and storage.

PROPERTY	UNIT	STANDARD	ALTERNATIVE
Box			
Dimensions, outside	mm	600x400x280	
Quantity, max	pcs/box	2800 ± 1%	± 1%
Weight, gross	kg	approx. 8,7	
Label data			
		- Article no.	
		- Box no.	
		- Lot no.	
		- Manufacturing date	
		- Quantity	

Transport unit

PROPERTY	UNIT	STANDARD	ALTERNATIVE
Dimensions	mm	1200x800x1264	
Quantity	boxes/pallet	16	
	pcs/pallet	44800 ± 1%	± 1%
Weight, gross	kg	approx. 162	

TwistCap OSO Edge 30.0 B362-723-00
 Commercial Name: TwistCap™ OSO Edge

Storage conditions

PROPERTY	UNIT	
For optimum closure performance i.e. store at 20-30°C (68-100F) for 24hrs prior to using		
Relative humidity	%	<80
Temperature	°C	5 - 35
Temperature 24 Hrs prior to usage	°C	-
Storage rotation		First in/first out

Storage time limit which guarantees the function of the material is 12 months after manufacturing date under the storage conditions recommended by Tetra Pak.

Food contact compliance

The specified conditions represent only food contact compliance and not technical suitability.
 In EU Under FDA

For all liquid foods packed under ambient conditions followed by long-term storage at ambient temperature

For all food types when used under conditions of use E-G as described in FDA regulation section 21 CFR 176.170 (c) Tables 1 and 2.

TwistCap OSO Edge

Specification Limited approved

TwistCap OSO Edge BIO 30.0 B560-723-00

Commercial Name: Bio-based TwistCap™ OSO Edge 30

Introduction

This document contains information on additional material. For information on packaging material see separate documentation.

The information contained is related to functional properties and dimensions, which are important for the forming and filling of packages, and for the requirements on the packages.

Material components are continuously developed for optimal performance at minimum resource utilisation, following technical developments with our suppliers and in our factories. The customer shall be informed about any relevant changes.

This information is disclosed in a faith of trust between Tetra Pak and the customer and must not be disclosed to a third party without consensus of the two parties.

This specification is valid when completed customer name, Tetra Pak Market Company and Factory/Supply Unit, and with the person respectively.

The producer of the material stores quality documents for 3 years to ensure possibility to trace production data for the material.

Customer & Supply Unit

Customer:

Customer Factory Site:

Tetra Pak Market Company:

Tetra Pak Supply Unit:

Denomination & Quality

Quality denomination	Size	Variant	QQQQ-SSS-VV
TwistCap OSO Edge BIO	30.0	Colour Pantone no.	B560-723-00
Commercial Name:			Bio-based TwistCap™ OSO Edge 30

Food Contact Certificates

The additional material and the raw material components are in compliance with the Health and Safety regulations in EU.

Further details are available separately in Food Contact Certificates at Packaging Material Product Quality Portal, file called C 001.

Approval

Date: 2016-07-01

Name: Livio Veronesi

Position:

Manager, Opening & Closure

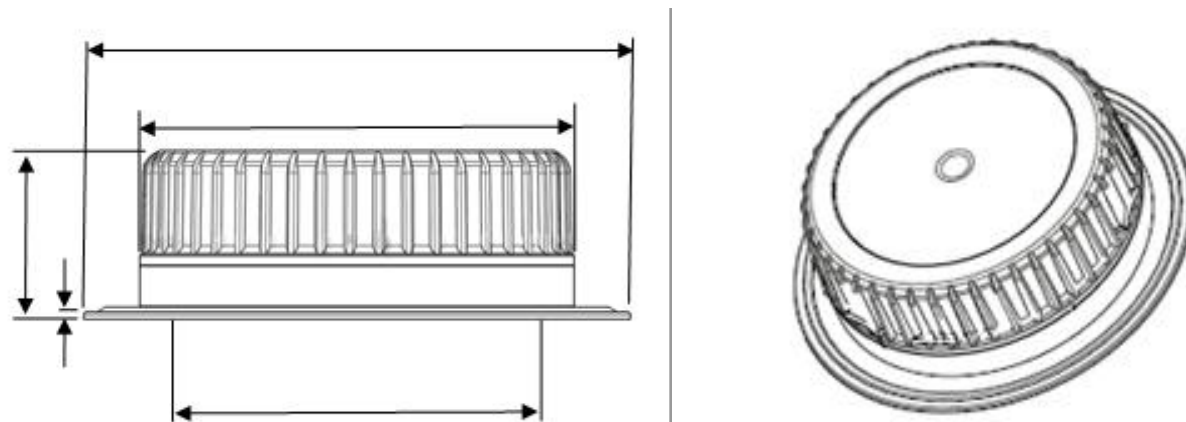
Company:

Tetra Pak Packaging Solutions

TwistCap OSO Edge BIO 30.0 B560-723-00

Commercial Name: Bio-based TwistCap™ OSO Edge 30

Illustration



Weight & Dimensions

PROPERTY	UNIT	NOMINAL VALUE	TOLERANCE (±)
Closure			
Total weight	g	2.70	0.26
Cap diameter	mm	32.5	0.25
Height, max	mm	12.65	0.3
Flange diameter	mm	40,1	0,3
Flange thickness	mm	0,55	0,05
Annual Bead	mm	27,6	0,2

N.B. The recommended hole size in the carton is: 33.5 mm
24.2 mm

Colours*

COLOUR	PANTONE NO.	MATERIAL CODE	PACKING ALTERNATIVE
White	-	A100000590	PA001

*) For information about limitations when using coloured caps, please contact your Tetra Pak contact person.

Material

Base; LDPE with colouring agent.
 Cap; HDPE with colouring agent.

TwistCap OSO Edge BIO 30.0 B560-723-00
 Commercial Name: Bio-based TwistCap™ OSO Edge 30

Primary packing

Caps are put in a folded plastic bag.

Box information

The box helps protecting the caps during transport and storage.

PROPERTY	UNIT	STANDARD	ALTERNATIVE
Box			
Dimensions, outside	mm	600x400x280	
Quantity, max	pcs/box	2800 ± 1%	± 1%
Weight, gross	kg	approx. 8,7	
Label data			
		- Article no.	
		- Box no.	
		- Lot no.	
		- Manufacturing date	
		- Quantity	

Transport unit

The transport unit protects the boxes and caps during transportation and storage before usage. The pallet should be single stacked during transportation. The pallet load shall be stretched wrapped.

PROPERTY	UNIT	STANDARD	ALTERNATIVE
Dimensions	mm	1200x800x1264	
Quantity	boxes/pallet	16	
	pcs/pallet	44800 ± 1%	± 1%
Weight, gross	kg	approx. 162	

TwistCap OSO Edge BIO 30.0 B560-723-00

Commercial Name: Bio-based TwistCap™ OSO Edge 30

Storage conditions

PROPERTY	UNIT	
For optimum closure performance i.e. store at 20-30°C (68-100F) for 24hrs prior to using		
Relative humidity	%	<80
Temperature	°C	5 - 35
Temperature 24 Hrs prior to usage	°C	-
Storage rotation		First in/first out

Storage time limit which guarantees the function of the material is 12 months after manufacturing date under the storage conditions recommended by Tetra Pak.

Food contact compliance

The specified conditions represent only food contact compliance and not technical suitability.
In EU Under FDA

For all liquid foods packed under ambient conditions followed by long-term storage at ambient temperature.

For all food types when used under conditions of use A-H as described in FDA regulation section 21 CFR 176.170 (c) Tables 1 and 2.