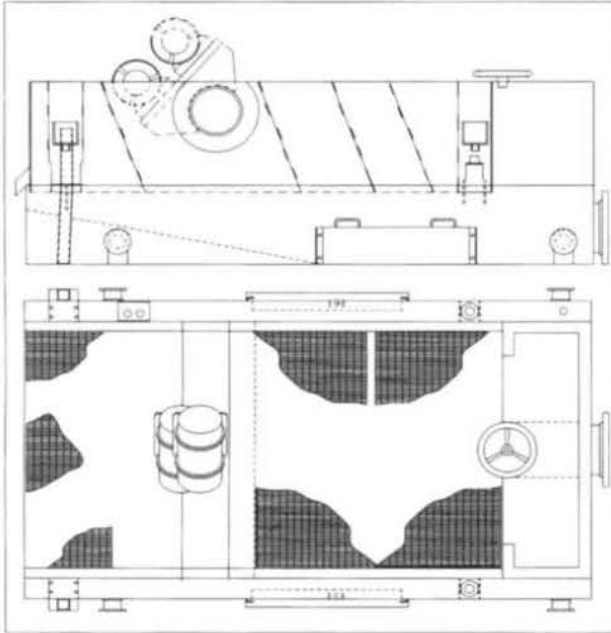




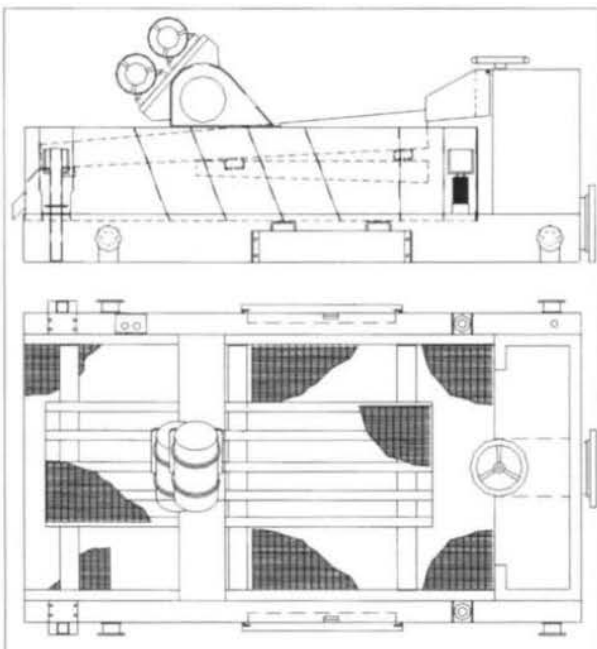
Kem-Tron Technologies, Inc.



**Linear Motion Shaker
KTL-48 Standard**

KTL-48 Specifications

- Length 120"(305 cm)
- Width 70" (178 cm)
- Height 59"(150 cm)
- Weir Height 31" (79 cm)
- Weight 4545 Lbs (2066 Kgs)
- Screen Area 28 Sq. ft(2.6 m²)
- G Force 3.0 to 6.1
- Stroke 0.106
- Deck Angle Adjustable +5° to -2 1/2°
- Power 230/460V, 60Hz or 190/380V, 50 Hz., Two 1.3 HP Electric Vibrators, Two starters., No Belts, No gear box
- Screen Changing Space Requirement Approximately 18" in front of unit
- Screens Offered Hooks strip KDX-24 through KDX-250 multilayer and KDX-10(S) through KDX-120(S), High performance KDX-84R through KDX-250. Option pretension screen with Wedge.
- Installation Mounting location must be firm and level in both direction, fasten by bolting or welding.



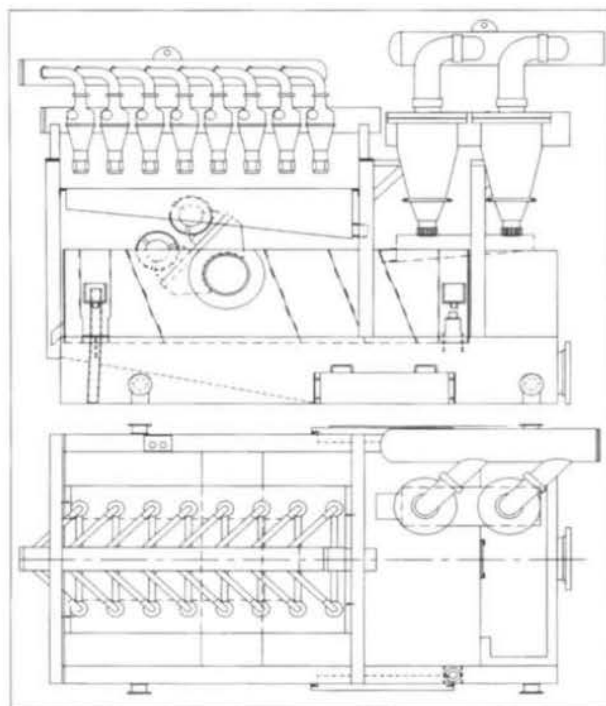
**Linear Motion Shaker
KTL-48D Double Deck**

KTL-48D Specifications

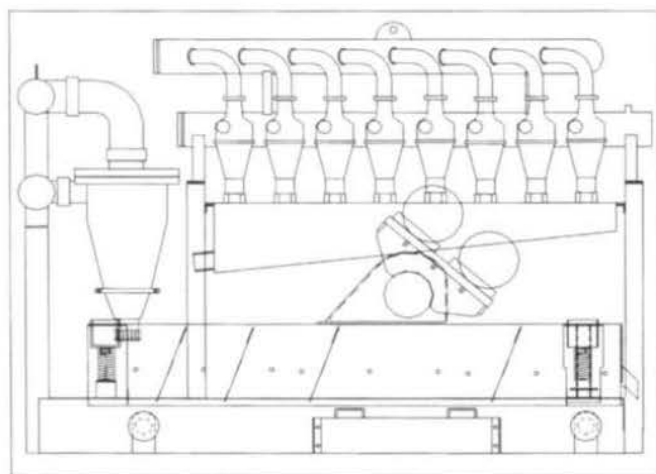
- Length 120"(305 cm)
- Width 70" (178 cm)
- Height 59"(150 cm)
- Weir Height 32" (81.28 cm)
- Weight 5170 Lbs (2350 Kgs)
- Screen Area 43 Sq. ft. (3.99 m²) Two decks
- G Force 3.0 to 6.0
- Stroke 0.117
- Deck Angle Adjustable +5° to -2 1/2°
- Power 230/460V, 60Hz or 190/380V, 50 Hz., Two 2.4 HP Electric Vibrators, Two starters., No Belts, No gear box
- Screen Changing Space Requirement Approximately 30" in front of unit
- Screens Offered Hooks strip KDX-24 through KDX-250 multilayer and KDX-10(S) through KDX-120(S), High performance KDX-84R through KDX-250. Option pretension screen with Wedge.
- Installation Mounting location must be firm and level in both direction, fasten by bolting or welding.



Kem-Tron Technologies, Inc.



**Linear Motion Mud Cleaner KTL-48A
with Desander Model VSP-212
and Desilter Model KT-16-240**



**Linear Motion Mud Cleaner KTL-48B
with Desander Model VSP-212
and Desilter Model KT-16-240**

KTL-48A Specifications

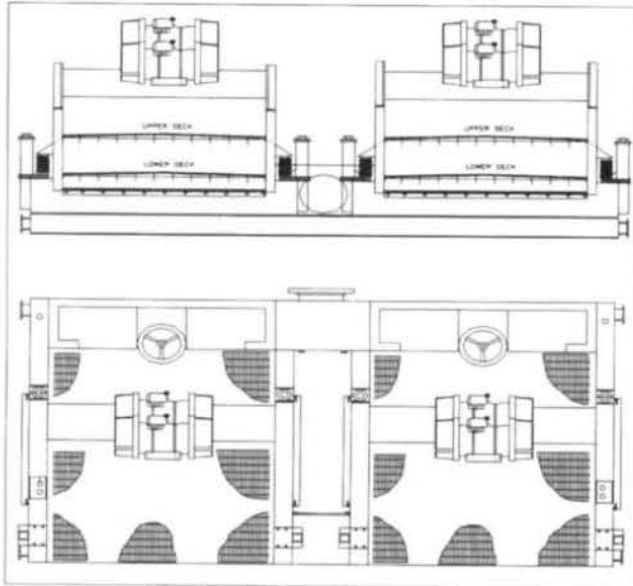
- Length 120" (305 cm)
- Width 70" (178 cm)
- Height 99" (252 cm) with Hydrocyclone
- Weight 6611 Lbs (3005 Kgs)
- Screen Area 28 Sq. ft (2.6 m²)
- G Force 3.0 to 6.1
- Stroke 0.106
- Deck Angle Adjustable +5° to -2°
- Power 230/460V, 60Hz or 190/380V, 50 Hz., Two 1.3 HP Electric Vibrators, Two starters., No Belts, No gear box
- Screen Changing Space Requirement Approximately 18" in front of unit
- Screens Offered Hooks strip KDX-24 through KDX-250 multilayer and KDX-10(S) through KDX-120(S), High performance KDX-84R through KDX-250. Option pretension screen with Wedge.
- Installation Mounting location must be firm and level in both direction, fasten by bolting or welding.
- Others **KTL-48A** also available with any combination of Desander VSP-112 or VSP-312 and Desilter KT-8-240 or KT-10-240 or KT-20-240

KTL-48B Specifications

- Length 107" (272 cm)
- Width 70" (178 cm)
- Height 79" (198 cm) with Hydrocyclone
- Weight 5500 Lbs (2500 Kgs)
- Screen Area 28 Sq. ft (2.6 m²)
- G Force 4 to 8.4
- Stroke 0.106
- Deck Angle Adjustable +5° to -2°
- Power 230/460V, 60Hz or 190/380V, 50 Hz., Two 2.4 HP Electric Vibrators, Two starters., No Belts, No gear box
- Screen Changing Space Requirement Approximately 18" in front of unit
- Screens Offered Hooks strip KDX-24 through KDX-250 multilayer and KDX-10(S) through KDX-120(S), High performance KDX-84R through KDX-250. Option pretension screen with Wedge.
- Installation Mounting location must be firm and level in both direction, fasten by bolting or welding.
- Others **KTL-48B** also available with any combination of Desander VSP-112 or VSP-312 and Desilter KT-8-240 or KT-10-240 or KT-20-240



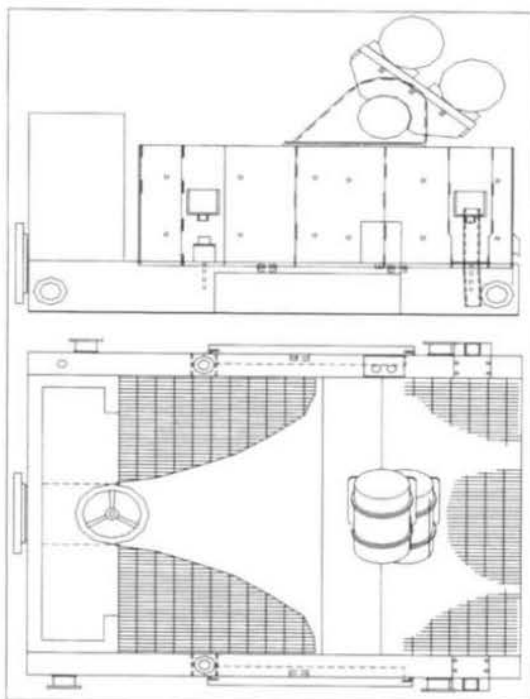
Kem-Tron Technologies, Inc.



**Linear Motion Shaker
KTL-48DT Dual Tandem Deck**

KTL-48DT Specifications

- Length 80" (203 cm) in direction of Mud flow
- Width 148" (375 cm)
- Height 66" (168 cm)
- Weir Height 38" (97 cm)
- Weight 8040 Lbs (3655 Kgs)
- Screen Area 74.64 Sq. ft. (6.92 m²) Two decks
- G Force 3.0 to 6.25
- Stroke 0.132
- Deck Angle Adjustable +5° to -2 1/2°
- Power 230/460V, 60Hz or 190/380V, 50 Hz., Two 1.3 HP Electric Vibrators, Two starters., No Belts, No gear box
- Screen Changing Space Requirement Approximately 30" in front of unit
- Screens Offered Hooks strip KDX-24 through KDX-250 multilayer and KDX-10(S) through KDX-120(S), High performance KDX-84R through KDX-250. Option pretension screen with Wedge.
- Installation Mounting location must be firm and level in both direction, fasten by bolting or welding.
- Others Replaces earlier Model Elliptical & Circular motion Dual Tandem Shaker



**Linear Motion Shaker
KTL-48T Tandem Deck**

KTL-48T Specifications

- Length 80" (203 cm)
- Width 70" (178 cm)
- Height 60" (153 cm)
- Weir Height 32" (81.28 cm)
- Weight 3520 Lbs (1600 Kgs)
- Screen Area 37.32 Sq. ft. (3.46 m²) Two decks
- G Force 3.0 to 6.25
- Stroke 0.132
- Deck Angle Adjustable +5° to -2 1/2°
- Power 230/460V, 60Hz or 190/380V, 50 Hz., Two 1.3 HP Electric Vibrators, Two starters., No Belts, No gear box
- Screen Changing Space Requirement Approximately 30" in front of unit
- Screens Offered Hooks strip KDX-24 through KDX-250 multilayer and KDX-10(S) through KDX-120(S), High performance KDX-84R through KDX-250. Option pretension screen with Wedge.
- Installation Mounting location must be firm and level in both direction, fasten by bolting or welding.
- Others Replaces earlier Model Elliptical & Circular motion Tandem Shaker