

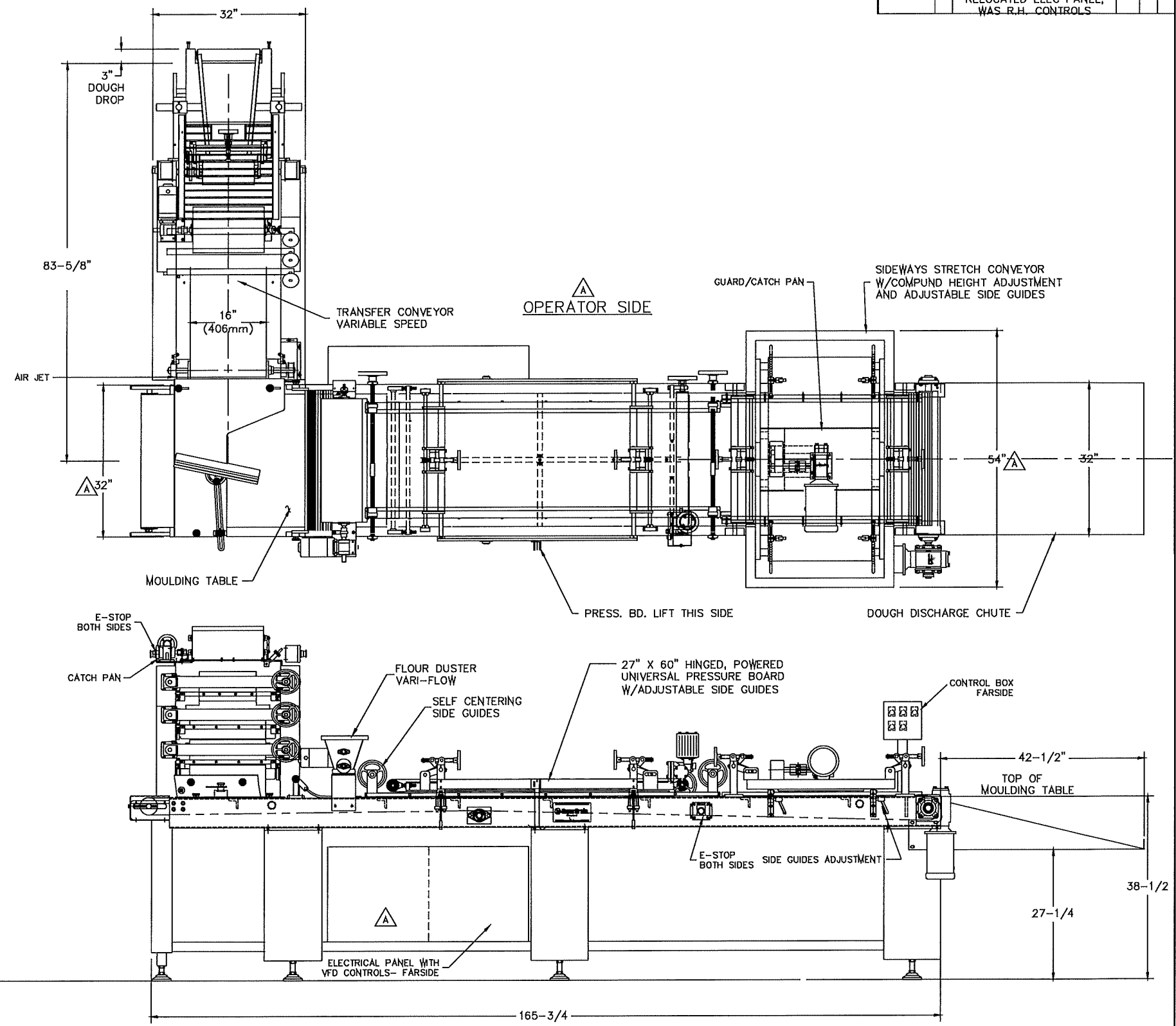
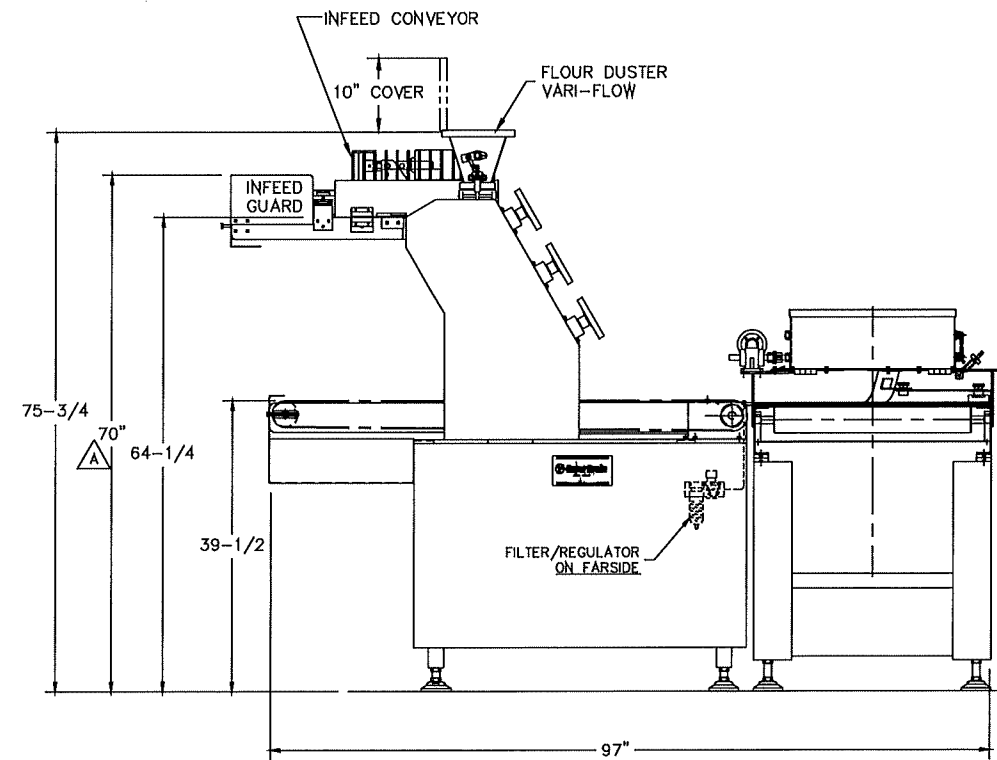
DATE	REV	REVISION (+ ADD, - REMOVE, ± WAS)	QCR No	DR BY	CR BY
9/13/99	A	CONVEYOR WIDTH WAS 28"; PRESS BD WAS 23" WIDE; RELOCATED ELEC PANEL; WAS R.H. CONTROLS		JCC	

SUPERGRAIN L3-3D CROSS GRAIN MOULDER

FOR: SPECIALTY BAKING CO. SANTA FE SPRINGS, CA.
PROJECT NO.: 99318

GENERAL SPECIFICATIONS

- LH MACHINE/LH CONTROLS Δ
- INFEED CONVEYOR WITH ADJUSTABLE ROLLERS AND ADJUSTABLE SIDE GUIDES
- SIX ROLLER SHEETER HEAD WITH UHMW COVERED ROLLERS
- 12" WIDE GROOVED TOP ROLLERS, 16" WIDE MIDDLE AND BOTTOM ROLLERS GEAR DRIVEN.
- DIGITAL INDICATORS SHOWS ROLLER SPACING
- SCRAPERS-HARDENED, GROUND AND TEFLON COATED
- SPECIAL VARI-FLOW DUSTERS INCLUDED FOR HEAD, AND MOULDING CONVEYOR, 90 VDC.
- 16" WIDE TRANSFER BELT, PEBBLE TOP, VARIABLE SPEED, 550FPM MAX
- TEFLON COATED SLIDE PLATE WITH AIR JET.
- 28" WIDE ENDLESS MOULDING BELT, VARIABLE SPEED 200' FPM MAX.
- UNIVERSAL STYLE PRESSURE BOARD 27" X 60" POWERED WITH ADJUSTABLE SIDE GUIDES, HINGED WITH GAS SHOCK LIFT ASSIST
- SIDEWAYS STRETCH CONVEYOR WITH 3/4" HIGH SIDE GUIDES, 1/2HP DRIVE.
- STAINLESS STEEL DOUGH DISCHARGE CHUTE.
- HEAVY STAINLESS STEEL BASE. REINFORCED STAINLESS STEEL MOULDING TABLE
- ALL BALL BEARINGS
- MOUNTED ON ADJUSTABLE HEIGHT LEGS
- GEARHEAD MOTORS: @230VOLTS, 3 PHASE, 60 HZ.
 - 1-1/2 HP SHEETER DRIVE - CONSTANT SPEED
 - 3/4 HP TRANSFER CONVEYOR DRIVE - AC INVERTER
 - 1/2 HP SIDEWAYS CONVEYOR DRIVE - AC INVERTER
 - 2 HP MOULDER CONVEYOR DRIVE - AC INVERTER
- U.L LISTED ELECTRICAL PANEL.



NOTE: APPROVAL DRAWING
ANY CHANGES MAY RESULT IN ADDITIONAL CHARGES

APPROVED BY: _____ DATE: _____

PEERLESS MACHINERY CORPORATION SIDNEY, OHIO	
CUSTOMER SPECIALTY BAKING CO.	DRAWN BY JCC
SCALE 1:12	TITLE CERTIFIED DATA SHEET L3 - 3D CROSS GRAIN MOULDER
DATE 8/16/99	FILE NUMBER 152-LD99318