

SCREEN

POD

Creating a Future in Print

# Truepress Jet **W3200UV** Series

Wide-format UV Inkjet Printing System

A print speed of 150 m<sup>2</sup>/hr and outstanding quality  
redefines in-store promotions







## A revolution in speed for in-store promotions

**A new high-speed model joins the highly successful Truepress Jet W3200UV series.**

The challenge: to convert products shops want to sell into items customers want to buy.

POP displays have a proven ability to strongly influence purchasing behavior.

The Truepress Jet W3200UV delivers previously unseen performance when handling diverse, large-lot jobs requiring a quick turnaround. This highly regarded system can also be upgraded to SCREEN's new high-speed model, the Truepress Jet W3200UV HS.

Rapidly changing consumer needs can now be met as they arise without missed opportunities.

With its unsurpassed throughput, UV inkjet printing brings a level of flexibility and cost performance to the handling of media that is difficult to achieve with offset or screen printing – particularly with short-run work. The difference compared to conventional POP production systems is remarkable.

The exact promotional tools required by outlet shops and other distributors can now be delivered as they are needed. UV inkjet printing marks the start of a major revolution for in-store promotions.







Large POP



Large real estate signs



Display stands



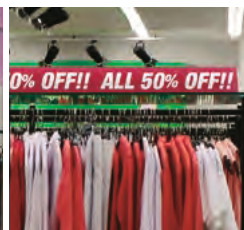
Cardboard packaging



Counter-top POP



Display stands



Banners



Suspended POP



Posters, panels

# HIGH SPEED & HIGH QUALITY

## HIGH SPEED & HIGH QUALITY



### High-speed printing of 150 m<sup>2</sup>/hr at commercial quality (HS model)

If printing is simply "fast" but the quality is unsatisfactory, POP advertisements are virtually meaningless. The Truepress Jet W3200UV HS delivers a class-leading speed of 150 square meters (1,614.5 square feet) per hour at true commercial quality. Short-turnaround work or jobs with multiple requirements can now be handled with speed.

A standard model offering a top printing speed of 85 square meters (914.9 square feet) per hour is also available. If job volumes increase, this system can be upgraded on site to Truepress Jet W3200UV HS specifications. With its choice of two models, the Truepress Jet W3200UV series accommodates any workflow.

#### Processing of up to 29 beds per hour enables rapid completion of short turnaround and high volume lots

|                          | Max. speed       | Standard quality |
|--------------------------|------------------|------------------|
| Truepress Jet W3200UV HS | 29 beds per hour | 19 beds per hour |
| Truepress Jet W3200UV    | 16 beds per hour | 12 beds per hour |

1. The full size of a single bed is 3.2 x 1.6 meters (125.9 x 62.9 inches).

2. Figures exclude changeover times.

### High-quality printing at a resolution of 1,000 dpi (apparent)

The Truepress Jet W3200UV series uses high-precision linear drive motors to deliver instantaneous power to the printhead unit and print table. The ability to adjust the transfer speed of the heads allows the accuracy of drop placement for the ink to be optimized, enabling sharp printing of even very small characters.

The adoption of piezo on demand printheads also achieves high-quality printing at an apparent resolution of 1,000 dpi. While the standard model is optimized for production of POP displays, the HS model is able to deliver photographic quality finishing thanks to its Fine Photo Quality mode.

#### Print modes

|                          | Photo Quality | POP production |
|--------------------------|---------------|----------------|
| Truepress Jet W3200UV HS | ✓             | ✓              |
| Truepress Jet W3200UV    | —             | ✓              |

1. The HS model features six print modes while the standard model is equipped with four.

2. Contact your SCREEN representative for details of throughput with Photo Quality and Fine Photo Quality modes.



Standard quality



Photographic quality

# LENTICULAR

## LENTICULAR



### High-speed printing of large-scale lenticular output

Lenticular printing can be used to produce various high-impact 2D and 3D effects that create the feeling objects are literally jumping out of printed media or patterns are changing and moving. With their high-definition flatbeds and outstanding speed, Truepress Jet W3200UV systems make it practical to take on previously time-consuming and unrealistic large-size lenticular jobs as regular work.

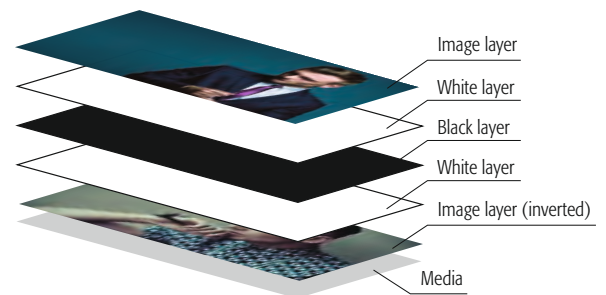
## MULTI-LAYER

### Adoption of a multi-layer function as a standard feature

A multi-layer function providing precise overprinting of up to eight layers is now installed as a standard feature. The new function allows each layer to be set individually with the most suitable print mode. This improves productivity and enables each job to be output at optimum quality. Thanks to their high-definition flat bed mechanisms and outstanding productivity, Truepress Jet W3200UV systems make it possible to take on previously unrealistic large-size multi-layer jobs as regular work.

### Double-sided window films

Window films with different designs printed on the top and bottom layers: Both sides appear as normal images, allowing layouts with different text or designs (five layers).

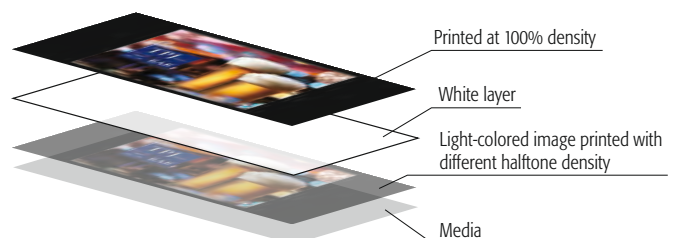


Day time

Night time

### Backlit day-night display

The Truepress Jet W3200UV series is capable of creating a day-night display that uses ordinary ambient light for day time display and integrated backlighting for night time display. While the top and bottom layers have the same design, the bottom layer is printed with a different halftone density, making it possible to reproduce the same density during the day time as at night time (three layers).





# MATTE & SILK

## MATTE & SILK

### A new level of expression with matte and silk modes

UV curing has the unique ability to create a matte finish when performed quickly and gloss finish when performed slowly. The Truepress Jet W3200UV series takes advantage of this feature by using its proprietary UV lamp shutter to precisely control the exposure timing of the UV lamp. This enables the creation of matte or silk finish textures whenever required.



Silk finish



Matte finish

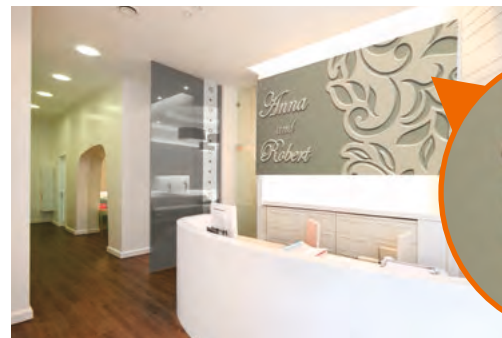
# MULTI-LAYER



Exterior view



Interior view



### Multi-layered printing

Thanks to its advanced UV curing and high-precision flat printhead transfer systems, the Truepress Jet W3200UV series is able to print up to eight superimposed layers. The lower layers can be rapidly built up in high-speed mode, with the top layer printed in high-quality mode to create an attention-grabbing raised finish. This function makes it possible to quickly output materials with embossing and other "three-dimensional" effects.



Day time



Night time

### Trick backlighting

Trick backlighting combines backlit panels to produce a unique effect. While the light of the panels is off, reflected light displays the front-most image layer. However, when the panel lighting is turned on, the backlight illuminates the design and lettering printed on the mask layers. Different design effects can be produced during the day and night time, making this medium ideal for outdoor advertising.

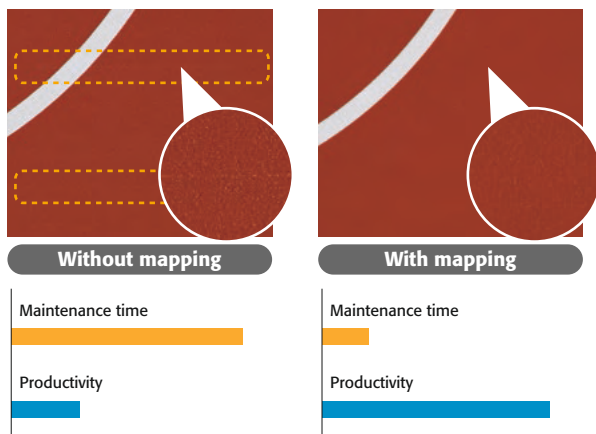
# Advanced technology incorporating extensive proprietary knowhow enables richly expressive continuous printing

## Advanced features for continuous production

### Nozzle mapping function\*

With the installation of the nozzle mapping function, in the unlikely event a print nozzle becomes clogged, another nozzle will take over its operation. This ensures continuous operation with no loss of either productivity or image quality.

\* Not all processing can be recovered with this function



### Auto-cleaning function (option)

The auto-cleaning function can easily be run from the touch panel during daily maintenance to ensure the printhead module is always in the best possible condition. This dramatically reduces the labor and lost time usually associated with troublesome printhead cleaning procedures.



## Flexibility to handle various media types

The printhead unit has been fitted with new proprietary UV lamp shutters. The panel monitor can be used to easily adjust the respective intensities of the left and right UV lamps to any of 100 levels. The new system provides improved control of heat-sensitive materials, adhesives and odors from cured inks.

## Safety measure to prevent accidents and injuries

The installation of area sensors allows printing to be stopped automatically if an operator or object enters a particular area, helping to prevent accidents. Collision prevention sensors are also installed in the printheads, this time helping to prevent damage to the printheads caused by any impact with print media.

## Wide-ranging expressiveness and versatility Truepress ink

### Flexible inks that stand up to bending and folding

The Truepress Jet W3200UV series uses brilliantly colored, flexible proprietary UV inks. Unlike standard UV printing inks, these inks do not crack when the printed media is bent, so the Truepress Jet W3200UV series can be used to print on tarpaulins, wrappers, and other media that will be bent or stretched after being printed.

### Support for a wide variety of media with white ink

White ink (optional) enables a variety of applications, including printing onto colored media and transparent media. It is especially effective when used for printing onto decorative signs in windows and metal plates, and ensures superior color saturation during color printing onto any type of media. On-site upgrades are also possible after installing a Truepress Jet W3200UV system to take advantage of new business opportunities.



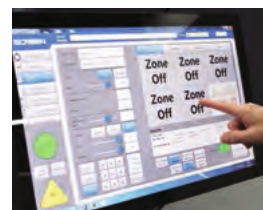
### Lc and Lm inks for even higher quality

In addition to standard cyan, magenta, yellow, and black inks, the Truepress Jet W3200UV series can print with Lc/Lm, and white inks (all optional). The use of these lighter inks produces photo quality suitable for use in the wide-format graphics market.

## Advanced features for continuous production

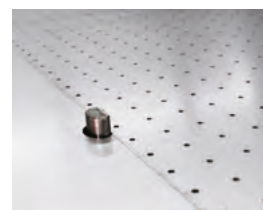
### Touch panel monitor

The adoption of a touch panel monitor featuring a newly developed user interface provides intuitive operation even for relatively inexperienced personnel.



### Area vacuum system

An area vacuum system that divides the printing bed into six zones is now installed as a standard item. The suction strength and vacuum area can be controlled according to the size and type of the media. This allows any material to be fixed securely, delivering consistently stable printing.



### Pin system

The printing table is equipped with pop-up type registration pins that enable smooth positioning of media. Any media can now be set quickly and accurately.

## A productivity upgrade kit is available for the Truepress Jet W3200UV HS.



Please contact your local SCREEN representative for more details.



Full after-sales service network ensures more reliable system operation, helping to build a stronger production base and greater peace of mind for customers

## Real-time maintenance minimizes down time

# TRUST Network Service

On-demand printing requires an ability to handle jobs with extremely short turnarounds. If equipment is vulnerable to unexpected problems, these deadlines become difficult to meet and more importantly, a company's reputation can be badly damaged, with both sales and client confidence suffering.

TRUST Network Service is a proprietary support program provided by SCREEN to address these very real concerns. This program offers a full menu of services including predictive diagnosis based on monitoring of normal equipment conditions, as well as regular analytical and maintenance reports. If trouble does occur, it is also able to precisely identify the area of malfunction.

In essence, TRUST Network Service is designed to minimize downtime and help build a stable base for effective production.



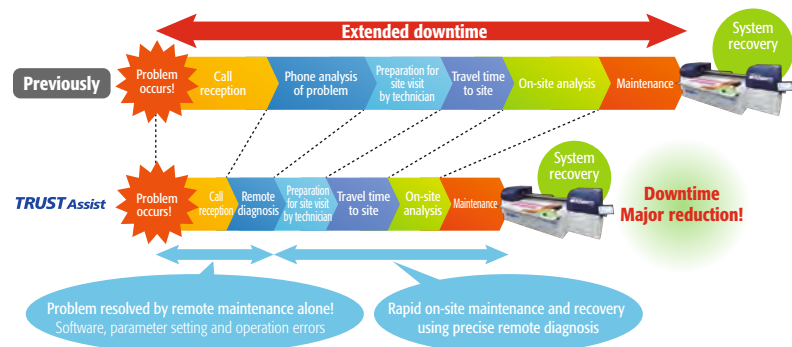
## Precise identification of errors minimizes downtime

# TRUST Assist

TRUST Assist is a remote service used to perform protective maintenance and if necessary, recovery of a system. If there is a problem, the SCREEN Group's specialized personnel perform a highly detailed and precise analysis of the equipment status using the error logs, allowing them to quickly classify the malfunction.

Problems with equipment software, parameter settings and operations can usually be effectively resolved simply through remote maintenance. Even when hardware malfunctions occur, SCREEN technicians can gain an accurate understanding of the equipment status using remote diagnosis, enabling them to make appropriate preparations before visiting the site.

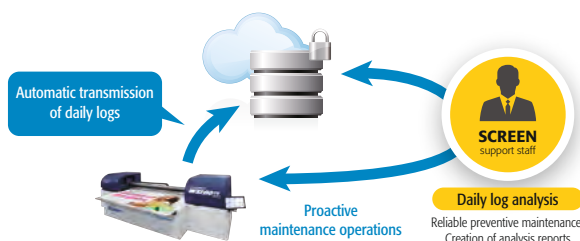
This advance knowledge helps them to quickly and reliably perform repair work and thereby reduce downtime to an absolute minimum.



## Predictive diagnosis helps to identify potential problems

# TRUST Guard

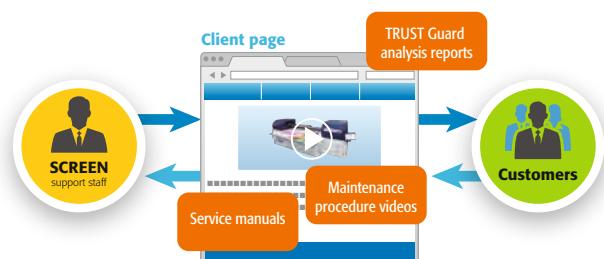
TRUST Guard is a service that allows SCREEN's specialized personnel to precisely understand the current condition of a system using log information and based on this, to reliably diagnose any potential problems. It also enables them to identify the optimal replacement timings for periodic maintenance parts and to create analytical reports that can be used for production and cost management.



## Customers are updated with the latest maintenance information

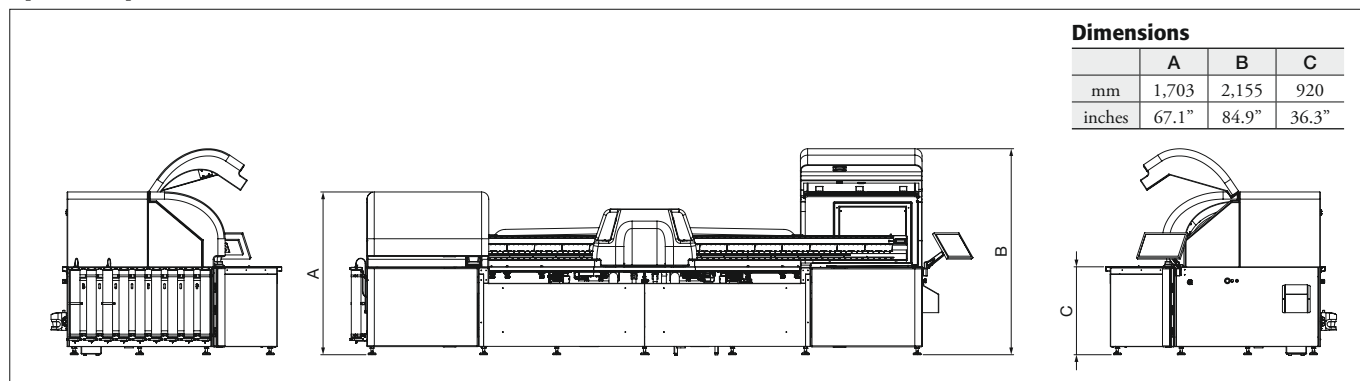
# TRUST Dialog

TRUST Dialog is a cloud-based service that provides individual clients with their own "page". Along with service manuals and videos introducing topics such as maintenance procedures, this is where clients can receive reports analyzing the operational efficiency of their systems and the latest maintenance data.





## Space requirements



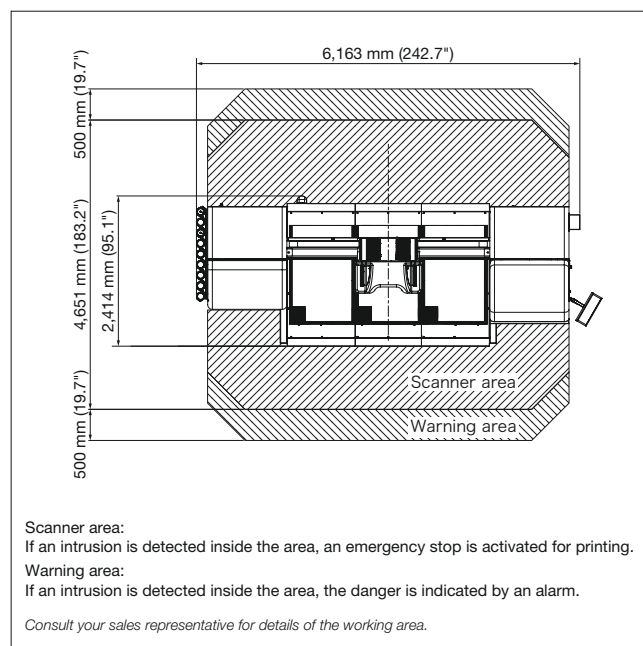
Dimensions

|        | A     | B     | C     |
|--------|-------|-------|-------|
| mm     | 1,703 | 2,155 | 920   |
| inches | 67.1" | 84.9" | 36.3" |

## Truepress Jet W3200UV series specifications

|                        |  |
|------------------------|--|
| Type                   | UV-cured flatbed inkjet printing system  |
| Media size             | Maximum width: 3,200 mm (125.9")<br>Maximum length: 1,600 mm (62.9")                                       |
| Output size            | Maximum width: 3,200 mm (125.9")<br>Maximum length: 1,600 mm (62.9")                                       |
| Media thickness        | Maximum 50 mm (1.9")   |
| Head                   | Piezo on-demand printhead  |
| Productivity           | Truepress Jet W3200UV HS: Max. 150 m <sup>2</sup> /hr<br>Truepress Jet W3200UV: Max. 85 m <sup>2</sup> /hr |
| Print modes            | Truepress Jet W3200UV HS: 6 modes<br>Truepress Jet W3200UV: 4 modes  |
| Resolution             | Max. 600 dpi (apparent 1,000 dpi)  |
| Inks                   | Truepress inks<br>Standard: CMYK<br>Option: Lc/Lm, white   |
| Dimensions (W x D x H) | 6,200 x 2,400 x 1,700 mm (244.1" x 94.5" x 67")  |
| Weight                 | 3,500 kg (7,700 lb)  |
| Power requirements     | Three phase 380 to 480 V, 50/60 Hz, 30 A<br>Single phase 180 to 250 V, 50/60 Hz, 30 A                      |
| Compressed air         | 7 bar, 0.35 m <sup>3</sup> /min, ISO8573.1: Class 1.4.1  |
| Operating environment  | Temperature: 20 to 30°C (68 to 86°F)<br>Humidity: 45 to 80% RH   |
| RIP                    | Caldera (option), ColorGATE (option),<br>Wasatch SoftRIP (option)  |
| Options                | Lc/Lm ink, white ink, RIP software,<br>auto-cleaning function (standard for HS model)                      |
| Safety standards       | CE marking, compliant with EMC and UL  |

## Installation location



## Safety measure to prevent accidents and injuries

The installation of area sensors allows printing to be stopped automatically if an operator or object enters a particular area, helping to prevent accidents. Collision prevention sensors are also installed in the printheads, this time helping to prevent damage to the printheads caused by any impact with print media.

## TRUST Network Service

The Truepress Jet W3200UV Series is covered by the Network support program.



## SCREEN Graphic and Precision Solutions Co., Ltd.

### HEAD OFFICE

• Teranouchi-agaru 4-chome, Horikawa-dori, Kamigyo-ku, Kyoto, 602-8585 Japan

### DAINIPPON SCREEN GRAPHICS (USA), LLC

• 5110 Tollview Dr., Rolling Meadows, IL 60008, USA/Phone +1-847-870-7400/Fax +1-847-870-0149 www.screenusa.com

### DAINIPPON SCREEN (DEUTSCHLAND) GmbH

• Mündelheimer Weg 39, 40472 Düsseldorf, Germany/Phone +49-211-472701/Fax +49-211-4727199

### DAINIPPON SCREEN (NETHERLAND) B.V.

• Bouwerij 46, 1185 XX Amstelveen, Holland/Phone +31-20-4567800/Fax +31-20-4567805 www.screeneurope.com

### DAINIPPON SCREEN SINGAPORE PTE. LTD.

• 29, Kaki Bukit View, Kaki Bukit Techpark II, Singapore 415963/Phone +65-6749-3833/Fax +65-6749-9010 www.screensp.com.sg

### DAINIPPON SCREEN (CHINA) LTD.

• Room 2001 - 2003, 20/F Cable TV Tower 9 Hoi Shing Road Tsuen Wan, N.T. Hong Kong/Phone +852-2953-0038/Fax +852-2755-8683

Beijing office/Phone +86-10-6708-9271, 9272, 9273/Fax +86-10-6708-9395

Shanghai office/Phone +86-21-3126-5122/Fax +86-21-5219-2199

Guangzhou office/Phone +86-20-3891-1112/Fax +86-20-3891-1036

### DAINIPPON SCREEN (TAIWAN) CO., LTD.

• 4F No. 126-1, Ming Tsu West Rd., Taipei, Taiwan/Phone +886-2-25862711/Fax +886-2-25914367

### DAINIPPON SCREEN (KOREA) CO., LTD.

• 10th Yonsei Bongsae B/D 4B-3, 1Ga, Bongsae-Dong, Joong-Gu, Seoul 100-161, Korea/Phone +82-2-7766-786/Fax +82-2-7766-787

### DAINIPPON SCREEN (AUSTRALIA) PTY. LTD.

• Suite 11, 2 Eden, Park Drive, Macquarie, NSW2133, Australia/Phone +61-2-9016-3400/Fax +61-2-9016-3425

Internet web site : [www.screen.co.jp/gp](http://www.screen.co.jp/gp)  
[www.screenusa.com](http://www.screenusa.com)  
[www.screeneurope.com](http://www.screeneurope.com)

- Generally the life of printheads can vary according to print volume, working environment and operator activity.
- This brochure was made using SPEKTA 2 screening.

We reserve the right to alter product design and specifications without prior notice.

No.205-160E Printed in Japan 10-14 040PSI(R2-2)