



MODEL 1700

OPERATING INSTRUCTIONS AND PARTS MANUAL

Read instructions carefully before attempting to assemble, install, operate or service this pressure washer. Failure to comply with instructions could result in personal injury and/or property damage!

**NOTE: This manual is intended for use
with the following model releases only:**

1710	1720	1722	1723	1724	1725	1730
1732	1733	1734	1735	1740	1742	1743
1744	1745	1750	1752	1753	1754	1755



SERIAL NUMBER:

DATE PURCHASED:

FOR SALES AND SERVICE, PLEASE CONTACT:

1710 SPECIFICATIONS

- Pump Volume At Pump Head: 2.75 GPM
- Pump Pressure At Pump Head: 1000 PSI
- Machine Voltage: 120VAC/60Hz/1Ph
- Total Machine Amperage: 18 Amps
- Machine Weight: 154 Lbs.
- Shipping Weight: 216 Lbs.
- Machine Dimensions:
Length = 30.25", Width = 21", Height = 15"

1720 SPECIFICATIONS

- Pump Volume At Pump Head: 3.9 GPM
- Pump Pressure At Pump Head: 2000 PSI
- Machine Voltage: 230VAC/60Hz/1Ph
- Total Machine Amperage: 28 Amps
- Machine Weight: 229 Lbs.
- Shipping Weight: 291 Lbs.
- Machine Dimensions:
Length = 30.25", Width = 21", Height = 15"

1722 SPECIFICATIONS

- Pump Volume At Pump Head: 3.9 GPM
- Pump Pressure At Pump Head: 2000 PSI
- Machine Voltage: 208VAC/60Hz/1Ph
- Total Machine Amperage: 30 Amps
- Machine Weight: 229 Lbs.
- Shipping Weight: 291 Lbs.
- Machine Dimensions:
Length = 30.25", Width = 21", Height = 15"

1723 SPECIFICATIONS

- Pump Volume At Pump Head: 3.9 GPM
- Pump Pressure At Pump Head: 2000 PSI
- Machine Voltage: 208VAC/60Hz/3Ph
- Total Machine Amperage: 16 Amps
- Machine Weight: 229 Lbs.
- Shipping Weight: 291 Lbs.
- Machine Dimensions:
Length = 30.25", Width = 21", Height = 15"

1724 SPECIFICATIONS

- Pump Volume At Pump Head: 3.9 GPM
- Pump Pressure At Pump Head: 2000 PSI
- Machine Voltage: 230VAC/60Hz/3Ph
- Total Machine Amperage: 14.4 Amps
- Machine Weight: 229 Lbs.
- Shipping Weight: 291 Lbs.
- Machine Dimensions:
Length = 30.25", Width = 21", Height = 15"

1725 SPECIFICATIONS

- Pump Volume At Pump Head: 3.9 GPM
- Pump Pressure At Pump Head: 2000 PSI
- Machine Voltage: 460VAC/60Hz/3Ph
- Total Machine Amperage: 7.2 Amps
- Machine Weight: 229 Lbs.
- Shipping Weight: 291 Lbs.
- Machine Dimensions:
Length = 30.25", Width = 21", Height = 15"

1730 SPECIFICATIONS

- Pump Volume At Pump Head: 3.5 GPM
- Pump Pressure At Pump Head: 3000 PSI
- Machine Voltage: 230VAC/60Hz/1Ph
- Total Machine Amperage: 36 Amps
- Machine Weight: 241 Lbs.
- Shipping Weight: 303 Lbs.
- Machine Dimensions:
Length = 30.25", Width = 21", Height = 15"

1732 SPECIFICATIONS

- Pump Volume At Pump Head: 3.5 GPM
- Pump Pressure At Pump Head: 3000 PSI
- Machine Voltage: 208VAC/60Hz/1Ph
- Total Machine Amperage: 38 Amps
- Machine Weight: 241 Lbs.
- Shipping Weight: 303 Lbs.
- Machine Dimensions:
Length = 30.25", Width = 21", Height = 15"

1733 SPECIFICATIONS

- Pump Volume At Pump Head: 3.5 GPM
- Pump Pressure At Pump Head: 3000 PSI
- Machine Voltage: 208VAC/60Hz/3Ph
- Total Machine Amperage: 23 Amps
- Machine Weight: 241 Lbs.
- Shipping Weight: 303 Lbs.
- Machine Dimensions:
Length = 30.25", Width = 21", Height = 15"

1734 SPECIFICATIONS

- Pump Volume At Pump Head: 3.5 GPM
- Pump Pressure At Pump Head: 3000 PSI
- Machine Voltage: 230VAC/60Hz/3Ph
- Total Machine Amperage: 21.5 Amps
- Machine Weight: 241 Lbs.
- Shipping Weight: 303 Lbs.
- Machine Dimensions:
Length = 30.25", Width = 21", Height = 15"

1735 SPECIFICATIONS

- Pump Volume At Pump Head: 3.5 GPM
- Pump Pressure At Pump Head: 3000 PSI
- Machine Voltage: 460VAC/60Hz/3Ph
- Total Machine Amperage: 11 Amps
- Machine Weight: 241 Lbs.
- Shipping Weight: 303 Lbs.
- Machine Dimensions:
Length = 30.25", Width = 21", Height = 15"

1740 SPECIFICATIONS

- Pump Volume At Pump Head: 4.8 GPM
- Pump Pressure At Pump Head: 3000 PSI
- Machine Voltage: 230VAC/60Hz/1Ph
- Total Machine Amperage: 45 Amps
- Machine Weight: 257 Lbs.
- Shipping Weight: 319 Lbs.
- Machine Dimensions:
Length = 30.25", Width = 21", Height = 15"

1742 SPECIFICATIONS

- Pump Volume At Pump Head: 4.8 GPM
- Pump Pressure At Pump Head: 3000 PSI
- Machine Voltage: 208VAC/60Hz/1Ph
- Total Machine Amperage: 45 Amps
- Machine Weight: 257 Lbs.
- Shipping Weight: 319 Lbs.
- Machine Dimensions:
Length = 30.25", Width = 21", Height = 15"

1743 SPECIFICATIONS

- Pump Volume At Pump Head: 4.8 GPM
- Pump Pressure At Pump Head: 3000 PSI
- Machine Voltage: 208VAC/60Hz/3Ph
- Total Machine Amperage: 29 Amps
- Machine Weight: 257 Lbs.
- Shipping Weight: 319 Lbs.
- Machine Dimensions:
Length = 30.25", Width = 21", Height = 15"

1744 SPECIFICATIONS

- Pump Volume At Pump Head: 4.8 GPM
- Pump Pressure At Pump Head: 3000 PSI
- Machine Voltage: 230VAC/60Hz/3Ph
- Total Machine Amperage: 26.8 Amps
- Machine Weight: 257 Lbs.
- Shipping Weight: 319 Lbs.
- Machine Dimensions:
Length = 30.25", Width = 21", Height = 15"

1745 SPECIFICATIONS

- Pump Volume At Pump Head: 4.8 GPM
- Pump Pressure At Pump Head: 3000 PSI
- Machine Voltage: 460VAC/60Hz/3Ph
- Total Machine Amperage: 13.5 Amps
- Machine Weight: 257 Lbs.
- Shipping Weight: 319 Lbs.
- Machine Dimensions:
Length = 30.25", Width = 21", Height = 15"

1750 SPECIFICATIONS

- Pump Volume At Pump Head: 5.6 GPM
- Pump Pressure At Pump Head: 2500 PSI
- Machine Voltage: 230VAC/60Hz/1Ph
- Total Machine Amperage: 45 Amps
- Machine Weight: 257 Lbs.
- Shipping Weight: 319 Lbs.
- Machine Dimensions:
Length = 30.25", Width = 21", Height = 15"

1752 SPECIFICATIONS

- Pump Volume At Pump Head: 5.6 GPM
- Pump Pressure At Pump Head: 2500 PSI
- Machine Voltage: 208VAC/60Hz/1Ph
- Total Machine Amperage: 45 Amps
- Machine Weight: 257 Lbs.
- Shipping Weight: 319 Lbs.
- Machine Dimensions:
Length = 30.25", Width = 21", Height = 15"

1753 SPECIFICATIONS

- Pump Volume At Pump Head: 5.6 GPM
- Pump Pressure At Pump Head: 2500 PSI
- Machine Voltage: 208VAC/60Hz/3Ph
- Total Machine Amperage: 29 Amps
- Machine Weight: 257 Lbs.
- Shipping Weight: 319 Lbs.
- Machine Dimensions:
Length = 30.25", Width = 21", Height = 15"

1754 SPECIFICATIONS

- Pump Volume At Pump Head: 5.6 GPM
- Pump Pressure At Pump Head: 2500 PSI
- Machine Voltage: 230VAC/60Hz/3Ph
- Total Machine Amperage: 26.8 Amps
- Machine Weight: 257 Lbs.
- Shipping Weight: 319 Lbs.
- Machine Dimensions:
Length = 30.25", Width = 21", Height = 15"

1755 SPECIFICATIONS

- Pump Volume At Pump Head: 5.6 GPM
- Pump Pressure At Pump Head: 2500 PSI
- Machine Voltage: 460VAC/60Hz/3Ph
- Total Machine Amperage: 13.5 Amps
- Machine Weight: 257 Lbs.
- Shipping Weight: 319 Lbs.
- Machine Dimensions:
Length = 30.25", Width = 21", Height = 15"

CONTENTS

Introduction 5

General Safety Information 5, 7

Component Identification 6

Pre-Operation Check 7

Set-Up Procedures 7

Operating Instructions 7

Shut Down Procedures 7

How To Use the Detergent Injector 8

General Washing Techniques 9

Maintenance 9

Exploded View, Left Side 10

Exploded View, Right Side 11

Parts List 12-14

Multi-Room Installation 15

Hose & Spray Gun Assembly 16

Troubleshooting 17-18

Oil Change Record 19

Maintenance 19

Specifications 20-21

Wiring Diagrams 22-33

Warranty

Model Number _____

Serial Number _____

Date of Purchase _____

The model and serial numbers will be found on a decal attached to the machine. You should record both serial number and date of purchase and keep in a safe place for future reference.

INTRODUCTION

Thank you for purchasing a Hotsy Pressure Washer.

This manual covers the operation and maintenance of the Hotsy 1700 series washers. All information in this manual is based on the latest product information available at the time of printing.

We reserve the right to make changes at any time without incurring any obligation.

Owner/User Responsibility:

The owner and/or user must have an understanding of the manufacturer's operating instructions and warnings before using this pressure washer. Warning information should be emphasized and understood. If the operator is not fluent in English, the manufacturer's instructions and warnings shall be read to and discussed with the operator in the operator's native language by the purchaser/owner, making sure that the operator comprehends its contents.

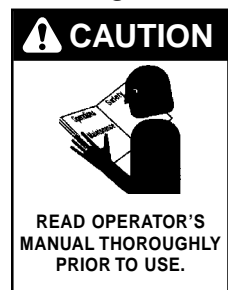
Owner and/or user must study and maintain for future reference the manufacturers' instructions.

This manual should be considered a permanent part of the machine and should remain with it if machine is resold.

When ordering parts, please specify model and serial number.

GENERAL SAFETY INFORMATION

WARNING: When using this machine basic precautions should always be followed, including the following:



CAUTION: To reduce the risk of injury, read operating instructions carefully before using.

1. Read the owner's manual thoroughly. Failure to follow instructions could cause malfunction of the machine and result in death, serious bodily injury and/or property damage.
2. Know how to stop the machine and bleed pressures quickly. Be thoroughly familiar with the controls.
3. Stay alert — watch what you are doing.
4. All installations must comply with local codes. Contact your electrician, plumber, utility company or the selling distributor for specific details.

To comply with the National Electrical Code (NFPA 70) and provide additional protection from risk of electric shock, these pressure washer are equipped with a UL approved ground fault circuit interrupter (GFCI) power cord.



WARNING: Flammable liquids can create fumes which can ignite causing property damage or severe injury.

WARNING: Risk of explosion — do not spray flammable liquids.

5. Risk of explosion - do not spray flammable liquids or operate in an explosive location.

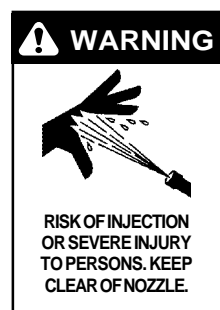


WARNING: Keep water spray away from electric wiring or fatal electric shock may result.

6. To protect the operator from electrical shock, the machine must be electrically grounded. It is the responsibility of the owner to connect this machine to a UL grounded receptacle of

proper voltage and amperage ratings. Do not spray water on or near electrical components. Do not touch machine with wet hands or while standing in water. Always disconnect power before servicing.

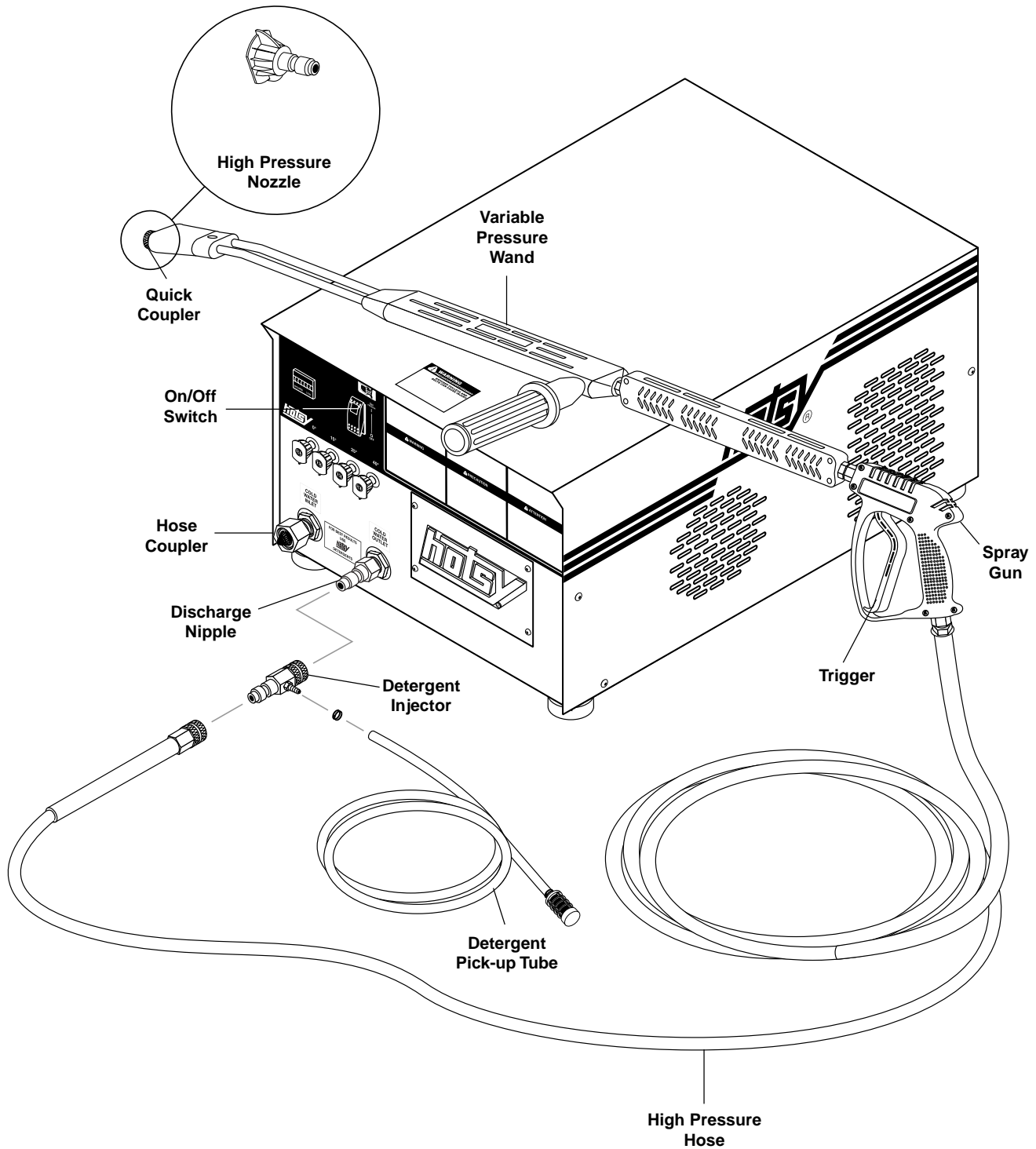
7. Grip cleaning wand securely with both hands before starting the cleaner. Failure to do this could result in injury from a whipping wand.



WARNING: The high pressure stream of fluid that this equipment can produce can pierce skin and its underlying tissues, leading to serious injury and possible amputation.

8. High pressure developed by these machines will cause personal injury or equipment damage. Use caution when operating. Do not direct discharge stream at people, or severe injury or death will result.
9. Never make adjustments on machine while in operation.

COMPONENT IDENTIFICATION





WARNING: High pressure spray can cause paint chips or other particles to become airborne and fly at high speeds.

10. Eye safety devices and foot protection must be worn when using this equipment.

11. Machines with spray gun should not be operated with the trigger in the off position for extensive periods of time as this may cause damage to the pump.
12. Protect from freezing.
13. Be certain all quick coupler fittings are secured before using pressure washer.
14. Do not allow acids, caustic or abrasive fluids to pass through the pump.
15. Inlet water must be cold and clean fresh water.
16. To reduce the risk of injury, close supervision is necessary when a machine is used near children. Do not allow children to operate the pressure washer. **This machine must be attended during operation.**
17. The best insurance against an accident is precaution and knowledge of the machine.
18. Hotsy will not be liable for any changes made to our standard machines or any components not purchased from Hotsy.

PRE-OPERATION CHECK

- ☐ Read machine safety warnings
- ☐ Pump oil (SAE 30W non-detergent oil)
- ☐ Cold water supply (1gpm over machines rating • 5/8" • 20 psi)
- ☐ Proper power supply and circuit protection
- ☐ Hose, wand, nozzles (nozzle sizes per serial plate)
- ☐ Water filter (intact, non restrictive)
- ☐ Read operation instructions
- ☐ This machine must be protected from the elements

SET-UP PROCEDURES

This machine is intended for indoor use. Machine must be stored indoors when not in use.

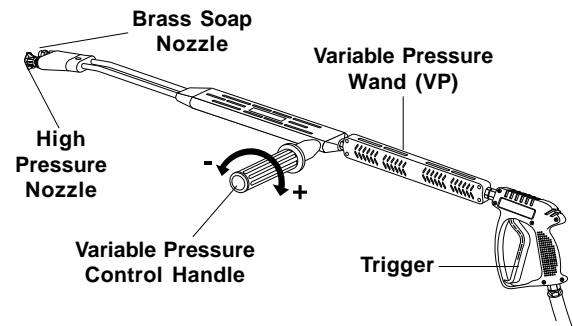
1. Attach a 5/8" garden hose to inlet connector. Minimum flow should be 1 gpm over the flow rate of the pressure washer.
2. Attach high pressure hose to discharge nipple using quick coupler. Lock coupler securely into place by pulling back coupler collar and inserting it onto dis-

charge nipple, then pushing collar forward to lock in place.

3. Attach wand to spray gun using teflon tape on threads to prevent leakage.
4. Attach connector on discharge hose to spray gun using teflon tape on threads.
5. Remove oil plug on top of pressure washer pump and replace with dipstick supplied. (This may be installed from the factory.)
6. Check oil level on oil dipstick on top of pump. Oil should be visible one half way up sight glass (30W non-detergent).

OPERATING INSTRUCTIONS

1. Read safety and preventative maintenance instructions before starting machine.
2. Turn on water at faucet and pull trigger on spray gun allowing water to flow until all air has discharged from system. Check for water leaks; tighten as needed.
3. Push the pump switch on.
4. Turn the variable pressure control handle clockwise to increase pressure.



Selection of high or low pressure is accompanied by turning the handle. **Note:** High pressure nozzle must be inserted at end of wand to obtain high pressure. To apply soap read operator's manual.

5. To apply detergent read "How to Use The Detergent Injector."

SHUT DOWN PROCEDURES

1. Rinse with clean water to remove any soap residue, by placing detergent hose into fresh water bucket and operating injector as described below.
2. Release the trigger on the spray gun. Turn the switch off if the machine is going to be left unattended. (Time delay only).
3. Turn off water supply.
4. Open spray gun to relieve remaining pressure.
5. Remove water supply hose.

HOW TO USE THE DETERGENT INJECTOR



WARNING: Some detergents may be harmful if inhaled or ingested, causing severe nausea, fainting or poisoning. The harmful elements may cause property damage or severe injury.

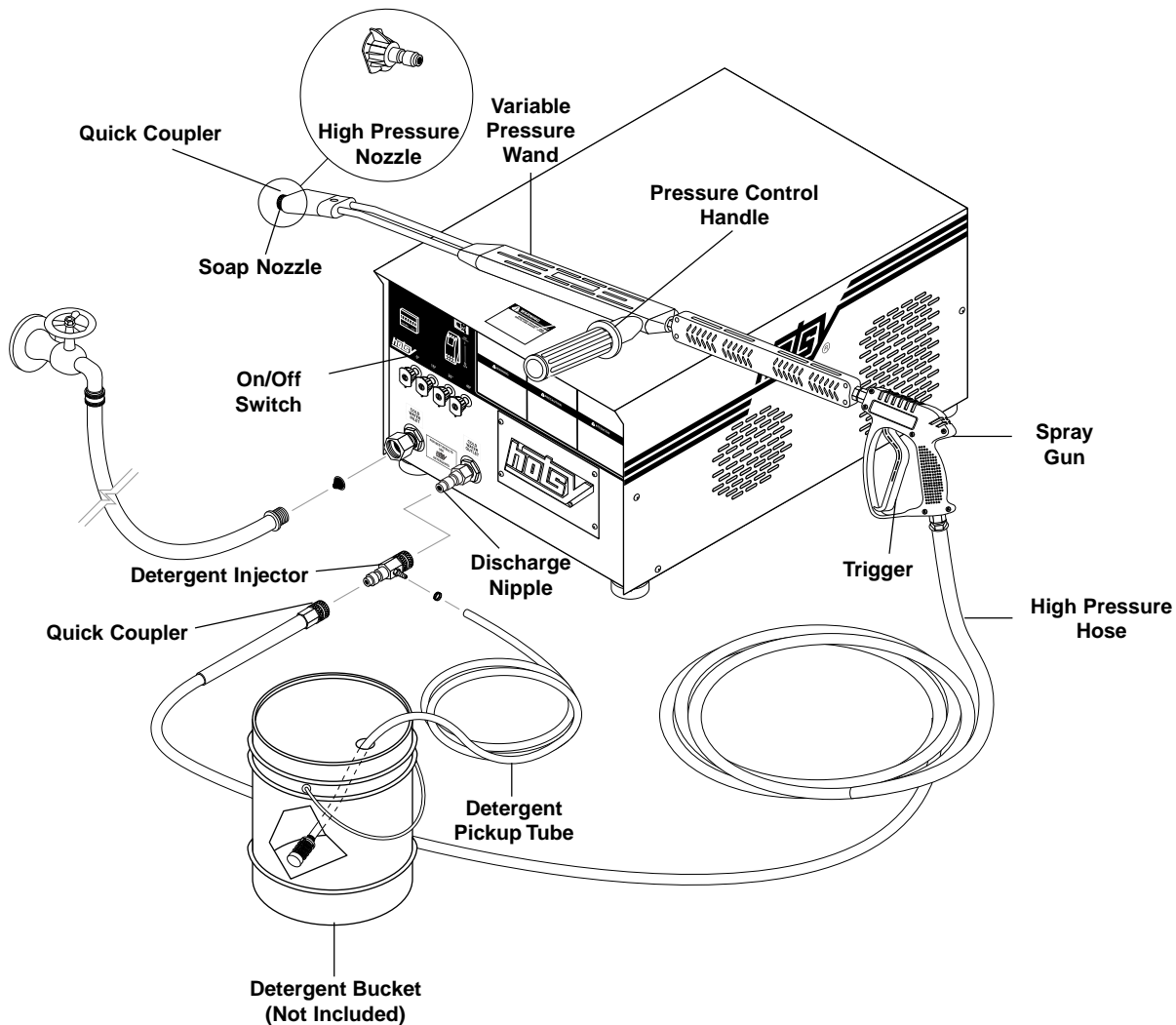
The machine can siphon and mix detergents with the use of the detergent injector kit.

1. Start machine as outlined in Operating Instructions.

2. Place detergent pick-up tube into container of detergent solution.
3. Turn the pressure control handle on the variable pressure wand counterclockwise to low pressure.
4. Open trigger on spray gun. Water detergent ratio is approximately 15 to 1.

NOTE: Soap will not siphon under high pressure.

5. When you finish with the detergents, rinse by simply turning the variable pressure control handle clockwise to high pressure.
6. After use, place siphon strainer into container of clear water and follow steps 3 and 4 to avoid detergent deposit build-up.



GENERAL WASHING TECHNIQUES

1. Hold spray nozzle a foot or so from the surface being cleaned. Spray at an angle to get under the material and lift it off.
2. When washing large objects, use detergent injector to apply detergent. Start washing from the bottom and work up. Allow the detergent to set 5-10 minutes. After washing, rinse from the top down.
3. Cleaning heavy dirt or material away with a hard stream of clear water is recommended before using a cleaning agent.

MAINTENANCE

Pump Lubrication

The pump on your 1700 Series pressure washer is a triplex ceramic plunger pump. As the plungers move back, water flows through the inlet valve into the manifold chamber. Then, when the plungers move forward, the inlet valves close and the discharge valves open to produce discharge pressure.

Use only SAE 30 weight non-detergent oil; change oil after first 50 hours of use. Thereafter, change oil every three months or at 500 hour intervals. Oil level should be checked through the use of the dipstick found on top of the pump, or half way up on the oil gauge window. Oil should be maintained at that level.

Unloader Valves

The unloader valve is connected directly to the discharge port of the pump. Its purpose is to allow recirculation back into the pump inlet when the trigger on the spray gun is closed.

Nozzles

Each machine is equipped with four spray nozzles depending on the flow and pressure of that particular model. Spray nozzles vary in bore size and angle of spray. When ordering replacement nozzles, please specify size and angle of nozzle. Nozzle size for each machine is located on the serial plate.

Winterizing Procedure

Damage due to freezing is not covered by warranty. Use the following cold weather procedures whenever the washer must be stored or operated outdoors under freezing conditions.

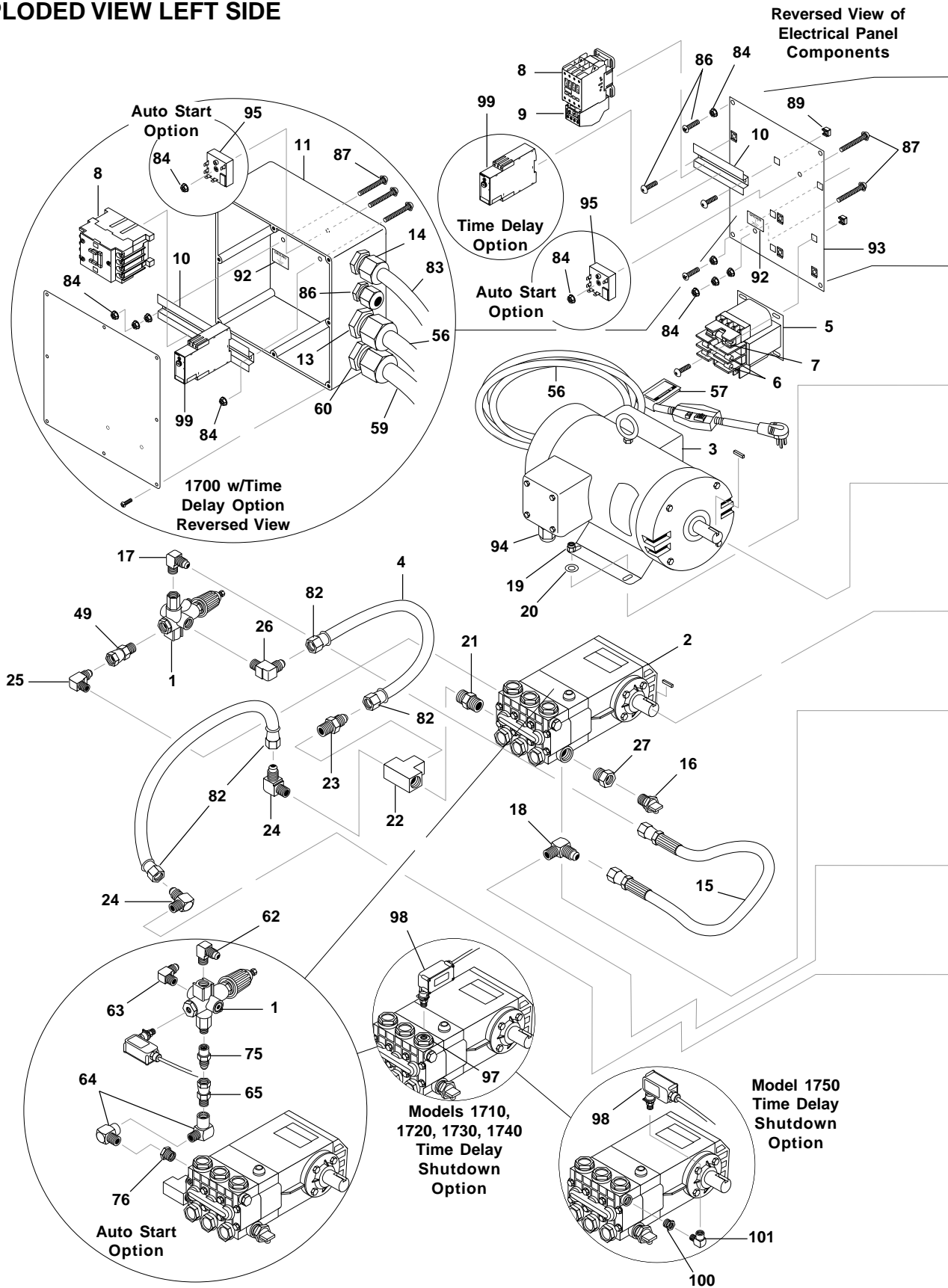
During winter months, when the temperature drops below 32°F, protecting your machine against freezing is necessary. A blowout valve is available which can be screwed on in place of the garden hose to blow water out of the system. When compressed air is not available or impractical, siphon a small amount of antifreeze into the machine and siphon a 50/50 mixture of antifreeze into the pump. Run the pump dry for a few seconds and disconnect all hoses to allow water to drain.

Low Pressure Diagnosis

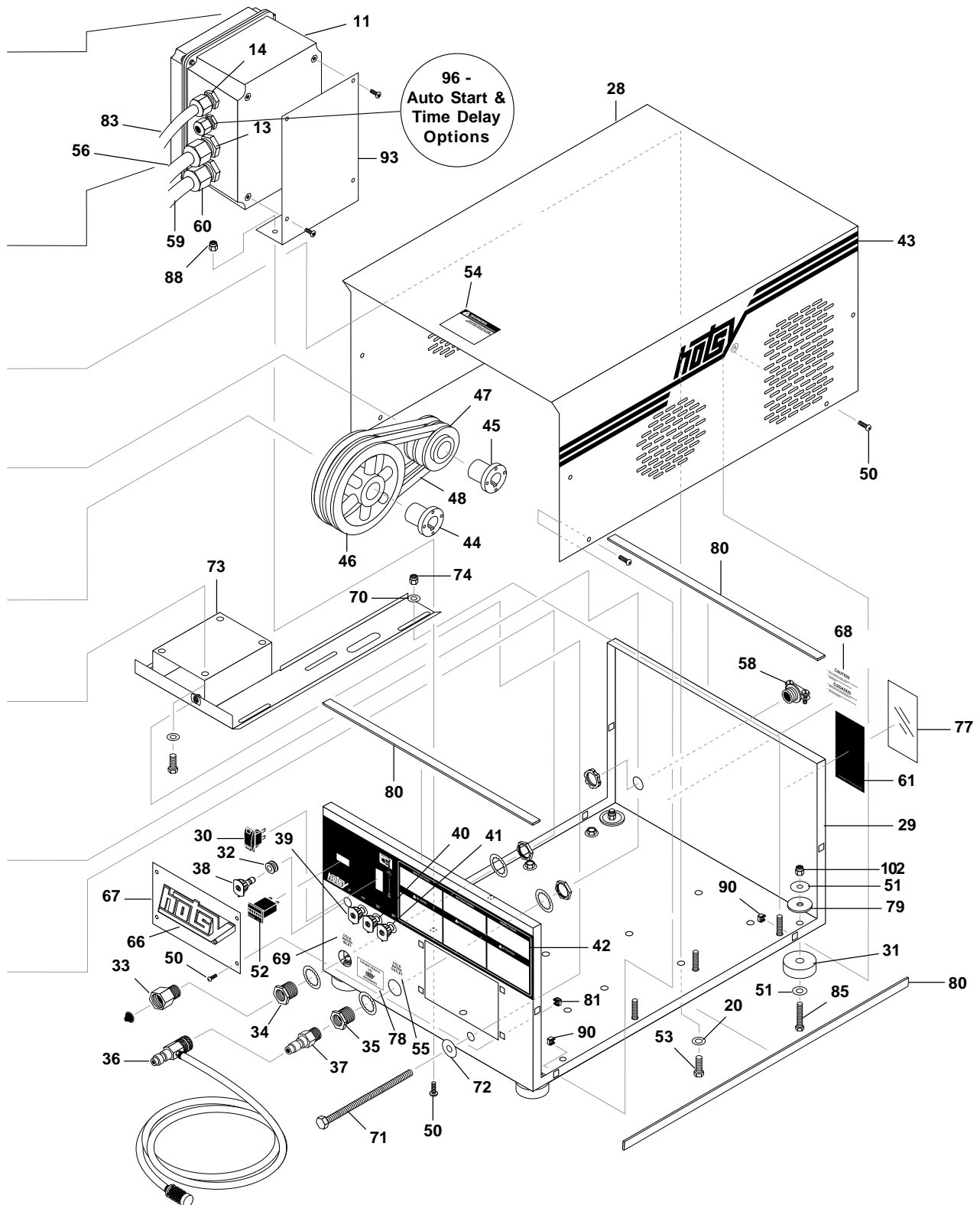
Refer to Troubleshooting Chart for low pressure. If, by referring to the chart, the trouble is found to be either the unloader or the pump, your next step is to determine whether in fact the unloader or the pump is the problem. This can be done by eliminating the unloader from the system and attaching the discharge hose directly to the pump. If high pressure is developed in this manner the pump is good, and the unloader needs to be repaired or replaced.

CAUTION: When using this procedure to test components, keep the spray gun open at all times.

1700 SERIES EXPLODED VIEW LEFT SIDE



1700 SERIES EXPLODED VIEW RIGHT SIDE



1700 SERIES -EXPLODED VIEW PARTS LIST

ITEM	PART NO.	DESCRIPTION	QTY	ITEM	PART NO.	DESCRIPTION	QTY
1	Unloader, See Specifications Pages 20-21			19	703146	Nut, 3/8" ESNA (All Models Except 1710)	4
	Unloader, See Specifications Pages 20-21				703155	Nut, 5/16" ESNA (1710)	4
	921579	Unloader, PA 8GPM@3650 PSI, VB8 W/Switch (Auto Start/Stop)	1	20	780453	Washer, 3/8", SAE, Flat (All Models Except 1710)	8
2	Pump, See Specifications Pages 20-21				780452	Washer, 5/16" SAE Flat (1710)	8
3	Motor, See Specifications Pages 20-21			21	877455	Nipple, 3/4" Pipe x 1/2" Pipe (1750, 1752, 1753, 1754, 1755)	1
4	867372	Hose, 1/2" Push On	2.5 ft		722774	Nipple, 1/2" Pipe x 3/8" Pipe (1710, 1720, 1722, 1723, 1724, 1725, 1730, 1732, 1733, 1734, 1735, 1740, 1742, 1743, 1744, 1745)	1
5	Transformer, See Specifications Pages 20-21			22	954710	Tee, 1/2" Female, Pipe	1
6	Fuse, See Specifications Pages 20-21			23	799419	Nipple, 1/2" JIC x 1/2" MPT Pipe	1
7	Fuse, See Specifications Pages 20-21			24	661355	Elbow, 1/2" JIC x 1/2", 90°	2
8	Contactor, See Specifications Pages 20-21			25	661357	Elbow, 1/2" JIC x 3/8" Steel (1710, 1720, 1722, 1723, 1724, 1725, 1730, 1732, 1733, 1734, 1735, 1740, 1742, 1743, 1744, 1745)	1
9	Overload, See Specifications Pages 20-21				644600	Elbow, 1/2" JIC x 1/2", 90° (1750, 1752, 1753, 1754, 1755)	1
10	800005	Din Rail, 35mm	4"	26	661354	Elbow, 1/2" x JIC x 3/8", Brass	1
		(Time Delay Option)	6"	27	722740	Bushing, 3/4" x 1/2" Pipe (1750, 1752, 1753, 1754, 1755)	1
11	616009	Box, Plastic, 10" x 8" x 6" w/Lid (All models except 1710)	1	28	630040	Cover, Hotsy 1700 Series	1
	220275	Box, Plastic, 8" x 8" x 4" w/Lid (1710)	1	29	630006	Base, Hotsy 1700 Series	1
12	616008	Bracket, Support for Elec Box	1	30	875858	Switch, Rocker, Carling w/Green Lens	1
13	876029	Strain Relief, LQ Tit (1710)	1		876321	Switch, Rocker, Red Face (Time Delay Only)	1
	903086	Locknut, 1/2" Conduit (1710)	1	31	615527	Pad, Soft Rubber, 50 Duro	4
	875473	▲ Strain Relief, 3/4" LQ Tite (1720, 1722, 1723, 1724, 1725, 1733, 1734, 1735, 1745, 1755)	1	32	859815	Grommet, Rubber, Nozzle Holder	4
	903087	▲ Locknut, 3/4" Conduit (1720, 1722, 1723, 1724, 1725, 1733, 1734, 1735, 1745, 1755)	1	33	801139	Swivel, 1/2" MP x 3/4" GHF w/Strainer	1
	6-05170	Strain Relief, 3/4" (1730, 1732, 1743, 1744, 1754)	1	34	631008	Connector, 1/2" Anchor	1
	903087	▲ Locknut, 3/4" (1730, 1732, 1743, 1744, 1754)	1	35	631007	Connector, 3/8" Anchor	1
	6-051930	Connector, 1" (1740, 1742, 1750, 1752)	1	36	729404	Downstream Injector Assy., Non Adj #3	1
	6-05182	▲ Locknut, 1" (1740, 1742, 1750, 1752)	1	37	844806	Nipple, 3/8" x 3/8" NPT ST Male	1
14	876029	Strain Relief, Strt, LQ Tite, Med	1	38	799000	Nozzle, SAQCMEG 0004 Red (1730, 1732, 1733, 1734, 1735)	1
	903086	▲ Locknut, 1/2" Conduit	1		799004	Nozzle, SAQCMEG 0006 Red (1720, 1722, 1723, 1724, 1725)	1
15	4-02047722	Hose, 3/8" x 25", 2 Wire, Pressure Loop	1				
16	2-3008150	Pump Protector, 1/2" PTP, 190° (1750 Series)	1				
	2-30081	Pump Protector, 3/8" 190°	1				
17	661356	Elbow, 1/2" JIC, 3/8" Fem, 90°	1				
18	661357	Elbow, 1/2" JIC, 3/8", 90°	1				

1700 SERIES -EXPLODED VIEW PARTS LIST (CON'T)

ITEM	PART NO.	DESCRIPTION	QTY	ITEM	PART NO.	DESCRIPTION	QTY
38	799003	Nozzle, SAQCMEG 00055 Red (1710, 1740, 1742, 1743, 1744, 1745)	1	54	646663	Label, Warning, Exposed Pulley	1
	799006	Nozzle, SAQCMEG 0007 Red (1750, 1752, 1753, 1754, 1755)	1	55	646665	Label, Cold Water Outlet	1
39	799012	Nozzle, SAQCMEG 1504 Yellow (1730, 1732, 1733, 1734, 1735)	1	56	630814	Cord, GFCI, 230V, 40A, 8-3 Cord w/Plug (1730,1732)	1
	799016	Nozzle, SAQCMEG 1506 Yellow (1720, 1722, 1723, 1724, 1725)	1		825985	Service Cord 12/4 (1723, 1724, 1725, 1734, 1735,1745, 1755)	10 ft.
	799015	Nozzle, SAQCMEG 15055 Yellow (1710, 1740, 1742, 1743, 1744, 1745)	1		630936	Service Cord 10/4 (1733)	10 ft.
	799018	Nozzle, SAQCMEG 1507 Yellow (1750, 1752, 1753, 1754, 1755)	1		645893	Service Cord 8/4 (1743, 1744 1753,1754)	10 ft.
40	799144	Nozzle, SAQCMEG 2504 Green (1730, 1732, 1733, 1734, 1735)	1		631004	GFCI Cord 230V/30 Amp, 10-3 Cord (1720, 1722)	1
	799392	Nozzle, SAQCMEG 2506 Green 1720, 1722, 1723, 1724, 1725)	1		981000	GFCI Cord 120V/20 Amp w/36', 12-3 Cord (1710)	36 ft.
	190004	Nozzle, SAQCMEG 25055 Green (1710, 1740, 1742, 1743, 1744, 1745)	1		630815	Cord, GFCI, 230V, 50A, 37' Cord w/Plug (1740,1742,1750,1752)	1
	799198	Nozzle, SAQCMEG 2507 Green (1750, 1752, 1753, 1754, 1755)	1	57	646359	Label, GFCI	1
41	799024	Nozzle, SAQCMEG 4004, White (1730, 1732, 1733, 1734, 1735)	1	58	826029	Strain Relief 1"	1
	799028	Nozzle, SAQCMEG 4006, White (1720, 1722, 1723, 1724, 1725)	1	59	825989	Service Cord 12/3 (1710)	4.25 ft.
	799027	Nozzle, SAQCMEG 40055 White (1710, 1740, 1742, 1743, 1744, 1745)	1		825985	Service Cord 12/4 (1723,1724, 1735, 1725, 1734, 1745, 1755)	3.33 ft.
	799030	Nozzle, SAQCMEG 4007 White (1750, 1752, 1753, 1754, 1755)	1		826010	Service Cord 10/3 (1722,1720)	3.33 ft.
42	630013	Label, Hotsy, 1700 Series	1		826020	Service Cord 8/3 (1730,1732)	3.33 ft.
43	834086	Label, Hotsy Logo Stripe	2		630936	Service Cord 10/4 (1733)	3.33 ft.
44	Bushings, See Specifications Pages 20-21				645891	Service Cord 6/3 (1740,1742,1750,1752)	3.33 ft.
45	Bushings, See Specifications Pages 20-21				645893	Service Cord 8/4 (1743, 1744, (1753,1754)	3.33 ft.
46	Pulley, See Specifications Pages 20-21			60	875473	Strain Relief, Strt, LQ Tite 3234 Large (1710, 1720, 1722, 1723, 1724, 1725, 1730, 1732, 1733, 1744, 1755)	1
47	Pulley, See Specifications Pages 20-21				903087	▲ Locknut, 3/4" Conduit (1720, 1722, 1723, 1724, 1725, 1730, 1732, 1733, 1734, 1735, 1745, 1755)	1
48	Belt, See Specifications Pages 20-21				826043	Strain Relief, 3/4" (1734, 1735)	1
49	661426	Swivel, 1/2" JIC Fem, 3/8" Male	1		876029	Strain Relief LQ Tite (1710)	1
50	630009	Screw, 1/4"x1/2" BH SOC ES	14		903086	▲ Locknut, 1/2" Conduit (1710)	1
51	936438	Washer, 3/8" x 1" Steel	4		6-05170	Strain Relief, 3/4" (1740, 1742, 1743, 1744, 1750, 1752, 1753, 1754)	1
52	886541	Hour Meter, Hobbs, 115 VAC	1				
53	612984	Bolt, 3/8" x 1", NC HH (All Models Except 1710)	4				
	612950	Bolt, 5/16" x 1" NC HH (1710)	4				

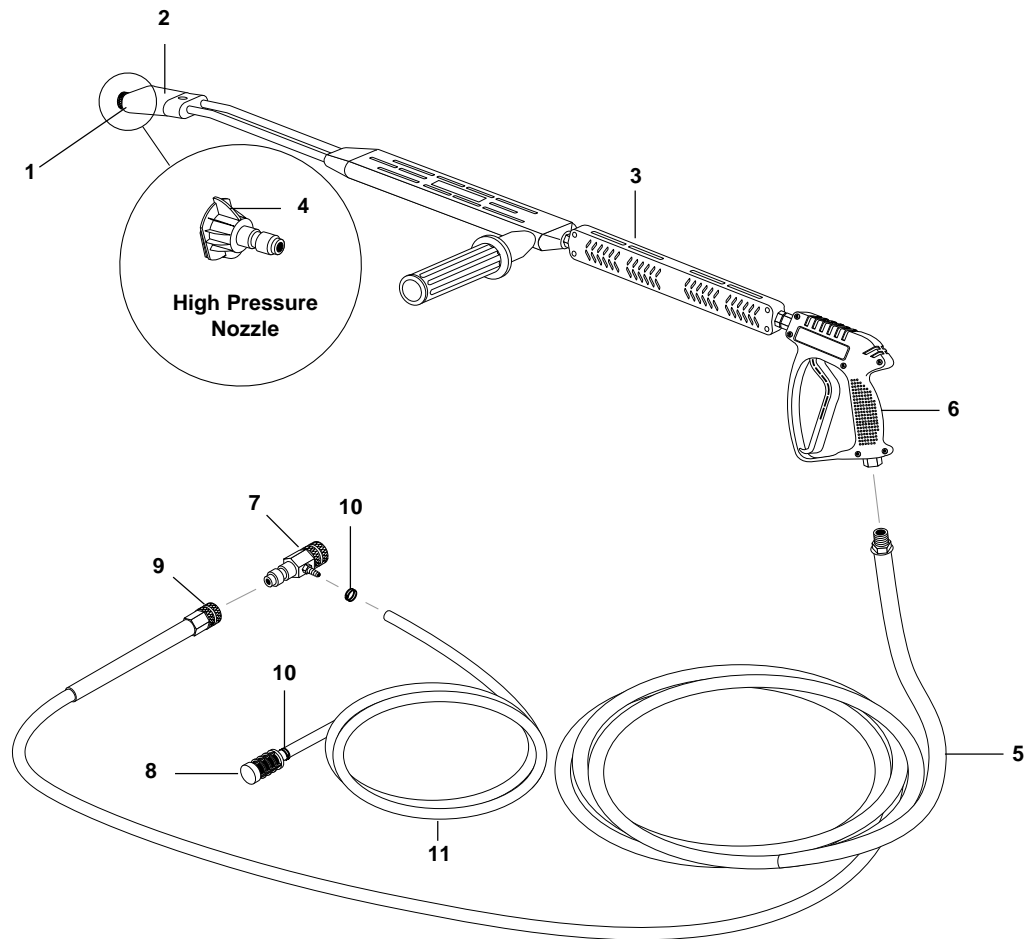
1700 SERIES - EXPLODED VIEW PARTS LIST (CON'T)

ITEM	PART NO.	DESCRIPTION	QTY
60	903087	▲ Locknut, 3/4" Conduit (1740, 1742, 1743, 1744, 1750, 1752, 1753, 1754)	1
61	646648	Label, Intended For Indoor Use	1
62	661357	Elbow, 1/2" JIC, 3/8", Steel (Auto Start Option)	1
63	661354	Elbow, 1/2" JIC, 3/8", Brass (Auto Start Option)	1
64	644802	Elbow, 3/8" Street (Auto Start Option)	2
65	661426	Swivel, 1/2" JIC Fem x 3/8" Male (Auto Start Option)	1
66	834083	Label, Hotsy, White	1
67	630007	Cover, Access Hole	1
68	444467	Label, Caution	1
69	646666	Label, Cold Water Inlet	1
70	780452	Washer, 5/16" Flat	4
71	90-1027461	Bolt, 1/2" x 8" NC HH	1
72	780455	Washer, 1/2" Flat	1
73	95-0710375546	Slider, Pump	1
74	703155	Nut, 5/16" ESNA	4
75	898111	Nipple, 1/2" JIC x 3/8" Female (Auto Start Option)	1
76	815220	Bushing, 1/2" x 3/8" Steel (Auto Start Option, 1750, 1752, 1753, 1754, 1755)	1
77	10-9999	Clear Lexan	1
78	834159	Detergent label	1
79	830587	Bumper Pad	4
80	630011	Weather Stripping	7 ft.
81	630008	Nut, 1/4" Square	4
82	2-1105	Swivel, 1/2" JIC Fem. Push-On	4
83	6-0101	Cord, 16-3 Service	2.5 ft.
	826009	Cord, 16-4 Service (Auto Start/ Time Delay Option)	2.5 ft.
	826011	▲ Cord, 16-2 Service	.75 ft.
84	799484	Nut, 10/32" Keps (1710) (All Models Except 1710)	4 10
85	612985	Bolt, 3/8" x 1-1/2" NC HH	4
86	876025	Screw, 10/32" x 1/2" Black (All Models Except 1710)	10
87	876026	Screw, 10/32" x 1-1/4" (1710) (Auto Start Option, All Models Except 1710)	2 1

ITEM	PART NO.	DESCRIPTION	QTY
88	703185	Nut, 1/4" ESNA NC	2
89	185300	Cage Nut, 10/32" x 16 Gauge (All Models Except 1710)	6
90	799488	Cage Nut, 1/4" x 12 Gauge	8
91	936688	Washer, 3/8" x 1-1/2" Fender	4
92	646155	Label, Ground	1
93	95-07290068	Standoff, Electrical Box (All Models Except 1710)	1
94	6-051532	Strain Relief, 3/4" (1710)	1
	703149	▲ Locknut, 3/4" (1710)	1
	875473	Strain Relief, 3/4" (1720, 1722, 1723, 1724, 1725, 1734, 1735)	1
	703149	▲ Locknut, 3/4" (1720, 1722, 1723, 1724, 1725, 1734, 1735)	1
	6-051700	Strain Relief, 1" (1730, 1732, 1733, 1745, 1755)	1
	6-05182	▲ Locknut, 1" (1730, 1732, 1733, 1745, 1755)	1
	6-051701	Strain Relief 1" (1740, 1742, 1743, 1744, 1750, 1752, 1753, 1754)	1
	6-05182	▲ Locknut, 1" (1740, 1742, 1743, 1744, 1750, 1752, 1753, 1754)	1
95	891010	Timer, Solid State, 120V 5-60 Min. Adjust. (Auto Start Option)	1
96	876032	Strain Relief, 1/2" (Auto Start/ Time Delay Option)	1
	903086	▲ Locknut, 1/2" (Auto Start/Time Delay Option)	1
97	829596	Plug, 3/8" Gas Tap (Time Delay Option, 1720, 1722, 1723, 1724, 1725, 1730, 1732, 1733, 1734, 1735, 1740, 1742, 1743, 1744, 1745)	1
	829663	Plug, 3/8" Gas Tap (Time Delay Option, 1710)	1
98	875651	Switch, Pressure Block (Time Delay Option)	1
99	876320	Timer, Multi-Function (Time Delay Option)	1
100	815220	Bushing, 1/2" x 3/8" Steel (Time Delay Option, 1750, 1752, 1753, 1754, 1755)	1
101	644802	Elbow, 3/8" Street (Time Delay Option, 1750, 1752, 1753, 1754, 1755)	1
102	703146	Nut, 3/8" ESNA NC	4

▲ Not Shown

HOSE & SPRAY GUN ASSEMBLY

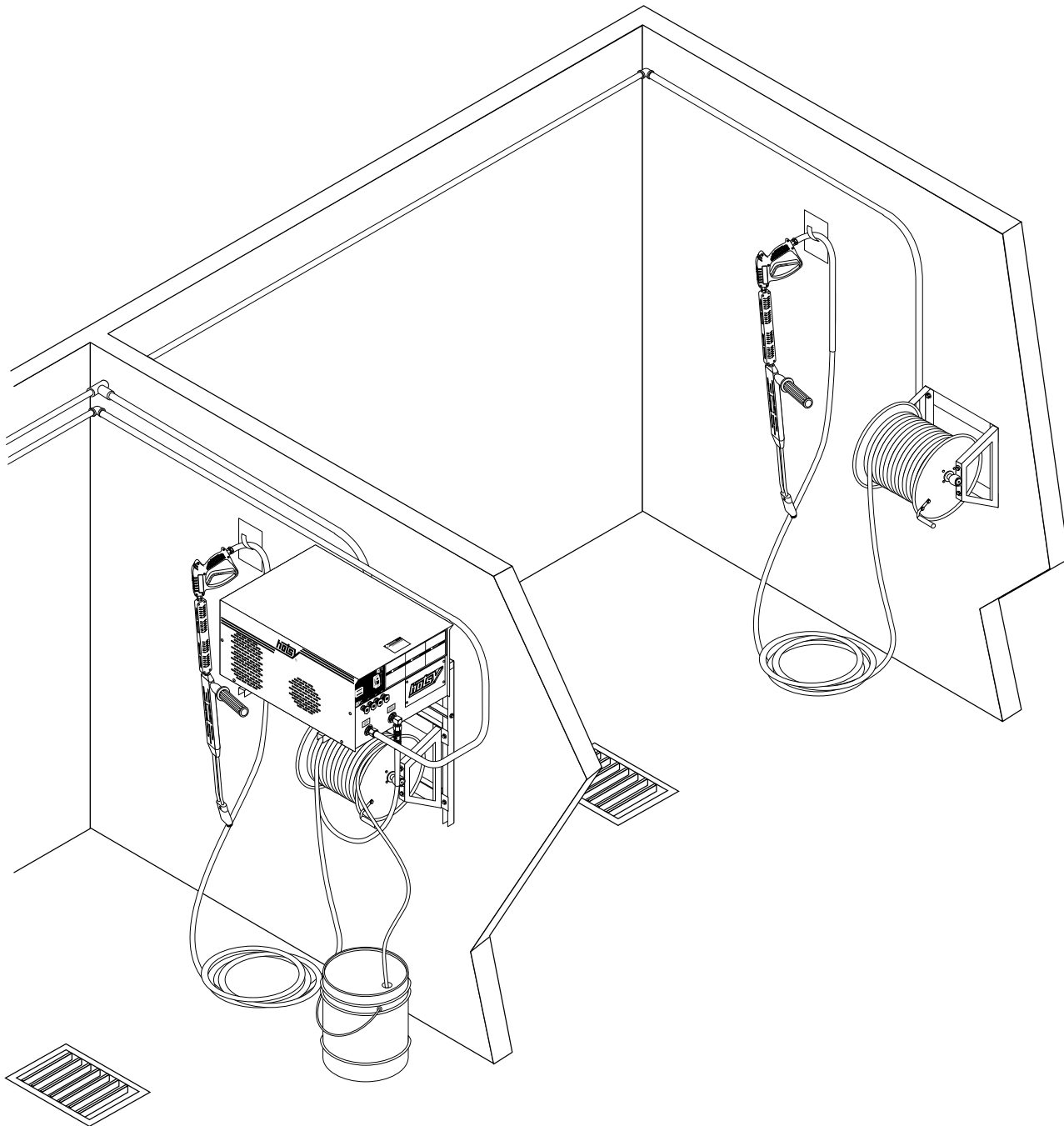


ITEM	PART NO.	DESCRIPTION	QTY
1	826170	Coupler, 1/4" Male	1
	728733	▲ Quick Coupler O-Ring, Small	1
2	4-06540	Nozzle Only, 1/8", Soap	1
3	878920	Wand, SS, VP, AL344 w/Coupler & Soap Nozzle	1
4	See Nozzles pages 12-13		
5	707438	Hose, 3/8" x 50', 1 Wire, Blue w/ Coupler	1

ITEM	PART NO.	DESCRIPTION	QTY
6	860447	Spray Gun, Shut-off, Series 2000	1
7	3-12021	Detergent Injector, Non-Adjust 3-5 GPM	1
8	875582	Strainer, 1/4" Hose Barb	1
9	826176	Coupler, 3/8" Female	1
	728734	▲ Quick Coupler O-Ring, Large	1
10	823988	Clamp, Hose, UNI .46 - .54	2
11	961506	Tube, 1/4"x1/2" Clear Vinyl	6 ft.

▲ Not Shown

MULTI-ROOM INSTALLATION



TROUBLESHOOTING

PROBLEM	POSSIBLE CAUSE	SOLUTION
LOW OPERATING PRESSURE	Faulty pressure gauge	Install new gauge.
	Insufficient water supply	Use larger supply hose; clean filter at water inlet.
	Old, worn or incorrect spray nozzle	Match nozzle number to machine and/or replace with new nozzle.
	Belt slippage	Tighten or replace; use correct belt.
	Plumbing or hose leak	Check plumbing system for leaks. Retape leaks with teflon tape.
	Faulty or misadjusted unloader valve (Where applicable)	Call technical support.
	Worn packing in pump	Install new packing kit.
	Fouled or dirty inlet or discharge valves in pump	Clean inlet and discharge valves.
	Worn inlet or discharge valves	Replace with valve kit.
	Obstruction in spray nozzle	Remove obstruction.
	Leaking pressure control valve (where applicable)	Rebuild or replace as needed.
	Insufficient power supply	Check voltage.
FLUCTUATING PRESSURE	Valves worn	Check and replace if necessary.
	Blockage in valve	Check and clean out if necessary.
	Pump sucking air	Check water supply and suction line for air seepage at joints.
	Worn piston packing	Check and replace if necessary.
PRESSURE LOW AFTER PERIOD OF NORMAL USE	Nozzle worn	Check and replace if necessary.
	Inlet or discharge valves worn	Check and replace if necessary.
	Inlet or discharge valves blocked	Check and clean if necessary.
	Unloader valve seat worn	Check and replace if necessary.
PUMP NOISY	Air in suction line	Check water supply and connections on suction line.
	Broken or weak inlet or discharge valve springs	Check and replace if necessary.
	Foreign matter in valves	Check and clean if necessary.
	Worn bearings	Check and replace if necessary.
	Excessive temperature of liquid	Reduce to below 75° C (180°F).
PRESENCE OF WATER IN PUMP OIL	Oil seal worn	Check and replace if necessary.
	High humidity in air	Check and change oil twice as often.
	Piston packing worn	Check and replace if necessary.
MOTOR STRAINS UNDER LOAD (CONTINUED ON NEXT PAGE)	Faulty motor	Send to nearest Baldor repair center.
	Incorrect spray nozzle	Install proper nozzle size (see serial plate for proper size).
	Obstruction in spray nozzle	Remove obstruction.

TROUBLESHOOTING

PROBLEM	POSSIBLE CAUSE	SOLUTION
MOTOR STRAINS UNDER LOAD (CONTINUED FROM PREVIOUS PAGE)	Misadjusted unloader valve	Call technical support.
	Pump low or out of oil	Check oil level.
OIL SQUIRTS OUT OF OIL CAP ON PUMP	Pump over filled with oil	Maintain oil level halfway up on the sight glass at rear of pump or at top of notch on dipstick (where applicable).
PUMP RUNNING NORMALLY BUT PRESSURE OUTPUT LOW	Pump sucking air	Check water supply and possibility of air seepage.
	Valves sticking	Check and clean or replace if necessary.
	Unloader valve seat faulty	Check and replace if necessary.
	Nozzle incorrectly sized	Check and replace if necessary (See serial plate for proper size).
	Worn piston packing	Check and replace if necessary.
WATER DRIPPING FROM UNDER PUMP	Piston packing worn	Check and replace if necessary.
	O-Ring plunger retainer worn	Check and replace if necessary.
	Cracked piston	Check and replace if necessary.
OIL DRIPPING	Oil seal worn	Check and replace if necessary.
EXCESSIVE VIBRATION IN DELIVERY LINE	Irregular functioning of the valves	Check and replace if necessary.
SYSTEM WILL NOT START	Motor overload tripped	Check and reset.
	Pressure switch faulty (time delay only)	Check, clean or replace.
	Timer faulty (time delay only)	Check and replace.
MOTOR "HUMS" BUT DOES NOT TURN	Electric motor single phasing	Check for blown fuse or loose power line.
SYSTEM WILL NOT STOP	Pressure switch faulty	Check clean or replace.
	Timer faulty	Check and replace.
SYSTEM STOPS AFTER APPROXIMATELY FOUR (4) SECONDS AND THEN RESTARTS	Faulty pressure switch	Check and replace.
	Leak at discharge line	Check for leak at hose and spray gun.
MACHINE WILL NOT START WHEN SPRAY GUN TRIGGER IS PULLED	Loss of electrical power	Check circuit breaker.
	Faulty on/off switch, pressure switch, timer or magnetic contactor	Test and replace as needed.
MACHINE DOES NOT TURN OFF AFTER FOUR (4) SECONDS WHEN SPRAY GUN IS RELEASED	Test power control switch and solid state timer faulty	Replace the defective component.

IMPORTANT

If the pressure washer demonstrates other symptoms or the corrective actions listed do not correct the problem, contact the local authorized Hotsy Service Center. The Hotsy Service Center can be identified by visiting www.hotsy.com or by calling 1-800-525-1976.

PREVENTATIVE MAINTENANCE

This pressure washer was produced with the best available materials and quality craftsmanship. However, you as the owner, have certain responsibilities for the correct care of the equipment. Attention to regular preventative maintenance procedures will assist in preserving the performance of your equipment. Contact your Hotsy dealer for maintenance. Regular preventative maintenance will add many hours to the life of your pressure washer. Perform maintenance more often under severe conditions.

MAINTENANCE SCHEDULE		
Pump Oil	Inspect	25 Hours or Weekly
	Change	Yearly
Check Valve Clearance		Yearly
Water Filter	Inspect	Every 6 Hours or Daily
	Clean	Yearly

OIL CHANGE RECORD

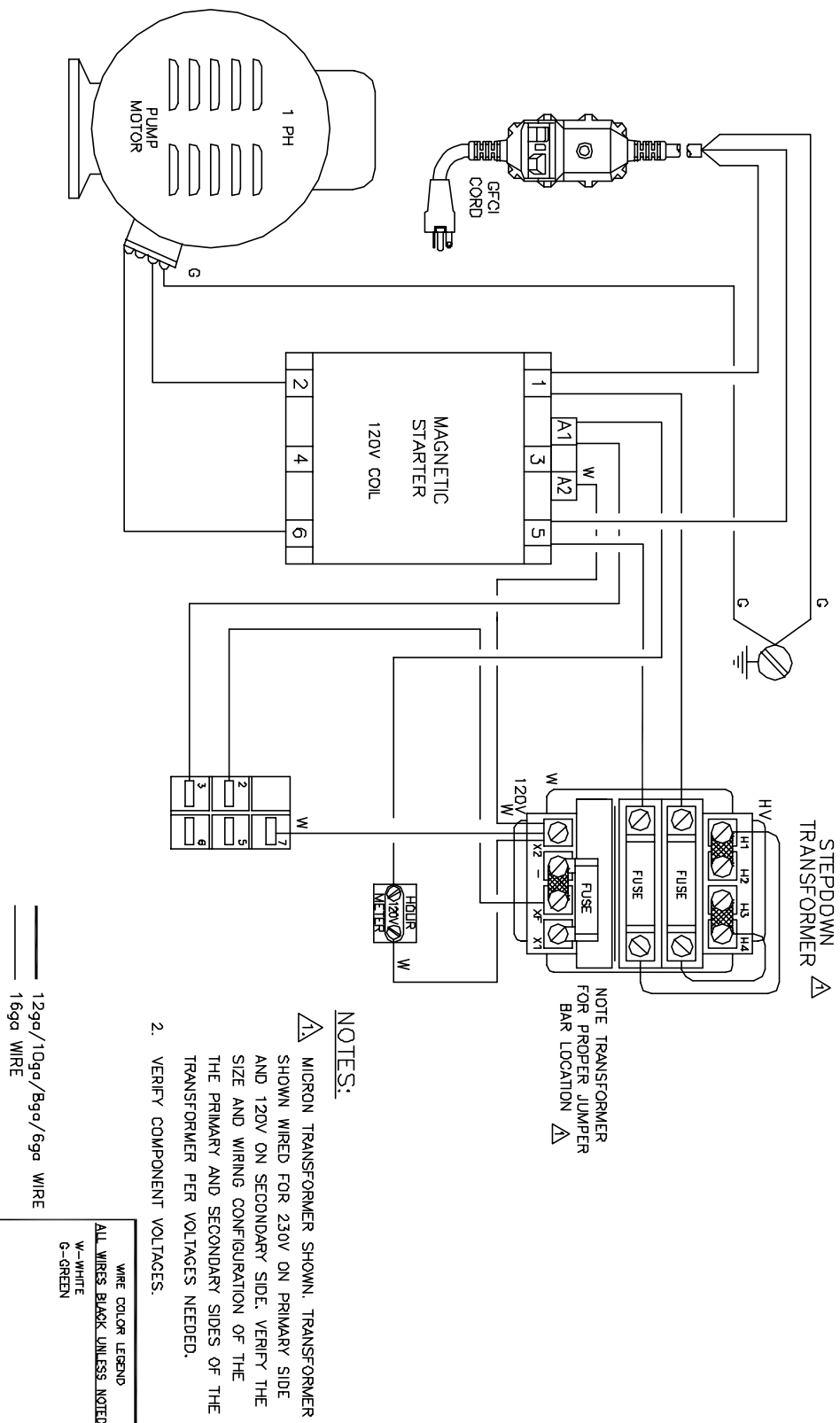
Check pump oil level before first use. Change pump oil after first 50 hours and every month or 500 hours thereafter. Use SAE 30 weight oil.

Date Oil Changed Month/Day/Year	Estimated Operating Hours Since Last Oil Change

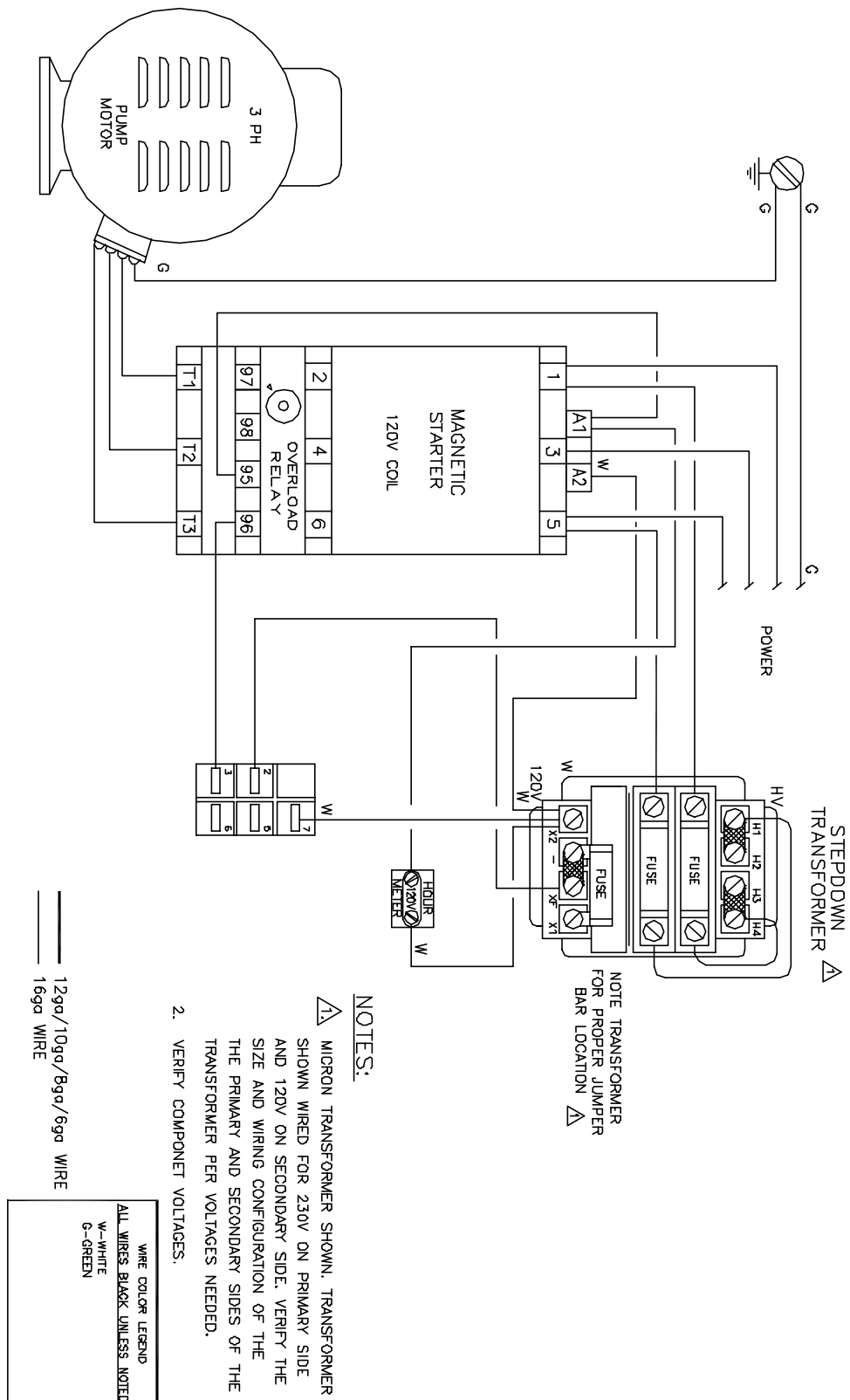
Date Oil Changed Month/Day/Year	Estimated Operating Hours Since Last Oil Change

Model#	Motor	Motor#	Unloader	Pump	Pump#	Pump	Pulley#	Motor	Motor	Pump
	HP					Pulley		Pulley	Pulley#	Bushing
1710	2	5-1047	5-3315	HC340AR	5-1865	AK 74H	5-40107401	AK26 x 5/8	5-40102658	24MM
1720	6	5-10401	5-3315	H300AR	5-1864	2BK90H	5-40509001	2BK62H	5-40506201	22MM
1722	6	5-10402	5-3315	H300AR	5-1864	2BK90H	5-40509001	2BK62H	5-40506201	22MM
1723	6	5-10111	5-3315	H300AR	5-1864	2BK90H	5-40509001	2BK62H	5-40506201	22MM
1724	6	5-1011	5-3315	H300AR	5-1864	2BK90H	5-40509001	2BK62H	5-40506201	22MM
1725	6	5-1011	5-3315	H300AR	5-1864	2BK90H	5-40509001	2BK62H	5-40506201	22MM
1730	7.5	5-1013	5-3314	H300AR	5-1864	2BK80H	5-40508001	2BK50H	5-40505001	22MM
1732	7.5	5-10131	5-3314	H300AR	5-1864	2BK80H	5-40508001	2BK50H	5-40505001	22MM
1733	7.5	5-10144	5-3314	H300AR	5-1864	2BK80H	5-40508001	2BK50H	5-40505001	22MM
1734	7.5	5-10145	5-3314	H300AR	5-1864	2BK80H	5-40508001	2BK50H	5-40505001	22MM
1735	7.5	5-10145	5-3314	H300AR	5-1864	2BK80H	5-40508001	2BK50H	5-40505001	22MM
1740	10	5-1016	5-3314	HC500AR	5-1866	2BK80H	5-40508001	2BK80H	5-40508001	22MM
1742	10	5-10161	5-3314	HC500AR	5-1866	2BK80H	5-40508001	2BK80H	5-40508001	22MM
1743	10	5-10151	5-3314	HC500AR	5-1866	2BK80H	5-40508001	2BK80H	5-40508001	22MM
1744	10	5-1018	5-3314	HC500AR	5-1866	2BK80H	5-40508001	2BK80H	5-40508001	22MM
1745	10	5-1018	5-3314	HC500AR	5-1866	2BK80H	5-40508001	2BK80H	5-40508001	22MM
1750	10	5-1016	5-3314	HC950AR	5-1867	2BK90H	5-40509001	2BK57H	5-40505701	25MM
1752	10	5-10161	5-3314	HC950AR	5-1867	2BK90H	5-40509001	2BK57H	5-40505701	25MM
1753	10	5-10151	5-3314	HC950AR	5-1867	2BK90H	5-40509001	2BK57H	5-40505701	25MM
1754	10	5-1018	5-3314	HC950AR	5-1867	2BK90H	5-40509001	2BK57H	5-40505701	25MM
1755	10	5-1018	5-3314	HC950AR	5-1867	2BK90H	5-40509001	2BK57H	5-40505701	25MM

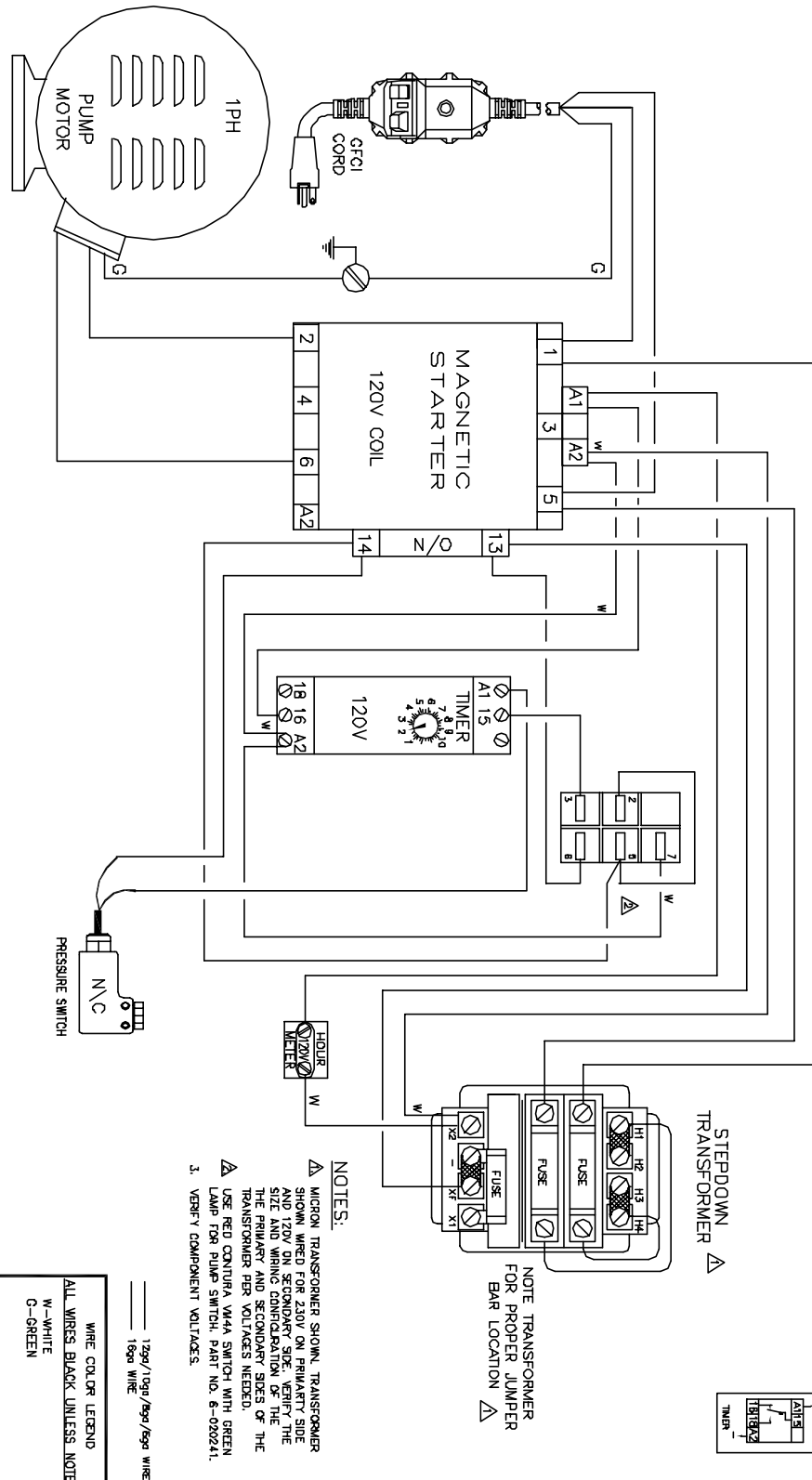
	Pump	Motor	Motor	Belt	Belt#	Contactor	Overload	Primary	Secondary	Trans-
Model#	Bushing#	Bushing	Bushing#				Fuse	Fuse		Former
1710	5-512024	N/A	N/A	AX 36	5-602036	6-4031	NA	NA	NA	NA
1720	5-5120220	H x 1-1/8"	5-511113	BX46	5-604046	6-4018	N/A	6-02294	6-022970	6-60101
1722	5-5120220	H x 1-1/8"	5-511113	BX46	5-604046	6-4018	N/A	6-02294	6-022970	6-60141
1723	5-5120220	H x 1-1/8"	5-511113	BX46	5-604046	6-4013	6-5011	6-02294	6-022970	6-60141
1724	5-5120220	H x 1-1/8"	5-511113	BX46	5-604046	6-4010	6-5011	6-02294	6-022970	6-60101
1725	5-5120220	H x 1-1/8"	5-511113	BX46	5-604046	6-4004	6-5009	6-02295	6-022970	6-60101
1730	5-5120220	H x 1-3/8"	5-511138	BX42	5-604042	6-4018	6-5015	6-02294	6-022970	6-60101
1732	5-5120220	H x 1-3/8"	5-511138	BX42	5-604042	6-4018	6-5015	6-02294	6-022970	6-60141
1733	5-5120220	H x 1-3/8"	5-511138	BX42	5-604042	6-4013	6-5013	6-02294	6-022970	6-60141
1734	5-5120220	H x 1-3/8"	5-511138	BX42	5-604042	6-4010	6-5012	6-02294	6-022970	6-60101
1735	5-5120220	H x 1-3/8"	5-511138	BX42	5-604042	6-4004	6-5009	6-02295	6-022970	6-60101
1740	5-5120220	H x 1-3/8"	5-511138	BX46	5-604046	6-4021	6-5016	6-02294	6-022970	6-60101
1742	5-5120220	H x 1-3/8"	5-511138	BX46	5-604046	6-4021	6-5016	6-02294	6-022970	6-60141
1743	5-5120220	H x 1-3/8"	5-511138	BX46	5-604046	6-4018	6-5014	6-02294	6-022970	6-60141
1744	5-5120220	H x 1-3/8"	5-511138	BX46	5-604046	6-4013	6-5013	6-02294	6-022970	6-60101
1745	5-5120220	H x 1-3/8"	5-511138	BX46	5-604046	6-4007	6-5011	6-02295	6-022970	6-60101
1750	5-512025	H x 1-3/8"	5-511138	BX43	5-604043	6-4021	6-5016	6-02294	6-022970	6-60101
1752	5-512025	H x 1-3/8"	5-511138	BX43	5-604043	6-4021	6-5016	6-02294	6-022970	6-60141
1753	5-512025	H x 1-3/8"	5-511138	BX43	5-604043	6-4018	6-5014	6-02294	6-022970	6-60141
1754	5-512025	H x 1-3/8"	5-511138	BX43	5-604043	6-4013	6-5013	6-02294	6-022970	6-60101
1755	5-512025	H x 1-3/8"	5-511138	BX43	5-604043	6-4007	6-5011	6-02295	6-022970	6-60101



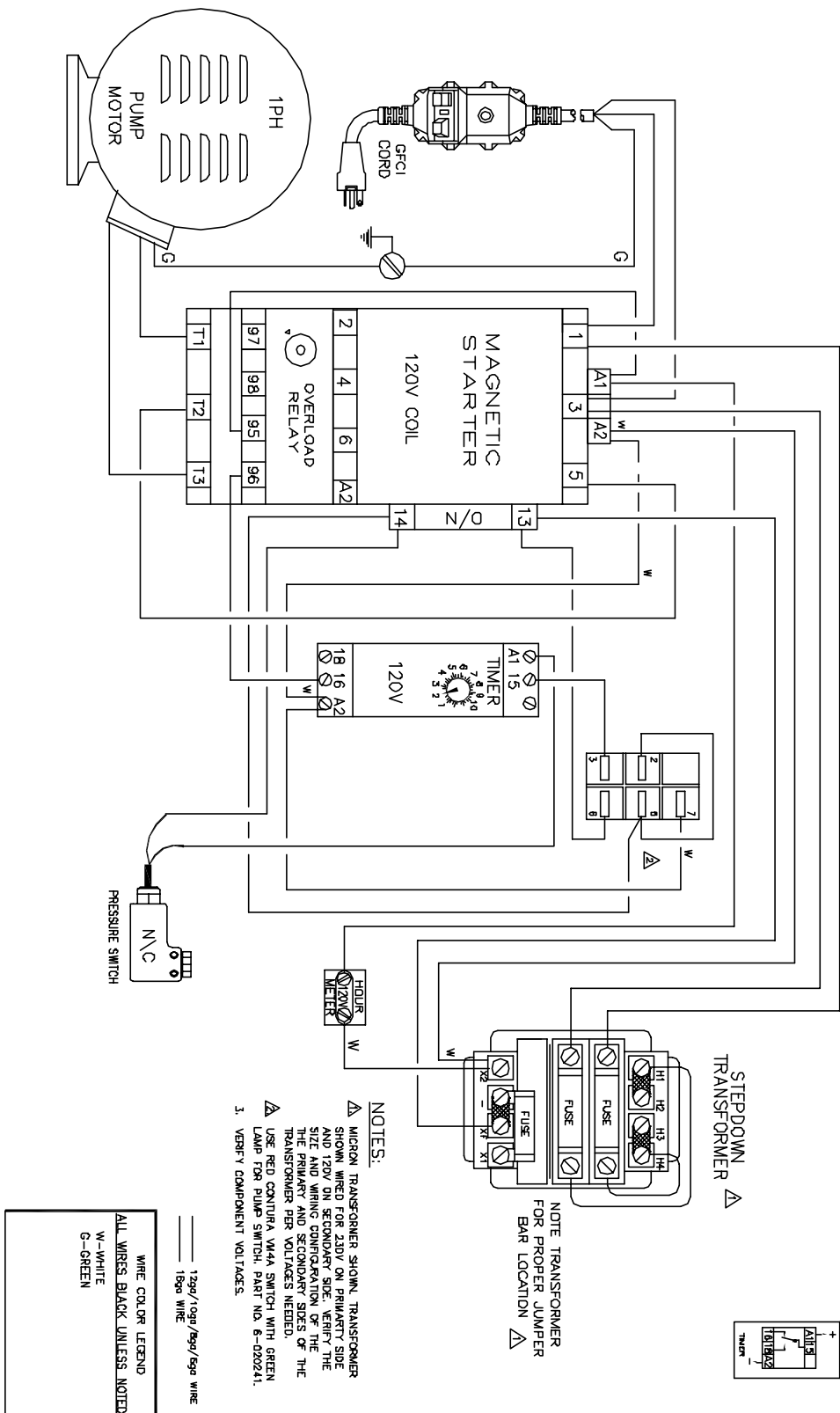
Wiring Diagram - Models 1720 and 1722



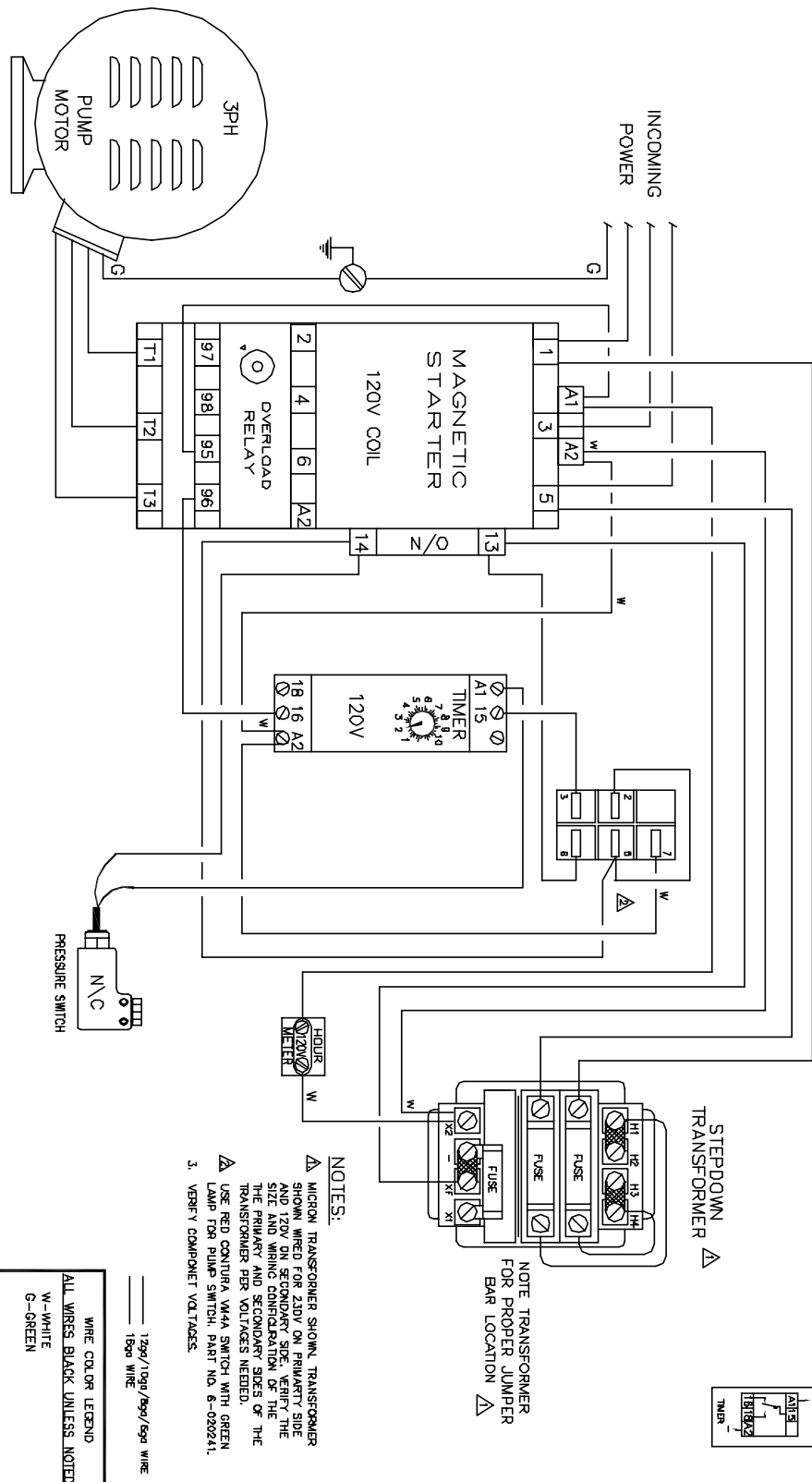
Wiring Diagram - Models 1723, 1724, 1725, 1733, 1734, 1735, 1743, 1744, 1745, 1753, 1754, 1755



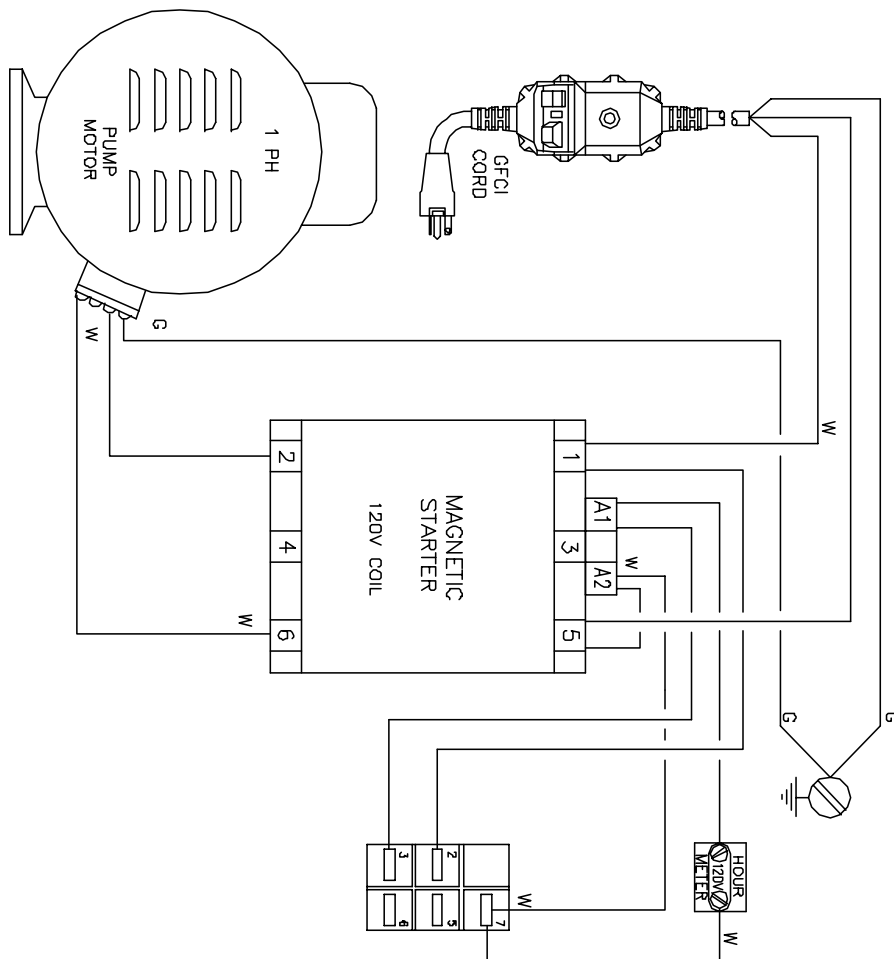
Wiring Diagram - Models 1720 and 1722 w/Time Delay Shutdown



Wiring Diagram - Models 1730, 1732, 1740, 1742, 1750, 1752 w/Time Delay Shutdown



Wiring Diagram - Models 1723,1724,1725,1733,1734,1735,1743,1744,1745,1753,1754,1755 w/Time Delay Shutdown



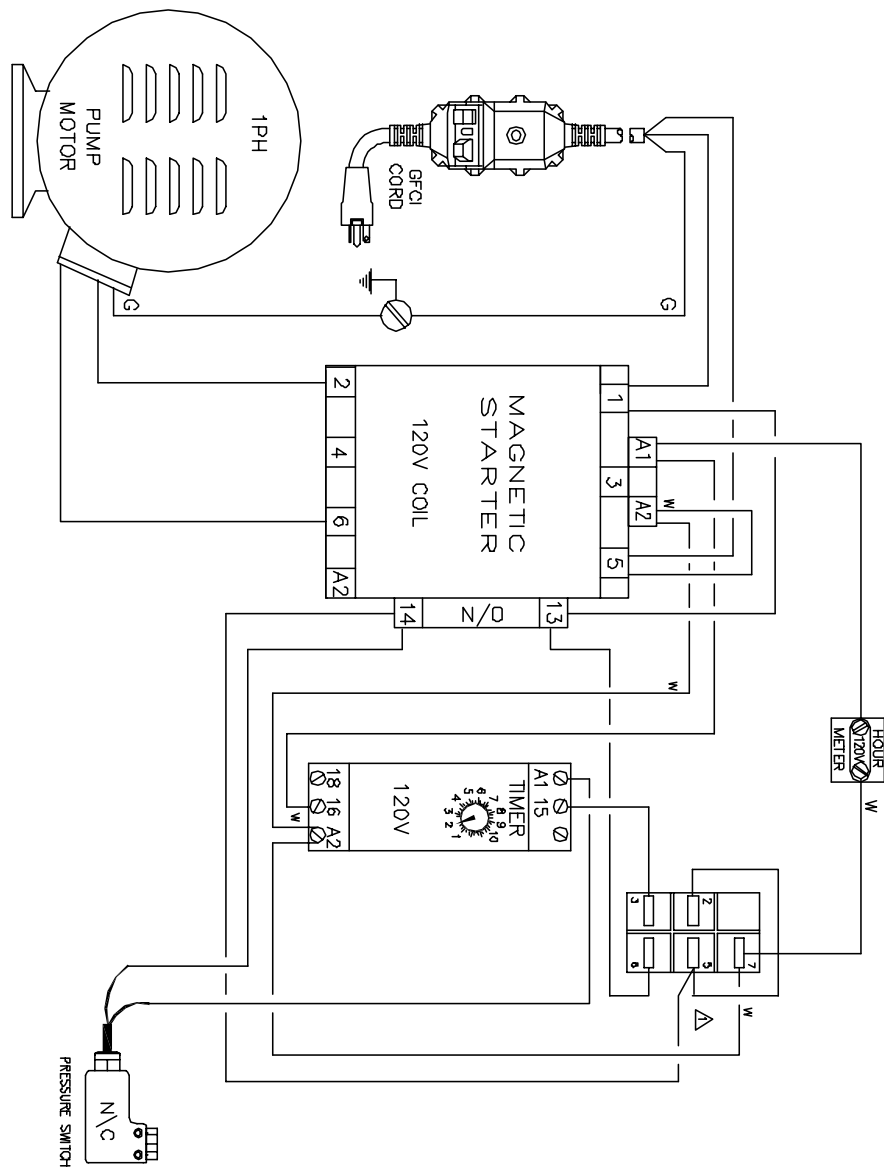
NOTES:

1. VERIFY COMPONENT VOLTAGES.

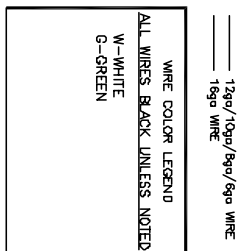
12ga/10ga/8ga/6ga WIRE
16ga WIRE

WIRE COLOR LEGEND
ALL WIRES BLACK UNLESS NOTED
W-WHITE
G-GREEN

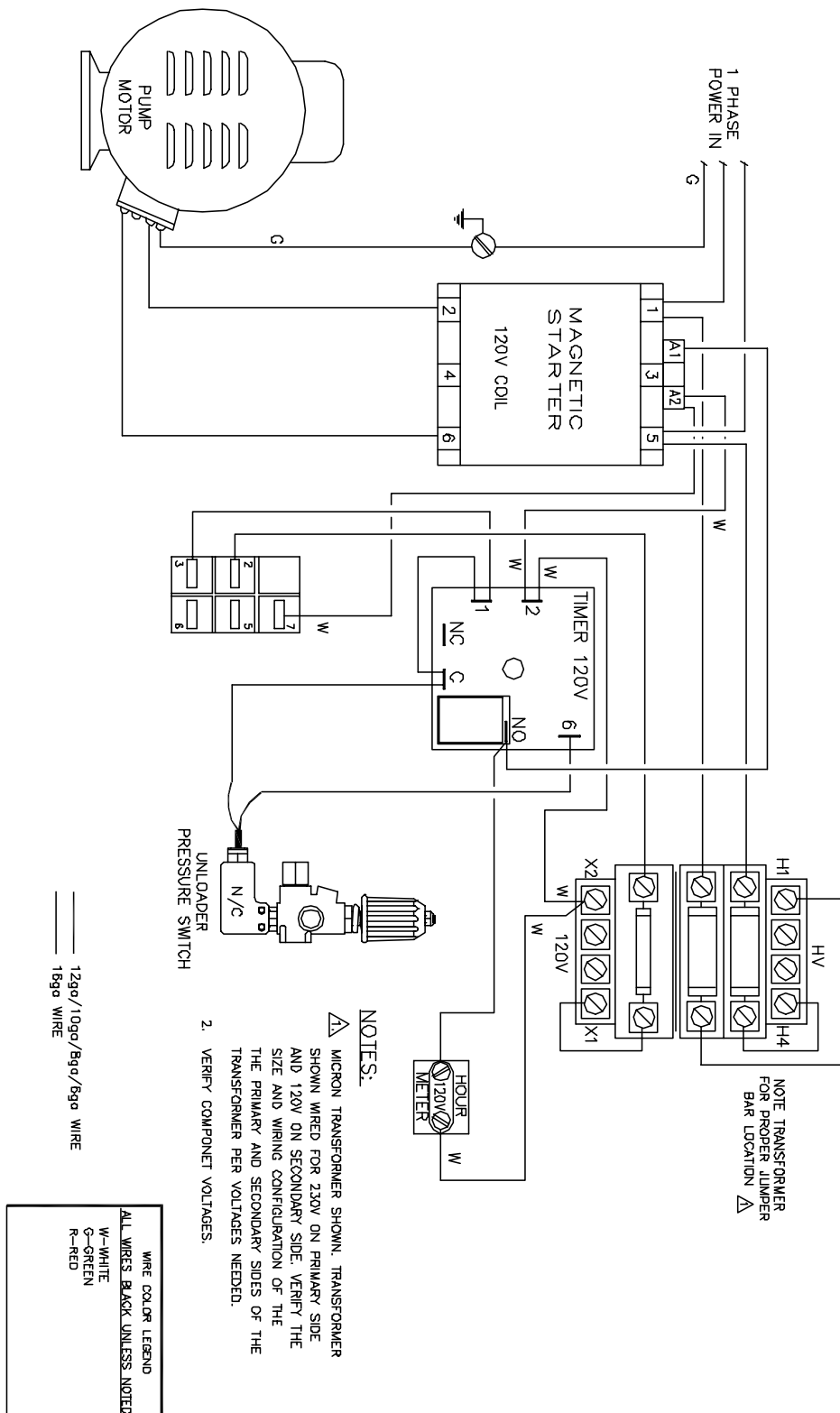
Wiring Diagram - Model 1710



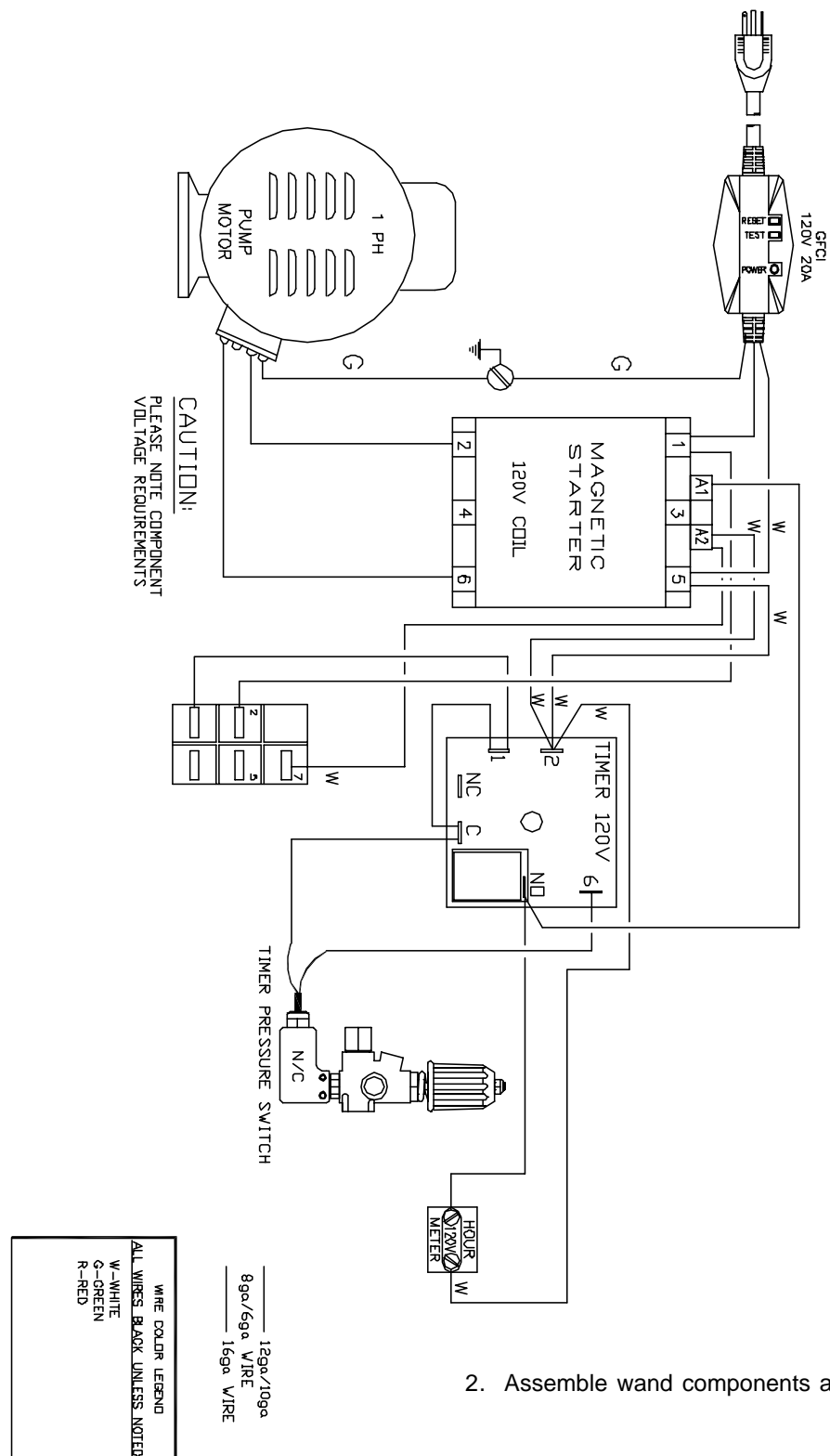
NOTES:
1. USE RED CONTURA M44 SWITCH WITH GREEN LAMP FOR PUMP SWITCH. PART NO. B-020241.
2. VERIFY COMPONENT VOLTAGES.



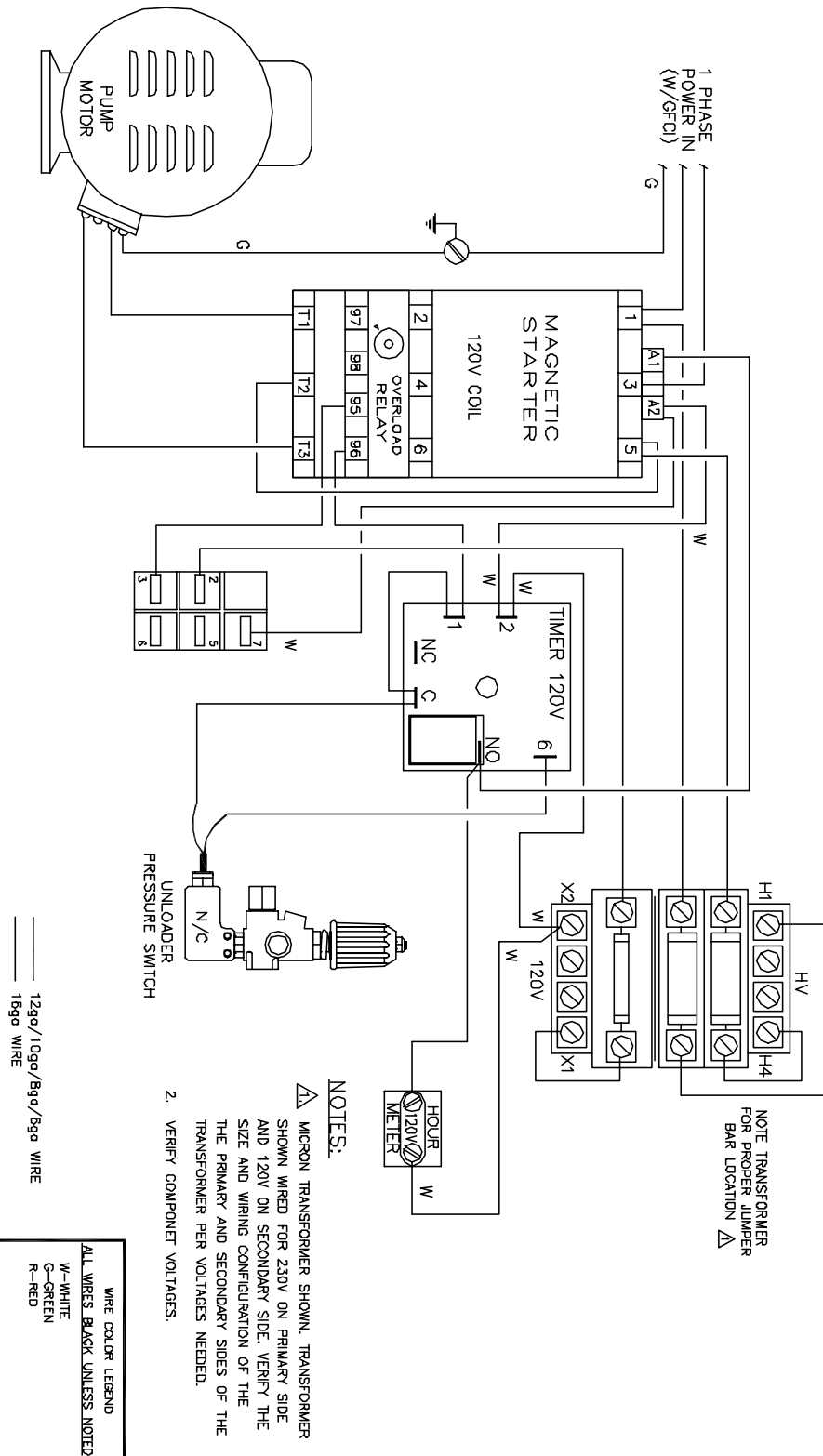
Wiring Diagram - Model 1720 w/Time Delay Shutdown



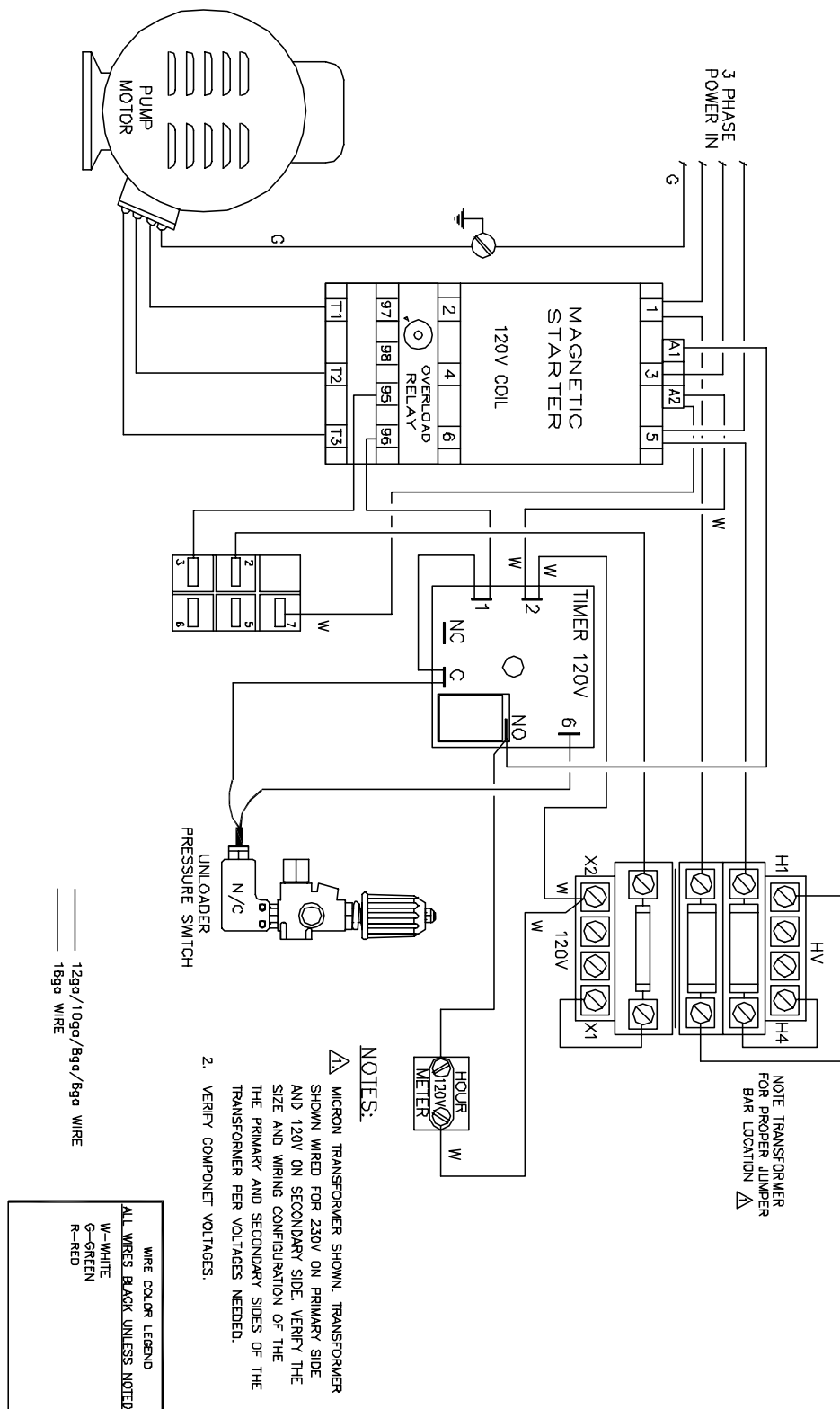
Wiring Diagram - Models 1720 and 1722 with Auto Start/Stop



2. Assemble wand components as shown in **Figure 3**.



Wiring Diagram - Models 1730, 1732, 1740, 1742, 1750, 1752, with Auto Start/Stop



Wiring Diagram - Models 1723, 1724, 1725, 1733, 1734, 1735, 1743, 1744, 1745, 1753, 1754, 1755 with Auto Start/Stop



WARRANTY

HOTSY LIMITED WARRANTY:

*Hotsy products are warranted by the Hotsy Corporation (Hotsy) to be free of defects in material and workmanship under normal use, for a period of **ONE YEAR** from the date of the original purchase. Items that fail due to normal wear such as o-rings hoses, seals, quick couplers, nozzles, gunjets, etc. or damage resulting from neglect, abuse, tampering, or modification are not covered under this warranty. Hotsy will at its option repair or replace any part covered by this warranty which is defective under normal use for one year at no charge for parts or labor. All defects must be verified by an authorized Hotsy service location. This warranty is not transferable.*

EXCEPTIONS TO THE ONE YEAR WARRANTY FOR PARTS ONLY ARE:

Hotsy Pumps: **SEVEN YEAR** Warranty (**LIFETIME** Brass Manifold Warranty- Even Against Freezing)

General Pumps: **FIVE YEAR** Warranty

Heating Coils: **FIVE YEAR** Warranty

LIMITATION OF LIABILITY:

To the extent allowable under applicable law, Hotsy liability for consequential and incidental damages is expressly disclaimed. Hotsy liability in all events is limited to, and shall not exceed, the purchase price paid for the equipment. Hotsy liability is limited to repair or replacement of defective parts only, at the option of the Hotsy Corporation.

WARRANTY DISCLAIMER:

Hotsy has made a diligent effort to illustrate and describe the product in this literature accurately; however, such illustrations and descriptions are for the sole purpose of identification, and do not express or imply a warranty that the product is merchantable or fits a particular purpose, or that the product will necessarily conform to the illustrations or descriptions.

PRODUCT SUITABILITY:

Many states and localities have codes and regulations governing sales, construction, installation, and/or use of products for certain purposes, which may vary from those in neighboring areas. While attempts to assure that its products comply with such codes, it cannot guarantee compliance and cannot be responsible for how the product is installed or used. Before purchase and use of a product, please review the product application, and national and local codes and regulations, and be sure that the product, installation, and use will comply with them.

PROMPT DISPOSITION:

Hotsy will make a good faith effort for prompt correction or other adjustments with respect to any product which proves to be defective within limited warranty. For any product believed to be defective within limited warranty, contact dealer from whom product was purchased. Dealer will give additional directions. If product was damaged in transit to you, file claim with freight carrier.

The Hotsy Corporation
www.hotsy.com
1-800-525-1976