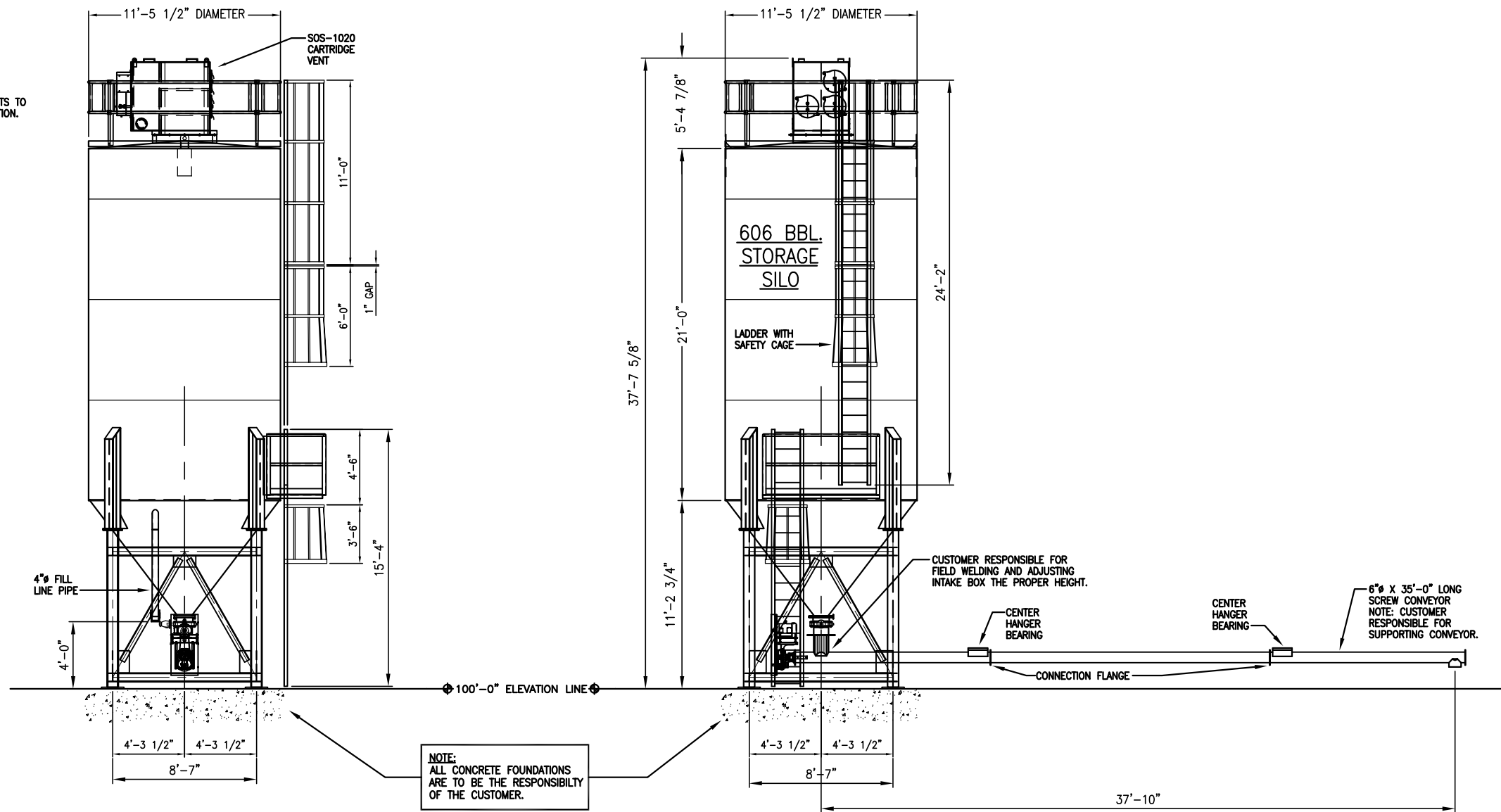
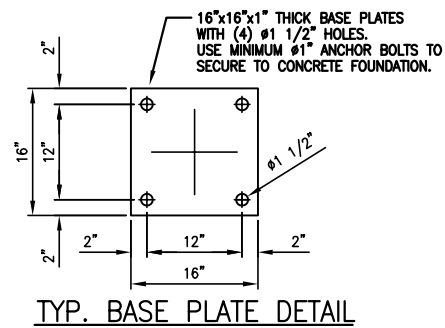
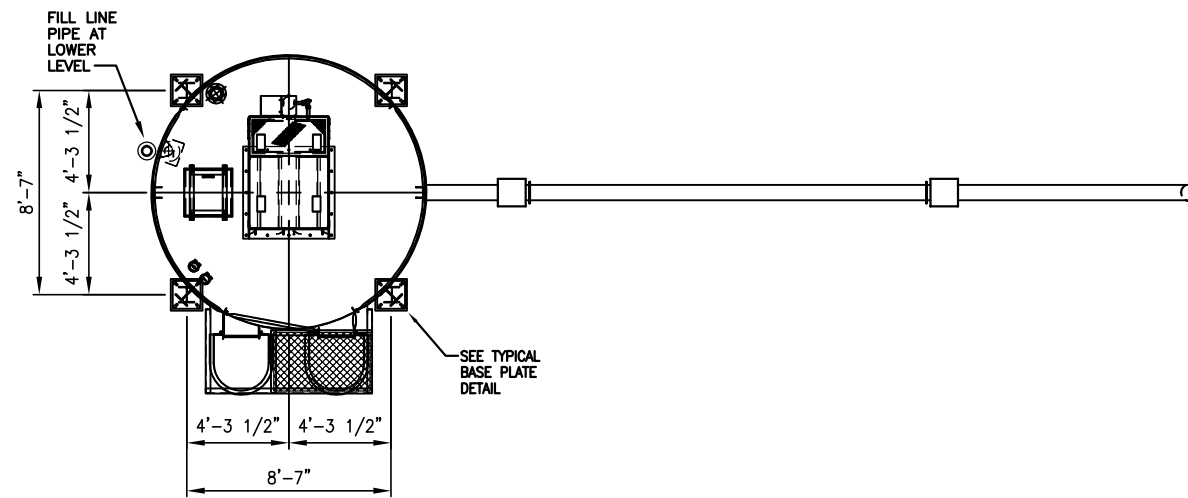


STORAGE SILO LOADS PER COLUMN						
1 KIP EQUALS 1,000 POUNDS						
DESCRIPTION OF ITEM	DEAD LOAD	LIVE LOAD	WIND LOAD	TOTAL LOAD PER COLUMN	WIND SHEAR	MAXIMUM UPLIFT EMPTY
606 BBL. STORAGE SILO	5.0 KIPS	57.0 KIPS	8.0 KIPS	70.0 KIPS	2.1 KIPS	±3.0 KIPS

GENERAL NOTES FOR EQUIPMENT MENTIONED ON THIS DRAWING

1. CONCRETE FOUNDATIONS TO BE DESIGNED FOR LOADS SHOWN ON THIS DRAWING.
2. CONCRETE FOUNDATIONS TO HAVE SUFFICIENT AREA SO AS NOT TO EXCEED THE ALLOWABLE BEARING VALUE OF THE SOIL AND MUST HAVE THE NECESSARY WEIGHT TO RESIST UPLIFT FROM WIND PRESSURE ON EQUIPMENT WHEN EMPTY.
3. WIND LOAD FIGURES BASED ON 100 M.P.H. WIND SPEED DETERMINED IN ACCORDANCE WITH THE IBC-2000 FOR EXPOSURE C.
4. SEE EQUIPMENT ELEVATIONS FOR GENERAL ARRANGEMENT LAYOUT.
5. ANCHOR BOLTS TO BE FURNISHED BY THE CUSTOMER. (PLATES CAN BE WELDED TO STEEL IN CONC.)
6. STEPHENS MFG. CO., INC. ASSUMES NO RESPONSIBILITY FOR THE FOUNDATION EXCEPT TO FURNISH DIMENSIONS OF COLUMN BASES AND ANCHOR BOLTS LAYOUT. TOPS OF ALL CONCRETE PIERS MUST BE LEVEL AND IN SAME HORIZONTAL PLANE WITH ALLOWANCE FOR FINAL GROUTING.



PLEASE READ

Please check this drawing carefully and mark appropriate box:

OK as is

OK with corrections

Another drawing required

Signature _____ Date _____

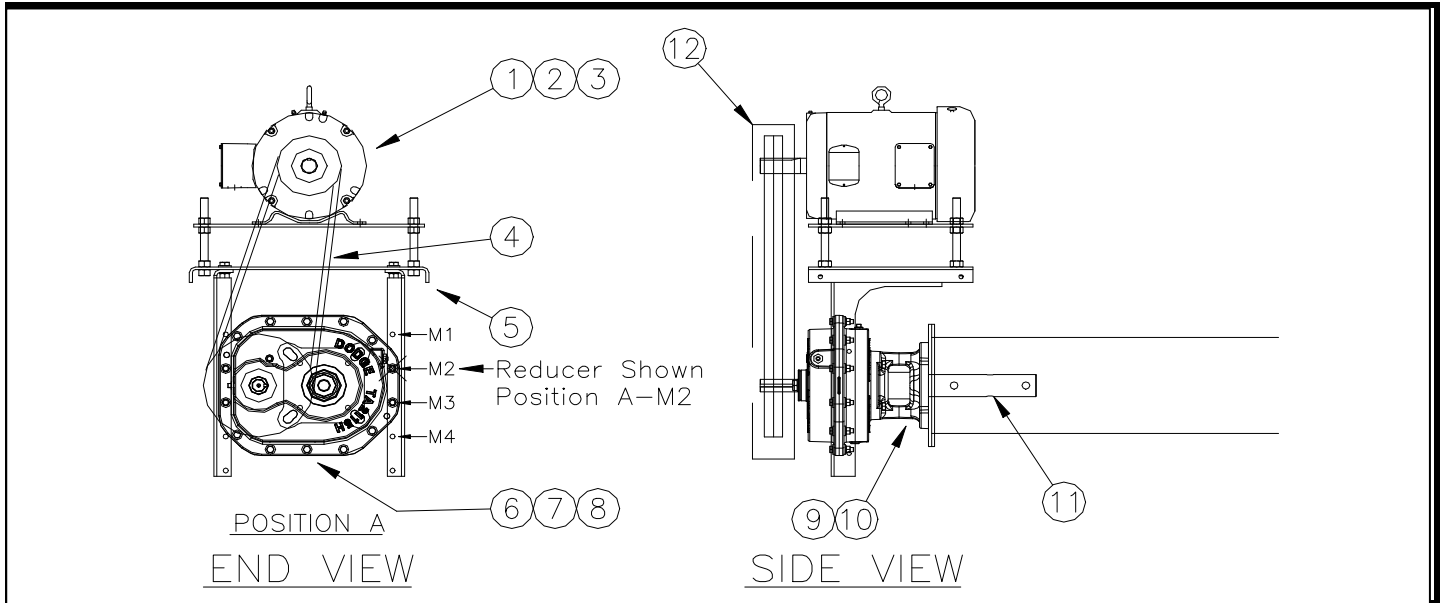
PHONE: 270-487-6774
800-626-0200

RETURN TO: Stephens Mfg.
P.O. Box 488
711 W. 4th. St.
Tompkinsville, KY 42167

FAX BACK TO: Business Fax 270-487-8368
Drafting Fax 270-487-5633

NO.	DATE	REVISION	CONFIDENTIAL DISCLOSURE	DRAWN BY:	DATE:	SCALE:	FOR:	JOB NO.	REV. NO.
2	05/07/08	CHANGED SCREW CONVEYOR FROM 35'-0" TO 40'-0"	THIS DRAWING IS THE EXCLUSIVE PROPERTY OF STEPHENS MANUFACTURING CO., INC. THE RECIPIENT ACCEPTS THAT ITS CONTENTS ARE CONFIDENTIAL AND MUST NOT BE COPIED OR SUBMITTED TO OUTSIDE PARTIES FOR USE OR EXAMINATION WITHOUT WRITTEN CONSENT.	MDH	04/09/08	NTS	PURE TECH H2O SHERIDAN, WYOMING	51029	1
1	04/14/08	CHANGED SCREW CONVEYOR FROM 15'-0" LONG TO 35'-0" LONG					TITL: 606 BBL. STORAGE SILO ELEVATIONS AND PLAN VIEW	1 OF 1	2

6" DIAMETER SCREW CONVEYOR WITH SHAFT MOUNT REDUCER



6" DIAMETER SCREW CONVEYOR WITH 7 1/2 HP. MOTOR

ID	ITEM	DESCRIPTION	Qty.	BRAND	PART NO.
1	Motor	7 1/2 HP - 213T - 1755 RPM	1	Reliance	
2	Sheave (Motor)	2/5V5.2-SDS (5.1" Pitch)	1	Dodge	455243
3	Bushing (Motor)	SDS-1 3/8	1	Dodge	120402
4	Drive Belts	5VX710 (Position B-M2 ~ 24" Centers)	2	Dodge	107178
5	Motor Mount	TA2115MM (56-256T)	1	Dodge	902090
6	Shaft Mount Reducer	TA2115H05 (5.20-1) (115S05)	1	Dodge	902004
7	Sheave (Reducer)	2/5V9.25-SK (9.15" Pitch)	1	Dodge	455253
8	Bushing (Reducer)	SK-1 1/8	1	Dodge	120423
9	Adapter & Hardware Kit	TA2115SCA	1	Dodge	902070
10	Adjustable Packing Kit	TA2115SCP	1	Dodge	902071
11	Drive Shaft	TA2115SCS x 2	1	Dodge	902073
12	Drive Belt Guard	TA2115BG	1	Dodge	902096
13					
14					
15					
16					
17					
18					
19					
20					

NOTES & REVISIONS

Red Items: To be verified by Parts Department

CONVEYOR INFORMATION	
SHAFT RPM	188
CONVEYOR TPH	
SHEAVE RATIO	1.79
DRIVE BELT HP	22.9 > 9.8