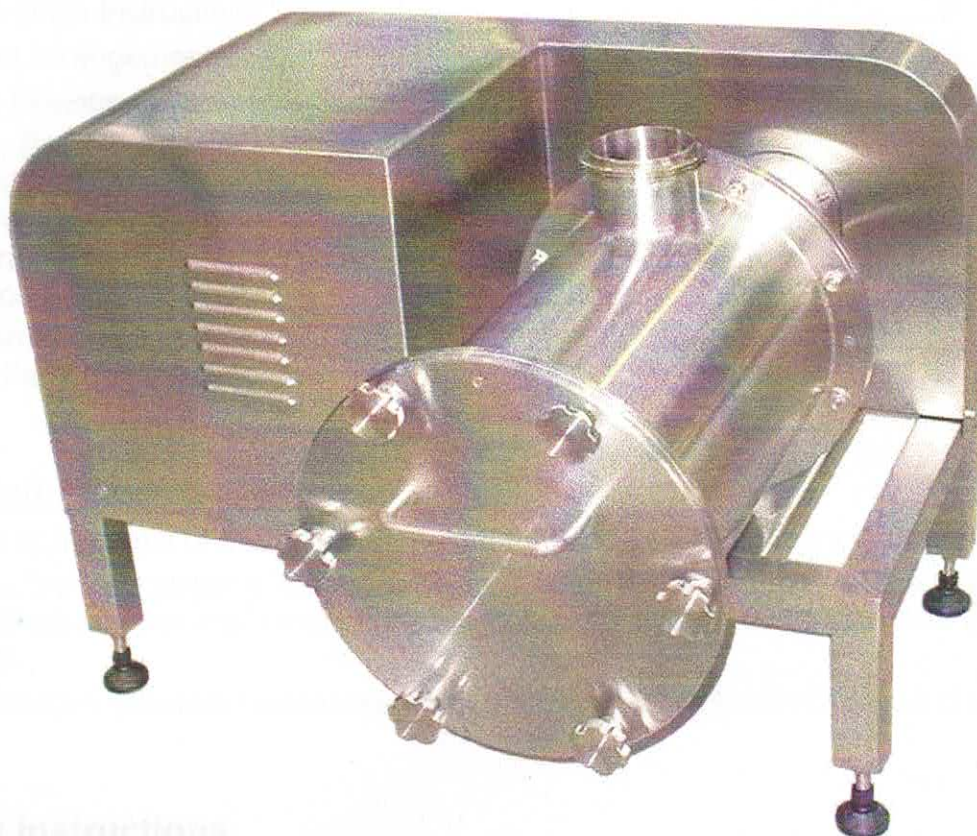


## Casein Mincer



**This manual must be read before operating the casein mincer**

### **COPYRIGHT**

This manual and its contents remain the property of Engineering Services Northland 1988 Ltd and may not be copied or distributed to a third party without the written consent of Engineering services Northland 1988 Ltd.

1	Contents.....	2
2	Installation Instructions .....	2
3	Safety Instructions.....	2
4	Maintenance Instructions.....	2
5	General Arrangement.....	3
	5.1 Motor Mounting Brackets & Stand.....	4
	5.2 Motor, Belts, & Pulleys.....	5
	5.3 Main Body.....	6
	5.4 Main Body Continued.....	7
	5.5 Bearing Housing.....	8
	5.6 Orifice Plates.....	9
6	Recommended Spare Parts.....	10
7	Spare Parts Fax Back.....	11

## **2 Installation Instructions**

1. The feet at the base of the machine must firmly and securely mount the casein mill.
2. A 400V<sub>ac</sub> 3-phase power supply is to be connected to the terminals of the motor via a gland. When all electrical connections are complete and tested all electrical covers must be replaced.
3. Motor Rotation should be clockwise when viewing the output shaft, or belt drive end.

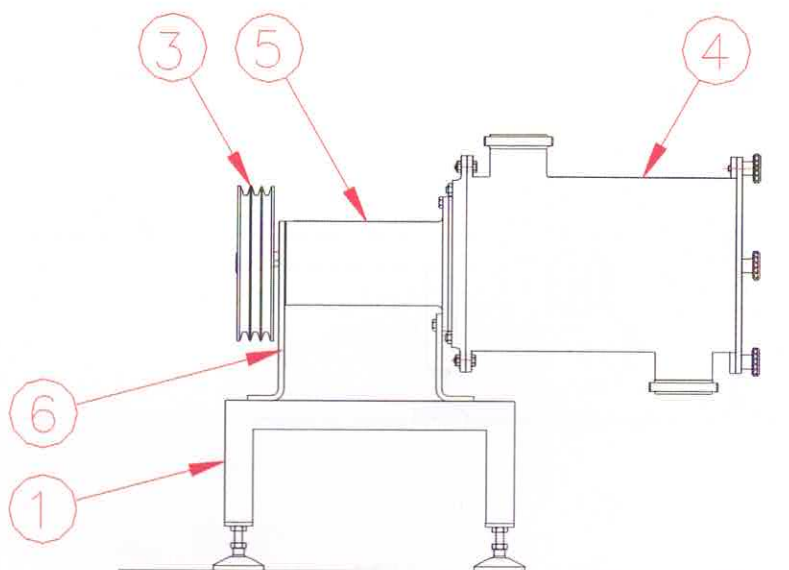
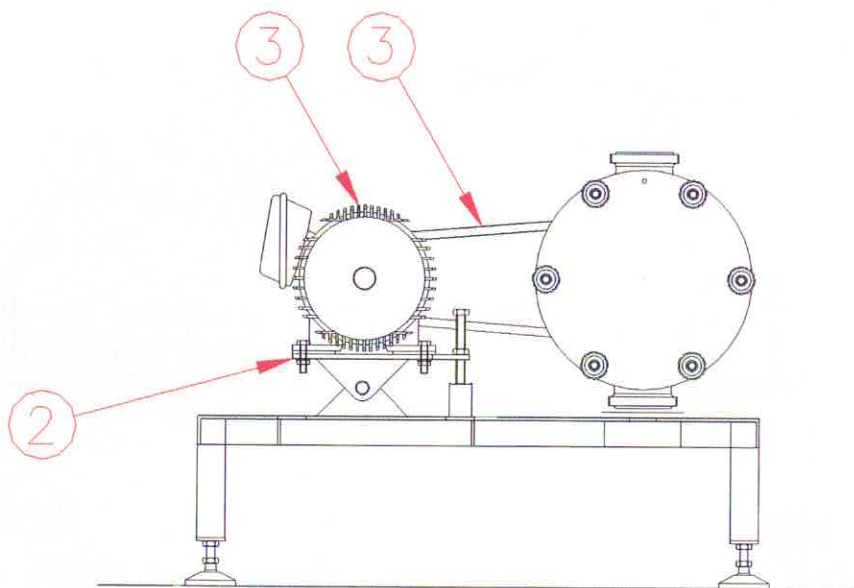
## **3 Safety Instructions**

1. **IMPORTANT** While the electrical covers are removed there must be no hosing or wet cleaning in the area.
2. **NEVER** remove the front door of the mincer when the motor control switch is in the 'on' position or while the main drive shaft is turning.
3. **NEVER** operate the mincer with the belt and motor guards removed.
4. This mincer may be operated with the orifice plates removed.

## **4 Maintenance Instructions**

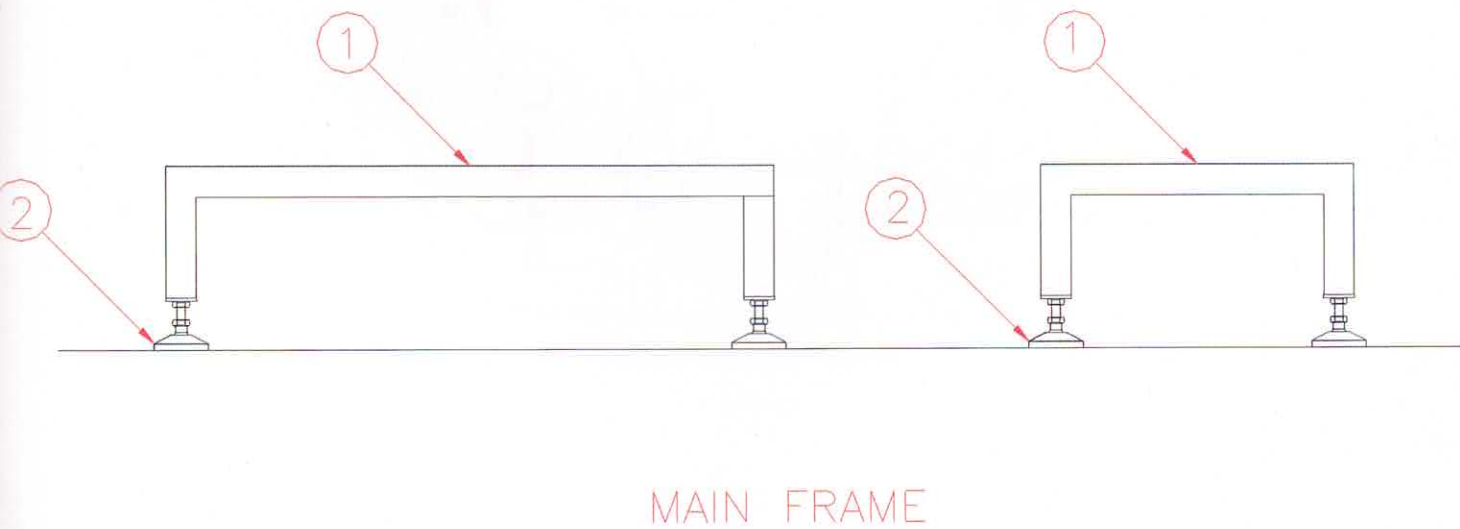
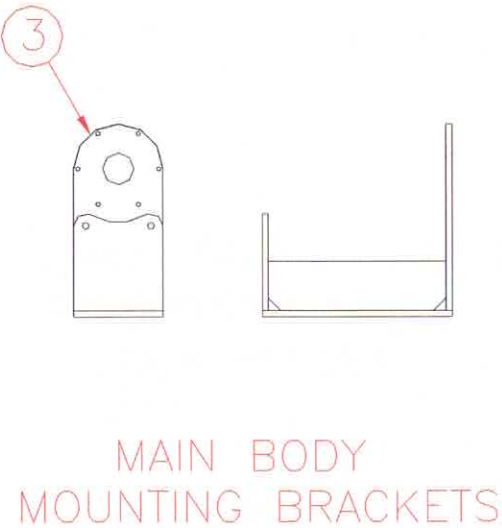
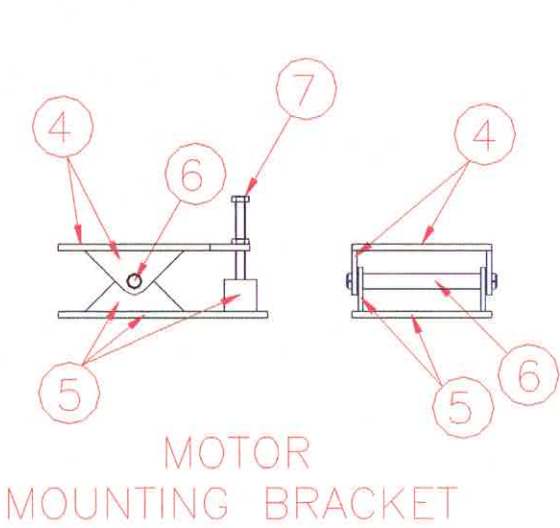
1. Apply 30g of lithium based grease to the grease nipples on the bearing housing every 1500hrs of service

## 5 General Arrangement



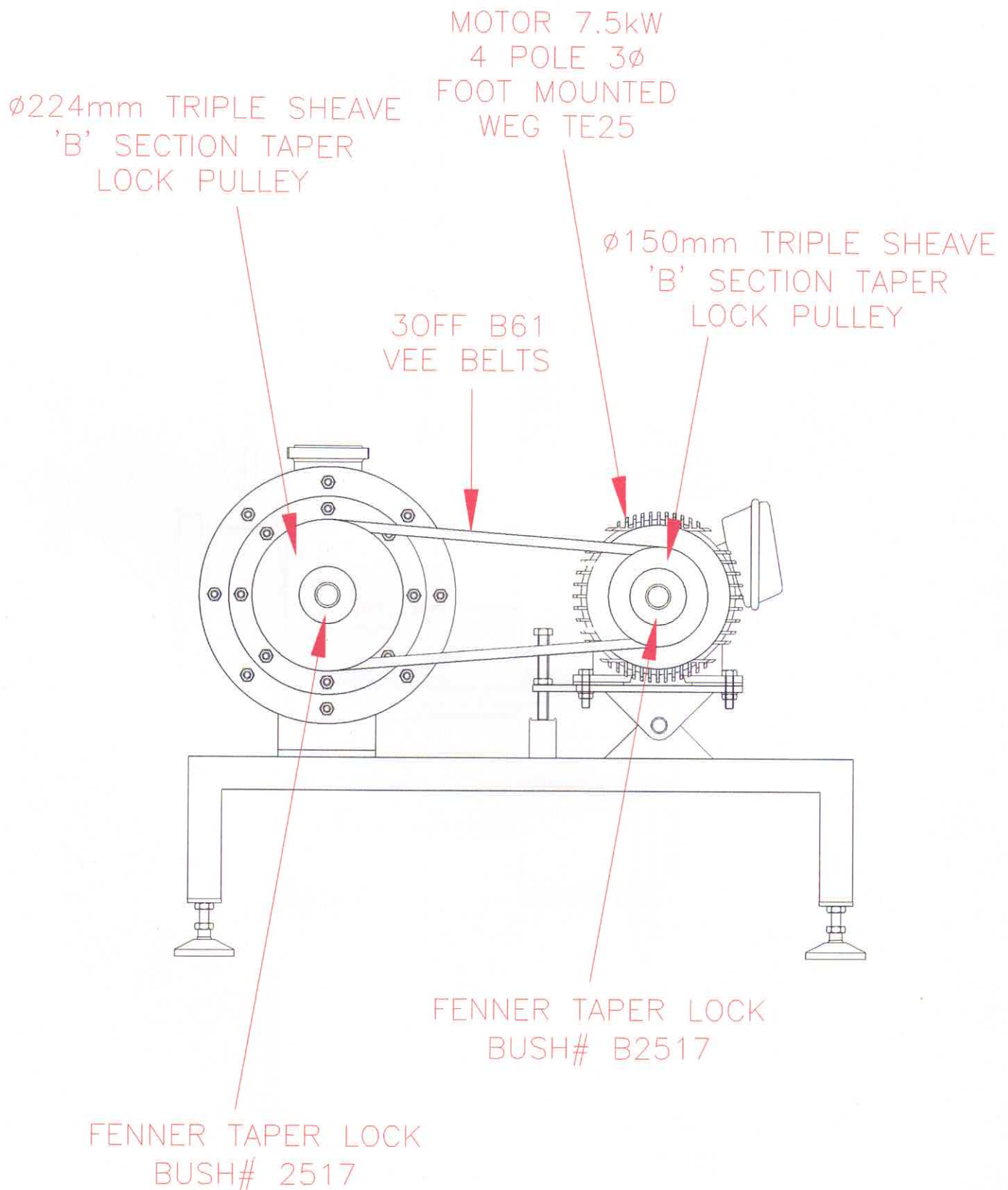
ITEM	DESCRIPTION	PAGE
1	BASE FRAME	4
2	MOTOR MOUNTING BRACKET	4
3	MOTOR, BELTS, & PULLEYS	5
4	MAIN BODY	6
5	BEARING HOUSING	7
6	BODY SUPPORT BRACKET	4

5.1 Motor Mounting Brackets & Stand

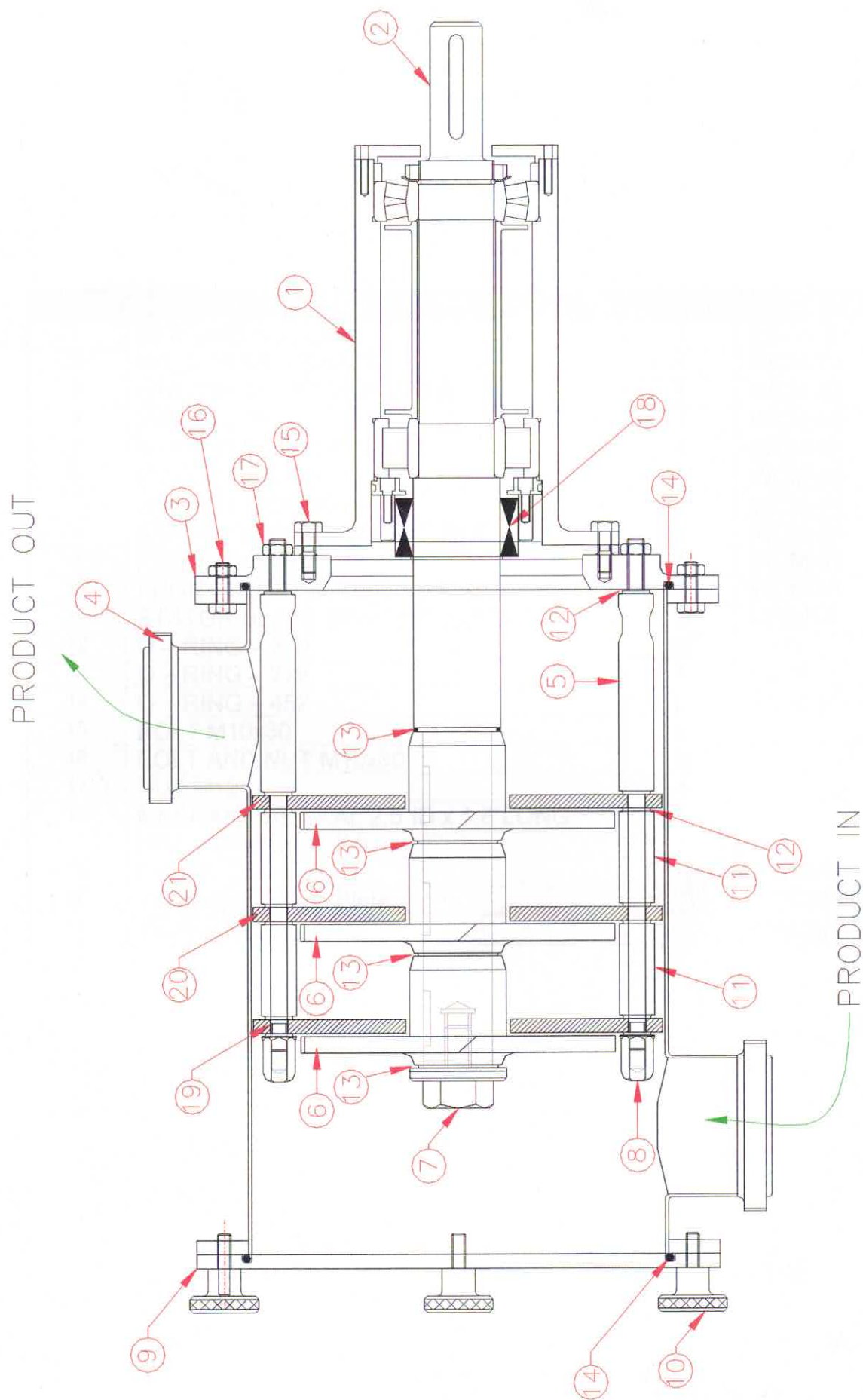


ITEM	DESCRIPTION	QNTY	PART #
1	BASE FRAME (Modified)	1	WCM-61
2	MOUNTING FEET	4	LIB-08-01-05
3	MINCER BODY MOUNT	1	WCM-62
4	MOTOR PLATE TOP	1	WCM-63
5	MOTOR PLATE BOTTOM	1	WCM-64
6	MOTOR MOUNT TABLE PIN	1	WCM-40
7	THREADED ADJUSTER	1	WCM-41

## 5.2 Motor Belts & Pulleys



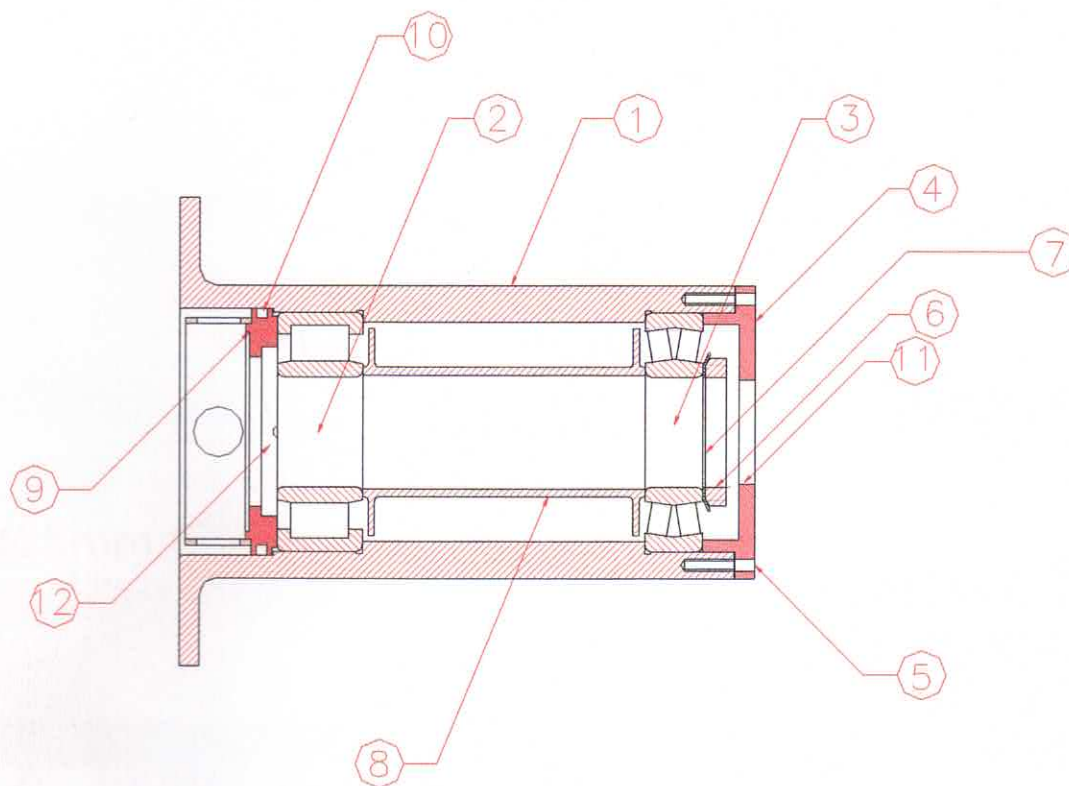
5.3 Main Body



## 5.4 Main Body Cont.

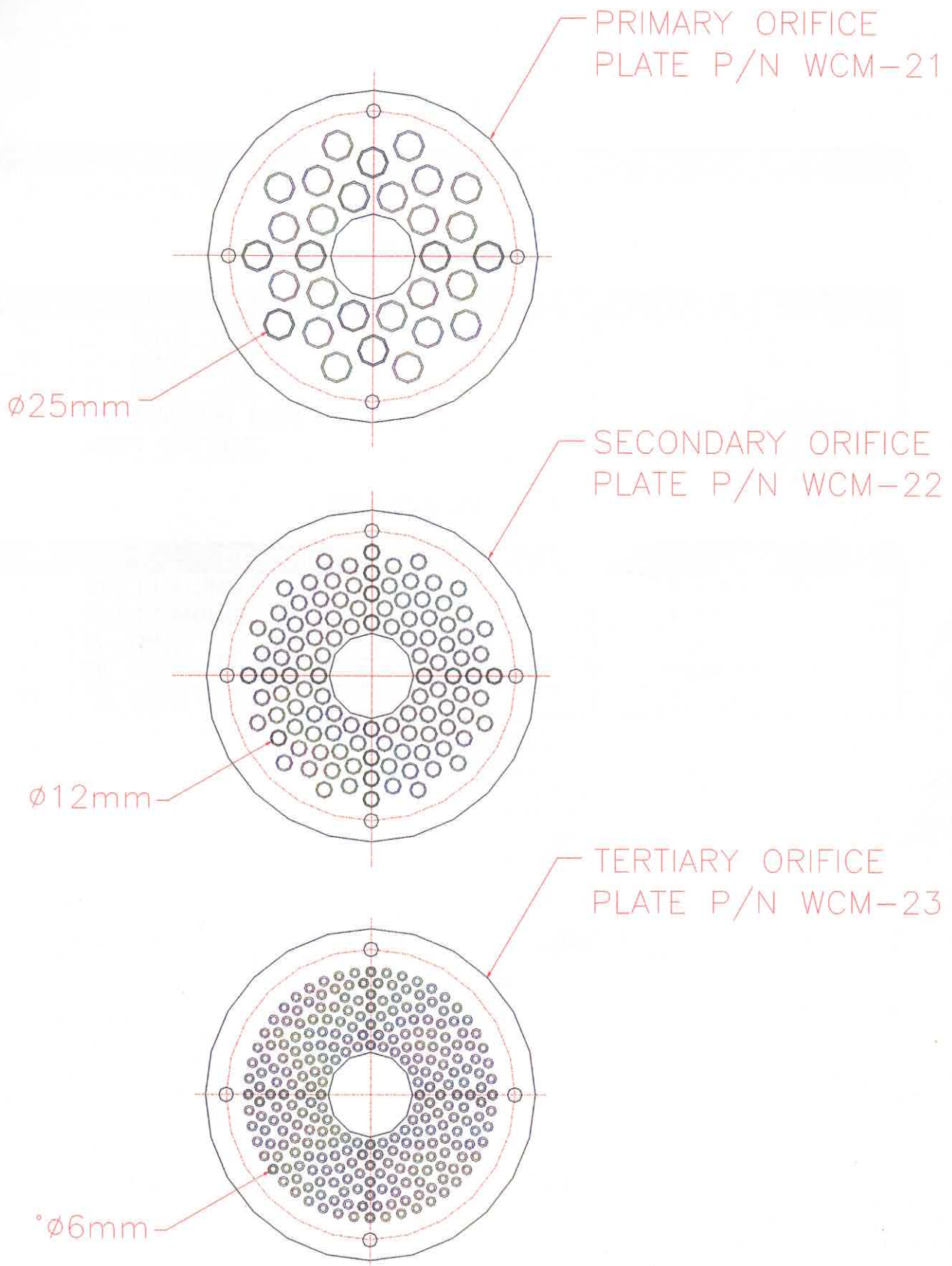
ITEM	DESCRIPTION	QNTY	PART #
1	BEARING HOUSING	1	ES-11-01
2	MAIN DRIVEN SHAFT	1	WCM-13
3	STATOR SUPPORT FLANGE	1	WCM-12
4	MAIN BODY	1	WCM-50
5	STATOR SUPPORT BARS	4	WCM-17
6	ROTOR BLADES	3	WCM-16
7	ROTOR LOCKING NUT	1	WCM-14
8	STATOR BLADE LOCKING NUT	4	WCM-19
9	FRONT DOOR	1	WCM-51
10	FRONT DOOR SECURING KNOBS	6	WCM-11
11	STATOR BLADE SPACING SLEEVES	8	WCM18
12	O – RING – 210	28	– 210
13	O – RING – 228	4	– 228
14	O – RING – 452	2	WCM-10
15	BOLT M10x30	6	
16	BOLT AND NUT M10x30	8	
17	NUT M12	4	
18	MECHANICAL SEAL 2.5"ID x 1.8"LONG HS7 – C4588C3F-X40	1	
19	Primary Orifice Plate		WCM-21
20	Secondary Orifice Plate		WCM-22
21	Tertiary Orifice Plate		WCM-23

## 5.5 Bearing Housing



ITEM	DESCRIPTION	QNTY	PART #
1	BEARING HOUSING E.S.	1	ES-11-01
2	BEARING SKF NU2311 EC	1	
3	BEARING SKF 21311 E	1	
4	END CAP	1	ES-11-02
5	CAP SCREW M6	6	
6	SKF LOCK NUT M55x2 KM11	1	
7	SKF TAB WASHER MB11	1	
8	BEARING SPACING TUBE	1	ES-11-06
9	SEAL PLATE	1	WCM-57
10	O - RING - 349	1	WCM-26
11	OIL SEAL	1	38x52x8
12	OIL SEAL HMS4	1	68x90x10

## 5.6 Orifice Plates



## **7 Recommended Spare Parts**

### **DRIVE**

ITEM	DESCRIPTION	QNTY	PART #
3	VEE BELTS	3	B61

### **MAIN BODY**

ITEM	DESCRIPTION	QNTY	PART #
12	O – RING – 210	28	– 210
13	O – RING – 228	5	– 228
14	O – RING – 452	2	– 452
21	MECHANICAL SEAL – ASMUSS 2.5” EASY SET SEAL	1	HS7 – C4588C3F – X40

### **BEARING HOUSING**

ITEM	DESCRIPTION	QNTY	PART #
2	SKF BEARING	1	NU2311 ELP
3	SKF BEARING	1	21311 E
11	O – RING	1	– 349
12	OIL SEAL	1	38x52x7
13	OIL SEAL HMS4	1	85x70x8

## **6 Spare Parts Fax Back**

Please photocopy and this form, fill in details and fax to Engineering Services when spare parts are required.

## Casein Mincer

File # **2561B**

Engineering Services Fax # 64 9 430 3668

Your Name: \_\_\_\_\_

Your Company: \_\_\_\_\_

Your Phone #: \_\_\_\_\_ Your Fax # \_\_\_\_\_

Your Fax # \_\_\_\_\_

Date: \_\_\_\_\_

[illegible]