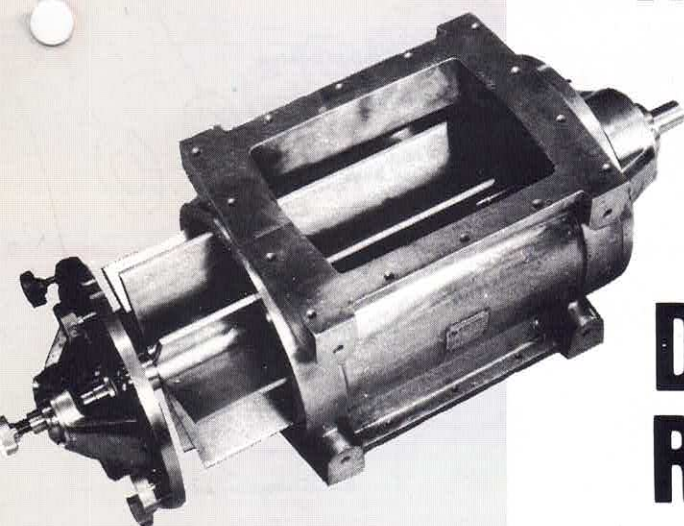


NU-CON

Rotary Valves & Airlocks



**SANITARY
De-mountable
Rotary Valves**

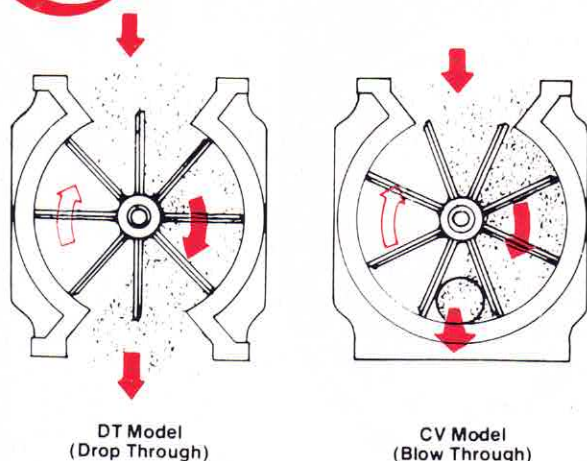


NU-CON LTD



NU-CON

Rotary Valves & Airlocks



PRINCIPLE OF OPERATION

A rotary valve or air lock is used to feed solids between areas of differing pressure while still maintaining the pressure differential.

Nu-Con valves as standard, have eight bladed cylindrical rotors and accurately gauged clearances are maintained between the rotor tips and ends within the valve bore. These clearances are vital to the performance of the valve.

VALVE CONFIGURATION

Nu-Con rotary valves are available in two basic configurations:

- Blow through (CV) with product entering at the top and discharging horizontally at 90° to inlet via a pneumatic conveying line, either vacuum or pressure.
- Drop through (DT) with product entering at the top and discharging vertically from the bottom outlet.

Both CV and DT are available in quick demountable sanitary design (USDA approved).

MATERIALS, FEATURES AND DESIGNS:

Nu-Con rotary valves are available in a wide range of material and finishes with a variety of special options:

Housing and End Plates:

- * Stainless steel 304 or 316.
- * Cast iron.
- * Cast iron, hard chrome lining.
- * Nickel chrome moly and other alloys.
- * Aluminium.

Rotors:

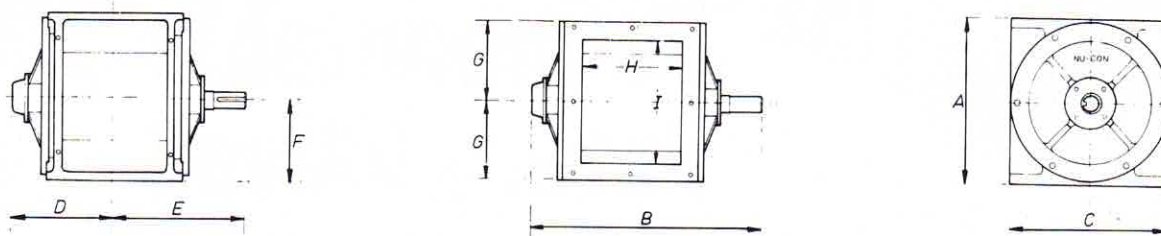
- * Available in mild steel, mild steel teflon coated, stainless steel 304 or 316.
- * Demountable rotor available without disturbing seals or bearings.
- * Adjustable rotor tips.
- * Specially hardened and profiled tips.
- * Special scalloped rotor with disc ends for high fat or sticky materials.

Nu-Con rotary valves and airlocks are designed to meet the requirements of all types of pneumatic handling. Rigid quality control and machining to tolerances to suit specific products assures highest efficiency and years of trouble free operation.

The features listed ensure that the right valve can be selected with correct features for every application and each application is considered individually to assure the optimum configuration is supplied.

Nu-Con's expertise ranges from the very abrasive heavy duty applications to the sanitary 3A approved quick demountable models and the same attention to detail and workmanship is evident throughout the range.

Nu-Con's staff have the knowledge to solve your conveying or material handling problems. Unlike most engineering companies which manufacture rotary valves, Nu-Con manufacture them for their own system and contract work as well as component supply so we fully understand the performance requirements.



NU-CON ROTARY VALVES - B SERIES

Model	Swept Vol. m ³	Rotor Dia. x Length	Drive KW HP	Shaft Dia. mm.	Dimensions - Millimetres										
					A	B	C	D	E	F	G	H	I		
375 DT	.006	203 x 190	.37 .5	24	266	355	236	150	205	133	118	146	197		
500 DT	0.13	255 x 304	.37 .5	30	321	470	305	205	265	161	152.5	229	152		
750 DT	.022	279 x 444	.75 1	35	330	645	324	285	360	165	162	330	203		
1250 DT	0.36	340 x 460	.75 1	42	410	675	455	295	380	205	227.5	350	305		
2000 DT	0.54	410 x 440	1.5 2	48	480	680	490	295	385	240	245	350	350		
3000 DT	.088	445 x 650	2.25 3	60	600	1010	580	445	565	300	290	650	470		
6000 DT	.167	650 x 580	2.25 3	70	830	995	790	421	574	415	395	584	650		

**NU-CON**

De-mountable Rotary Valve

DEMOUNTABLE ROTARY VALVE

It has become necessary in recent times to develop a rotary valve which can be dismantled in a very short time to facilitate cleaning and inspection when required. It has also been an important factor that this whole operation should be done by hand using no tools.

Following a great deal of research and development, Nu-Con can now offer a rotary valve design incorporating a number of new features.

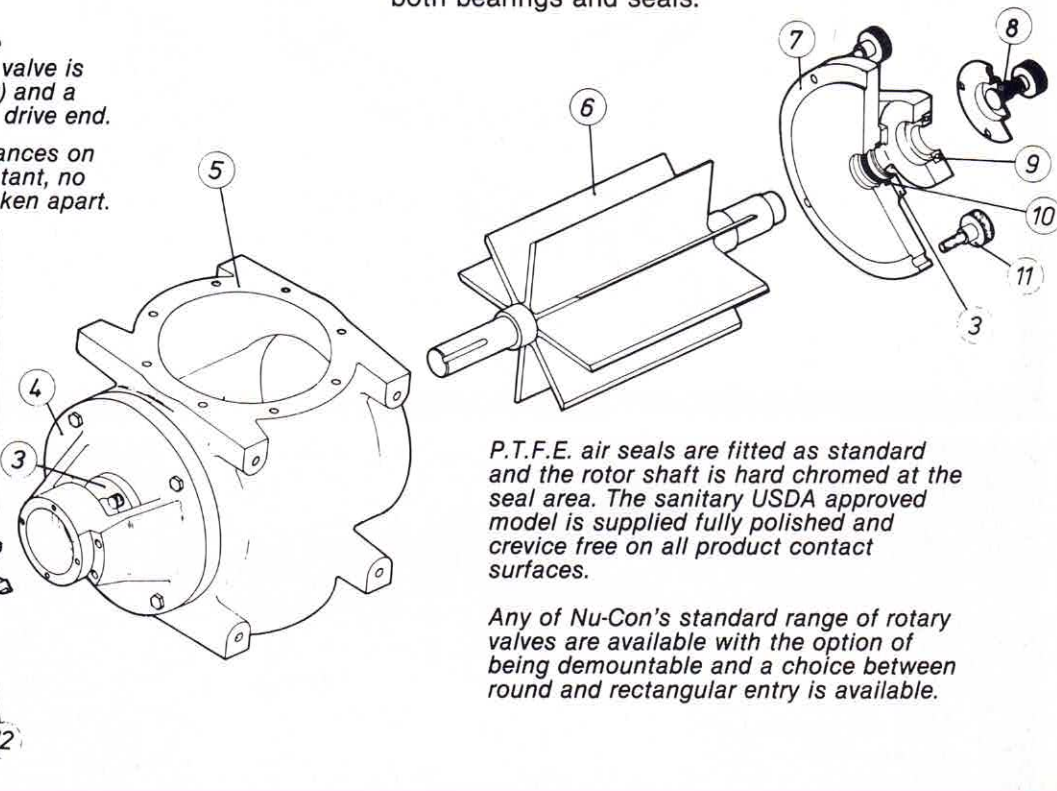
The illustration shows the valve disassembled. The shaft of the valve is split (at the drive end externally) and a location lug is machined at the drive end.

This method ensures that clearances on both tips and ends remain constant, no matter how often the valve is taken apart.

The demountable rotary valve can be made in any of the already available materials in a drop-through or convey-through configuration.

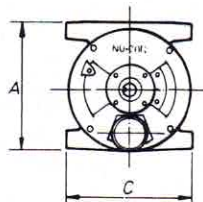
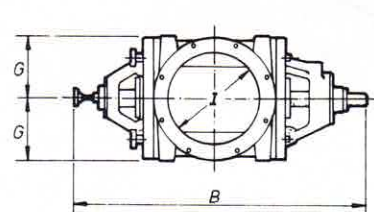
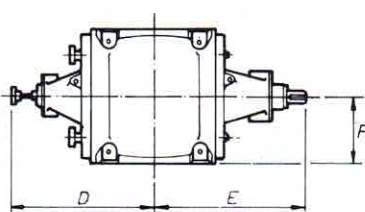
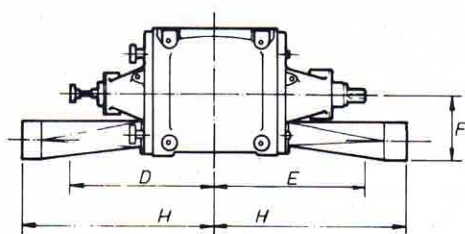
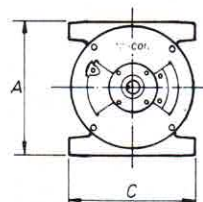
Nu-Con's design enables one end plate to be removed using hand wheels which secure the plate to the valve body, and an additional hand wheel which can be screwed by hand (against the rotor shaft) to push off the entire end plate. This method of removal eliminates the need to disturb both bearings and seals.

Nº	DESCRIPTION
1	BEARING RETAINER PLATE
2	BEARINGS
3	VARISEAL RETAINER PLATE
4	DRIVE END PLATE
5	BODY
6	SHAFT & ROTOR
7	NON-DRIVE END PLATE
8	END CAP WITH HANDWHEEL
9	BEARING
10	VARISEAL
11	QUICK RELEASE HANDWHEELS (4 OFF)
12	DRIVE SLEEVE
13	BEARING SPACERS (INNER & OUTER RACES)



P.T.F.E. air seals are fitted as standard and the rotor shaft is hard chromed at the seal area. The sanitary USDA approved model is supplied fully polished and crevice free on all product contact surfaces.

Any of Nu-Con's standard range of rotary valves are available with the option of being demountable and a choice between round and rectangular entry is available.

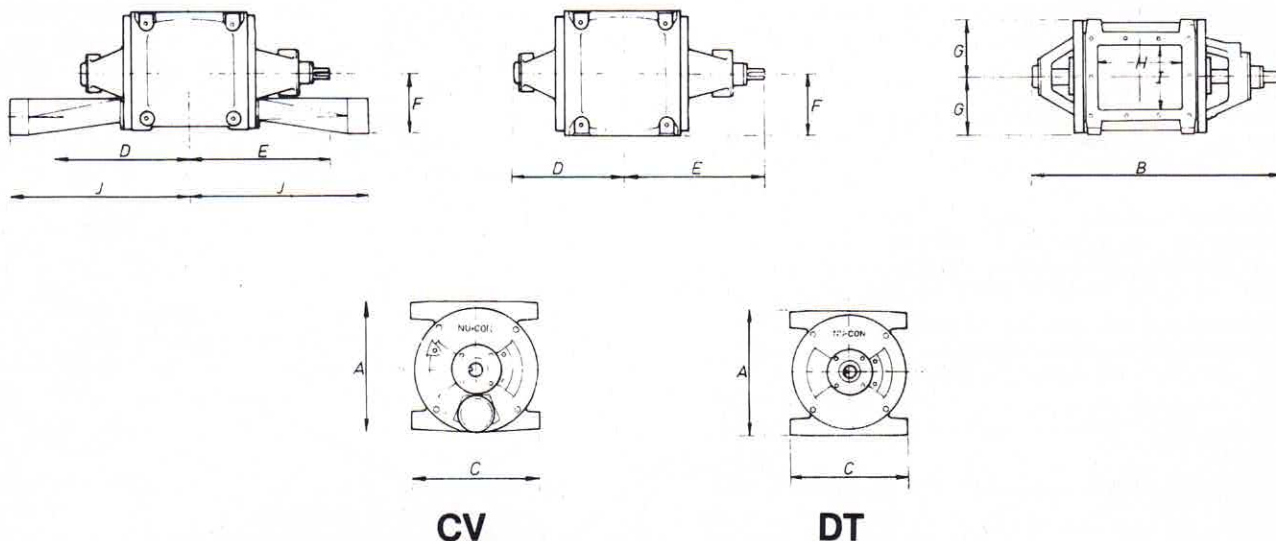
**CV****DT**

NU-CON ROTARY VALVES - DEMOUNTABLE SERIES - ROUND ENTRY

Model		Swept Vol. m ³	Rotor Dia. x Length	Drive KW HP	Shaft Dia. x Key.	A	B	C	Dimensions - Millimetres			G	H	I	Mounting J Detail
									D	E	F				
375	DT	.006	203 x 190	0.37 0.5	30 x 8	290	605	236	280	325	145	119	-	165	8 holes M10 235 PCD
500	CV	0.13	255 x 304	0.37 0.5	30 x 8	305	715	315	350	340	146	157.5	475	230	8 holes M10 286 PCD
	DT					321	715	315	350	365	161	157.5		230	
750	CV	.022	300 x 380	0.75 1	35 x 9.5	350	791	370	378	413	175	185	518	254	8 holes M10 336 PCD
	DT					350	791	370	378	413	175	185		254	
1250	CV	.036	343 x 462	0.75 1	35 x 9.5	410	885	415	428	487	205	207.5	560	328	8 holes M10 375 PCD
	DT					410	885	415	428	487	205	207.5		328	



NU-CON LTD



NU-CON ROTARY VALVES - C & CM SERIES

Model		Swept Vol. m ³	Rotor Dia. x Length	Drive KW HP	Shaft Dia. mm.	A	B	Dimensions C	Dimensions D	Dimensions E	F	G	H	I	J
375	CV	.006	203 x 190	.37 .5	24	254	470	236	205	265	121	118	146	197	343
	DT					266	470	236	205	265	133	118	146	197	-
500	CV	.013	255 x 304	.37 .5	30	305	617	305	275	342	146	152.5	229	152	425
	DT					321	617	305	275	342	161	152.5	229	152	-
750	CV	.022	219 x 444	.75 1	35	317	742	324	330	412	152	162	330	203	508
	DT					330	742	324	330	412	165	162	330	203	-
1250	CV	.036	340 x 460	.75 1	42	410	855	455	385	470	205	227.5	350	305	580
	DT					410	855	455	385	470	205	227.5	350	305	-
2000	CV	.054	410 x 440	1.5 2	48	480	910	490	403	507	240	245	350	350	620
	DT					480	910	490	403	507	240	245	350	350	-
3000	CV	.088	445 x 650	2.25 3	60	600	1247	580	572	675	300	290	650	470	650
	DT					600	1247	580	572	675	300	290	650	470	-
6000	CV	.167	650 x 580	2.25 3	70	830	1390	790	620	770	415	395	584	650	700
	DT					830	1390	790	620	770	415	395	584	650	-

Special Nu-Con Features:

- * USDA 3A full specification fully ground and polished internal and external model available in demountable configuration.
- * Specially hardened externally adjusted and removed knife blades available on drop through model.
- * Standard design air vents available for fitting to housing of all valves in range.
- * Rotary valves available with imperial or metric threads.

SERVICE

Nu-Con Systems operates its own wholly owned foundry and Machine Shop and are able to offer a comprehensive fast reconditioning service for the complete range of valves available.

Full spares inventories are kept.

Illustrations and descriptions are not binding. Due to continuing development, the manufacturer reserves the right to alter designs and specifications without prior notice.



NU-CON LIMITED

20 Fairfax Avenue, Penrose, Auckland, New Zealand.
P.O. Box 12-264, Penrose.
Ph: 64-9-579 2044 Fax: 64-9-579 1121

Designed and printed in New Zealand
© 1985 NU-CON Limited
Publication No 104

Distributed by: