

# Urschel® Model CD-A

## Uniformly Dices or Strip Cuts



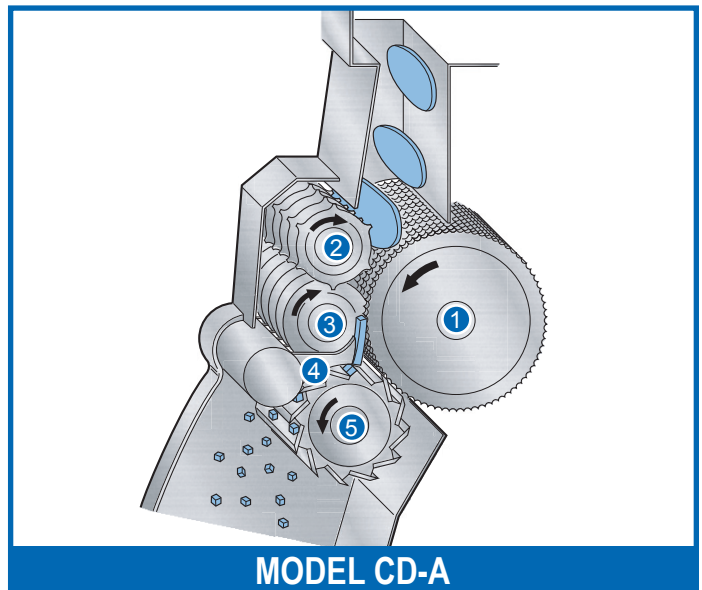
### SPECIFICATIONS

Length: ..... 41.37" (1051 mm)  
Width: ..... 38.60" (981 mm)  
Height: ..... 49.21" (1250 mm)  
Net Weight: ..... 556 lb (252 kg)  
Motor: ..... 2 HP (1.5 kW)

### APPLICATIONS

The Urschel two-dimensional Model CD-A uniformly dices and strip cuts in the small to intermediate size range. The Model CD-A cuts a multitude of products including: raw or brined citrus peel, nuts, dried prunes, and raisins. The machine features continuous operation for uninterrupted production and is designed for easy cleanup and maintenance.

Maximum input product thickness is 3/8" (9.5 mm).



MODEL CD-A

### OPERATING PRINCIPLE

Product delivered to an opening in the feed pan falls onto a revolving corrugated feed drum [ 1 ]. The drum and opposing feed spindle [ 2 ] transfer product to the circular knives [ 3 ] where it is cut into strips. The individual strips are removed from the circular knives by the stripping action of the shear plate [ 4 ], which also acts as a shear edge for the crosscut knives. The strips of product move directly into the rotating crosscut knives [ 5 ]. This second and final cut produces cubes or rectangular pieces and discharges the product from the dicer.

### TYPES OF CUTS

#### DICES/GRANULATIONS:

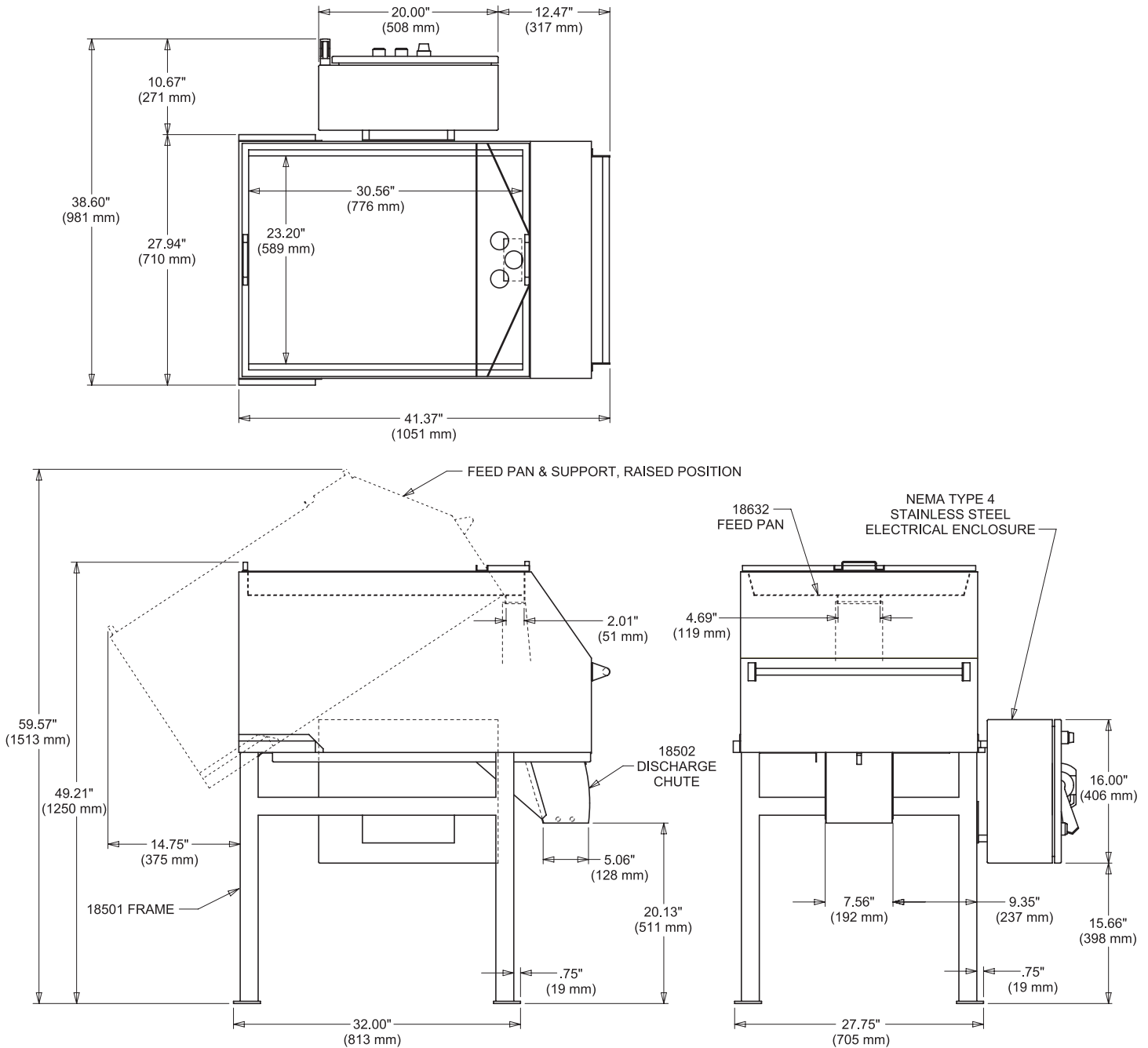
Circular Knife Cuts: 1/8 to 1" (3.2 to 25.4 mm)

Crosscut Knife Cuts: 1/16 to 3" (1.6 to 76.2 mm)

#### STRIP CUTS:

Removal of the crosscut knife spindle will produce strips of different lengths depending on input product size.

# Urschel® Model CD-A Dimensional Drawing



## You Are Invited to Test Cut Your Product

Urschel Laboratories has a complete network of test facilities and experienced service and sales representatives around the world ready to work for you on any size reduction application. Contact your local Urschel Laboratories' representative to schedule a comprehensive, no-obligation test today at [www.urschel.com](http://www.urschel.com).



**URSCHEL**  
LABORATORIES INCORPORATED  
The Global Leader in Food Cutting Technology  
[www.urschel.com](http://www.urschel.com) | [info@urschel.com](mailto:info@urschel.com)